

Gamma And
+2.15mag

Beta And
+2.05mag

M31 GLX
+3.5mag

Delta And
+3.25mag

Alpha And
+2.05mag

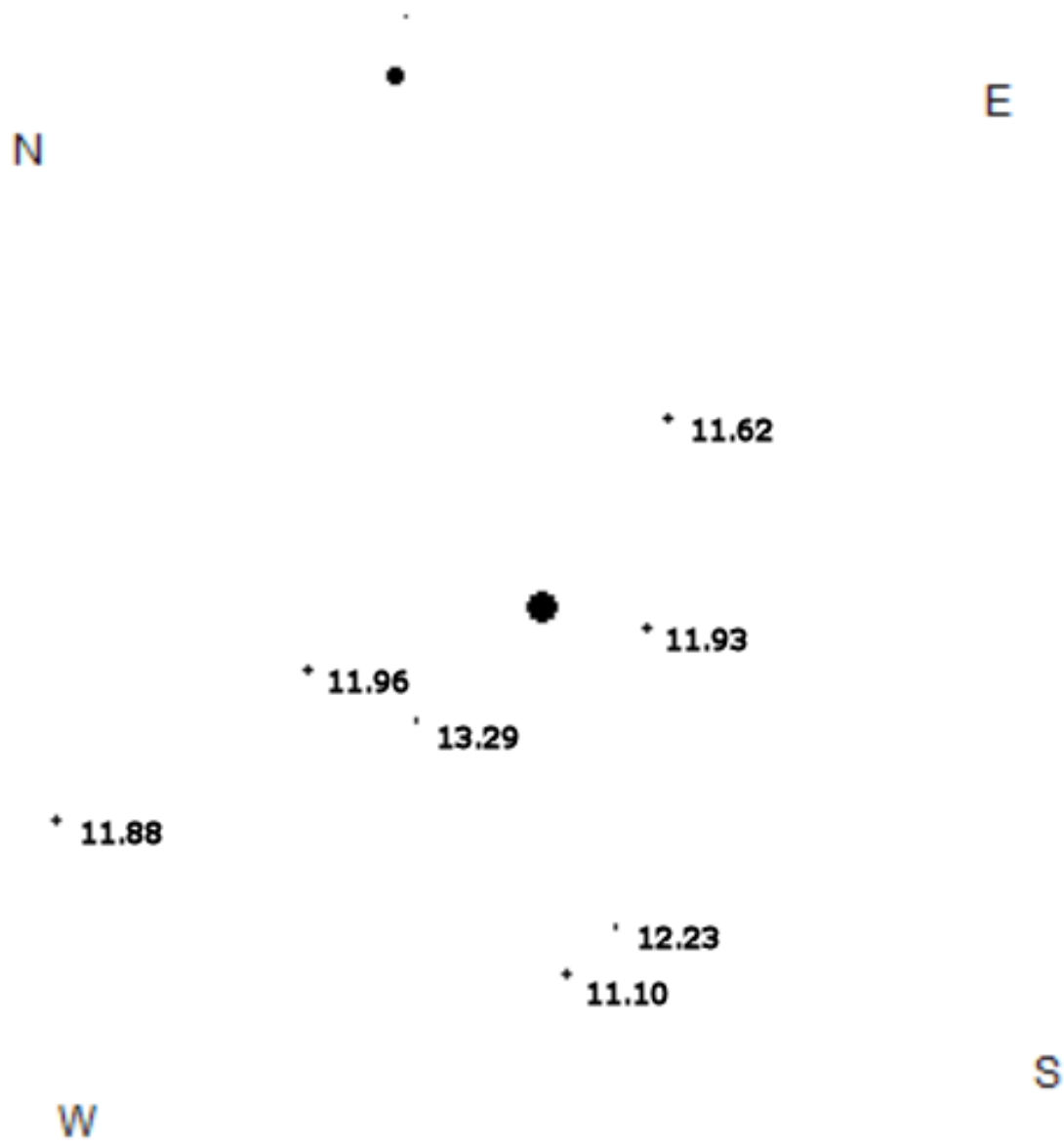
Erde, 'A1 Wien, 168m

FOV 30.1°

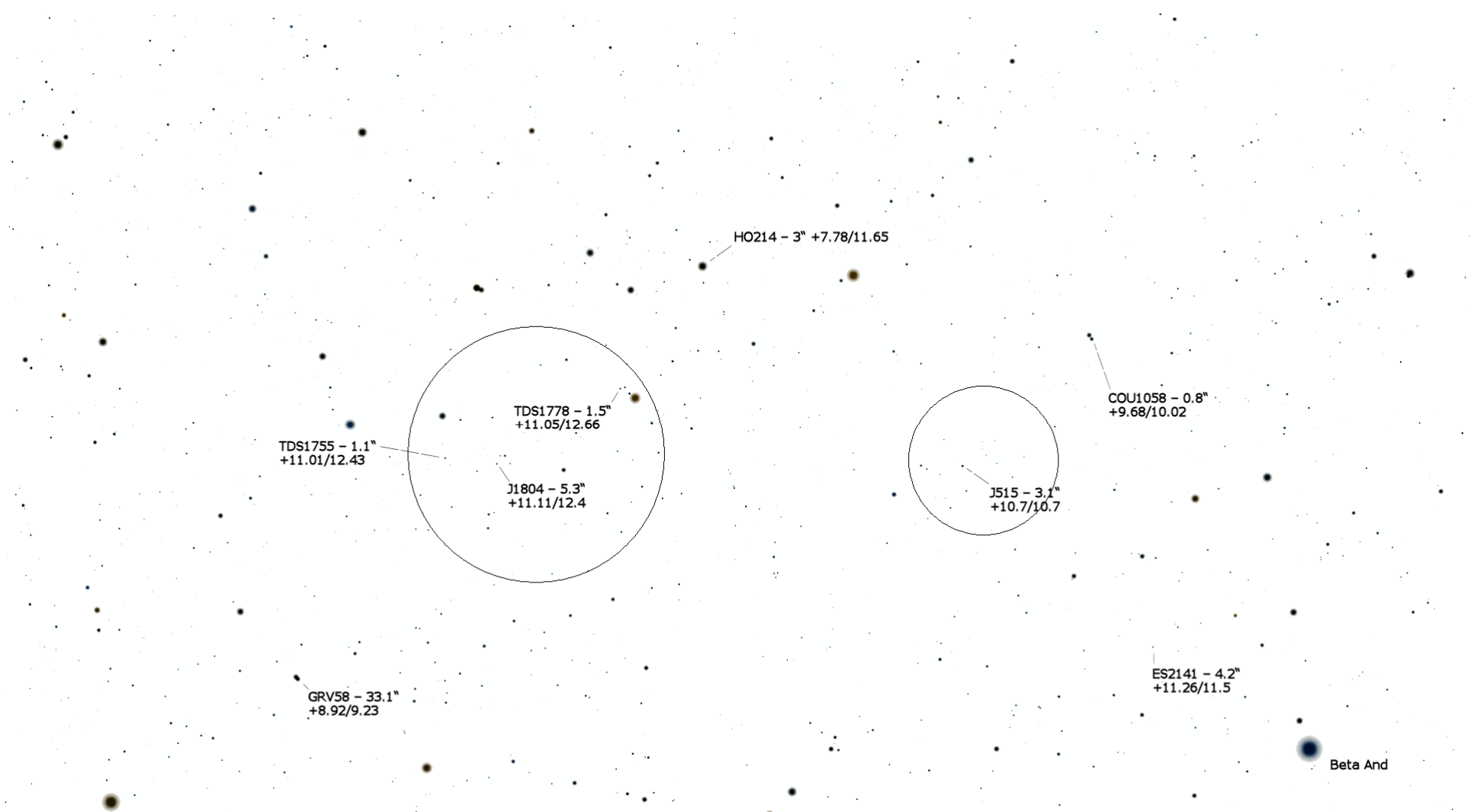
23.5 FPS

2012-11-30 21:30:18

Andromeda



TML Beta And per Ende Dezember 15' FoV



TDS1755 - 1.1"
+11.01/12.43

TDS1778 - 1.5"
+11.05/12.66

J1804 - 5.3"
+11.11/12.4

HO214 - 3" +7.78/11.65

COU1058 - 0.8"
+9.68/10.02

J515 - 3.1"
+10.7/10.7

GRV58 - 33.1"
+8.92/9.23

ES2141 - 4.2"
+11.26/11.5

Beta And

N

E

•-[03.01-2 J515

S

W





