

TML Lambda Aql per Mitte August FoV 15'

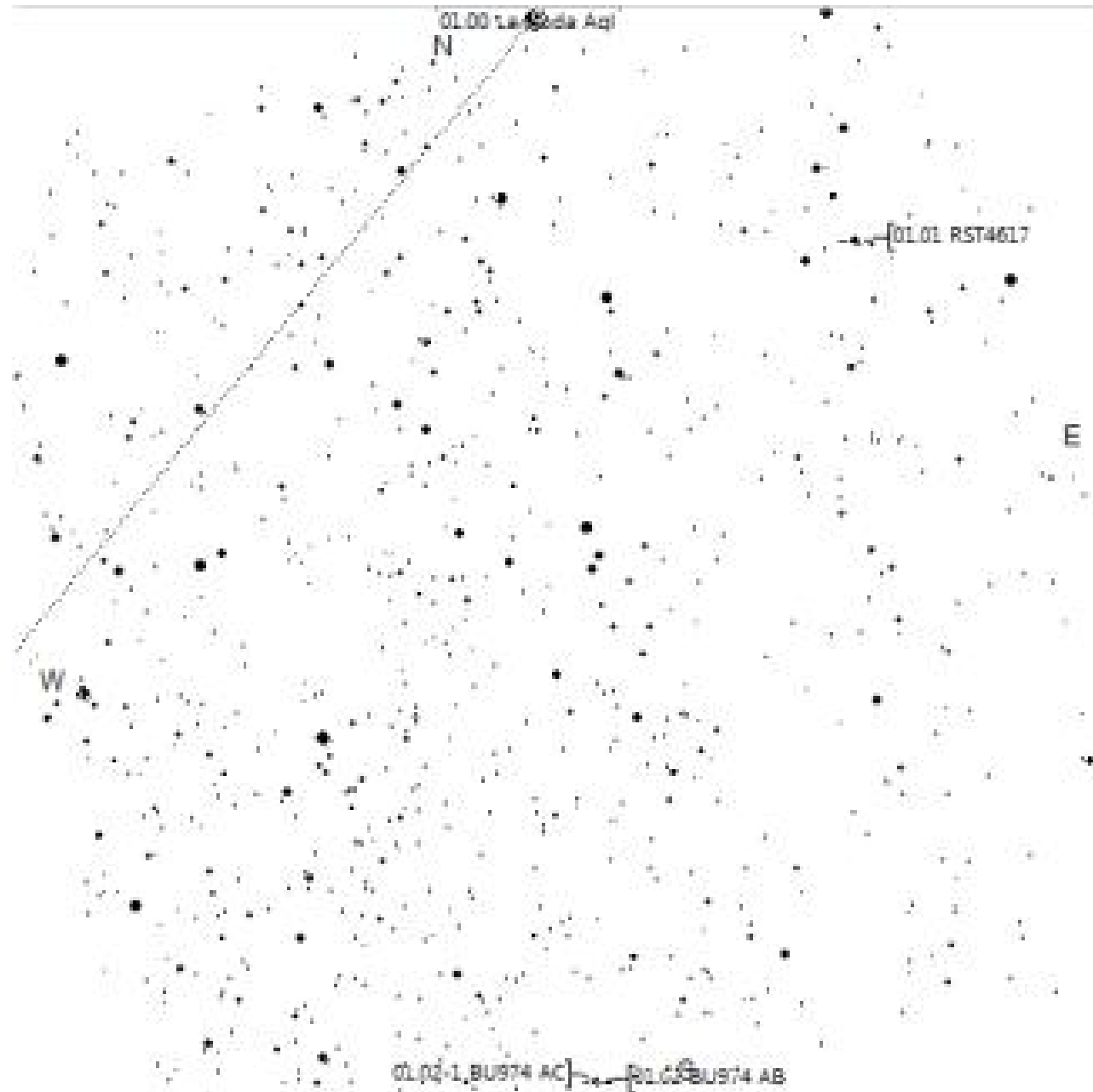
Lambda Aql
+3.4mag

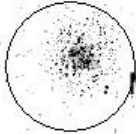
< RST4617 - 2.3"DS +8.9/10.7mag

< BU974 AB - 0.9"DS +9.96/10.6mag
AC - 20.6"DS +9.96/12.7mag

A39 - 5.5"DS +8.89/12.4mag >-

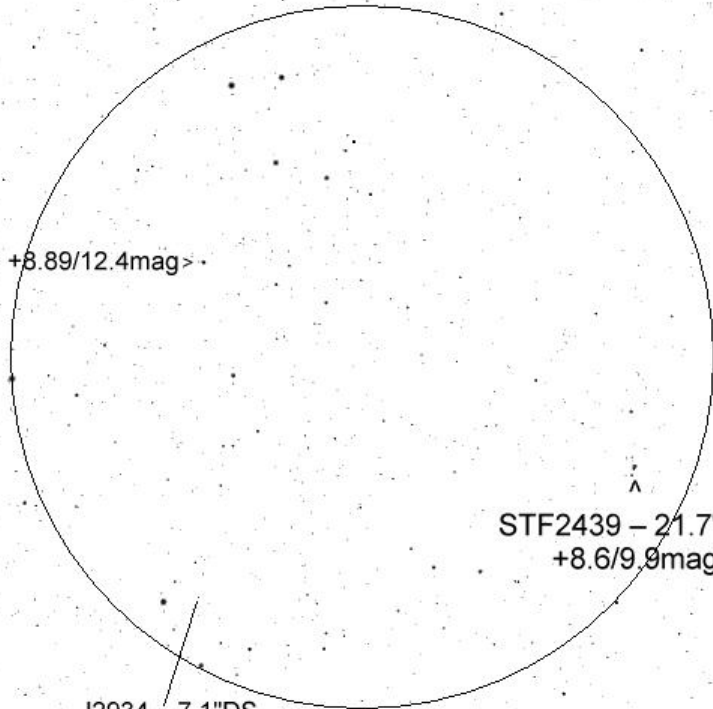
< STF2439 - 22.1"DS
+8.59/9.93mag





M11 - KSH
+7mag

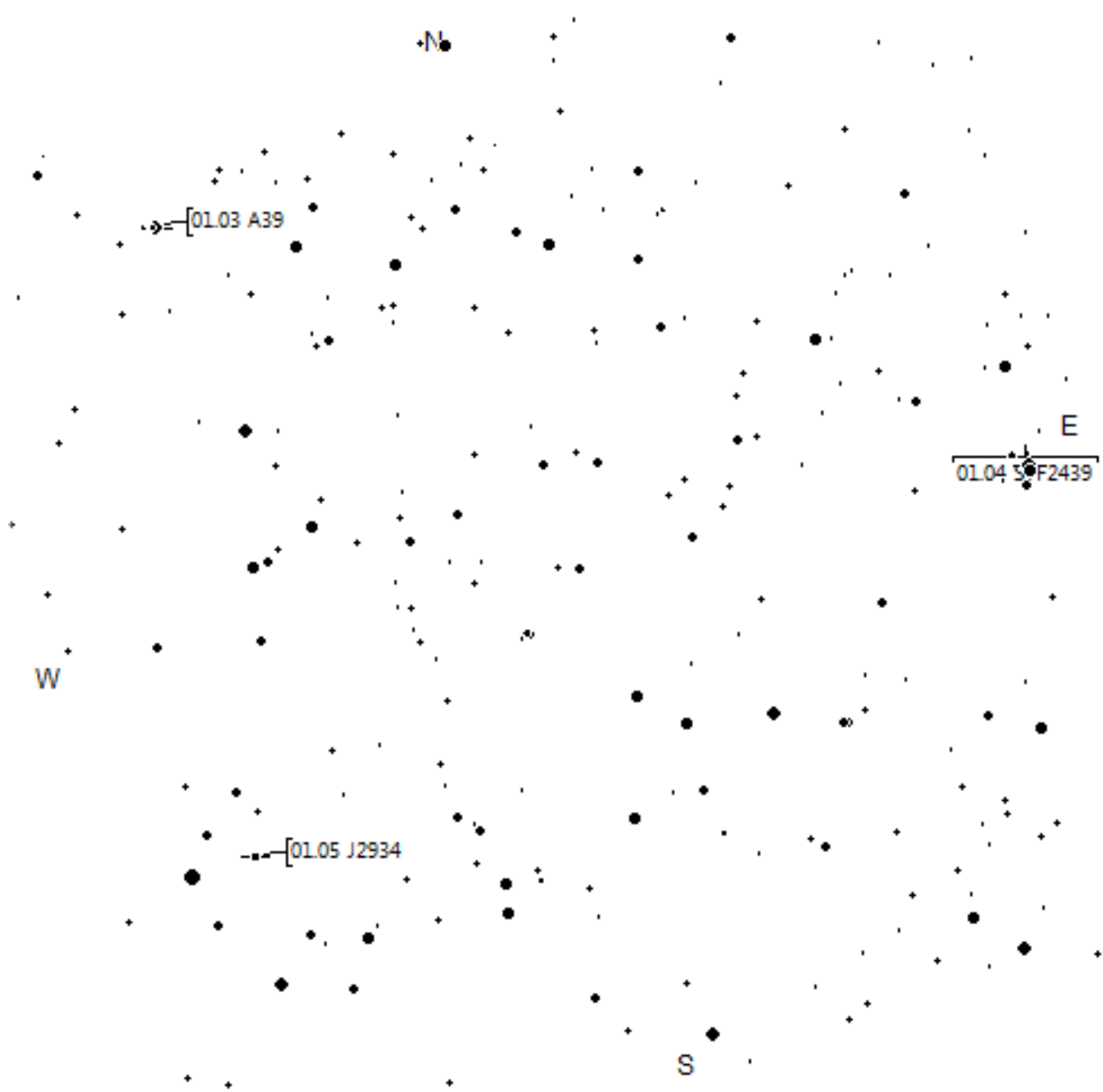
A39 - 5.5"DS +8.89/12.4mag

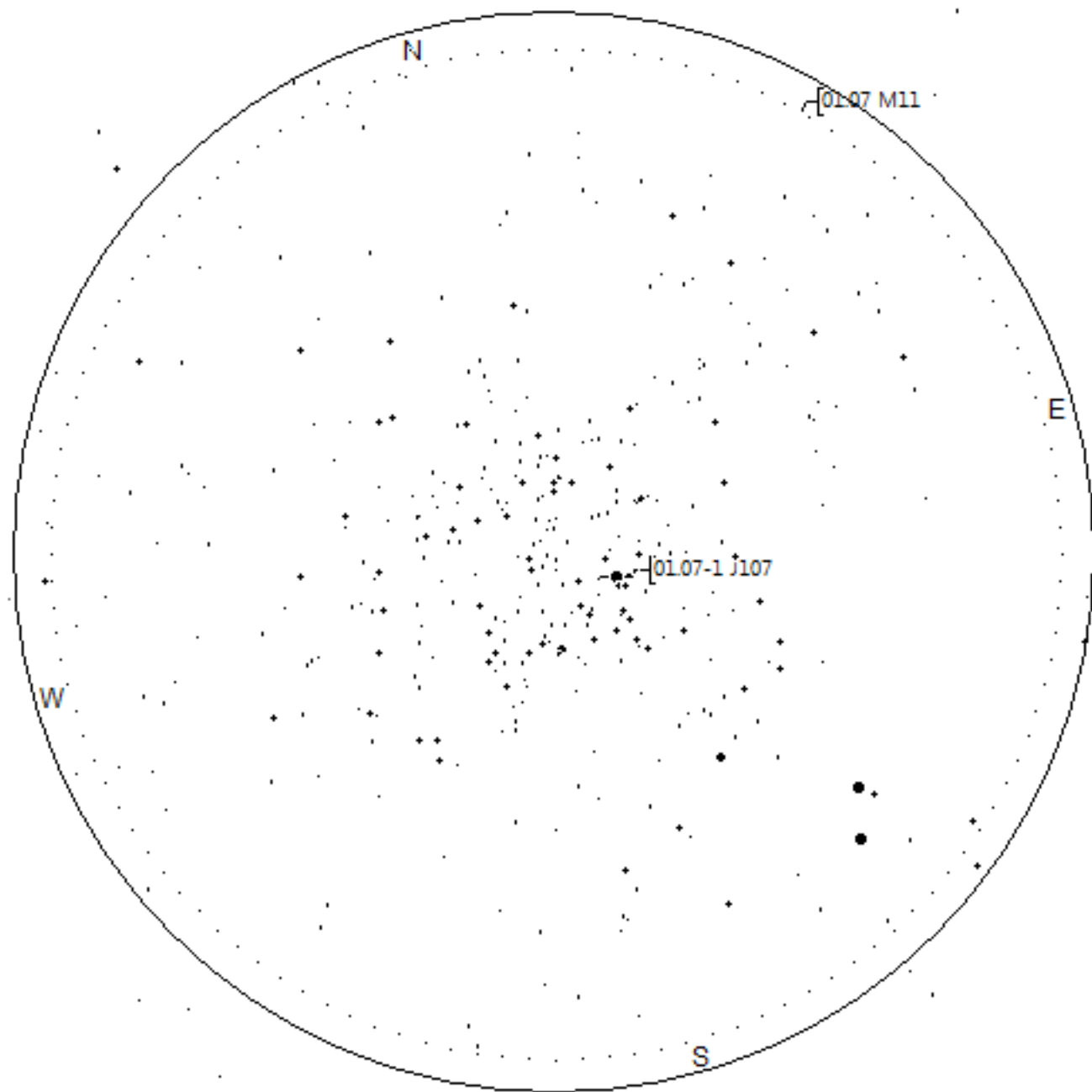


STF2439 - 21.7"DS
+8.6/9.9mag

J2934 - 7.1"DS
+9.4/12mag

STF2425 - 29.3"DS +7.9/8.6mag





STF2425 – 29.3"DS +7.9/8.6mag

< A40 – 2.9"DS +9.12/12.6mag

HDS2695 – 10.9"DS >
+8.75/11.42mag

? J2249 – 7.8"DS
+9.7/10mag

J2248 – 9.7"DS
+9.8/10.2mag

B9036 – 13.4"DS >
+10.56/12.2mag

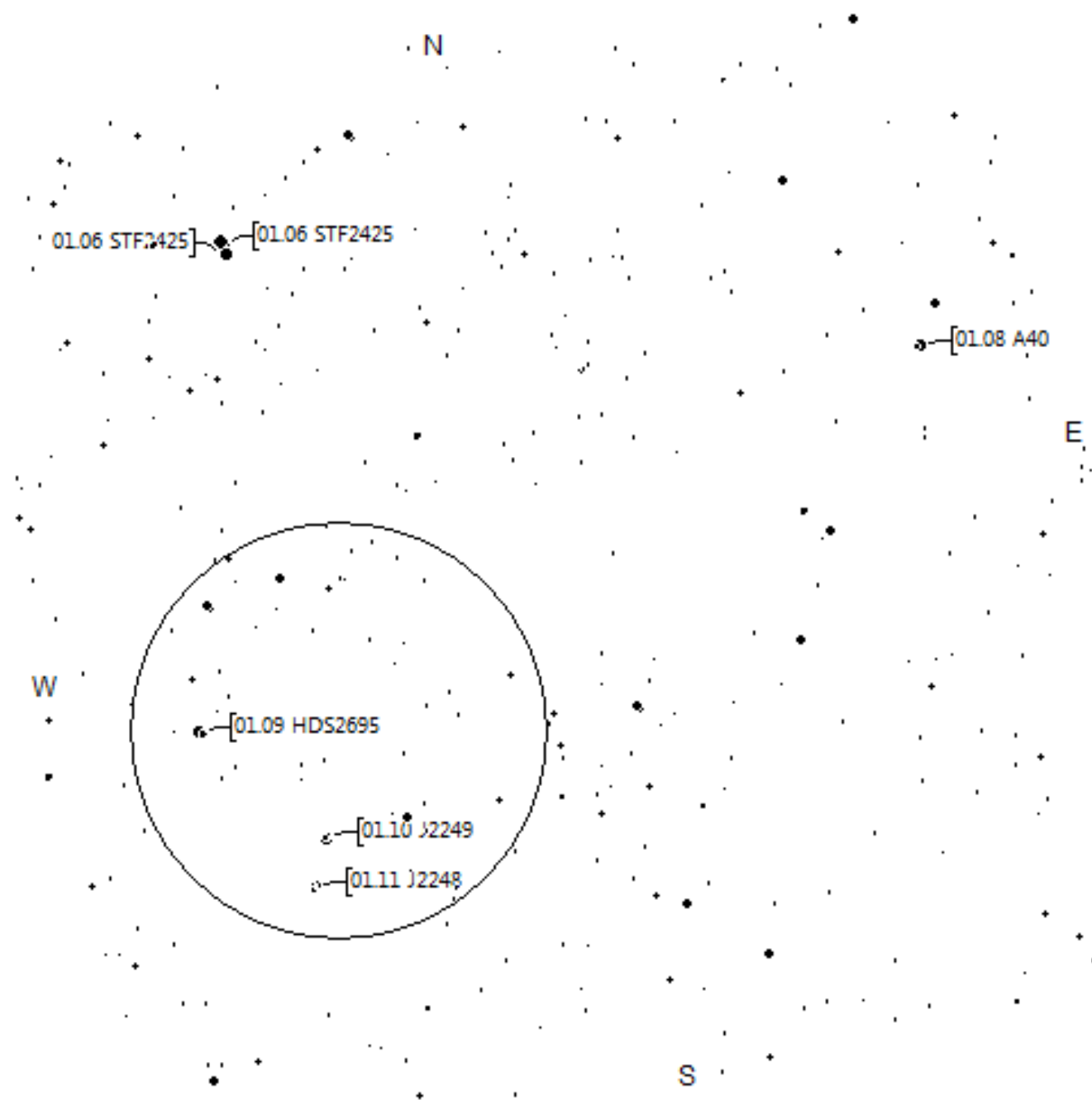
HU71 AB – 0.7"DS
+10.56/10.72mag

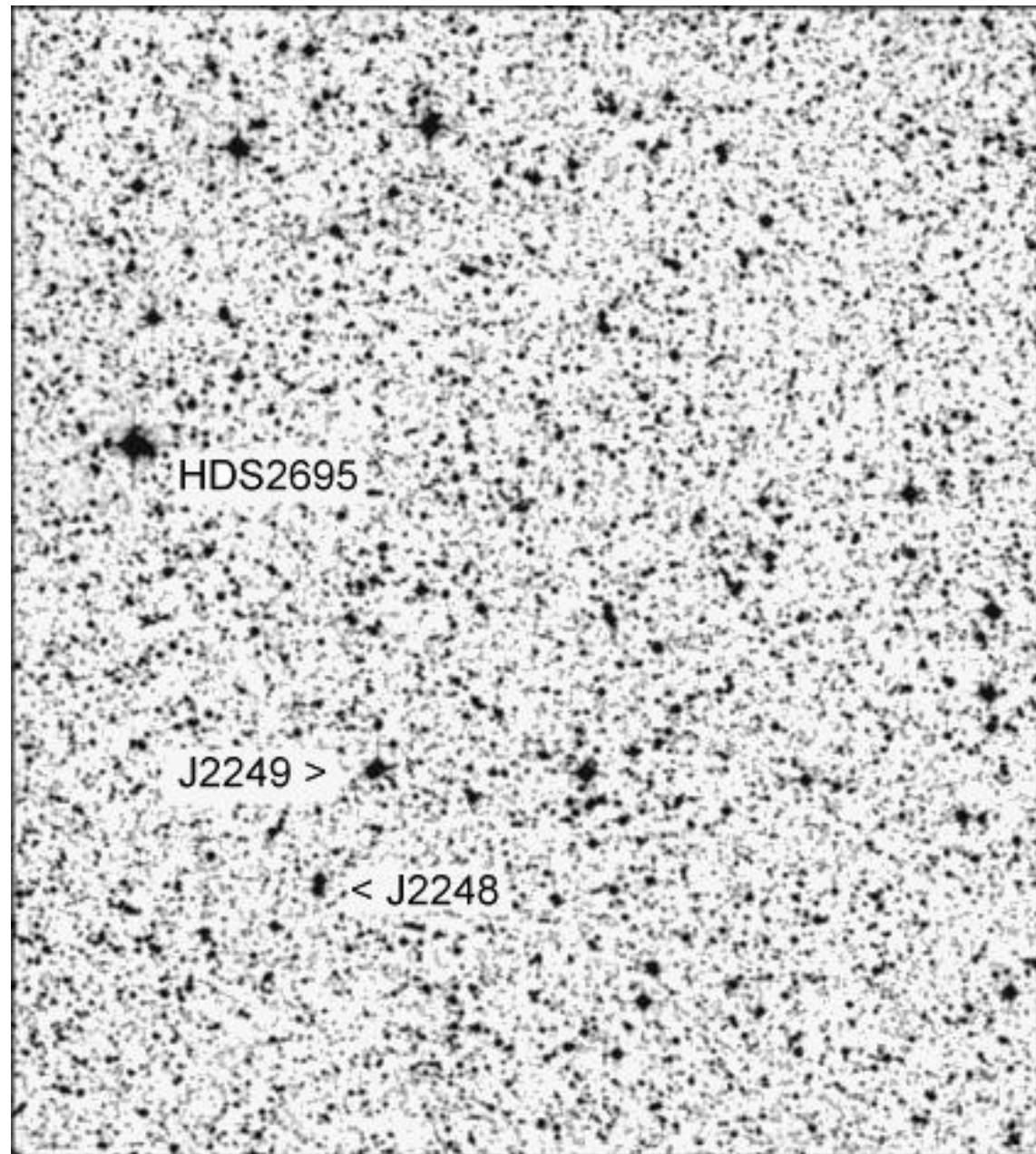
RST4621 AB – 0.9"DS
+9.69/9.71mag

v
^

HJ5096 – 17.8"DS
AB,C +9/9.9mag

HJ5090 – 12.8"DS +9.5/9.5mag





HDS2695

J2249 >

< J2248

