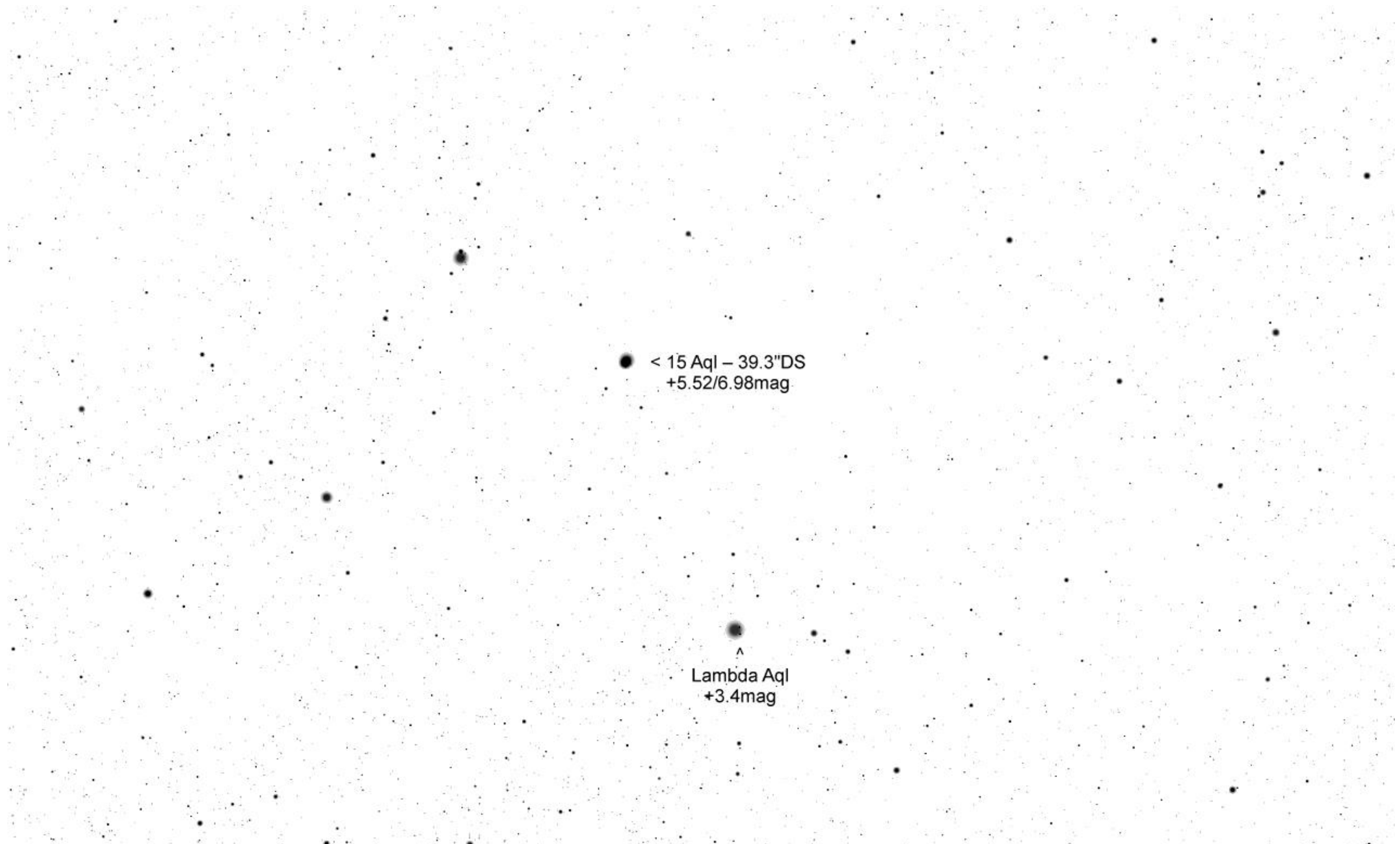
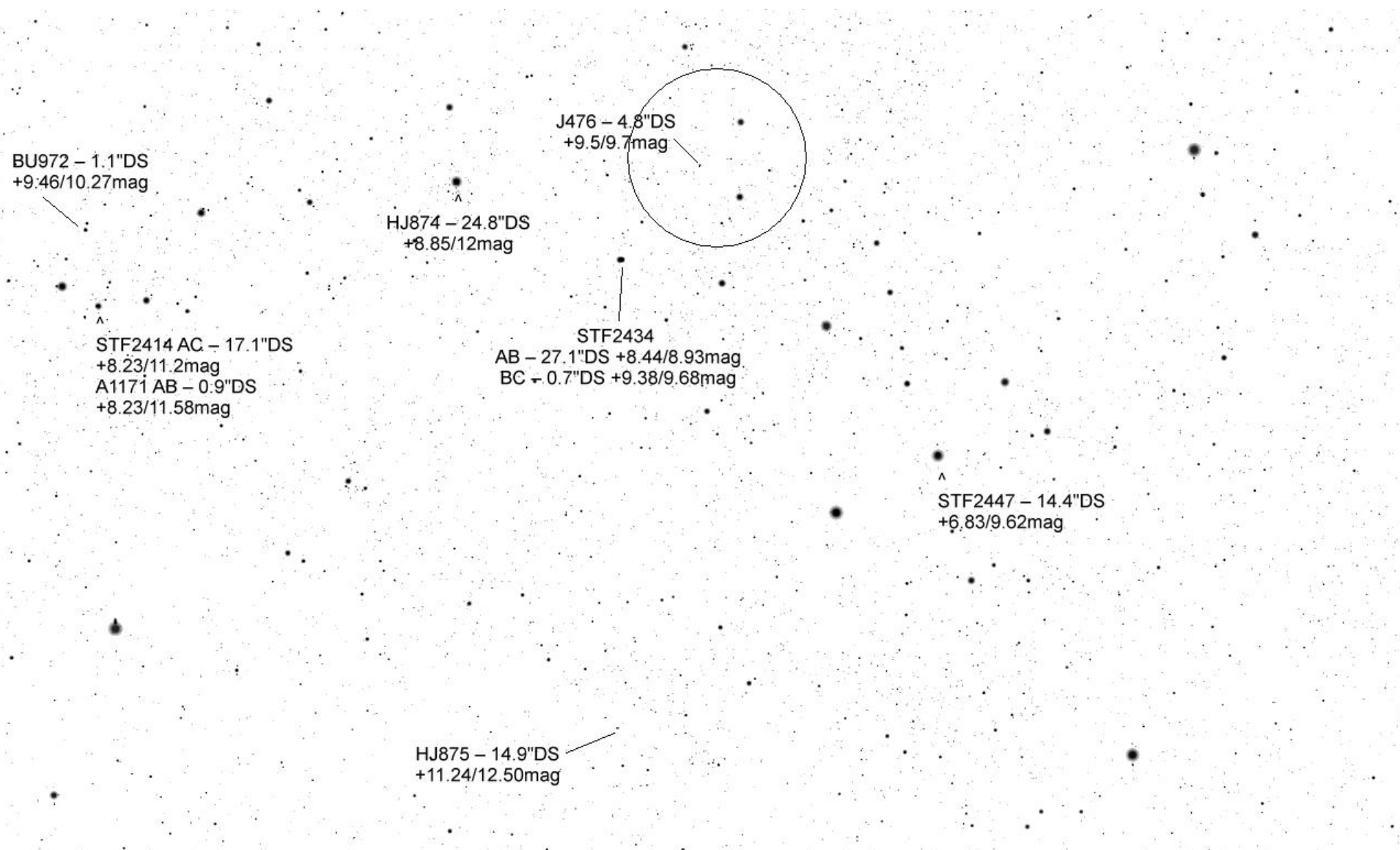


TML Lambda Aql per Mitte August FoV 15'



HJ875 – 14.9"DS
+11.24/12.50mag

● < 15 Aql – 39.3"DS
+5.52/6.98mag



BU972 – 1.1"DS
+9.46/10.27mag

J476 – 4.8"DS
+9.5/9.7mag

HJ874 – 24.8"DS
+8.85/12mag

STF2414 AC – 17.1"DS
+8.23/11.2mag
A1171 AB – 0.9"DS
+8.23/11.58mag

STF2434
AB – 27.1"DS +8.44/8.93mag
BC – 0.7"DS +9.38/9.68mag

STF2447 – 14.4"DS
+6.83/9.62mag

HJ875 – 14.9"DS
+11.24/12.50mag

N

E

W

S

← [02.03 J476



