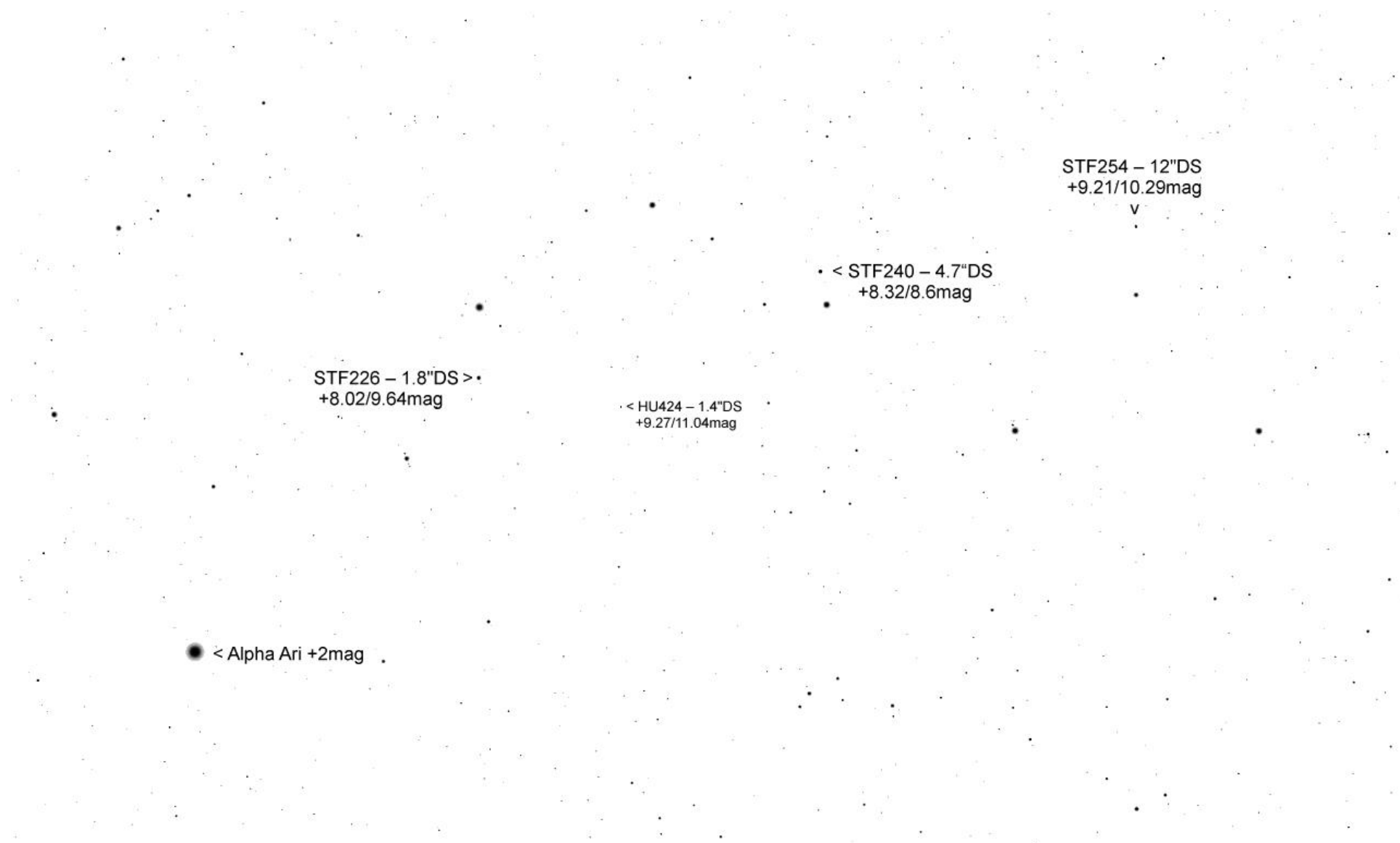


TML Alpha Ari per Mitte Dezember 15' FoV



STF240 – 4.7"DS  
+8.32/8.6mag

v

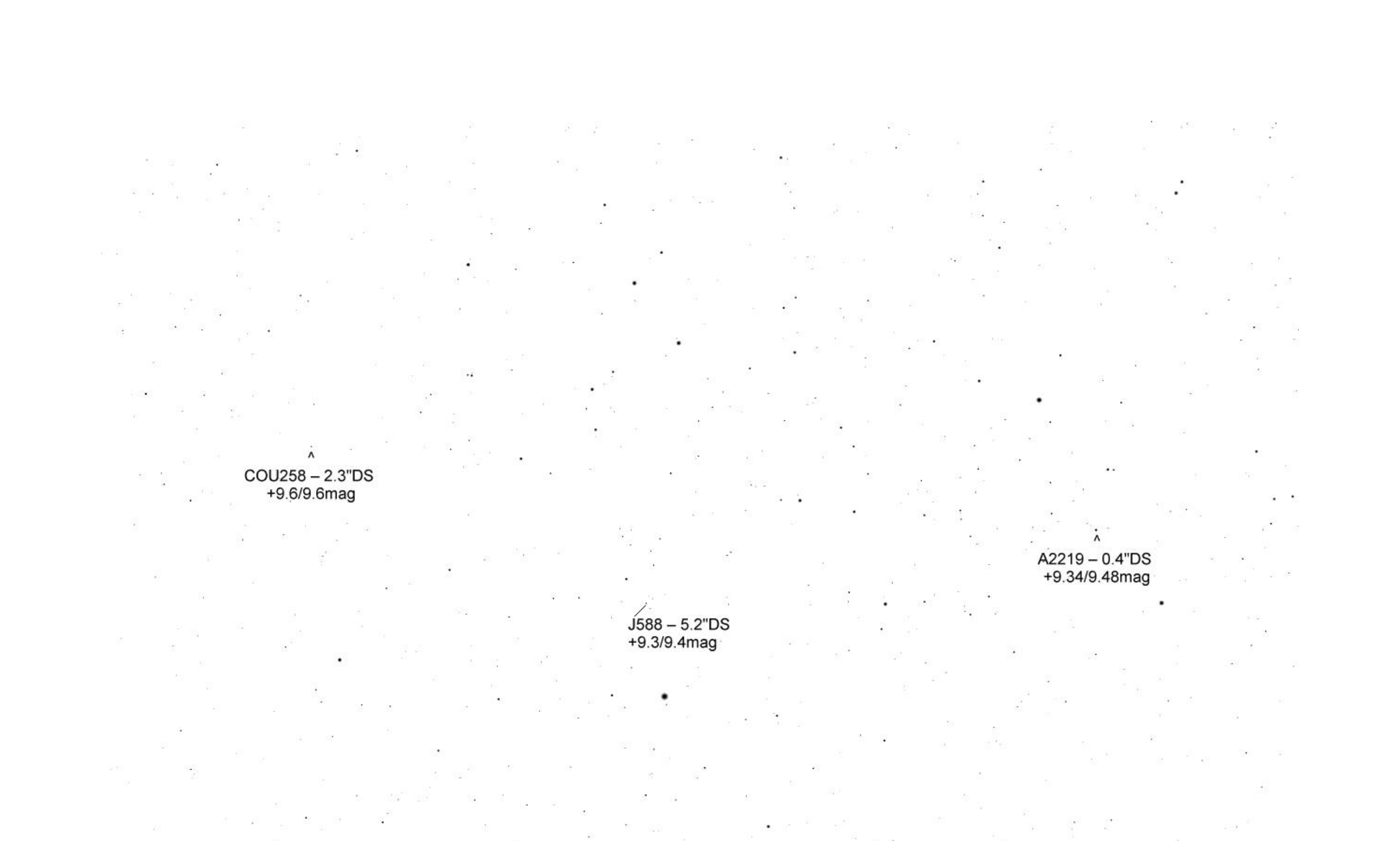
STF254 – 12"DS >  
+9.21/10.29mag

STF244 – 4.4"DS  
+9.28/9.41mag

^

COU258 – 2.3"DS  
+9.6/9.6mag

^



^  
COU258 - 2.3"DS  
+9.6/9.6mag

/  
J588 - 5.2"DS  
+9.3/9.4mag

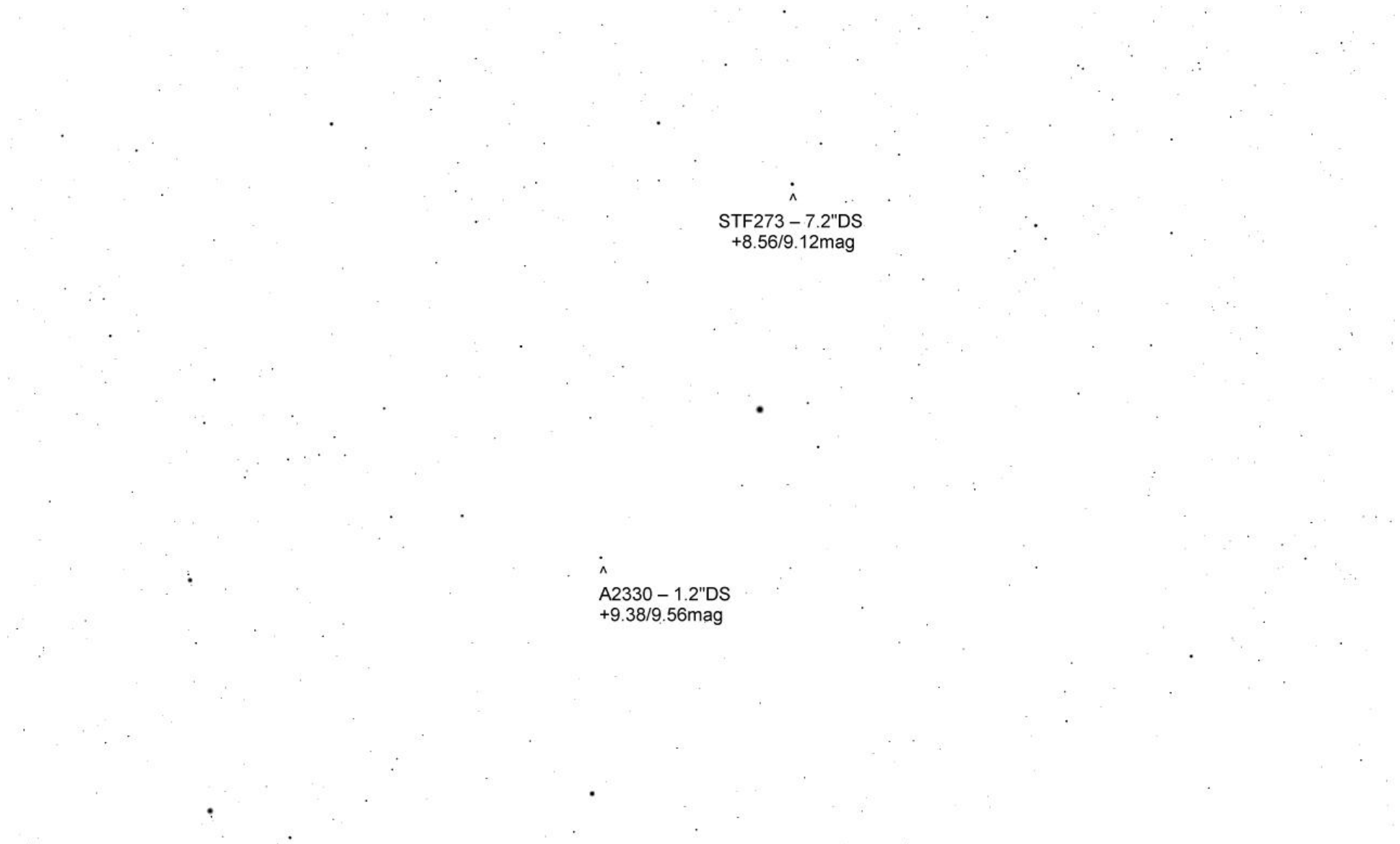
^  
A2219 - 0.4"DS  
+9.34/9.48mag

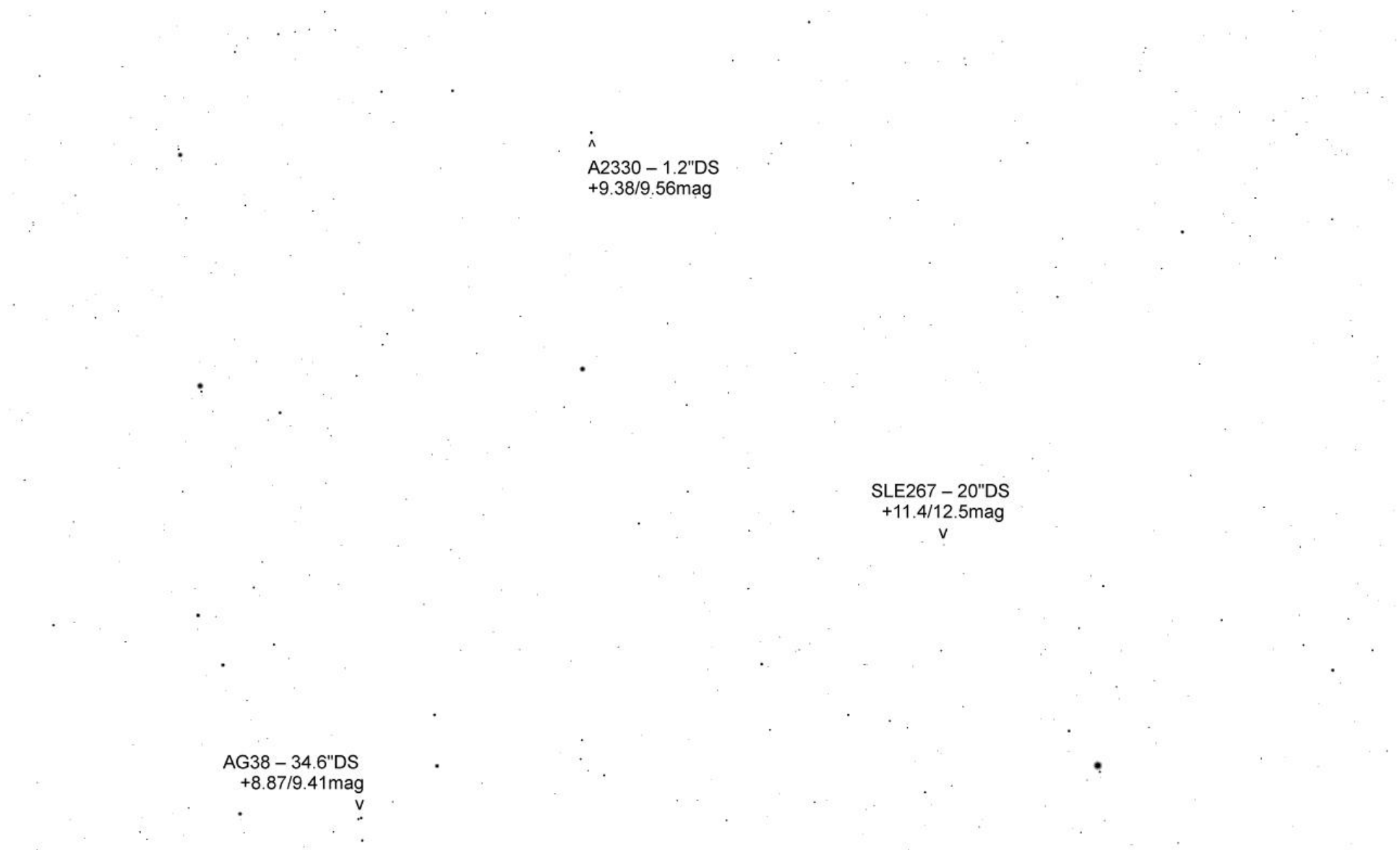
^  
A2219 – 0.4"DS  
+9.34/9.48mag

STF305 – 3.7"DS  
+7.52/8.25mag  
v

STF291 – 3.4"DS  
+7.5/7.66mag  
v

^  
STF273 – 7.2"DS  
+8.56/9.12mag





▲  
A2330 – 1.2"DS  
+9.38/9.56mag

SLE267 – 20"DS  
+11.4/12.5mag  
▼

AG38 – 34.6"DS  
+8.87/9.41mag  
▼



SLE267 – 20"DS  
+11.4/12.5mag  
v

STF287 – 6.6"DS  
+7.36/9.61mag  
v

BU1315 – 1.7"DS  
+8.66/10.22mag

HU1046 – 0.8"DS  
+7.95/10.65mag