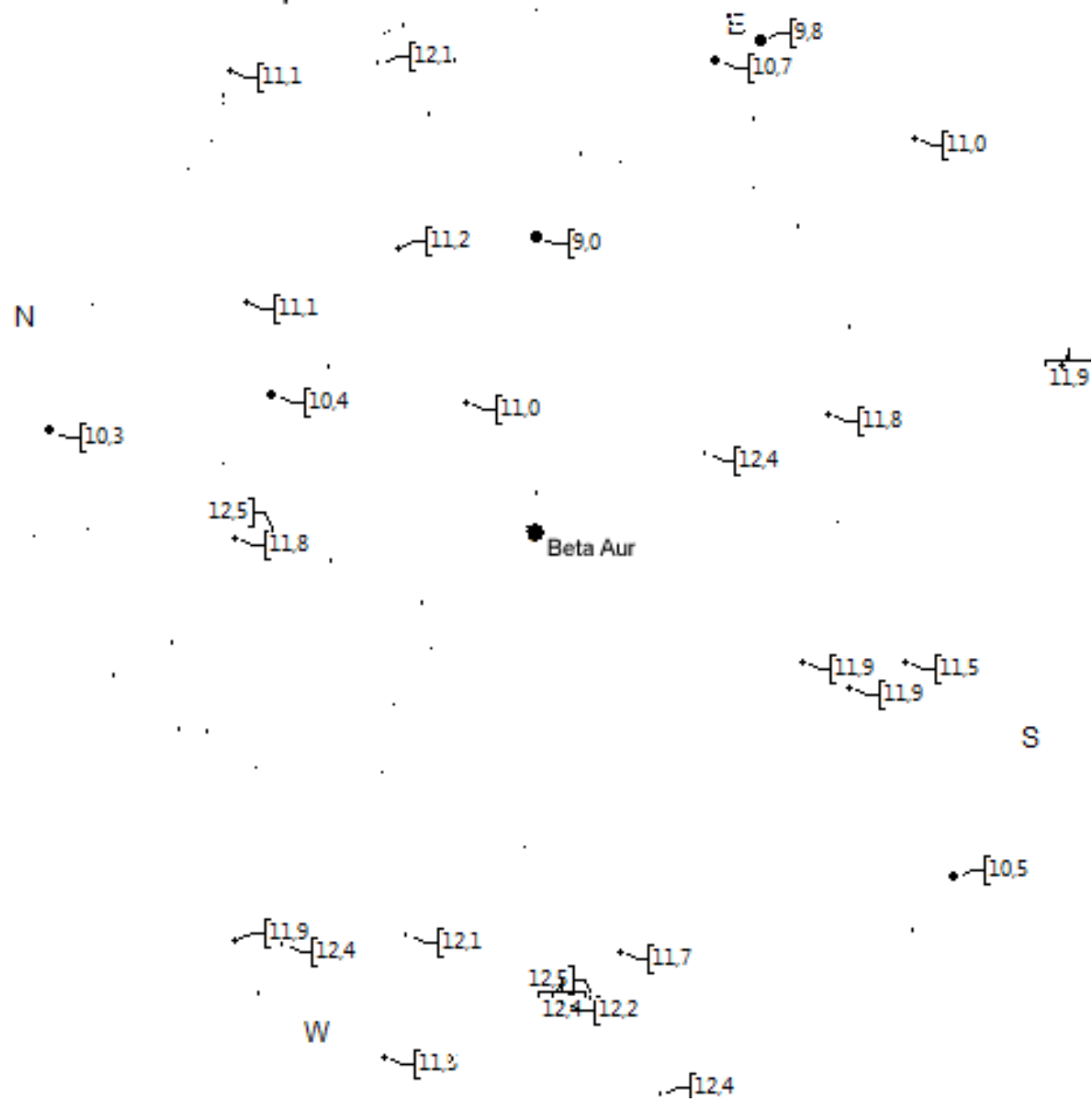


TML Beta Aur 25' per Mitte März



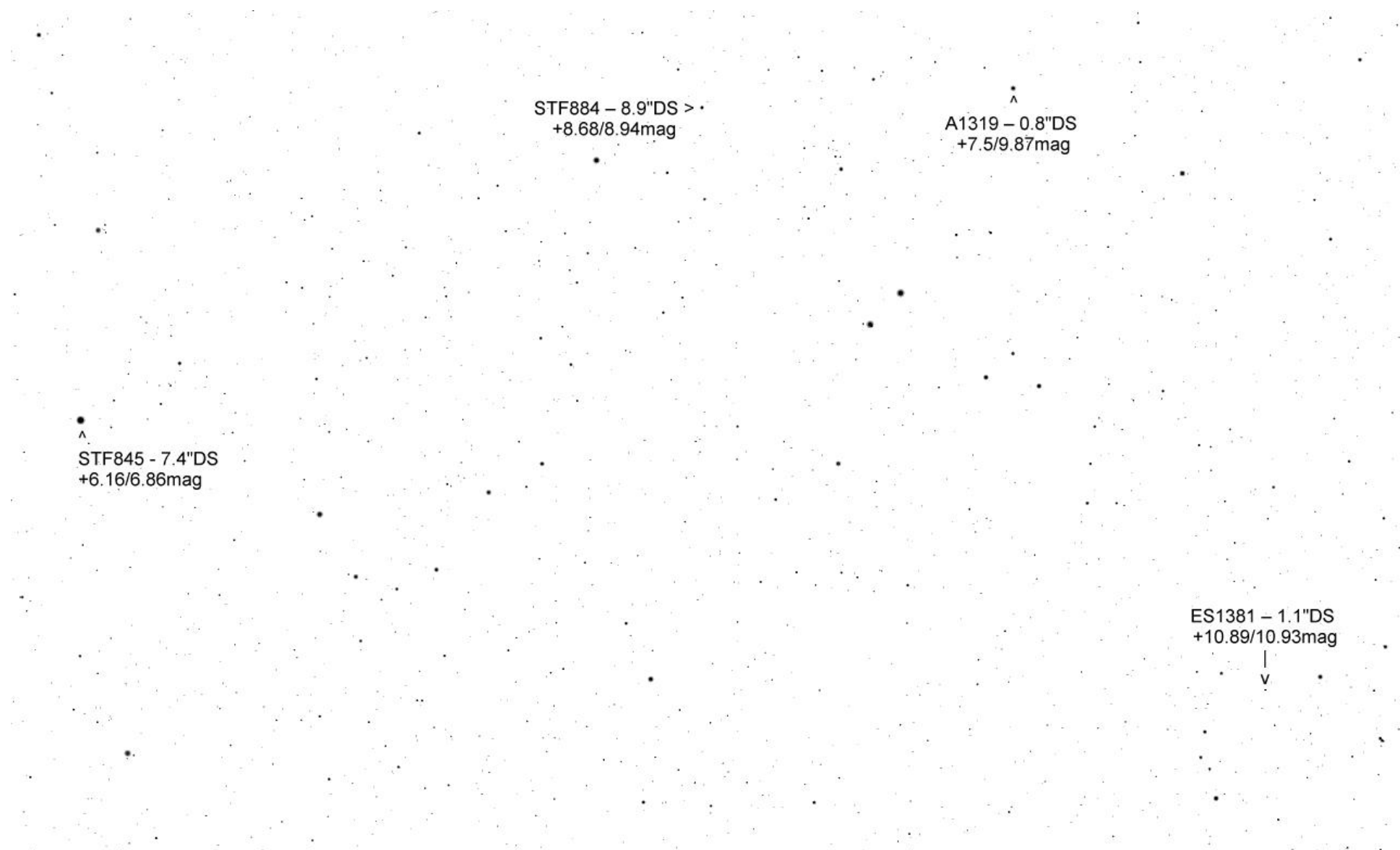
^ ES1381 - 1.1"DS +10.89/10.93mag



^
A1729 - 0.7"DS
+7.52/9.14mag

Beta Aur - 187.2"DS
+1.9/10.86mag





STF884 – 8.9"DS >
+8.68/8.94mag

A1319 – 0.8"DS
+7.5/9.87mag

STF845 - 7.4"DS
+6.16/6.86mag

ES1381 – 1.1"DS
+10.89/10.93mag
v

STF865 - 5.1"DS
+8.12/10.26mag
v

STF845 - 7.4"DS
+6.16/6.86mag
^

STF896 - 18.8"DS
+9.17/9.64mag

STF865 - 5.1"DS
+8.12/10.26mag
v

STF935 - 3.4"DS +9.16/9.86mag

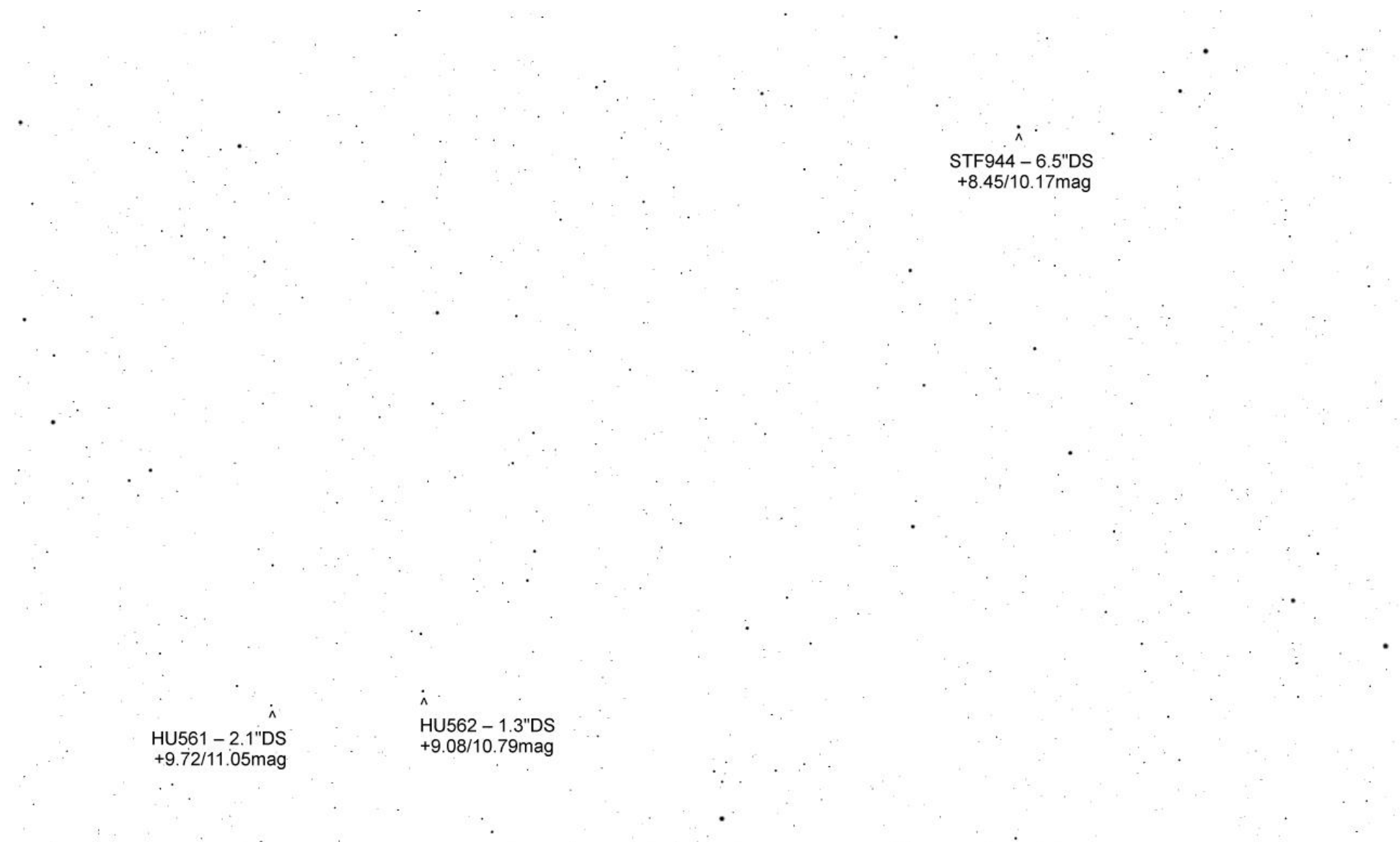
v

• < STF918 - 4.8"DS
+7.26/8.19mag

STF896 - 18.8"DS
+9.17/9.64mag

HU561 - 2.1"DS
+9.72/11.05mag

HU562 - 1.3"DS
+9.08/10.79mag



^
HU561 – 2.1"DS
+9.72/11.05mag

^
HU562 – 1.3"DS
+9.08/10.79mag

^
STF944 – 6.5"DS
+8.45/10.17mag

STF977 – 1.8"DS
+8.76/9.88mag

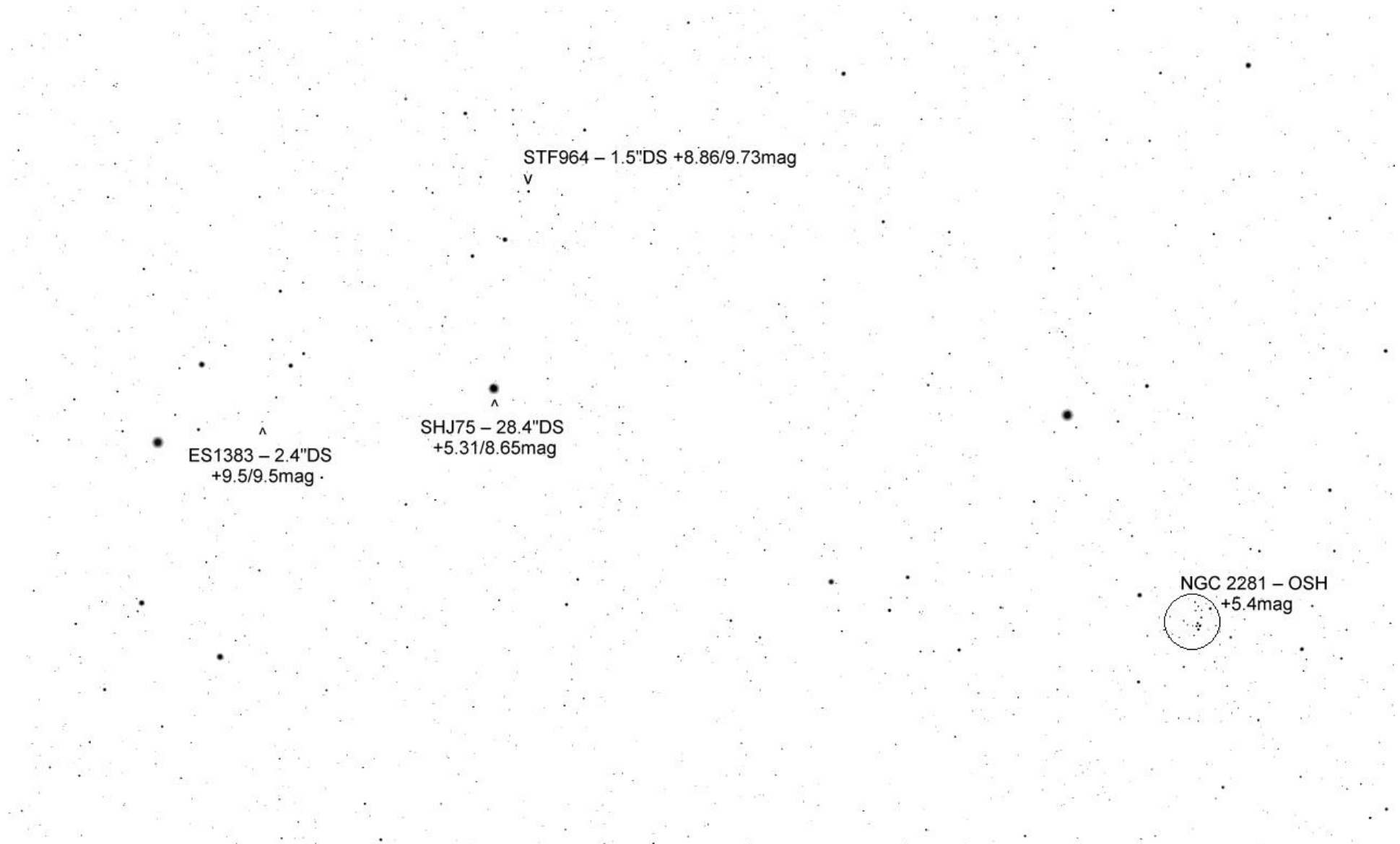
STF979 – 7.4"DS
+8.47/9.58mag

STF944 – 6.5"DS
+8.45/10.17mag

STF979 – 7.4"DS
+8.47/9.58mag

STF964 – 1.5"DS +8.86/9.73mag

SHJ75 – 28.4"DS
+5.31/8.65mag



STF964 – 1.5"DS +8.86/9.73mag

v

SHJ75 – 28.4"DS
+5.31/8.65mag

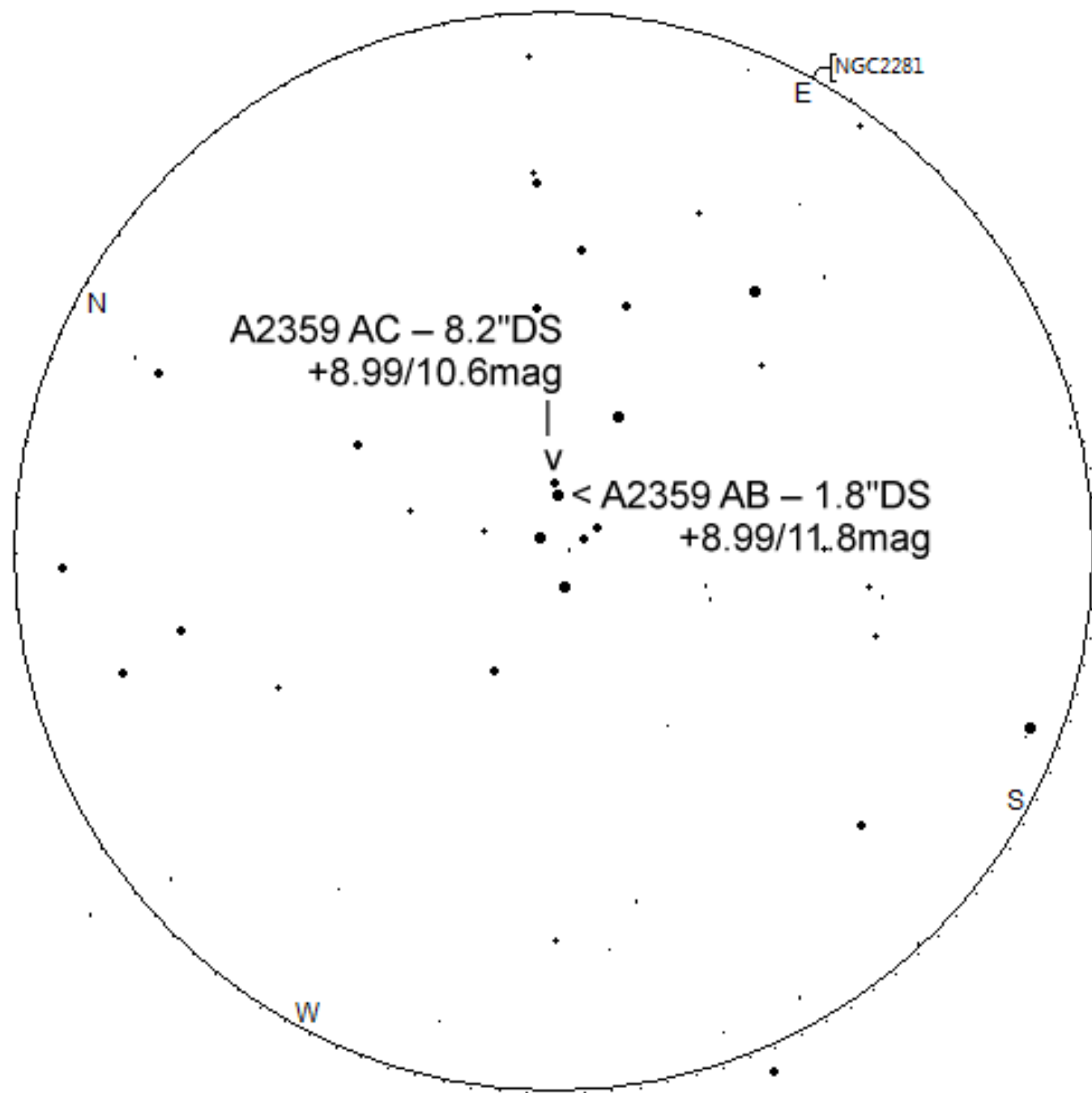
A

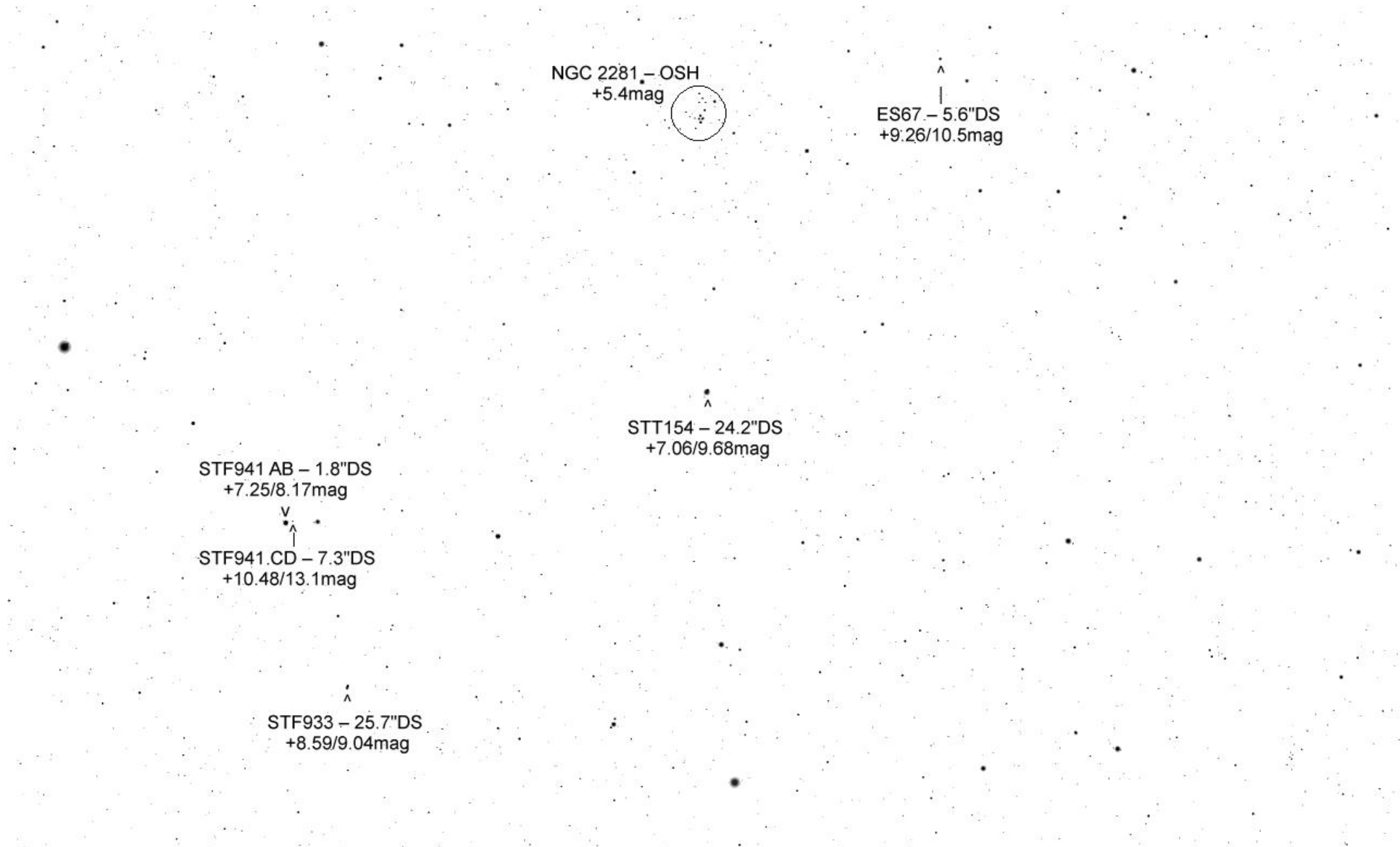
ES1383 – 2.4"DS
+9.5/9.5mag

A

NGC 2281 – OSH
+5.4mag







NGC 2281 - OSH
+5.4mag

ES67 - 5.6"DS
+9.26/10.5mag

STT154 - 24.2"DS
+7.06/9.68mag

STF941 AB - 1.8"DS
+7.25/8.17mag

STF941 CD - 7.3"DS
+10.48/13.1mag

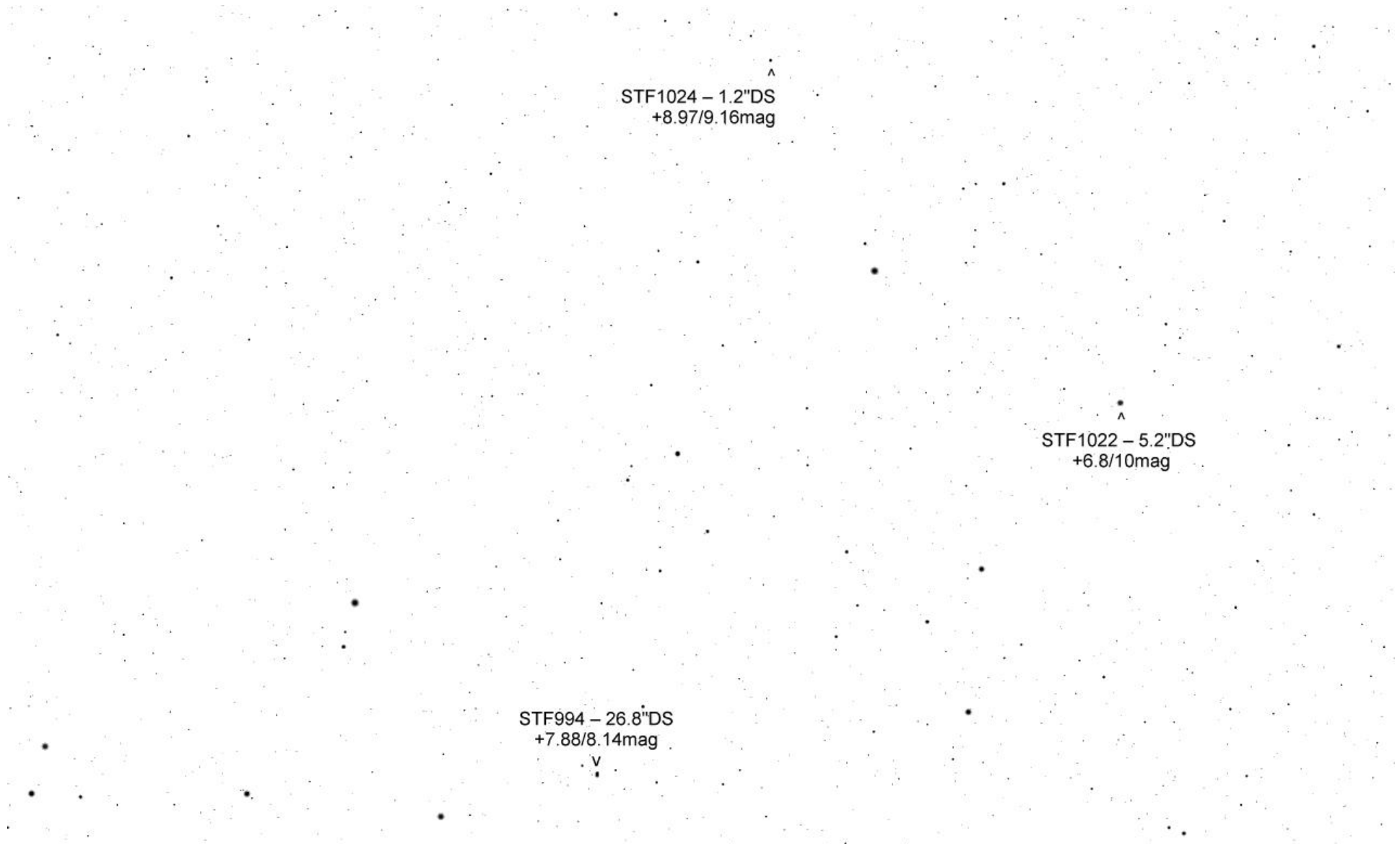
STF933 - 25.7"DS
+8.59/9.04mag

ES67 - 5.6"DS
+9.26/10.5mag

|
v

STF994 AB - 26.8"DS
+7.88/8.14mag
STF994 AC - 9.5"DS > v
+7.88/12.8mag

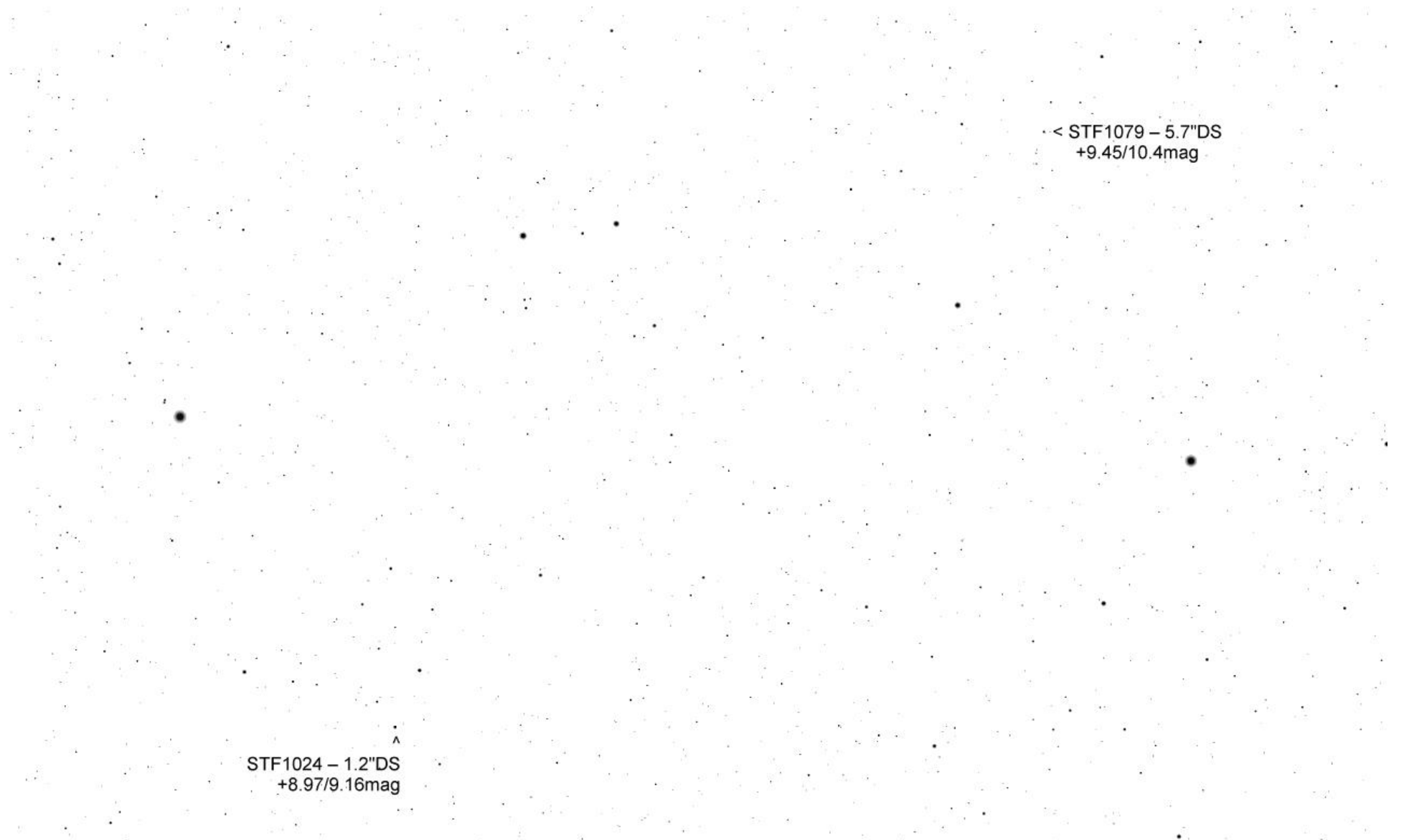
STF978 - 20"DS
+6.85/10mag



^
STF1024 – 1.2"DS
+8.97/9.16mag

^
STF1022 – 5.2"DS
+6.8/10mag

v
STF994 – 26.8"DS
+7.88/8.14mag



< STF1079 – 5.7"DS
+9.45/10.4mag

STF1024 – 1.2"DS
+8.97/9.16mag

A2467 – 1.4"DS
+10.18/10.29mag
v

< STF1079 – 5.7"DS
+9.45/10.4mag

^
STF1086 – 11.6"DS
+8.01/10.11mag

<
ES586 – 13.6"DS
+7.8/11.2mag

A2467 – 1.4"DS
+10.18/10.29mag
v