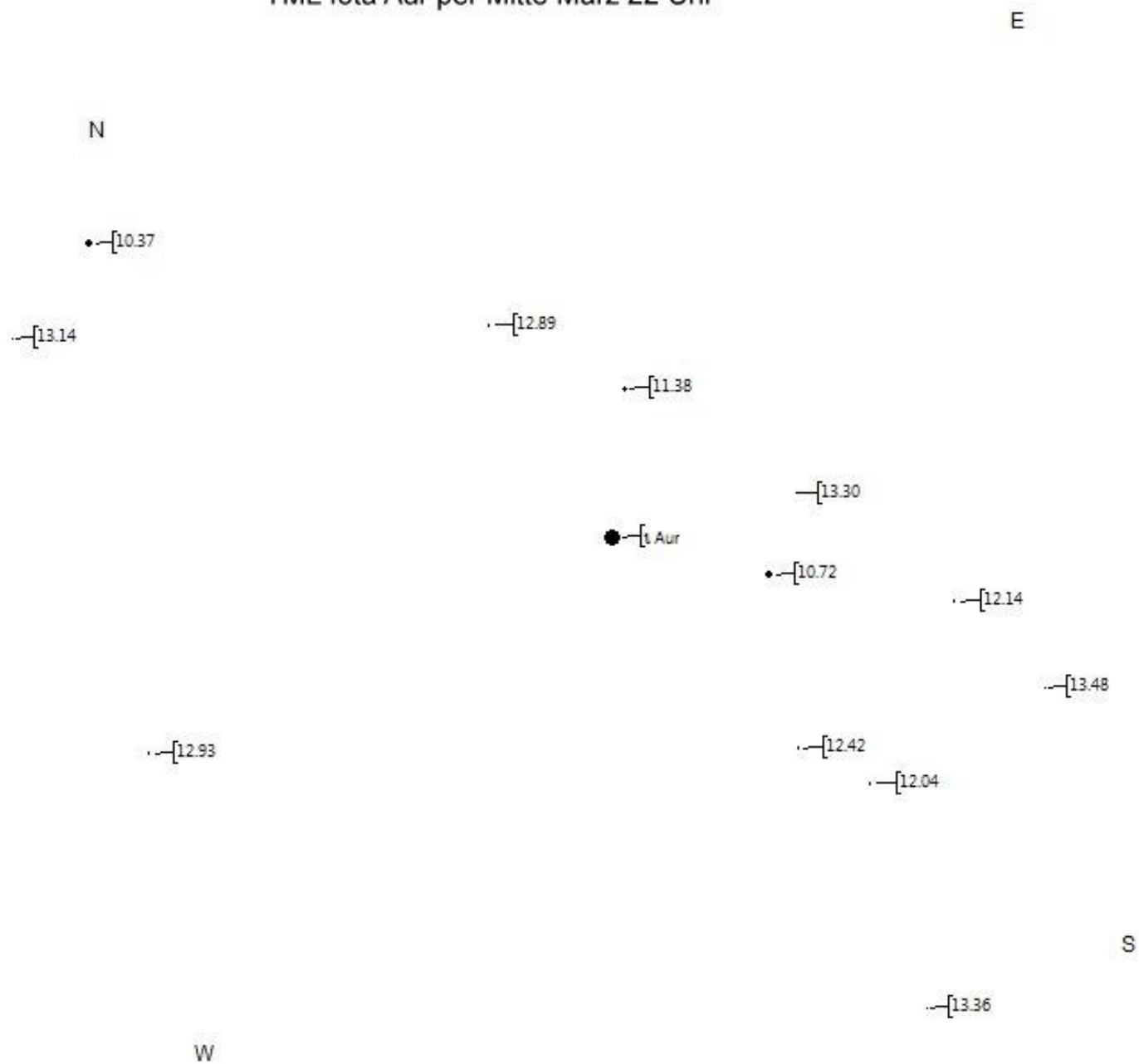
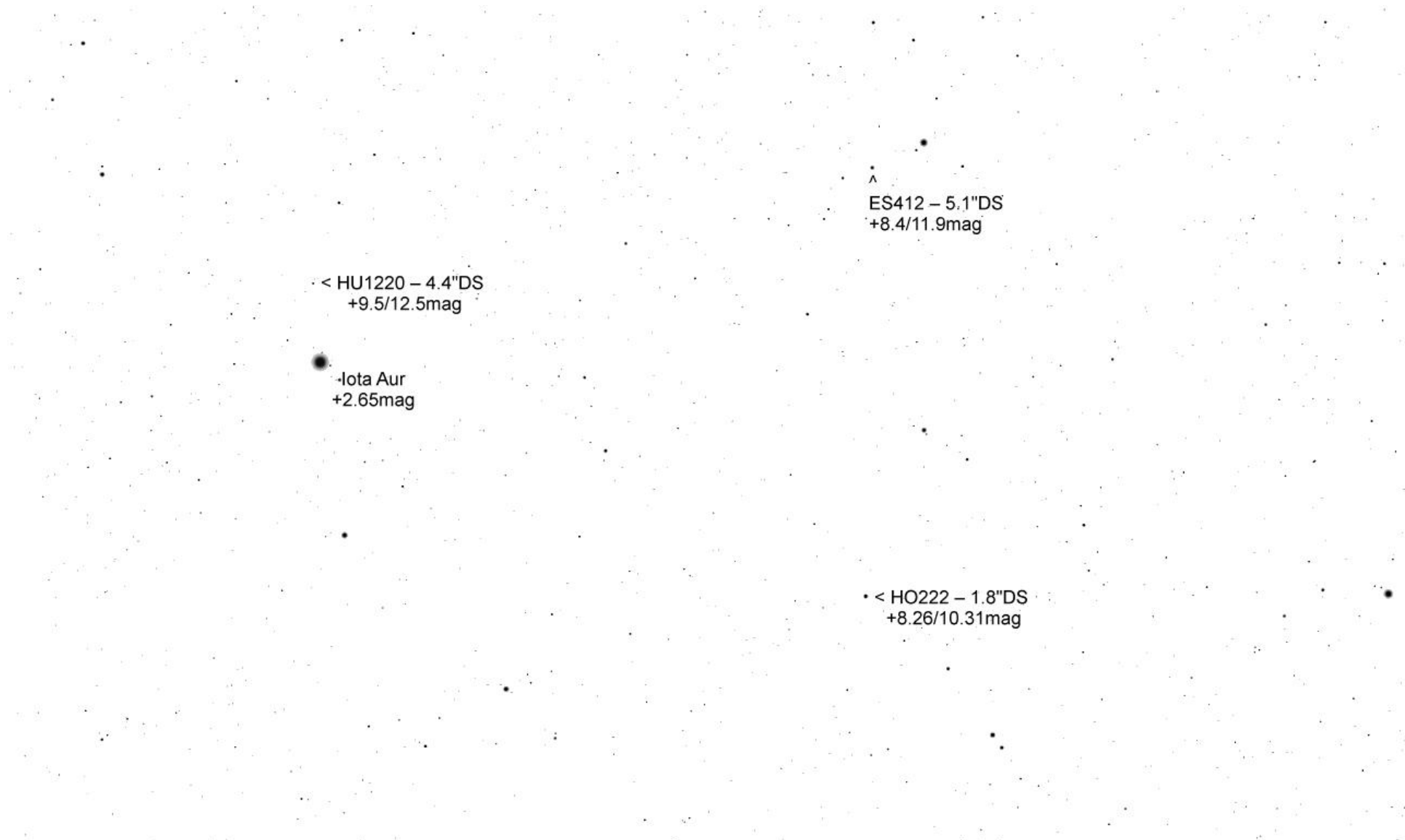
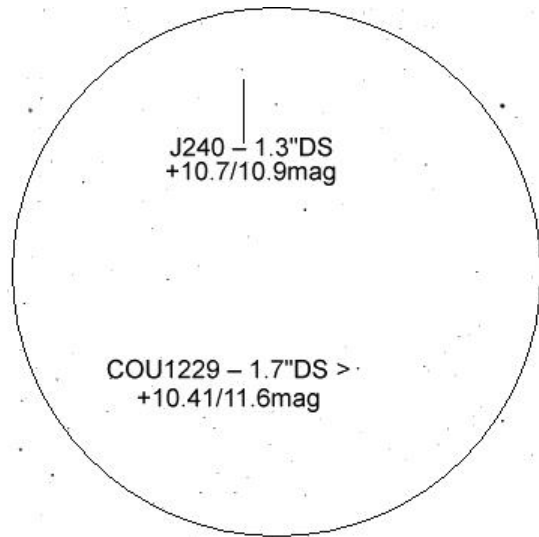


TML Iota Aur per Mitte März 22 Uhr







J240 - 1.3"DS
+10.7/10.9mag

COU1229 - 1.7"DS >
+10.41/11.6mag

< HU1221 - 3.7"DS
+9.35/11.1mag

< STF640 - 9.3"DS
+8.7/10mag

^
ES412 - 5.1"DS
+8.4/11.9mag

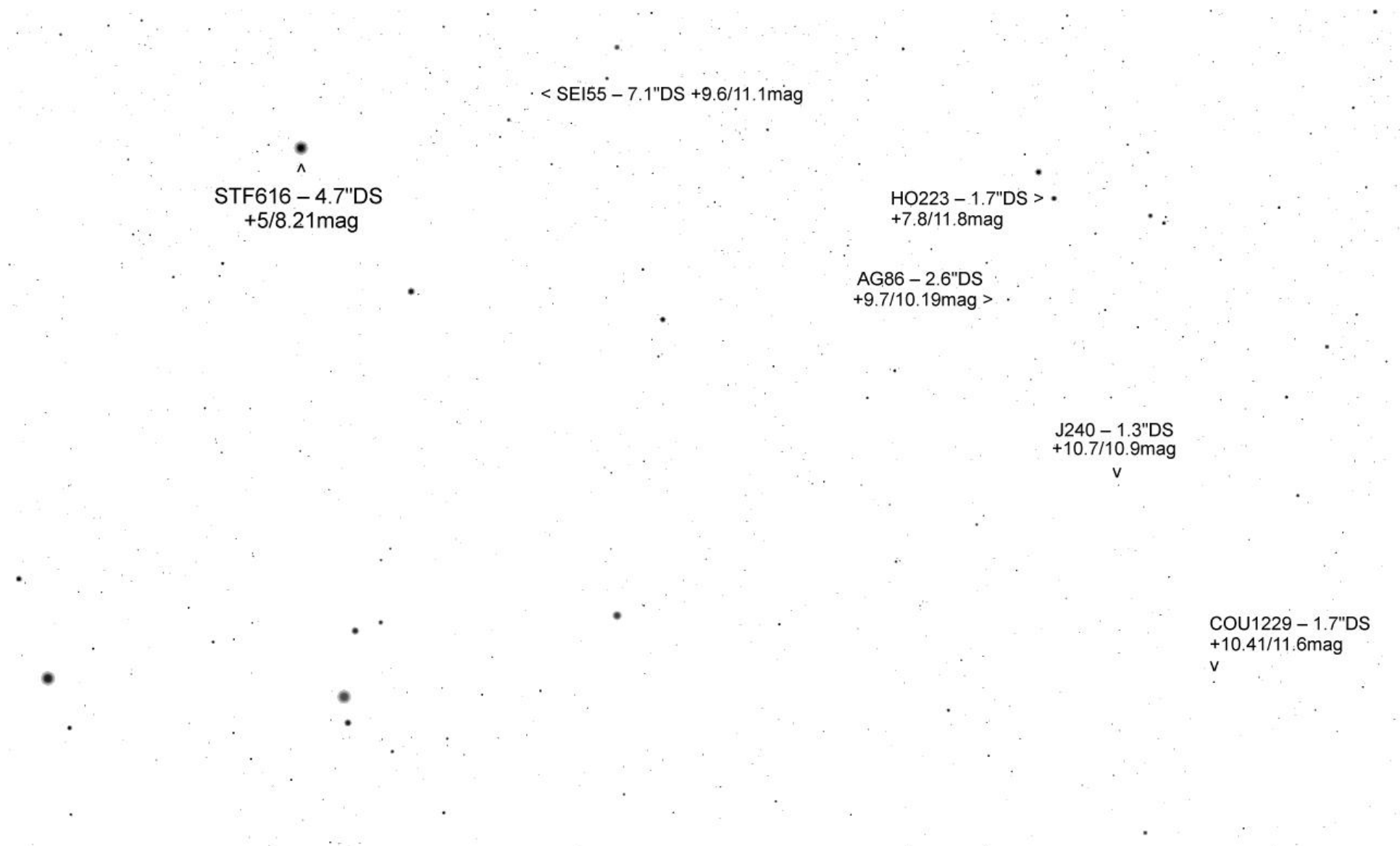
< HU1220 - 4.4"DS
+9.5/12.4mag

Iota Aur +2.65mag

J240 – 1.3"DS
+10.7/10.9mag

COU1229 – 1.7"DS
+10.41/11.6mag

HU1221 – 3.7"DS >
+9.35/11.1mag



STF616 – 4.7"DS
+5/8.21mag

< SEI55 – 7.1"DS +9.6/11.1mag

HO223 – 1.7"DS >
+7.8/11.8mag

AG86 – 2.6"DS
+9.7/10.19mag >

J240 – 1.3"DS
+10.7/10.9mag
v

COU1229 – 1.7"DS
+10.41/11.6mag
v

COU1532 – 1.1"DS
+8.25/10.43mag
v

STF644 – 1.6"DS
+6.78/6.96mag

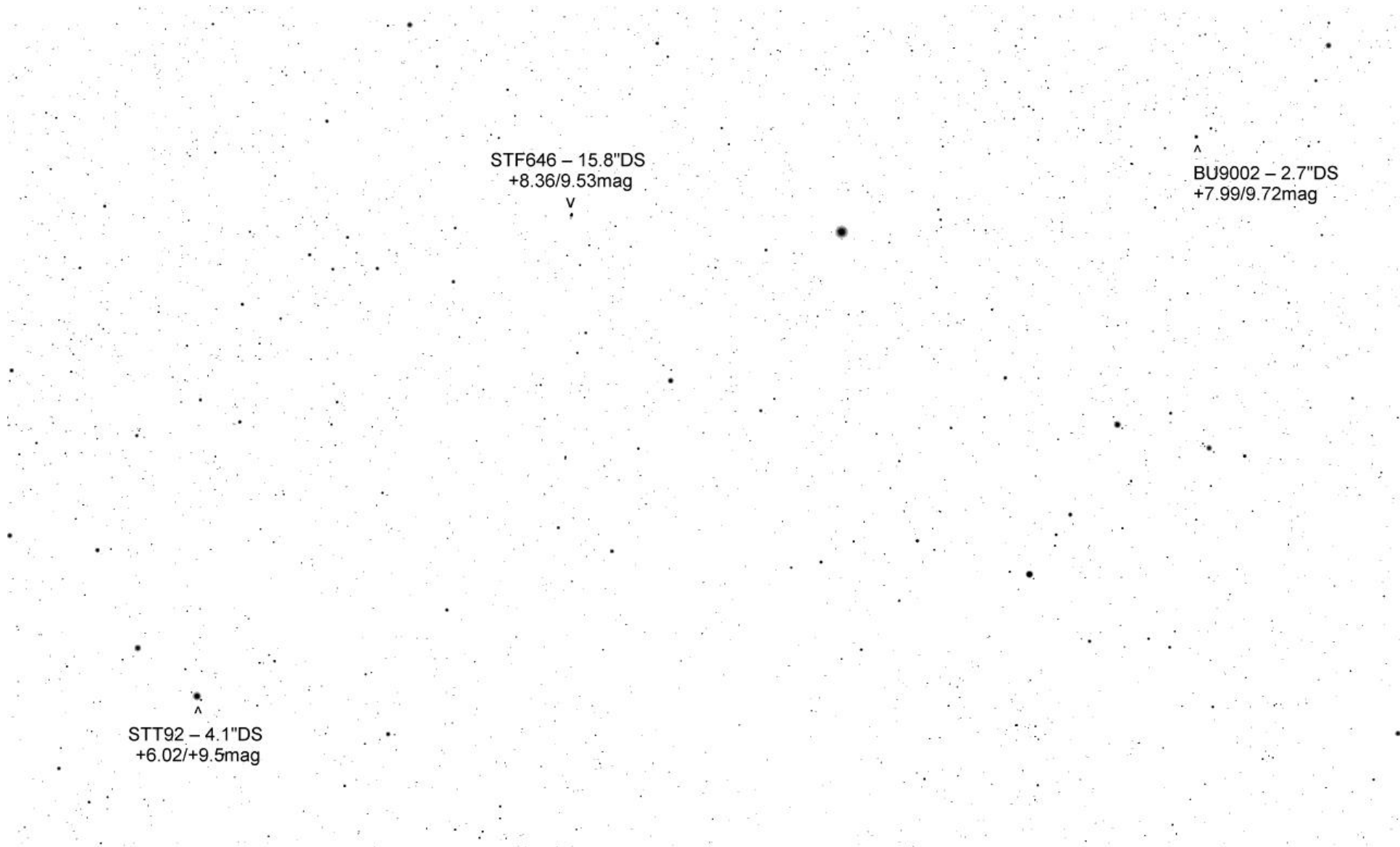
STT92 – 4.1"DS
+6/+9.5mag

< STF621 – 9.9"DS +9.83/10.3mag

NGC 1778 – OSH
+7.7mag

< SEI55 – 7.1"DS +9.6/11.1mag

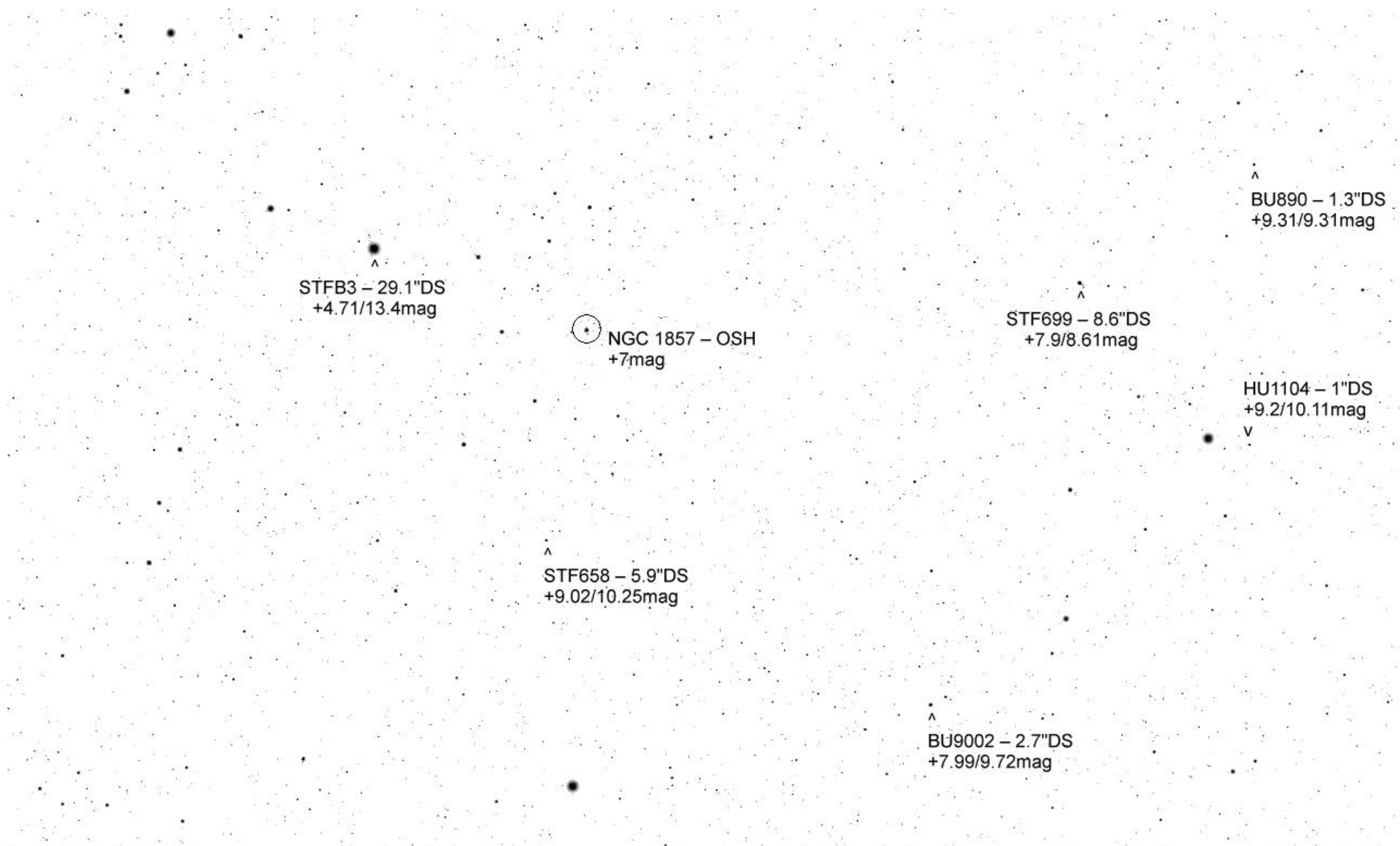
STF616 – 4.7"DS +5/8.21mag



STF646 – 15.8"DS
+8.36/9.53mag
v

^
BU9002 – 2.7"DS
+7.99/9.72mag

^
STT92 – 4.1"DS
+6.02/+9.5mag



STFB3 – 29.1"DS
+4.71/13.4mag

NGC 1857 – OSH
+7mag

STF699 – 8.6"DS
+7.9/8.61mag

BU890 – 1.3"DS
+9.31/9.31mag

HU1104 – 1"DS
+9.2/10.11mag

STF658 – 5.9"DS
+9.02/10.25mag

BU9002 – 2.7"DS
+7.99/9.72mag