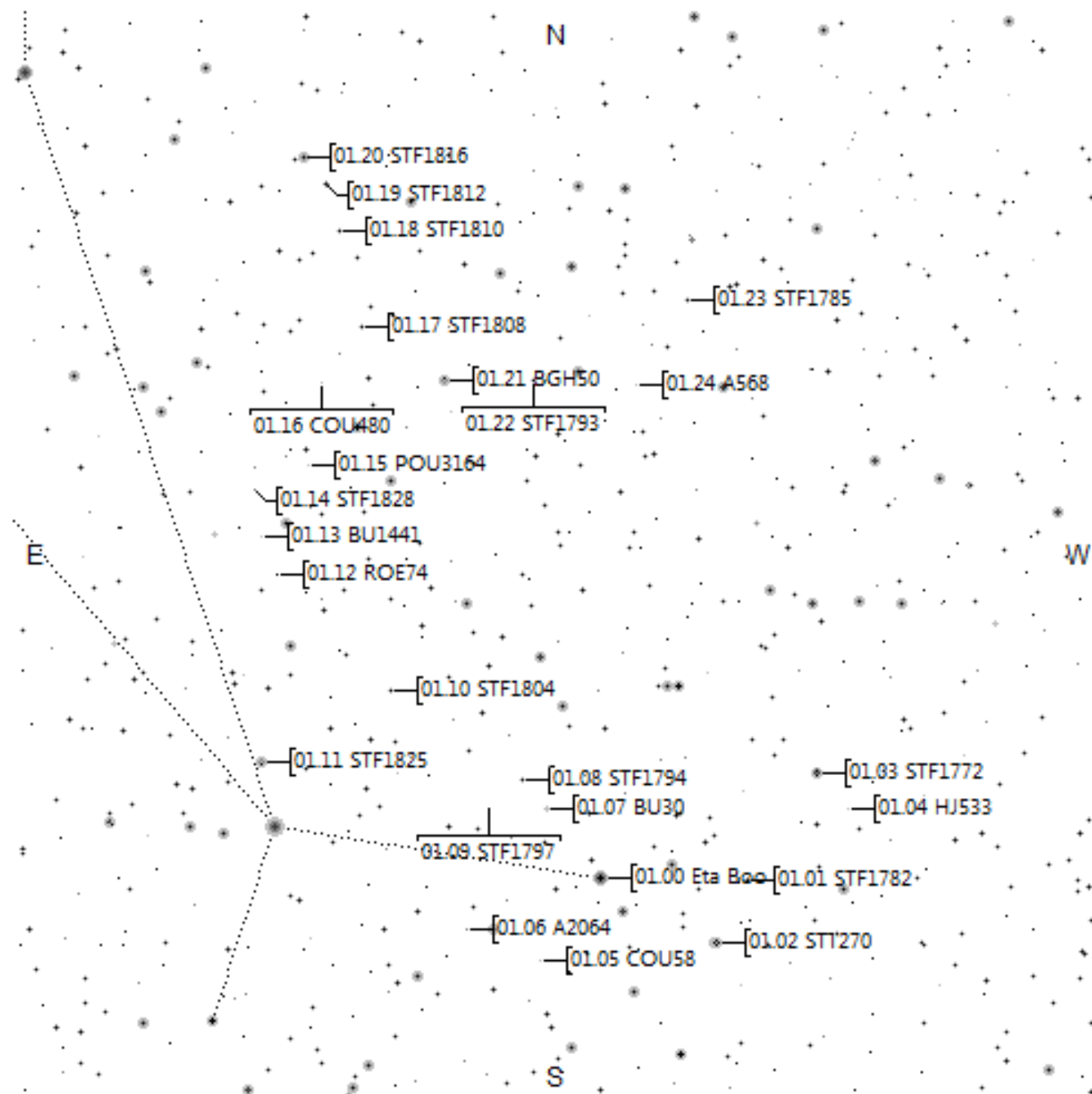
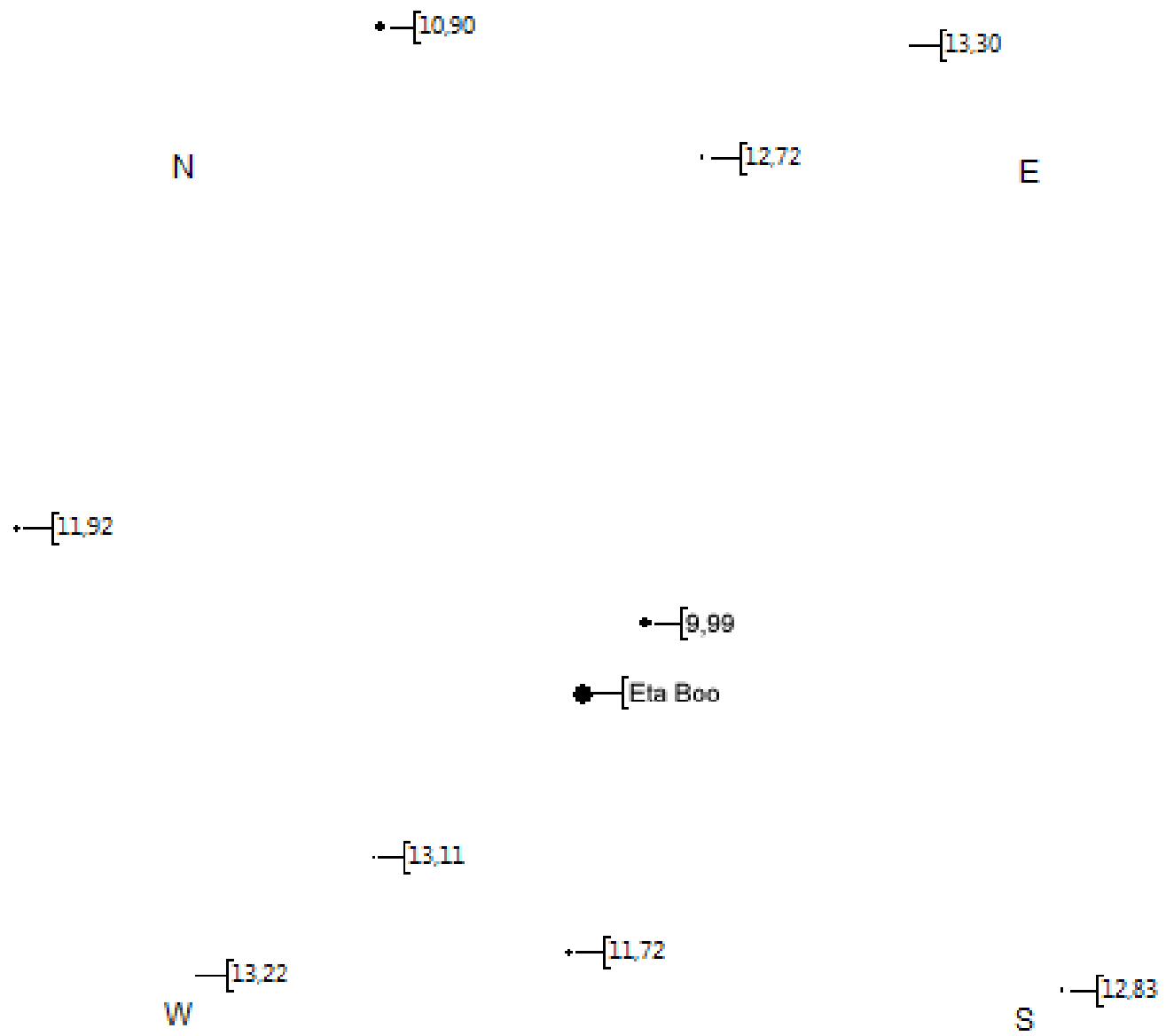
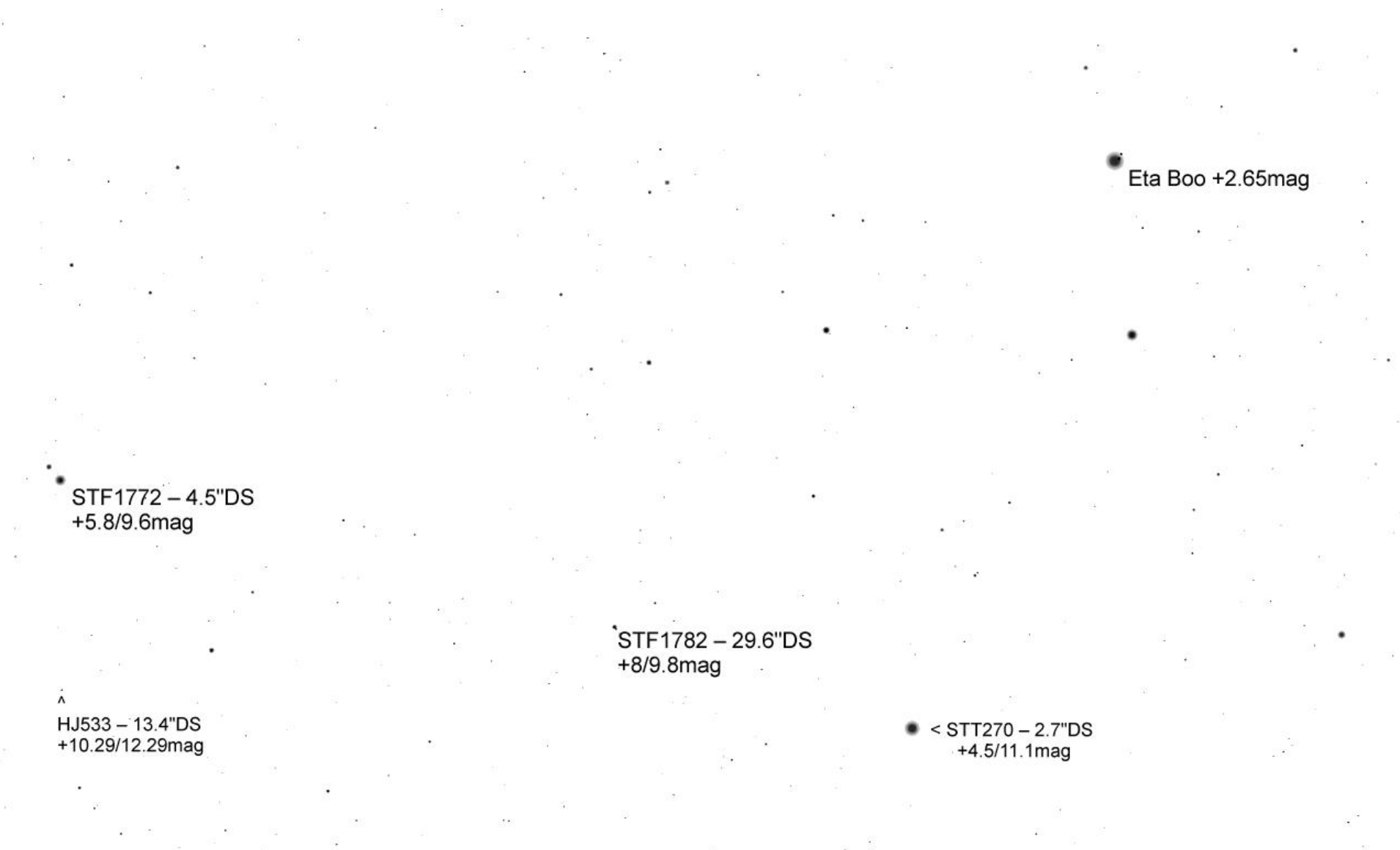


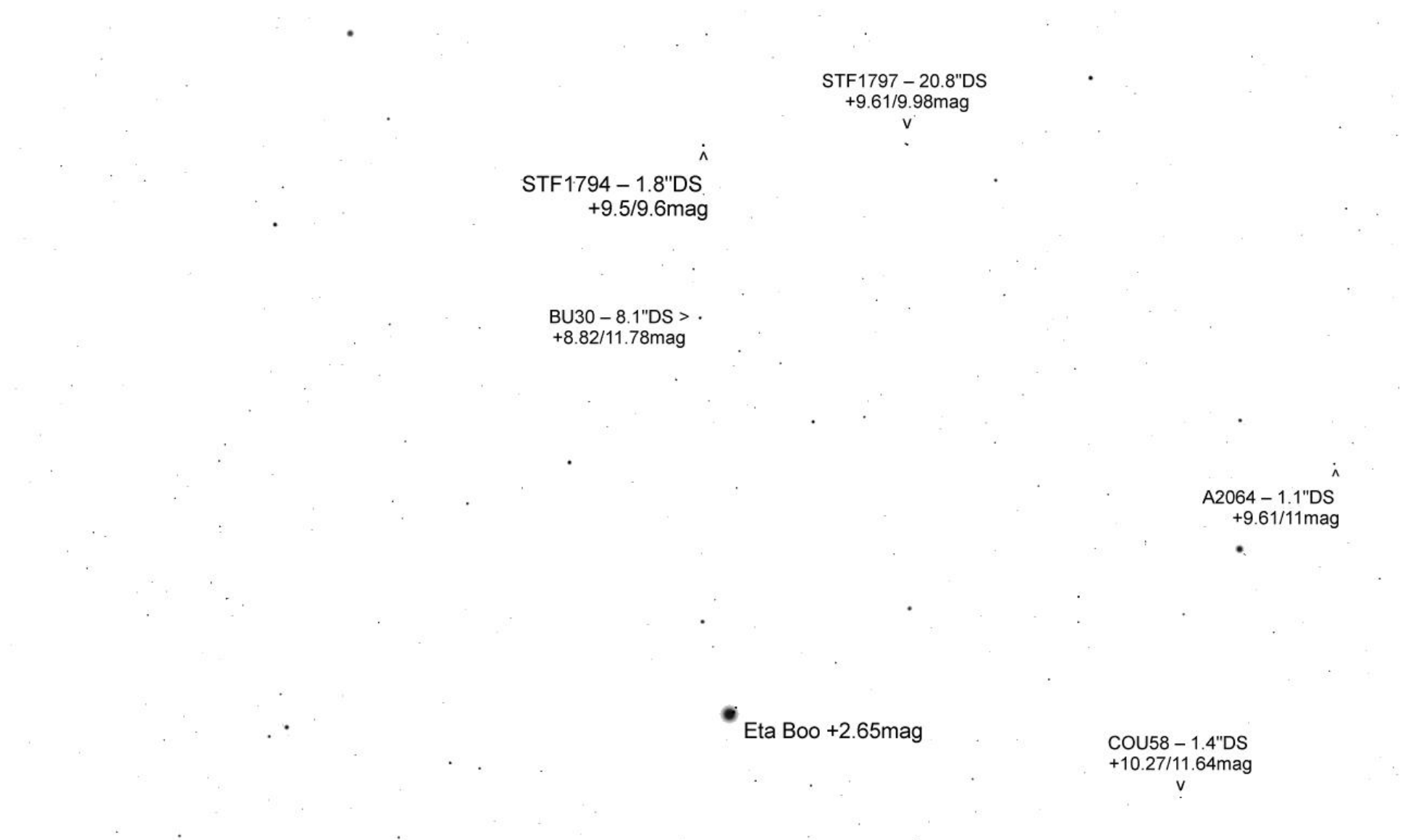
Bärenhüter

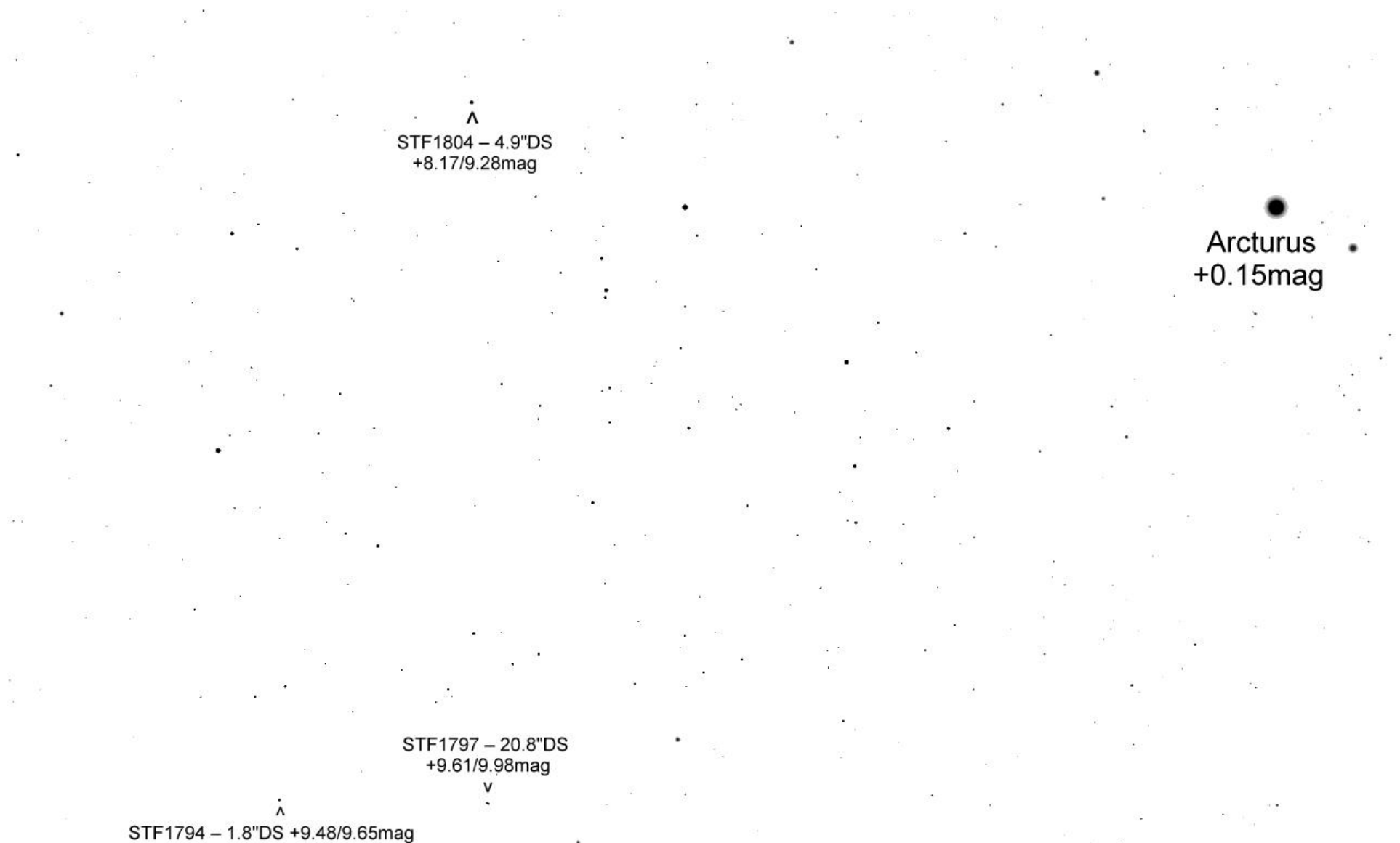




TML Eta Boo per Mitte Juli 25' FoV





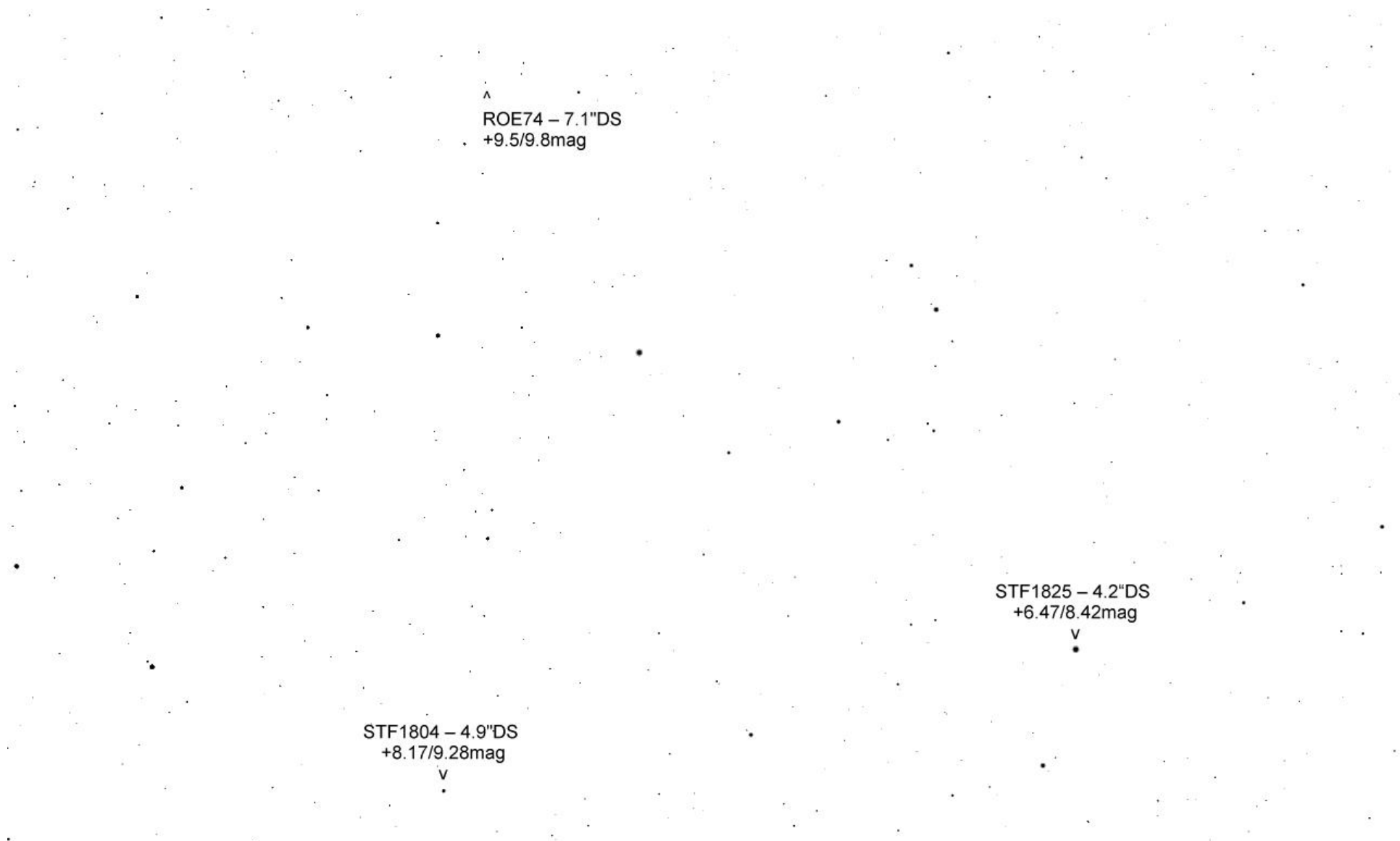


^
STF1804 – 4.9"DS
+8.17/9.28mag

Arcturus
+0.15mag

STF1797 – 20.8"DS
+9.61/9.98mag
v

^
STF1794 – 1.8"DS +9.48/9.65mag



^
ROE74 – 7.1"DS
+9.5/9.8mag

STF1825 – 4.2"DS
+6.47/8.42mag

STF1804 – 4.9"DS
+8.17/9.28mag

STF1808 – 2.6"DS
+8.83/9.63mag

v

COU480 – 2.1"DS
+9.9/12.4mag

STF1828 – 2.1"DS
+10.4/10.75mag

v

< POU3164 – 11"DS
+10/13.2mag

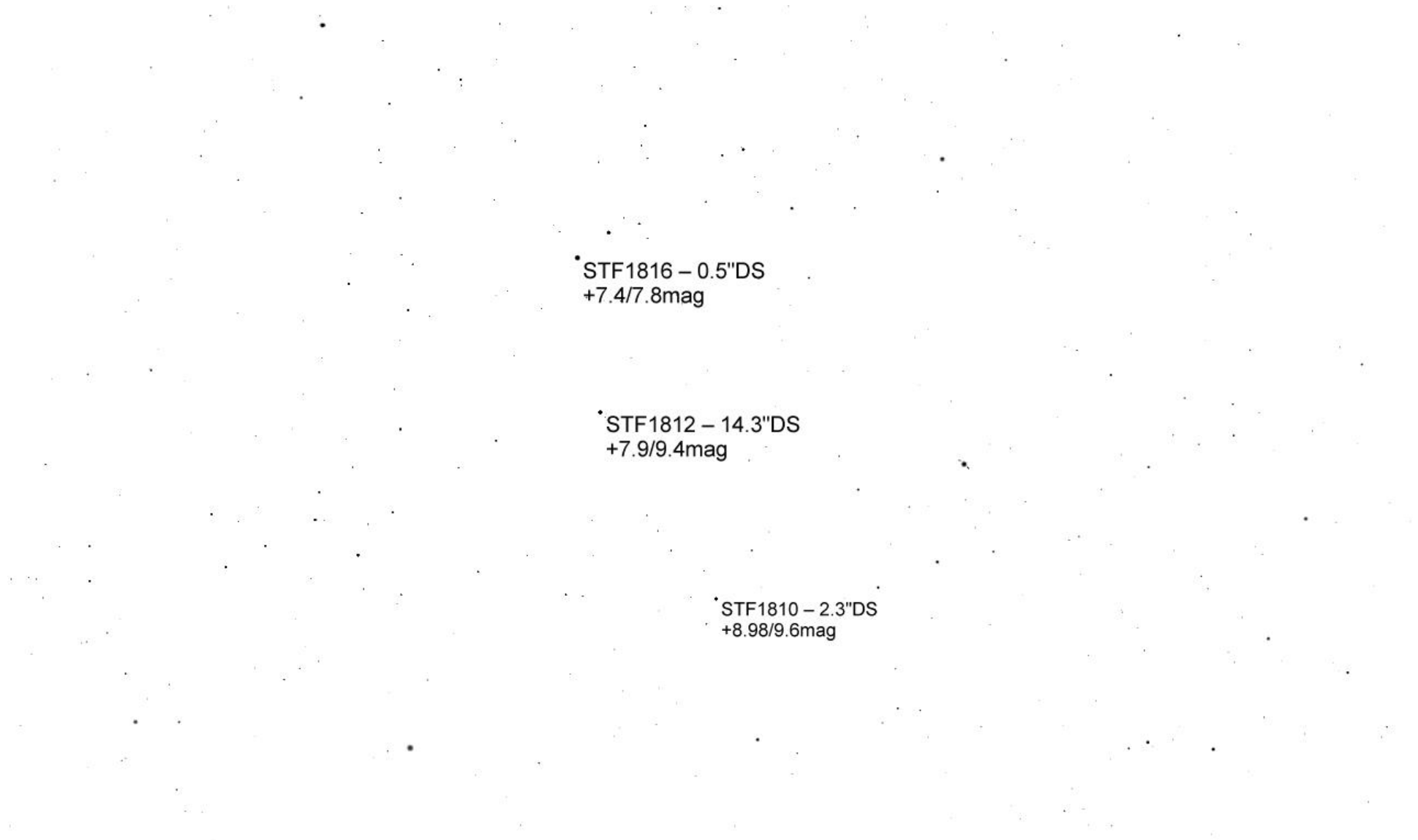
BU1441 – 3.6"DS
+10.1/11.6mag >

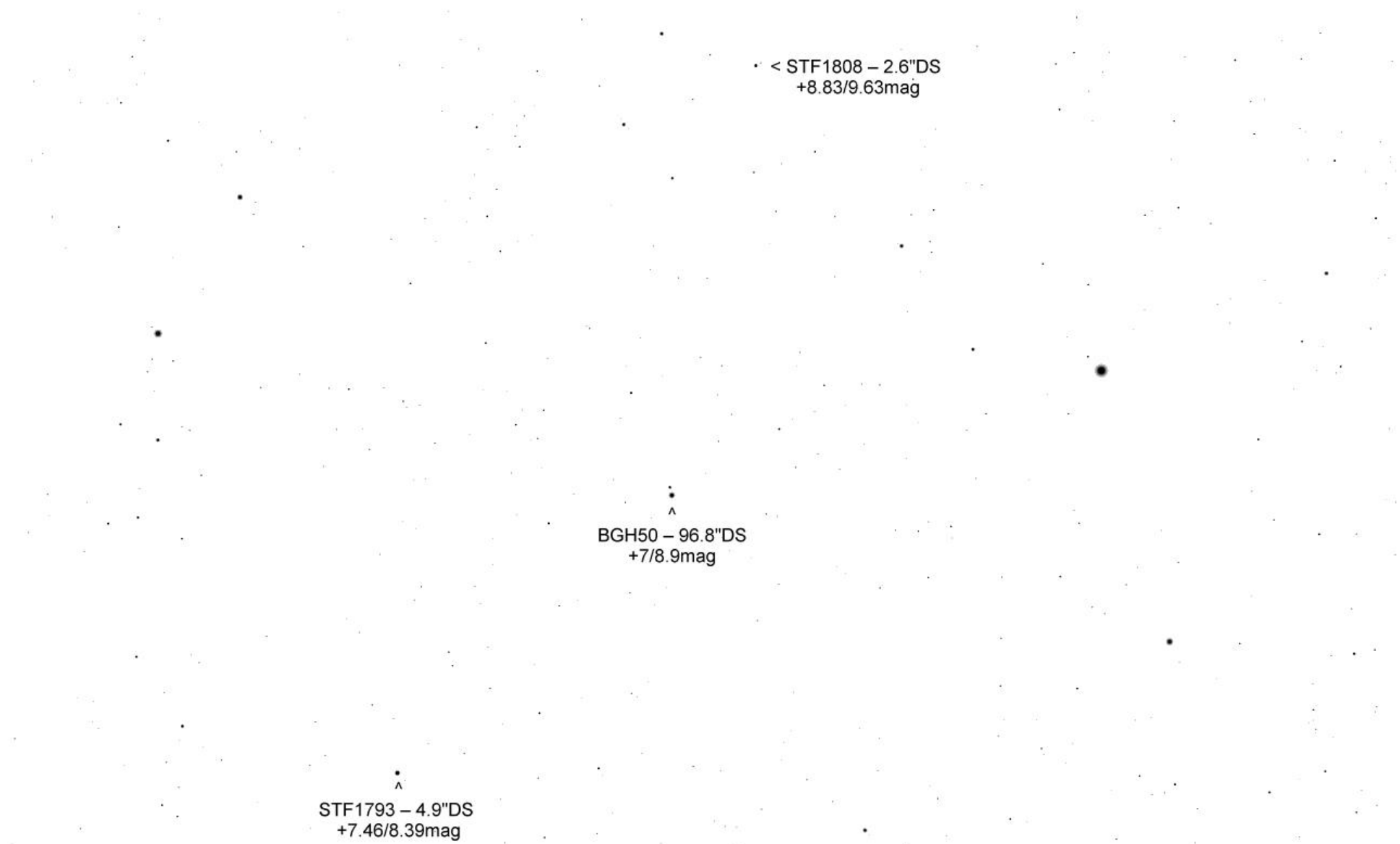
ROE74 – 7.1"DS
+10.5/10.8mag?

STF1812 – 14.3" DS
+7.9/9.4mag

STF1810 – 2.3" DS
+9/9.6mag

STF1808 – 2.6" DS
+8.8/9.6mag





• < STF1808 – 2.6"DS
+8.83/9.63mag

^
BGH50 – 96.8"DS
+7/8.9mag

^
STF1793 – 4.9"DS
+7.46/8.39mag



STF1793 – 4.9"DS
+7.5/8.4mag

<- M3

STF1785 – 3.3"DS
+7.7/8.2mag

A
A568 – 2.6"DS
+10.15/11.20mag