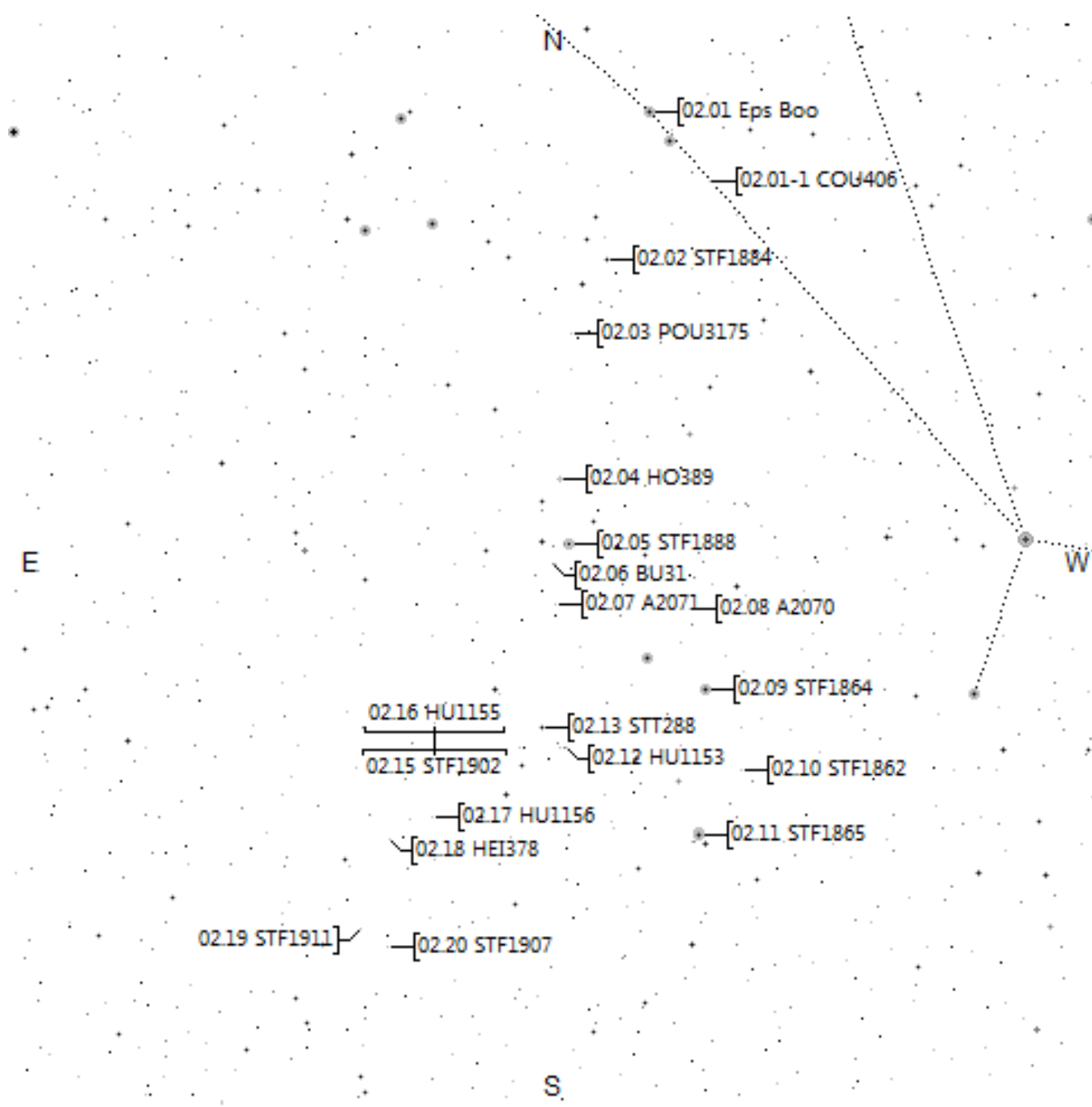
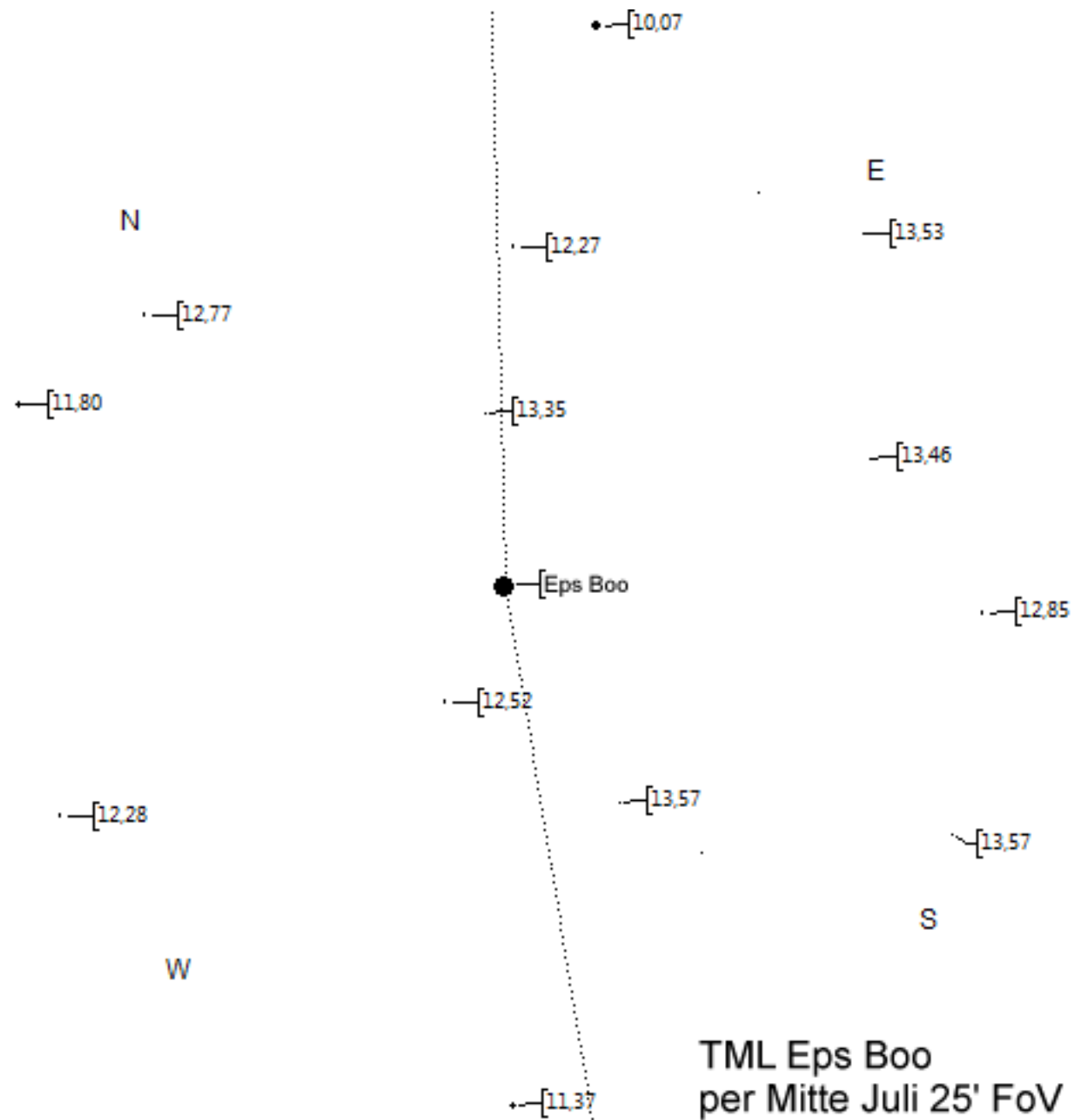
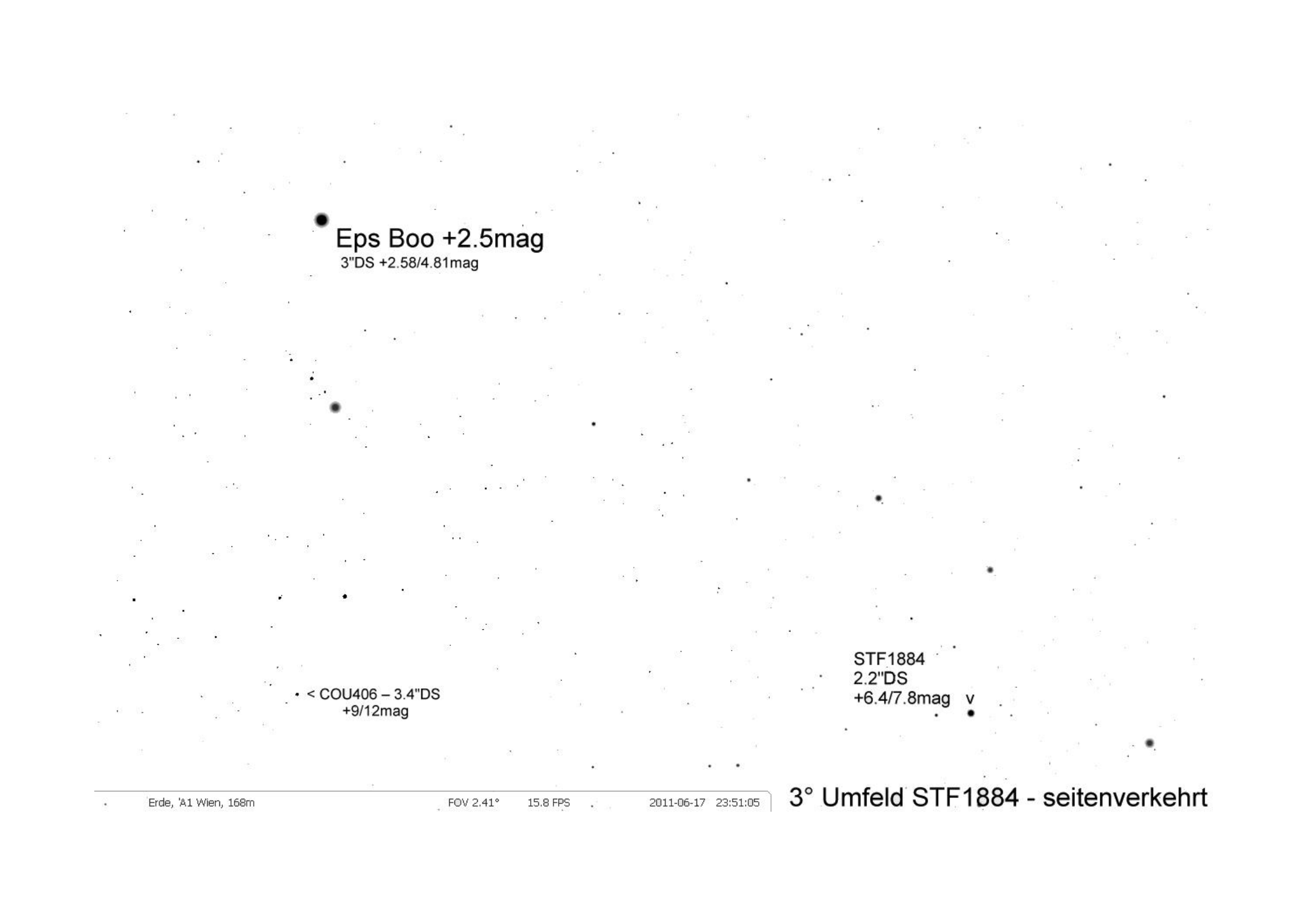


Bärenhüter



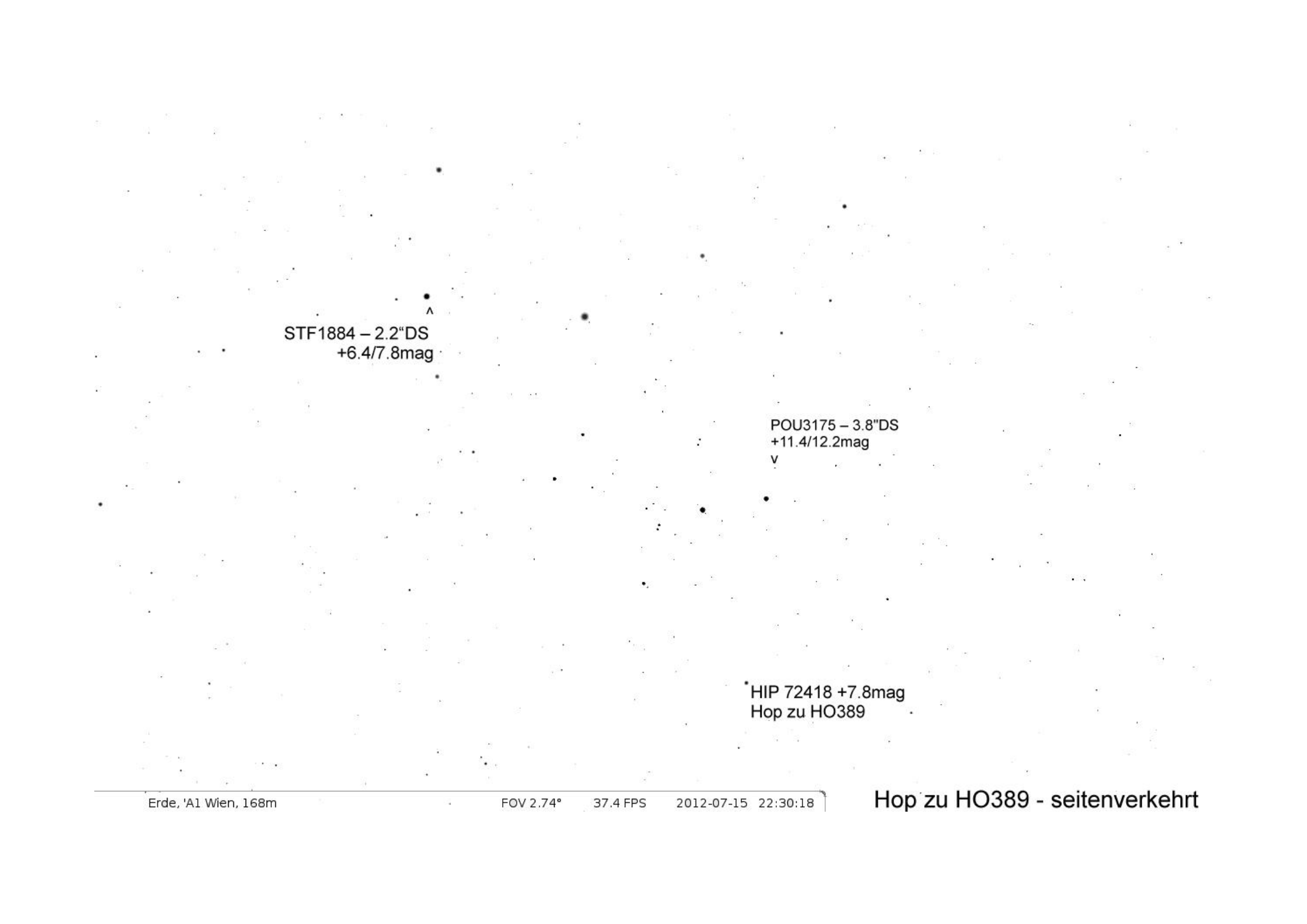


A star field image showing a dense distribution of stars. Three specific stars are highlighted with larger black dots and labeled with their names and magnitudes. The background consists of many smaller, fainter stars.

Eps Boo +2.5mag
3"DS +2.58/4.81mag

• < COU406 – 3.4"DS
+9/12mag

STF1884
2.2"DS
+6.4/7.8mag v



STF1884 – 2.2"DS
+6.4/7.8mag

POU3175 – 3.8"DS
+11.4/12.2mag
v

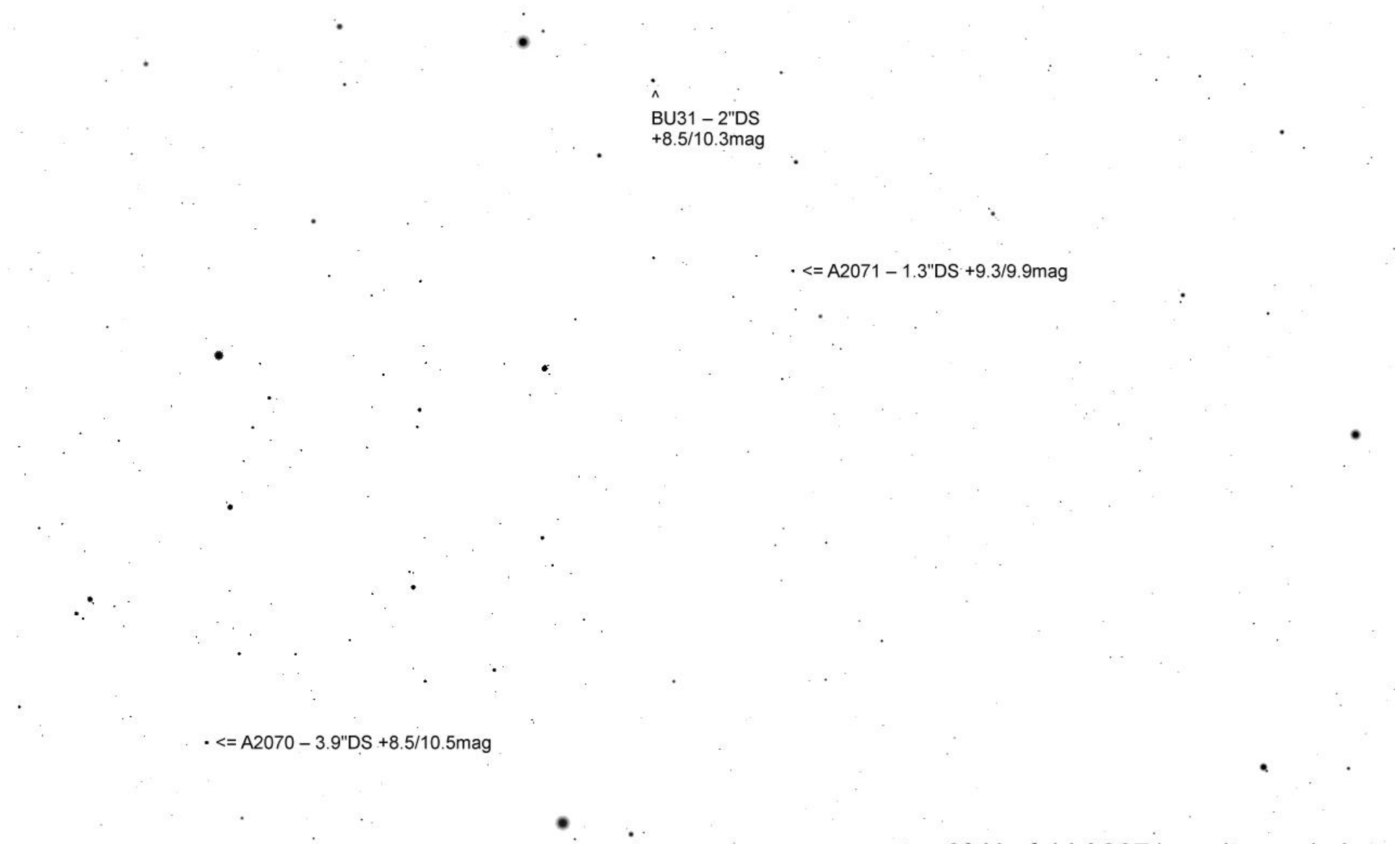
HIP 72418 +7.8mag
Hop zu HO389

HIP 72418 +7.8mag
Hop zu HO389

HO389 – 1.6"DS
+7/10.5mag

STF1888 – 6"DS
+4.8/6.9mag

BU31 – 2"DS
+8.5/10.3mag



^
BU31 – 2"DS
+8.5/10.3mag

• <= A2071 – 1.3"DS +9.3/9.9mag

• <= A2070 – 3.9"DS +8.5/10.5mag

· <= A2070 – 3.9"DS +8.5/10.5mag

STF3086 – 5.7"DS
+10.06/10.83mag
v

STF1864 – 5.4"DS
+4.9/5.8mag

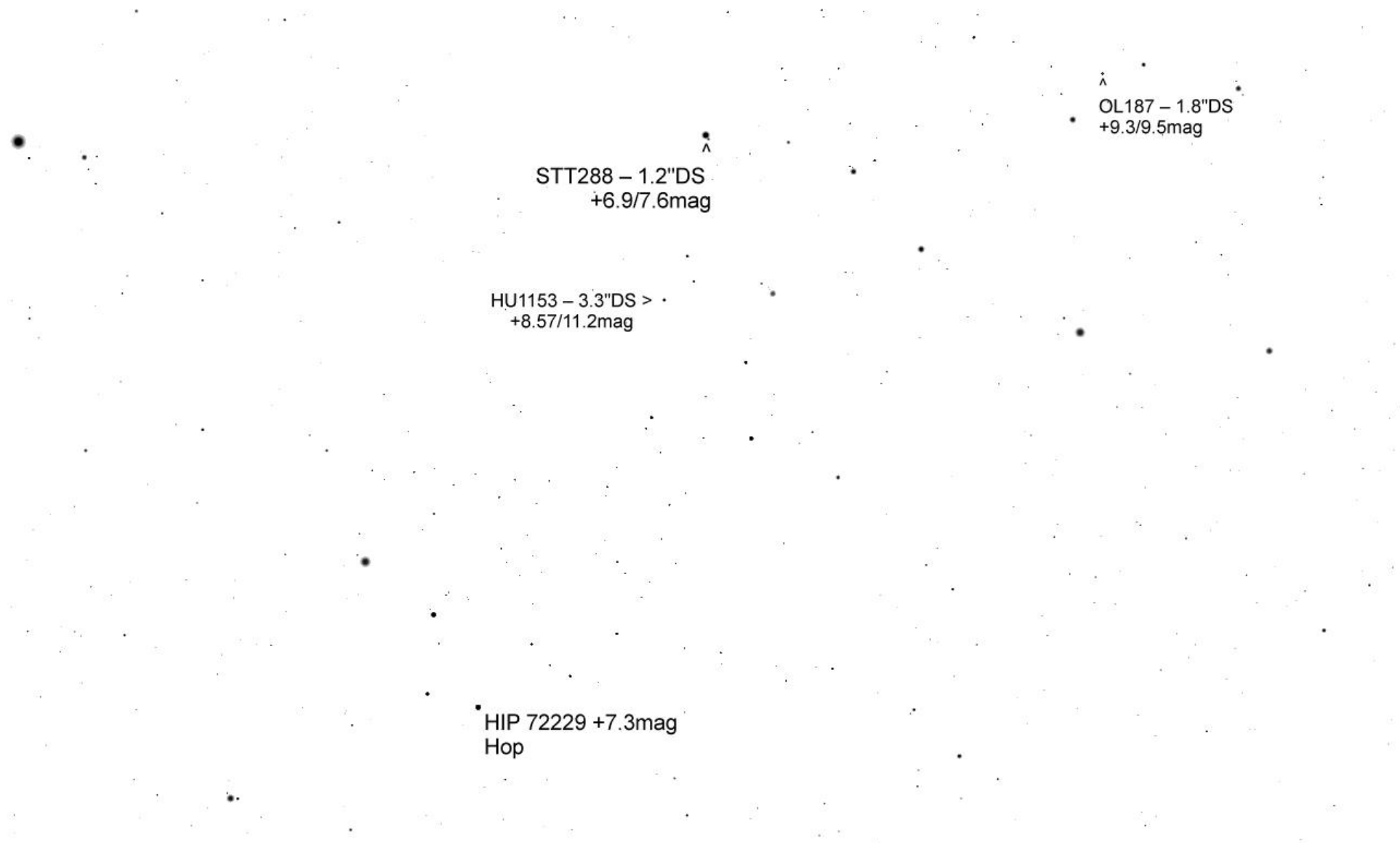
STF1862 – 14.5"DS
+9.3/10.5mag
v

STF1864 6DS
+4.9/5.8mag

HIP 72229 +7.3mag
Hop

STF1862 – 14.5"DS
+9.3/10.5mag
v

STF1865 0.7"DS +4.5/4.6mag

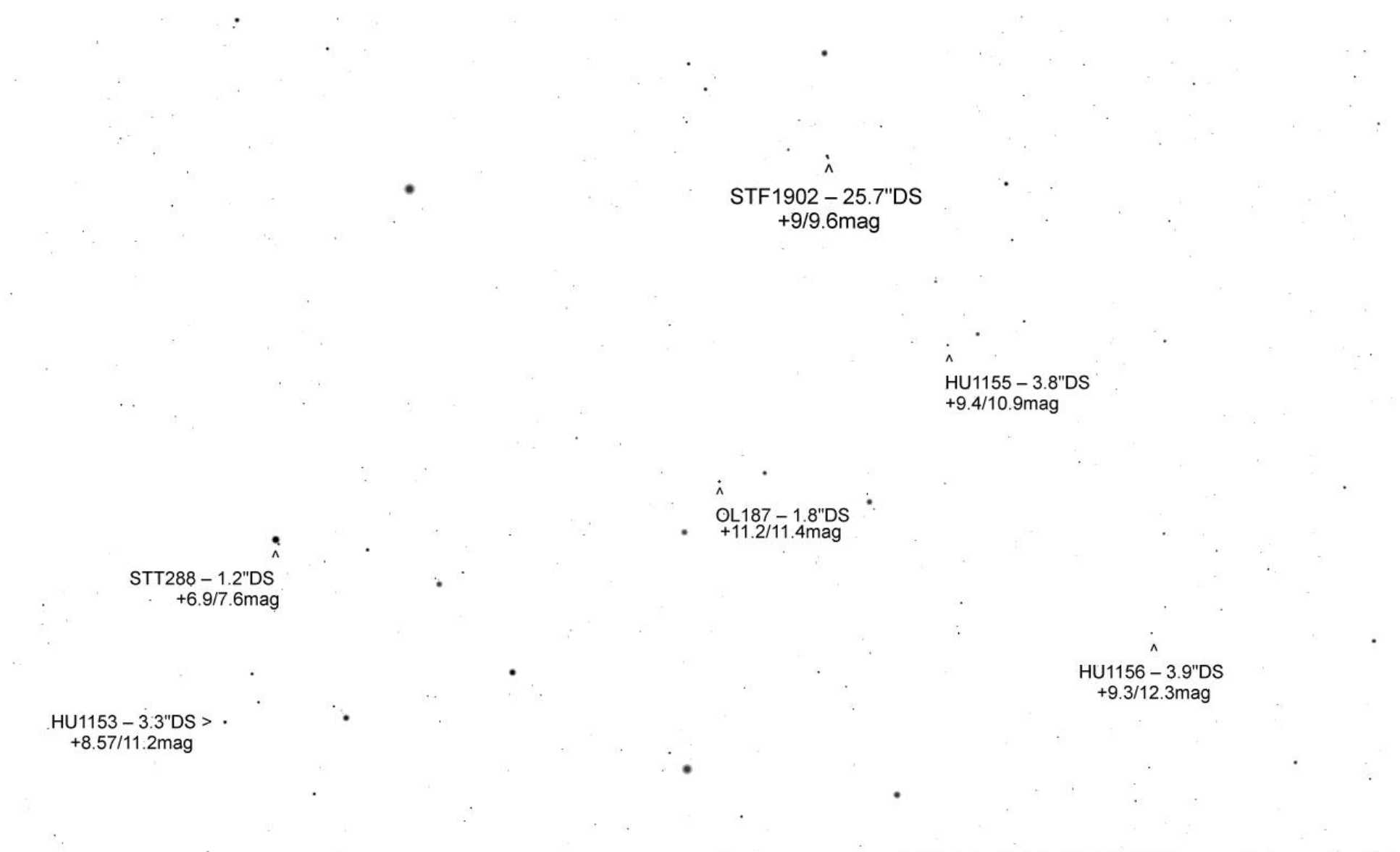


STT288 – 1.2"DS
+6.9/7.6mag

HU1153 – 3.3"DS >
+8.57/11.2mag

HIP 72229 +7.3mag
Hop

OL187 – 1.8"DS
+9.3/9.5mag





^
HU1156 – 3.9"DS
+9.3/12.3mag

^
HEI378 – 1.5"DS
+9.64/10.76mag

^
STF1911 – 2"DS +10.04/10.41mag

< STF1907 – 0.9"DS +9.13/9.13mag