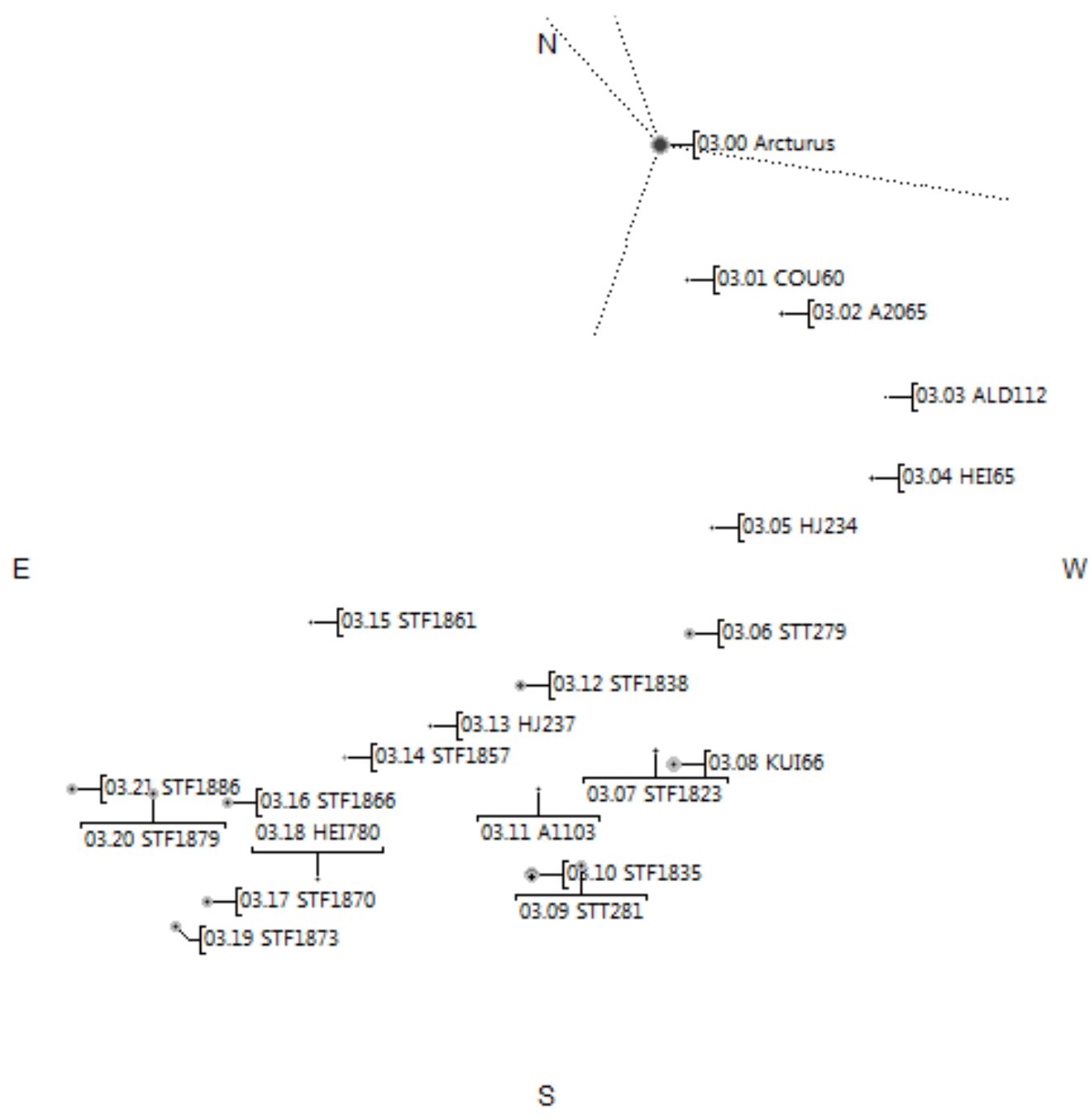
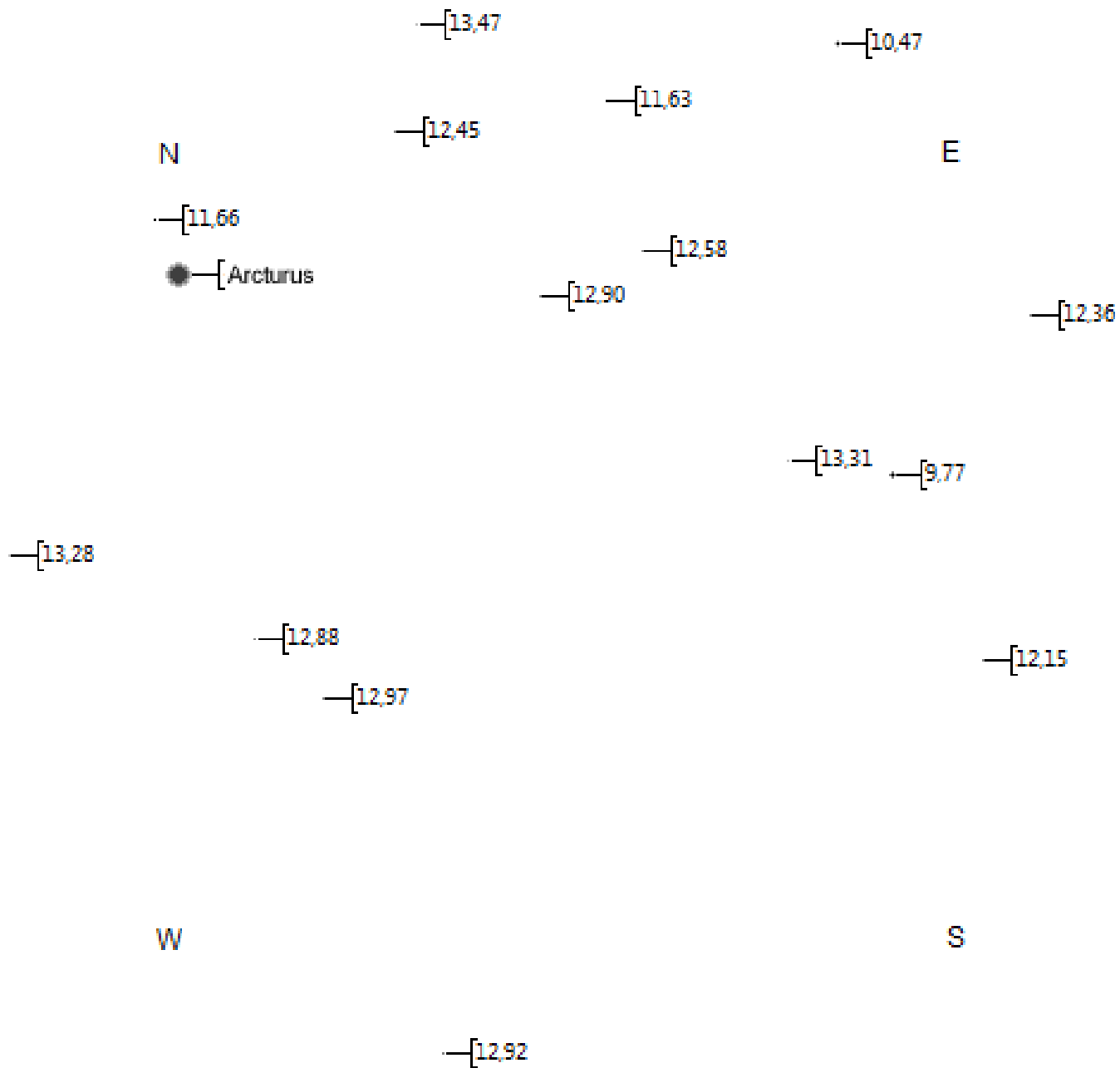
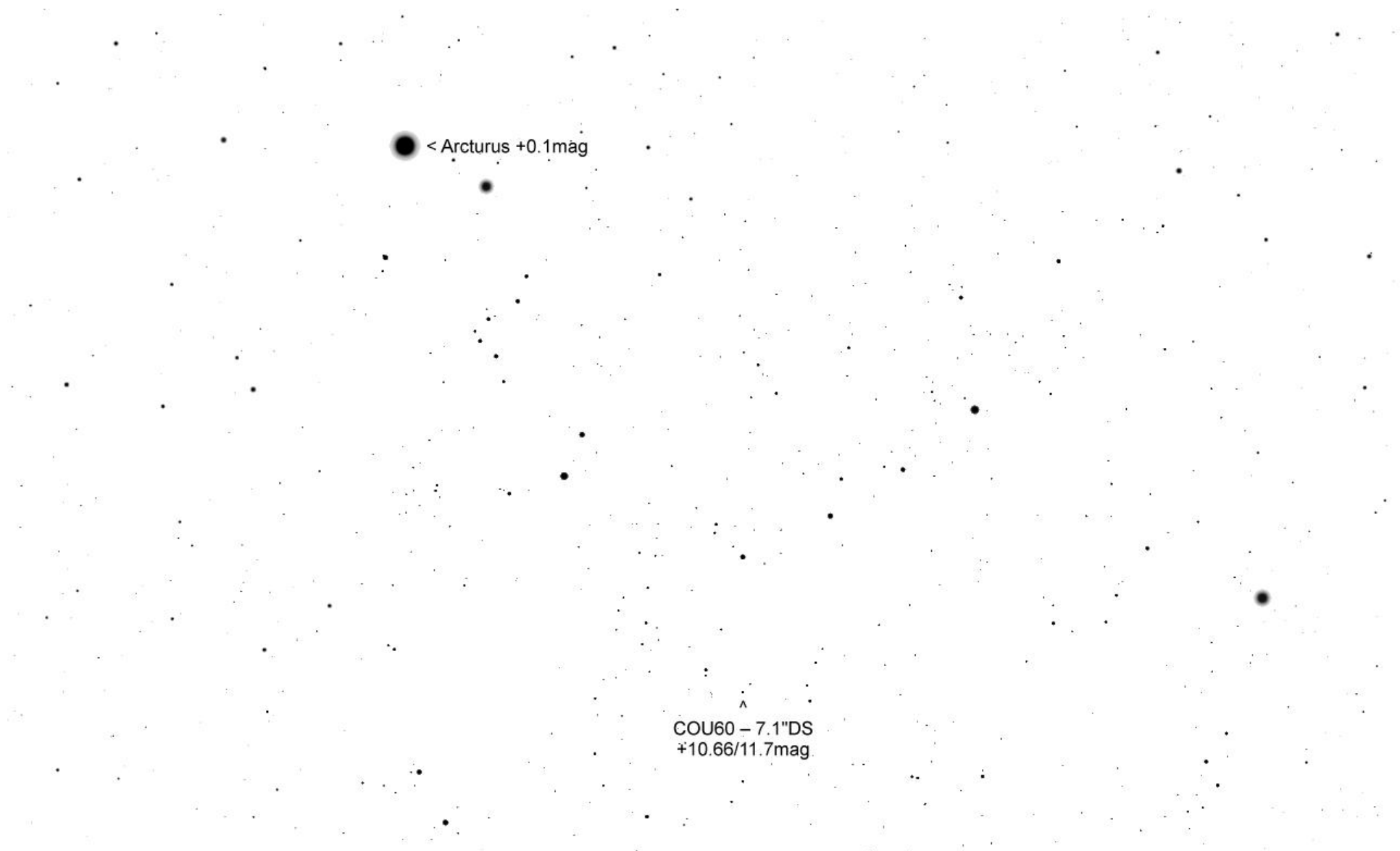


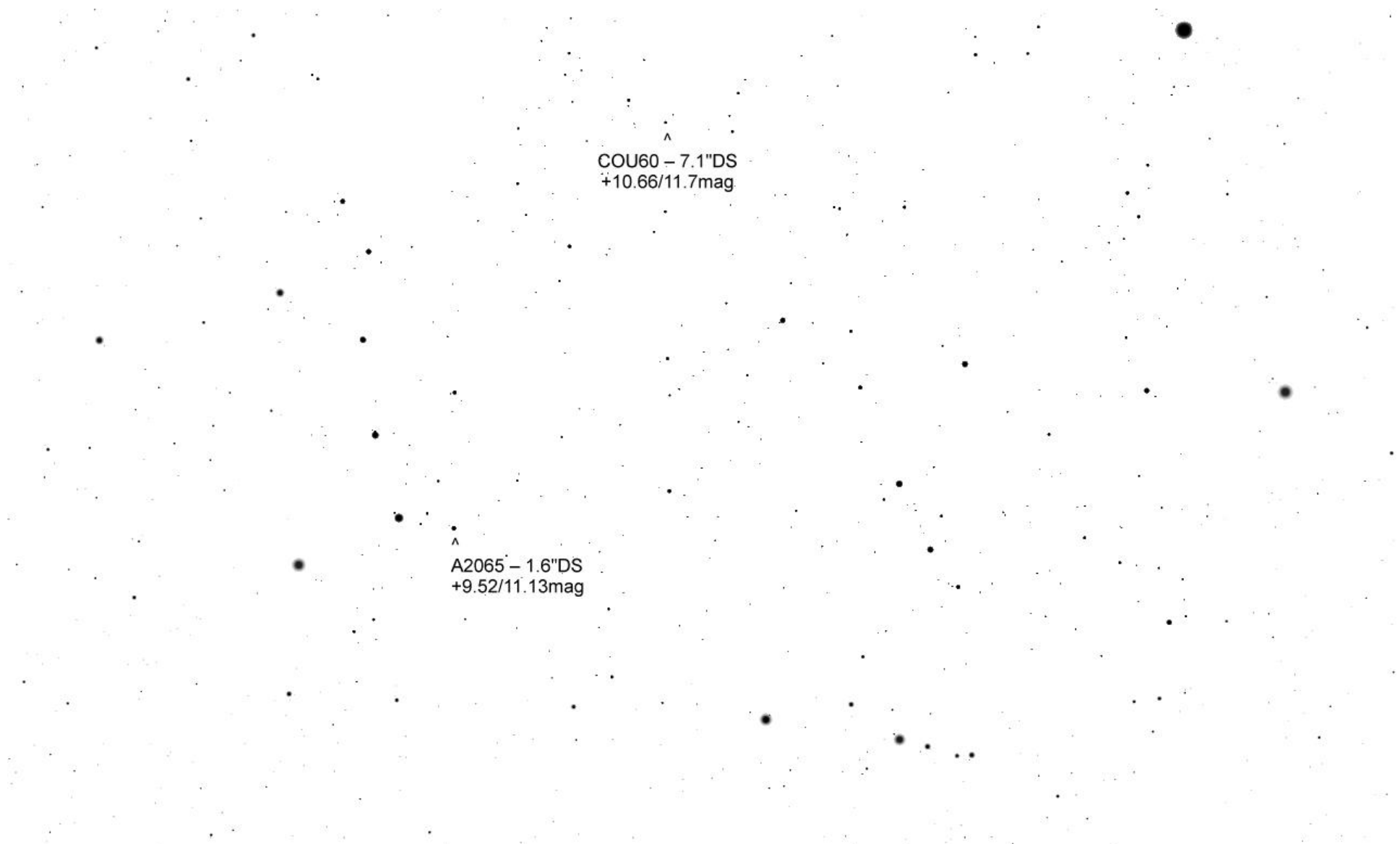
# Bärenhüter





TML Arcturus per Mitte Juli 15' FoV





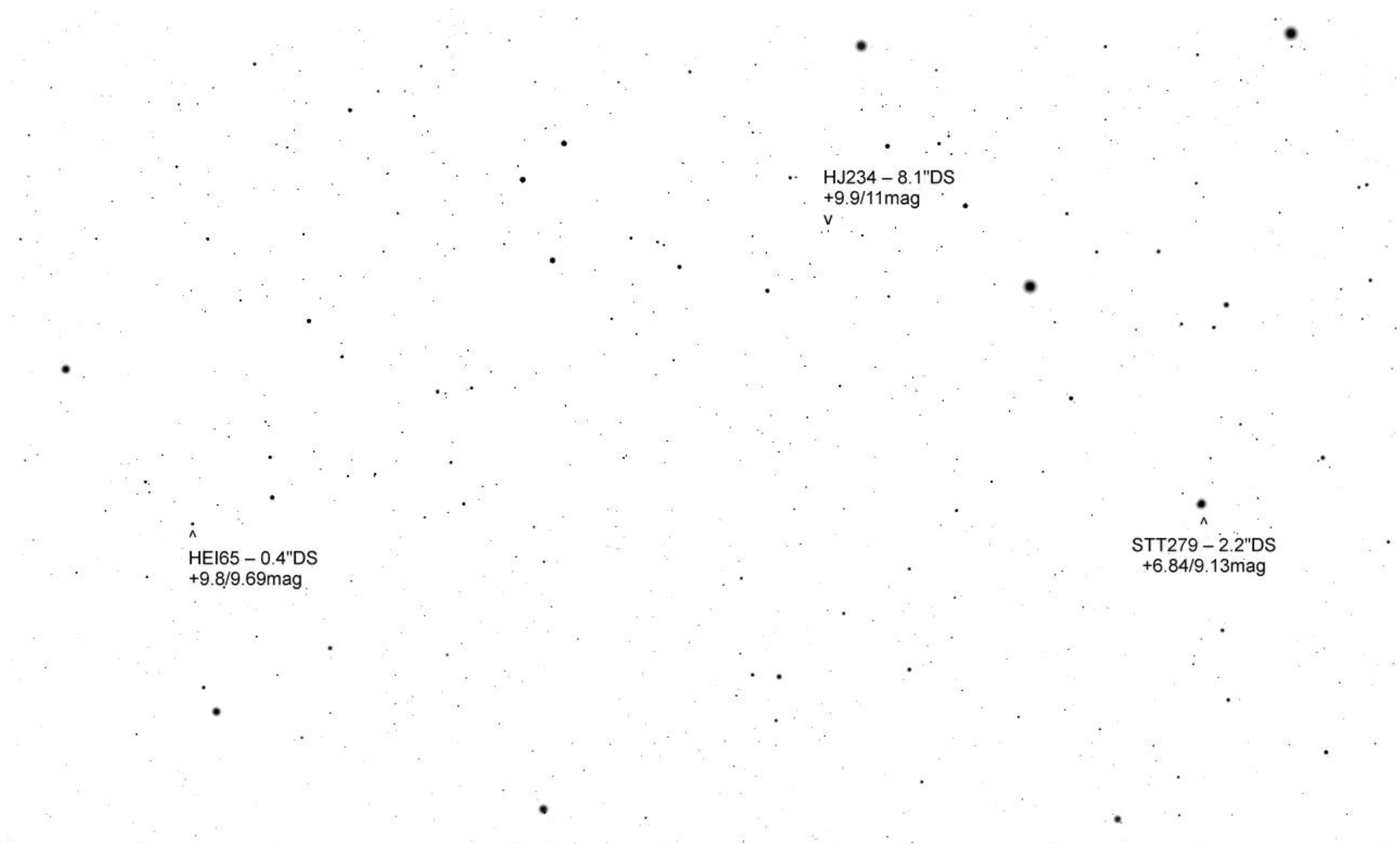
^  
COU60 – 7.1"DS  
+10.66/11.7mag

^  
A2065 – 1.6"DS  
+9.52/11.13mag

^  
A2065 - 1.6"DS  
+9.52/11.13mag

^  
ALD112 - 1.7"DS  
+11.39/11.52mag

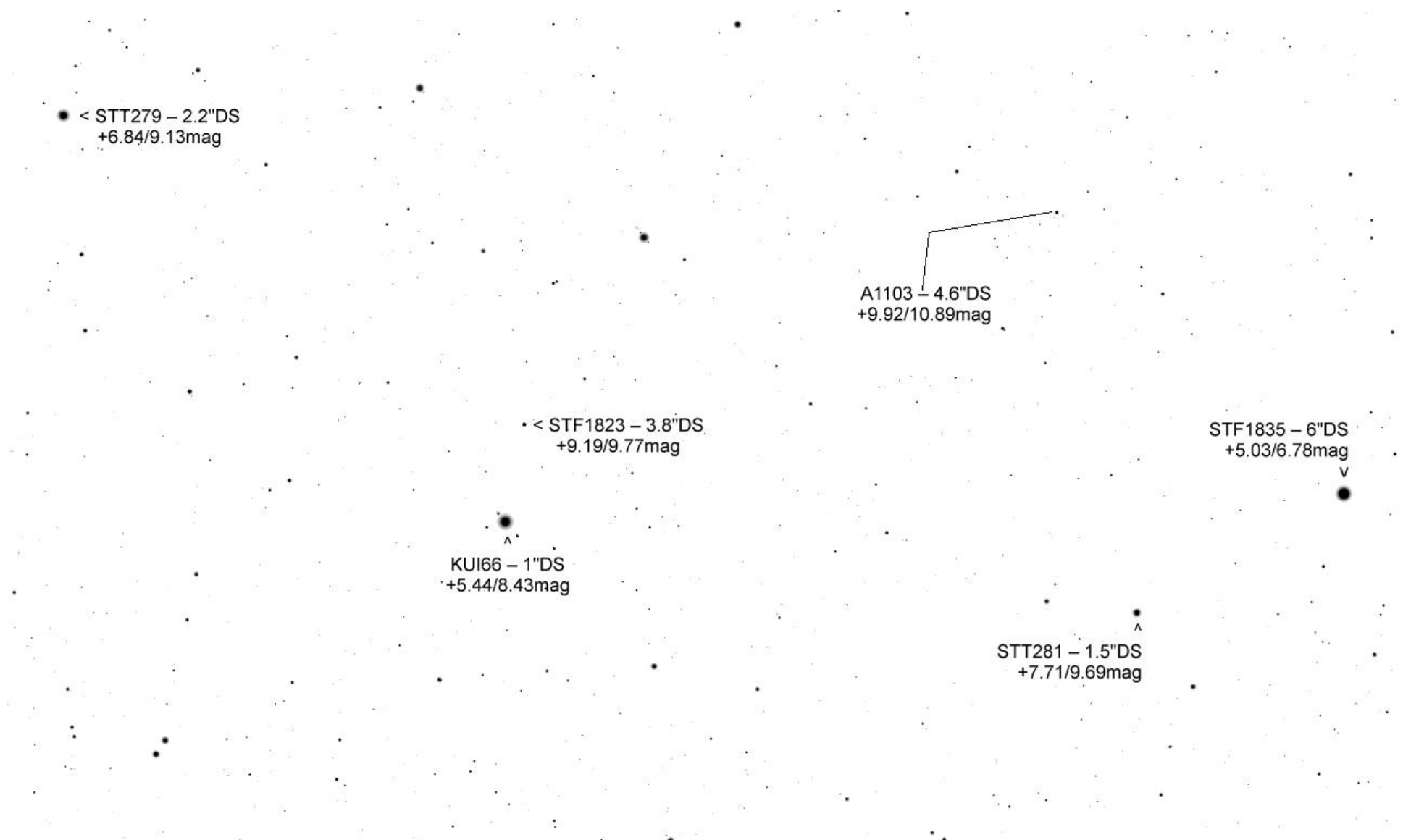
• < HE165 - 0.4"DS +9.8/9.69mag



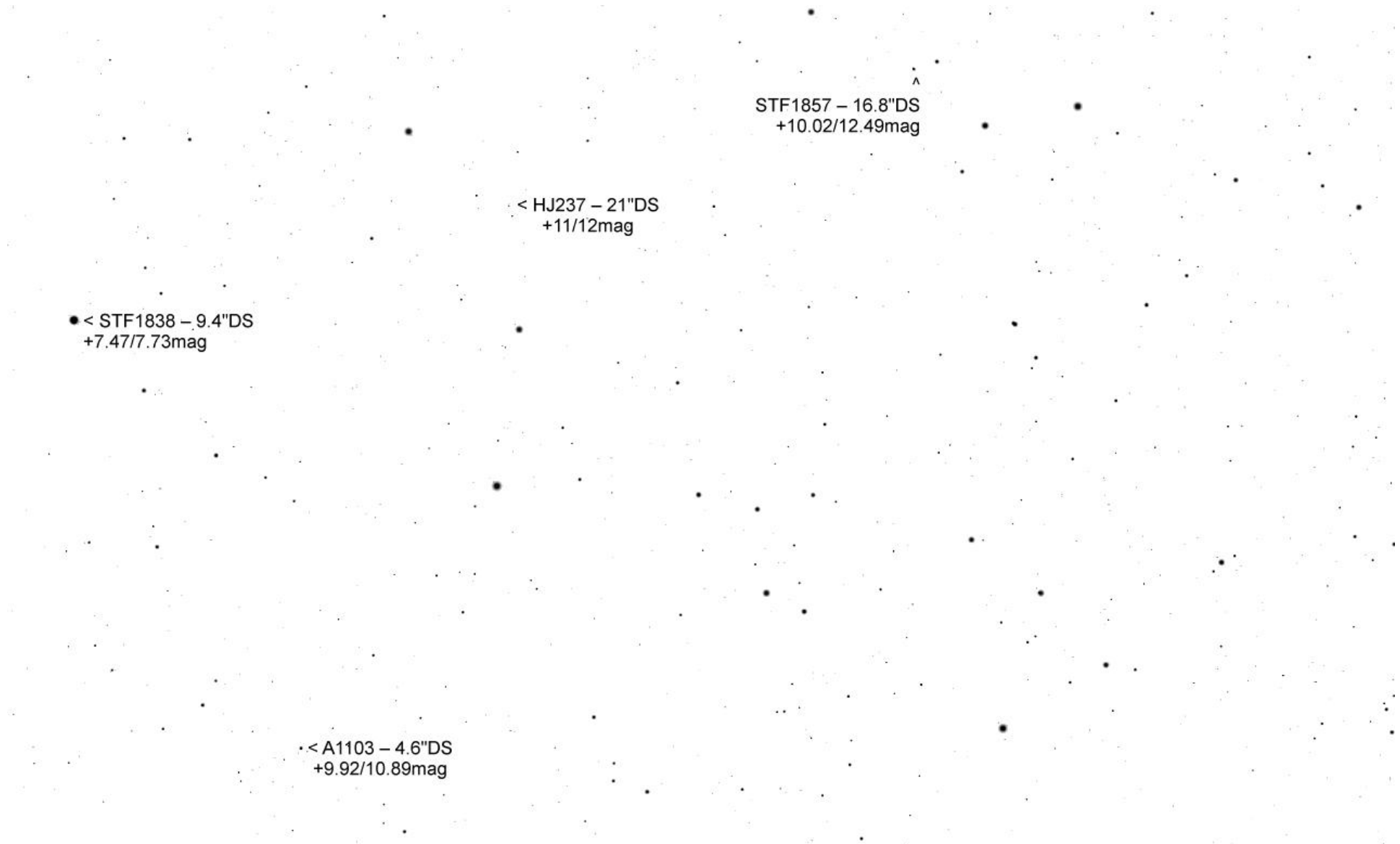
▲  
HEI65 – 0.4"DS  
+9.8/9.69mag

HJ234 – 8.1"DS  
+9.9/11mag  
V

▲  
STT279 – 2.2"DS  
+6.84/9.13mag







• < STF1861 – 14.2"DS.+9.73/10.28mag

STF1866 – 0.7"DS  
+8.48/8.65mag

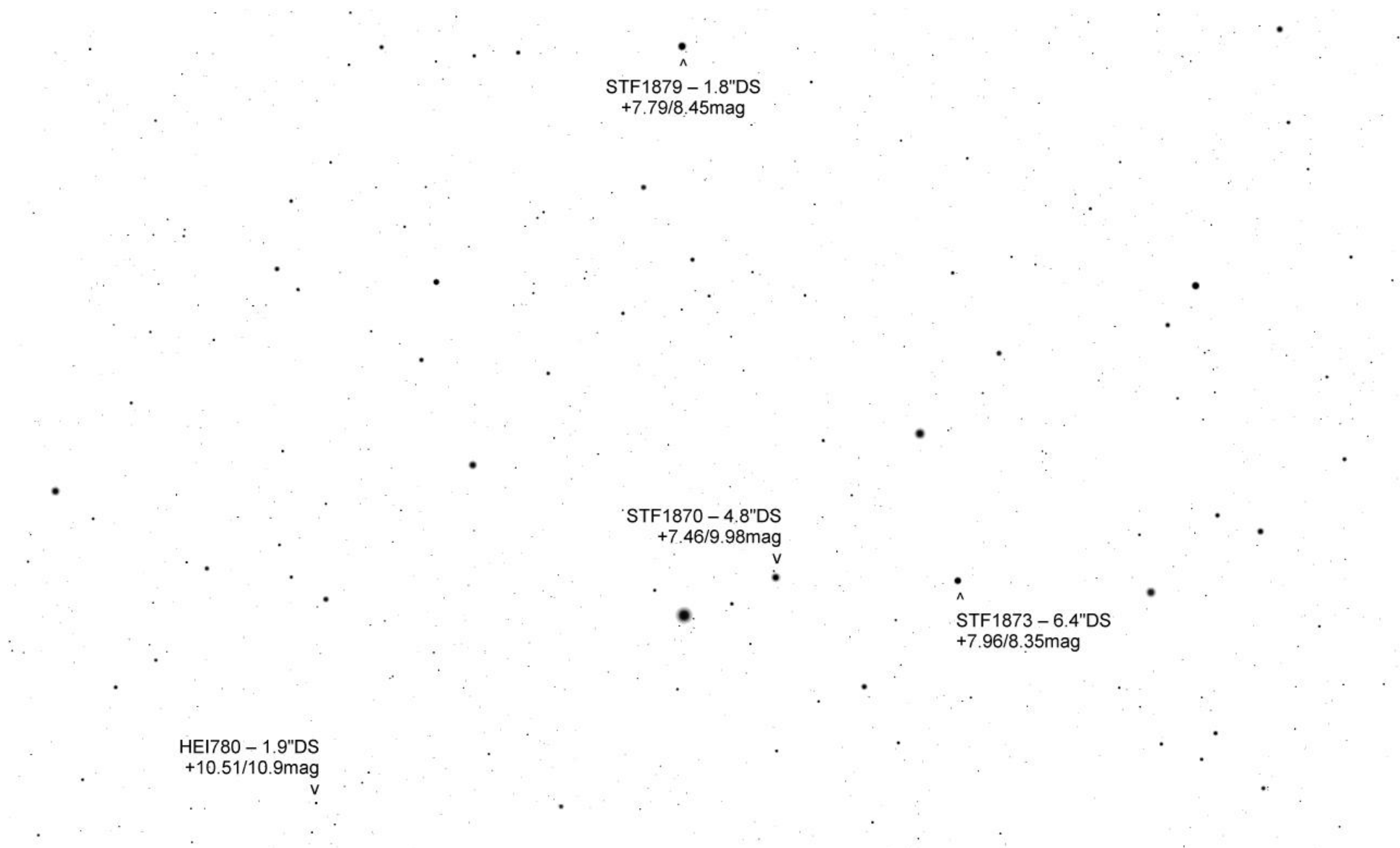
v

STF1857 – 16.8"DS  
+10.02/12.49mag

^

STF1870 – 4.8"DS  
+7.46/9.98mag

v



^  
STF1879 – 1.8"DS  
+7.79/8.45mag

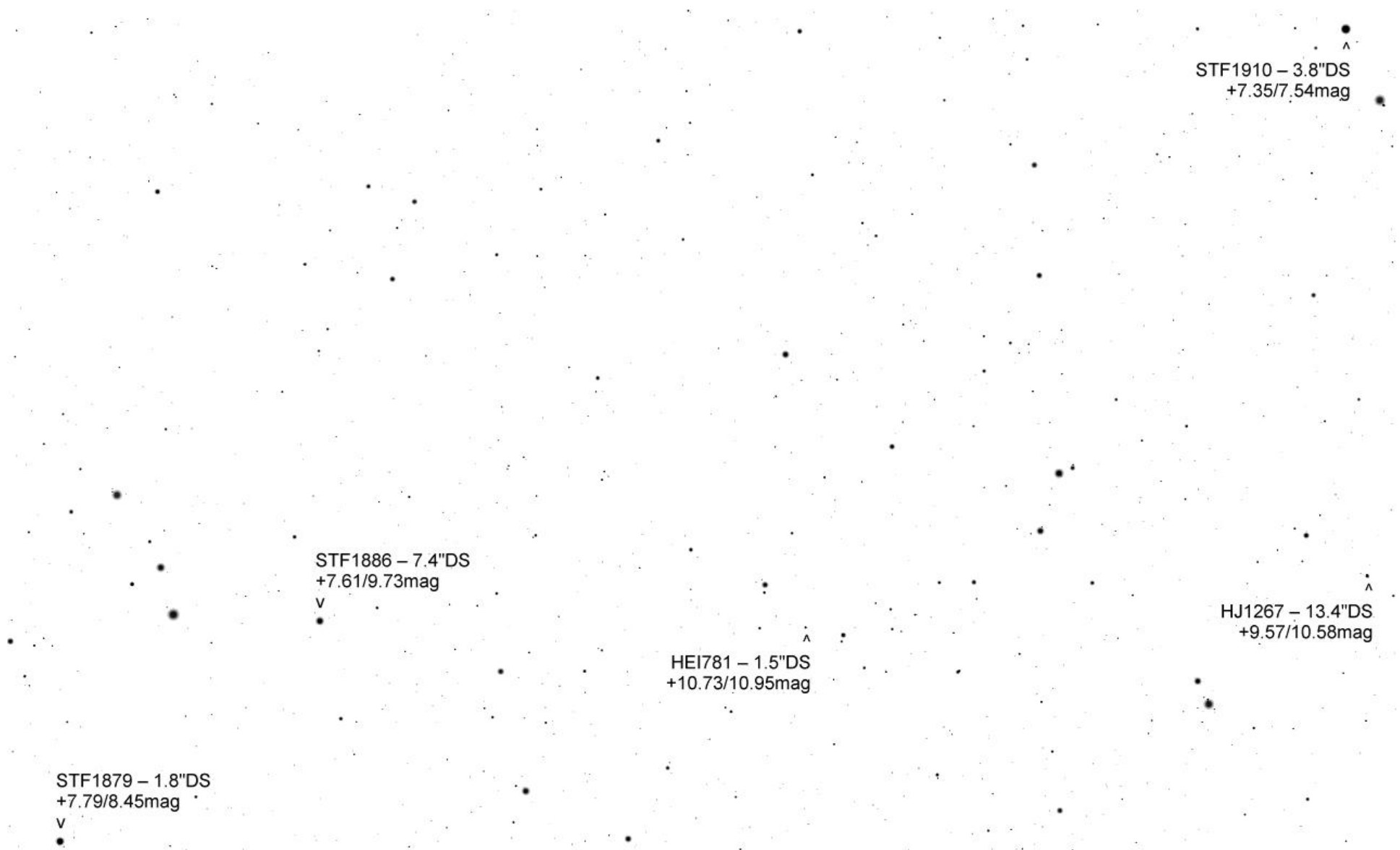
STF1870 – 4.8"DS  
+7.46/9.98mag

v

^  
STF1873 – 6.4"DS  
+7.96/8.35mag

HEI780 – 1.9"DS  
+10.51/10.9mag

v



Erde, 'A1 Wien, 168m

FOV 3.01°

61.8 FPS

2014-07-15 23:30:04

3° Umfeld STF1886 – seitenverkehrt