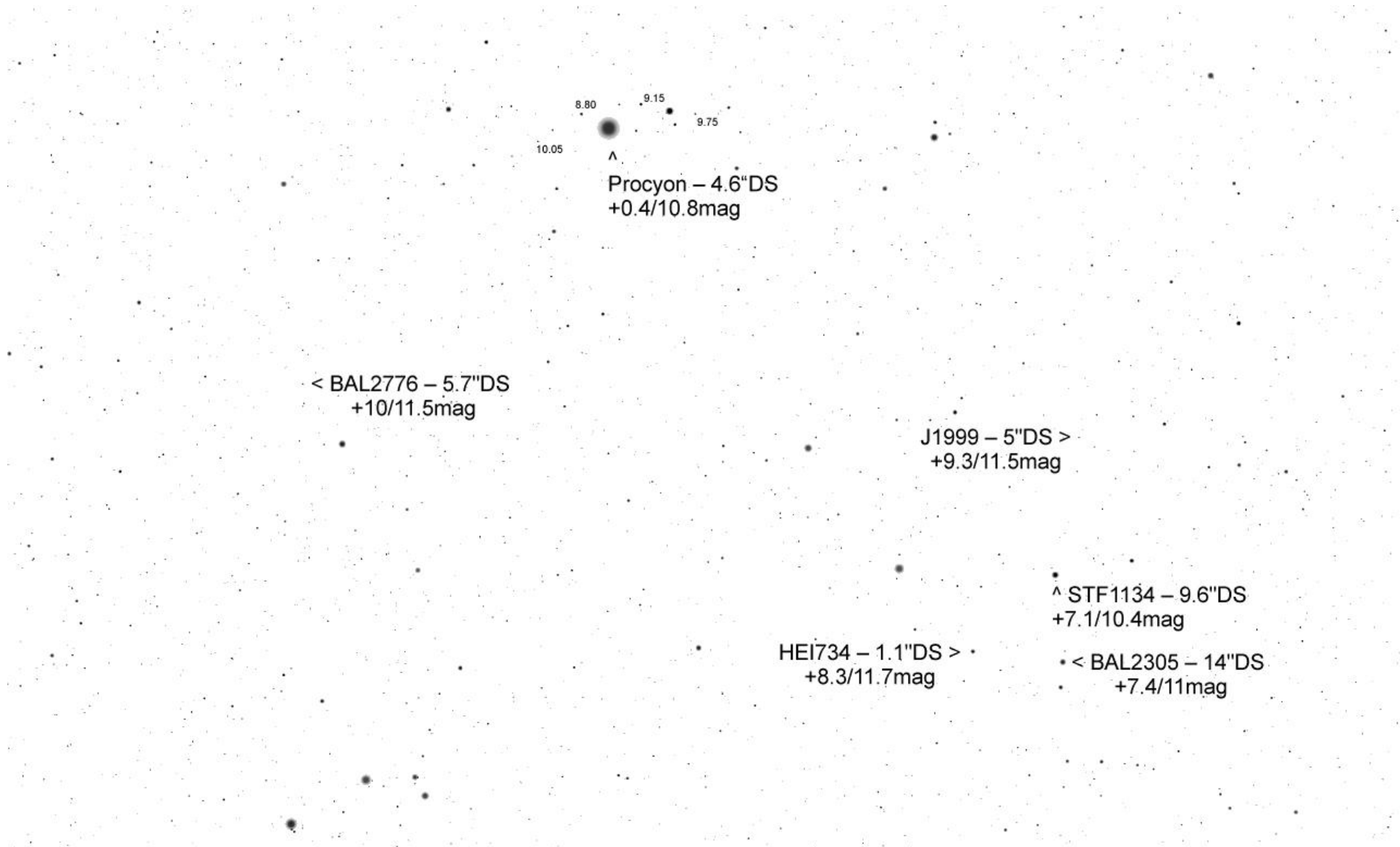


TML Procyon 0.5° per Mitte März



8.80 9.15 9.75

10.05

^

Procyon – 4.6"DS  
+0.4/10.8mag

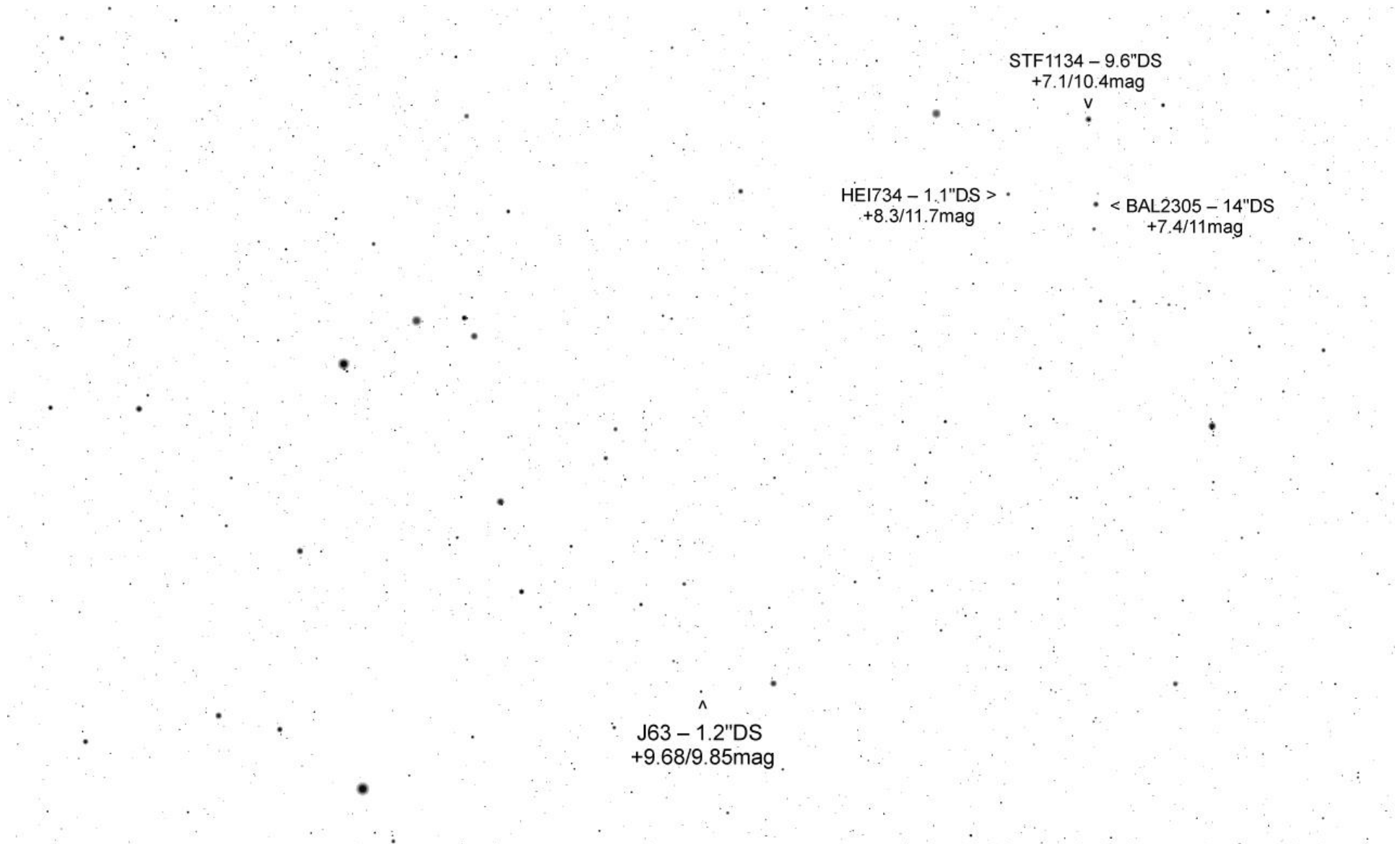
< BAL2776 – 5.7"DS  
+10/11.5mag

J1999 – 5"DS >  
+9.3/11.5mag

HEI734 – 1.1"DS >  
+8.3/11.7mag

^ STF1134 – 9.6"DS  
+7.1/10.4mag

• < BAL2305 – 14"DS  
• +7.4/11mag



STF1134 – 9.6"DS  
+7.1/10.4mag

v

HEI734 – 1.1"DS >  
+8.3/11.7mag

< BAL2305 – 14"DS  
+7.4/11mag

^  
J63 – 1.2"DS  
+9.68/9.85mag

^  
J63 – 1.2"DS  
+9.68/9.85mag

^  
AG143 – 5.8"DS  
+9.1/10.1mag

^  
A2531 – 1.4"DS  
+8.2/10.3mag

• < STT176 – 1.6"DS  
+7.2/92.mag

• < HJ762 – 11.2"DS  
+9.15/9.6mag

• < A2879 – 1.1"DS  
+7.4/11.4mag

AG143 – 5.8"DS  
+9.1/10.1mag  
v

^  
A2531 – 1.4"DS  
+8.2/10.3mag

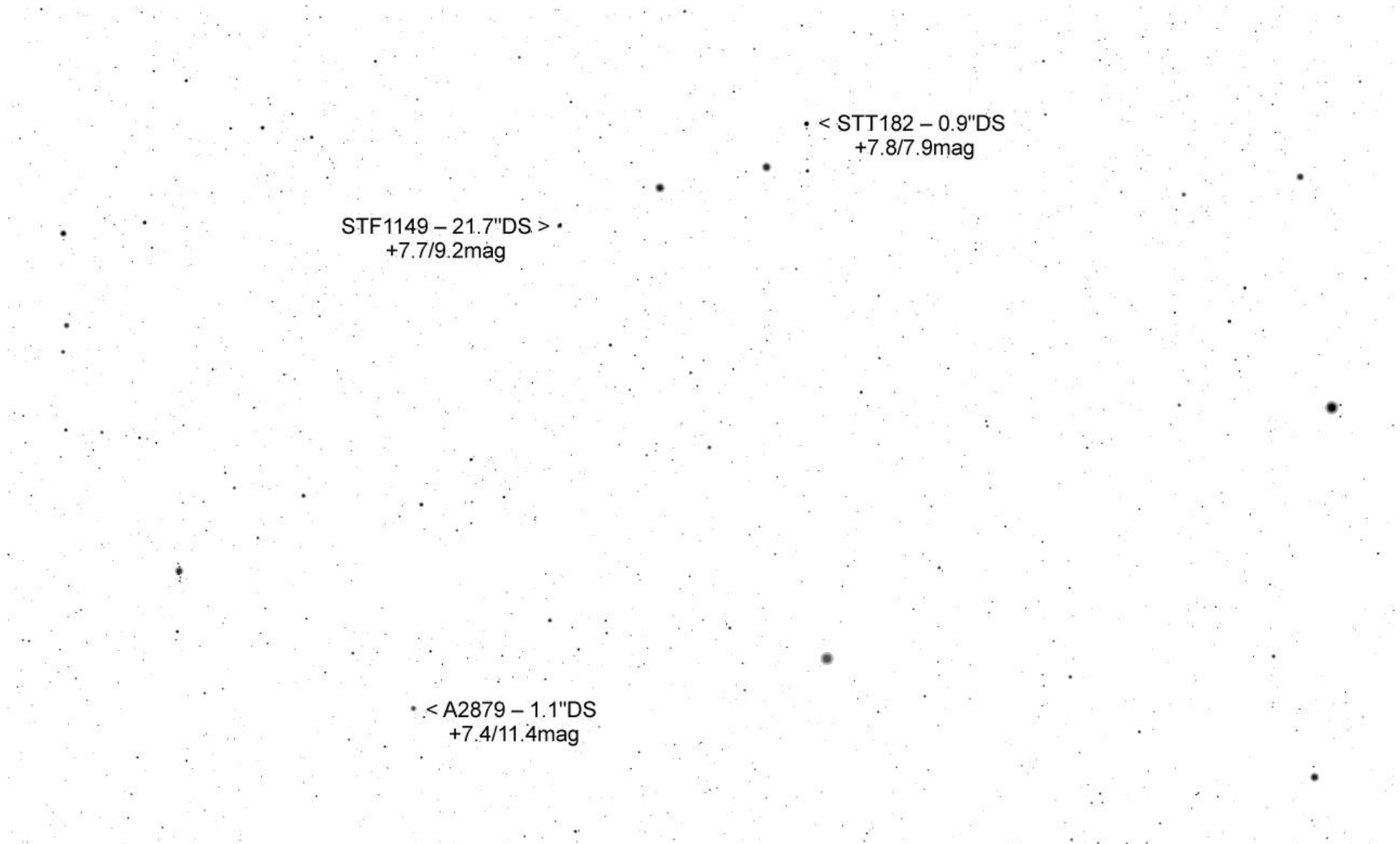
STT176 – 1.6"DS > •  
+7.2/92.mag

A2534 – 0.8"DS  
+6.44/8.47mag  
v

^  
STF1141 – 17.8"DS  
+8.4/9.4mag

HJ2410 – 17.1"DS > •  
+9.8/11.2mag

• < HJ762 – 11.2"DS +9.15/9.6mag



• STF1149 – 21.7"DS > •  
+7.7/9.2mag

• < STT182 – 0.9"DS  
+7.8/7.9mag

• < A2879 – 1.1"DS  
+7.4/11.4mag