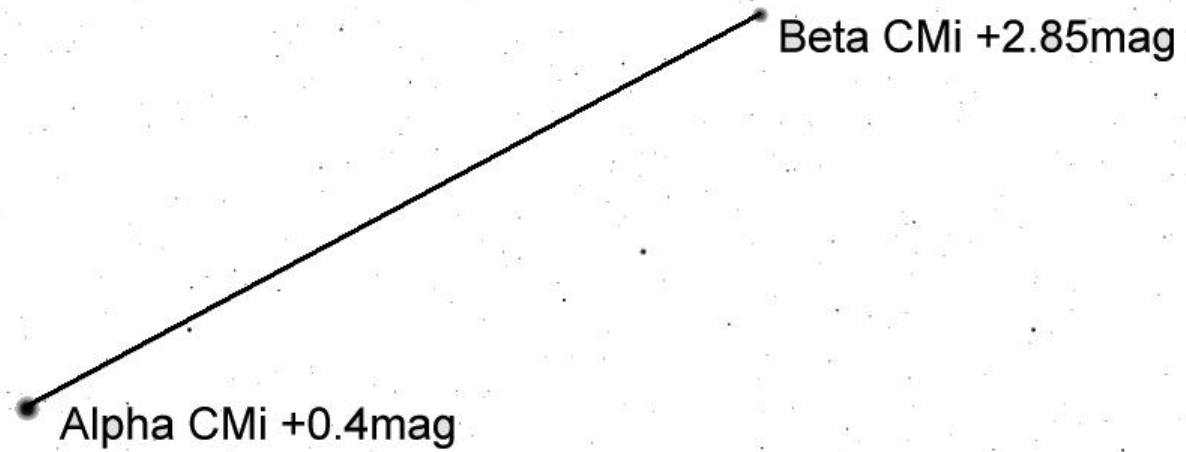
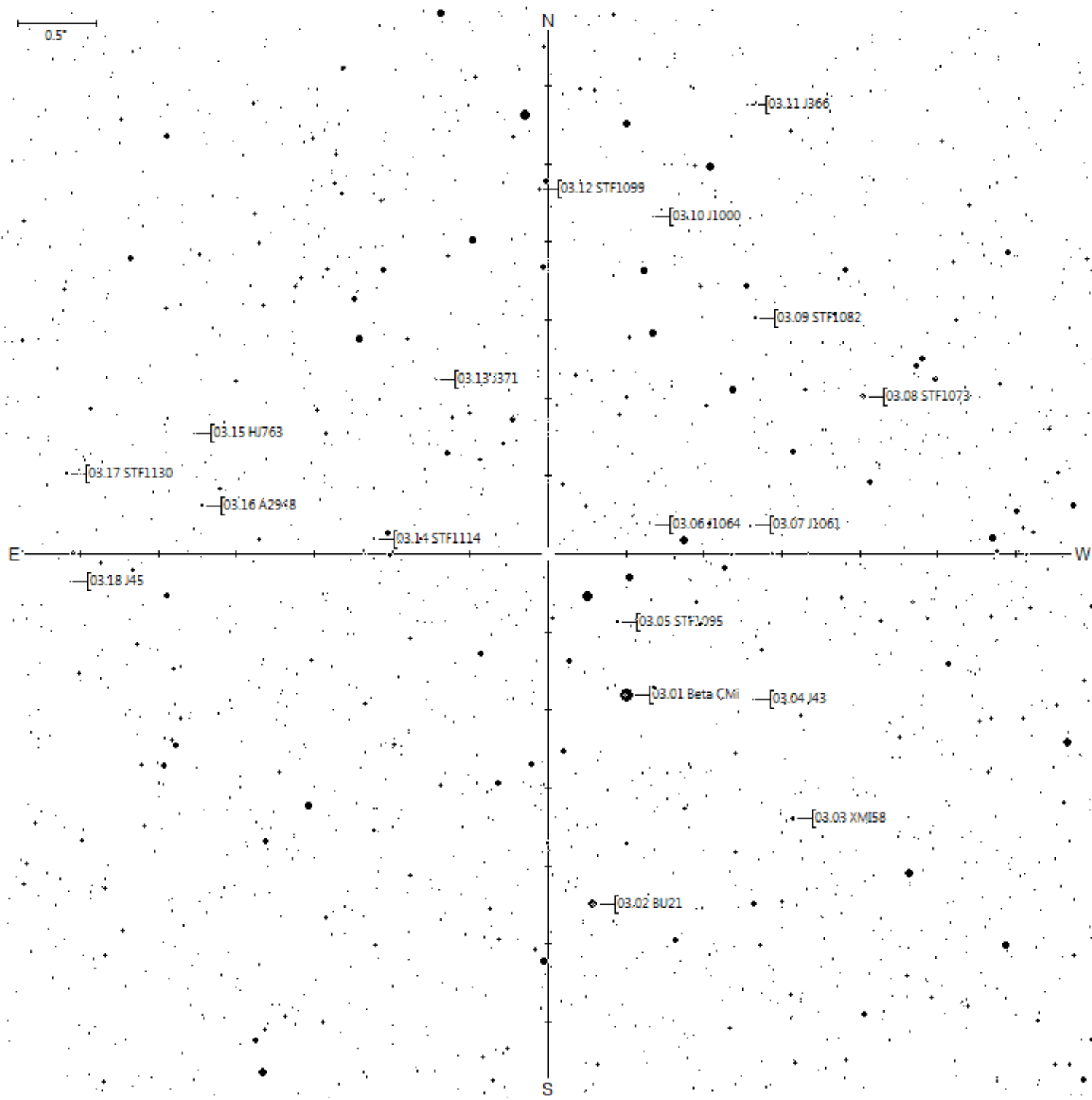
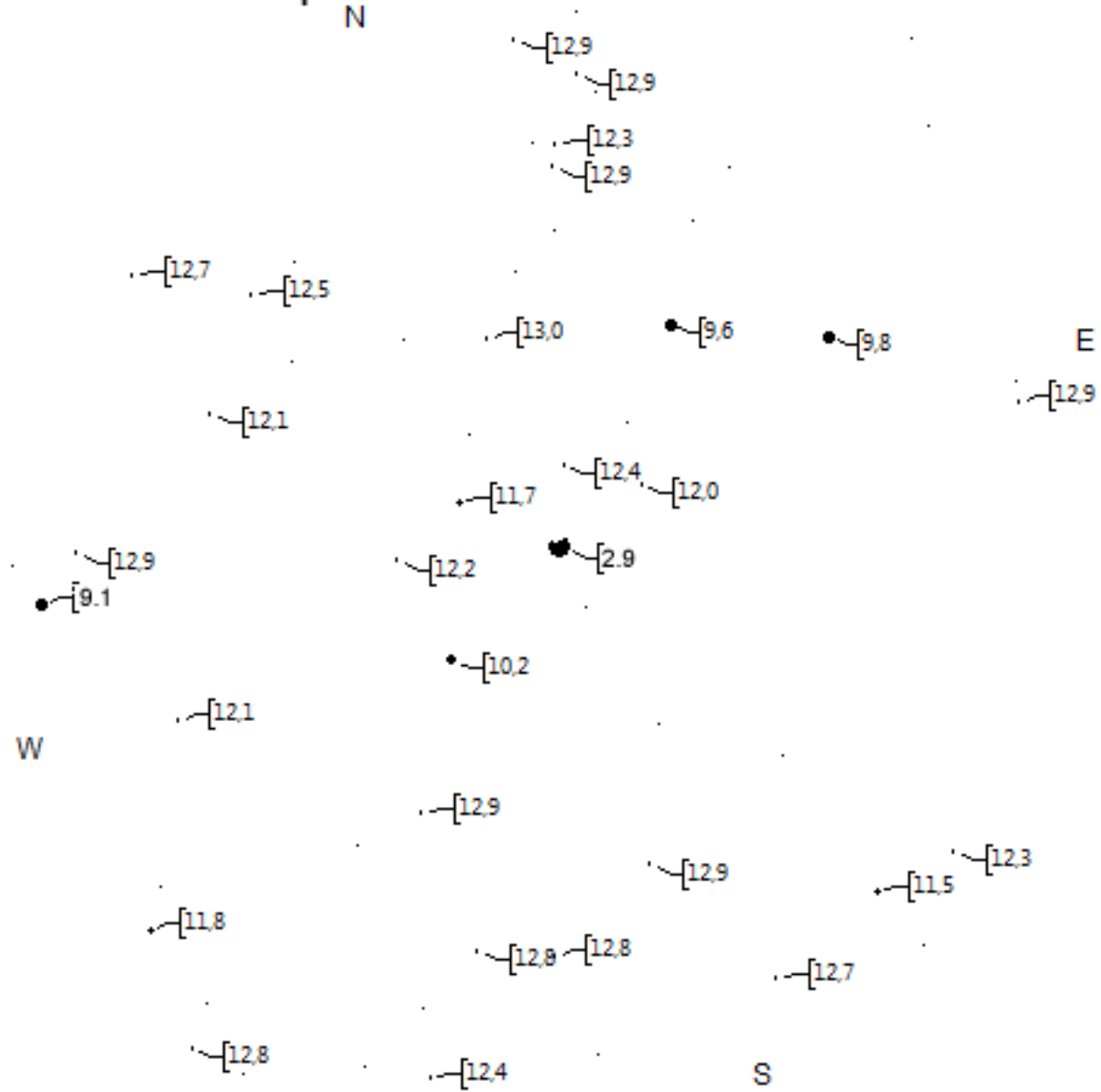


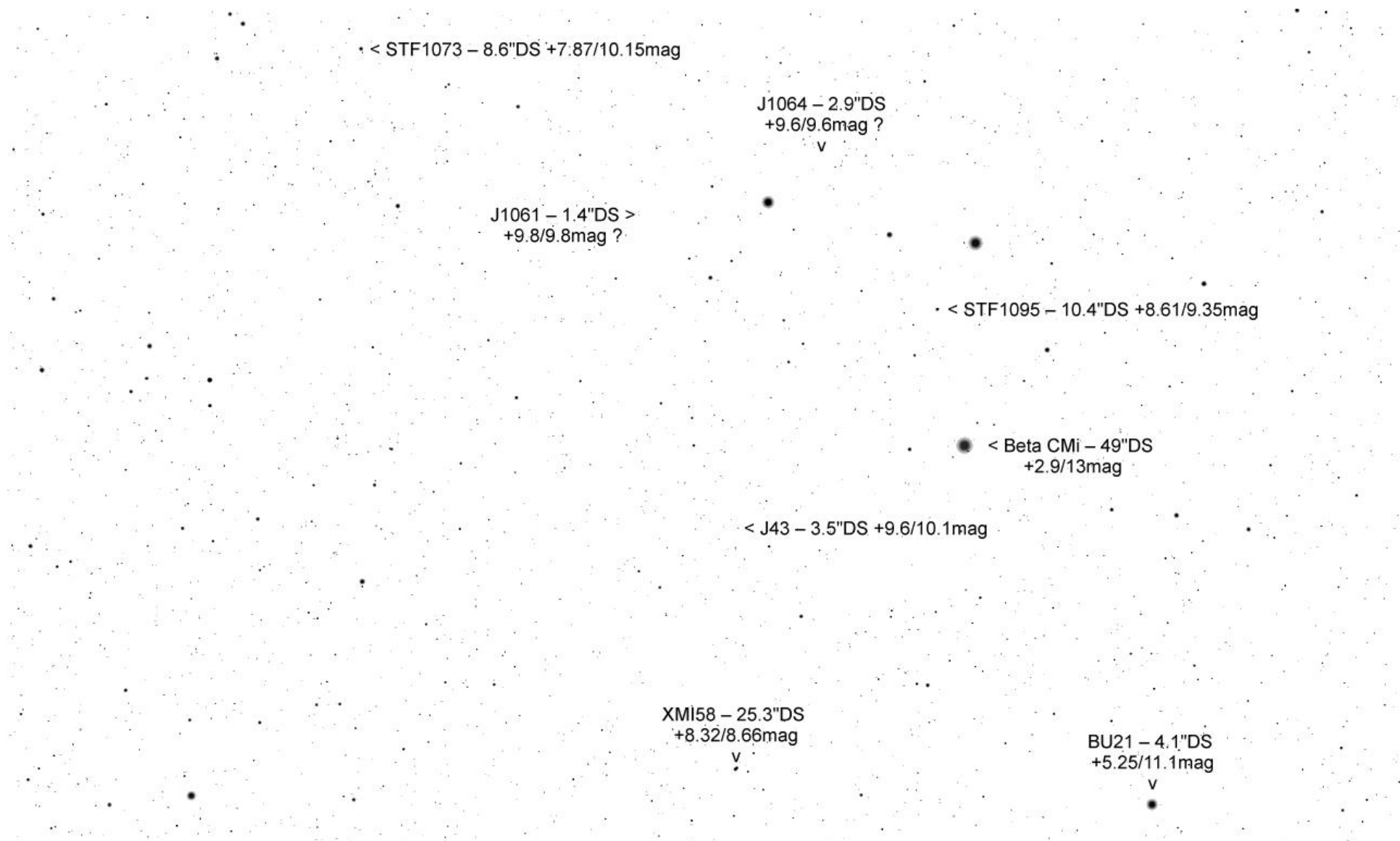
Kleiner Hund: Im Februar unterhalb
von Zwilling und Krebs relativ hoch
im Südwesten.
Sehr kleines Sternzeichen mit nur
wenigen interessanten Objekten





TML Beta CMI per Mitte März





J366 – 2.4"DS
+8.86/10.44mag
v

STF1099 – 3.9"DS
+8.54/8.94mag
v

J1000 – 4.8"DS
+10.85/11.2mag
v

• < STF1082 – 20.1"DS
+8.38/9.47mag

• < STF1073 – 8.6"DS +7.87/10.15mag

STF1099 – 3.9"DS
+8.54/8.94mag

v

< J371 – 4.2"DS
+9/9.8mag

^
HJ763 – 7.4"DS
+10.1/10.5mag

^
STF1130 – 0.5"DS
+8.76/9.48mag

< A2948 – 0.5"DS
+9.87/9.42mag

STF1114 – 6.4"DS
+9.23/9.99mag

v

^
J45 – 3"DS
+10/11.5mag