

STF1126 – 0.9" DS  
+6.6/7mag

v

^  
Procyon – 4.6" DS  
+0.4/10.8mag

• < STF1137 – 2.5" DS  
+8/9.1mag

• STF1168 – 6"DS >  
+6.8/10.6mag

• < BAL2798 – 19.1"DS  
+7.9/12.3mag

• < STF1137 – 2.5"DS  
+8/9.1mag

• < J70 – 2.3"DS +8.3/+10.2mag

• < STF1182 – 4.7"DS +7.5/8.8mag

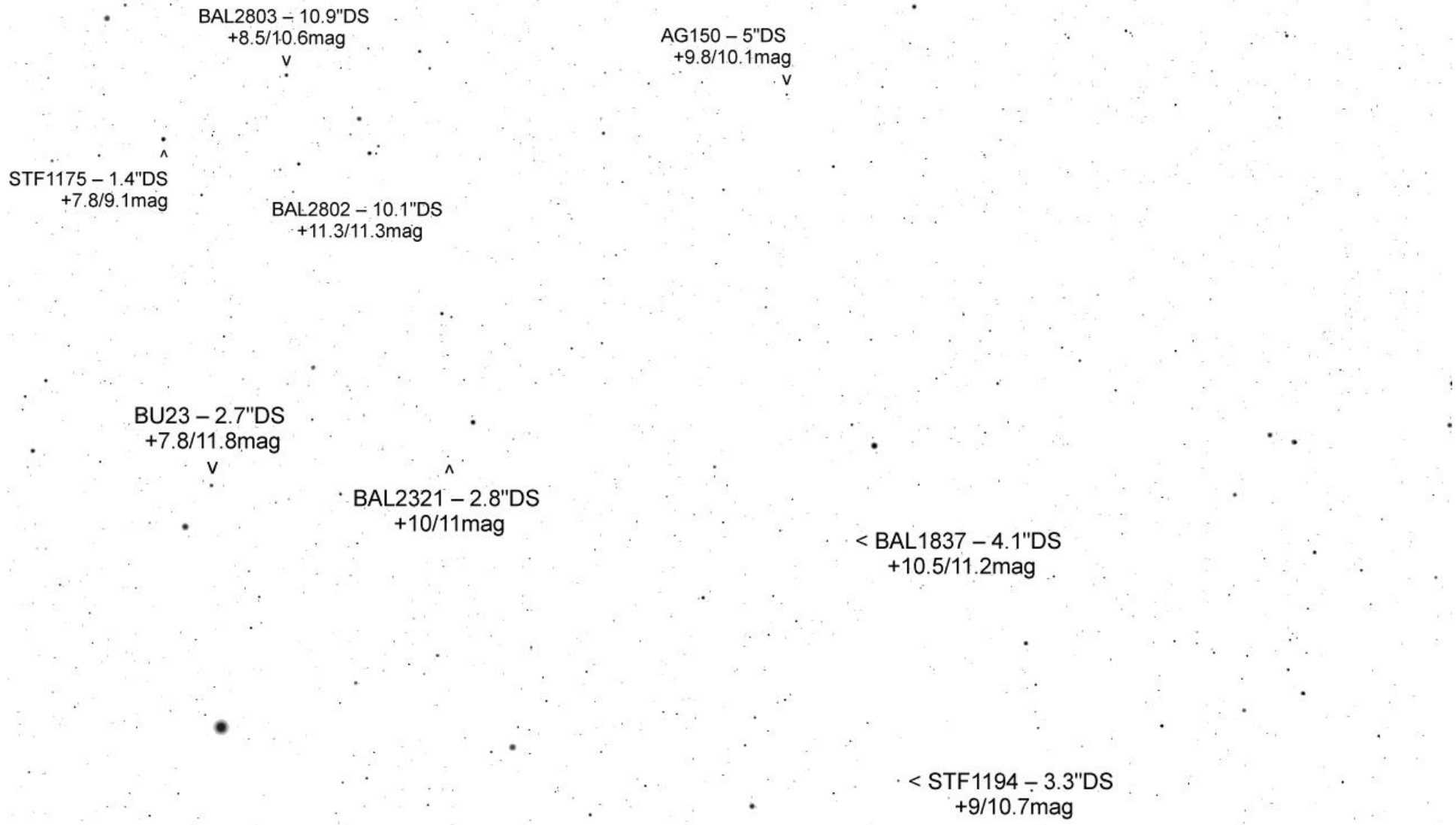
J1001 – 3.3"DS  
+9.4/9.4mag  
v

• < STF1168 – 6"DS +6.8/10.6mag

BAL2803 – 10.9"DS  
+8.5/10.6mag  
v

STF1175 – 1.4"DS > •  
+7.8/9.1mag

BAL2802 – 10.1"DS +11.3/11.3mag



STF1194 – 3.3"DS  
+9/10.7mag  
v

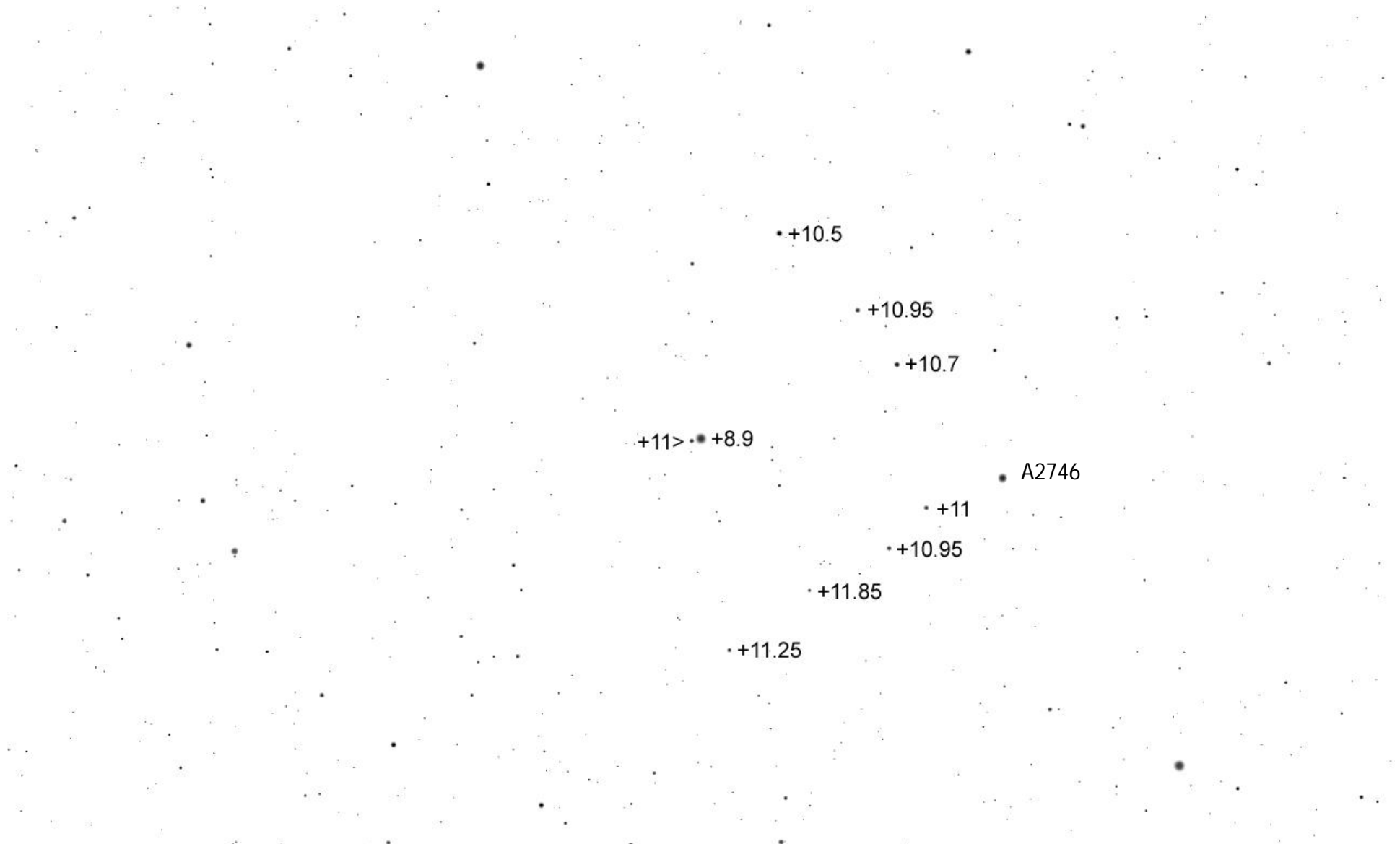
v BAL1827 – 7.6"DS +10.1/10.6mag

< A2746 – 1.6"DS  
+9.4/12.7mag

^  
STF1185 – 3.8"DS  
+9.6/10.3mag

< BAL1124 – 11.3"DS  
+9.8/10.6mag

< BAL1128 – 17.9"DS +8.7/12.2mag



Erde, 'A1 Wien, -168m

FOV 0.64°

31.7 FPS

2013-03-15 21:00:04