

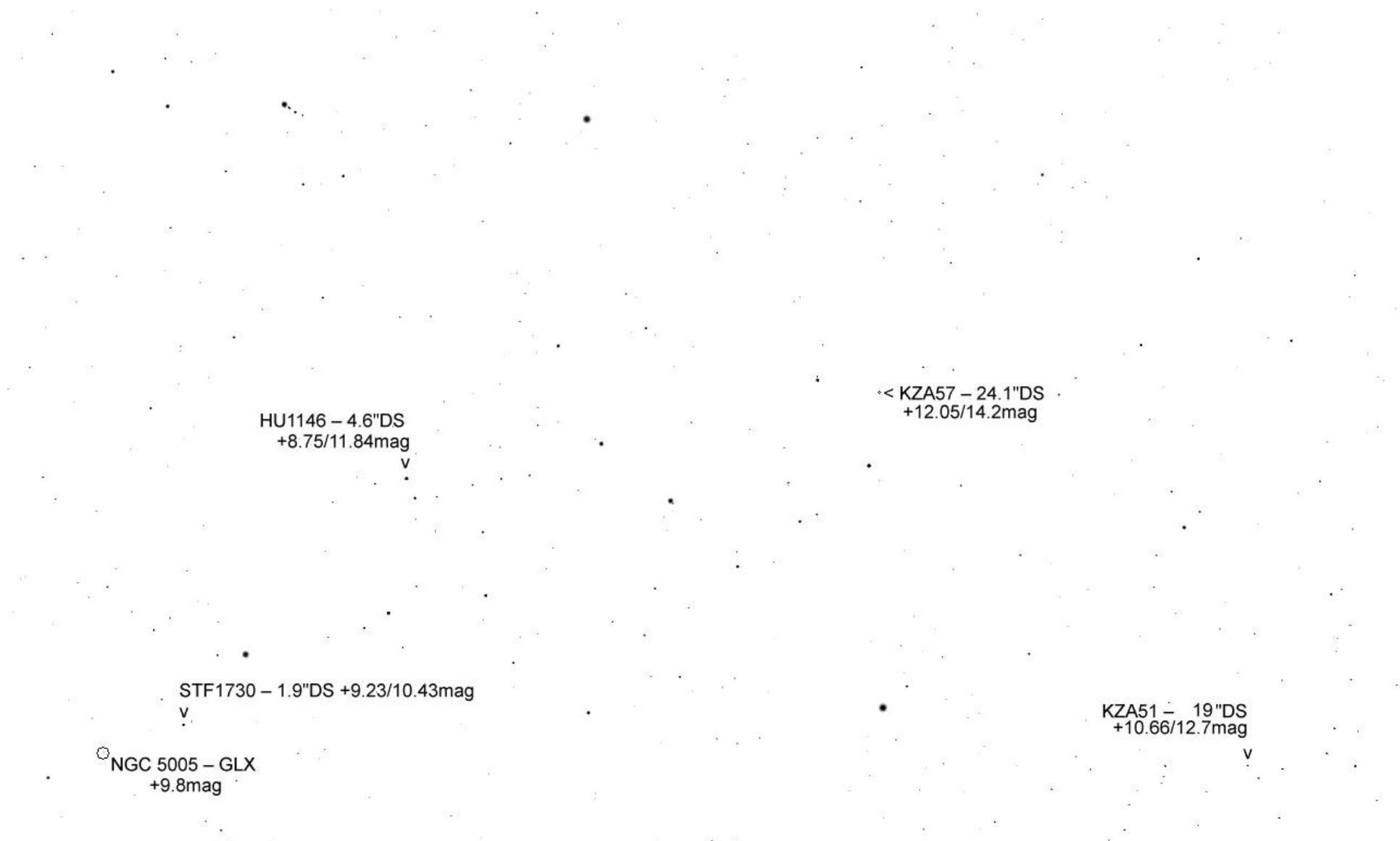
TML Cor Caroli per Mitte Juni 30'

STF1730 – 1.9"DS +9.2/10.4mag =>

○ NGC 5005 GLX
+9.8mag

^
KZA40 – 57"DS
+11.43/12.23mag

● Alpha VNC +2.85mag



HU1146 – 4.6"DS
+8.75/11.84mag

< KZA57 – 24.1"DS
+12.05/14.2mag

STF1730 – 1.9"DS +9.23/10.43mag

KZA51 – 19"DS
+10.66/12.7mag

○ NGC 5005 – GLX
+9.8mag

^
KZA51 – 19"DS
+10.66/12.7mag

ES308 – 7.3"DS
+11.16/11.21mag
v

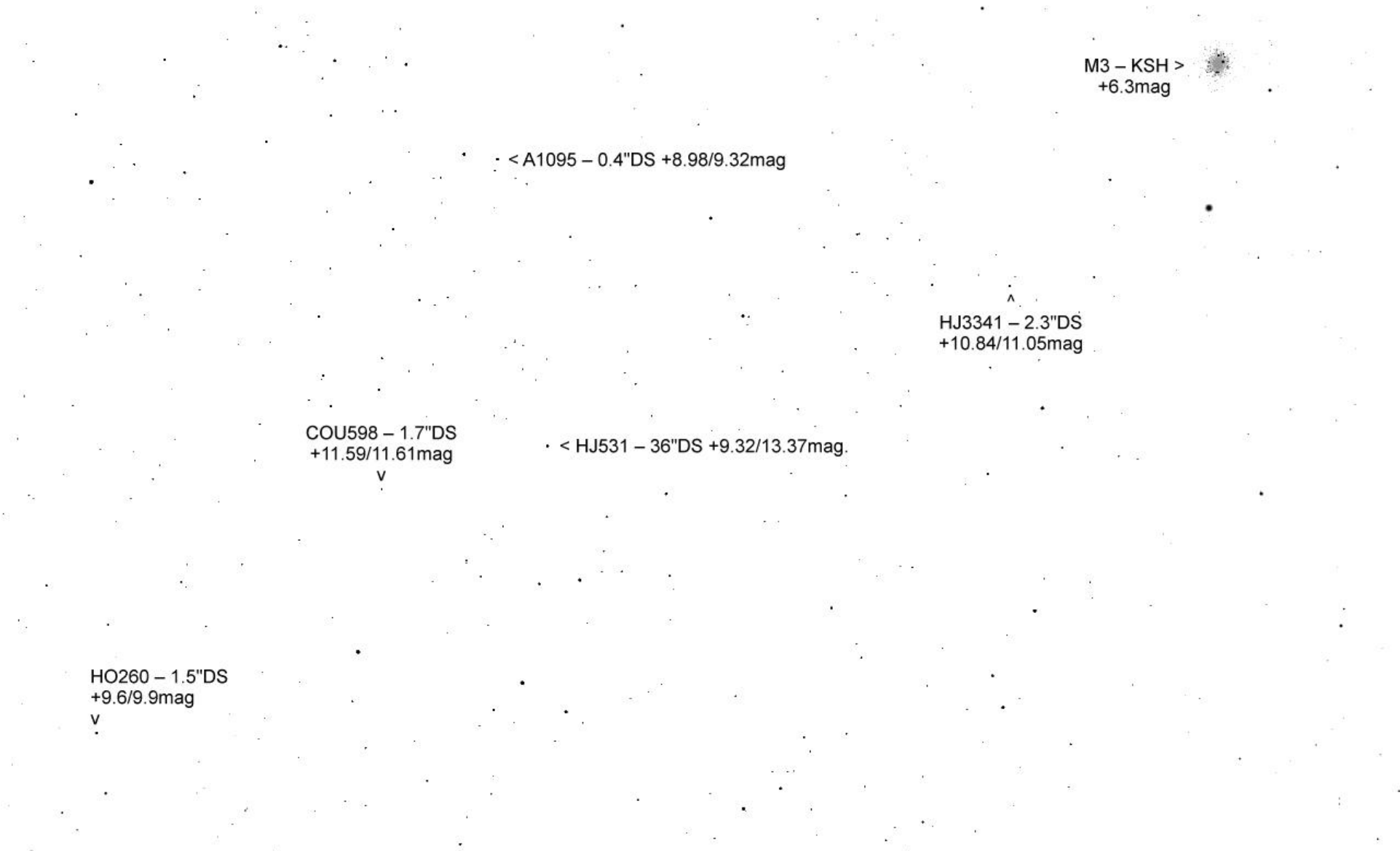
• < STT261 – 2.5"DS
+7.4/7.6mag



STT261 – 2.5"DS
+7.4/7.6mag

• < STF1739 – 14.6"DS +11.05/11.8mag

HO260 – 1.5"DS
+9.6/9.9mag
▽



A685 - 0.8"DS >
+9.98/10.33mag

HDS1942 - 0.6"DS
+7.37/10.91mag

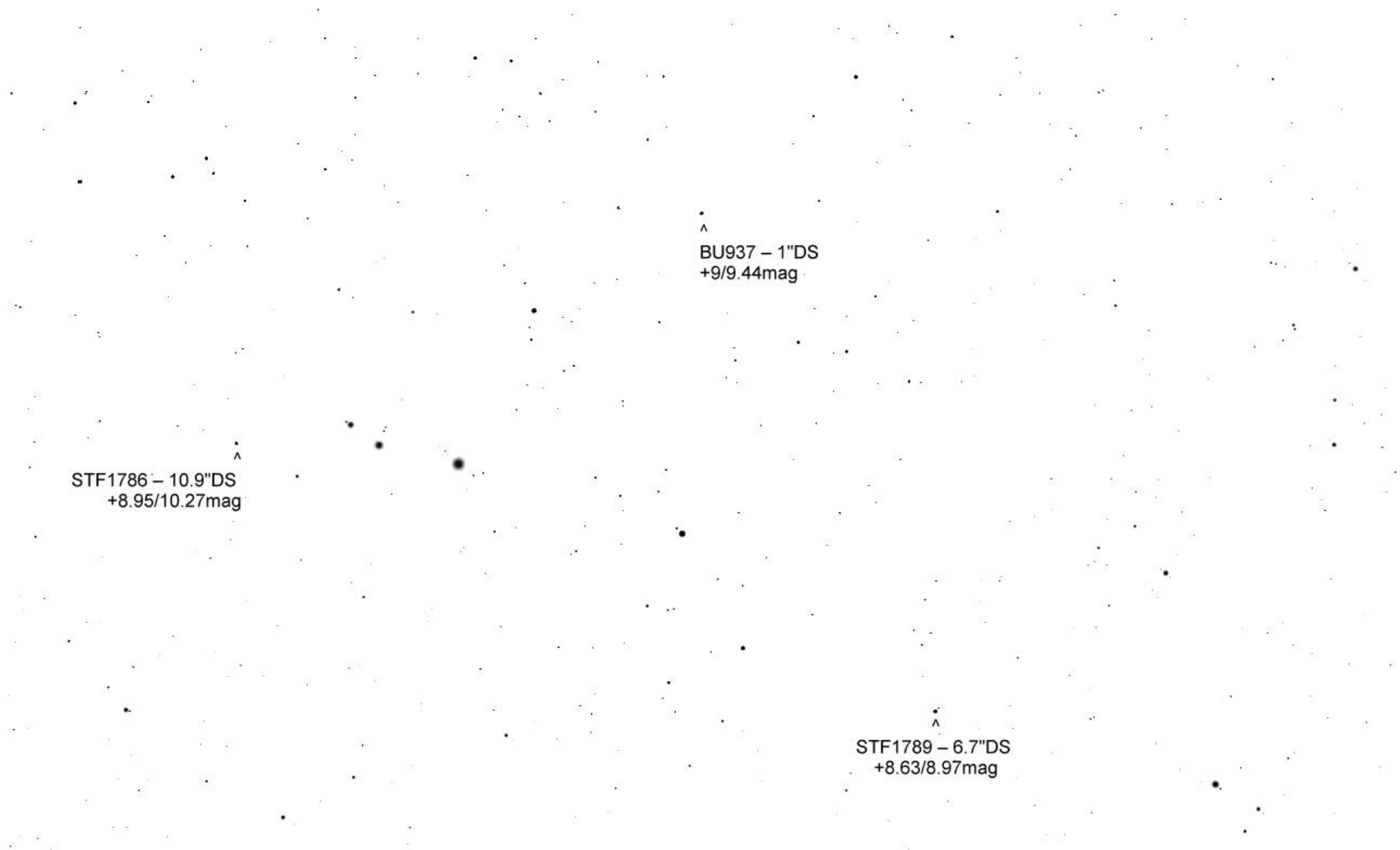
M3 - KSH
+6.3mag

v

STF1789 – 6.7"DS
+8.63/8.97mag

STT272 – 1.3"DS
+7.56/10.18mag

A685 – 0.8"DS +9.98/10.33mag > -



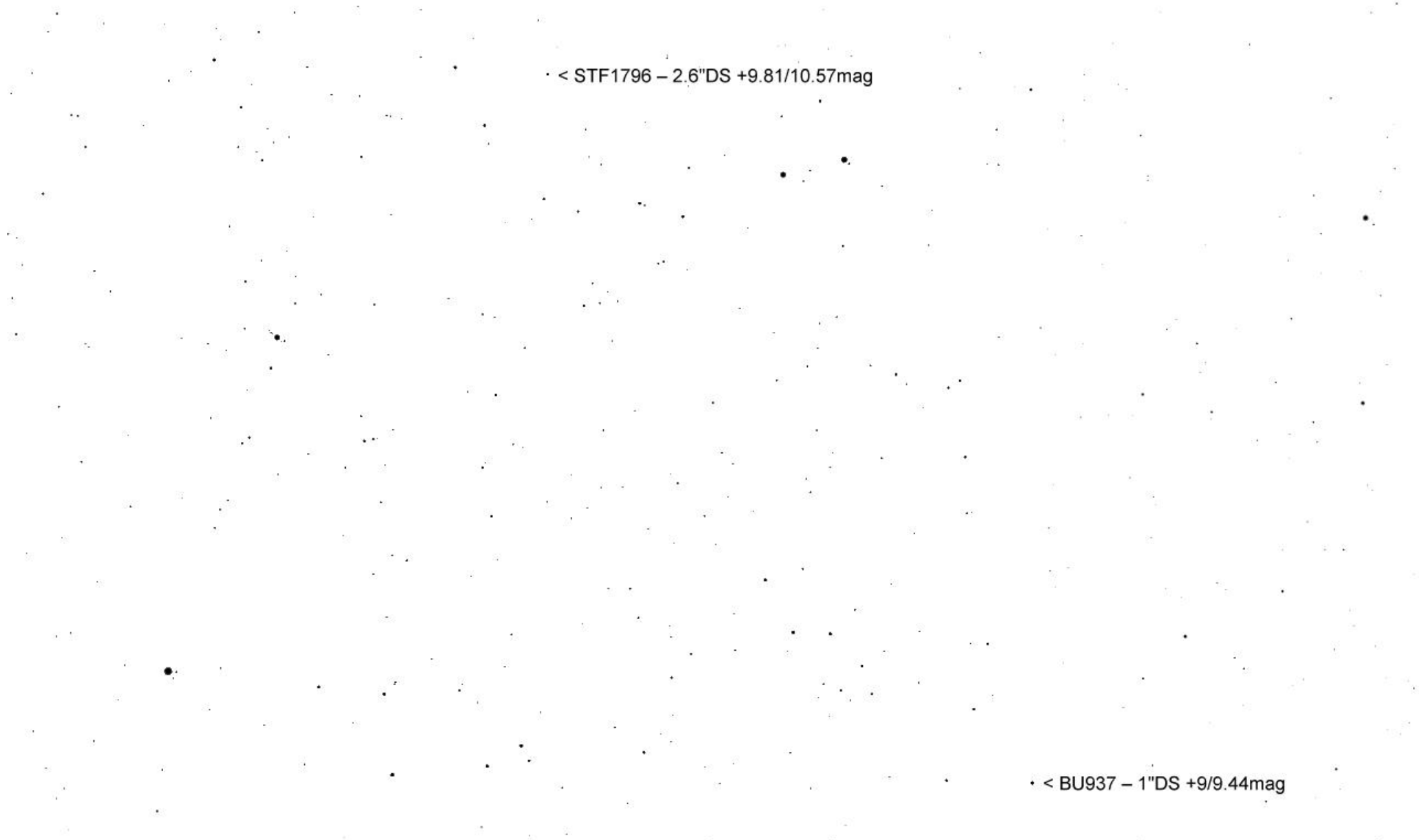
Erde, 'A1 Wien, 168m

FOV 2.72°

27.8 FPS

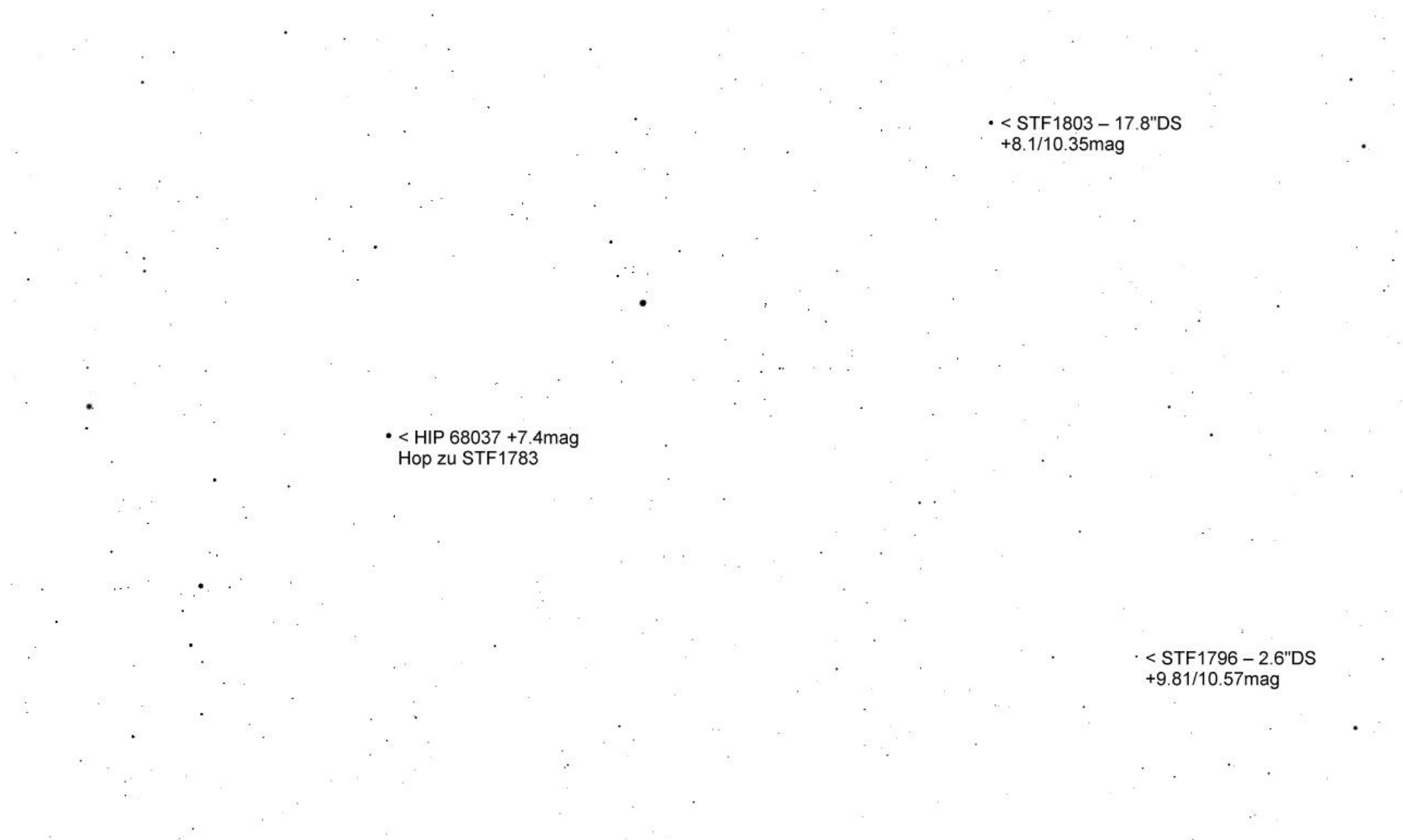
2013-06-15 23:00:00

3° Umfeld BU937 - seitenverkehrt



• < STF1796 – 2.6"DS +9.81/10.57mag

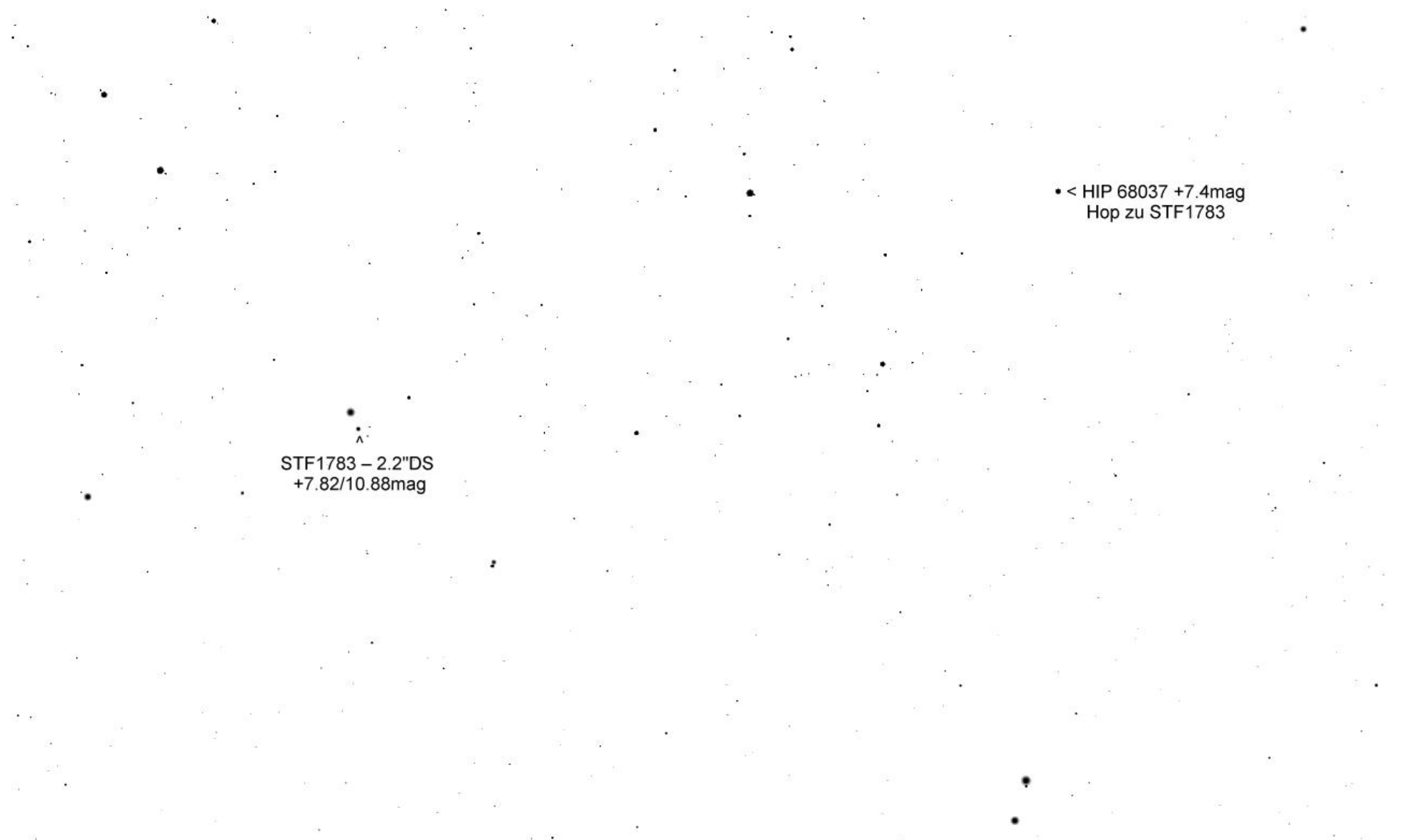
• < BU937 – 1"DS +9/9.44mag



• < STF1803 – 17.8"DS
+8.1/10.35mag

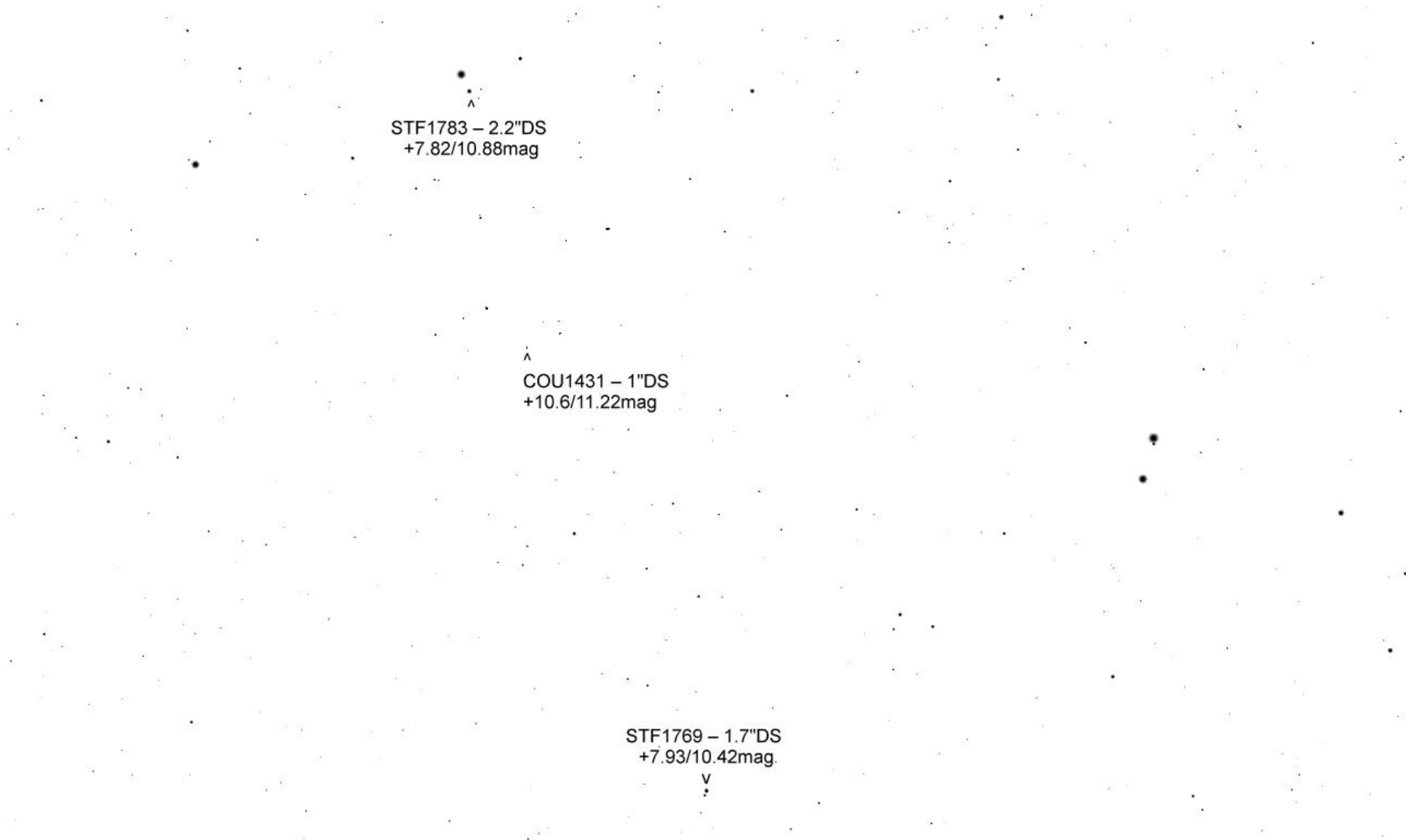
• < HIP 68037 +7.4mag
Hop zu STF1783

• < STF1796 – 2.6"DS
+9.81/10.57mag



STF1783 – 2.2"DS
+7.82/10.88mag

• < HIP 68037 +7.4mag
Hop zu STF1783



^
STF1783 – 2.2"DS
+7.82/10.88mag

^
COU1431 – 1"DS
+10.6/11.22mag

STF1769 – 1.7"DS
+7.93/10.42mag
v

STF1769 – 1.6"DS > *
+7.93/10.42mag

STF1768 – 1.8"DS
+4.98/6.95mag

v

• < STF1755 – 4"DS
+7.34/8.1mag