

TML Cor Caroli per Mitte Juni 30'

abstürzender  
Drache

• < M94 – GLX  
+8.9mag

Cor Caroli – 18.8"DS  
+2.85/5.52mag

STF1688 – 14.4"DS  
+9.24/11.06mag

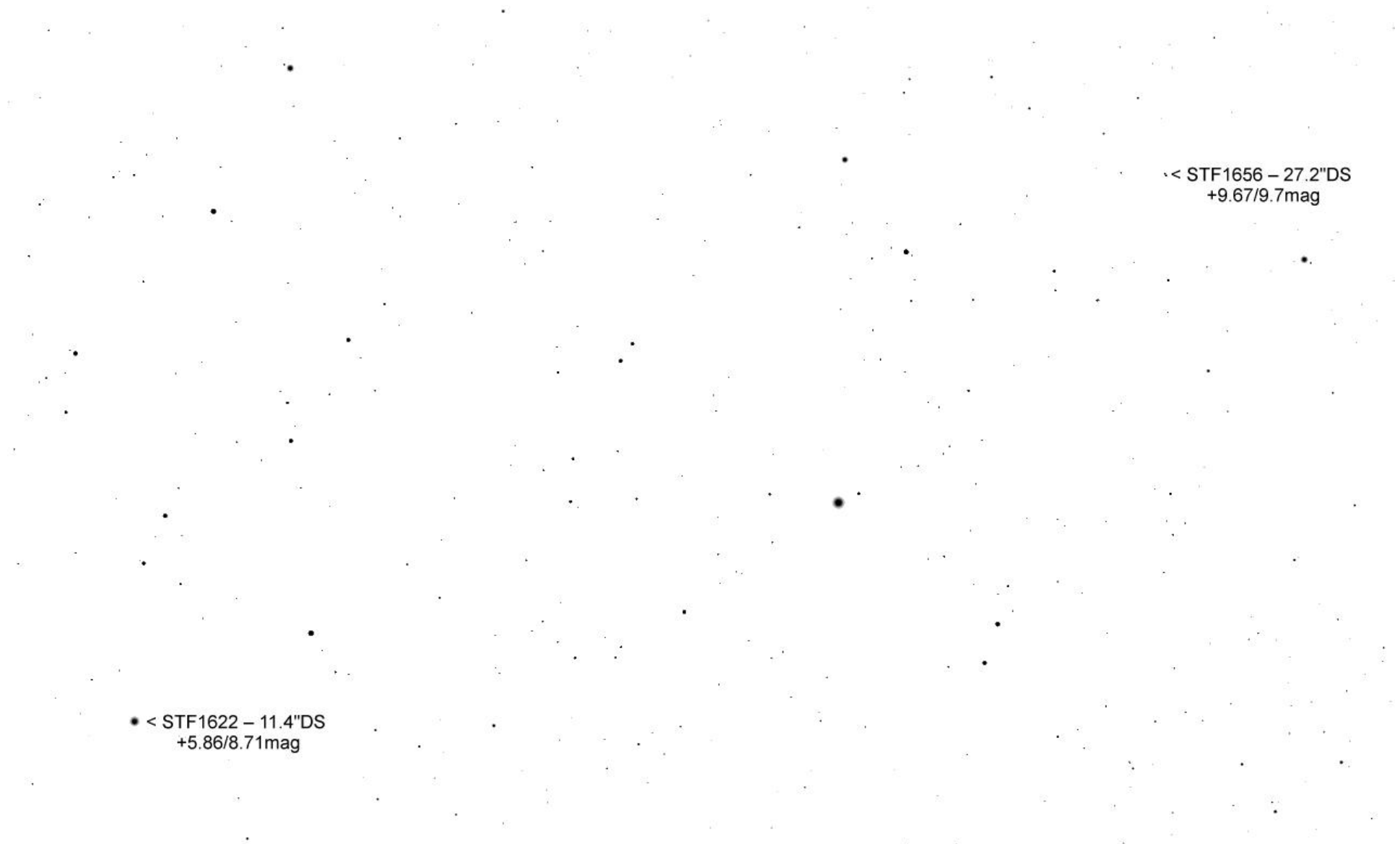
• < COU1425 – 0.8"DS  
+10.93/11.13mag

• < HJ2617 – 5.9"DS  
+8.41/9.61mag

< COU1425 – 0.8"DS  
+10.93/11.13mag

• < HJ2617 – 5.9"DS  
+8.41/9.61mag

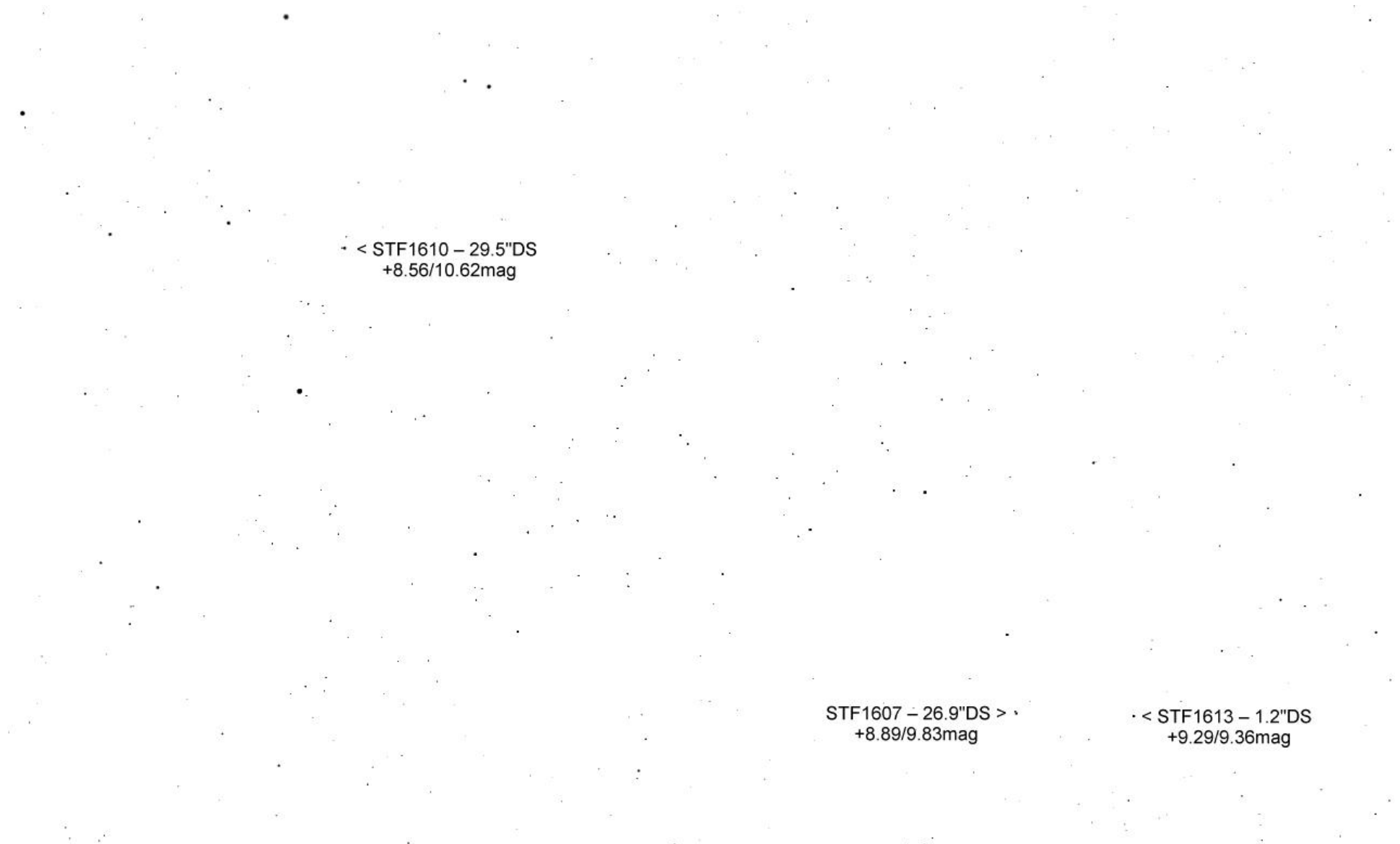
< STF1656 – 27.2"DS  
+9.67/9.7mag



• < STF1622 – 11.4"DS  
+5.86/8.71mag

• < STF1656 – 27.2"DS  
+9.67/9.7mag



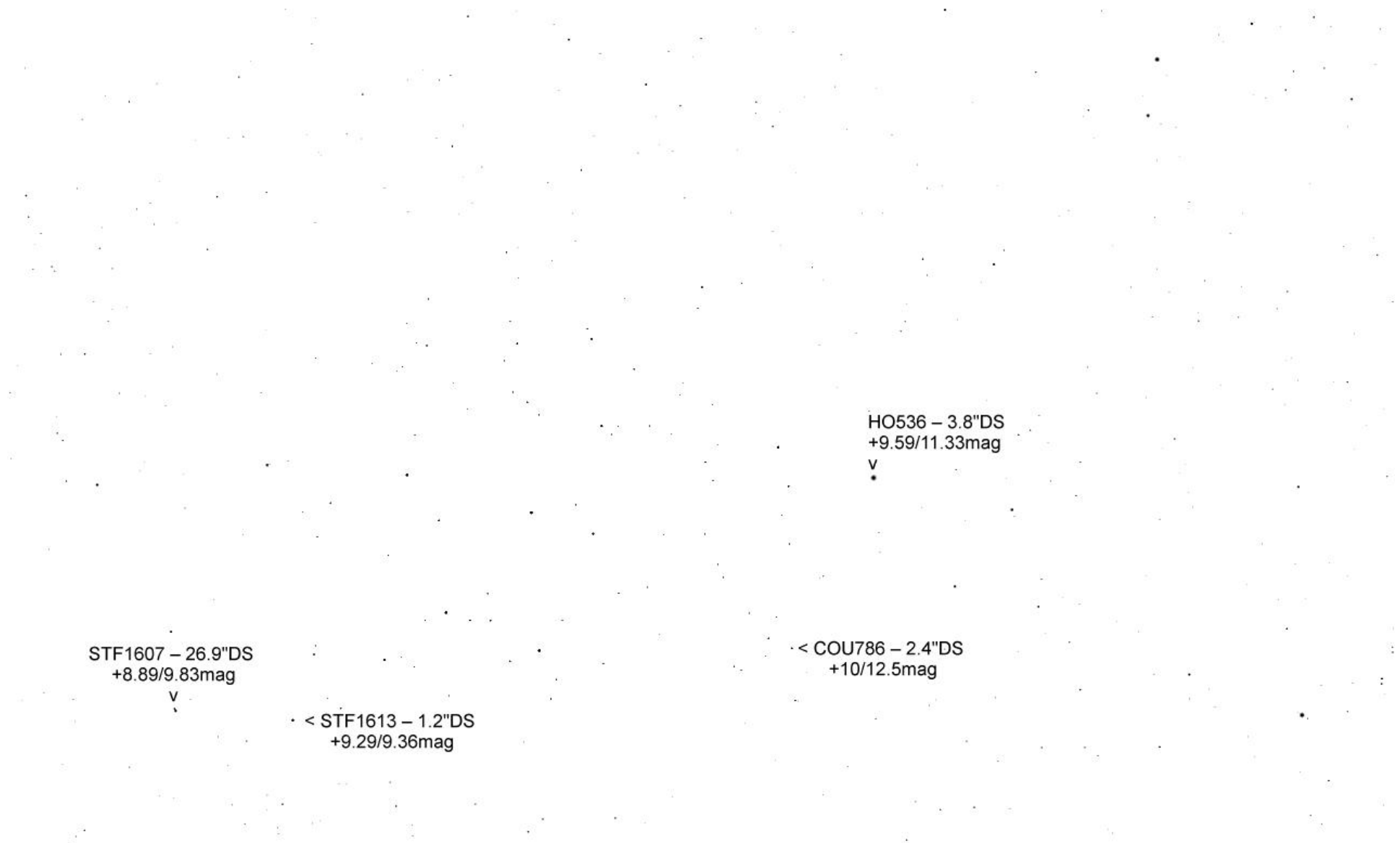


< STF1610 – 29.5"DS  
+8.56/10.62mag

STF1607 – 26.9"DS >  
+8.89/9.83mag

< STF1613 – 1.2"DS  
+9.29/9.36mag





STF1607 – 26.9"DS  
+8.89/9.83mag

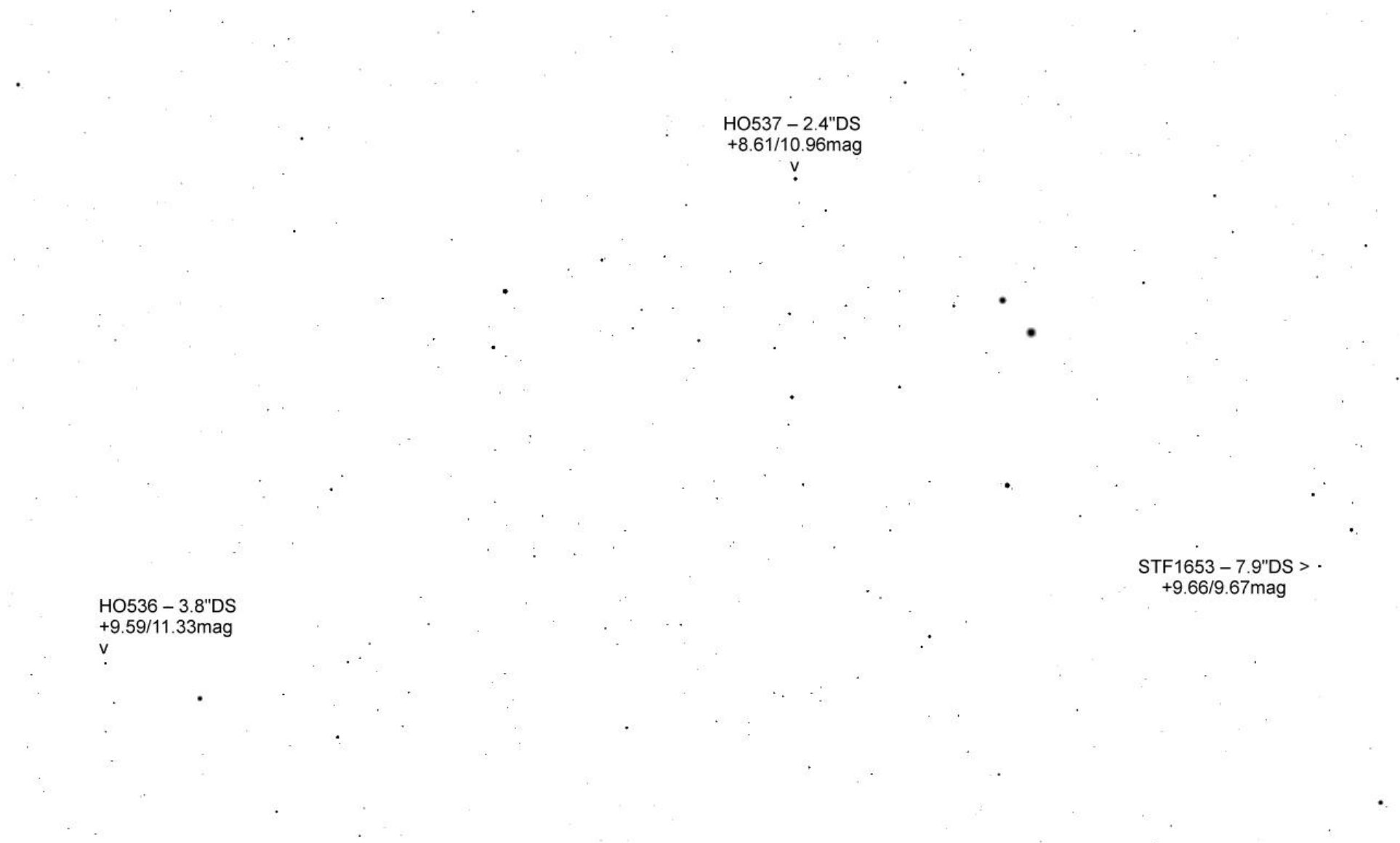
v

< STF1613 – 1.2"DS  
+9.29/9.36mag

HO536 – 3.8"DS  
+9.59/11.33mag

v

< COU786 – 2.4"DS  
+10/12.5mag



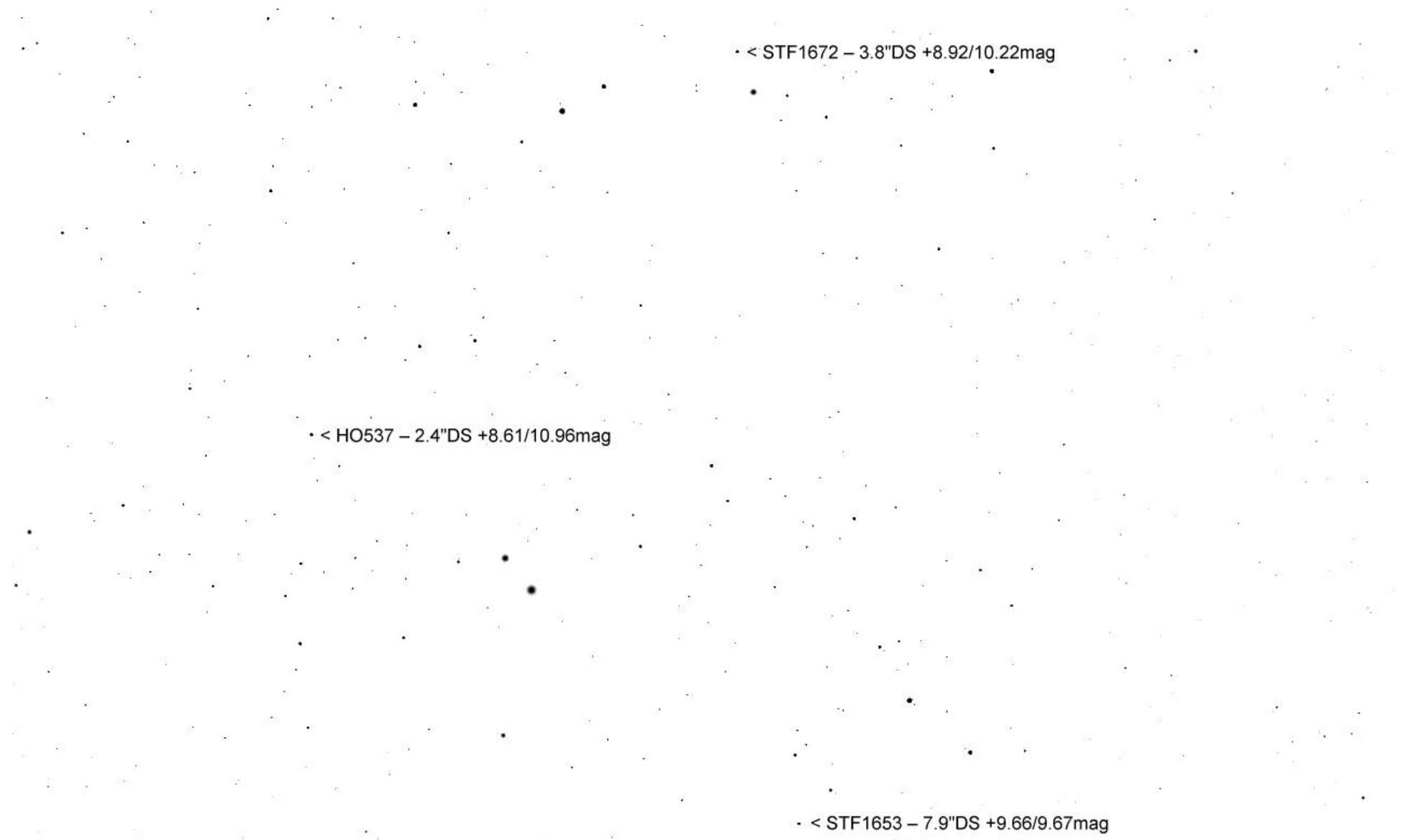
HO537 – 2.4"DS  
+8.61/10.96mag

v

HO536 – 3.8"DS  
+9.59/11.33mag

v

STF1653 – 7.9"DS >  
+9.66/9.67mag



• < STF1672 - 3.8"DS +8.92/10.22mag

• < HO537 - 2.4"DS +8.61/10.96mag

• < STF1653 - 7.9"DS +9.66/9.67mag