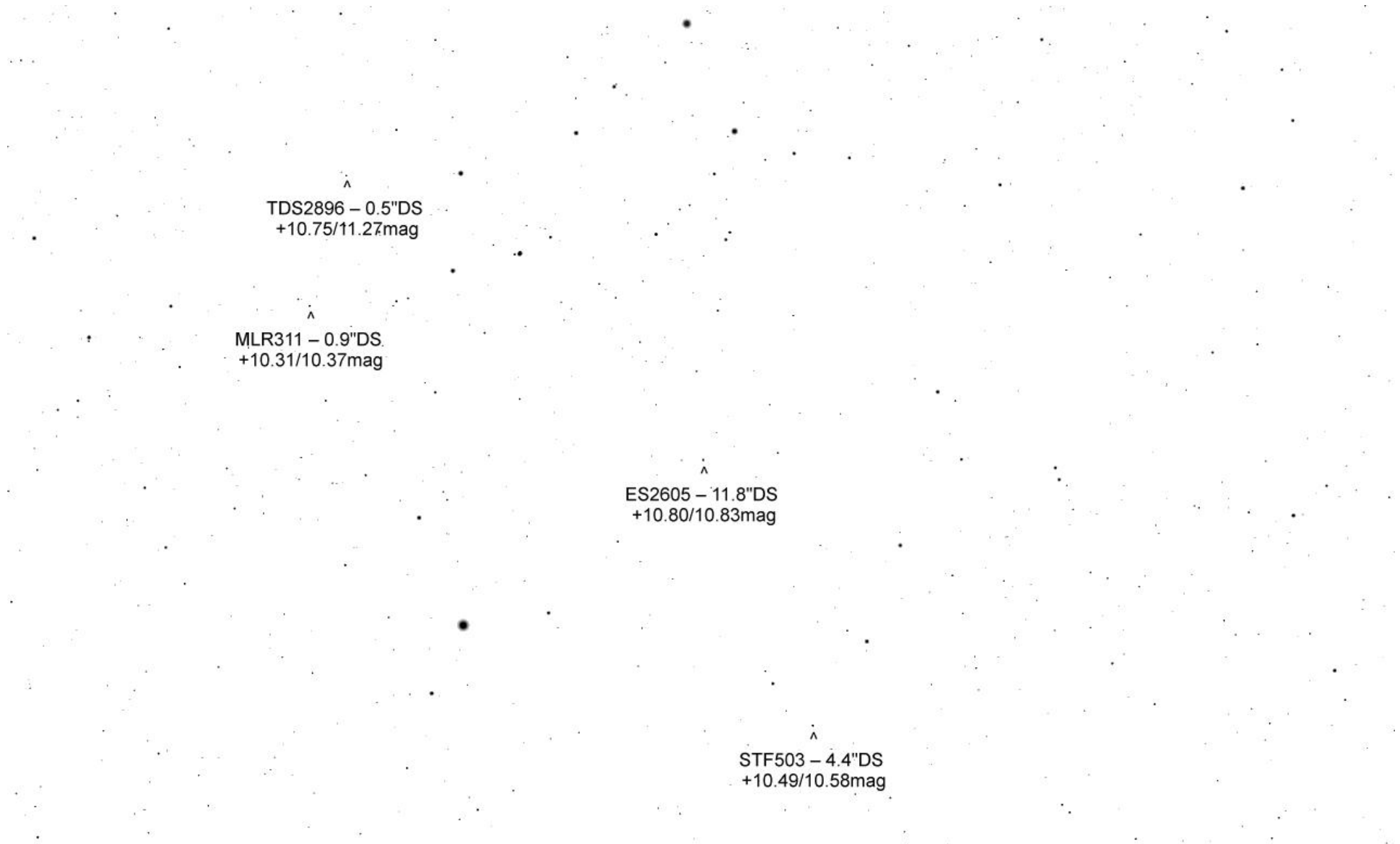
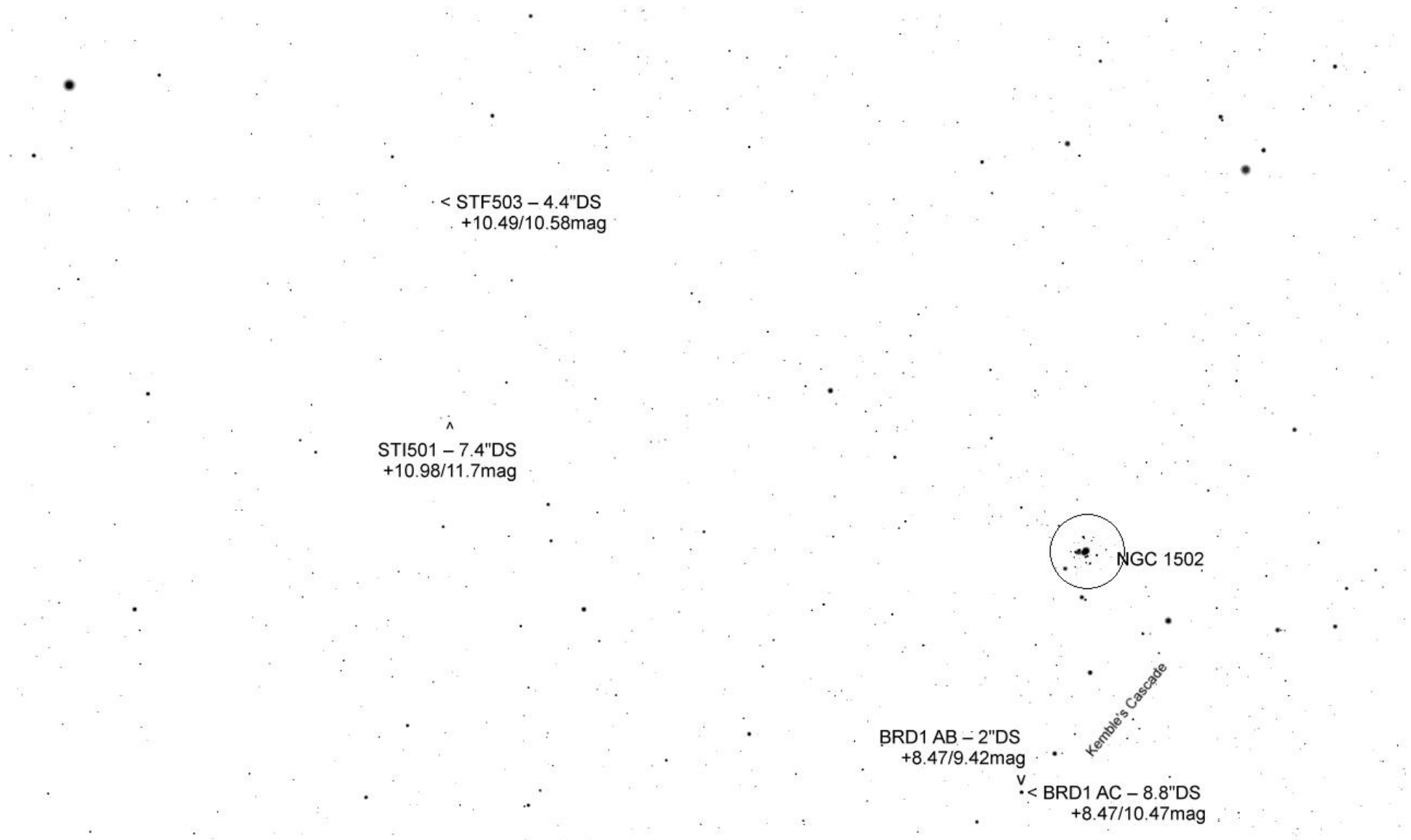


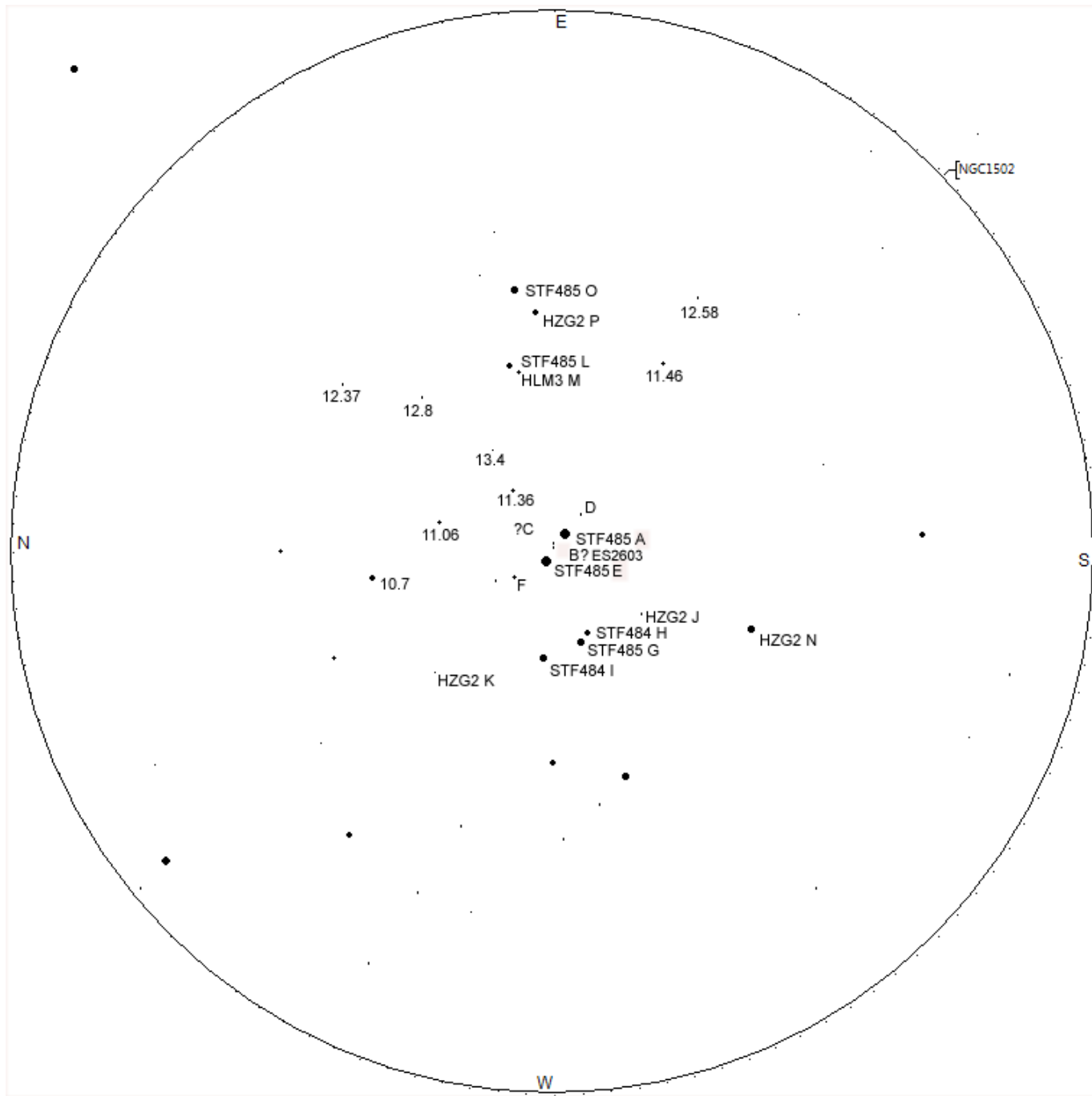
Alpha Cam  
+4.25mag  
v

^  
STF584 – 11.9"DS  
+7.61/9.40mag

^  
TDS2896 – 0.5"DS +10.75/11.27mag







• < BRD1 AB – 2"DS  
+8.47/9.42mag

Kemles Cascade

• TDS120 – 1.2"DS  
+10.83/12.34mag

• TDS652 – 0.6"DS  
+10.61/10.67mag

TDS652 – 0.6"DS >  
+10.61/10.67mag

ES1958 – 3.5"DS  
+8.5/11.4mag  
v

STF397 – 5.2"DS  
+9.33/10.46mag  
v

HLM2 – 5.1"DS +9.22/10.90mag >  
STF284 – 1.9"DS +8.13/8.85mag >

STF389 – 2.5"DS  
+6.42/7.89mag  
v

STF385.– 2.3"DS  
+4.23/7.80mag