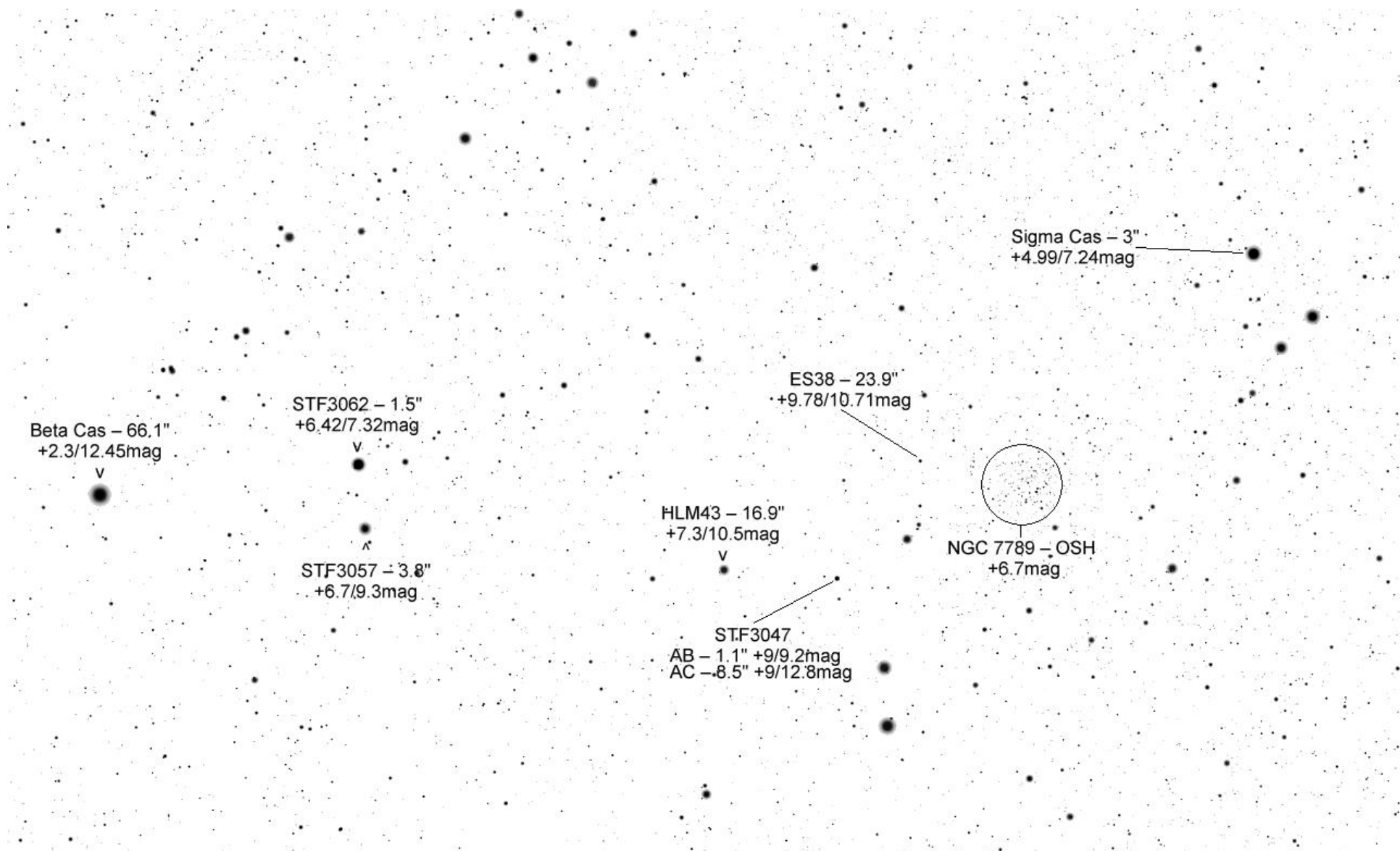
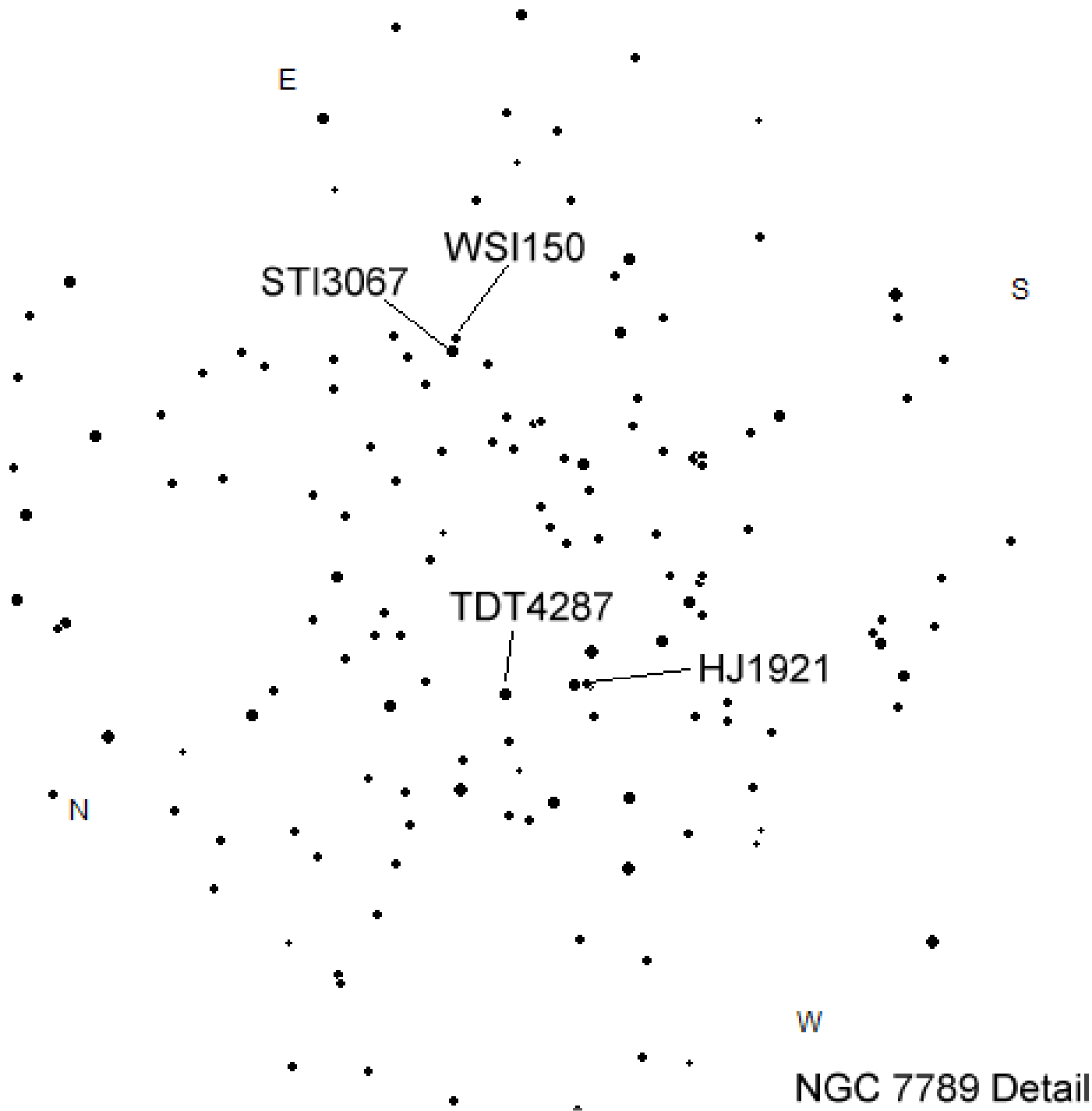
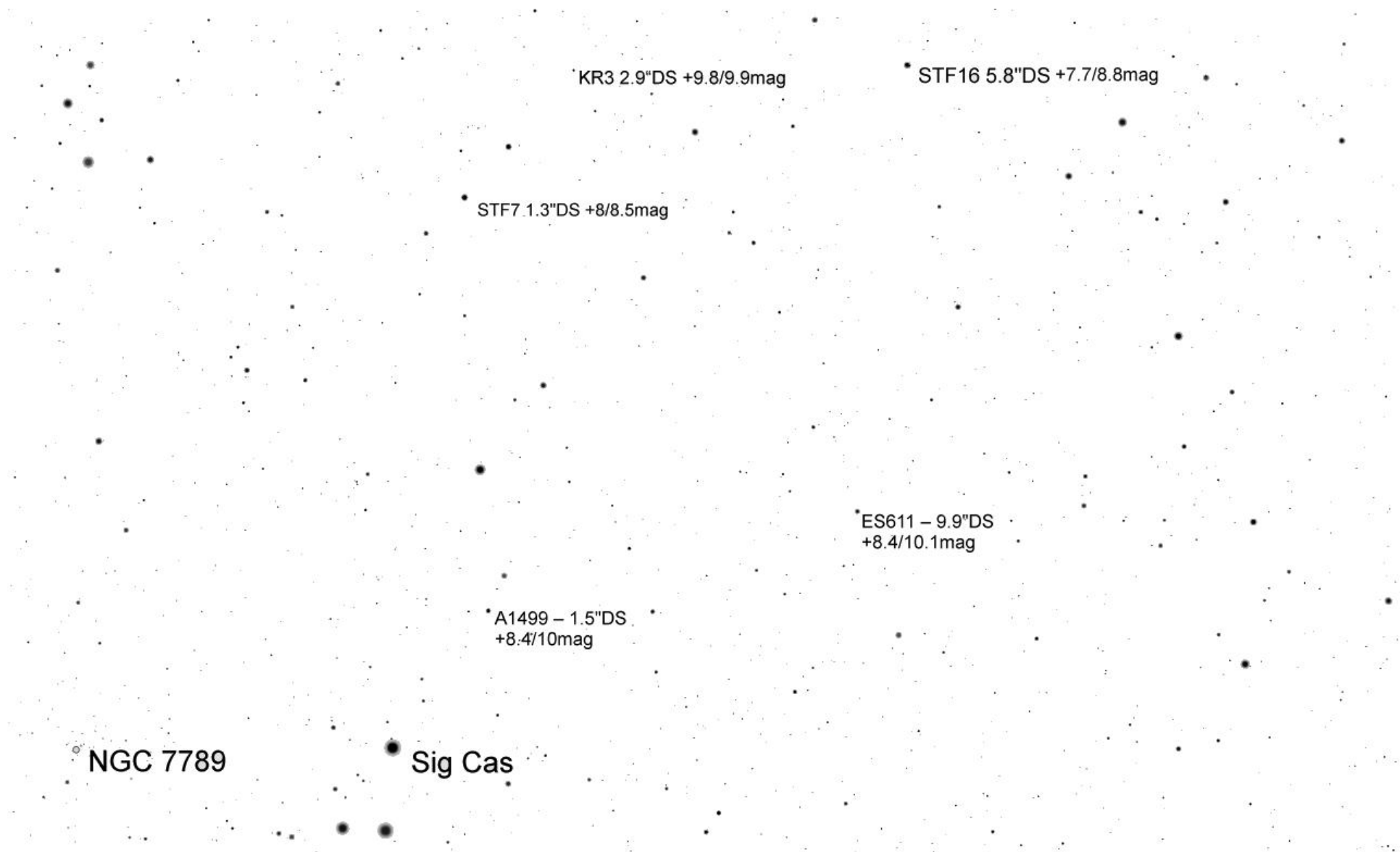


TML Beta Cas per Mitte November 15' FoV





NGC 7789 Detail



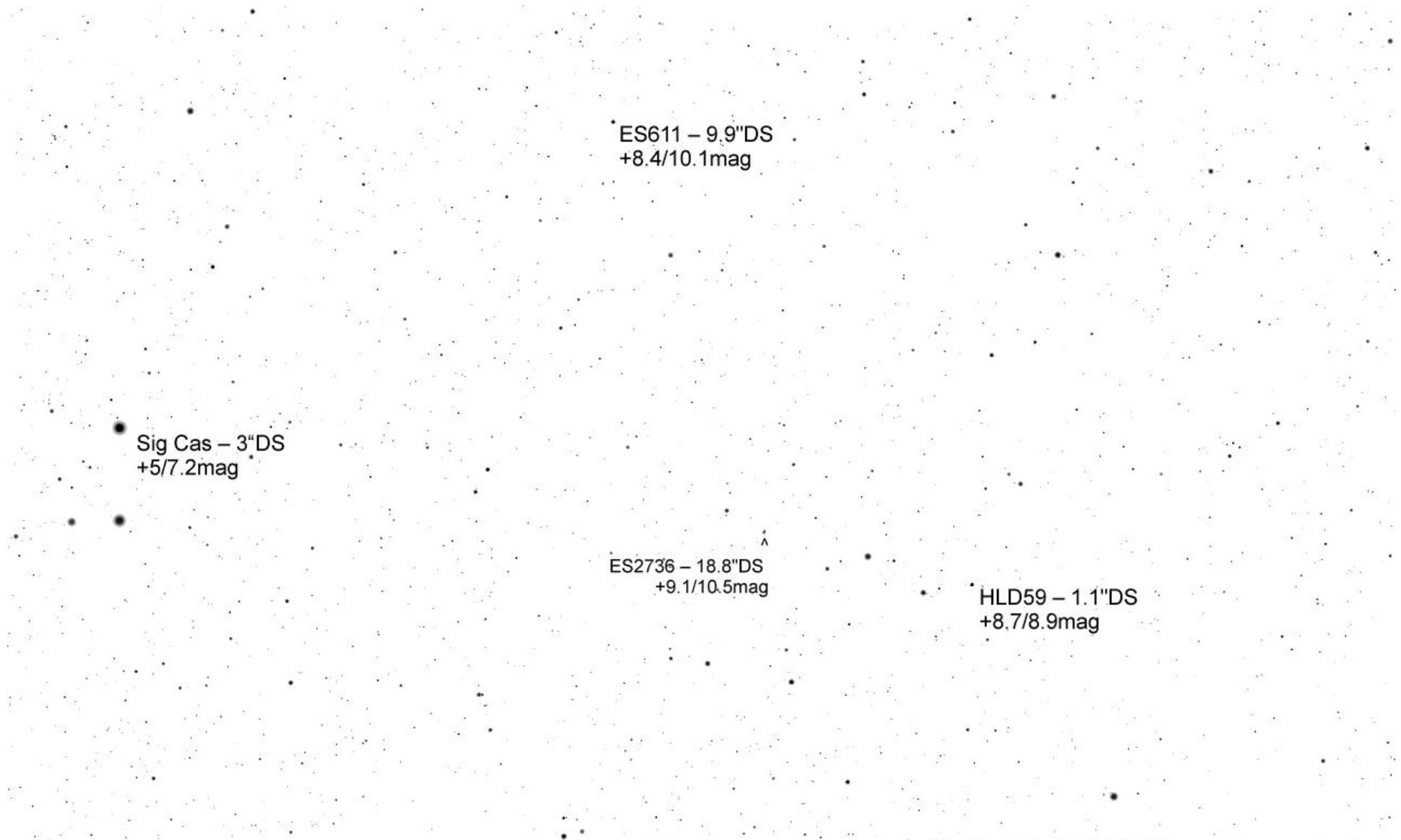
Erde, Wien, 168m

FÖW 2.8°

22.6 FPS

2010-11-26 23:31:24

3° Umfeld STF7 - seitenverkehrt



ES611 – 9.9"DS
+8.4/10.1mag

Sig Cas – 3"DS
+5/7.2mag

ES2736 – 18.8"DS
+9.1/10.5mag

HLD59 – 1.1"DS
+8.7/8.9mag

HLD59 – 1.1"DS
+8.7/8.9mag

ES2735 – 12.6"DS +8.9/9.5mag

STTA251 – 47.6"DS +6.9/9.1mag

ALD121 – 10.2"DS +9.2/10.2mag

v

• < STT498 – 17.3"DS
+7.6/10.4mag

ALD121 – 10.2"DS
+9.2/10.2mag
v

ES2729 – 19.8"DS
+8.1/9.5mag
v

^
HJ1899 – 12.9"DS
+8.7/10.5mag

^
STI3006 – 12.9"DS
+9.94/12.12mag

ES2729 – 19.8"DS
+8.1/9.5mag
v

STT498 – 17.3"DS
+7.6/10.4mag
v