

HJ1108 – 8.8"DS >
+11.36/12.10mag

BU873 – 2.2"DS
+7.18/10.72mag

^
STF199 – 35.8"DS
+9.21/9.37mag

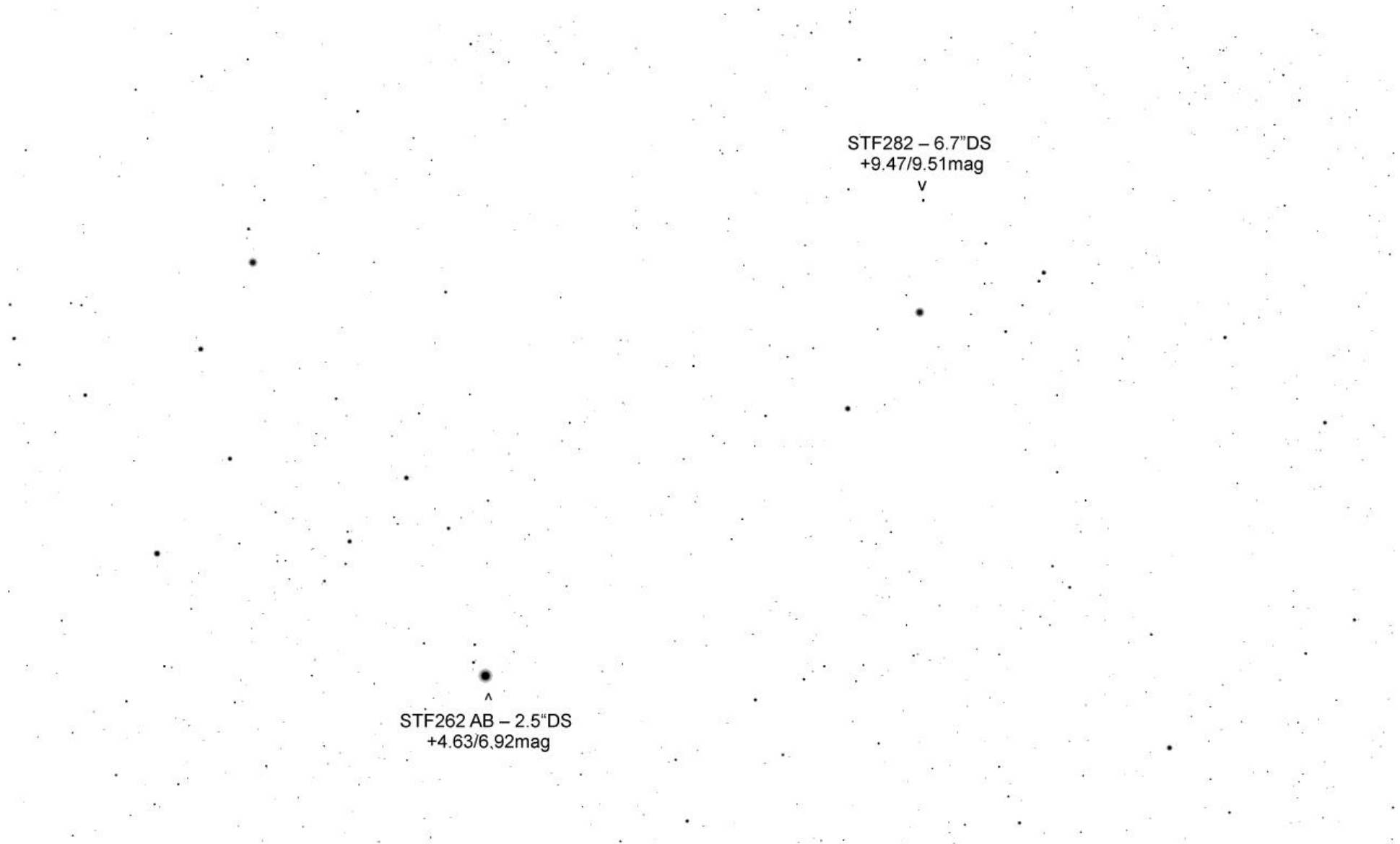
^
Eps Cas
+3.38mag

STF262 AC – 7.2"DS > ● < STF262 AB – 2.5"DS
+4.63/9.05mag +4.63/6.92mag

^
HJ1113 – 8.6"DS
+10.25/12.50mag

HJ1108 – 8.8"DS >
+11.36/12.10mag

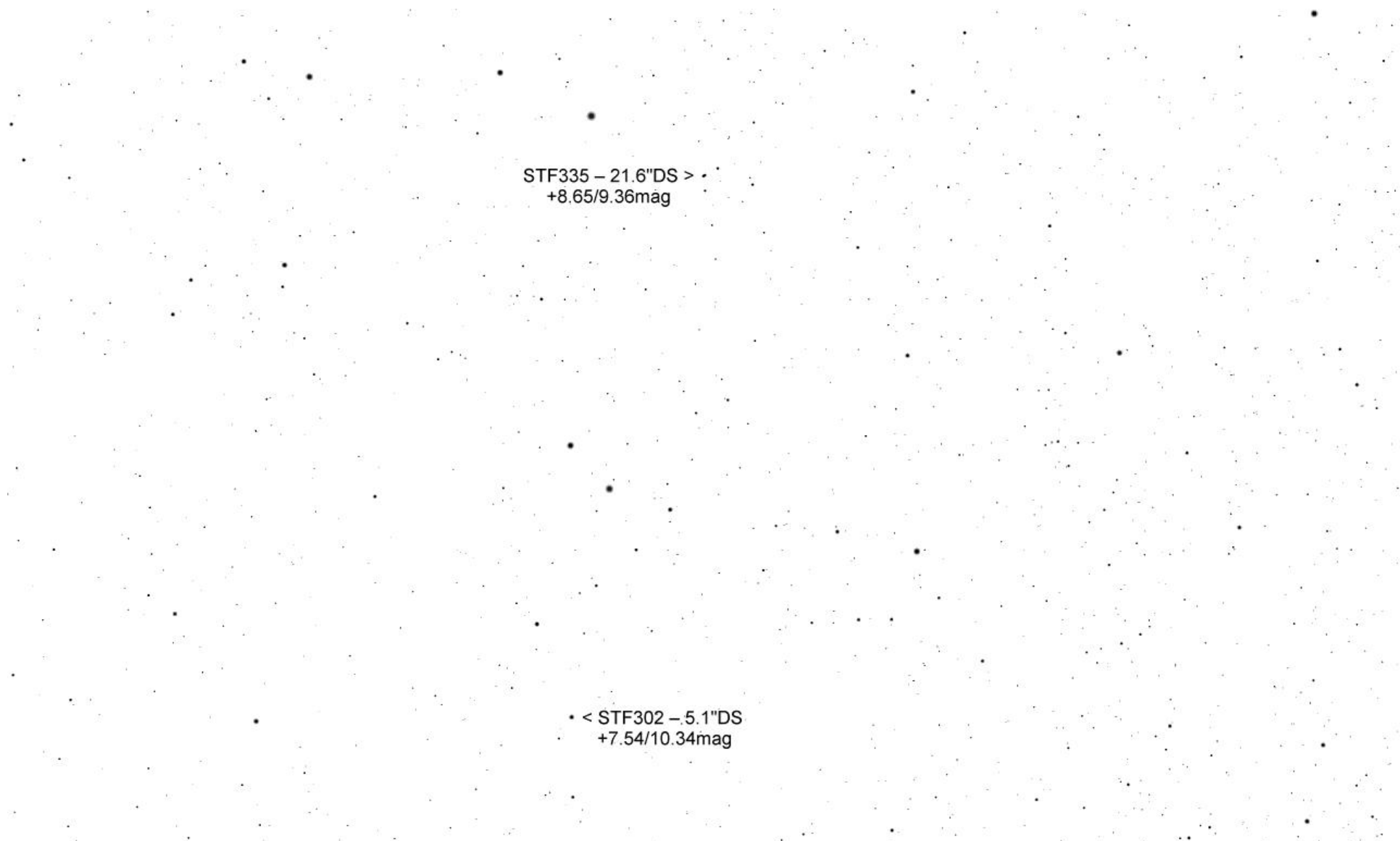
STF199 – 35.8"DS > ~
+9.21/9.37mag

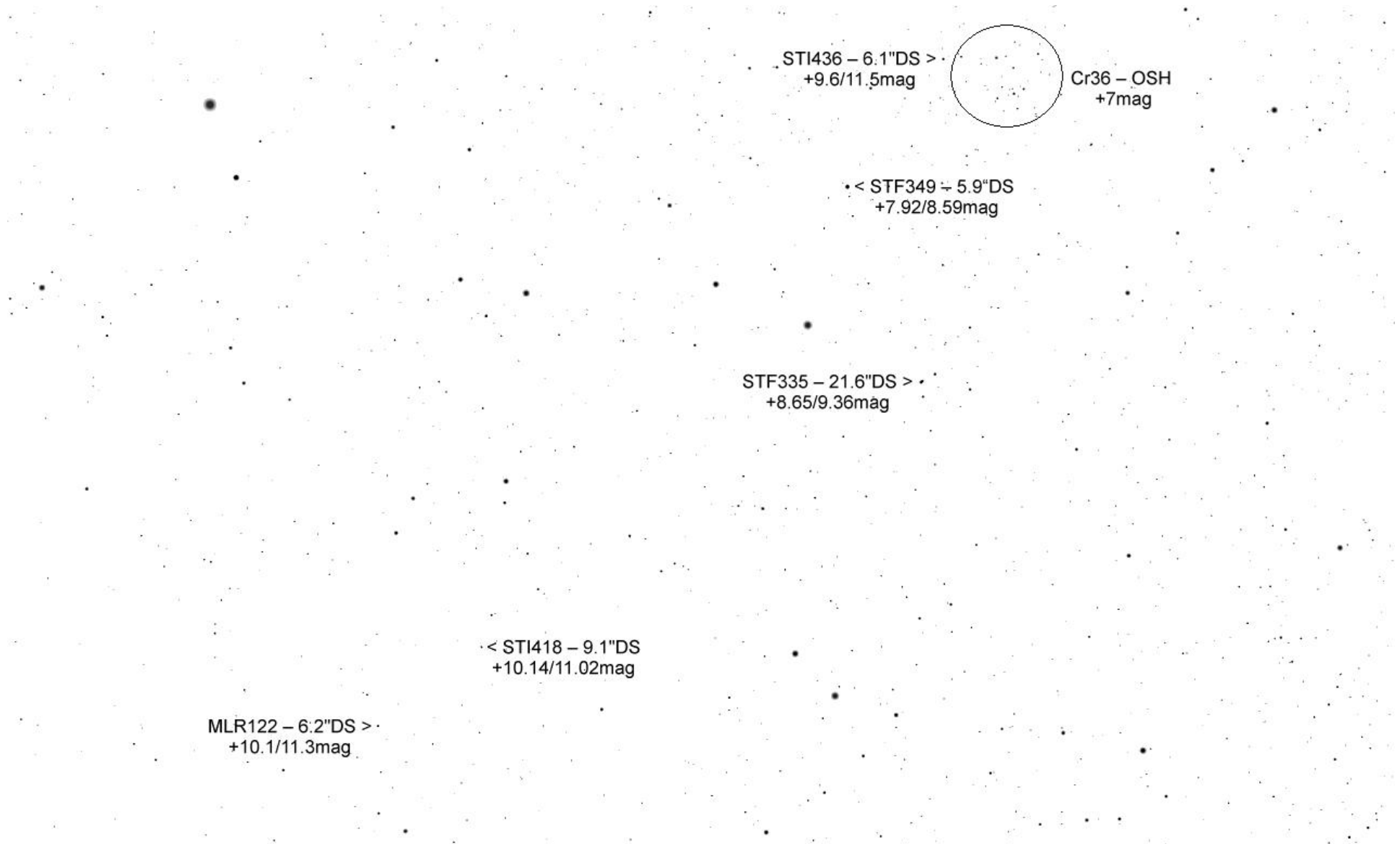




• < STF302 - 5.1"DS
+7.54/10.34mag

STF282 - 6.7"DS
+9.47/9.51mag
v



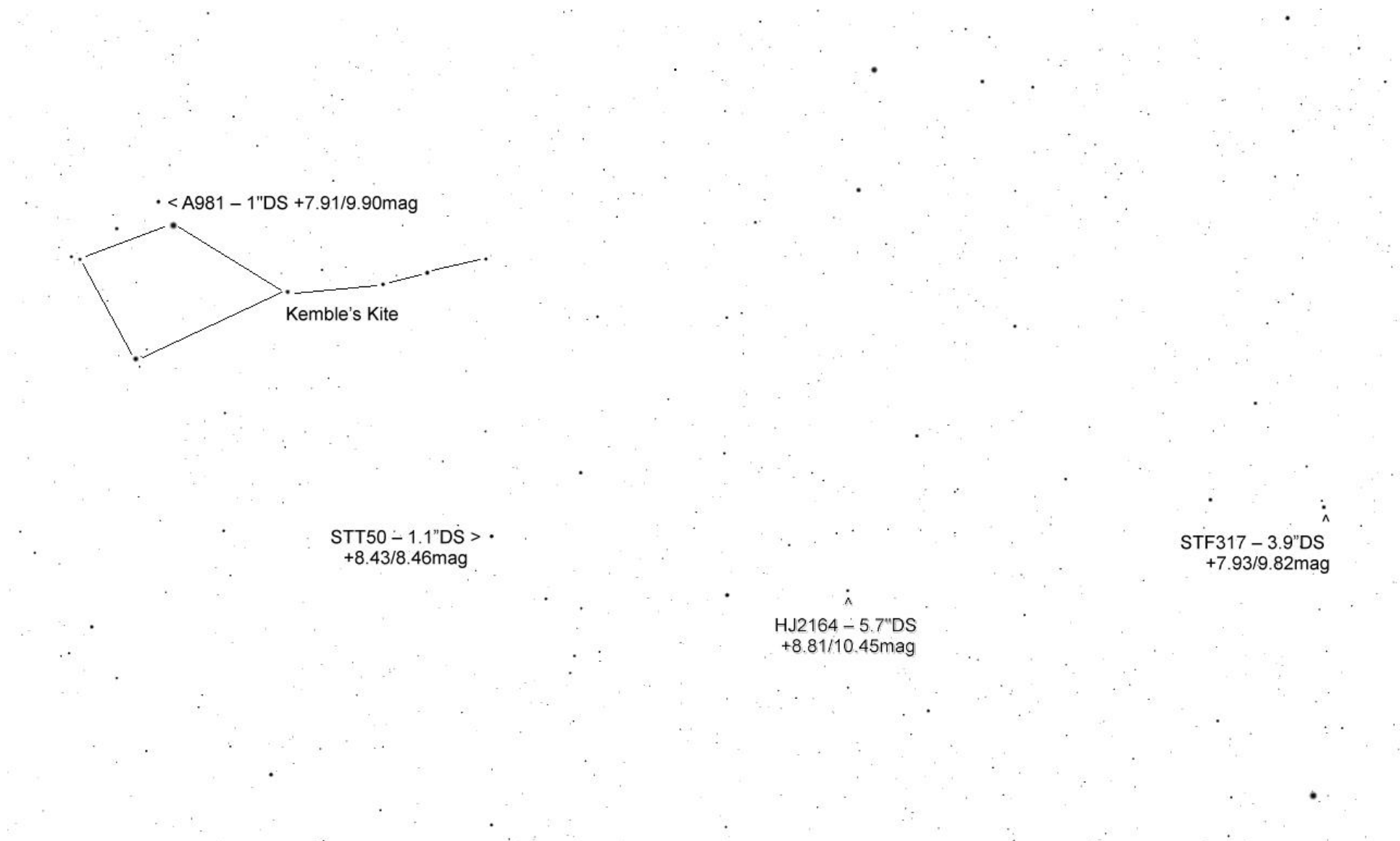




< MLR122 - 6.2"DS
+10.1/11.3mag

STF317 - 3.9"DS
+7.93/9.82mag

< HJ1125 - 26.1"DS
+8.58/10.40mag





• STT50 – 1.1"DS •
+8.43/8.46mag

• < STF312 – 1.7"DS
+8.16/8.92mag