

Eps Cep - 83.1" DS  
+4.22/12.80mag

v

Zeta Cep  
+3.35mag

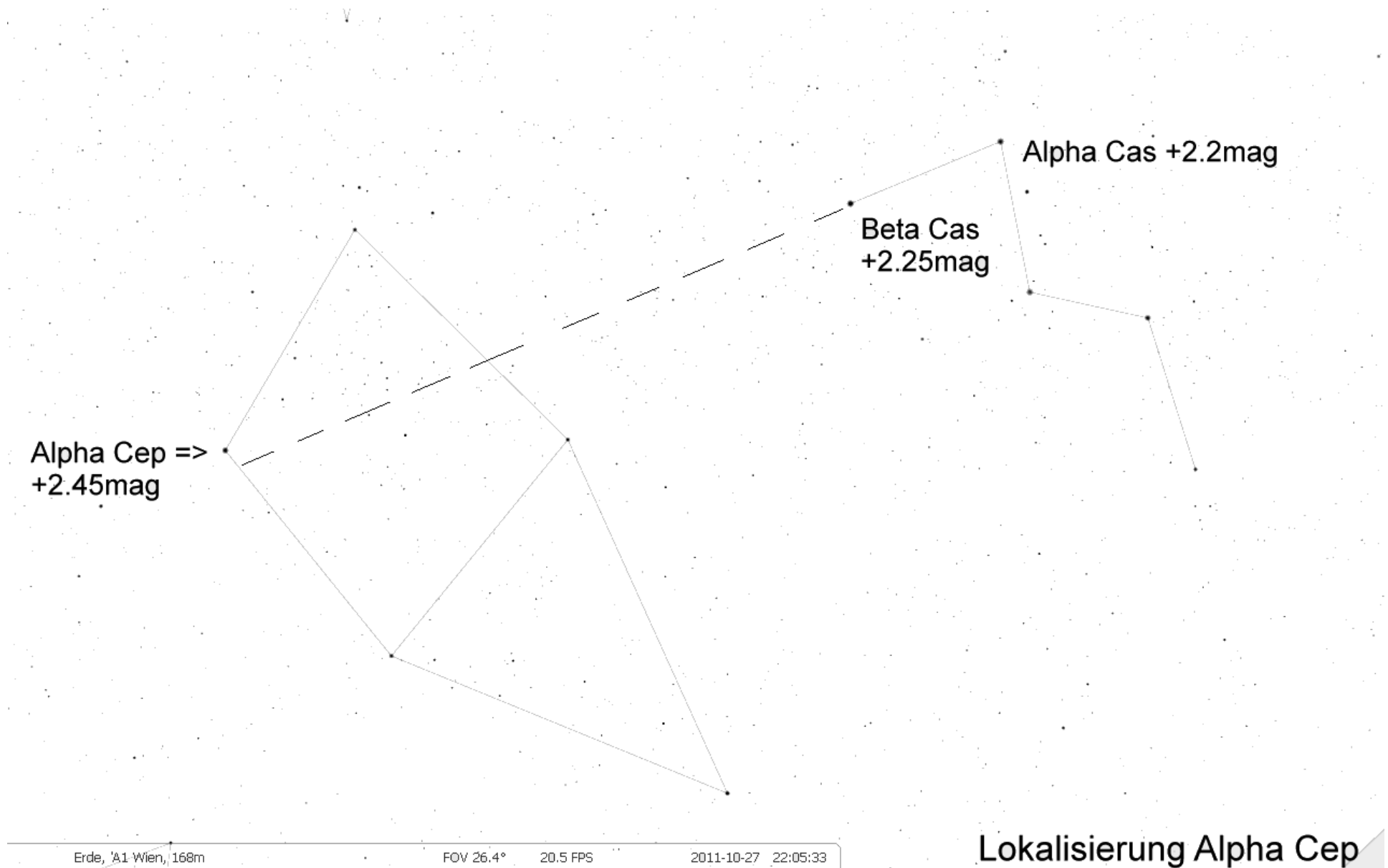
^  
Mu Cep +4.2mag  
Granatstern

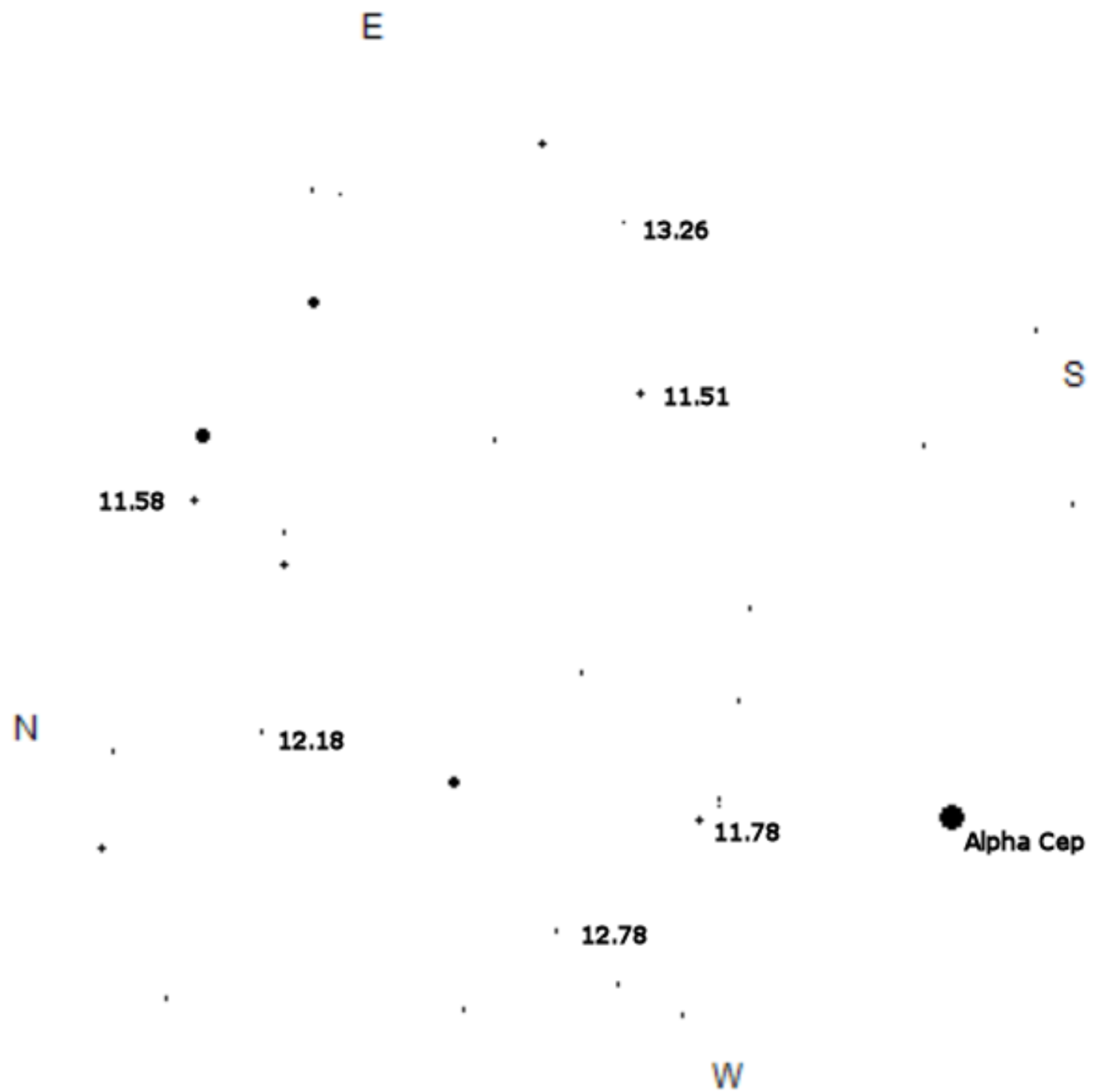
Alpha Cep  
+2.45mag

Iota Cep  
+3.5mag

Beta Cep  
+3.2mag

Gamma Cep  
+3.2mag

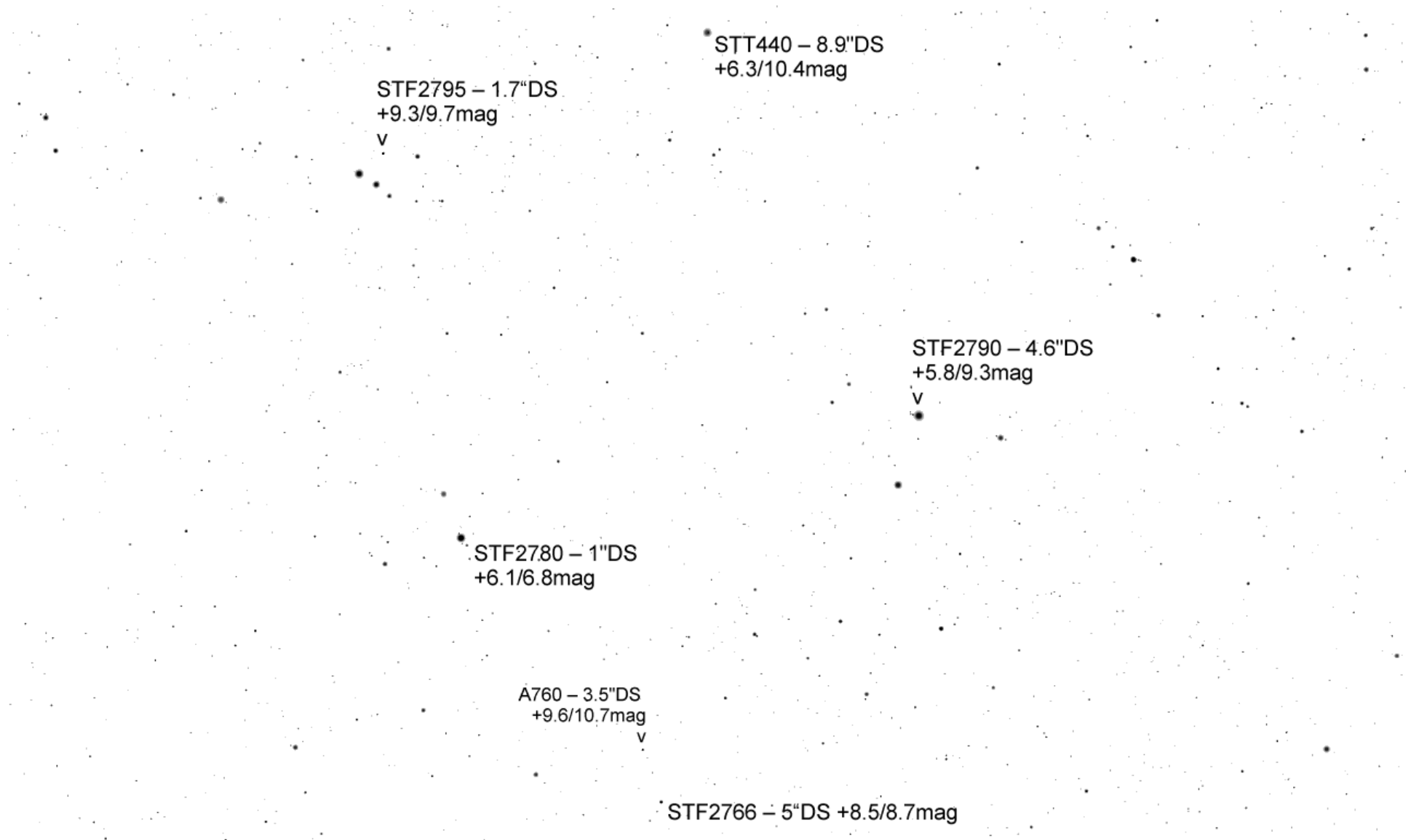


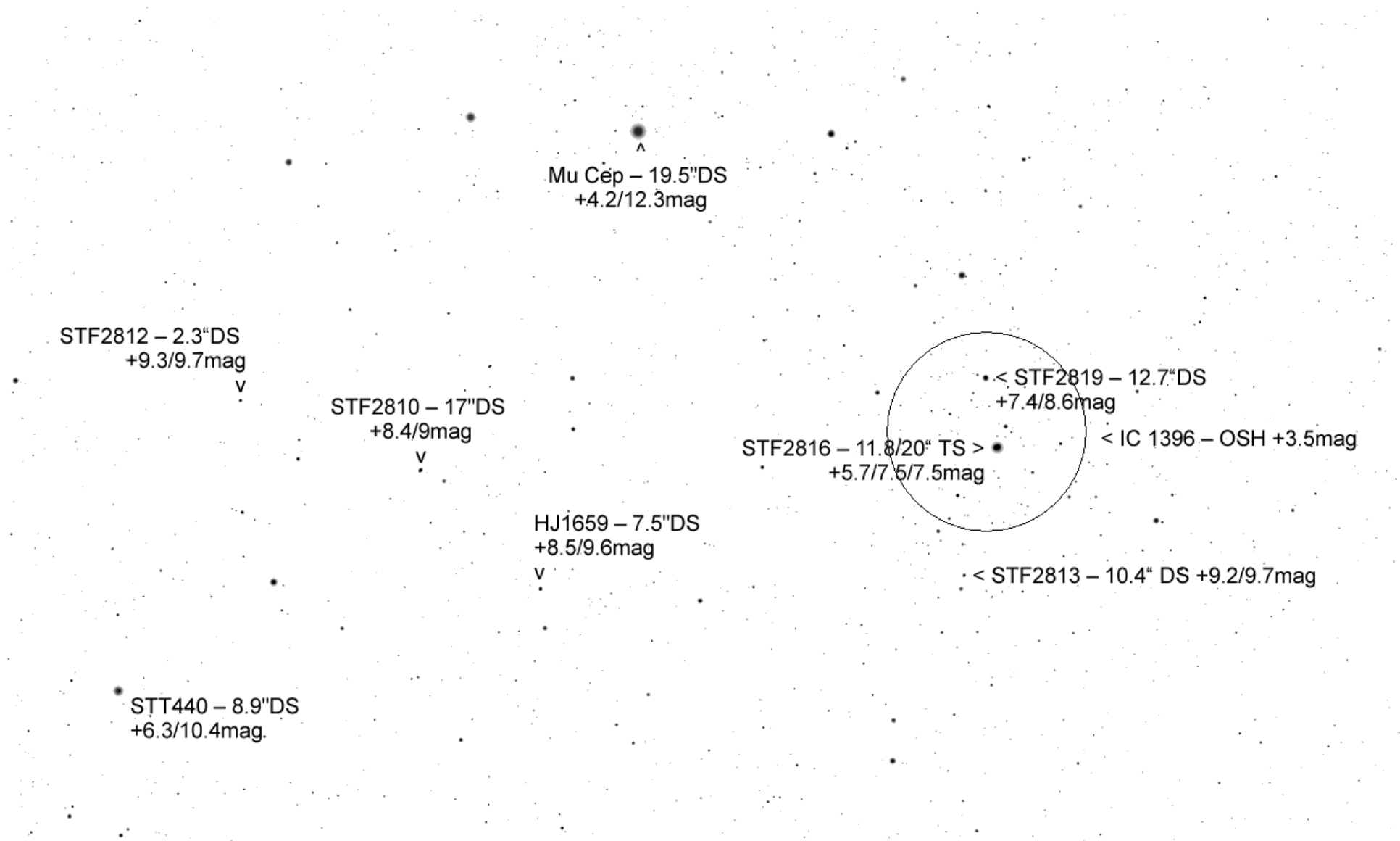


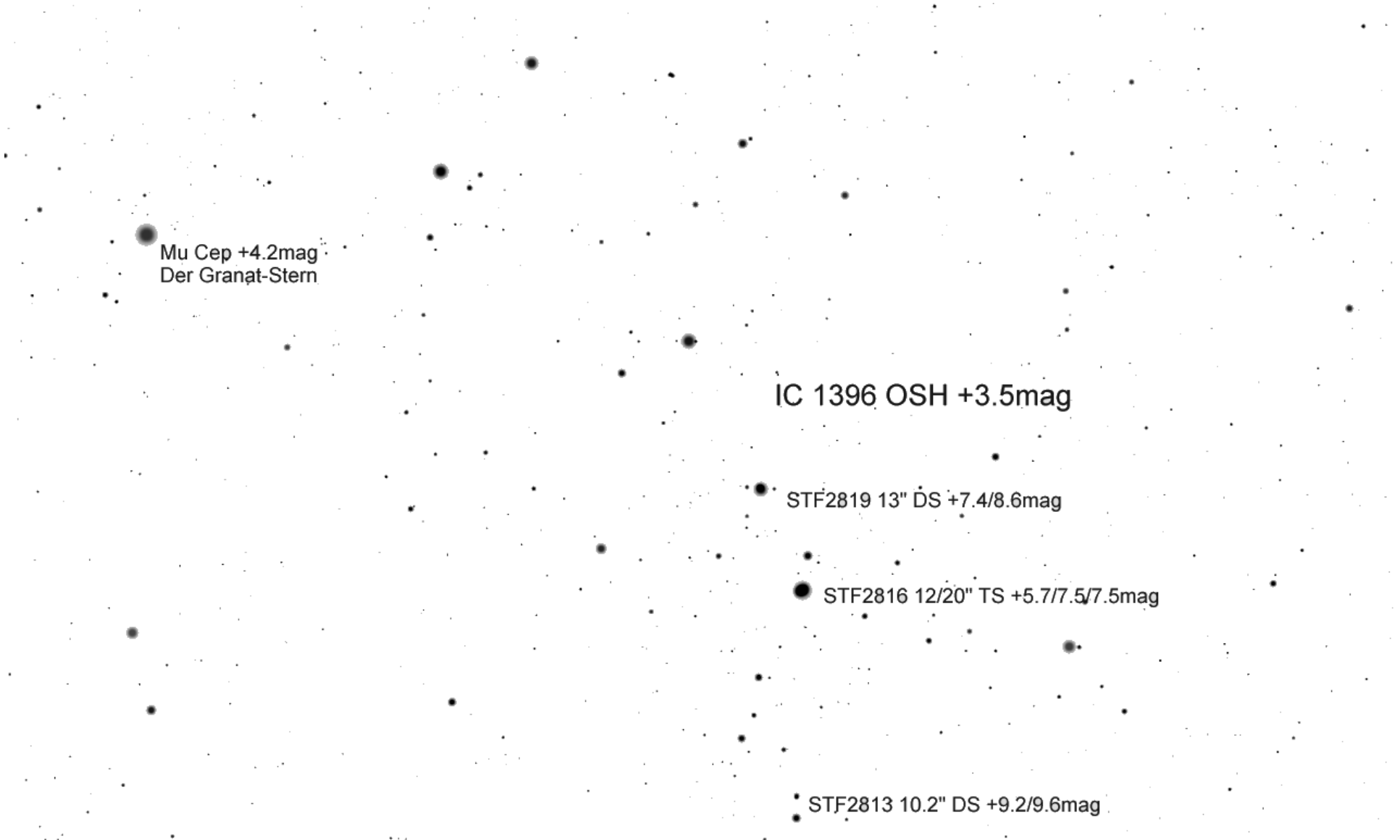
TML Alpha Cep per Ende Nov 15' FoV

Alpha Cep => ●  
+2.45mag

STF2795 1.5" DS  
+9.3/9.9mag  
v







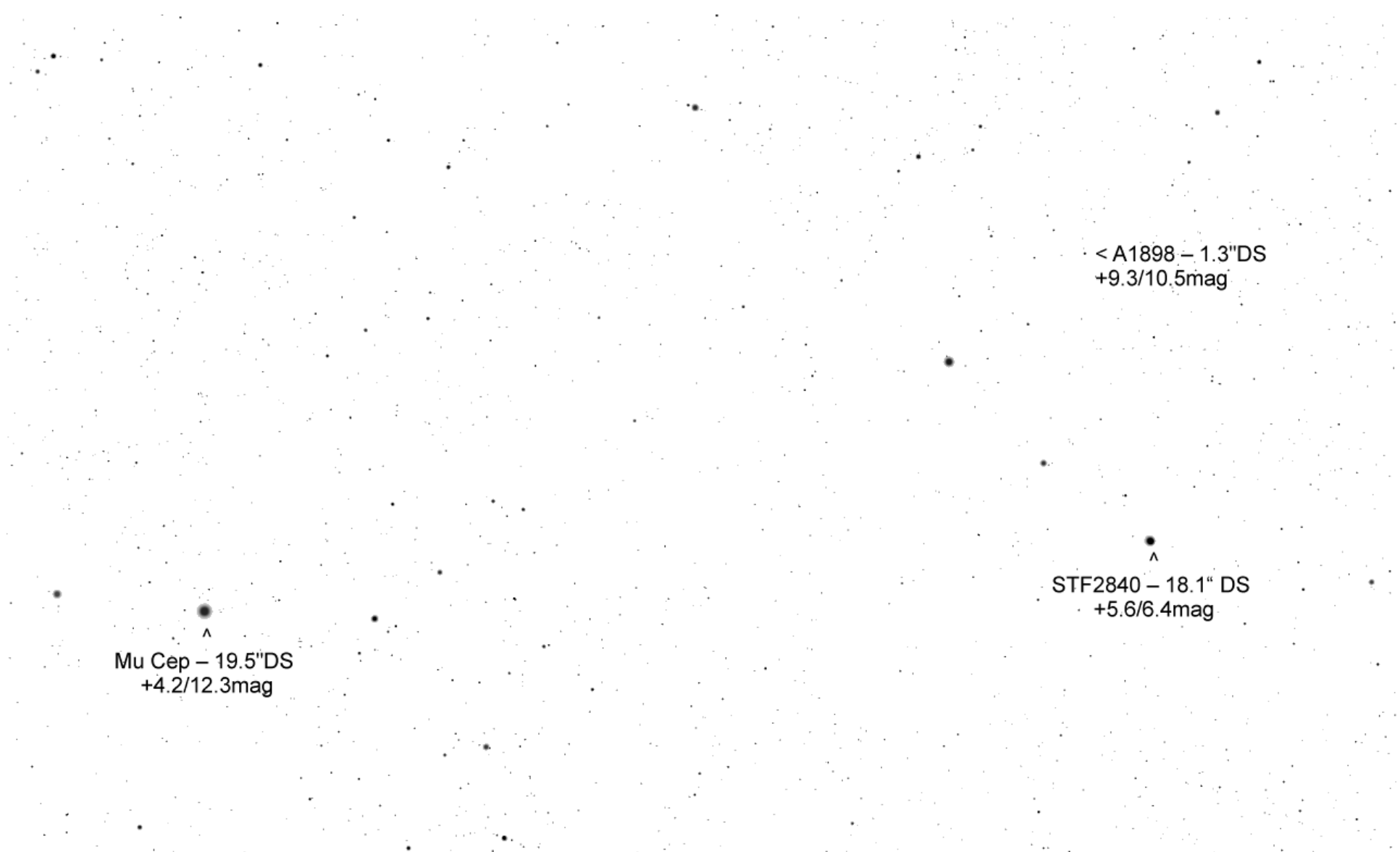
Mu Cep +4.2mag  
Der Granat-Stern

IC 1396 OSH +3.5mag

STF2819 13" DS +7.4/8.6mag

STF2816 12/20" TS +5.7/7.5/7.5mag

STF2813 10.2" DS +9.2/9.6mag



^  
Mu Cep – 19.5" DS  
+4.2/12.3mag

< A1898 – 1.3" DS  
+9.3/10.5mag

^  
STF2840 – 18.1" DS  
+5.6/6.4mag