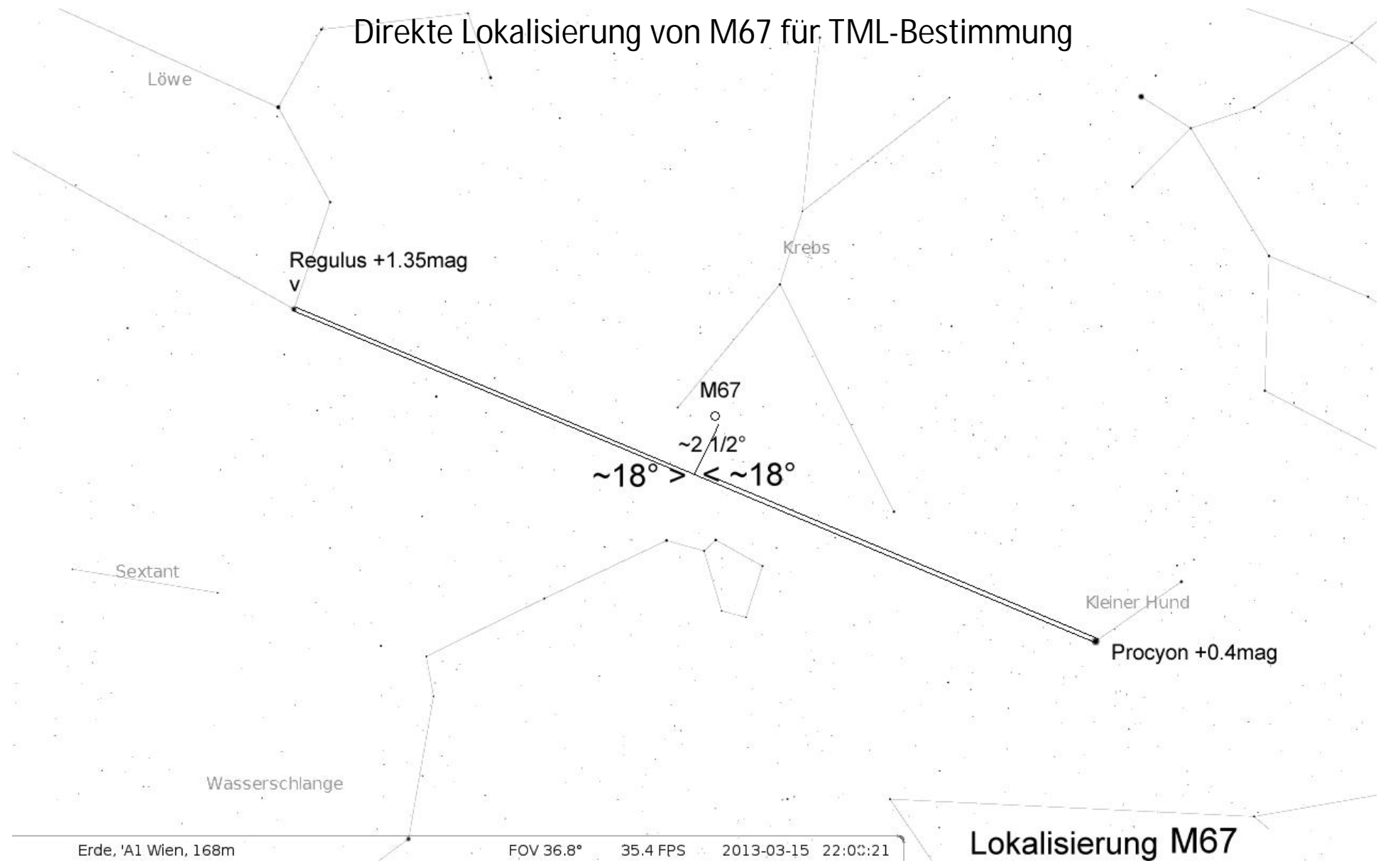
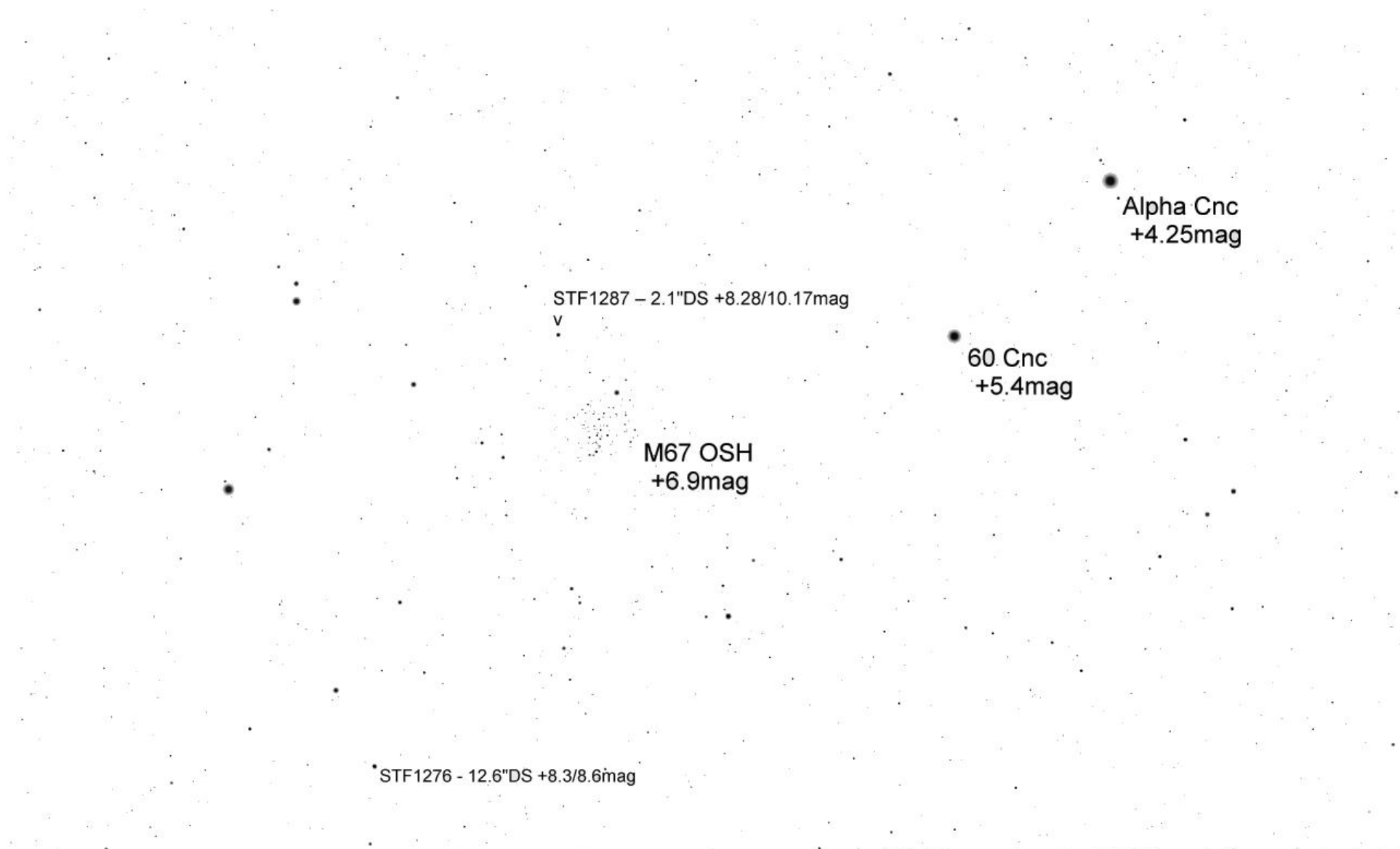
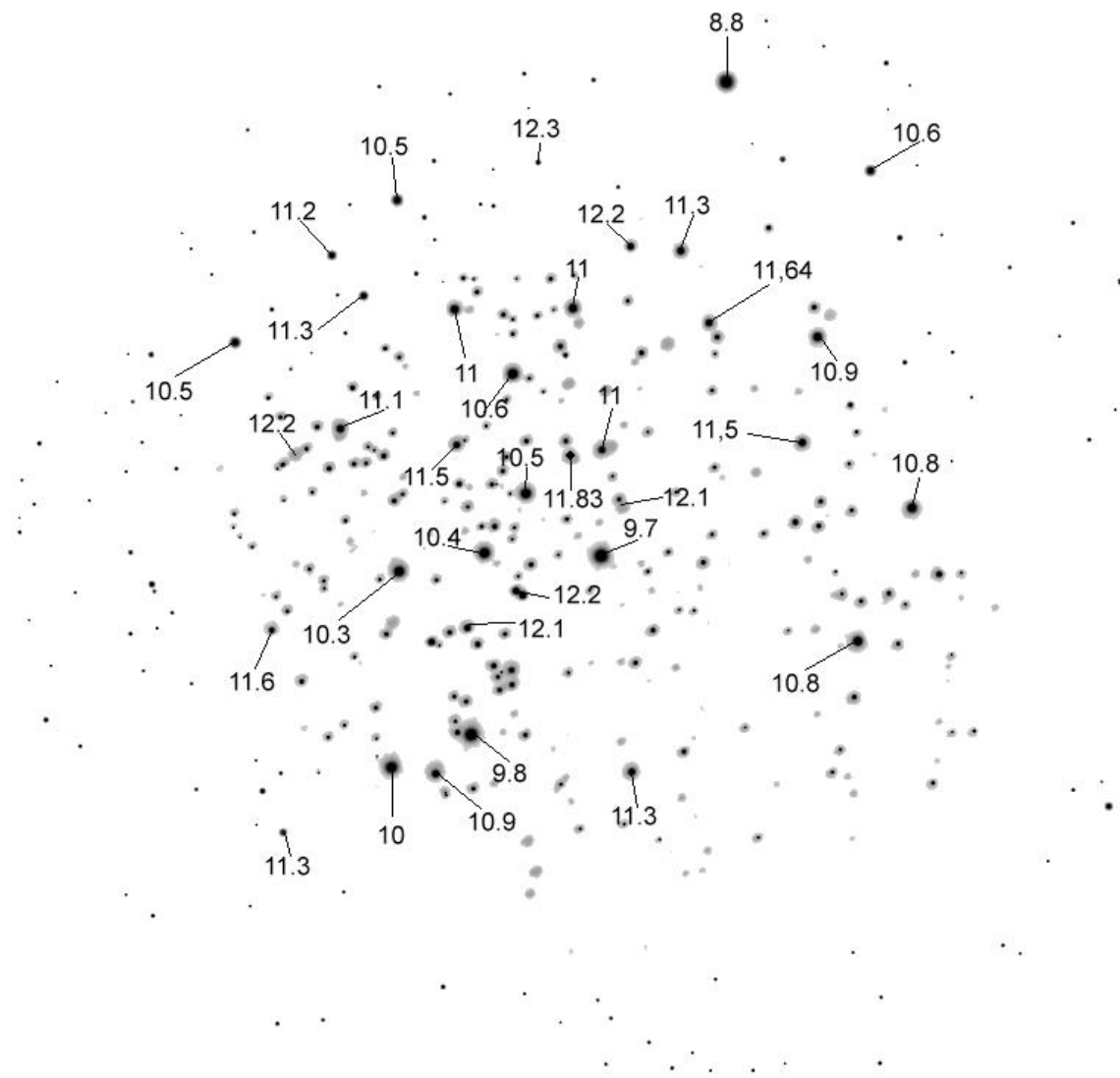


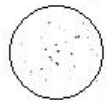
Direkte Lokalisierung von M67 für TML-Bestimmung







Ocular #4 : Nagler 3.5mm
 Ocular FL: 3.5mm
 Ocular aFOV: 82°
 Telescope #0 : Equ120
 Magnification: 257.1x
 FOV: 0.3188°



M44

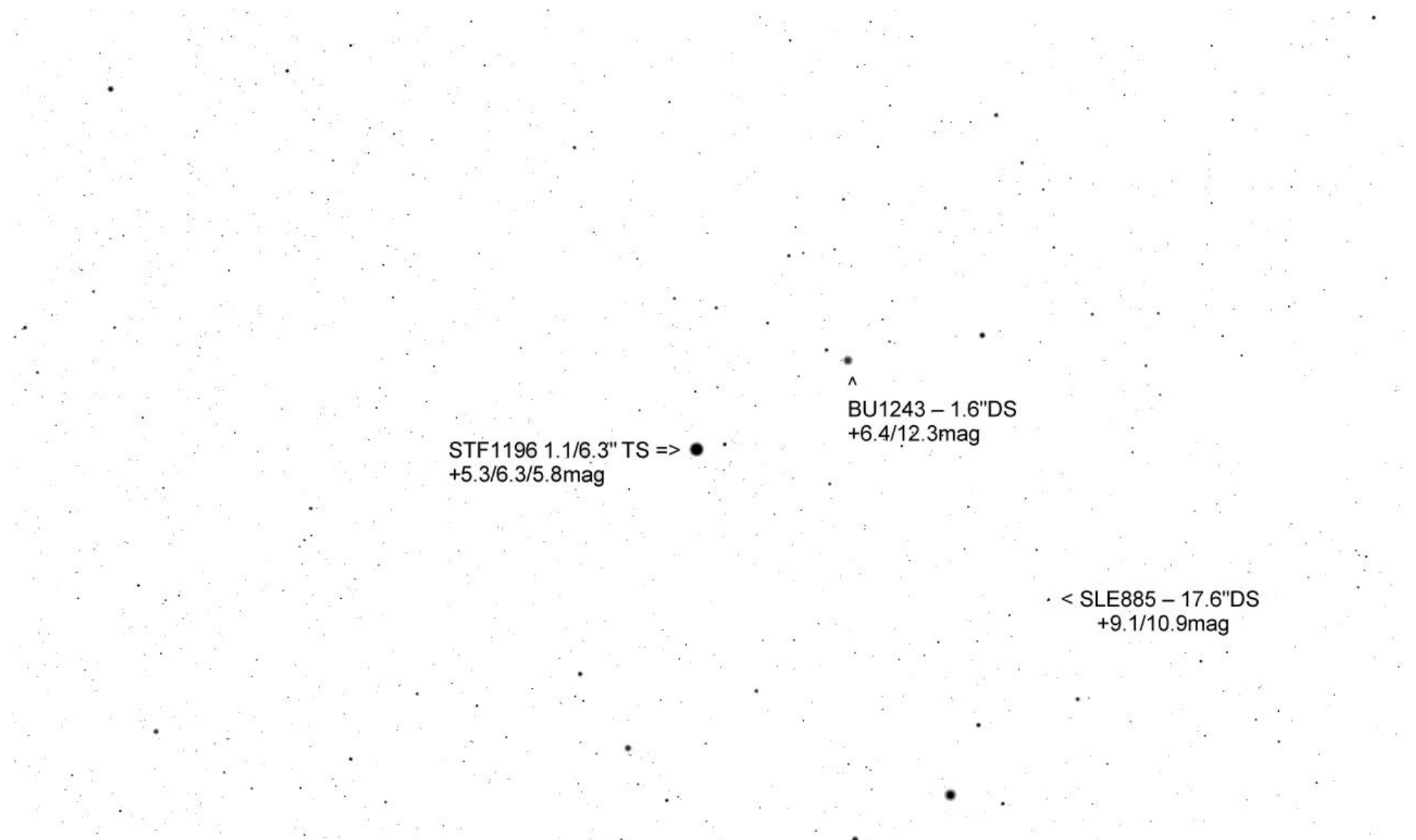
STF1196

12° 4' 31.00"

Pollux

4° 30'

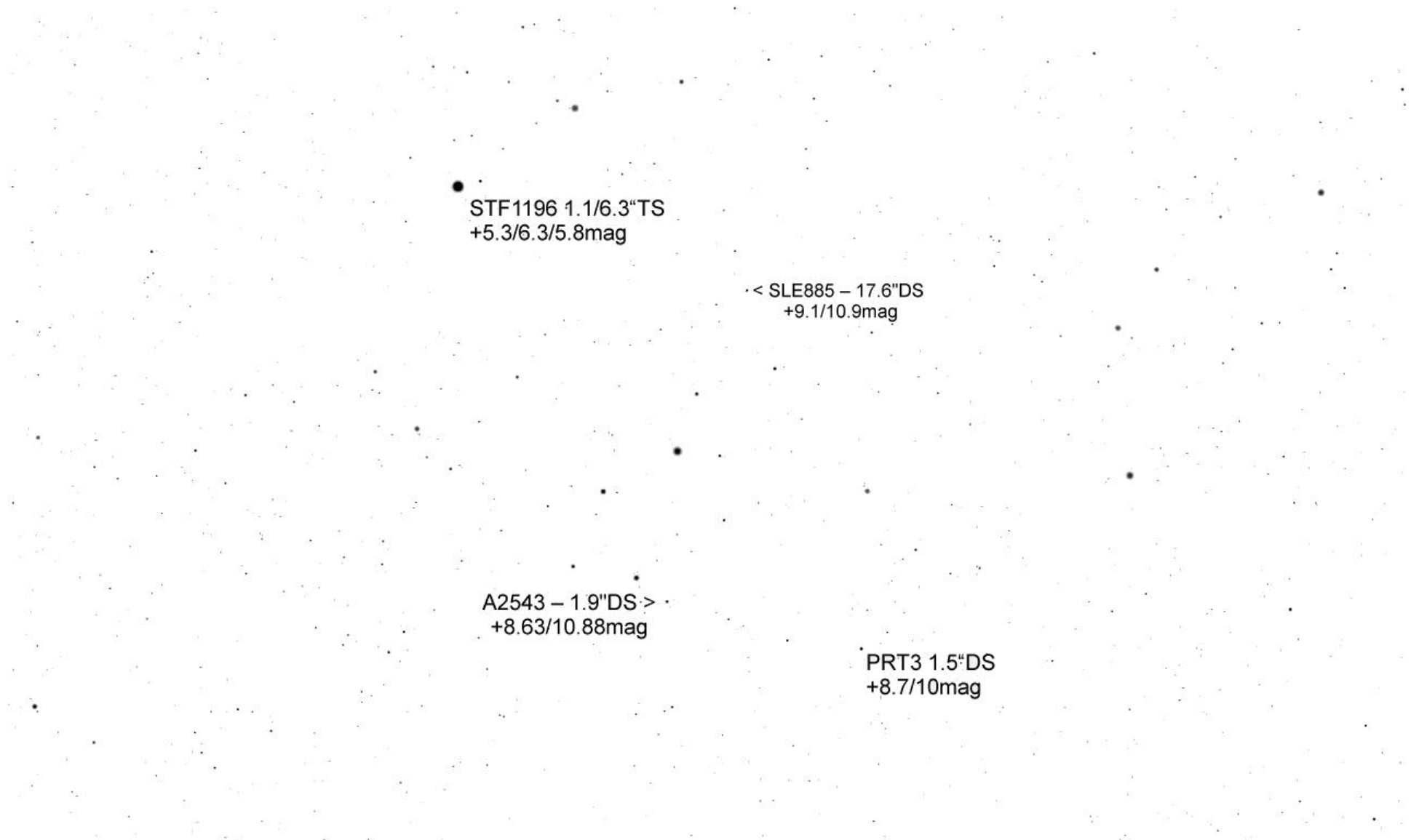
Castor



STF1196 1.1/6.3" TS => ●
+5.3/6.3/5.8mag

^
BU1243 – 1.6"DS
+6.4/12.3mag

< SLE885 – 17.6"DS
+9.1/10.9mag



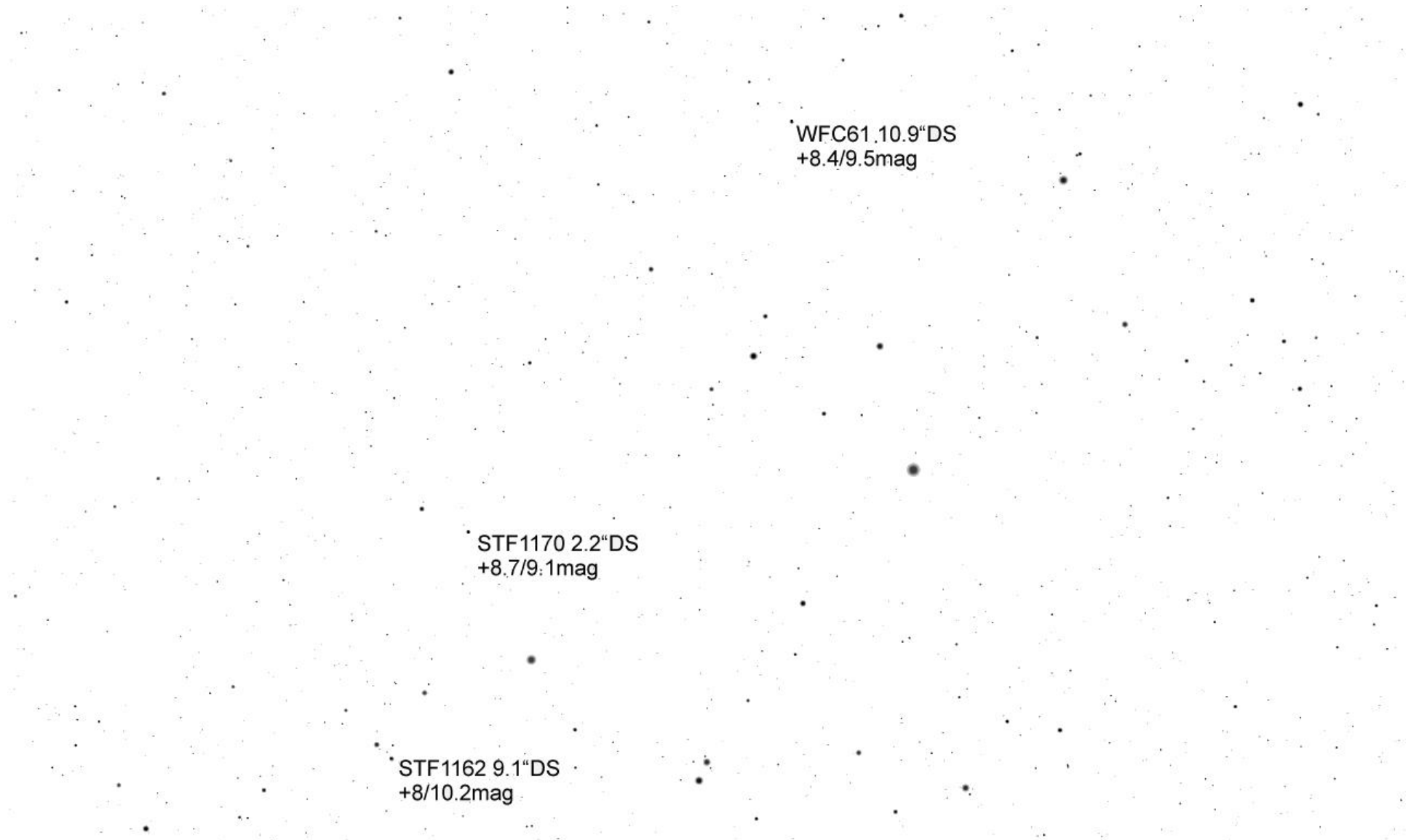


STF1173 - 10.6"DS
+8.5/9.9mag

PRT3 - 1.5"DS
+8.7/10mag

STF1173 10.6"DS
+8.5/9.9mag

WFC61 - 10.9"DS
+8.4/9.5mag



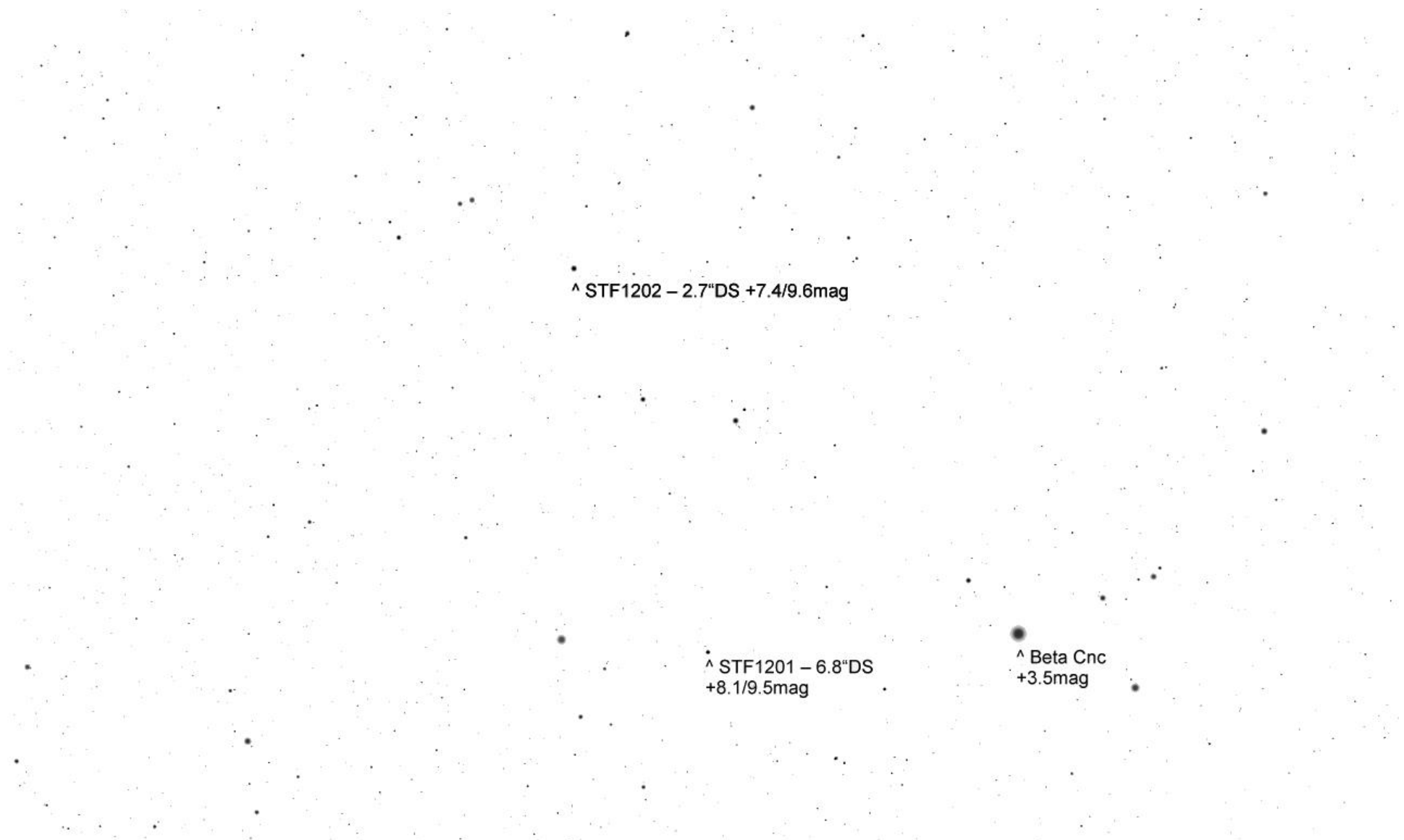


^
STF1162 – 9.1"DS
+8/10.2mag

^
J1002 – 2.3"DS
+9.3/9.5mag

^<= J376 – 2.1"DS
+9.2/9.6mag





^ STF1202 – 2.7"DS +7.4/9.6mag

^ STF1201 – 6.8"DS
+8.1/9.5mag

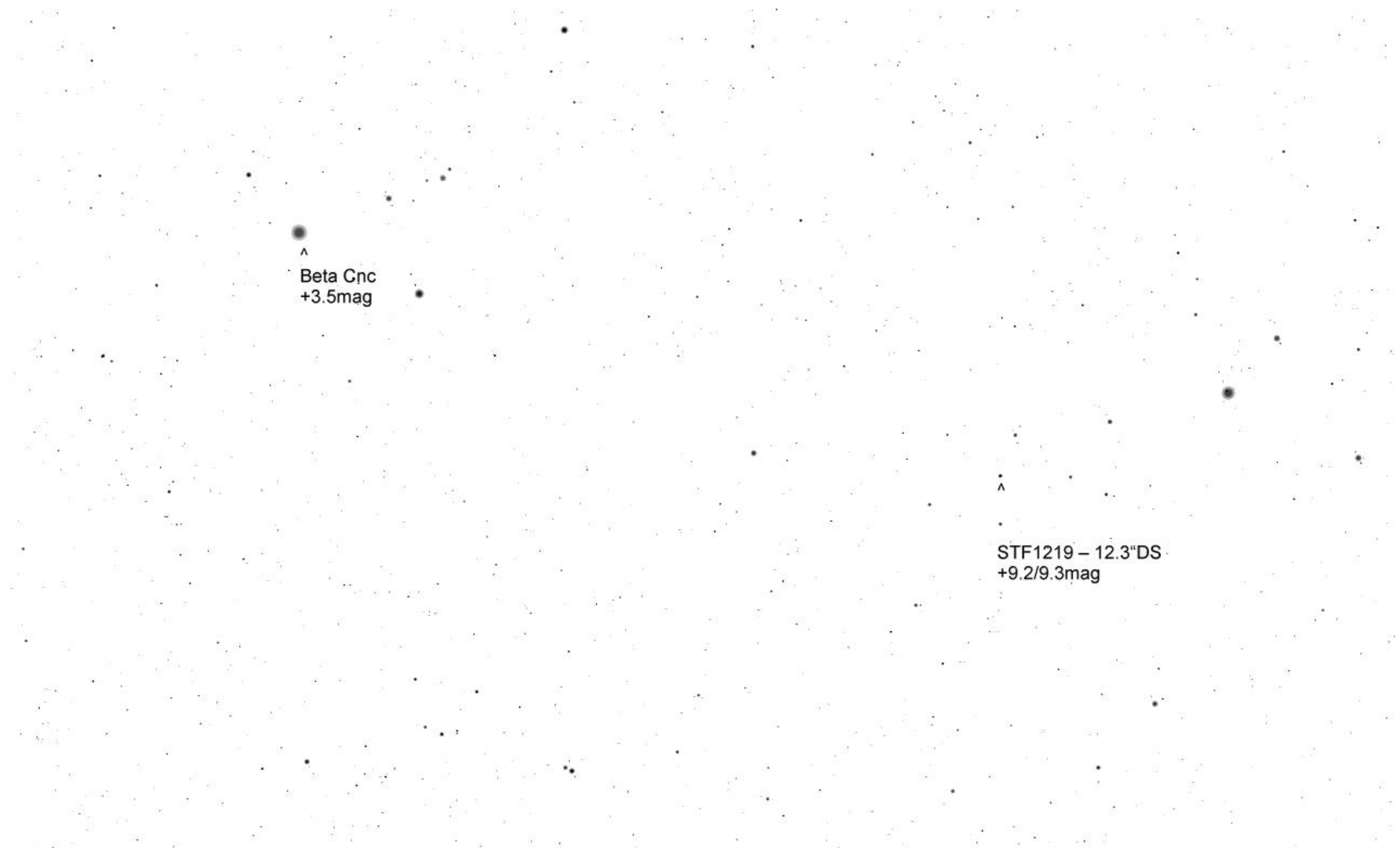
^ Beta Cnc
+3.5mag

STF1201 - 6.8"DS
+8.1/9.5mag

Beta Cnc
+3.5mag

J732 - 2.6"DS
+9.4/9.4mag

STF1181 - 5.4"DS +8.3/9.3mag





STF1219 - 12.3"DS
+9.2/9.3mag

STF1245 - 10"DS
+6/7.2mag

STF1246 – 10.9"DS
+8.7/9.9mag

STF1245 – 10"DS
+6/7.2mag

STF1276 – 12.5"DS ^
+8.3/8.6mag

STF1246 – 10.9"DS +8.7/9.9mag

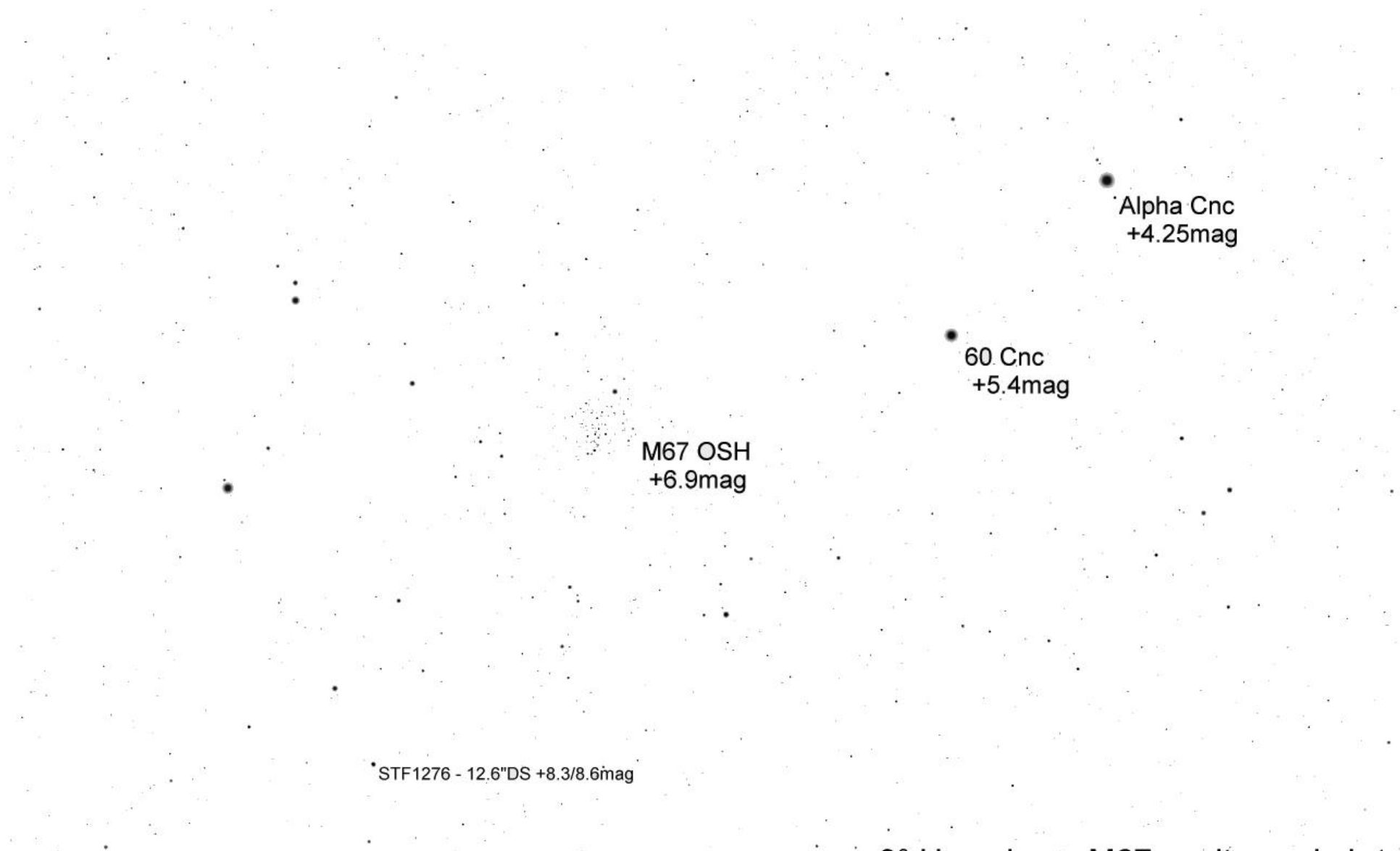
Erde, 'A1 Wien, 168m

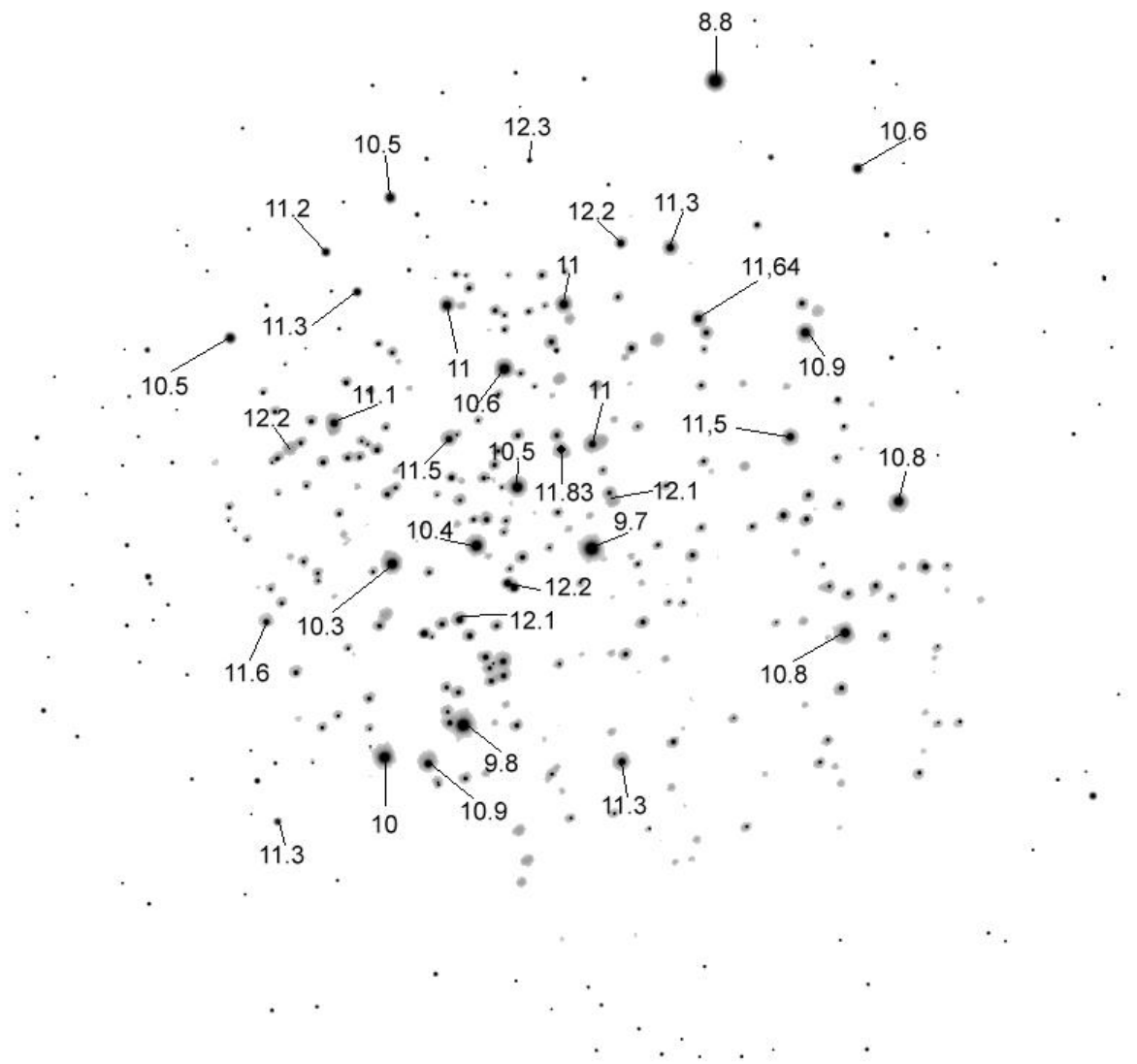
FOV 2.98°

15.2 FPS

2012-03-30 23:00:04

3° Umfeld STF1276 - seitenverkehrt



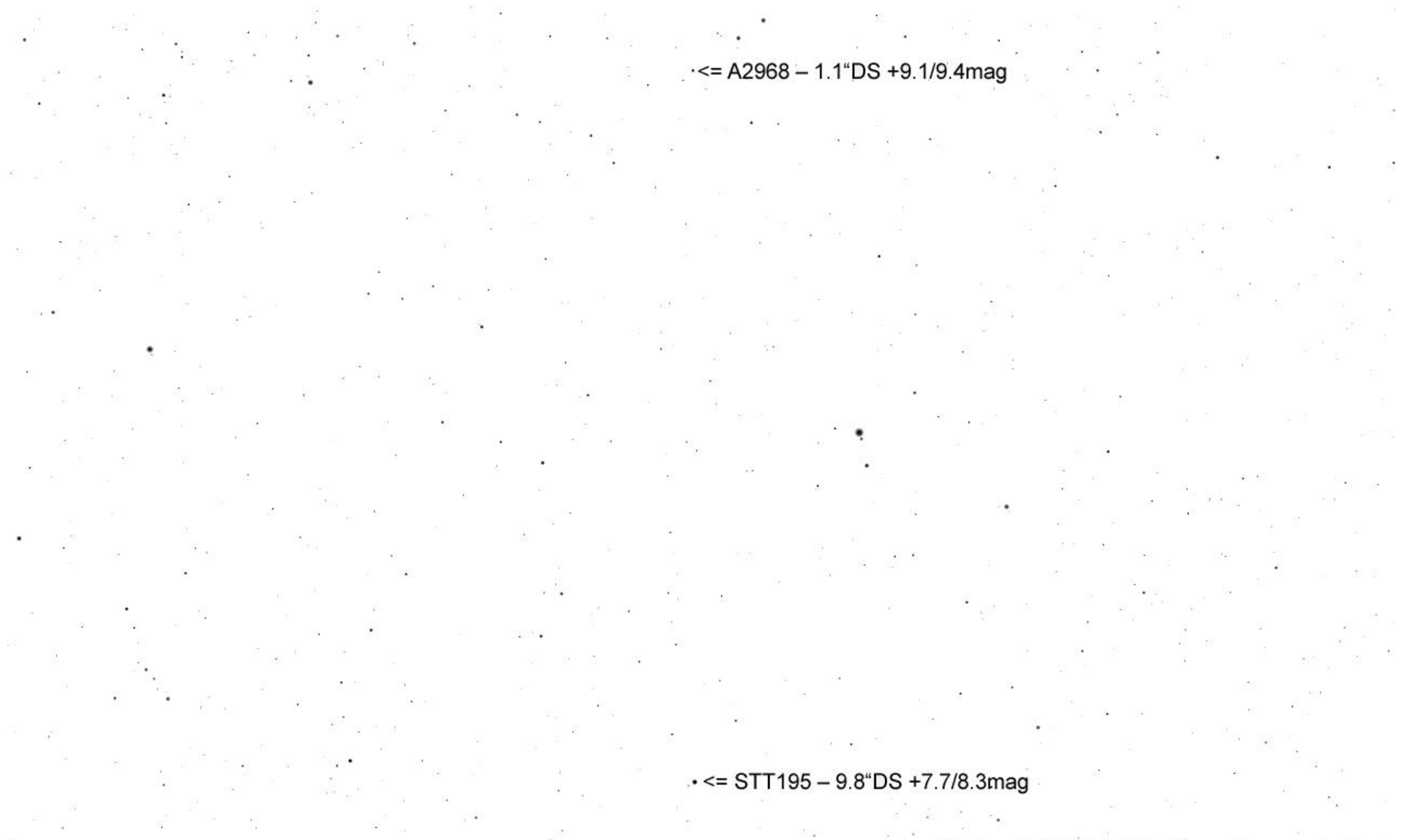


Ocular #4 : Nagler 3.5mm
Ocular FL: 3.5mm
Ocular aFOV: 82°
Telescope #0 : Equ120
Magnification: 257.1x
FOV: 0.3188°



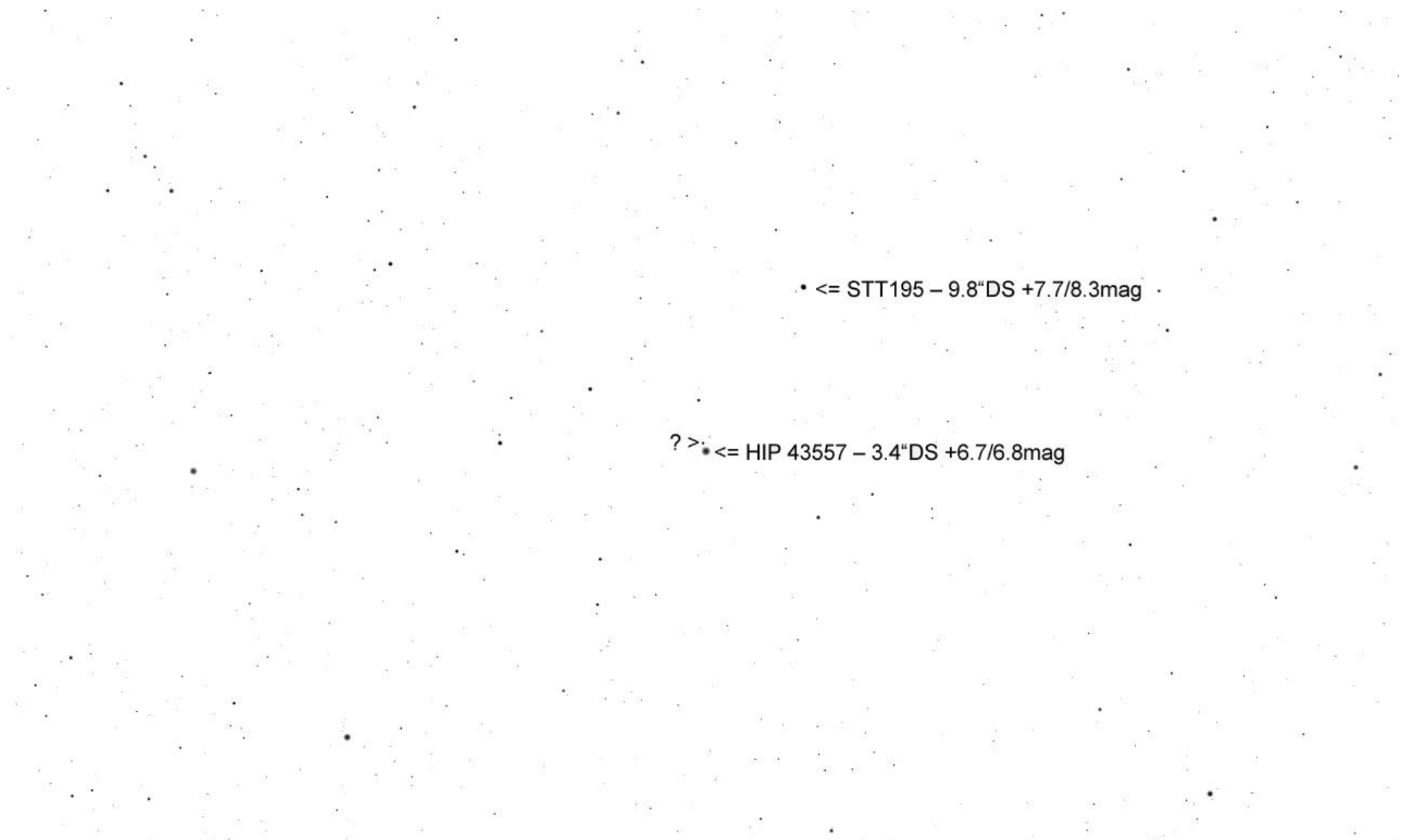
M67 - OSH
+6.9mag

· <= A2968 - 1.1"DS +9.1/9.4mag



•<= A2968 – 1.1"DS +9.1/9.4mag

•<= STT195 – 9.8"DS +7.7/8.3mag



• <= STT195 - 9.8"DS +7.7/8.3mag

? > • <= HIP 43557 - 3.4"DS +6.7/6.8mag