

M44

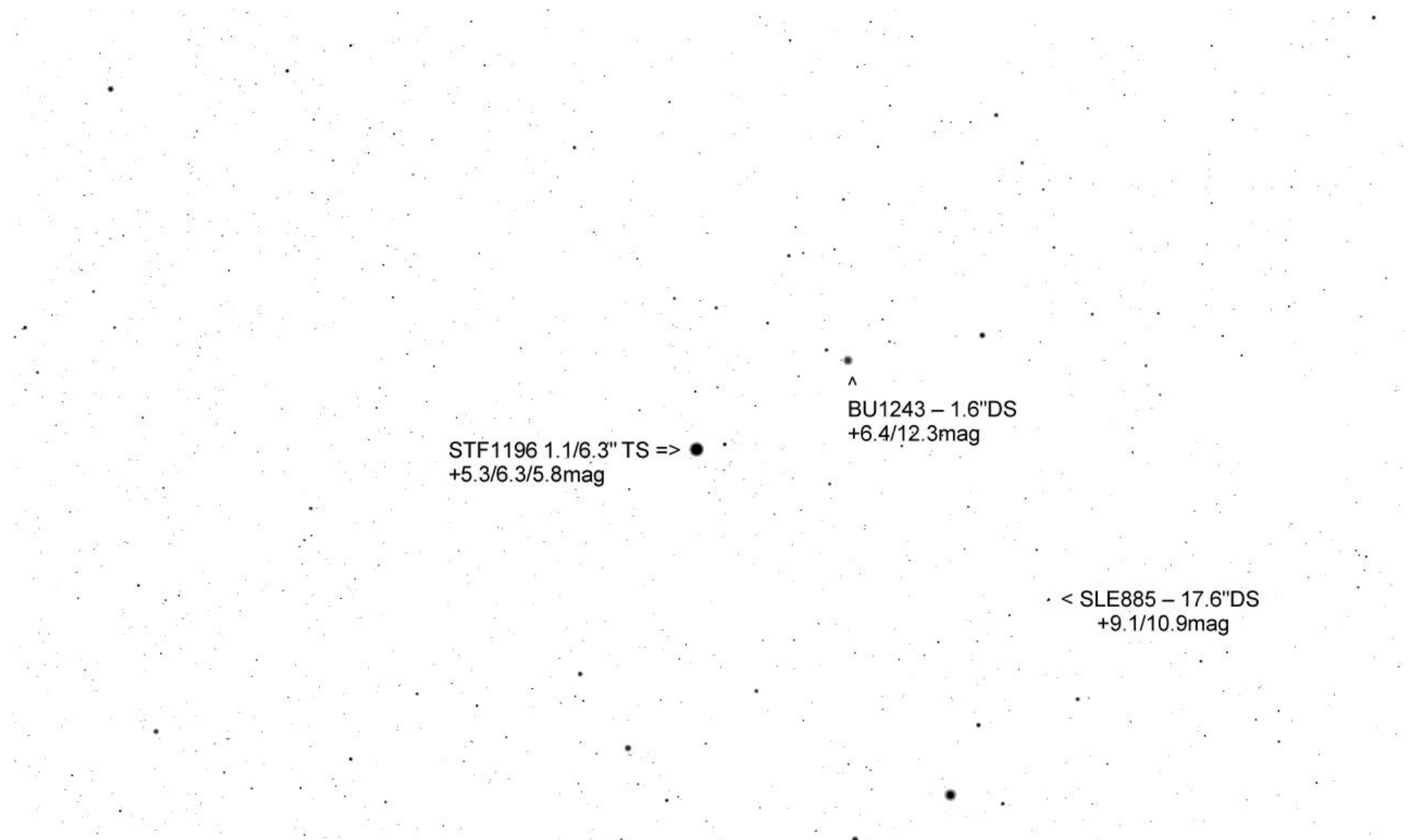
STF1196

12° 4' 31.00"

Pollux

4° 30'

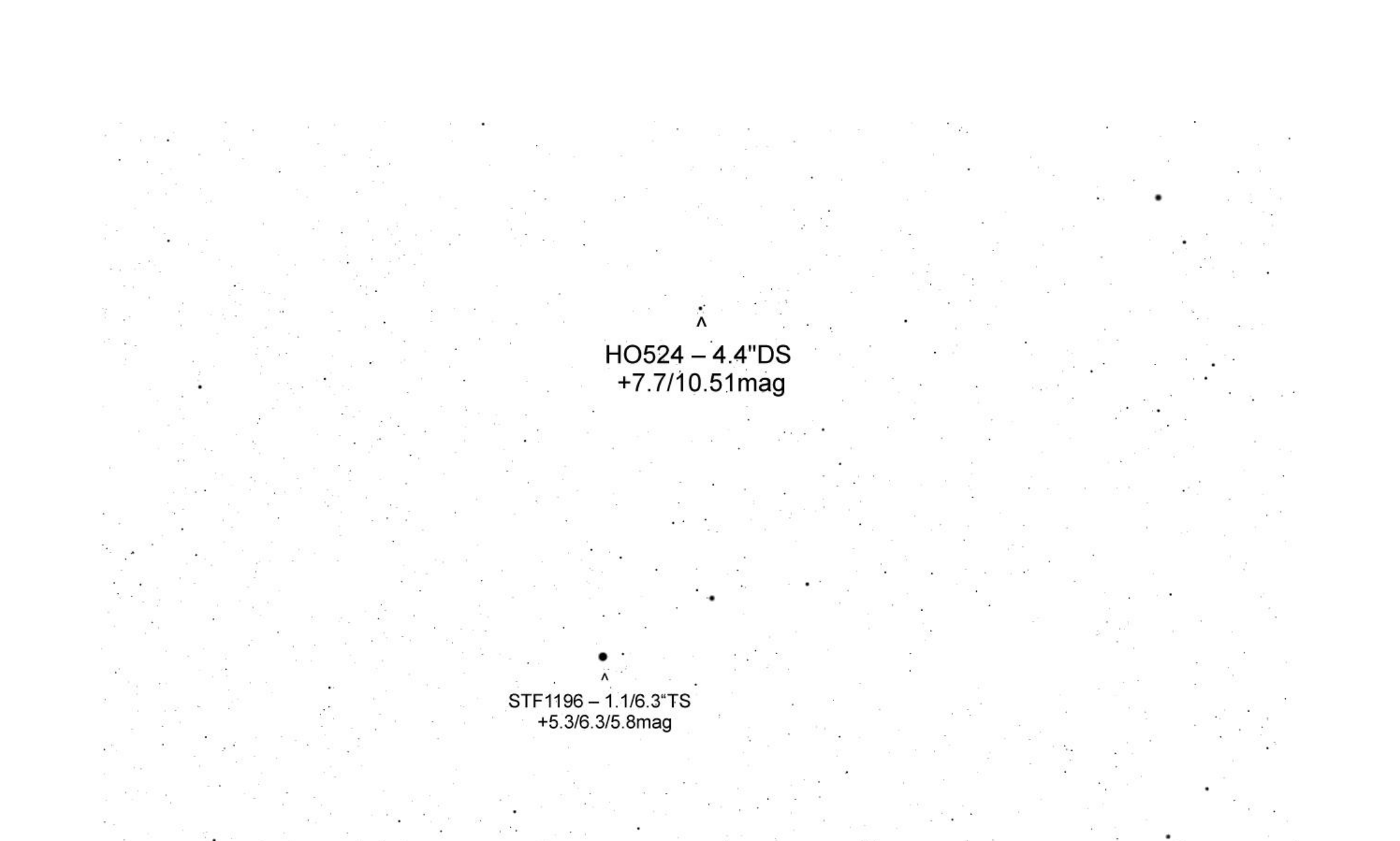
Castor



STF1196 1.1/6.3" TS => ●
+5.3/6.3/5.8mag

^
BU1243 – 1.6"DS
+6.4/12.3mag

< SLE885 – 17.6"DS
+9.1/10.9mag



^
HO524 – 4.4"DS
+7.7/10.51mag

●
^
STF1196 – 1.1/6.3"TS
+5.3/6.3/5.8mag

STT191 – 38.1"DS
+7.41/8.62mag

HO525 – 0.4"DS +9.83/9.89mag >

HJ444 – 37.1"DS
+8.53/10.27mag

HO524 – 4.4"DS +7.7/10.51mag

HJ448 – 29.4"DS
+9.12/10.8mag

v

M44 –
OSH +3.1mag

STF1249 – 25.1"DS >
+10.8/11mag

^
STT191 – 38.1"DS
+7.41/8.62mag

<= STF1269 11.5"DS
+10/10.1mag

M44 - Praesepe
OSH +3.1mag

STF1254 20.3/63.3/82.6"QS =>
+6.4/7.7/9.4/10.4mag

STF1249 25.1"DS =>
+10.8/11mag

<= S571 45.2/92.9"TS,
+6.7/6.9/7.2mag

BU584 - 1"DS +7.31/12.2mag

Delta Cnc
+3.9mag

STF1269 11.5"DS
+10/10.1mag

BRT2392 - 3.7"DS +9.2/9.3mag

AG338 - 1.7"DS
+9/9.2mag

AG338
HIP 43751 - 1.7"DS
+9/9.2mag

<= STF1300 5"DS +9.5/9.7mag

STF1283 16.5"DS
+7.7/8.4mag

< HEI148 - 3.5"DS +8.9/11.5mag



HDS1328 - 5.2"DS +9.54/11.78mag ^

STF1322 1.8"DS
+8.3/8.7mag

STF1325 - 17.3"DS ^
+9.36/11.7mag

^
STF1317 7.8"DS +8.5/9.9mag