

<= STF1269 11.5"DS
+10/10.1mag

M44 - Praesepe
OSH +3.1mag

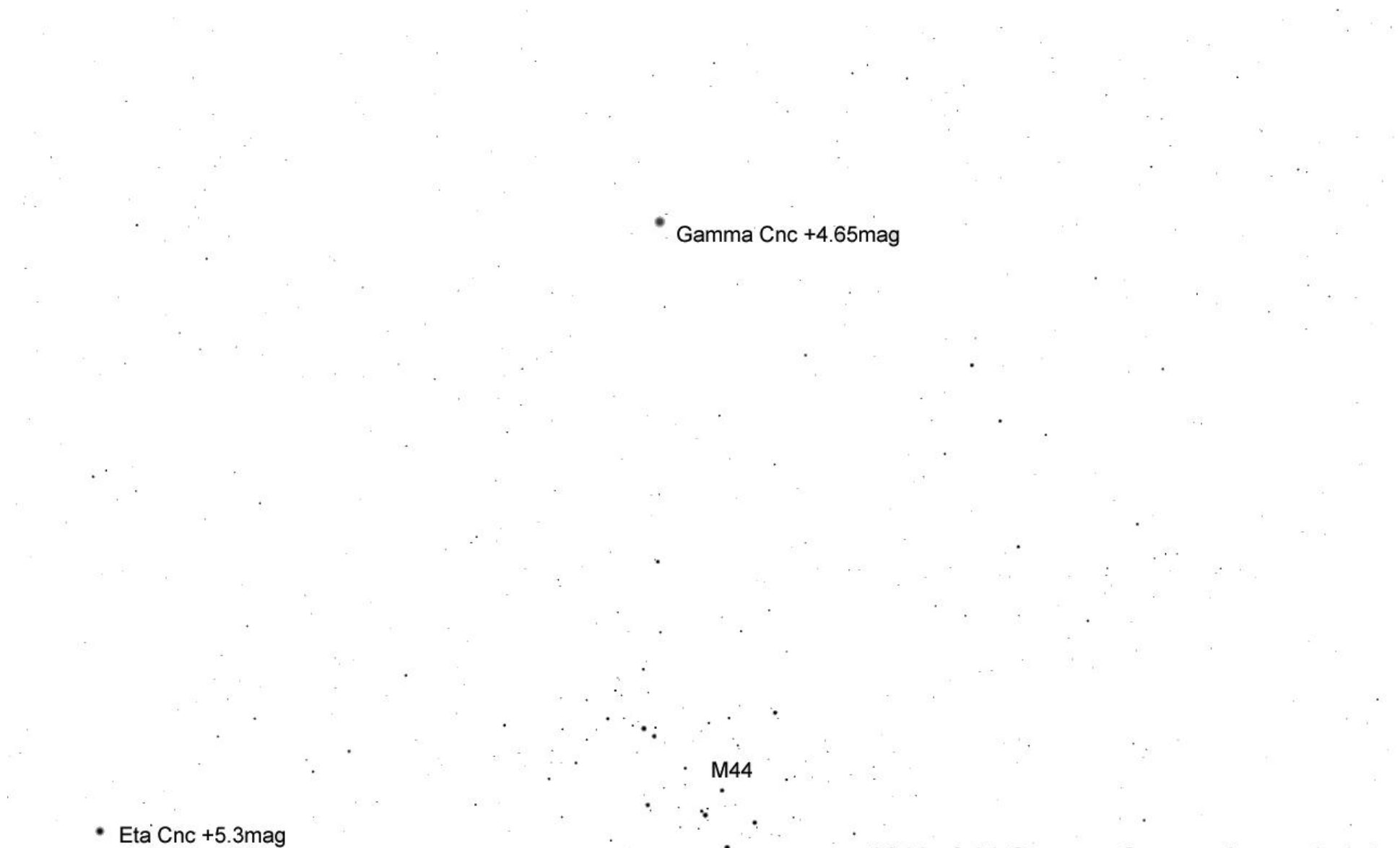
STF1254 20.3/63.3/82.6"QS =>
+6.4/7.7/9.4/10.4mag

STF1249 25.1"DS =>
+10.8/11mag

<= S571 45.2/92.9"TS,
+6.7/6.9/7.2mag

BU584 - 1"DS +7.31/12.2mag

Delta Cnc
+3.9mag



• Eta Cnc +5.3mag

• Gamma Cnc +4.65mag

M44

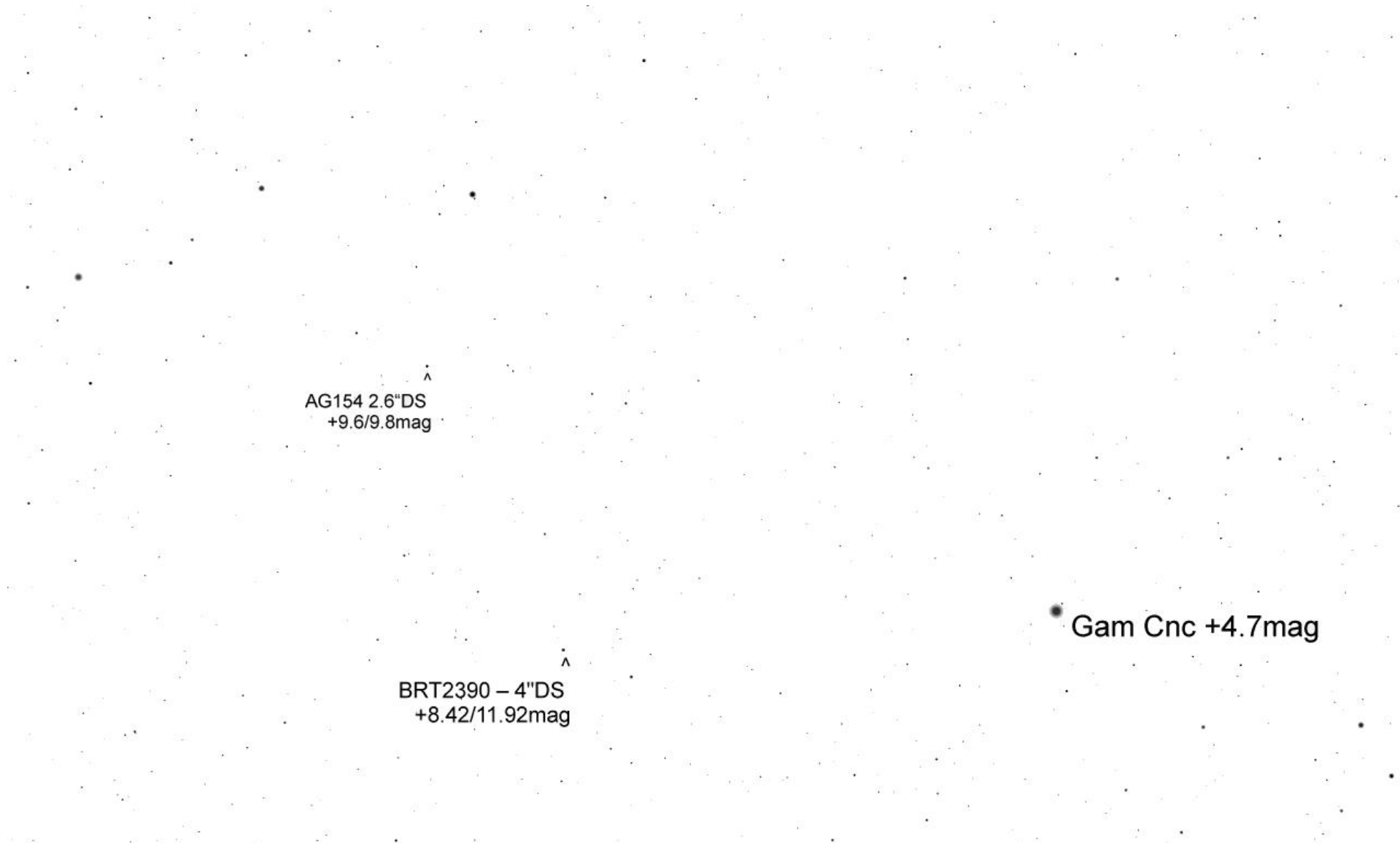
Erde, Wien, 168m

FOV 2.8°

15.3 FPS

2011-03-03 23:11:06

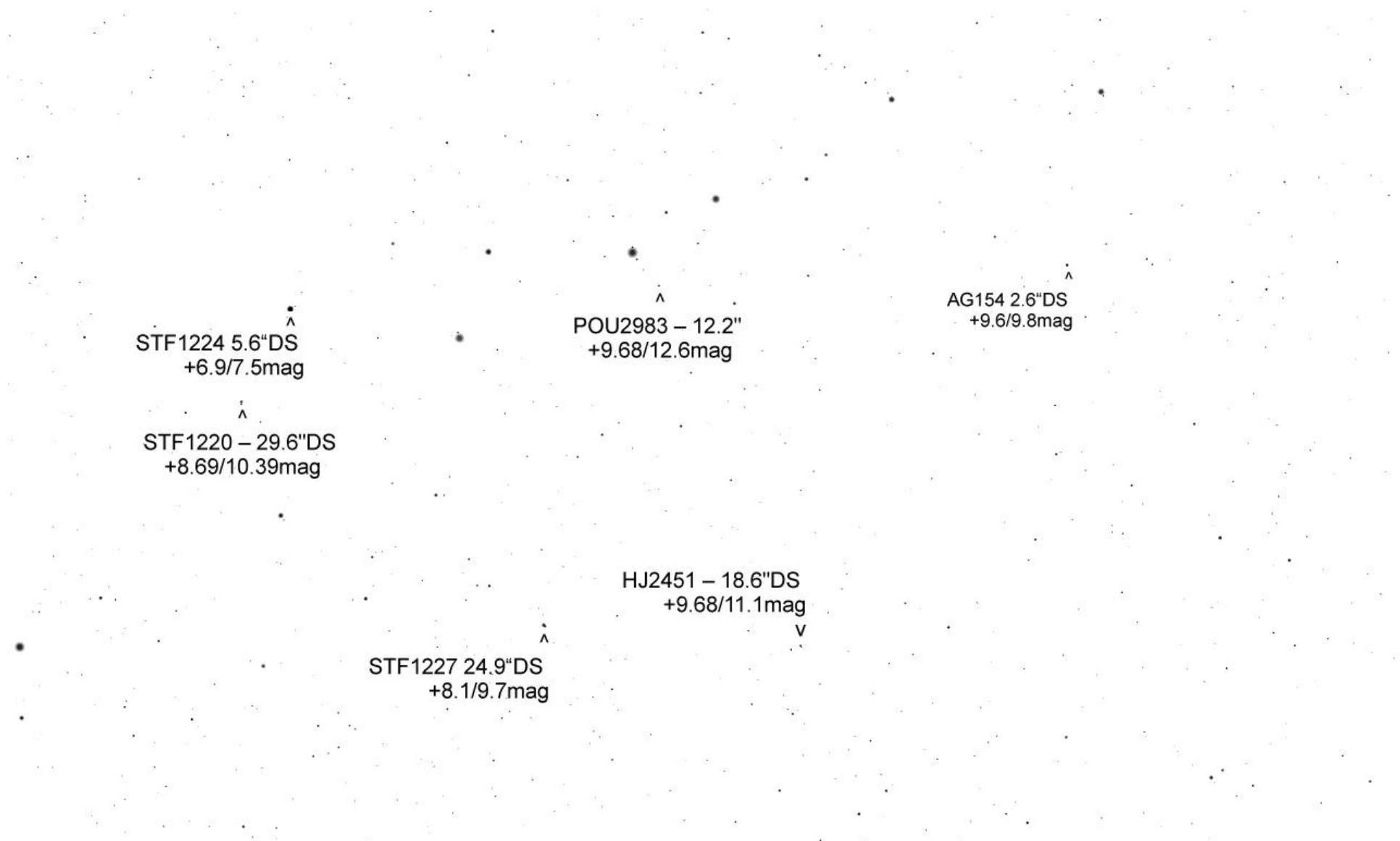
3° Umfeld Gamma Cnc - seitenverkehrt



AG154 2.6"DS
+9.6/9.8mag

BRT2390 - 4"DS
+8.42/11.92mag

Gam Cnc +4.7mag



STF1224 5.6"DS
+6.9/7.5mag

STF1220 – 29.6"DS
+8.69/10.39mag

POU2983 – 12.2"
+9.68/12.6mag

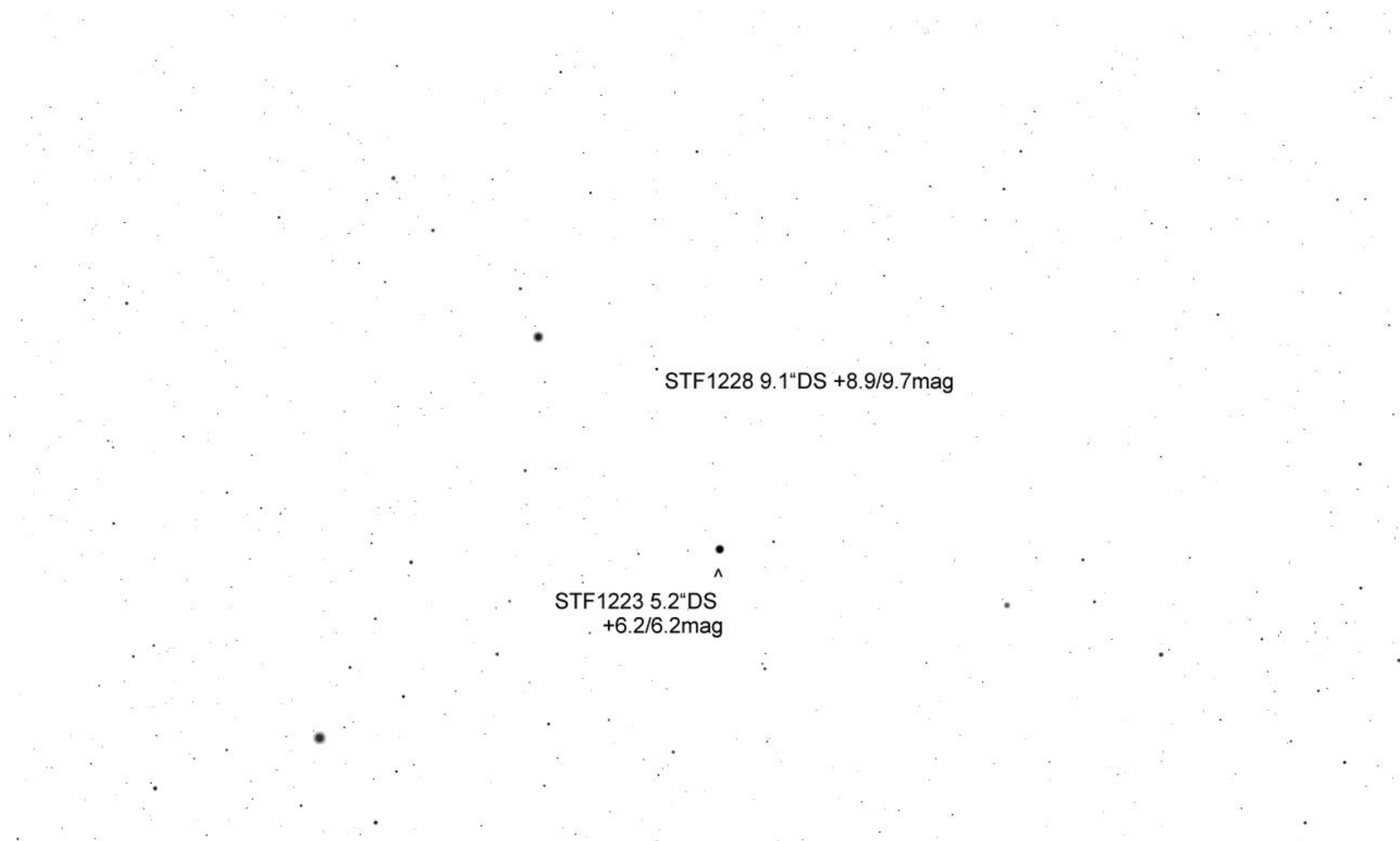
AG154 2.6"DS
+9.6/9.8mag

HJ2451 – 18.6"DS
+9.68/11.1mag

STF1227 24.9"DS
+8.1/9.7mag

STF1223 5.2"DS
+6.2/6.2mag

STF1224 5.6"DS
+6.9/7.5mag



STF1228 9.1"DS +8.9/9.7mag

STF1223 5.2"DS
+6.2/6.2mag