

<= STF1269 11.5"DS
+10/10.1mag

M44 - Praesepe
OSH +3.1mag

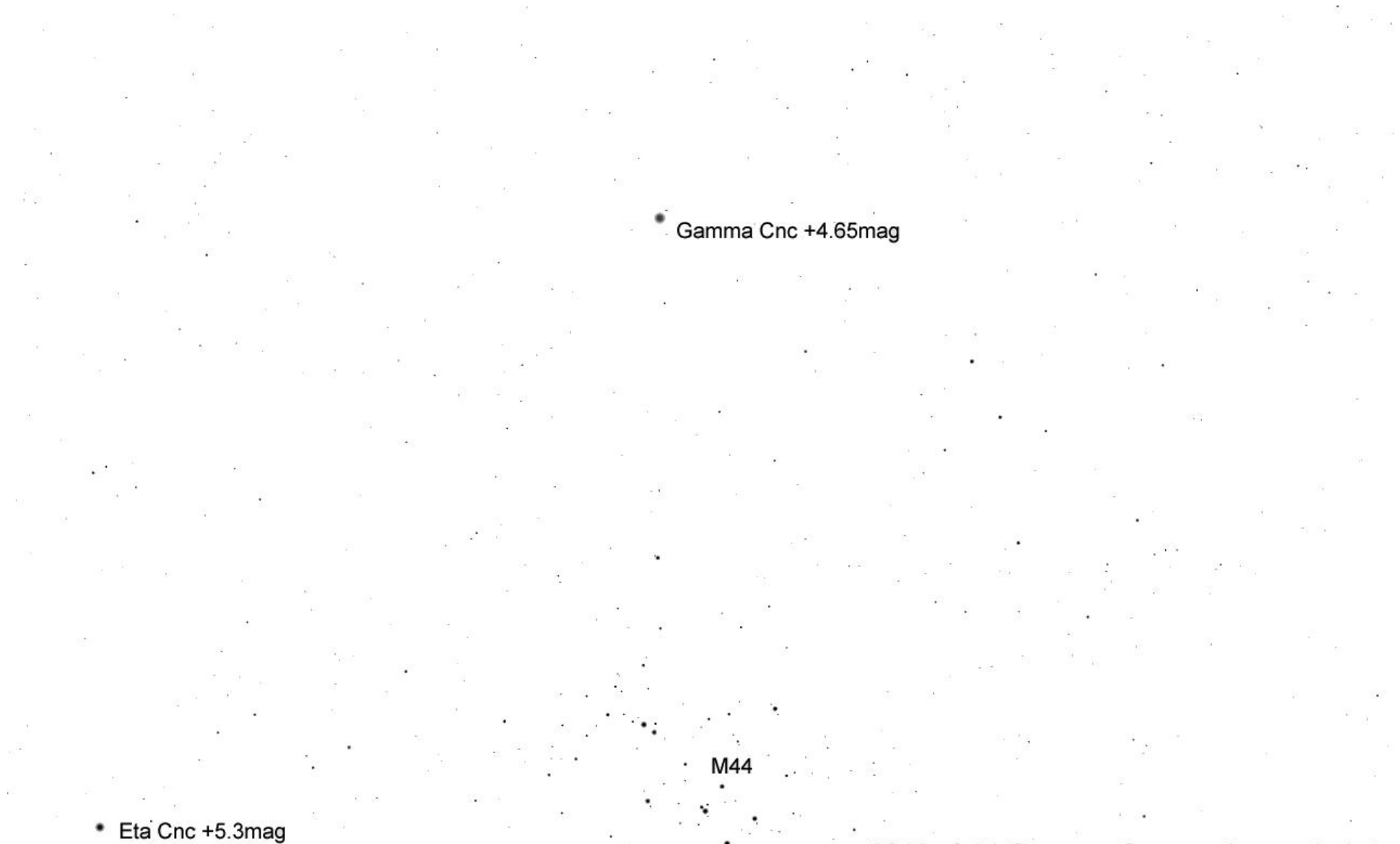
STF1254 20.3/63.3/82.6"QS =>
+6.4/7.7/9.4/10.4mag

STF1249 25.1"DS =>
+10.8/11mag

<= S571 45.2/92.9"TS,
+6.7/6.9/7.2mag

BU584 - 1"DS +7.31/12.2mag

Delta Cnc
+3.9mag



• Eta Cnc +5.3mag

• Gamma Cnc +4.65mag

M44

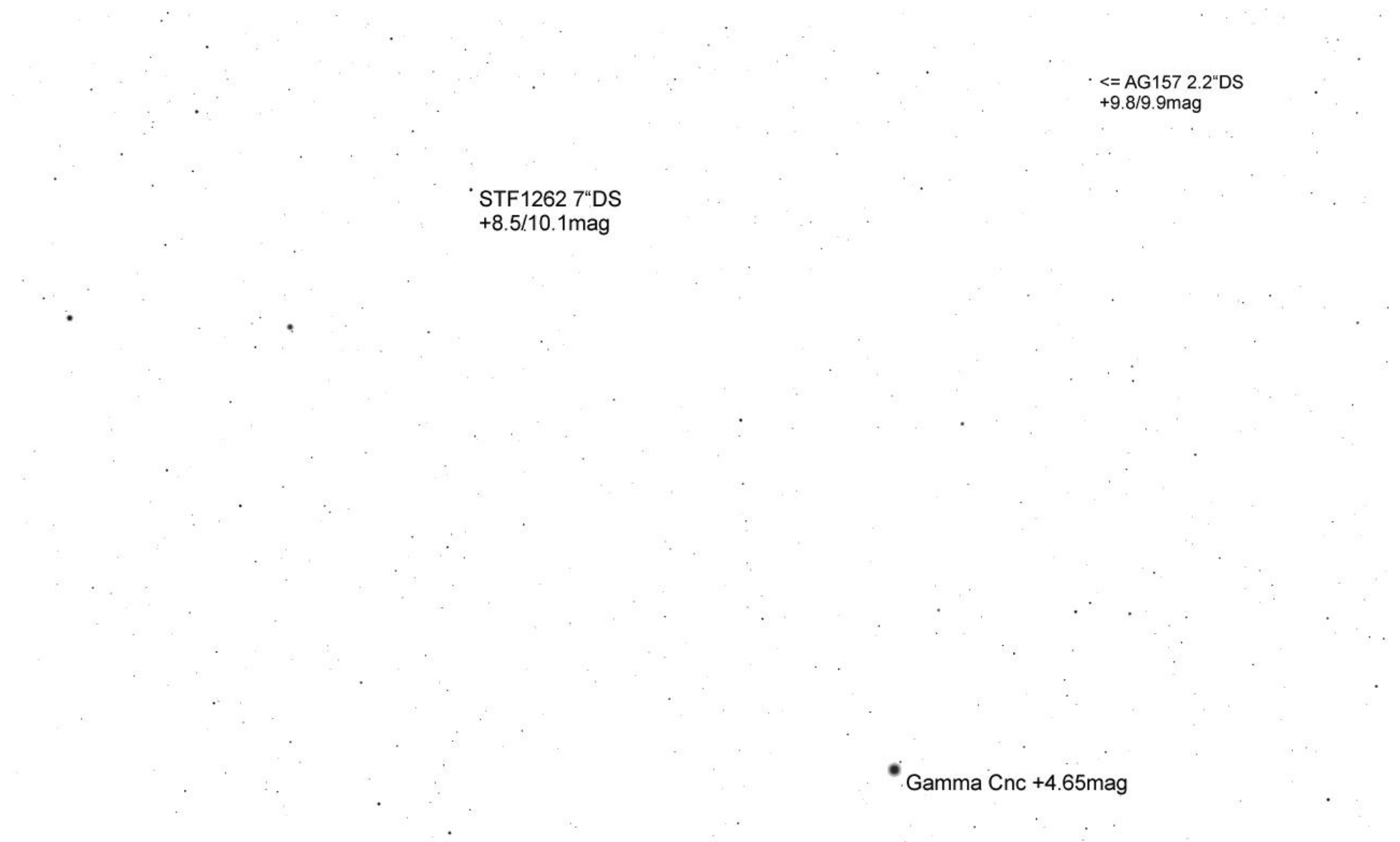
Erde, Wien, 168m

FOV 2.8°

15.3 FPS

2011-03-03 23:11:06

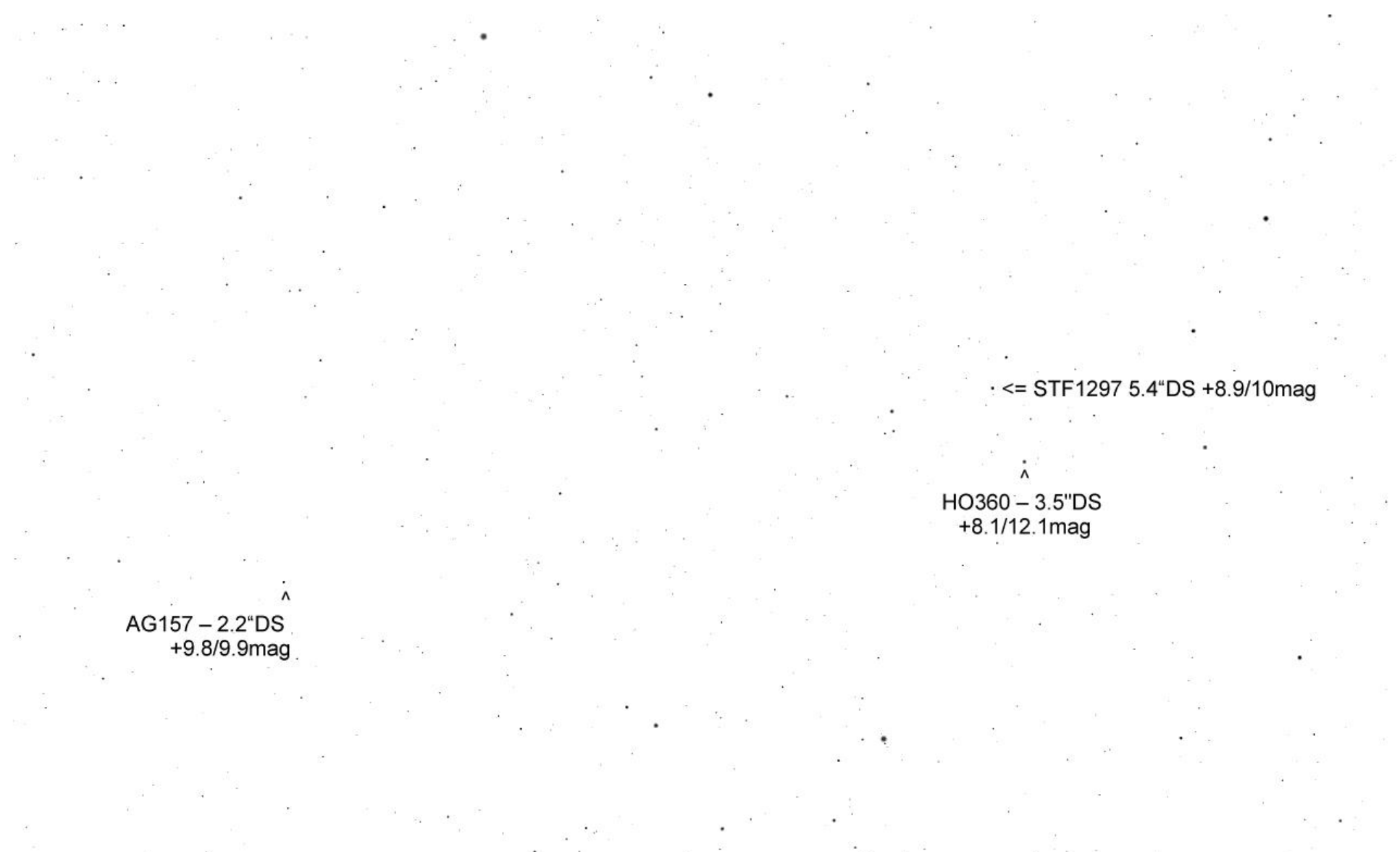
3° Umfeld Gamma Cnc - seitenverkehrt



STF1262 7"DS
+8.5/10.1mag

<= AG157 2.2"DS
+9.8/9.9mag

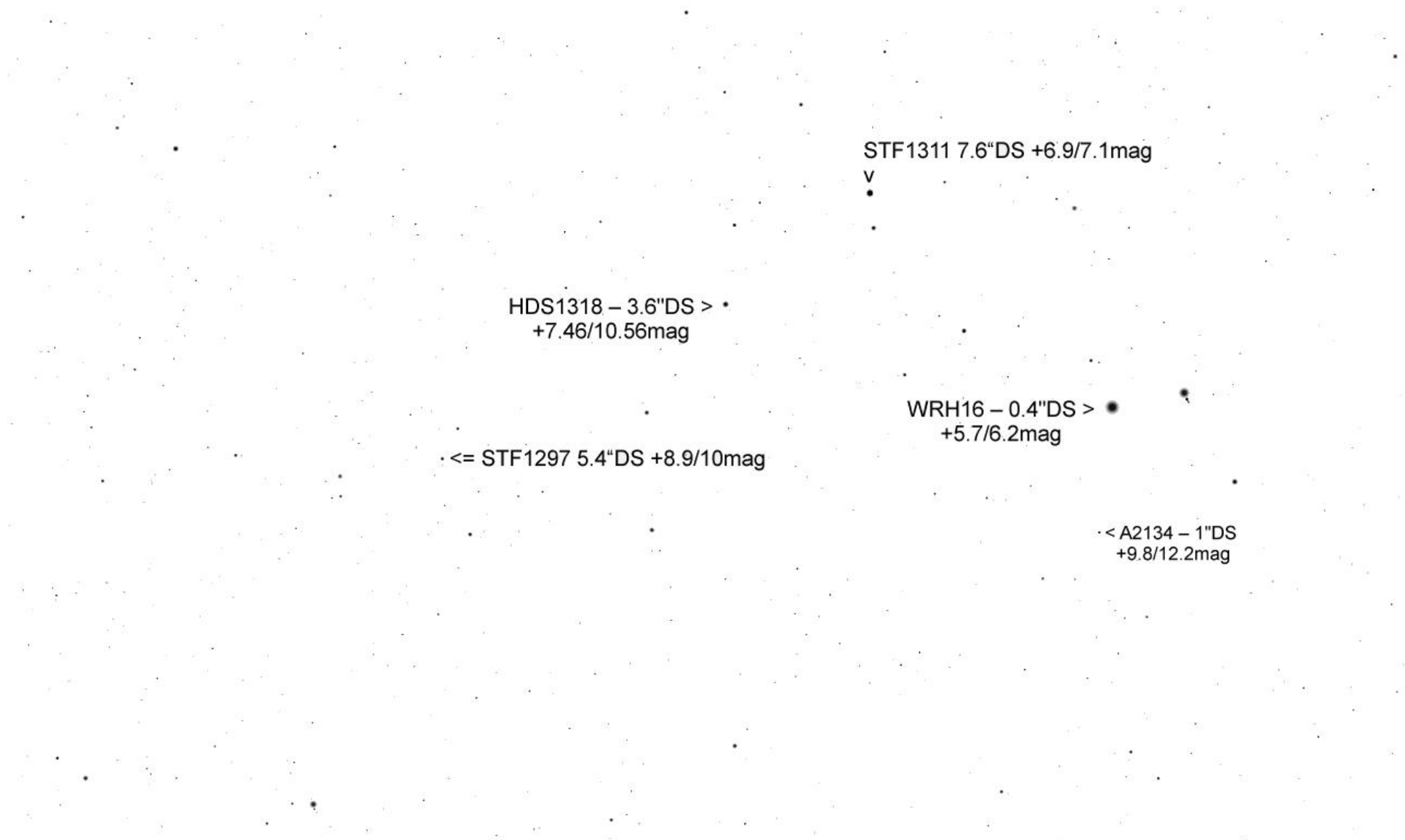
Gamma Cnc +4.65mag



AG157 – 2.2"DS
+9.8/9.9mag

HO360 – 3.5"DS
+8.1/12.1mag

· <= STF1297 5.4"DS +8.9/10mag



STF1311 7.6"DS +6.9/7.1mag

v

HDS1318 – 3.6"DS >
+7.46/10.56mag

WRH16 – 0.4"DS >
+5.7/6.2mag

· <= STF1297 5.4"DS +8.9/10mag

· < A2134 – 1"DS
+9.8/12.2mag

• <= STF1332 6.1"DS +7.87/8.12mag

• < STT198 – 14.6"DS +7.5/12mag

^
HO364 – 3.5"DS
+8.75/11.8mag

STF1311 7.6"DS +6.9/7.1mag

v