

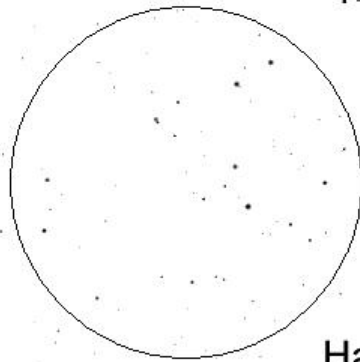
M53  
KSH =>◊  
+7.7mag

Alpha Com  
+4.3mag

M64 GLX =>◊  
+8.5mag

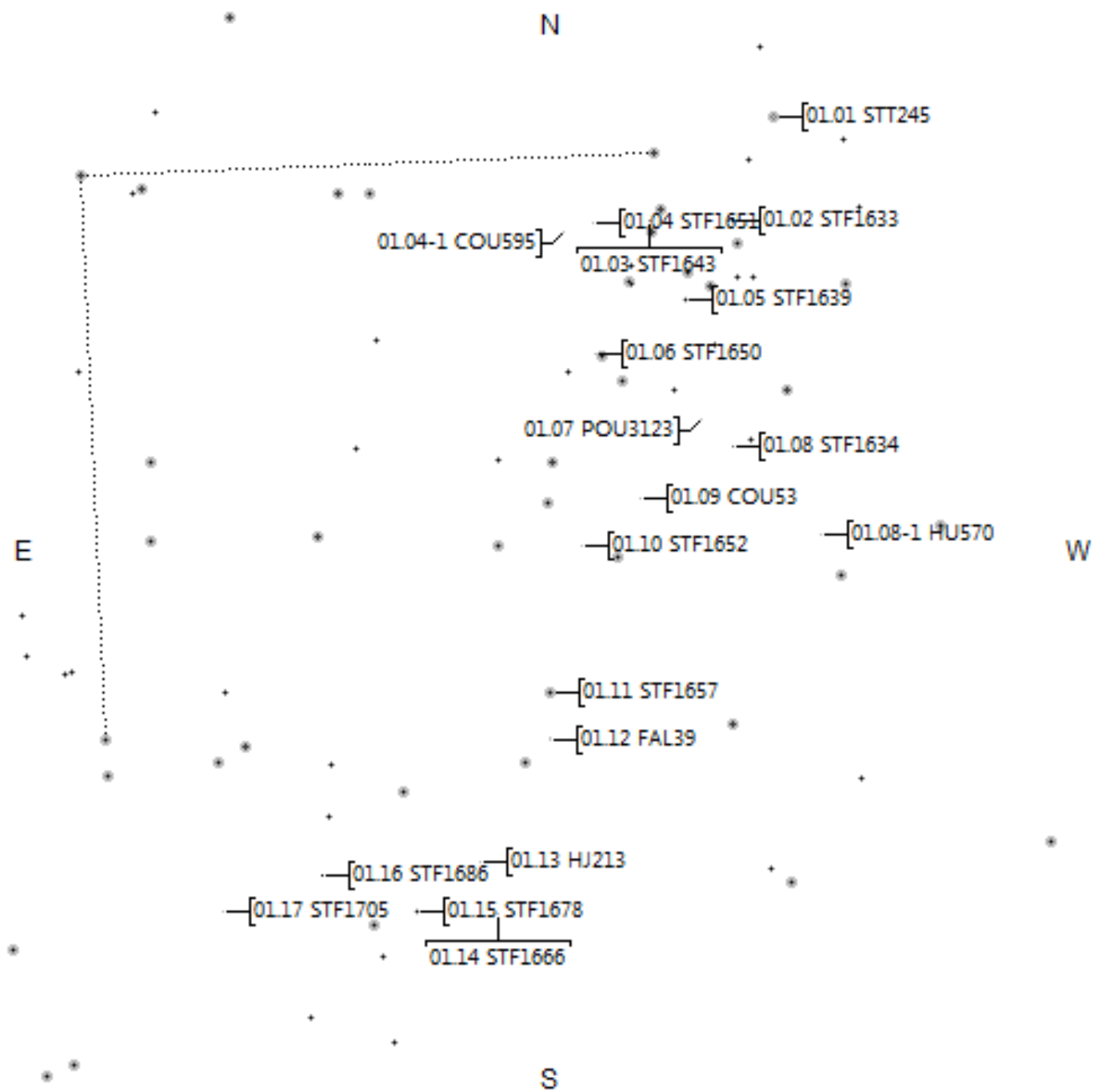
Beta Com  
+4.2mag

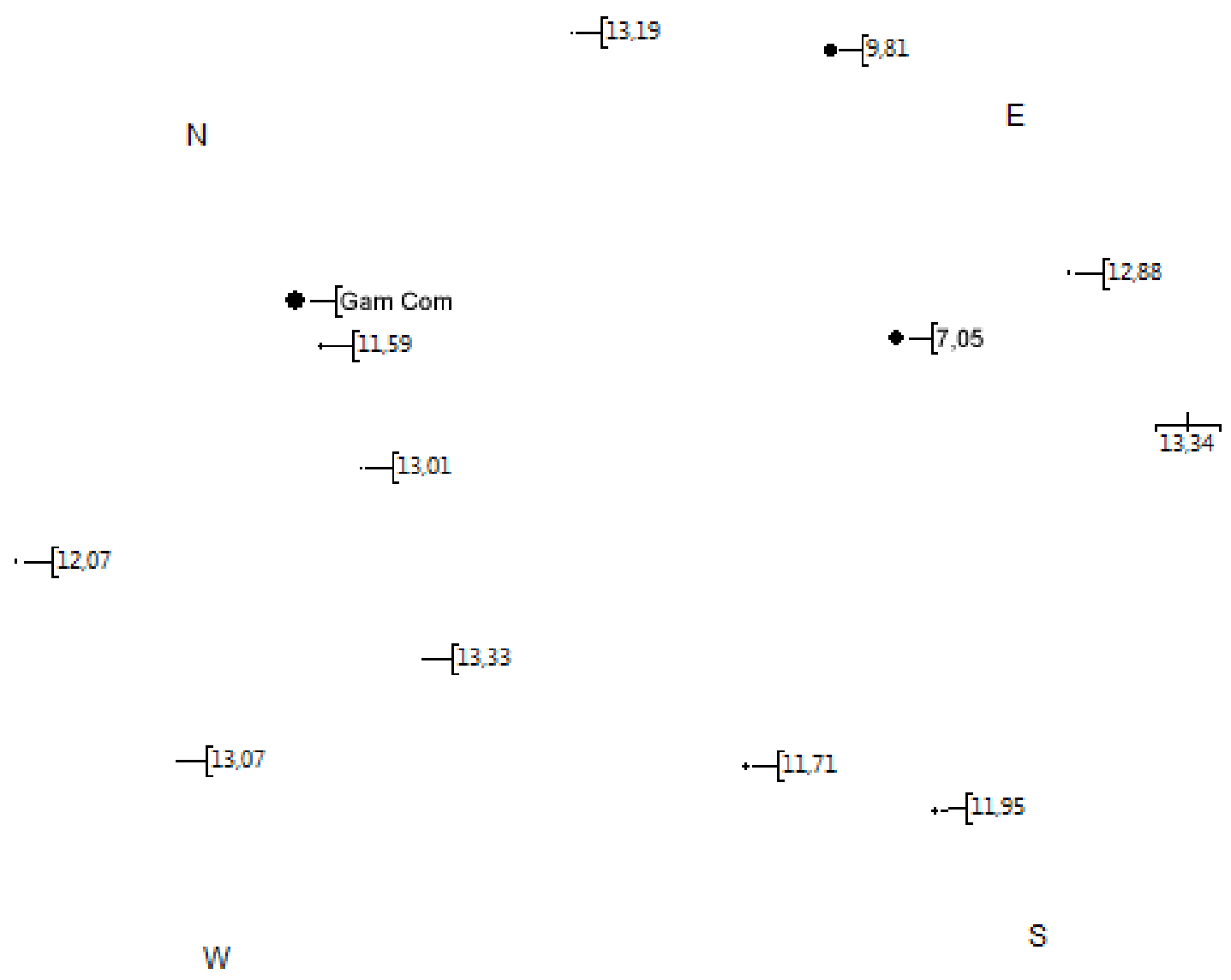
Gamma Com  
+4.35mag



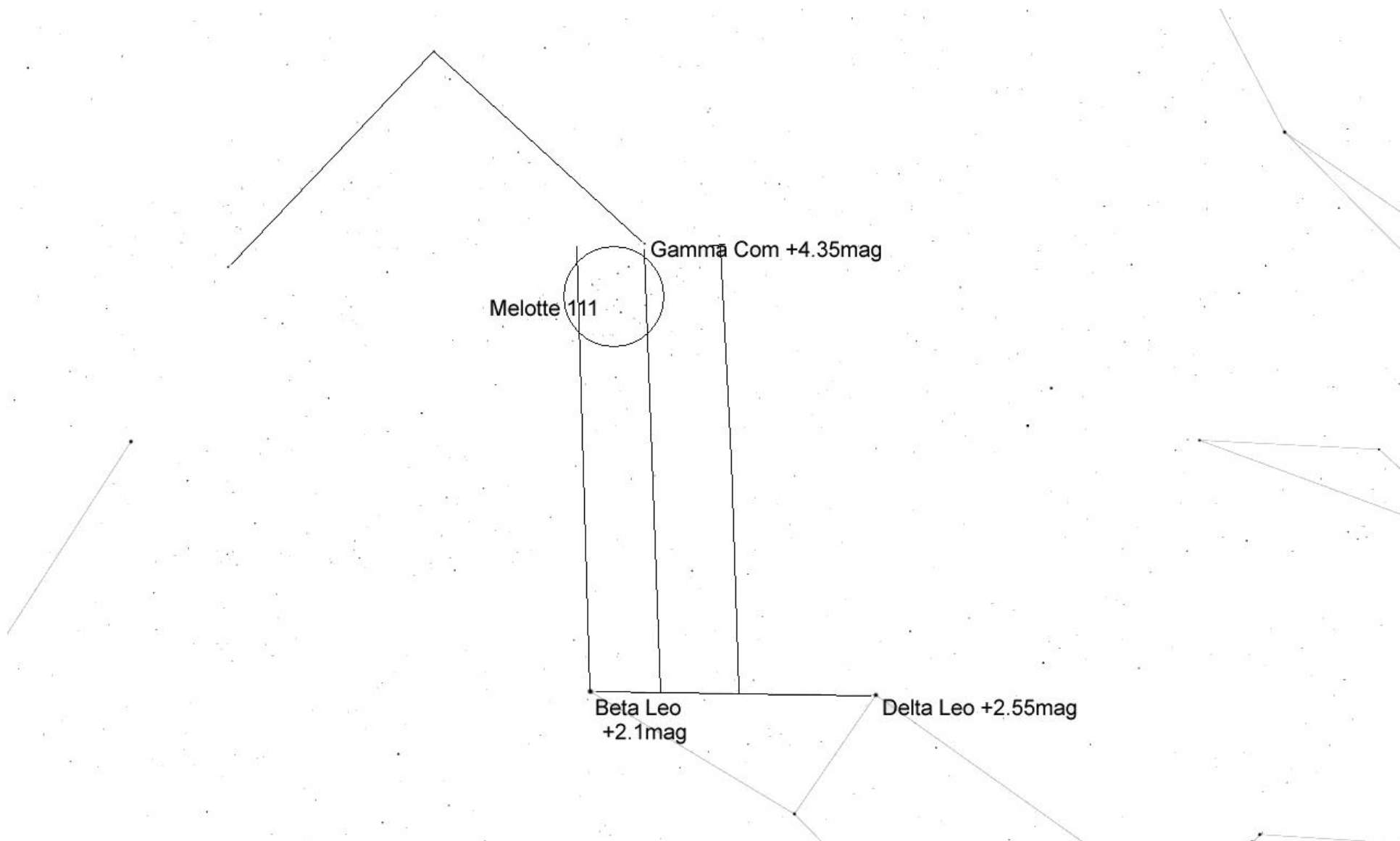
Melotte 111

Haar der Berenike





TML Gamma Com per Ende Mai 25'



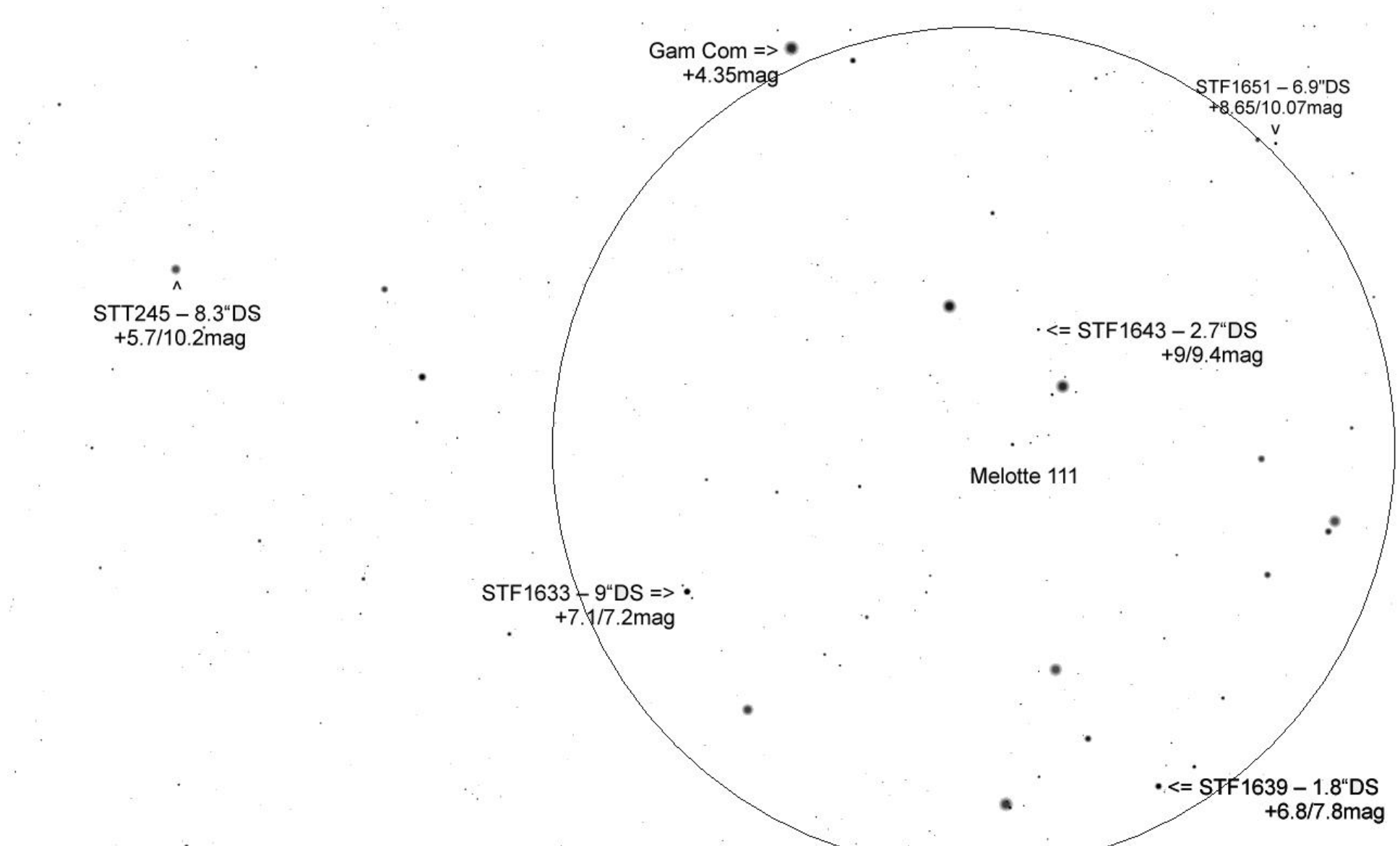
Erde, 'A1 Wien, 168m

FOV 30.9°

37.8 FPS

2012-05-30 22:30:43

Lokalisierung Gamma Com



STF1639 – 1.8"DS  
+6.8/7.8mag

STF1650 – 16.9"DS  
+9.54/10.47mag

POU3123 – 17.7"DS  
+10.75/11.46mag

COU53 – 2.5"DS  
+10/10.8mag

STF1634 – 5.4"DS +8.8/9.9mag

< COU53 – 2.5"DS  
+10/10.8mag

STF1652 – 6.1"DS  
+10.12/10.40mag  
v

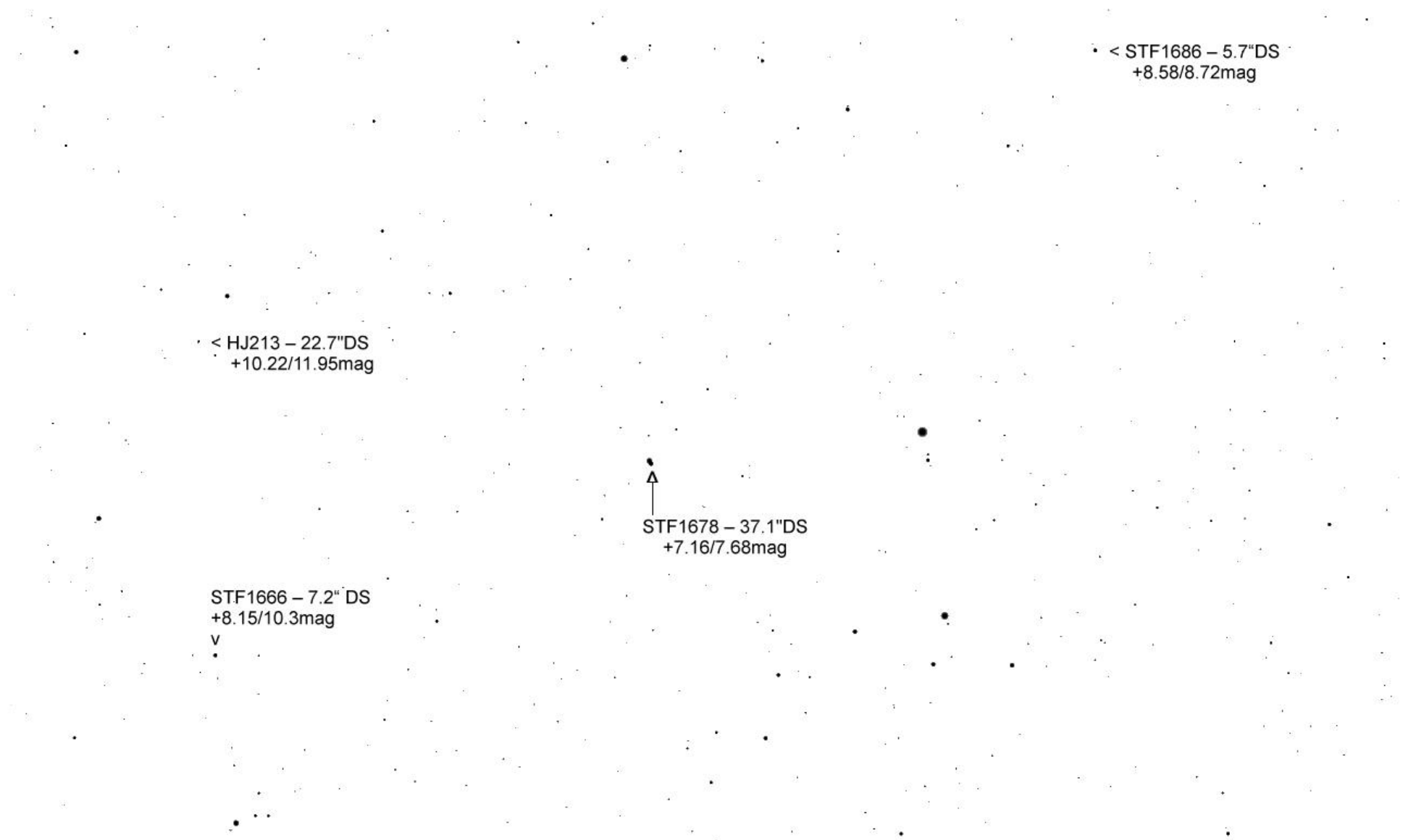
STF1657 – 21.4"DS  
+5.11/6.33mag  
v

● < STF1657 – 21.4"DS  
+5.11/6.33mag

^  
FAL39 – 16.2"DS  
+10.07/12.22mag

\* < HJ213 – 22.7"DS +10.22/11.95mag







^  
STF1686 – 5.7"DS  
+8.58/8.72mag

^  
STF1705 – 26.8"DS  
+9.03/10.28mag