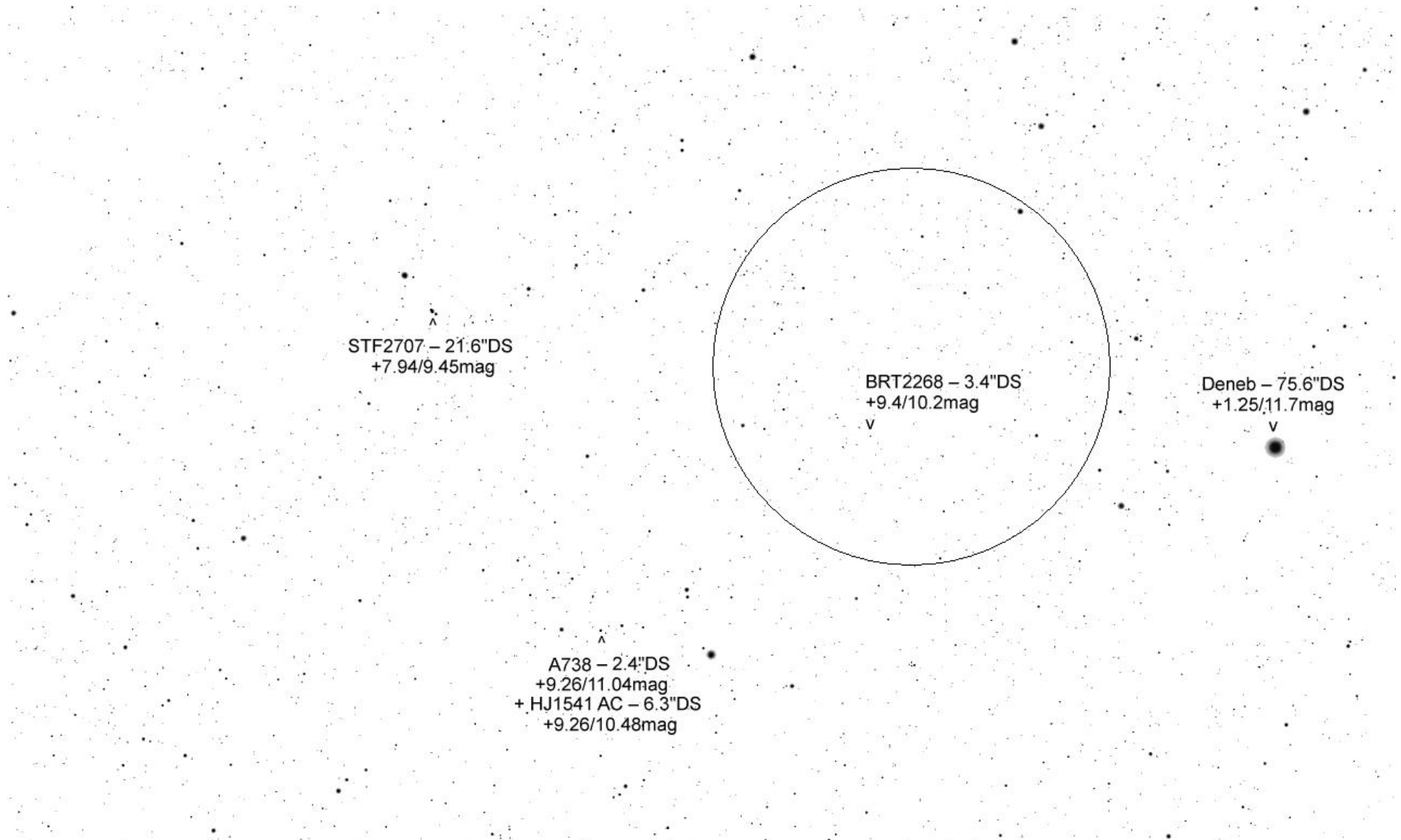
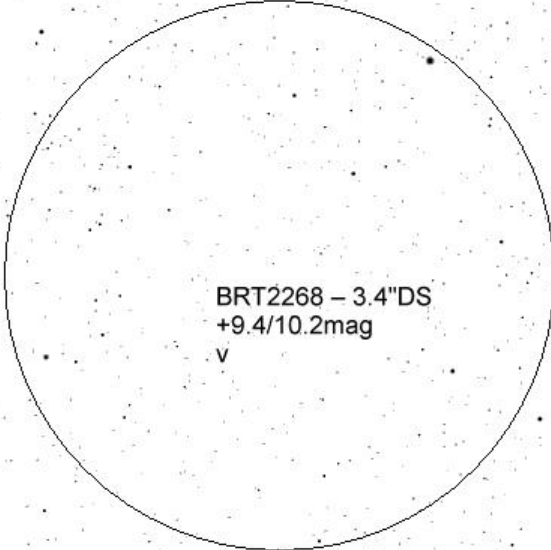


TML Deneb per Mitte Okt 15' FoV



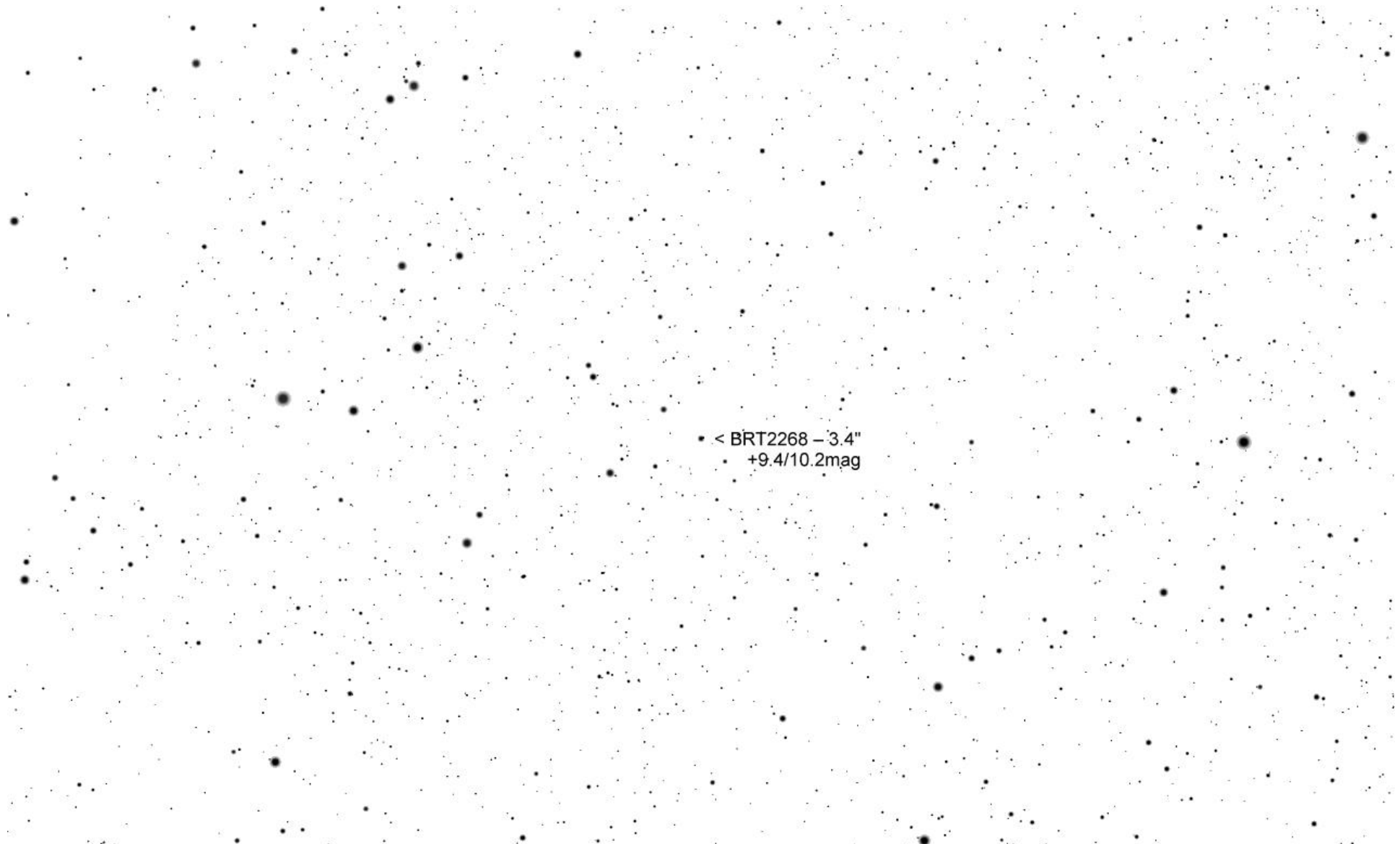
STF2707 – 21.6"DS  
+7.94/9.45mag



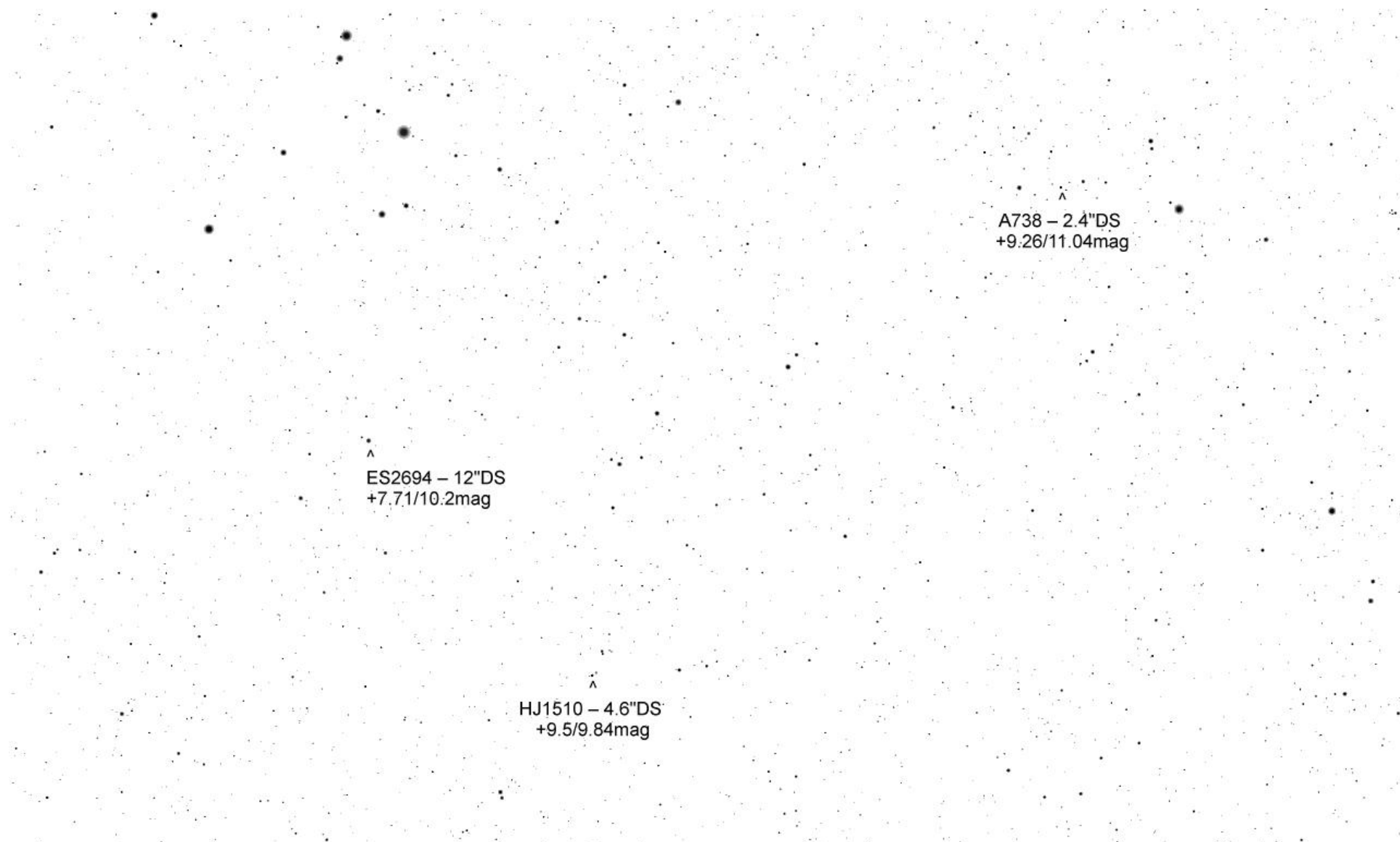
BRT2268 – 3.4"DS  
+9.4/10.2mag

Deneb – 75.6"DS  
+1.25/11.7mag

A738 – 2.4"DS  
+9.26/11.04mag  
+ HJ1541 AC – 6.3"DS  
+9.26/10.48mag



< BRT2268 - 3.4"  
+9.4/10.2mag



^  
A738 – 2.4"DS  
+9.26/11.04mag

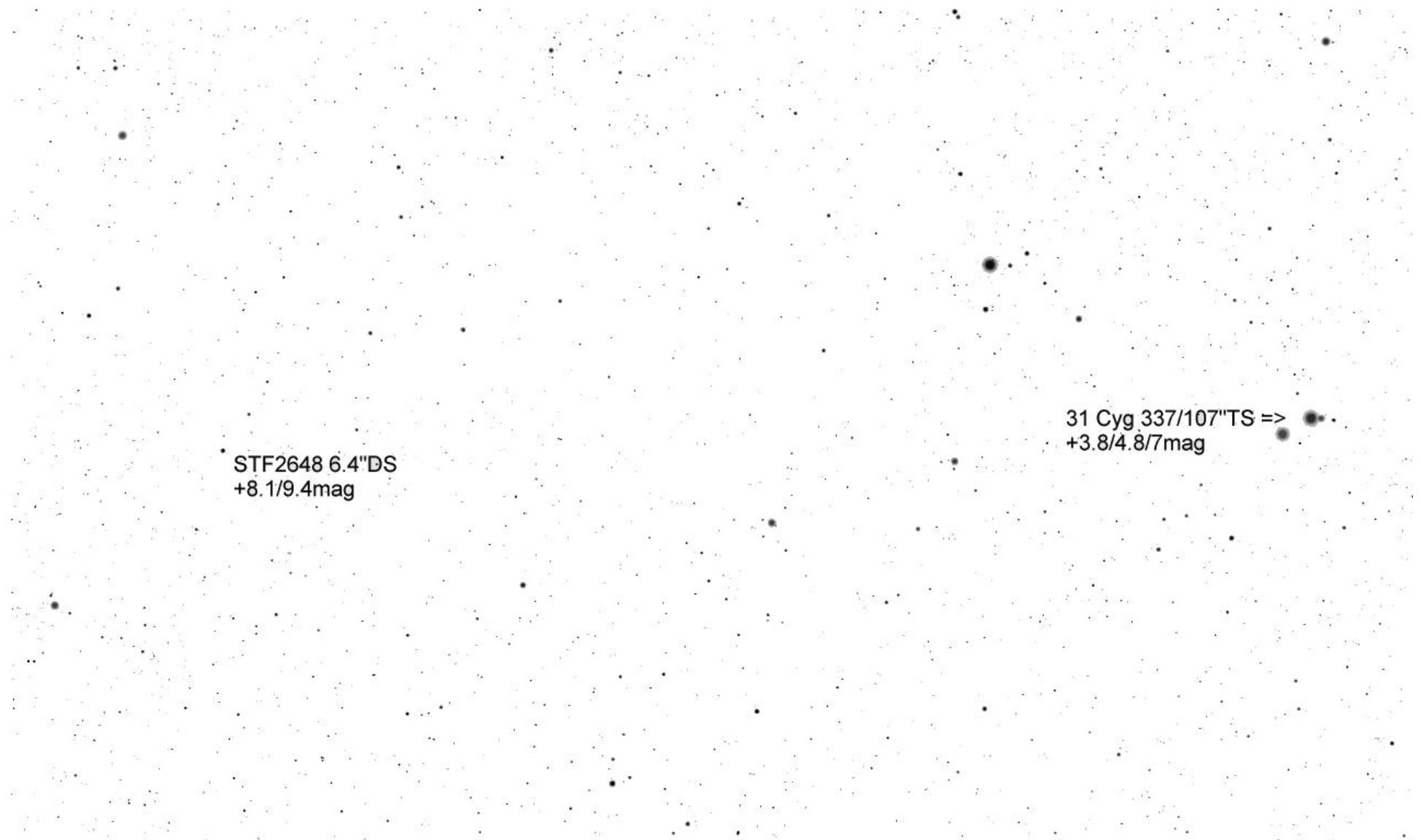
^  
ES2694 – 12"DS  
+7.71/10.2mag

^  
HJ1510 – 4.6"DS  
+9.5/9.84mag

^  
HJ1510 – 4.6"DS  
+9.5/9.84mag

31 Cyg – 333.8/111"TS  
+3.93/4.83/6.97mag  
v

STF2667 – 8.4"DS  
+8.66/9mag  
v



STF2648 6.4"DS  
+8.1/9.4mag

31 Cyg 337/107"TS =>  
+3.8/4.8/7mag

STF2645 – 1.6"DS  
+8.55/8.98mag

v

STF2648 – 6.8"  
+8.11/9.59mag

KU58 – 2.7"DS  
+10.23/10.41mag

v



KU58 – 2.7"DS  
+10.23/10.41mag  
v

STF2619 AB – 4.2"DS  
+8.91/8.92mag  
v

STF2611 – 5.4"DS  
+8.47/8.48mag  
^