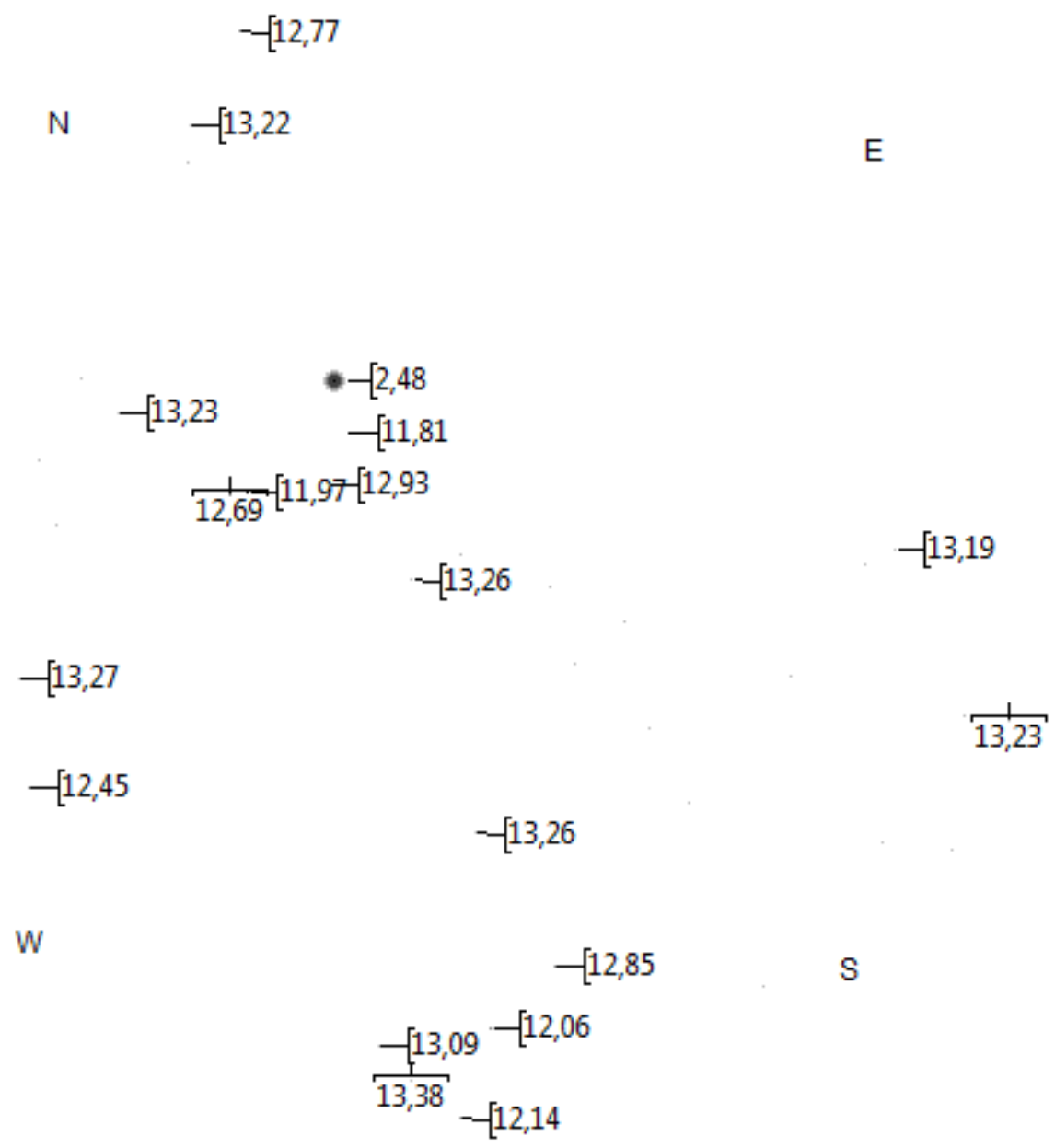
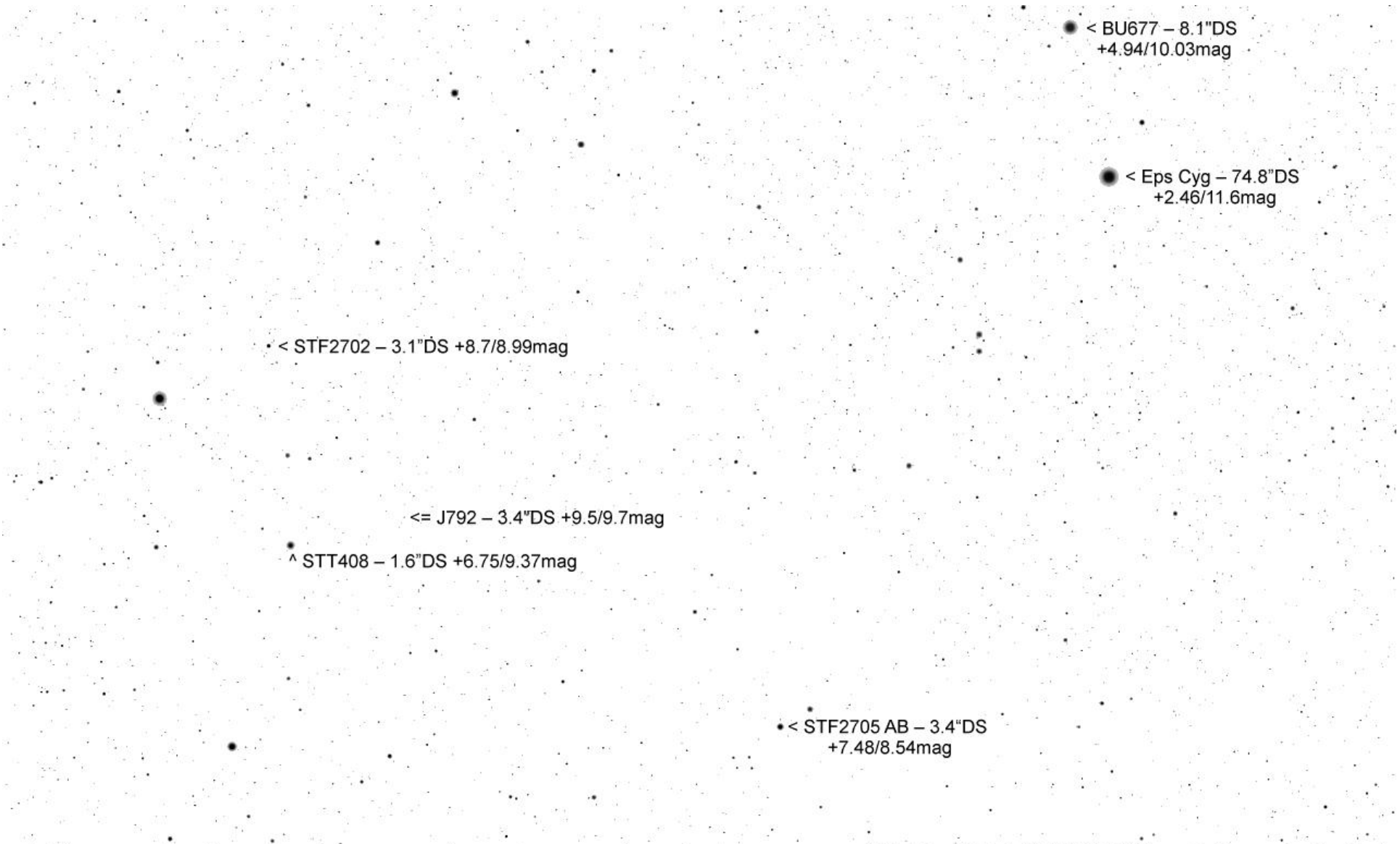
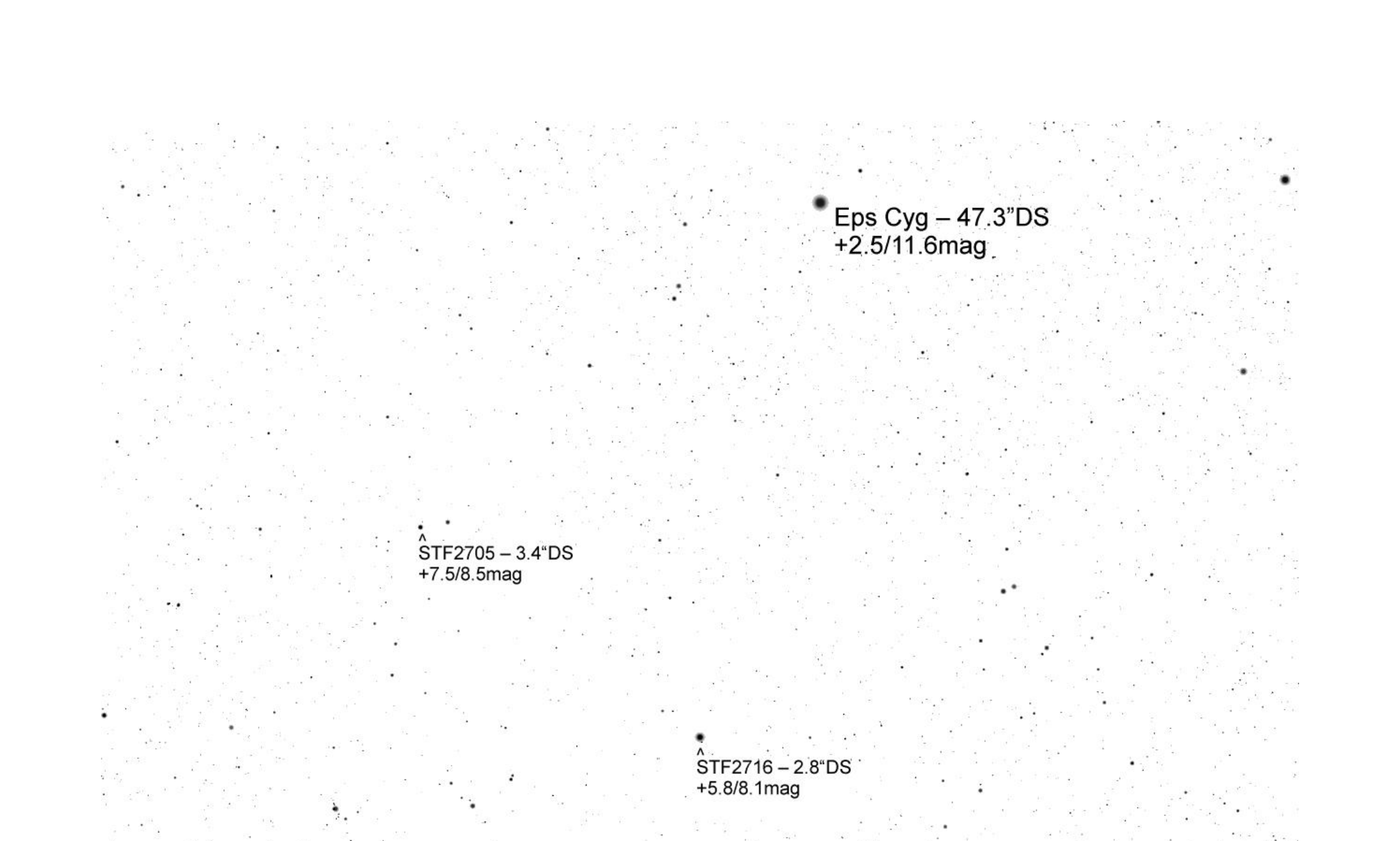


TML Eps Cyg per Mitte September 10' FoV



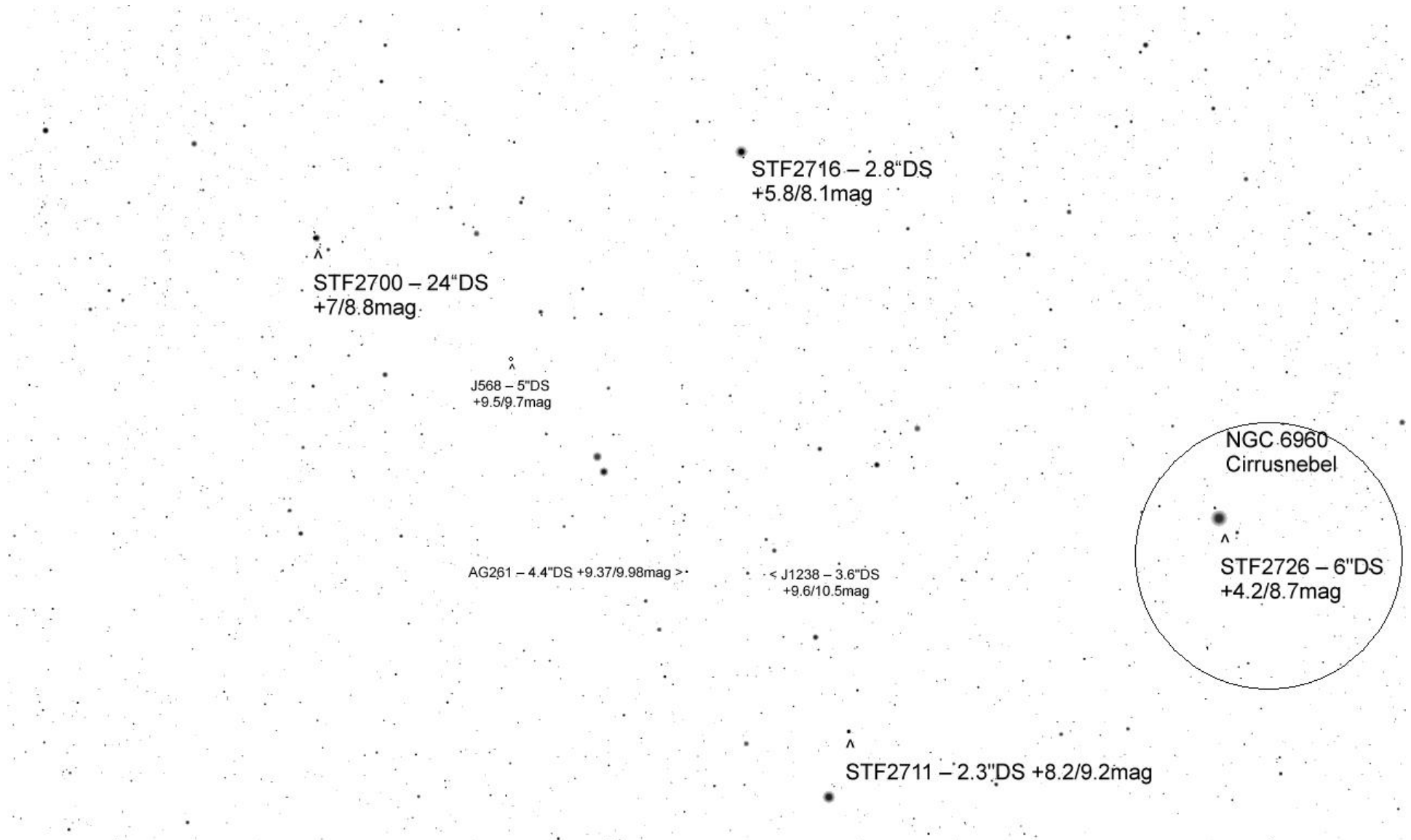




Eps Cyg – 47.3" DS
+2.5/11.6mag

^
STF2705 – 3.4" DS
+7.5/8.5mag

^
STF2716 – 2.8" DS
+5.8/8.1mag



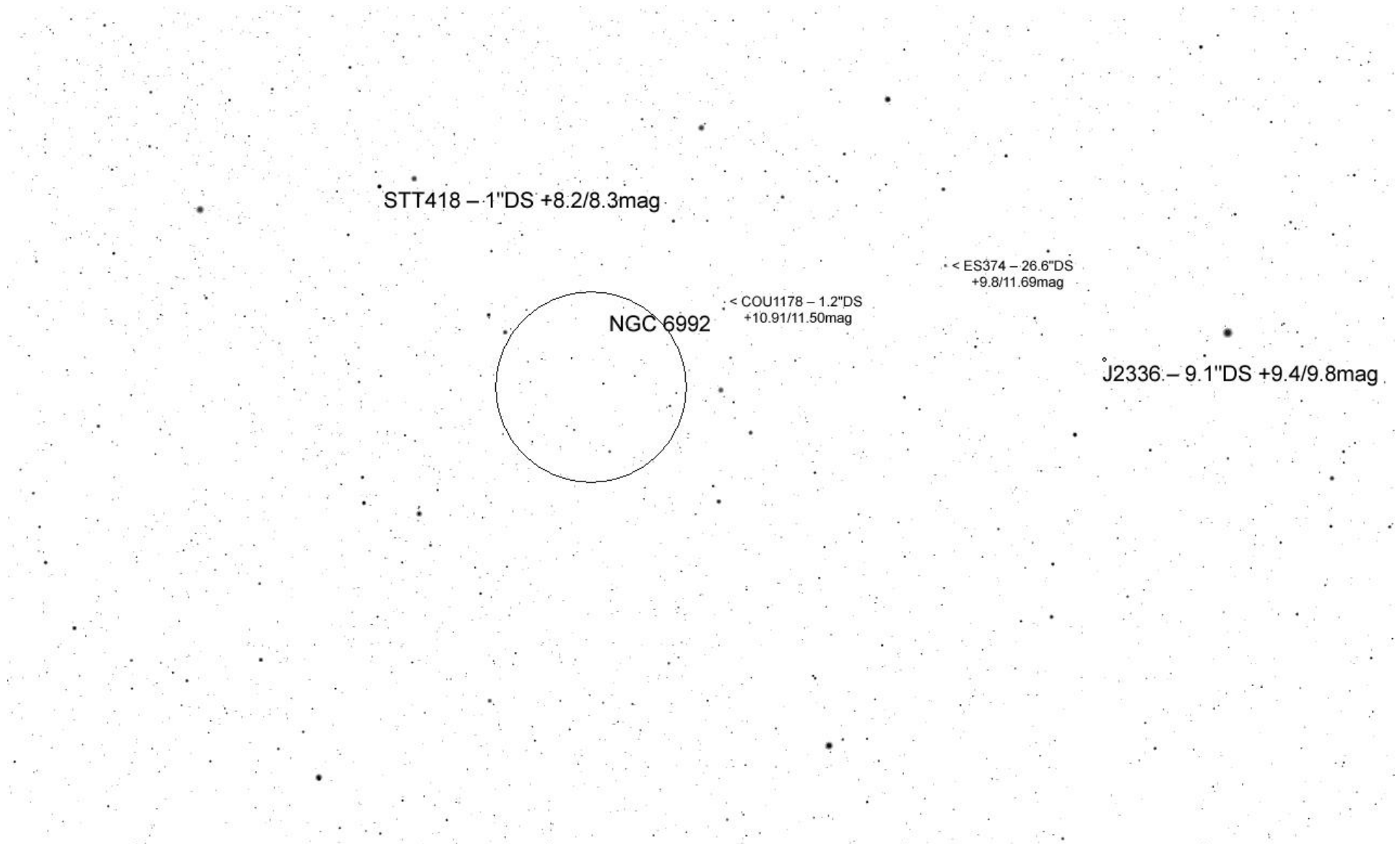
NGC 6992 (Schleiernebel)

BU67 – 1.6"DS +6.8/9.9mag

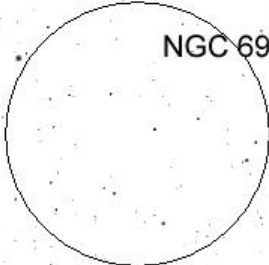
NGC 6960 (Citrusnebel)

STT415 – 3.7"DS +8.2/10.1mag

52 Cyg => STF2726 6.6"DS +4.2/8.7mag



STT418 - 1"DS +8.2/8.3mag

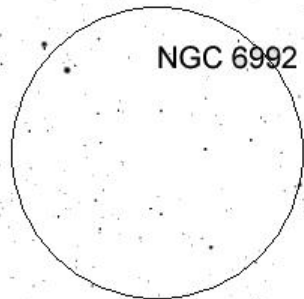


NGC 6992

< COU1178 - 1.2"DS
+10.91/11.50mag

< ES374 - 26.6"DS
+9.8/11.69mag

J2336 - 9.1"DS +9.4/9.8mag



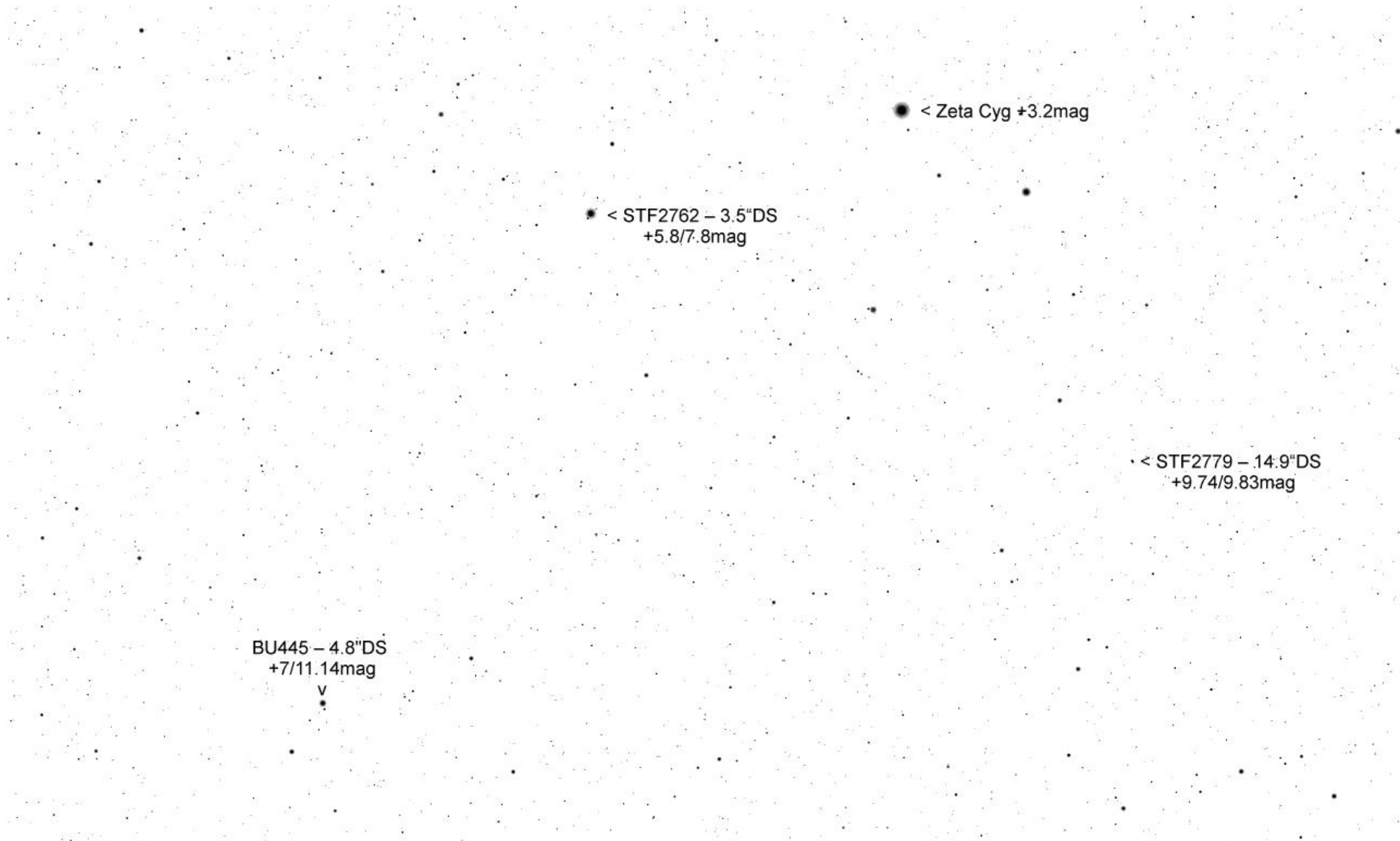
NGC 6992 (Schleiernebel)

< ES374 - 26.6"DS
+9.8/11.69mag

J2336 - 9.1"DS +9.4/9.8mag

Zeta Cyg =>
+3.2mag

STF2762 3.5"DS
+5.8/7.8mag



● < Zeta Cyg +3.2mag

● < STF2762 - 3.5"DS
+5.8/7.8mag

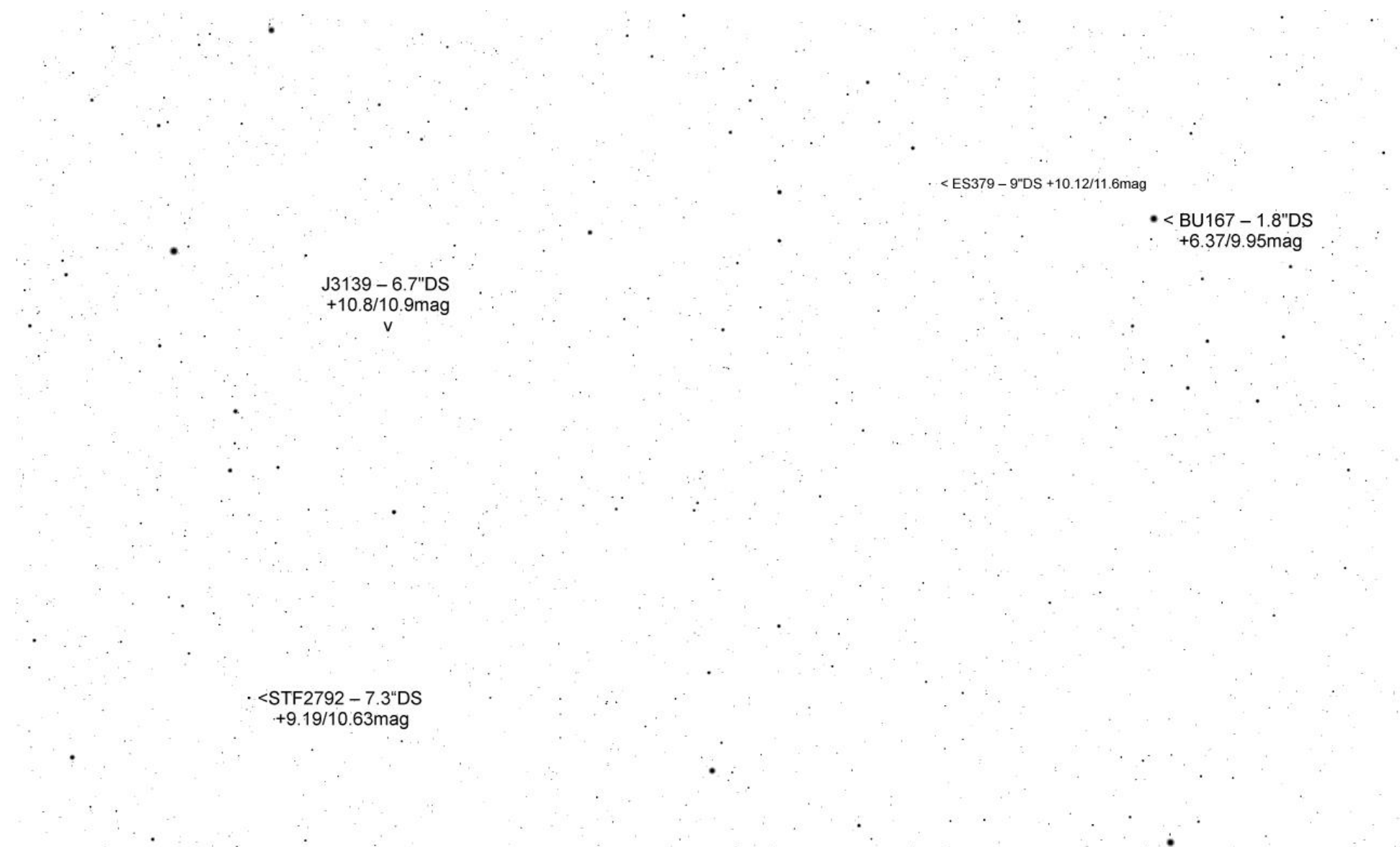
● < STF2779 - 14.9"DS
+9.74/9.83mag

● BU445 - 4.8"DS
+7/11.14mag

● Zeta Cyg +3.2mag

STF2792 7.2"DS =>
+9.2/10.6mag

STF2779 19.2"DS
+9.8/9.8mag



J3139 – 6.7"DS
+10.8/10.9mag
v

< ES379 – 9"DS +10.12/11.6mag

• < BU167 – 1.8"DS
+6.37/9.95mag

• < STF2792 – 7.3"DS
+9.19/10.63mag

• <= BU167 – 1.8"DS
+6.4/9.9mag

STF2829 – 16.8"DS
+8.9/+9.7mag

Mu Cyg
STF2822 – 1.8"DS
+4.8/6.2mag