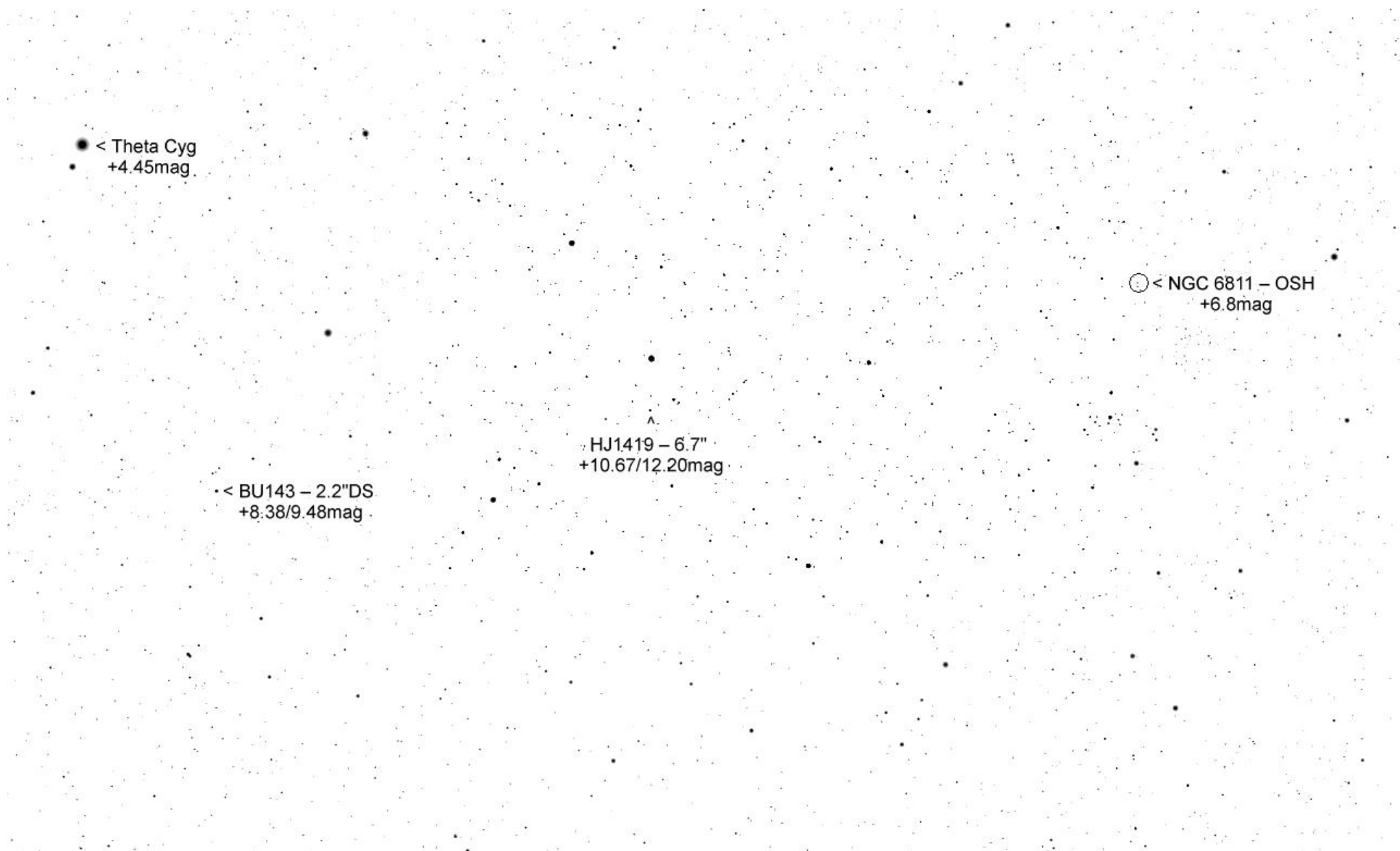


STF2588 9.6"DS =>
+7.2/7.9mag

Delta Cyg 2,6"DS =>
+2.9/6.6mag

NGC 6811 OSH +6.8mag

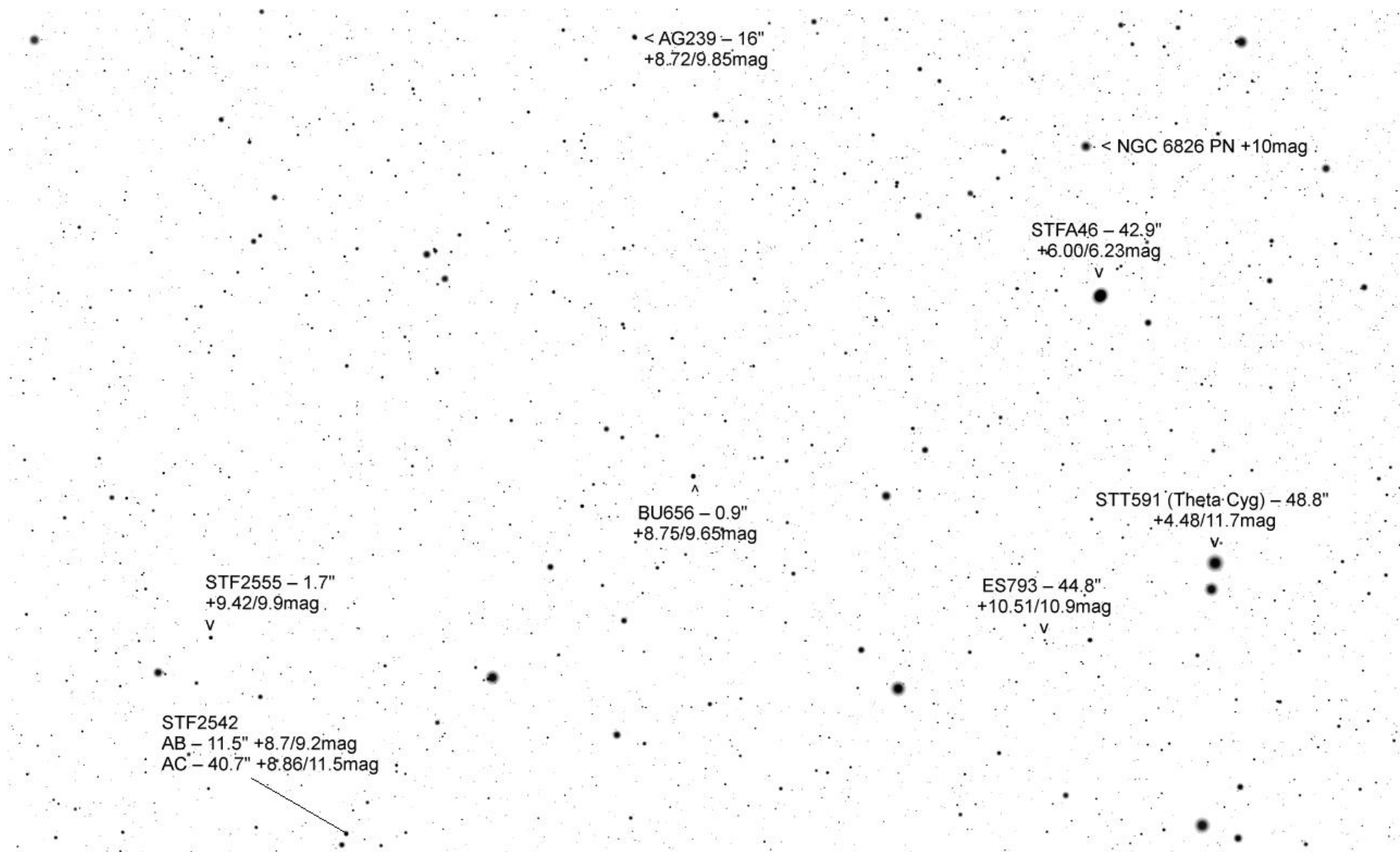


● < Theta Cyg
+4.45mag

○ < NGC 6811 – OSH
+6.8mag

⋄ < BU143 – 2.2"DS
+8.38/9.48mag

▲ HJ1419 – 6.7"
+10.67/12.20mag



Erde, A1 Wien, 168m

FOV 2.73° 47.3 FPS 2014-09-15 22:30:04

3° Umfeld BU656 - seitenverkehrt

BU427 – 3"DS
+8.39/10.18mag



BU426 – 5.9"DS
+8.53/10.50mag

< ARG35 – 7.4"DS
+9.00/9.92mag

● < Psi Cyg – 2.9"DS
+5.03/7.52mag

AG239 – 16"DS
+8.72/9.85mag

