

TML Deneb per Mitte Okt 15' FoV

ARG39 – 14.7"DS
+8.42/8.93mag
v

BRT2274 – 4.8"DS
+9.4/9.8mag
v

Deneb – 75.6"DS
+1.25/11.7mag
v

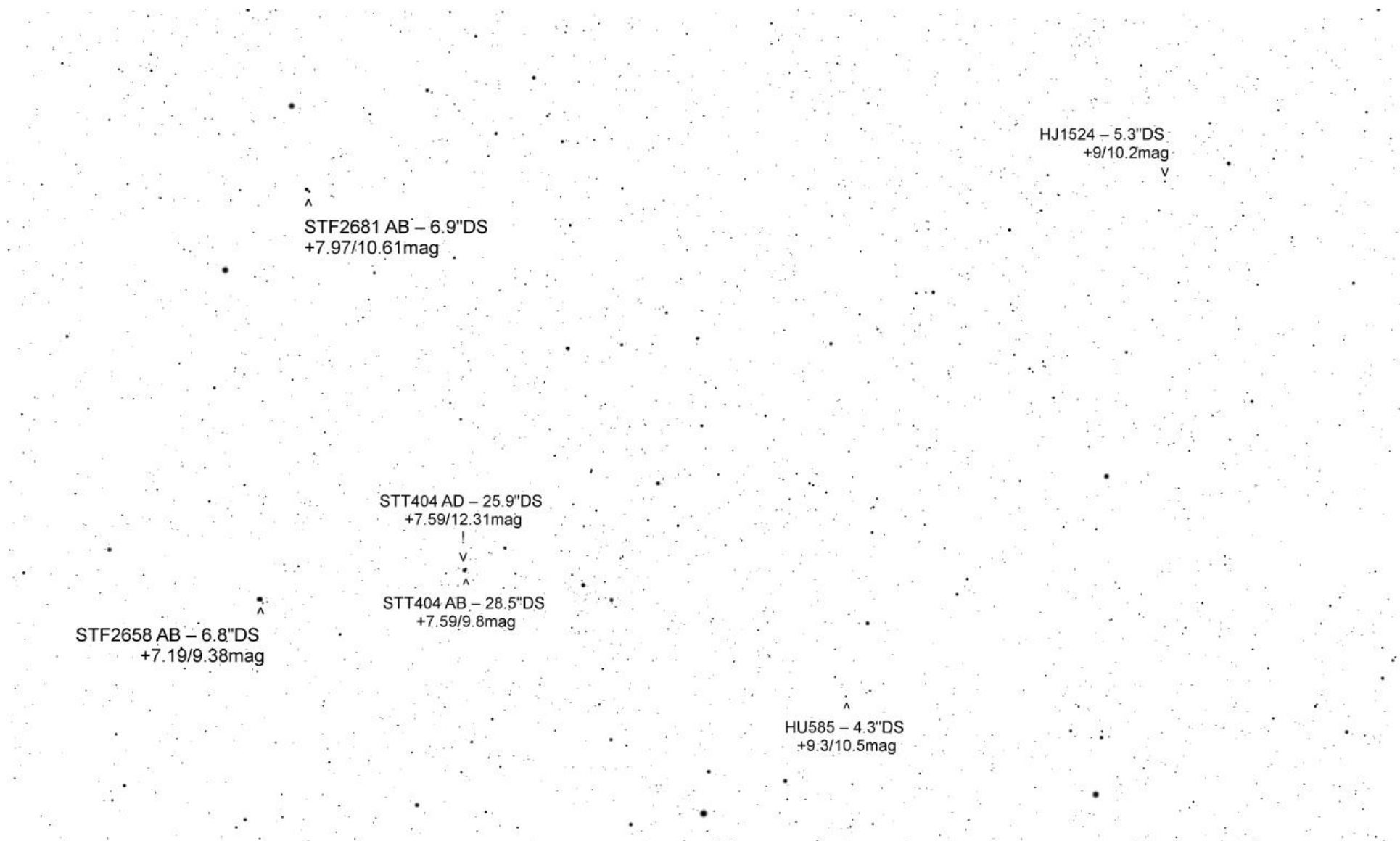


HLD39 – 7.4"DS
+8/10.5mag

ARG39 – 14.7"DS
+8.42/8.93mag

BRT2274 – 4.8"DS
+9.4/9.8mag

HJ1524 – 5.3"DS
+9/10.2mag



▲
▲
STF2681 AB – 6.9"DS
+7.97/10.61mag

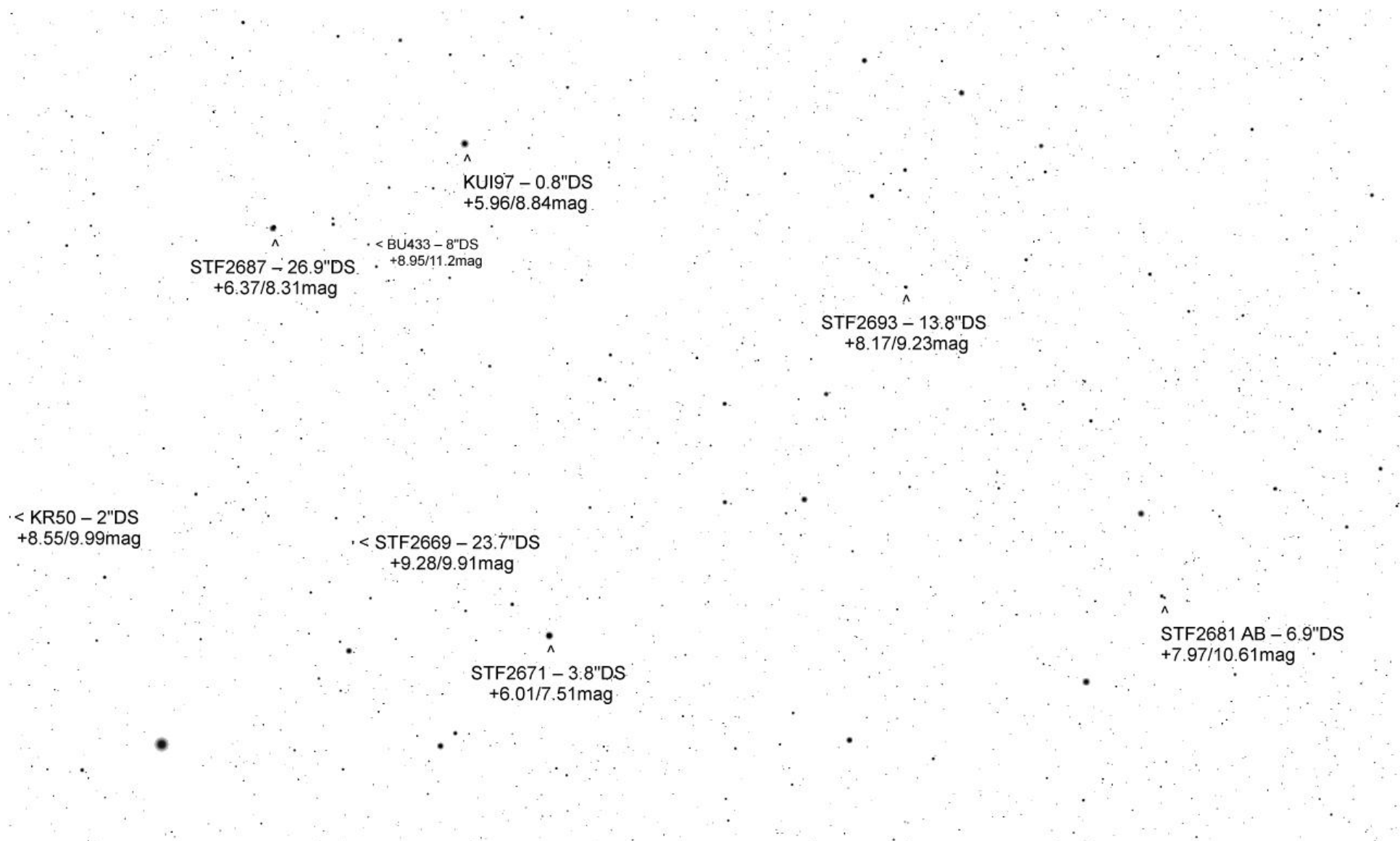
HJ1524 – 5.3"DS
+9/10.2mag
▼

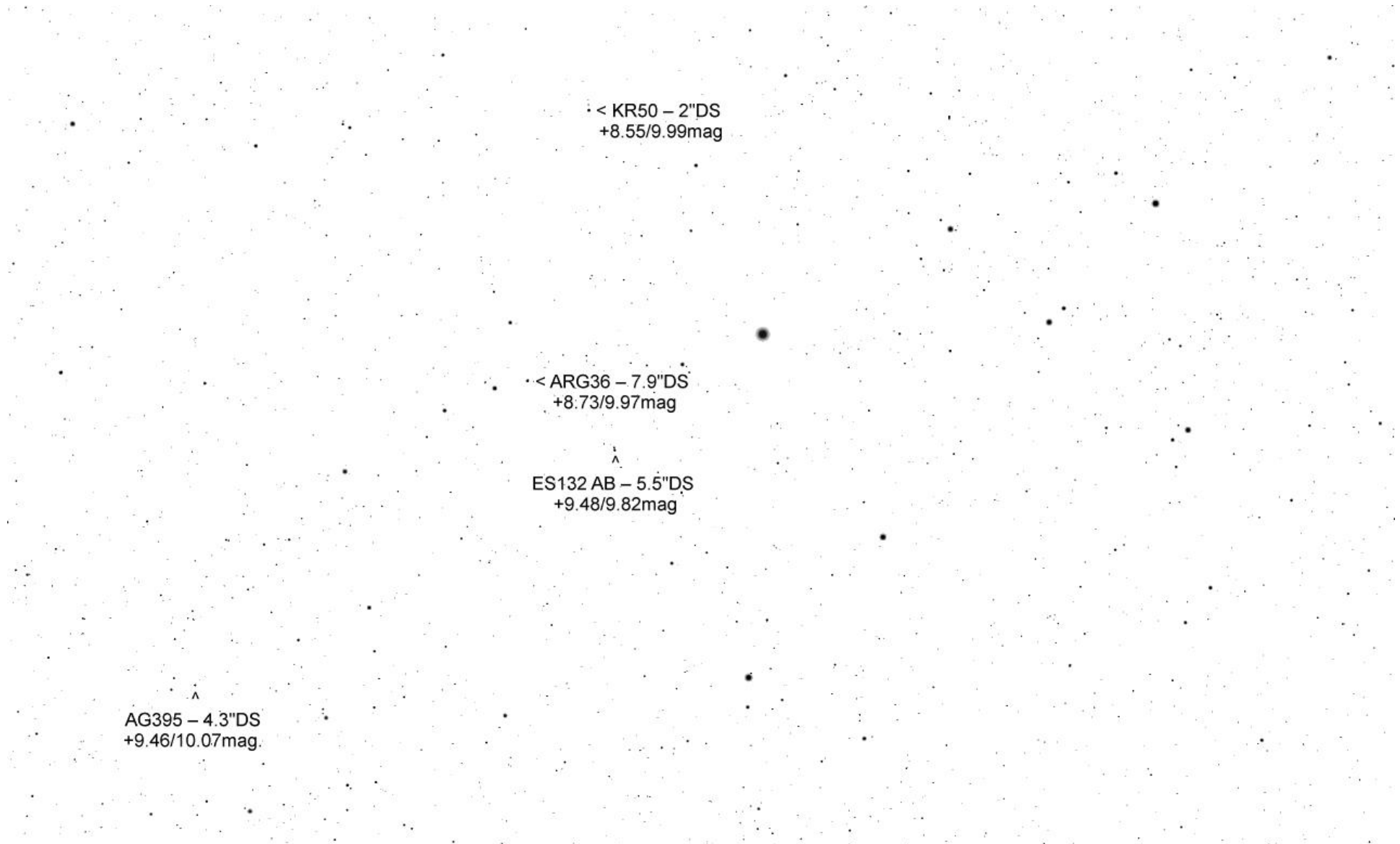
STT404 AD – 25.9"DS
+7.59/12.31mag
|
▼

▲
▲
STT404 AB – 28.5"DS
+7.59/9.8mag

▲
▲
STF2658 AB – 6.8"DS
+7.19/9.38mag

▲
▲
HU585 – 4.3"DS
+9.3/10.5mag





AG395 - 4.3"DS
+9.46/10.07mag

ES132 AB - 5.5"DS
+9.48/9.82mag

< ARG36 - 7.9"DS
+8.73/9.97mag

< KR50 - 2"DS
+8.55/9.99mag