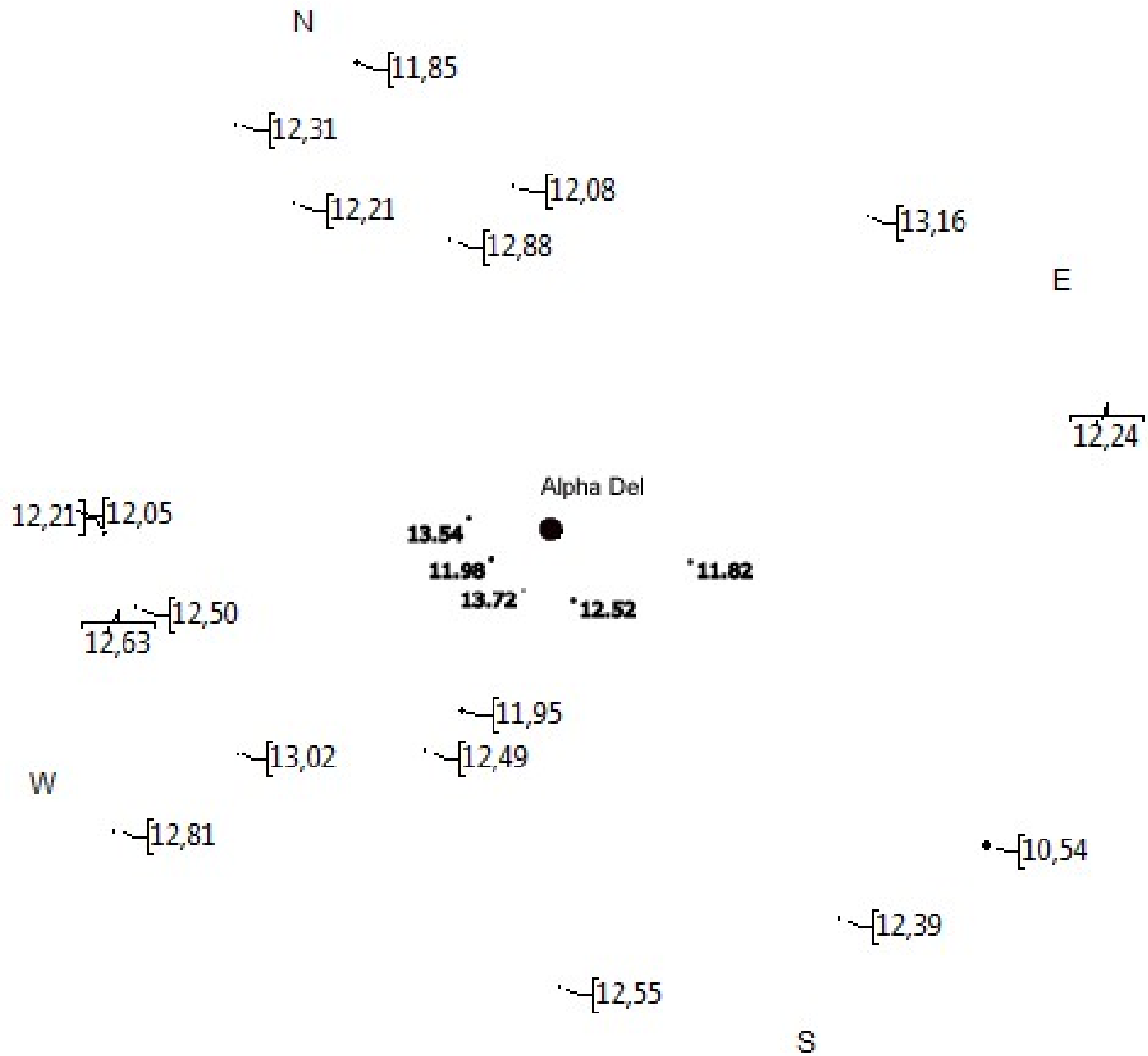
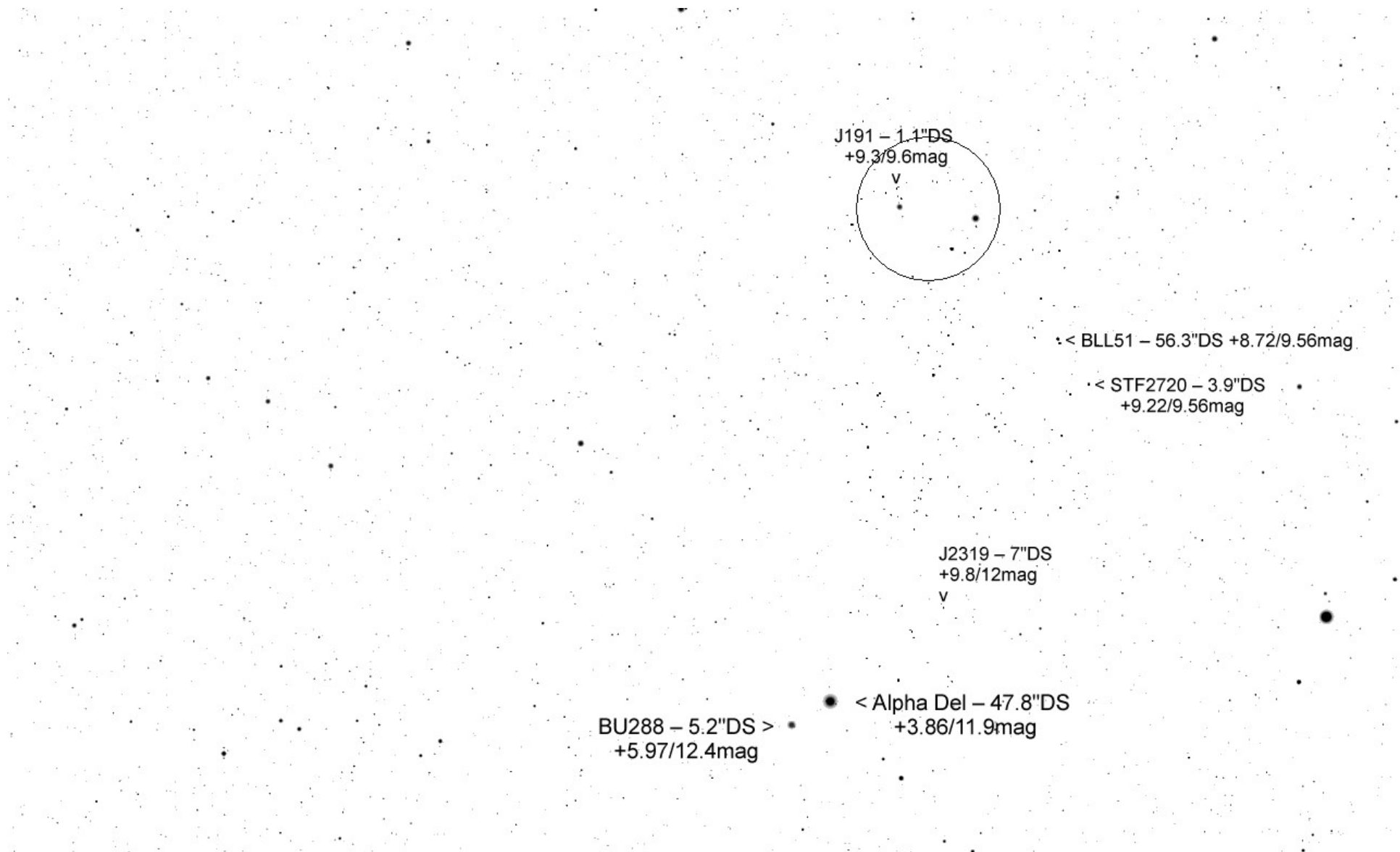
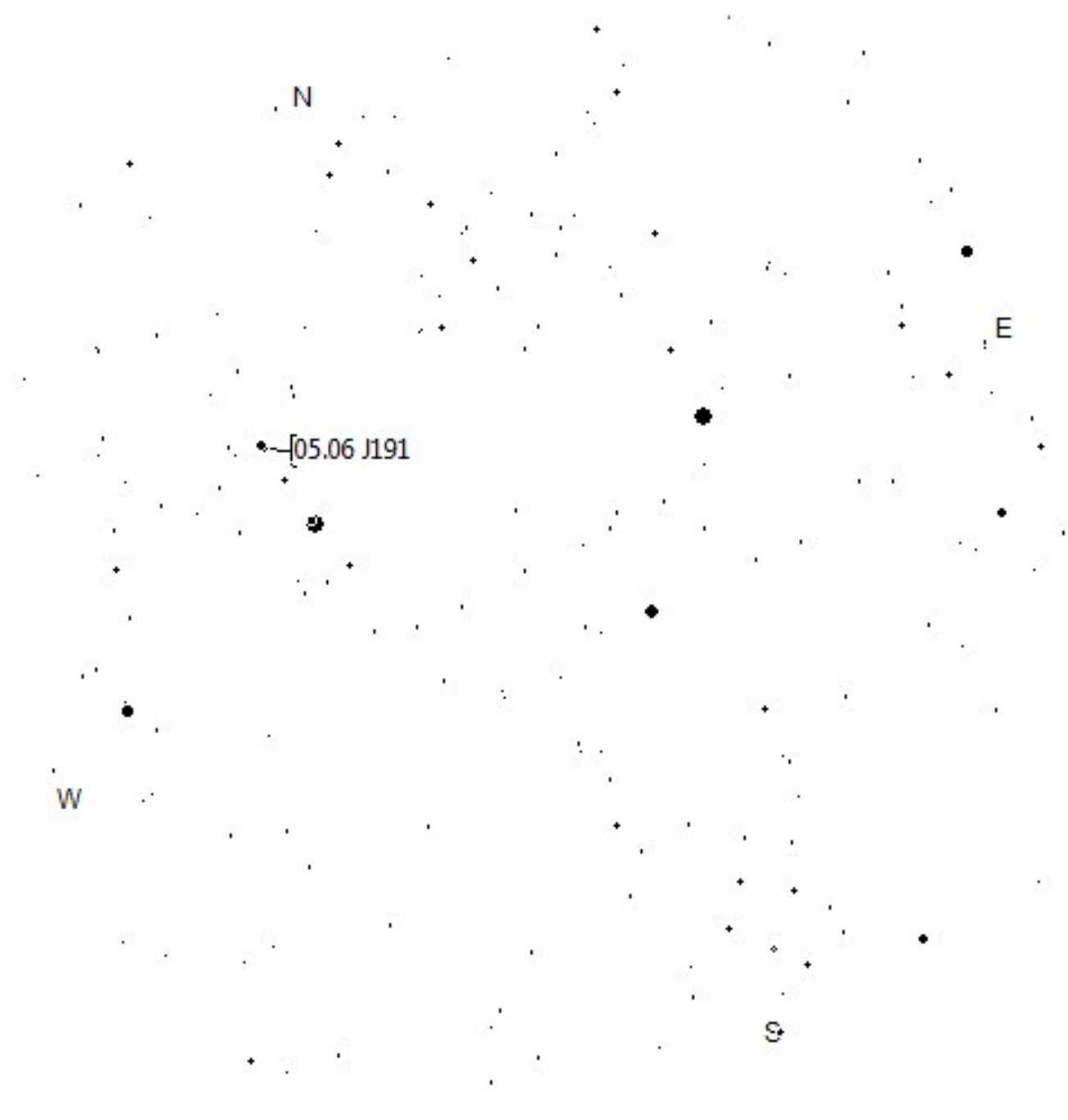


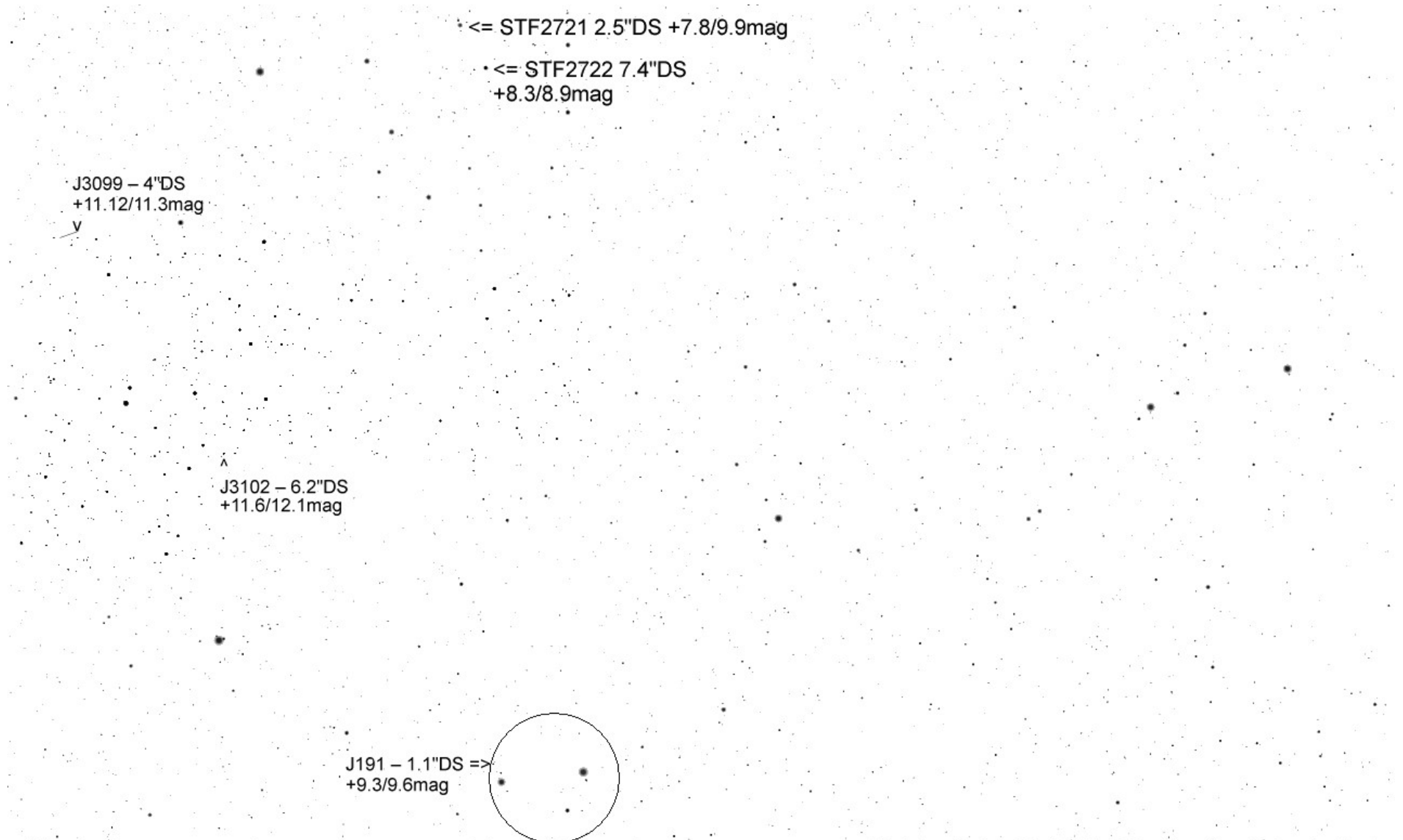
Delphin

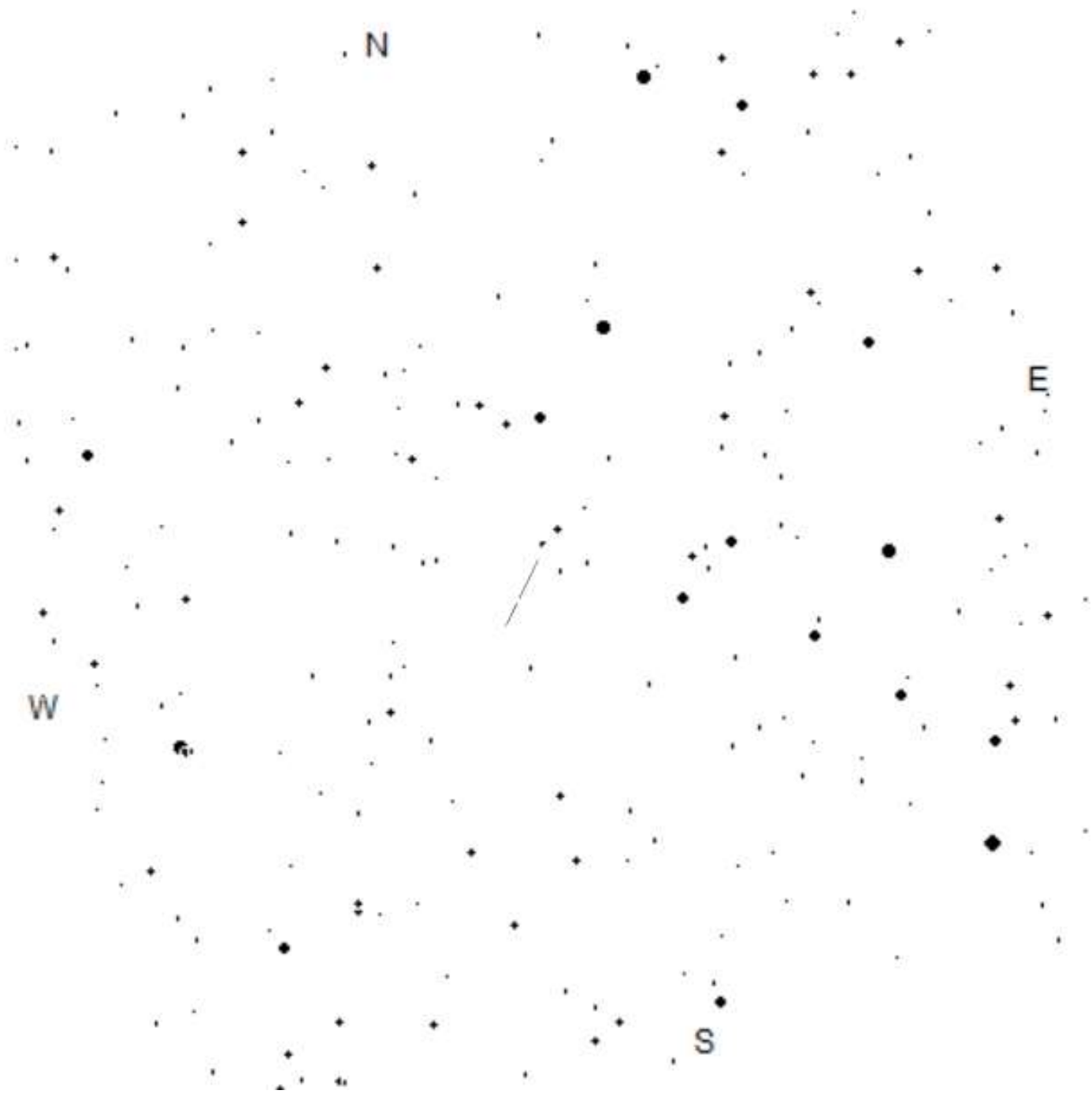


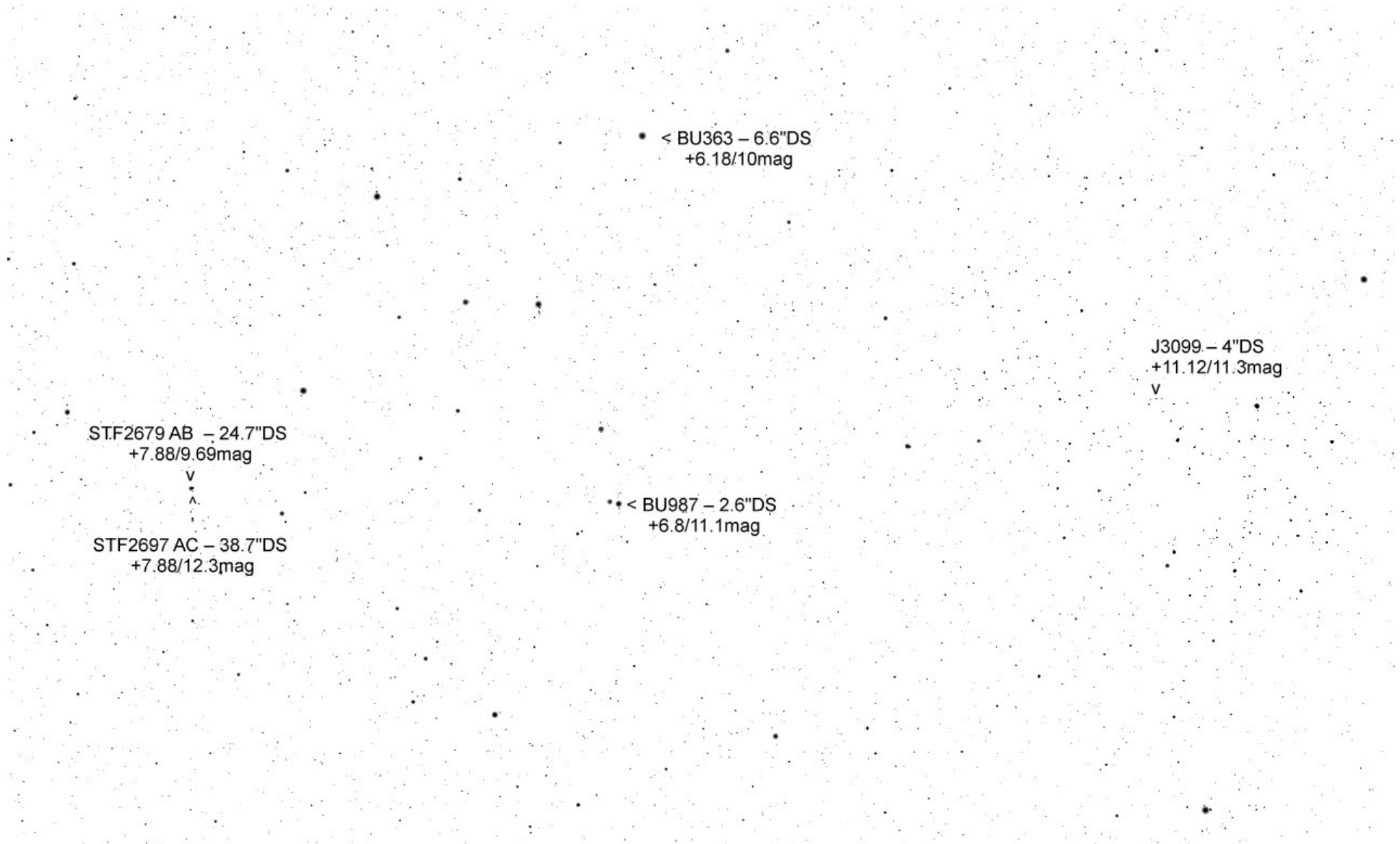
TML Alpha Del per Mitte September 15' FoV











STF2679 AB – 24.7"DS
+7.88/9.69mag

v
^

STF2697 AC – 38.7"DS
+7.88/12.3mag

< BU363 – 6.6"DS
+6.18/10mag

** < BU987 – 2.6"DS
+6.8/11.1mag

J3099 – 4"DS
+11.12/11.3mag
v