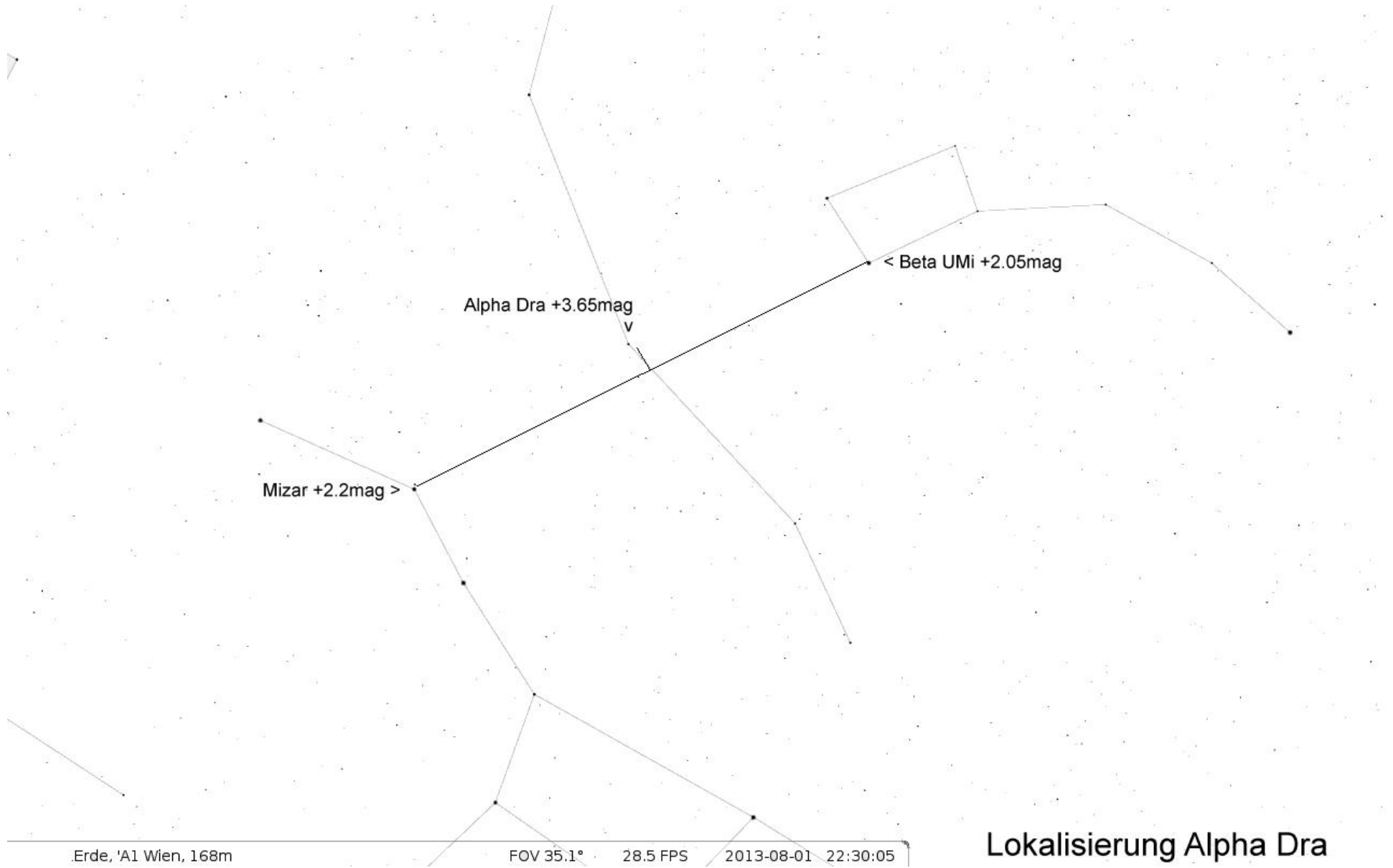
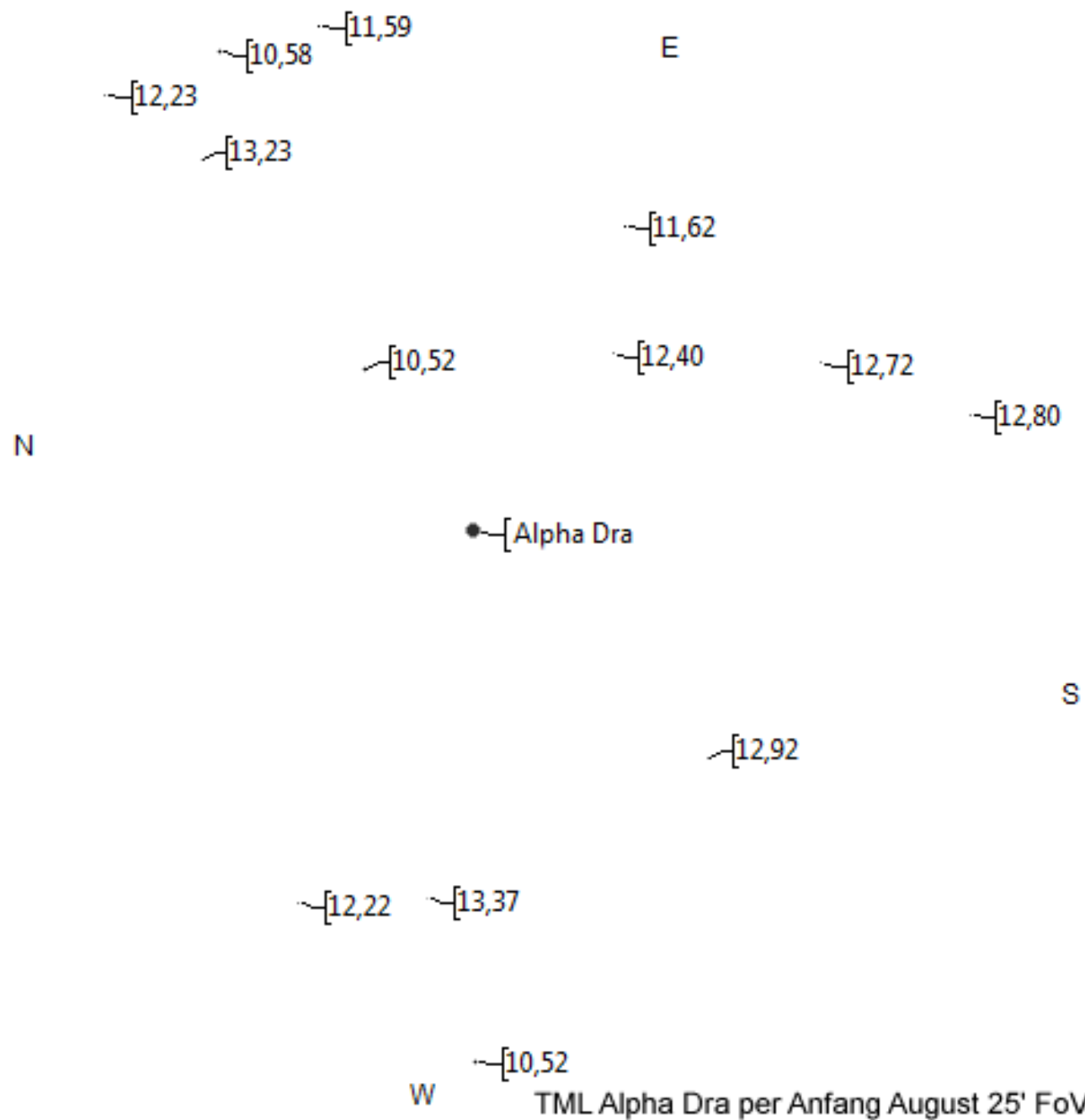
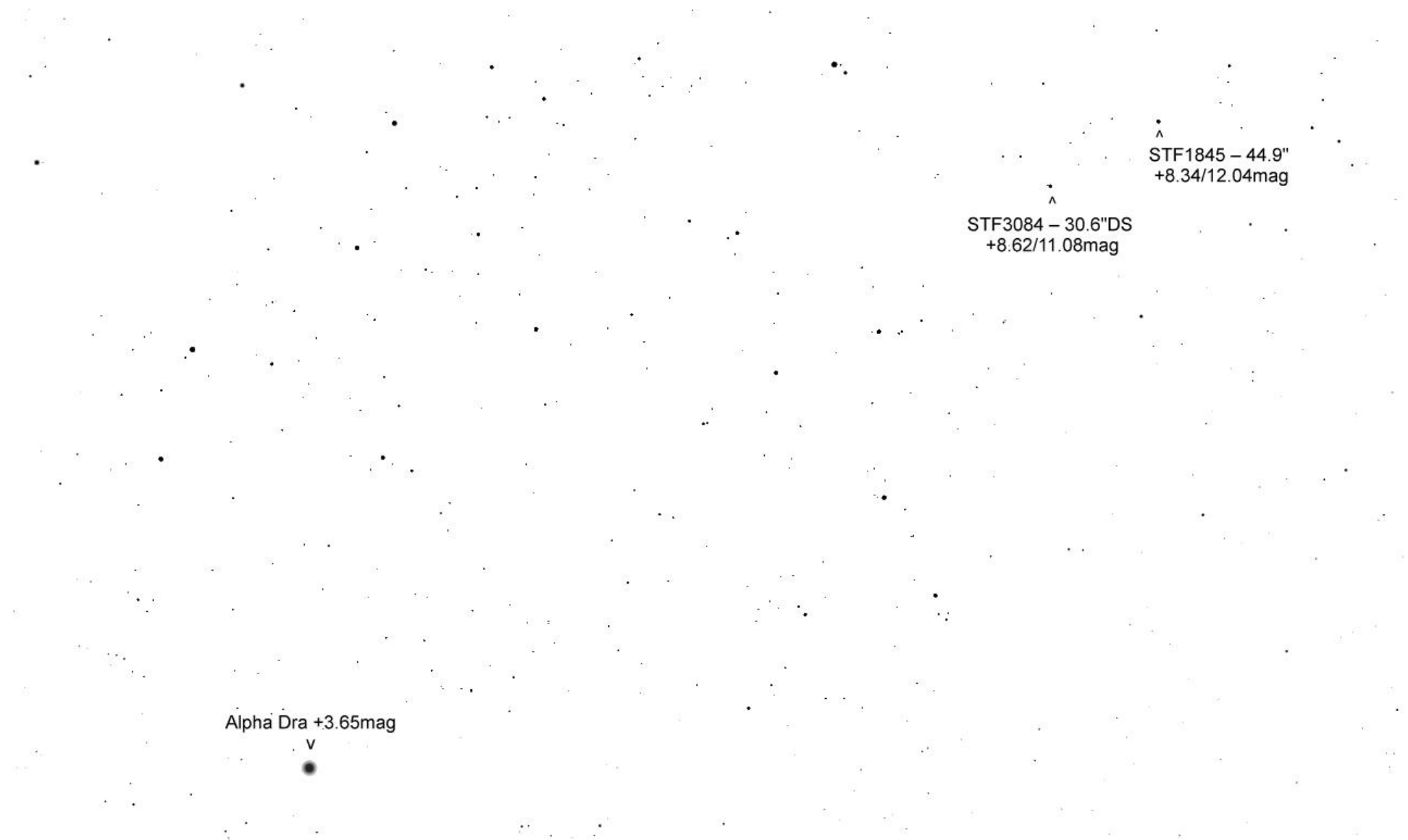


Drache



Lokalisierung Alpha Dra

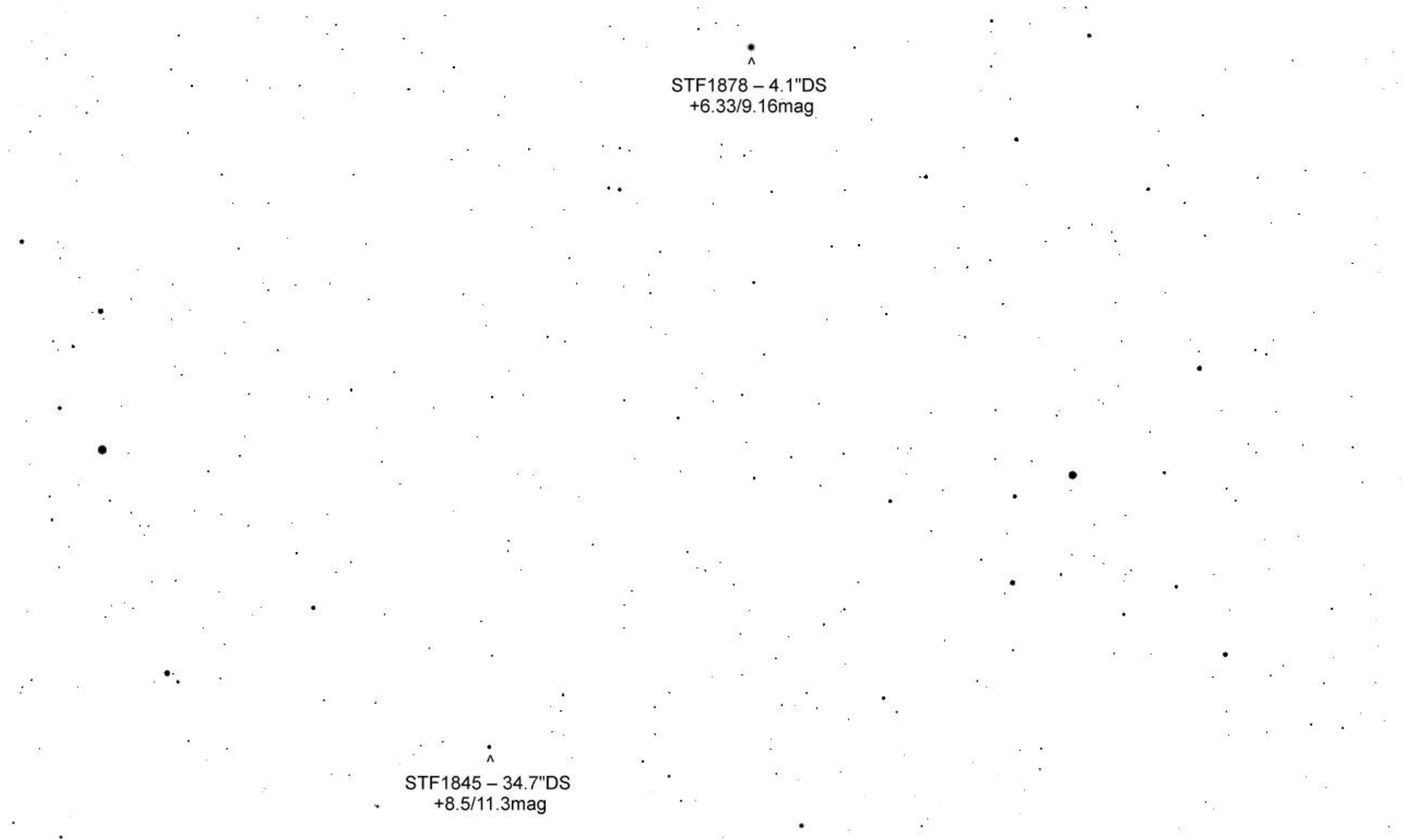




STF1845 - 44.9"
+8.34/12.04mag

STF3084 - 30.6"DS
+8.62/11.08mag

Alpha Dra +3.65mag



STF1878 - 4.1"DS
+6.33/9.16mag

STF1845 - 34.7"DS
+8.5/11.3mag

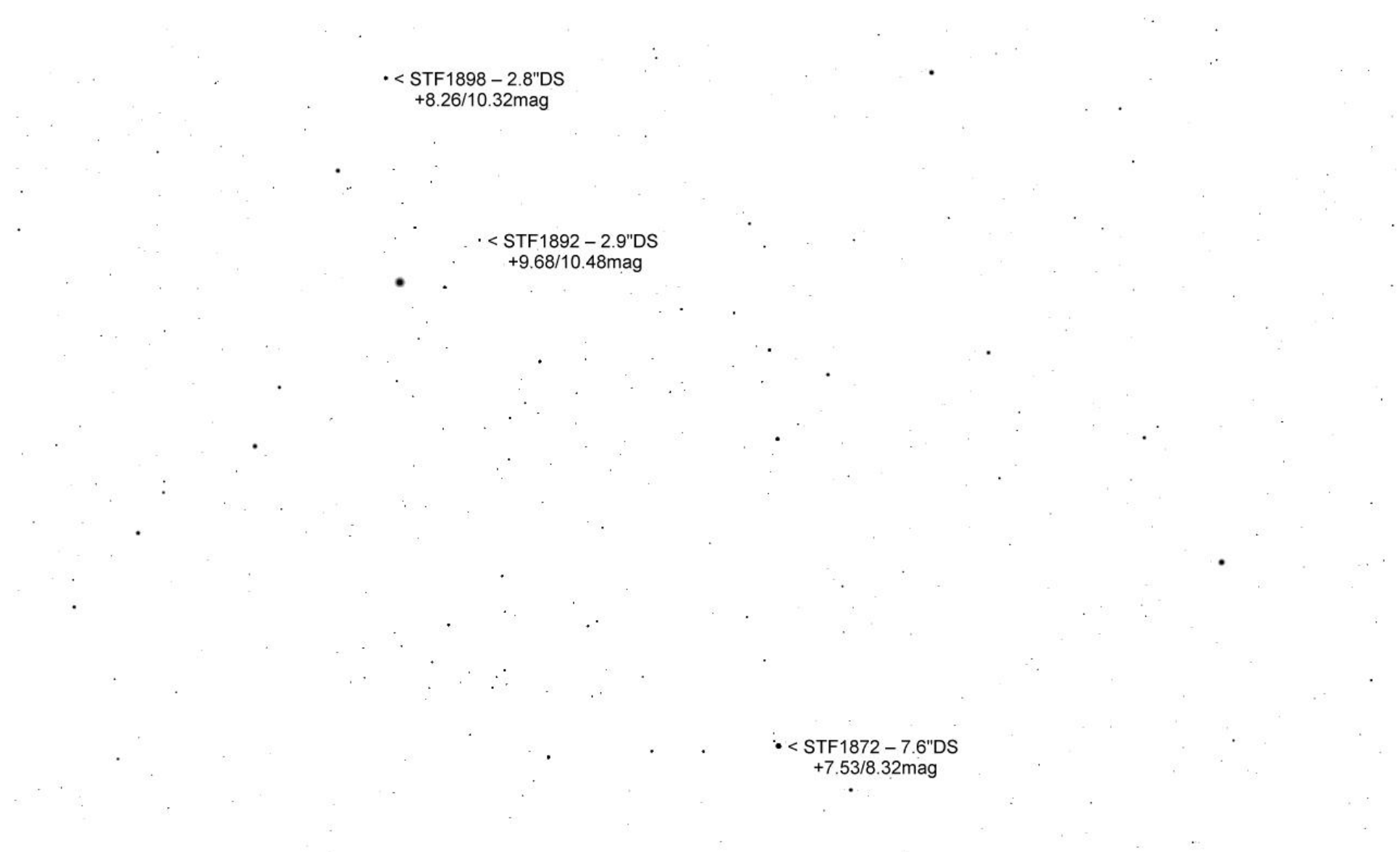
• < STF1898 – 2.8"DS
+8.26/10.32mag

• < STF1892 – 2.9"DS
+9.68/10.48mag

STF1882 – 11.5"DS
+6.92/9.23mag

v

^
STF1878 – 4.1"DS
+6.33/9.16mag



• < STF1898 – 2.8"DS
+8.26/10.32mag

• < STF1892 – 2.9"DS
+9.68/10.48mag

• < STF1872 – 7.6"DS
+7.53/8.32mag

