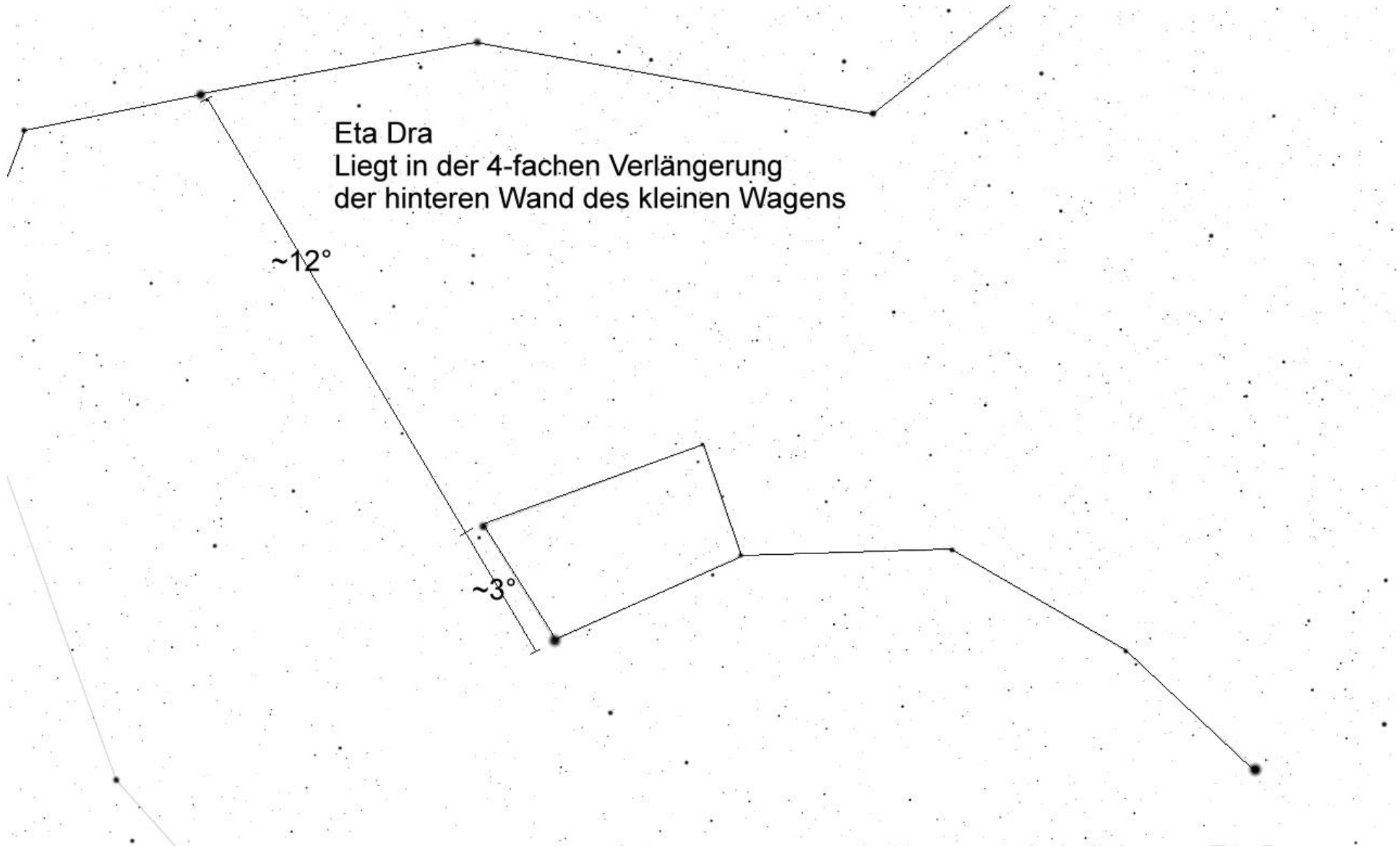


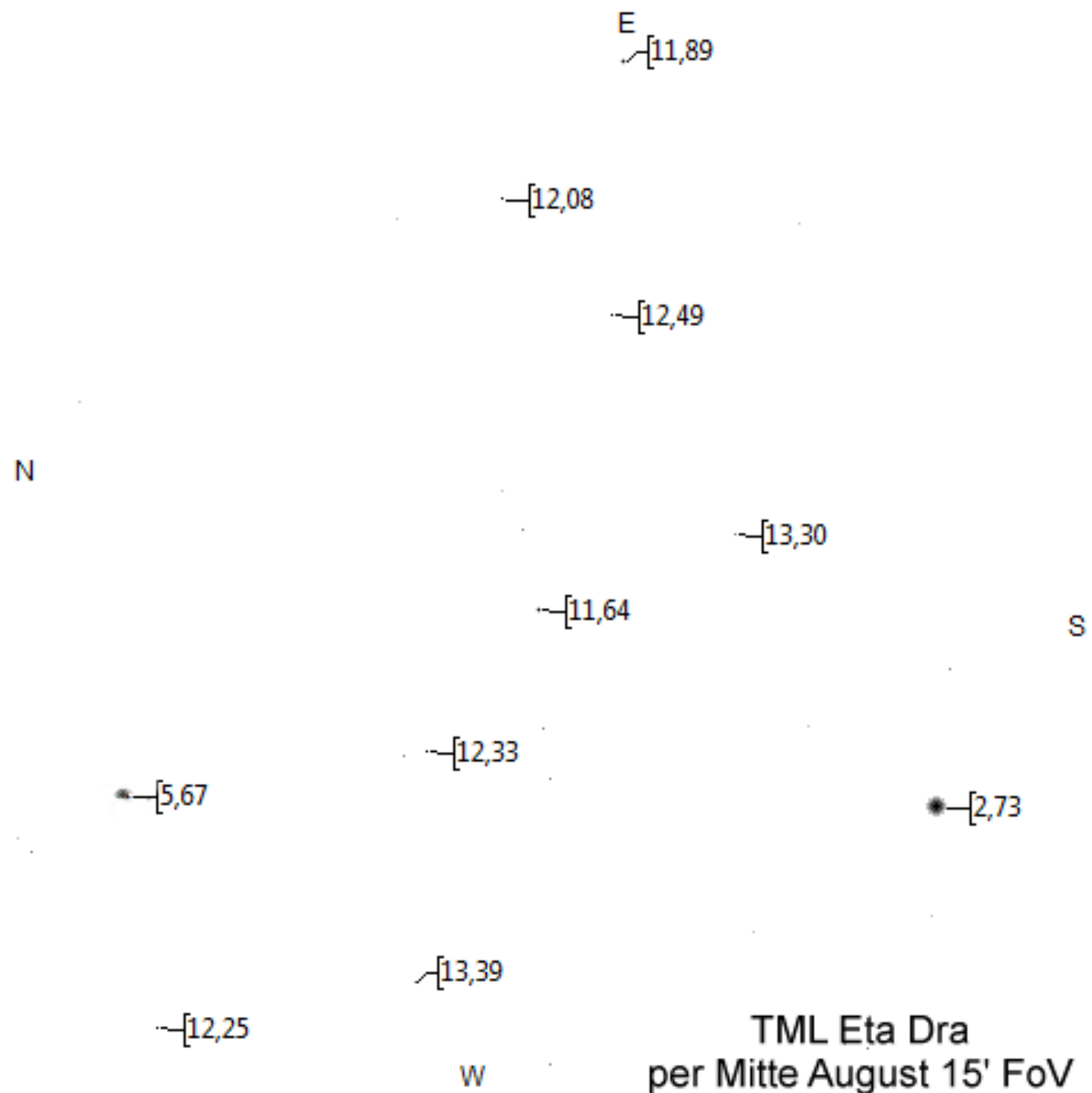
Drache

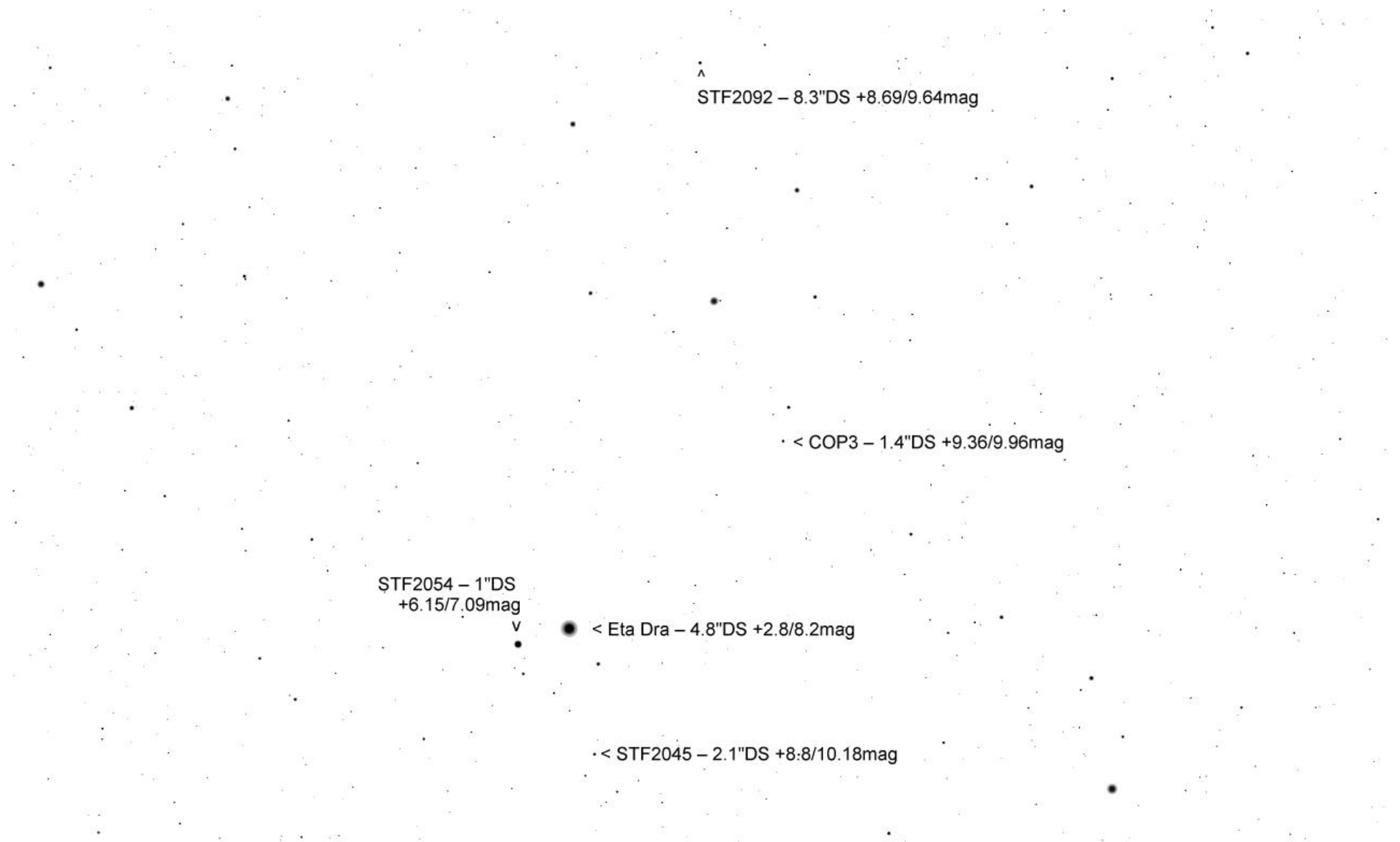


Eta Dra
Liegt in der 4-fachen Verlängerung
der hinteren Wand des kleinen Wagens

~12°

~3°





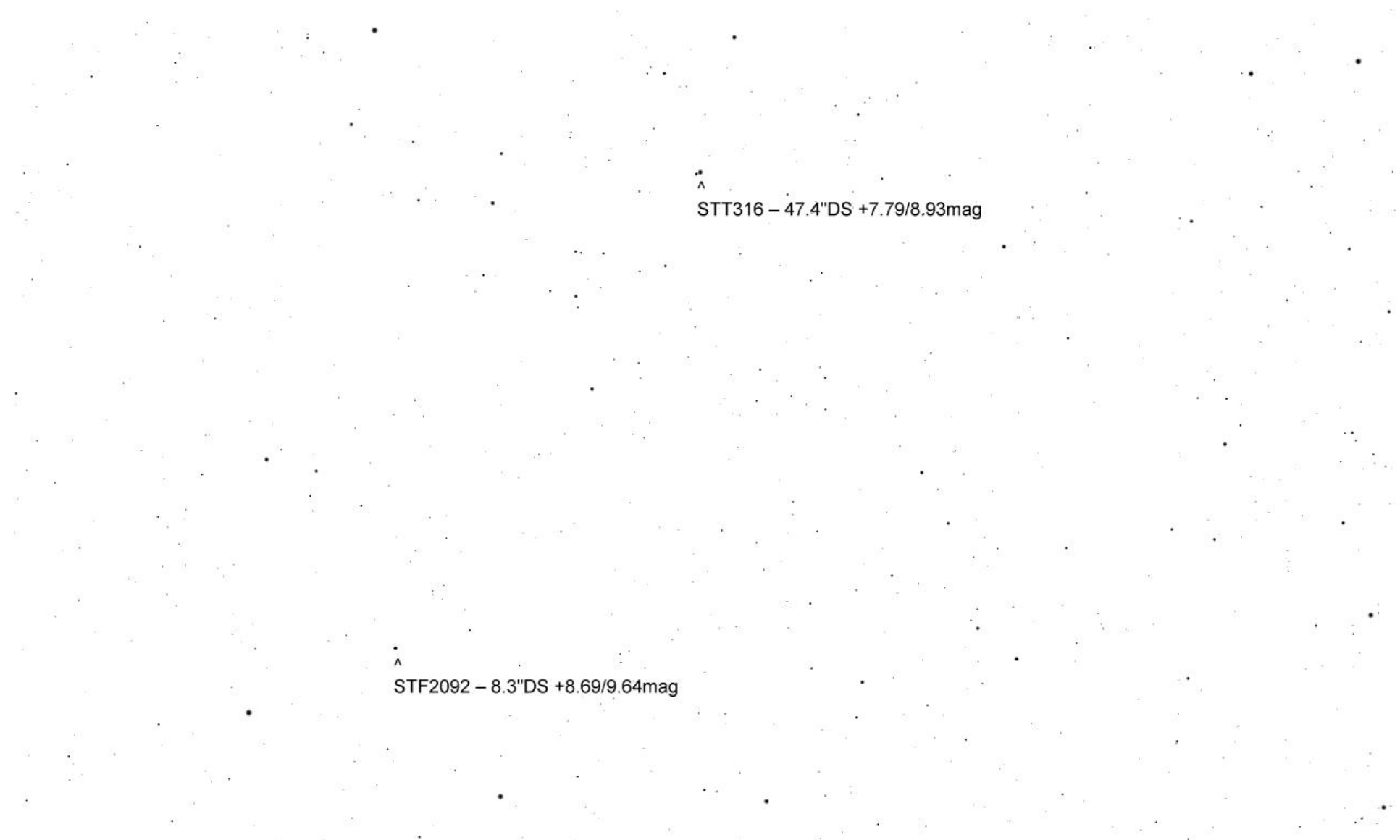
Λ
STF2092 – 8.3"DS +8.69/9.64mag

· < COP3 – 1.4"DS +9.36/9.96mag

STF2054 – 1"DS
+6.15/7.09mag

● < Eta Dra – 4.8"DS +2.8/8.2mag

· < STF2045 – 2.1"DS +8.8/10.18mag



STT316 – 47.4"DS +7.79/8.93mag

STF2092 – 8.3"DS +8.69/9.64mag

^
STT316 – 47.4"DS +7.79/8.93mag

• < HDS2371 – 0.9"DS
+8.11/11.27mag

YNG1 – 1.2"DS
+8.55/9.78mag
v



λ
STF2108 – 26.7"DS
+8.97/11.24mag

• < HDS2371 – 0.9"DS
+8.11/11.27mag

STF2078 – 3"DS
+5.38/6.42mag

v