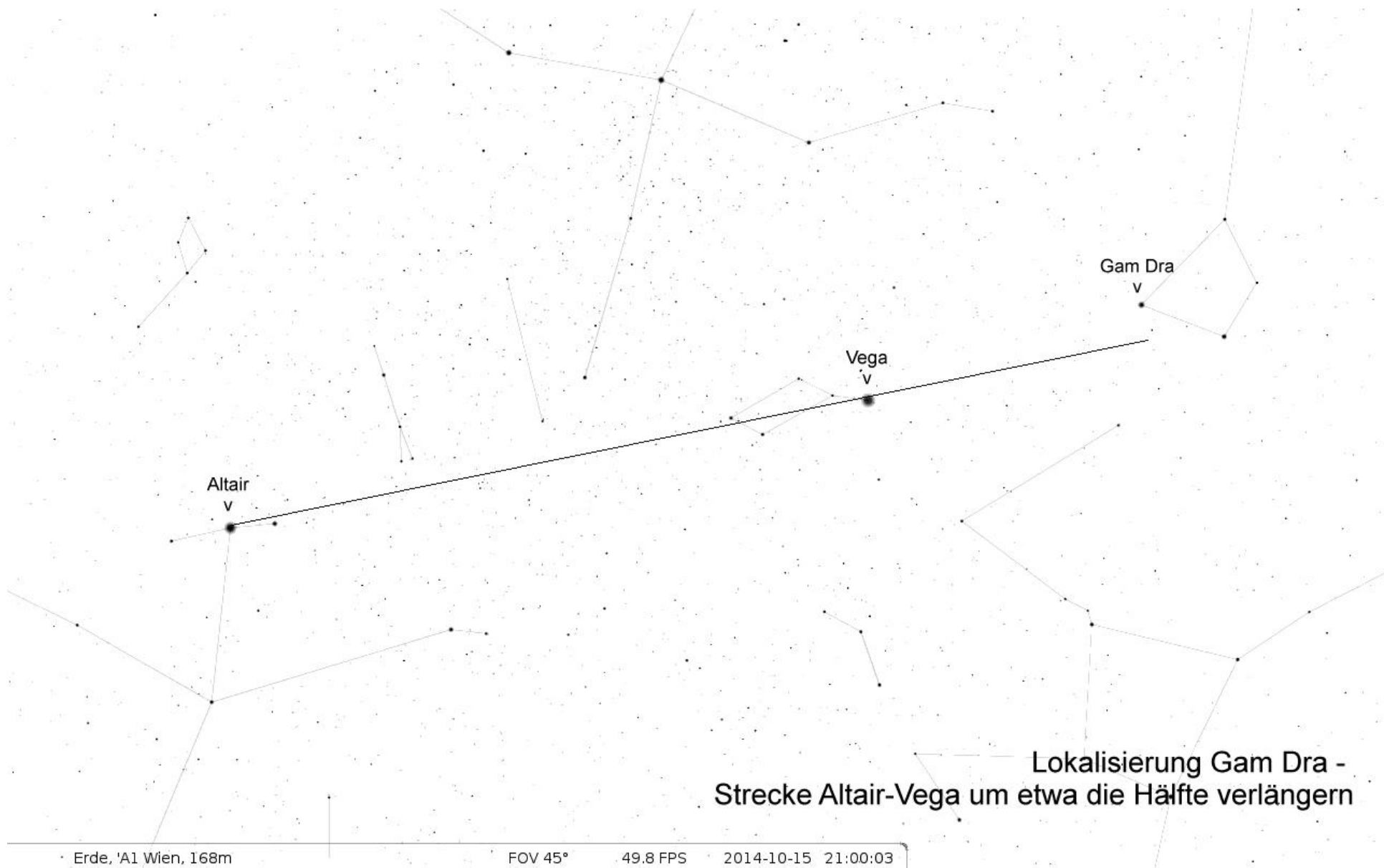
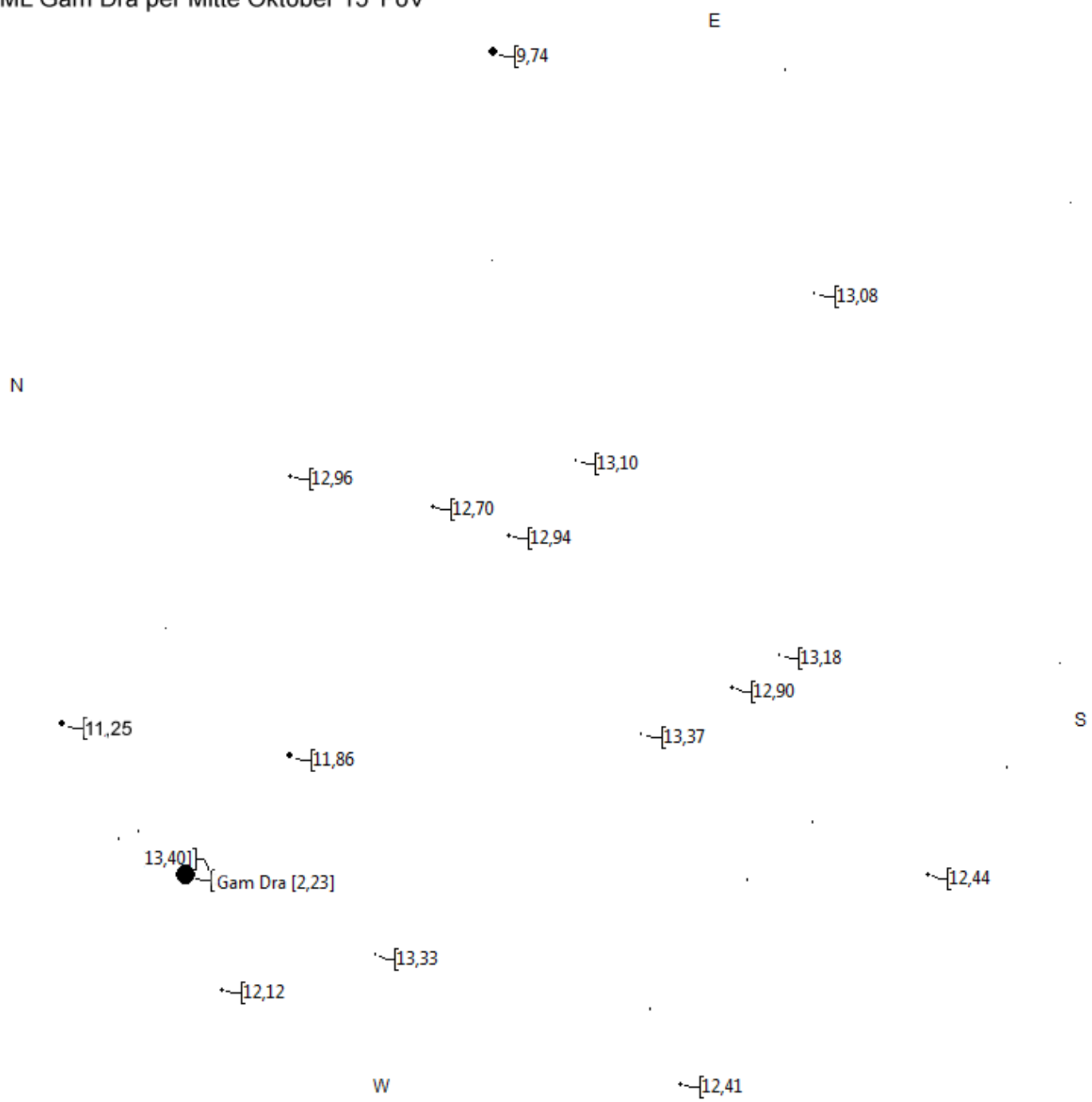


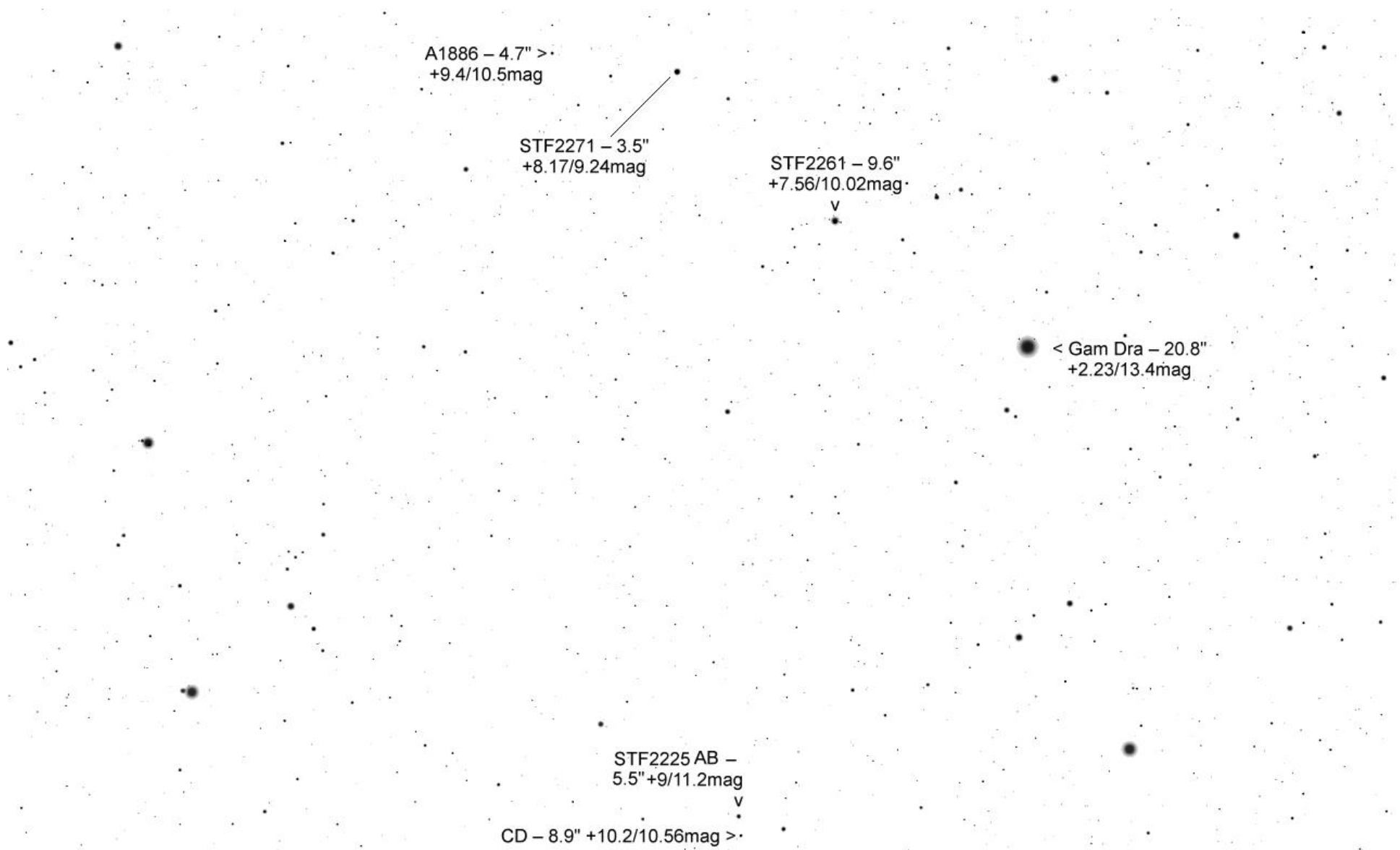
Drache



Lokalisierung Gam Dra -
Strecke Altair-Vega um etwa die Hälfte verlängern

TML Gam Dra per Mitte Oktober 15' FoV





• < STF2278 AB – 36" +7.78/8.14mag
BC – 6" +8.14/8.53mag

A1886 – 4.7" >
+9.4/10.5mag

STF2271 – 3.5"
+8.17/9.24mag
v

^
HO71 – 3.7"
+9.2/9.6mag

^
HO71 - 3.7"
+9.2/9.6mag

STF2199 - 1.9"
+8.03/8.6mag

v

STFA35 - 62"
+4.87/4.9mag

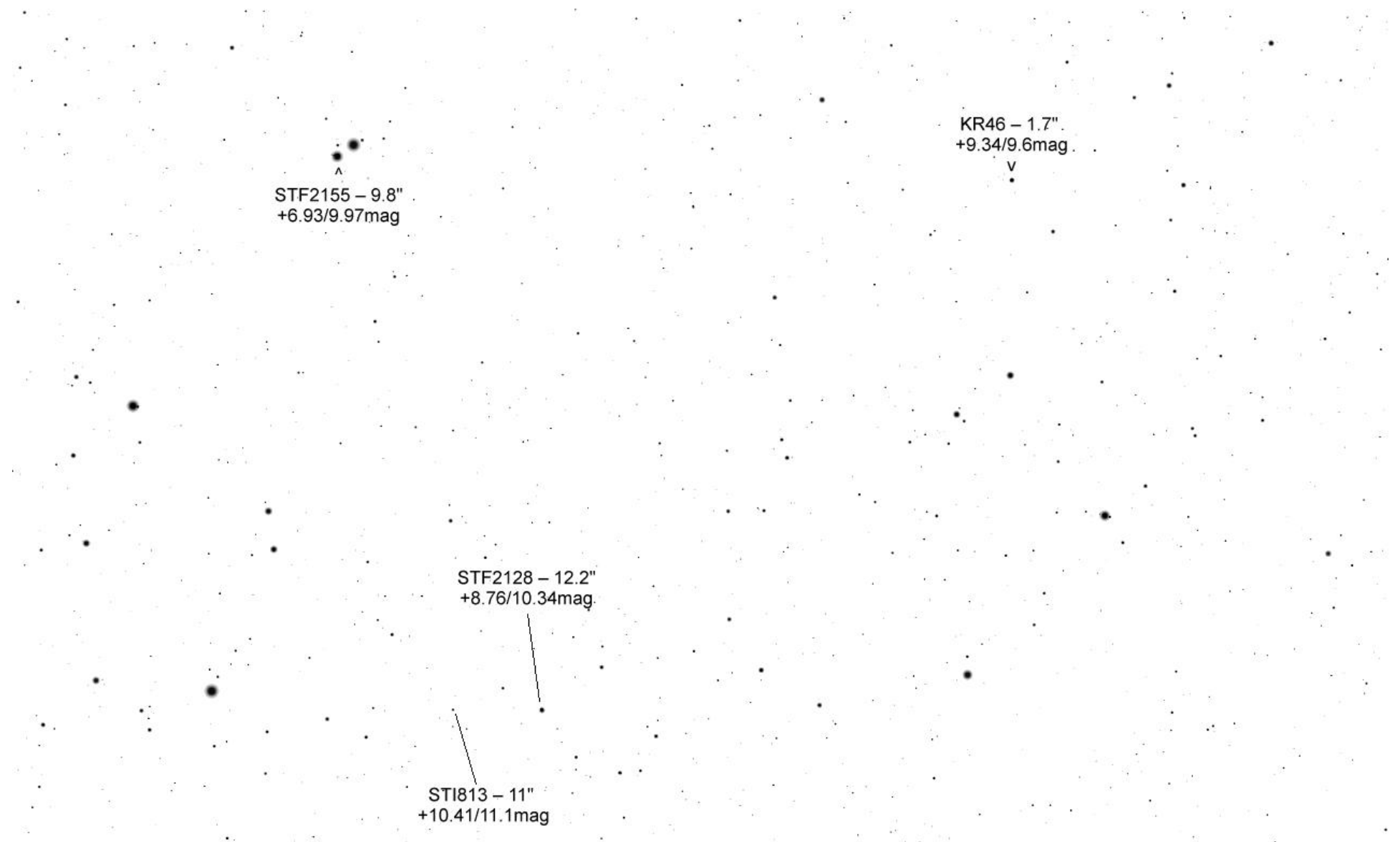
v



KR46 – 1.7"
+9.34/9.6mag
v

A
A1151 – 1.1"
+9.31/10.54mag

STFA35 – 62"
+4.87/4.9mag
v



STF2155 – 9.8"
+6.93/9.97mag

KR46 – 1.7"
+9.34/9.6mag

STF2128 – 12.2"
+8.76/10.34mag

STI813 – 11"
+10.41/11.1mag