

Herkules

Lokalisierung via Schlangenträger - bildet mit Alpha Oph +2.05mag und Kappa Oph +3.15mag ein flaches gleichschenkeliges Dreieck

Alpha Her
+3.35mag

Alpha Oph
+2.05mag

Kappa Oph
+3.15mag

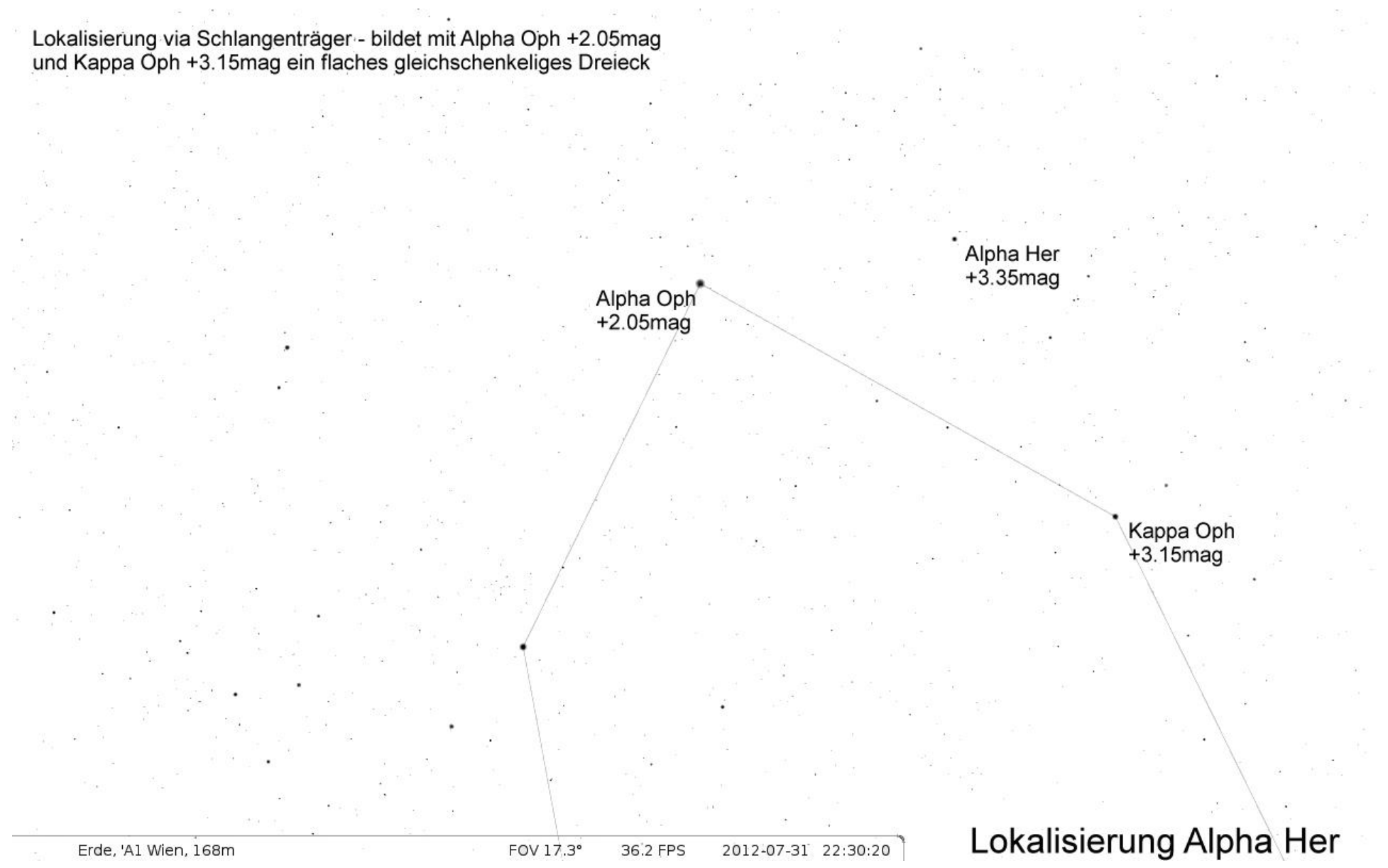
Lokalisierung Alpha Her

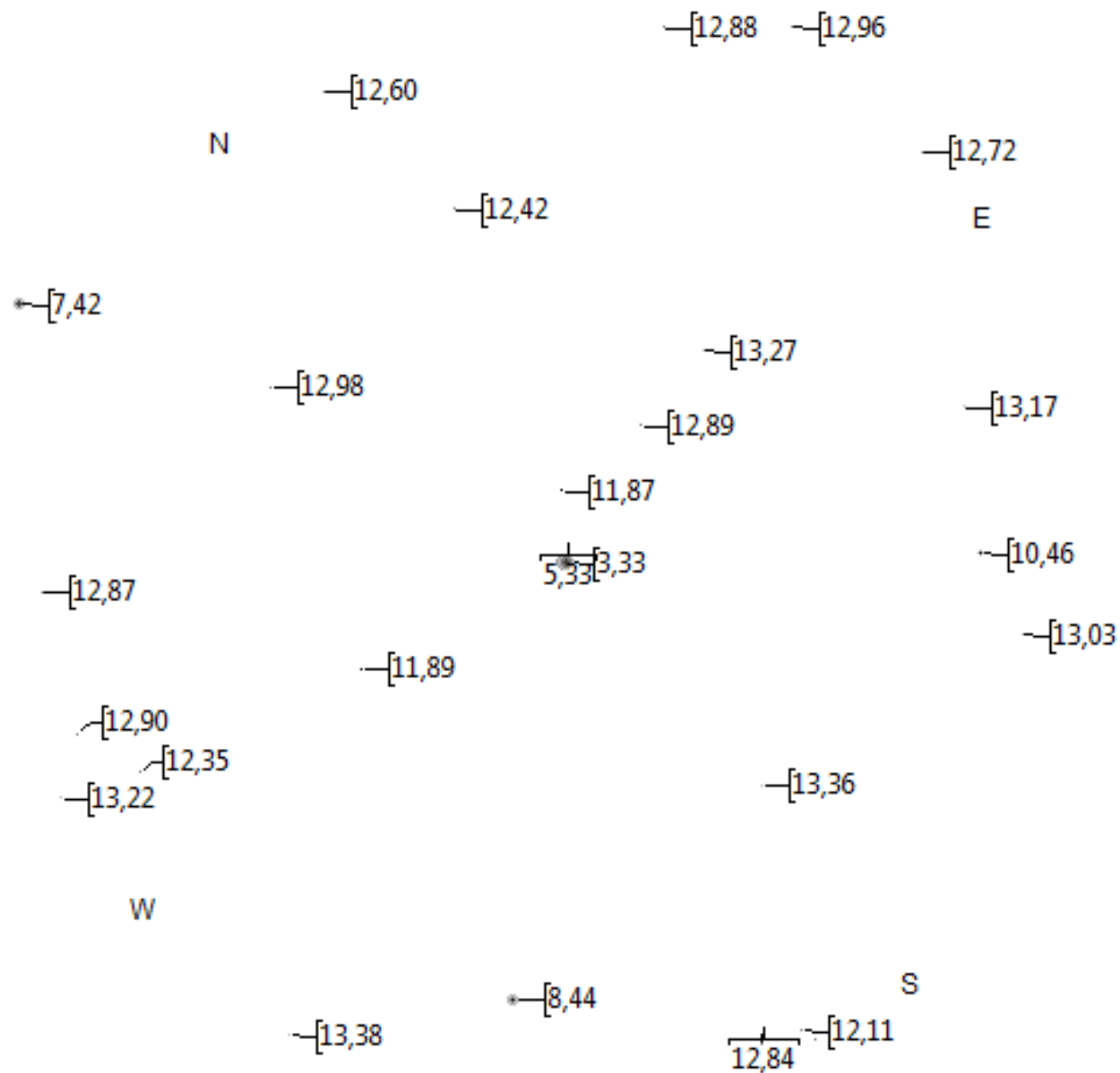
Erde, 'A1 Wien, 168m

FOV 17.3°

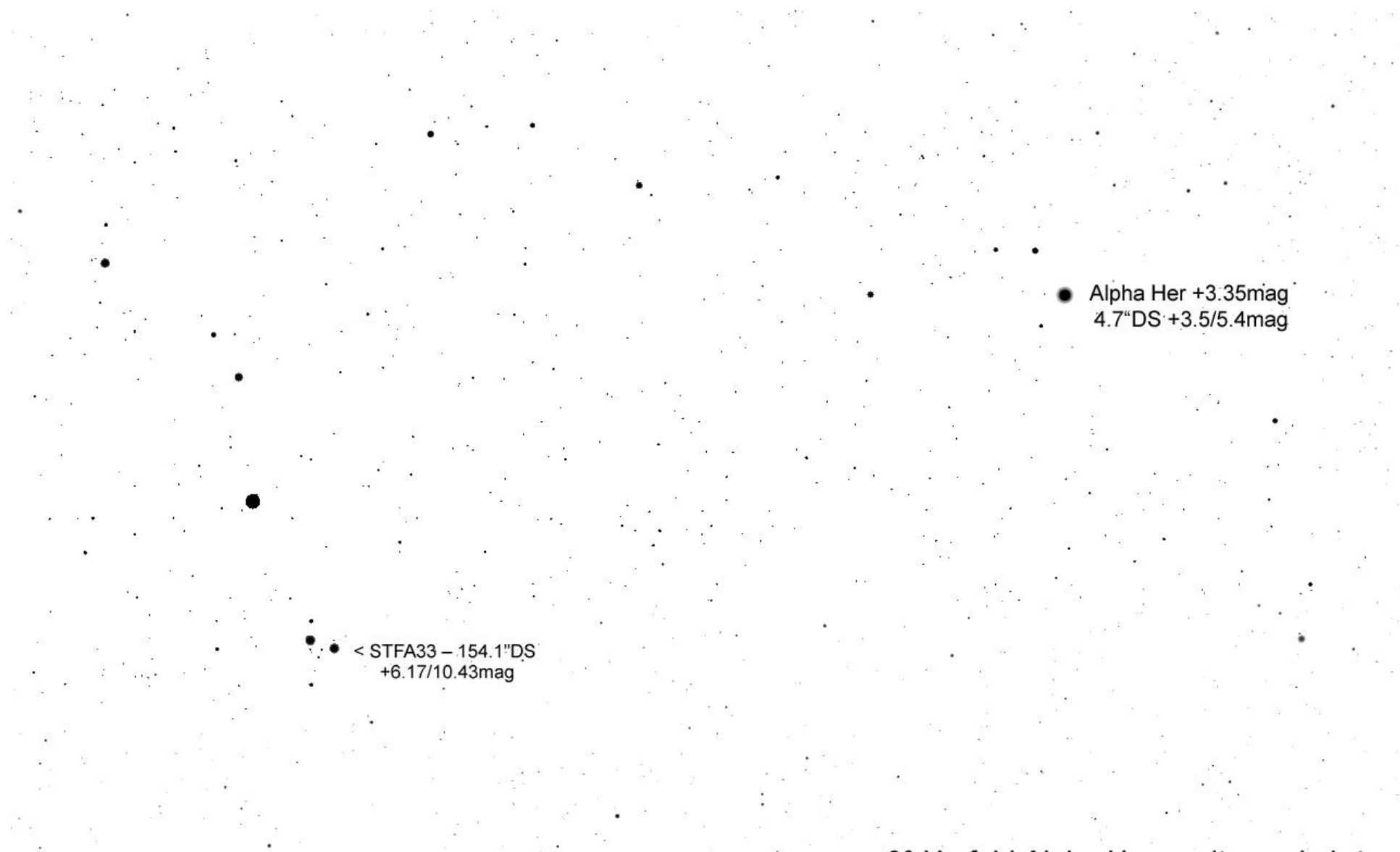
36.2 FPS

2012-07-31 22:30:20



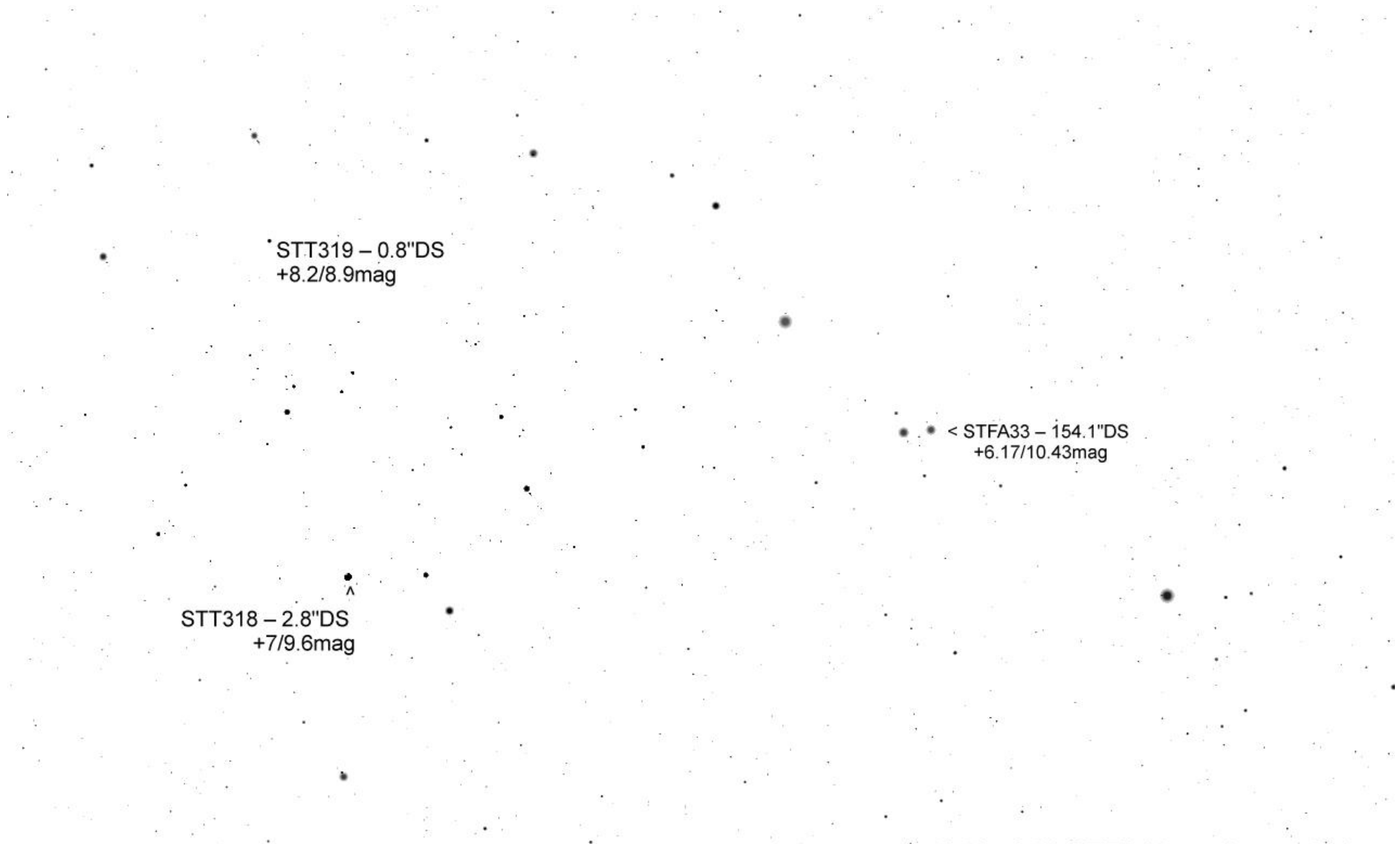


TML Alpha Her per Mitte August 20' FoV



● Alpha Her +3.35mag
4.7"DS +3.5/5.4mag

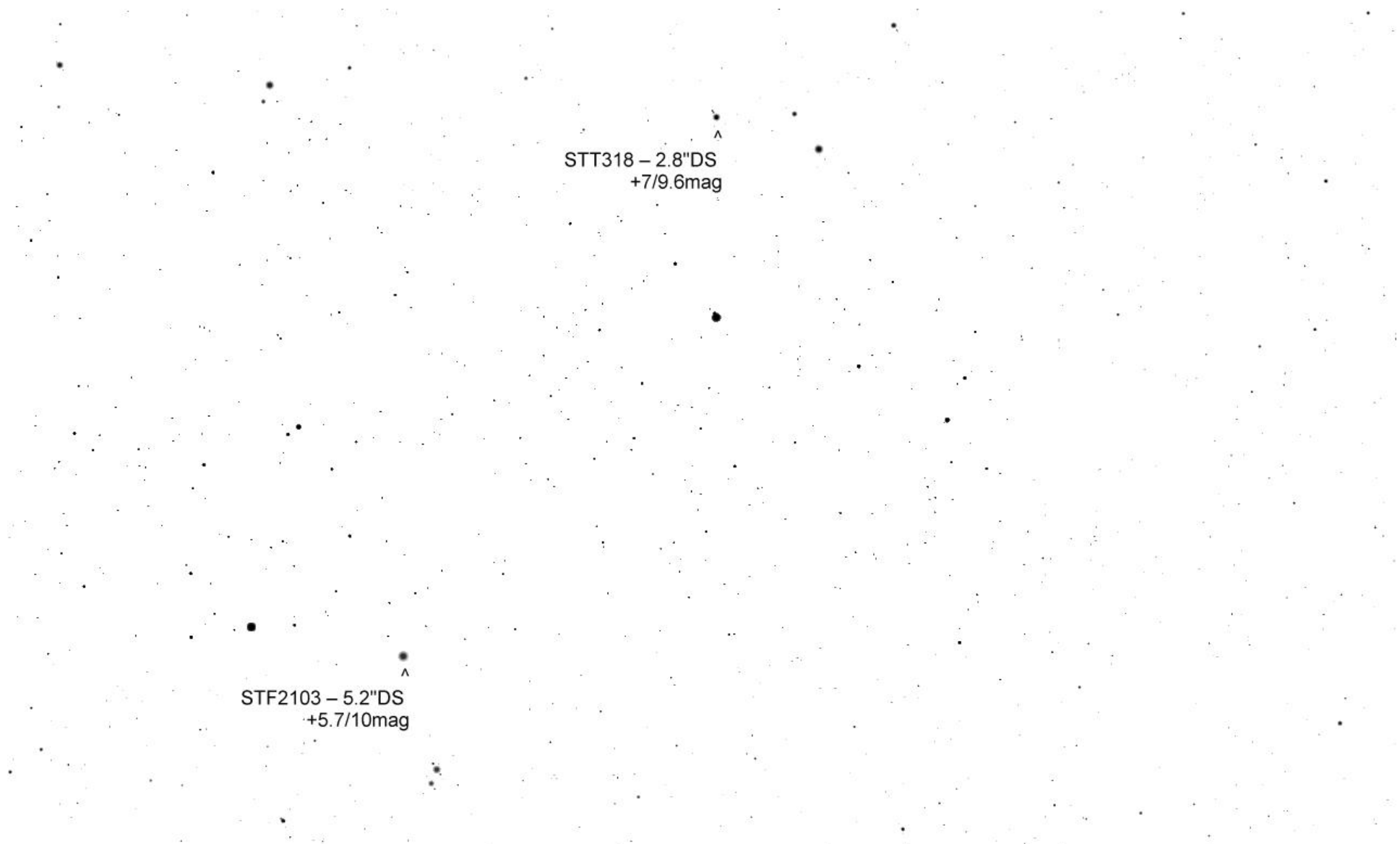
● ● < STFA33 - 154.1"DS
+6.17/10.43mag



STT319 – 0.8"DS
+8.2/8.9mag

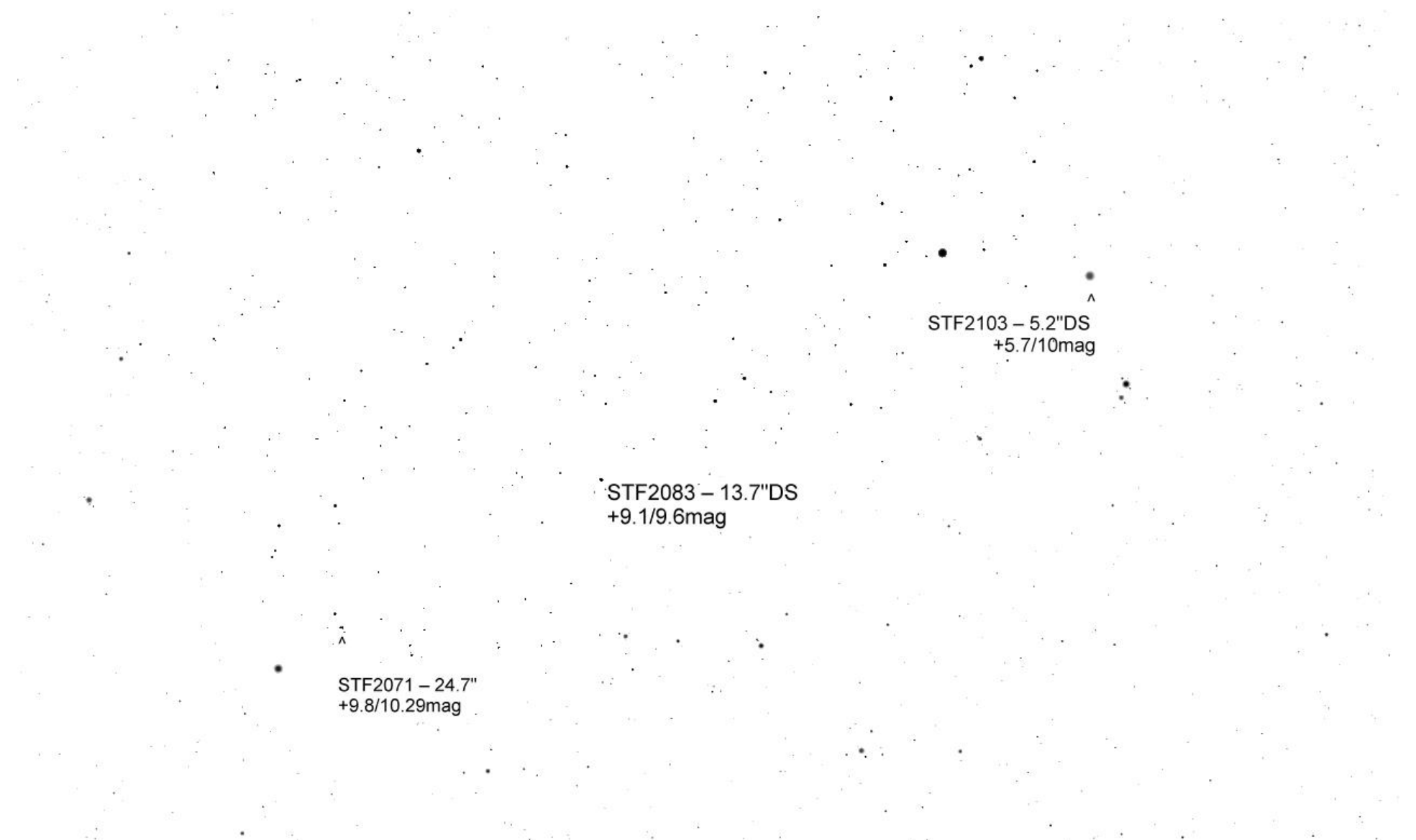
< STFA33 – 154.1"DS
+6.17/10.43mag

STT318 – 2.8"DS
+7/9.6mag



STT318 – 2.8"DS
+7/9.6mag

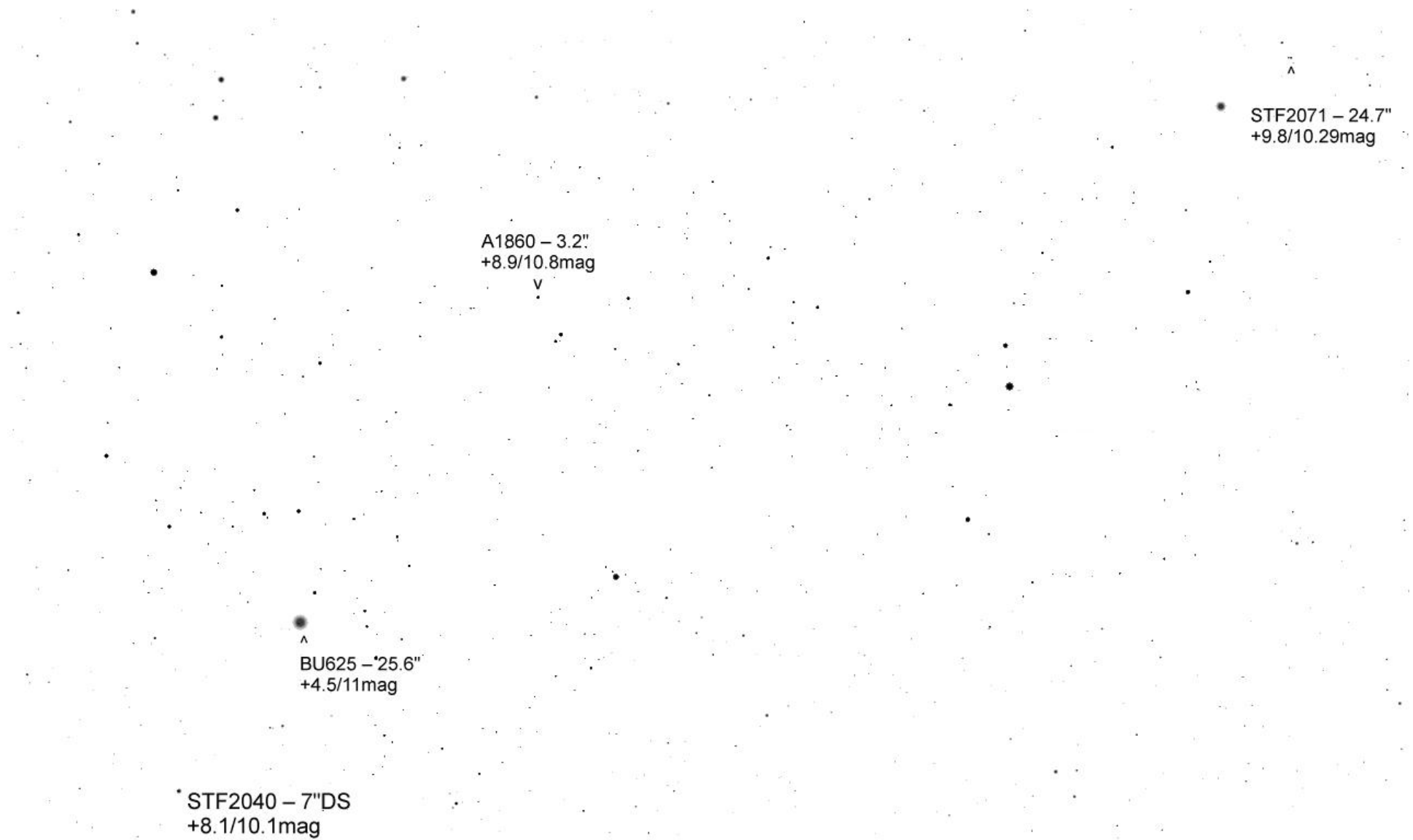
STF2103 – 5.2"DS
+5.7/10mag



STF2071 – 24.7"
+9.8/10.29mag

STF2083 – 13.7"DS
+9.1/9.6mag

STF2103 – 5.2"DS
+5.7/10mag



STF2071 – 24.7"
+9.8/10.29mag

A1860 – 3.2"
+8.9/10.8mag

BU625 – 25.6"
+4.5/11mag

STF2040 – 7"DS
+8.1/10.1mag

• STF2040 – 7"DS
+8.1/10.1mag

• STF2051 – 13.9"DS
+7.7/9.4mag