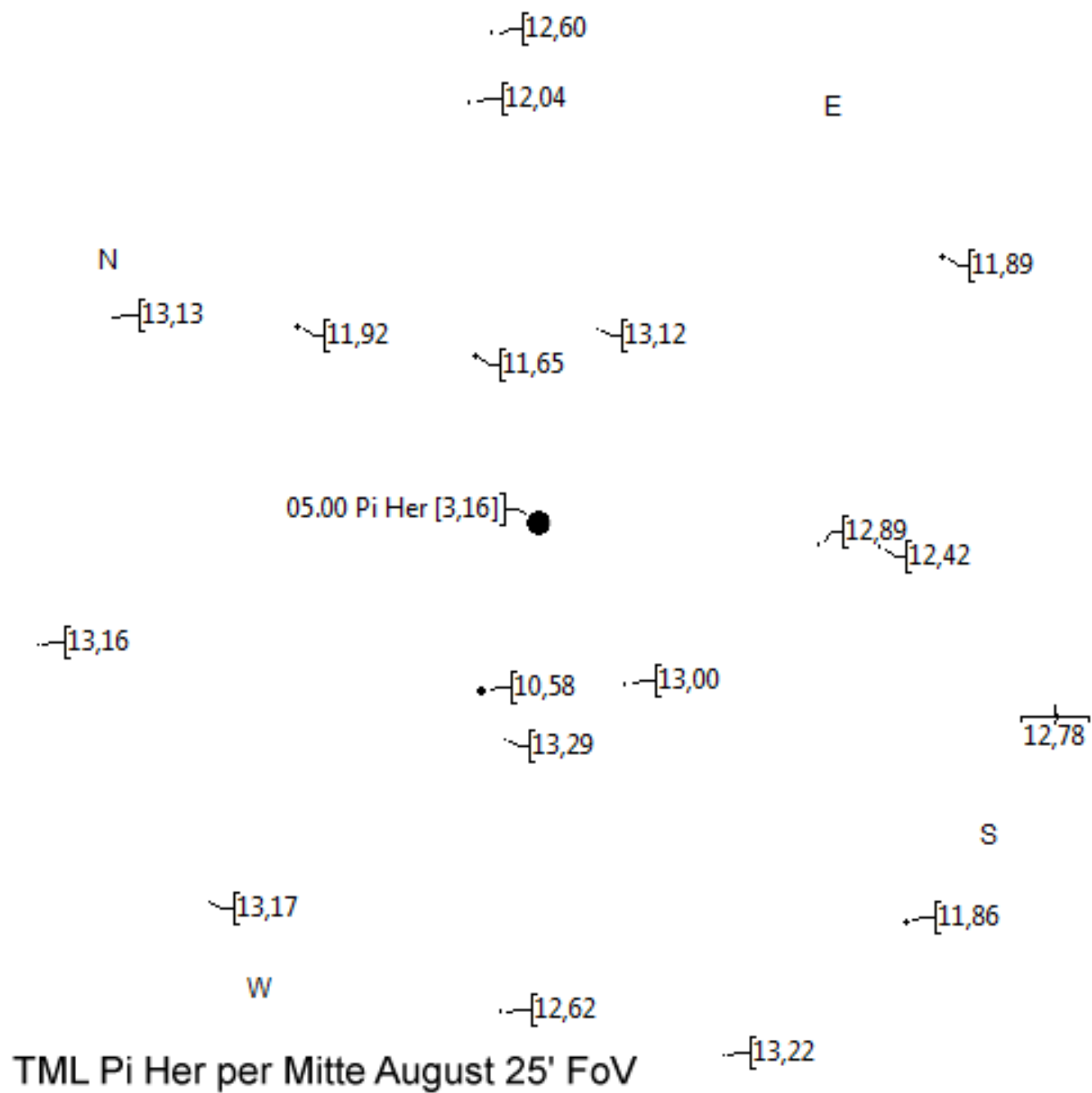
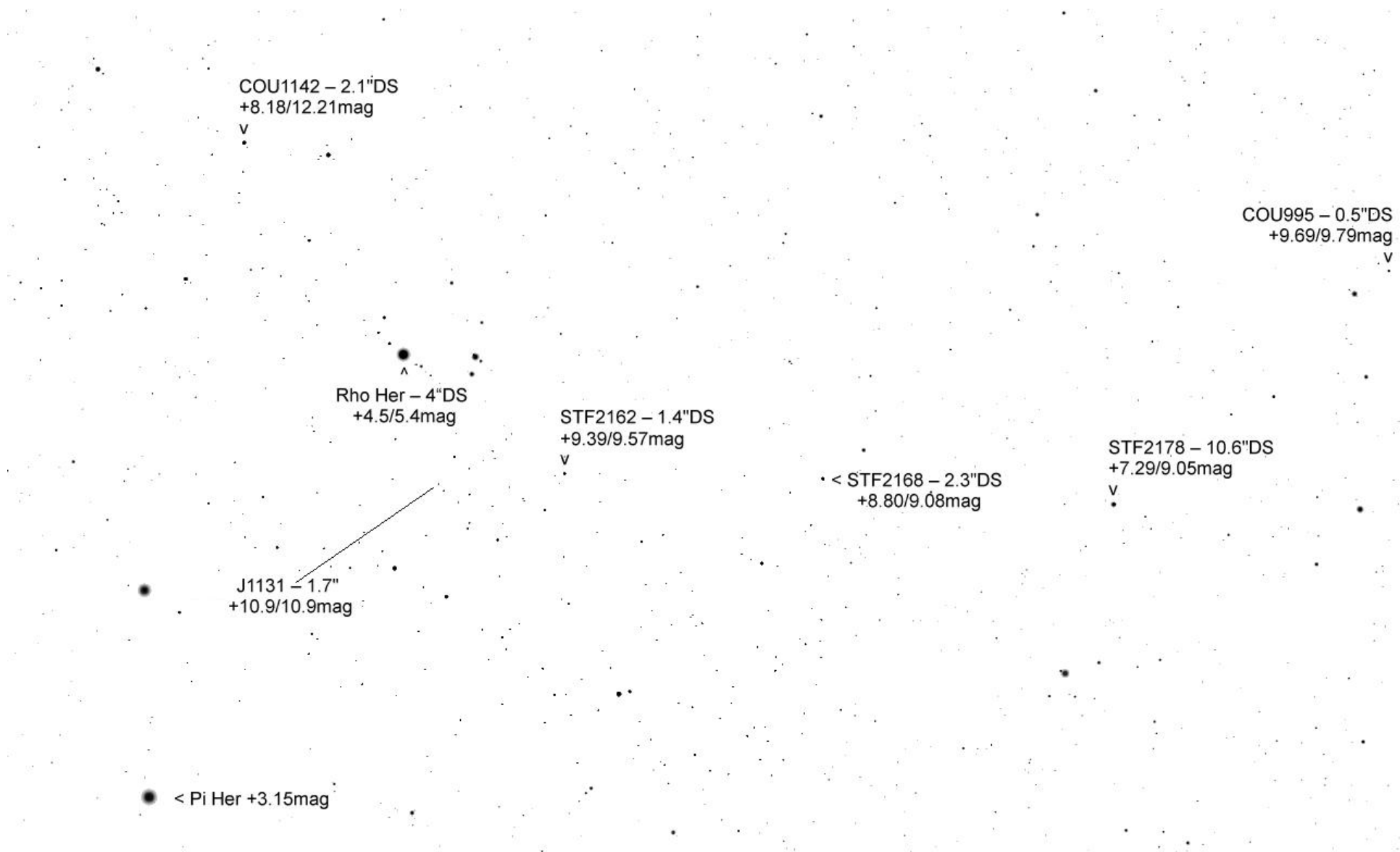
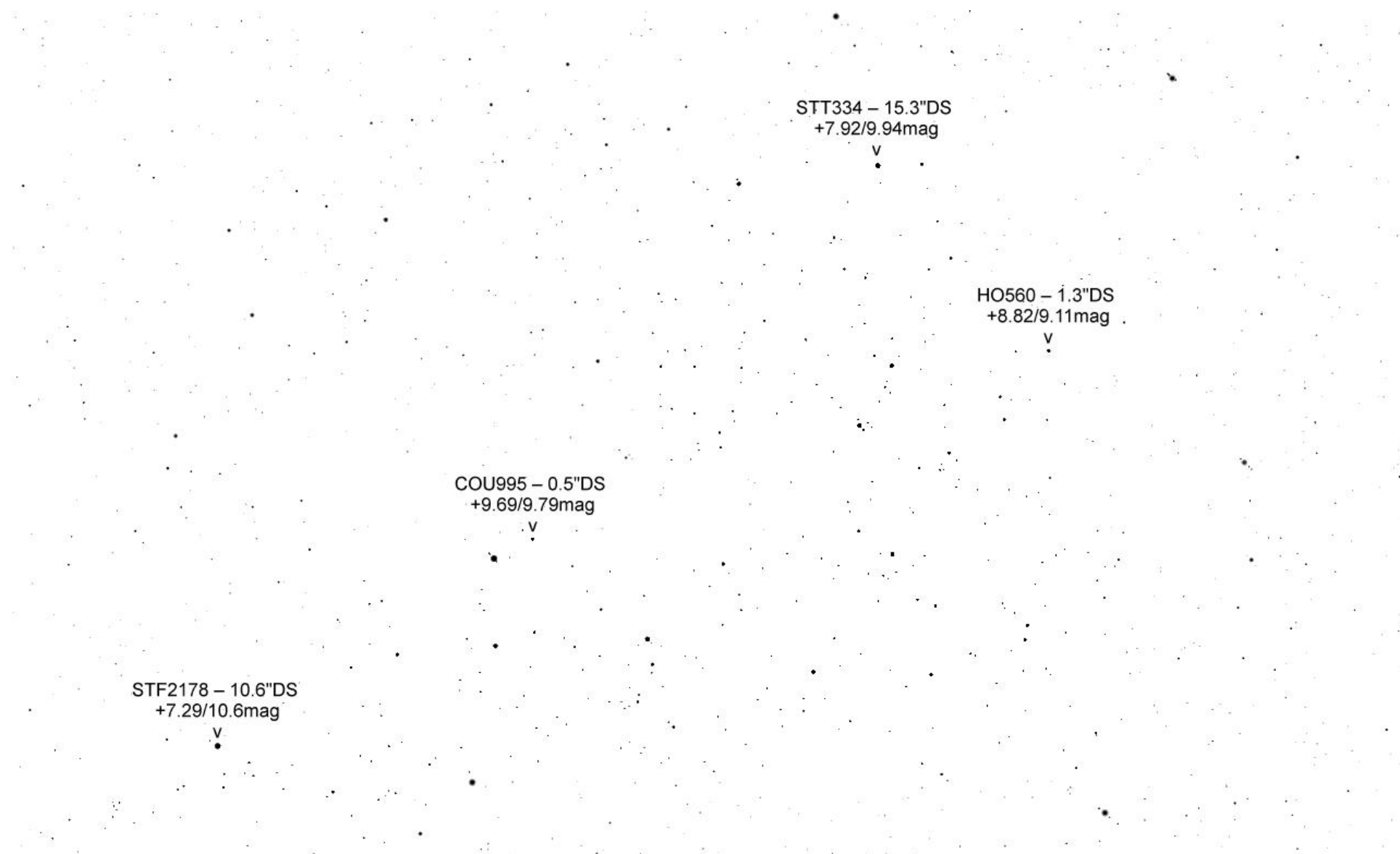


# Herkules



TML Pi Her per Mitte August 25' FoV



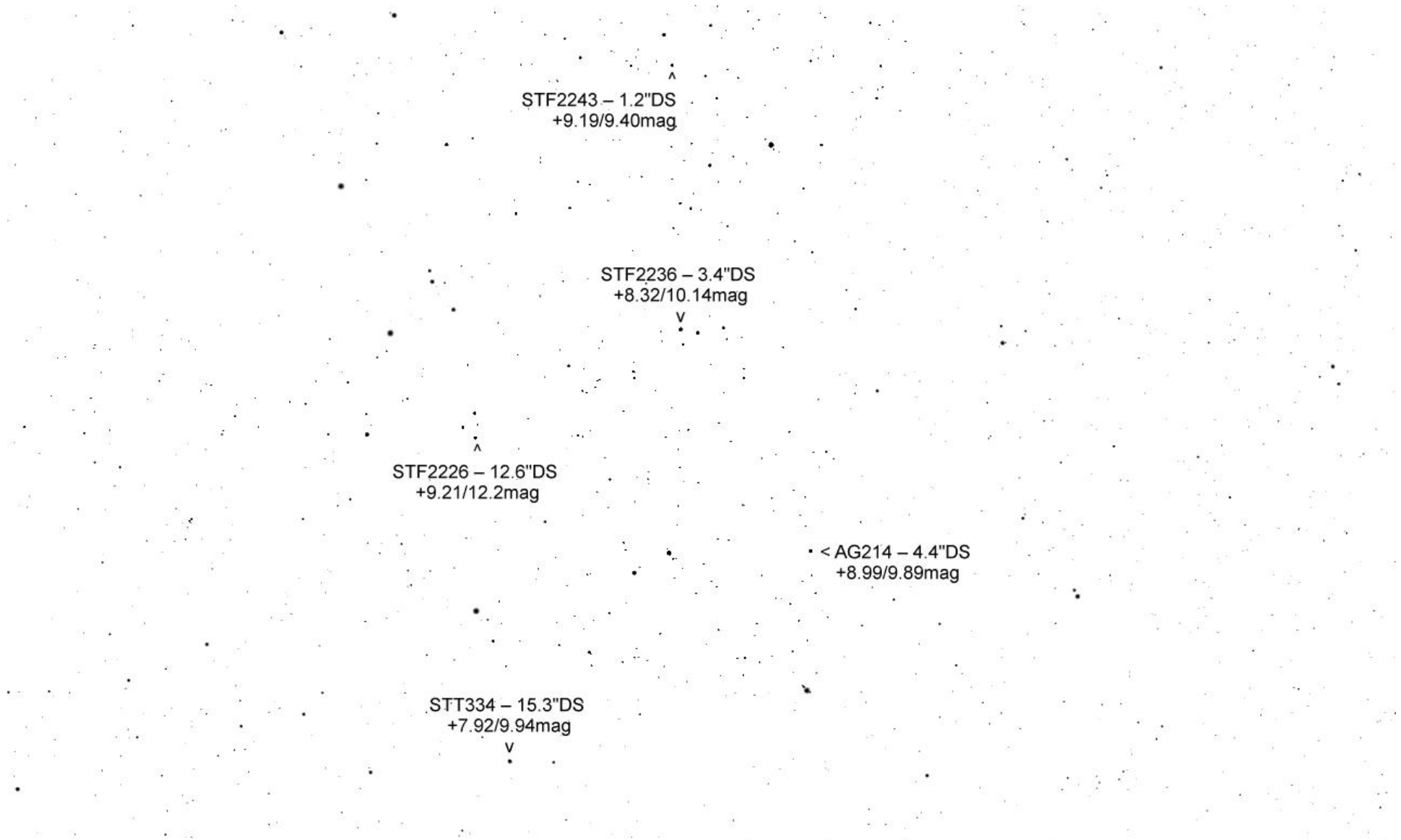


STF2178 – 10.6"DS  
+7.29/10.6mag

COU995 – 0.5"DS  
+9.69/9.79mag

STT334 – 15.3"DS  
+7.92/9.94mag

HO560 – 1.3"DS  
+8.82/9.11mag



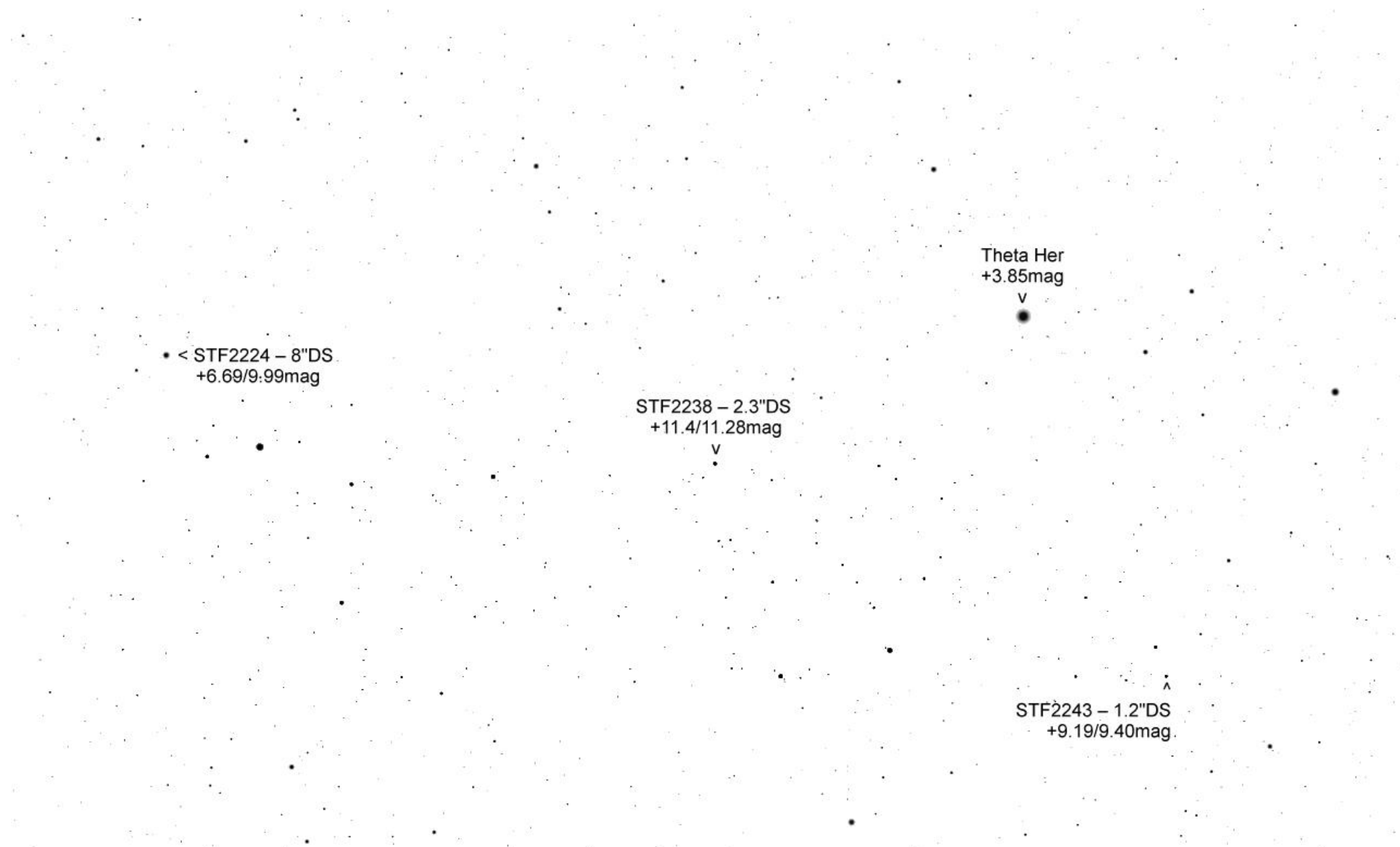
STF2243 – 1.2"DS  
+9.19/9.40mag

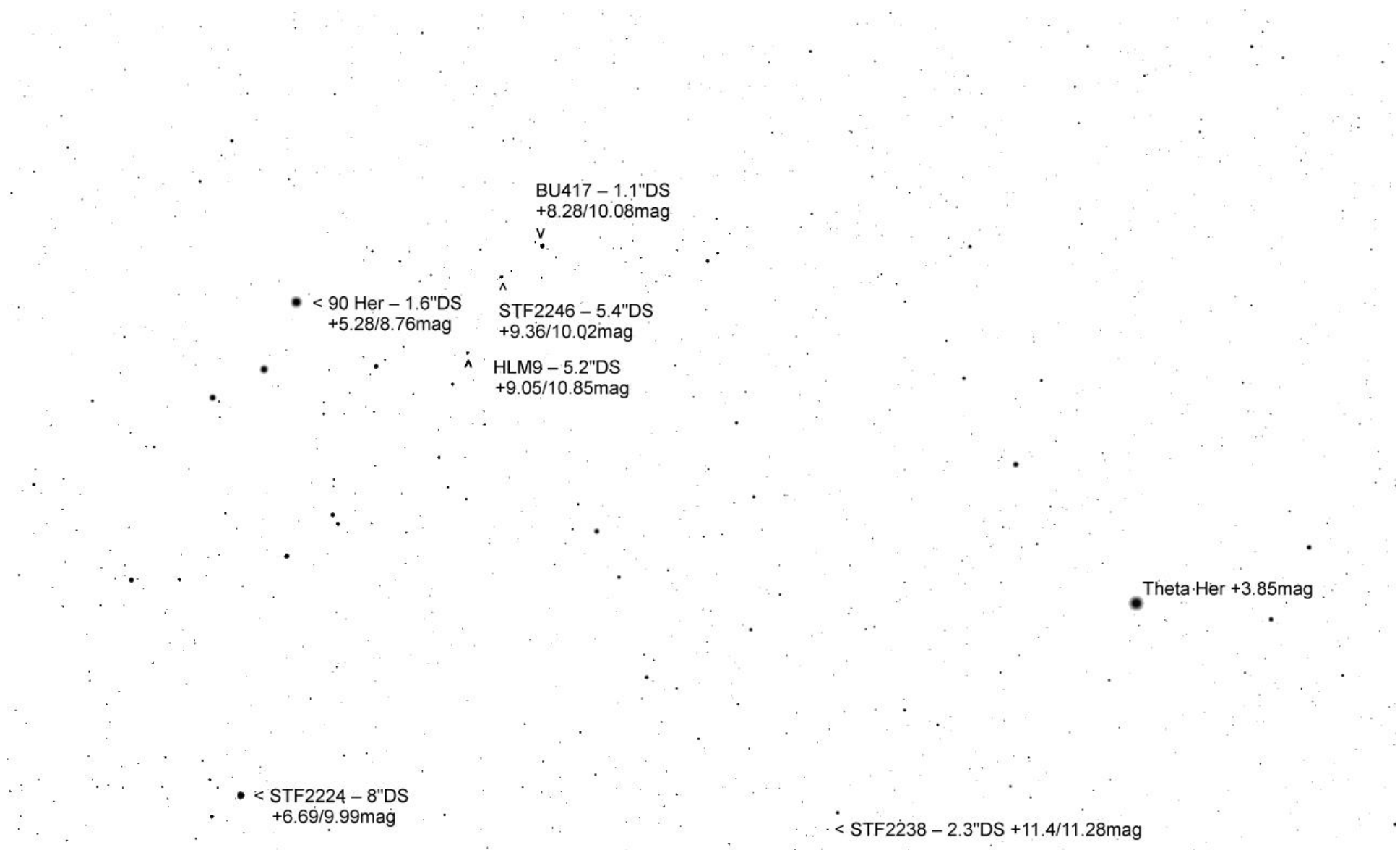
STF2236 – 3.4"DS  
+8.32/10.14mag

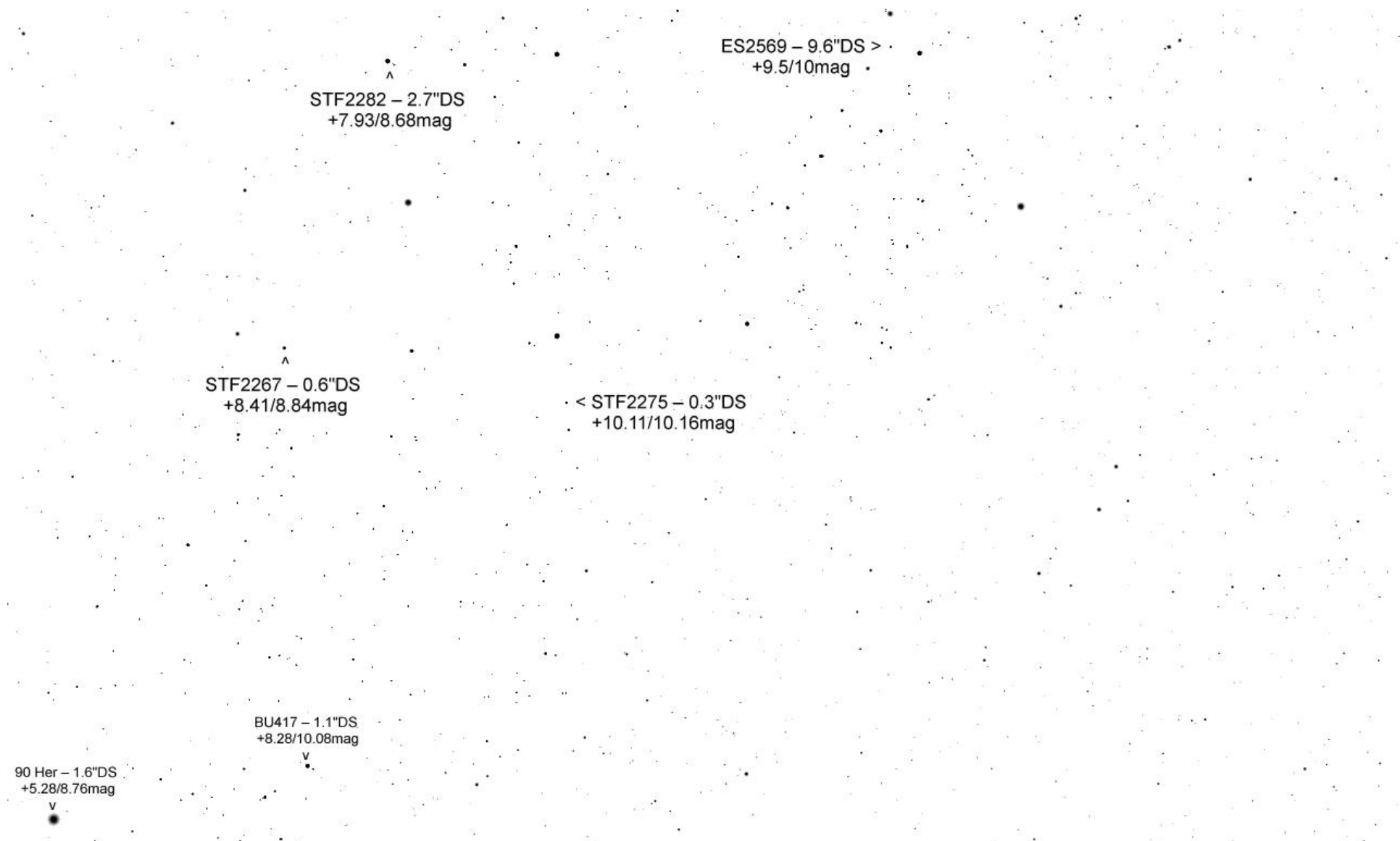
STF2226 – 12.6"DS  
+9.21/12.2mag

< AG214 – 4.4"DS  
+8.99/9.89mag

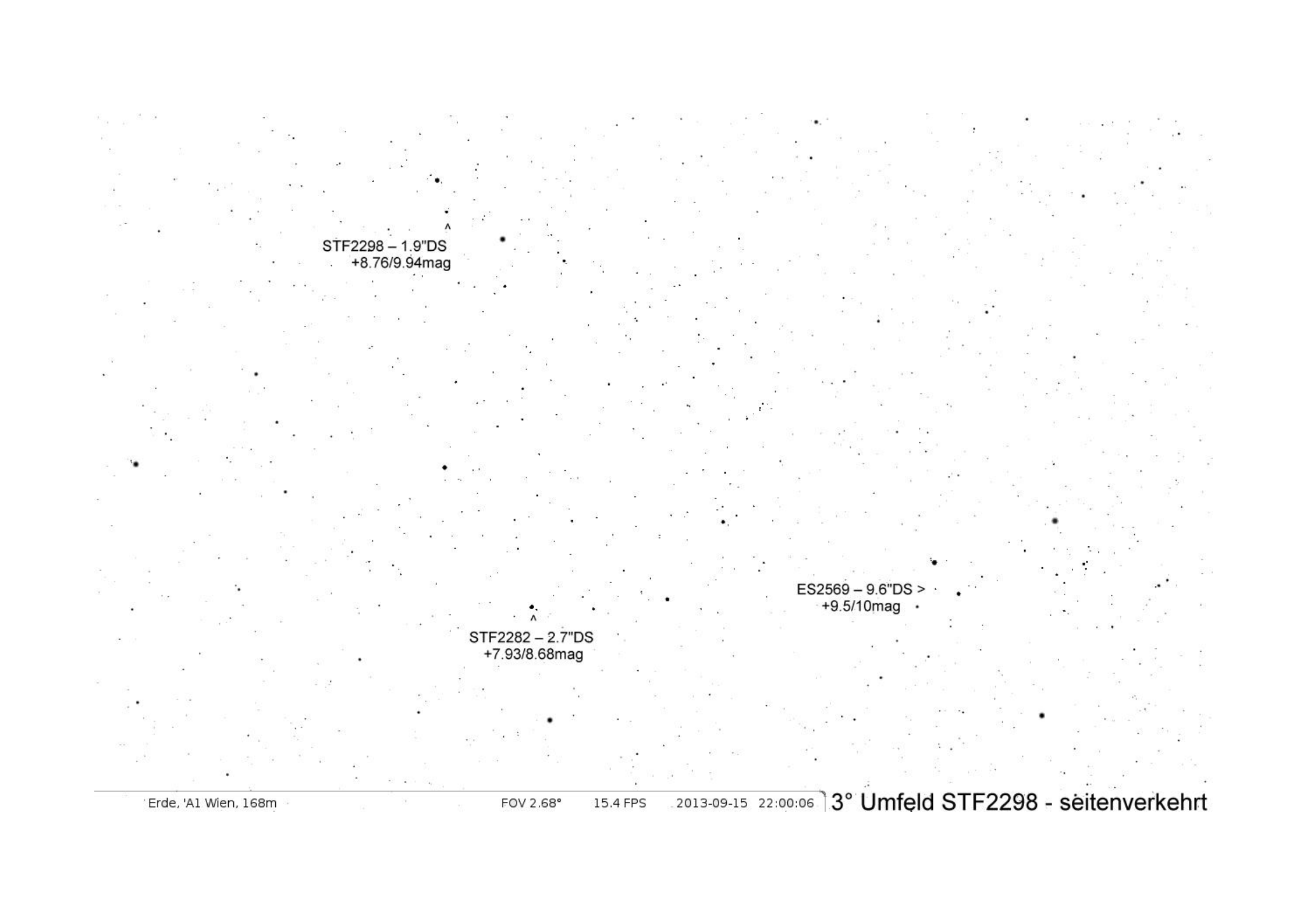
STT334 – 15.3"DS  
+7.92/9.94mag











STF2298 – 1.9"DS  
+8.76/9.94mag

STF2282 – 2.7"DS  
+7.93/8.68mag

ES2569 – 9.6"DS >  
+9.5/10mag