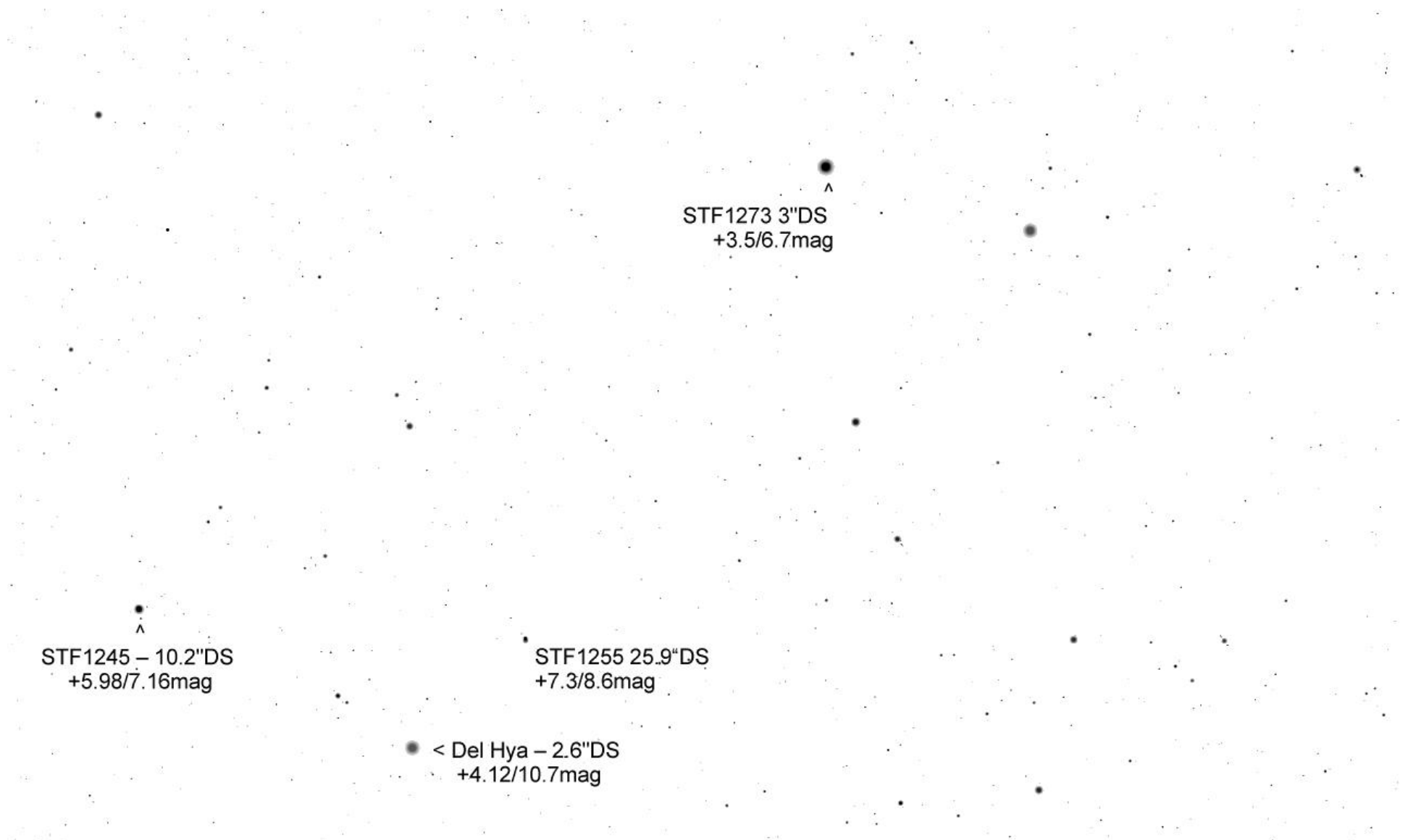


Delta Hya +4.1mag

STF1273 3"DS +3.5/6.7mag

Rho Hya - 12.1"DS
+4.36/11.9mag

Zeta Hya +3.1mag =>

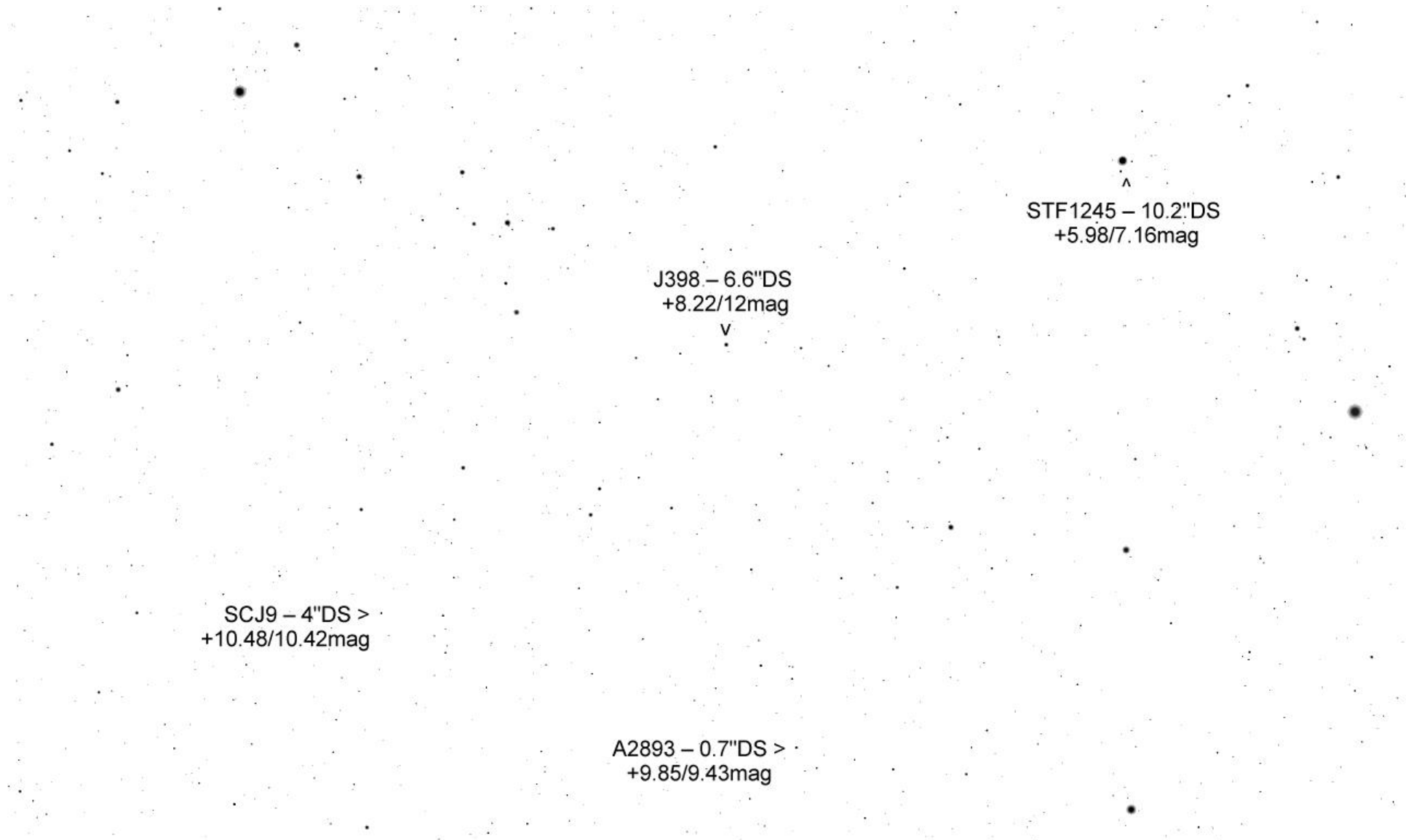


STF1245 – 10.2"DS
+5.98/7.16mag

STF1255 25.9"DS
+7.3/8.6mag

● < Del Hya – 2.6"DS
+4.12/10.7mag

STF1273 3"DS
+3.5/6.7mag

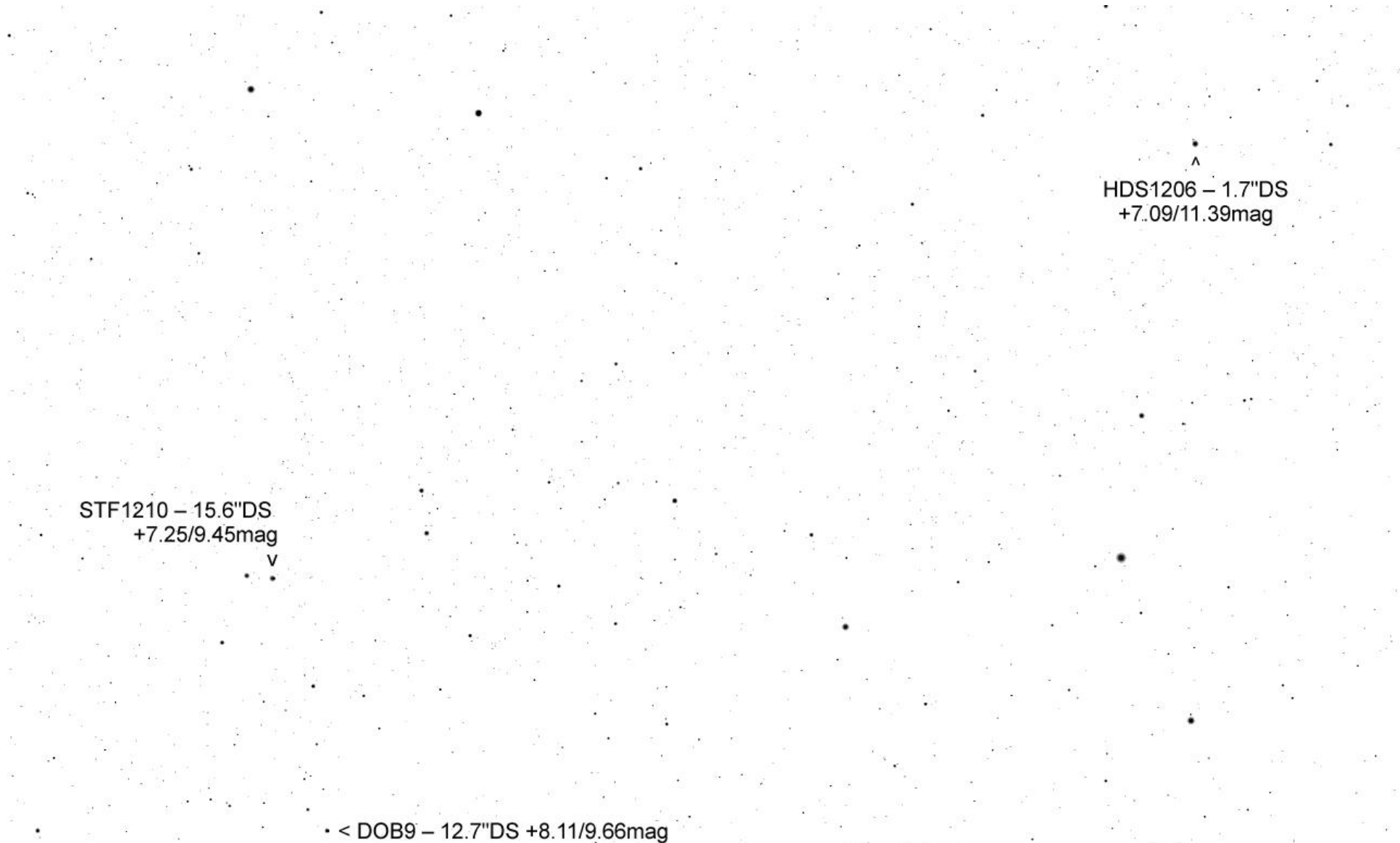


A2893 – 0.7"DS >
+9.85/9.43mag

^
STF1226 – 2.7"DS
+8.46/10.52mag

^
BAL2815 – 10.4"DS
+8.22/10.9mag

^
HDS1206 – 1.7"DS
+7.09/11.39mag



STF1210 – 15.6"DS
+7.25/9.45mag
v

HDS1206 – 1.7"DS
+7.09/11.39mag
^

• < DOB9 – 12.7"DS +8.11/9.66mag

HDS1206 – 1.7"DS
+7.09/11.39mag

STF1226 – 2.7"DS
+8.46/10.52mag

BAL2815 – 3.7"DS
+9.3/10.6mag

STF1243 – 1.7"DS
+7.85/9.39mag