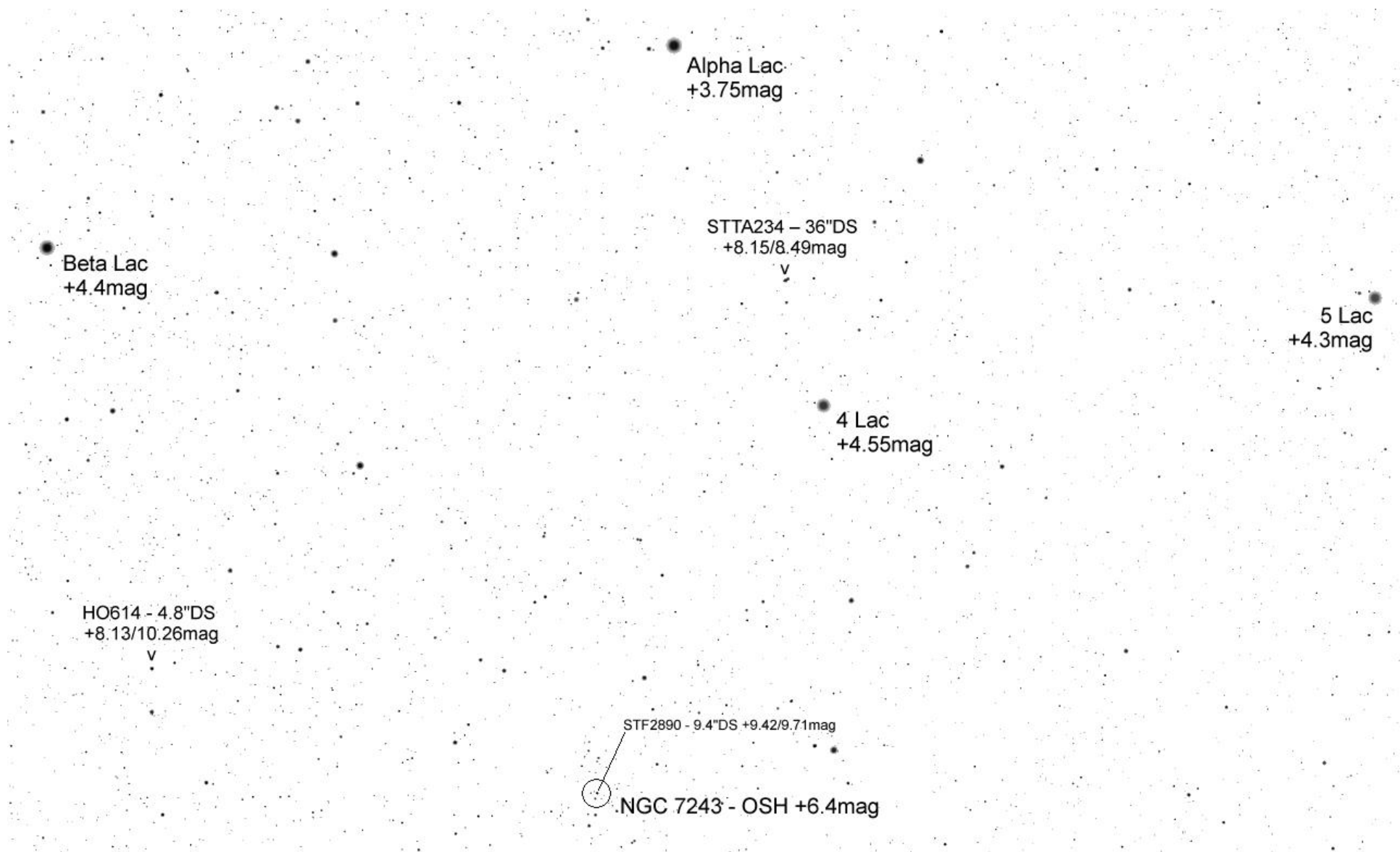
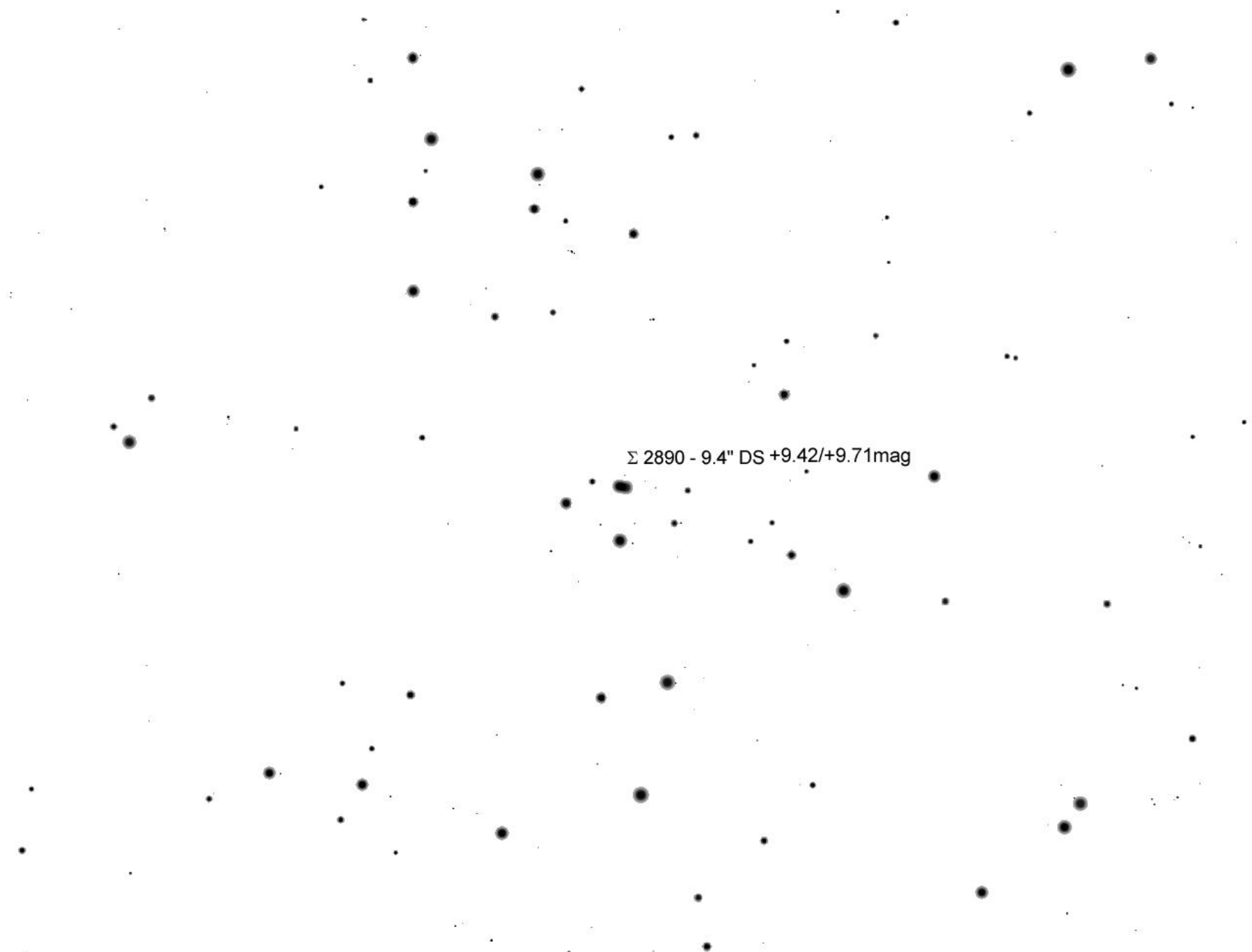
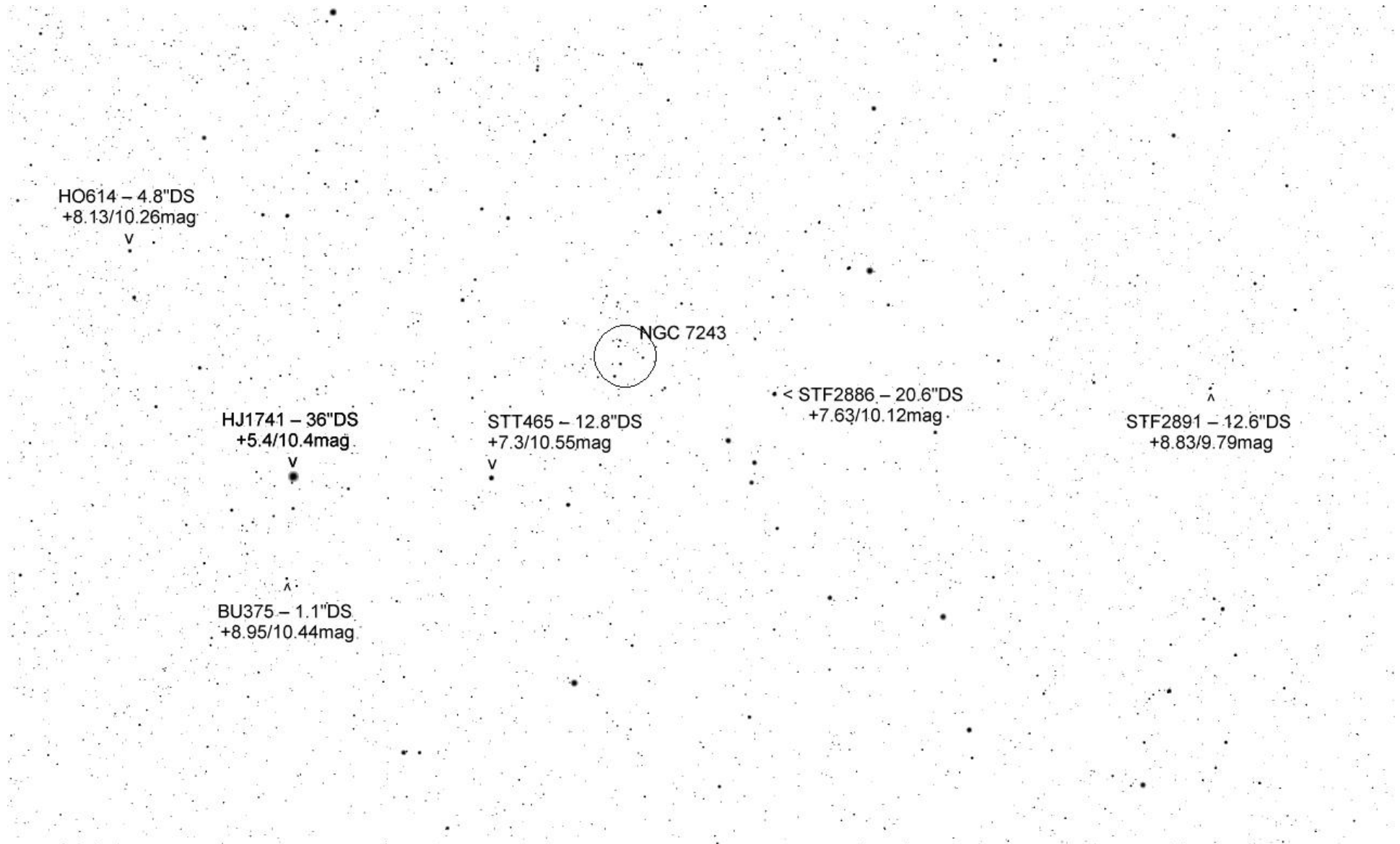


Lokalisierung Eidechse





Σ 2890 - 9.4" DS +9.42/+9.71mag



HO614 – 4.8"DS
+8.13/10.26mag

v

HJ1741 – 36"DS
+5.4/10.4mag

v

BU375 – 1.1"DS
+8.95/10.44mag

^

STT465 – 12.8"DS
+7.3/10.55mag

v

NGC 7243

• < STF2886 – 20.6"DS
+7.63/10.12mag

STF2891 – 12.6"DS
+8.83/9.79mag

^

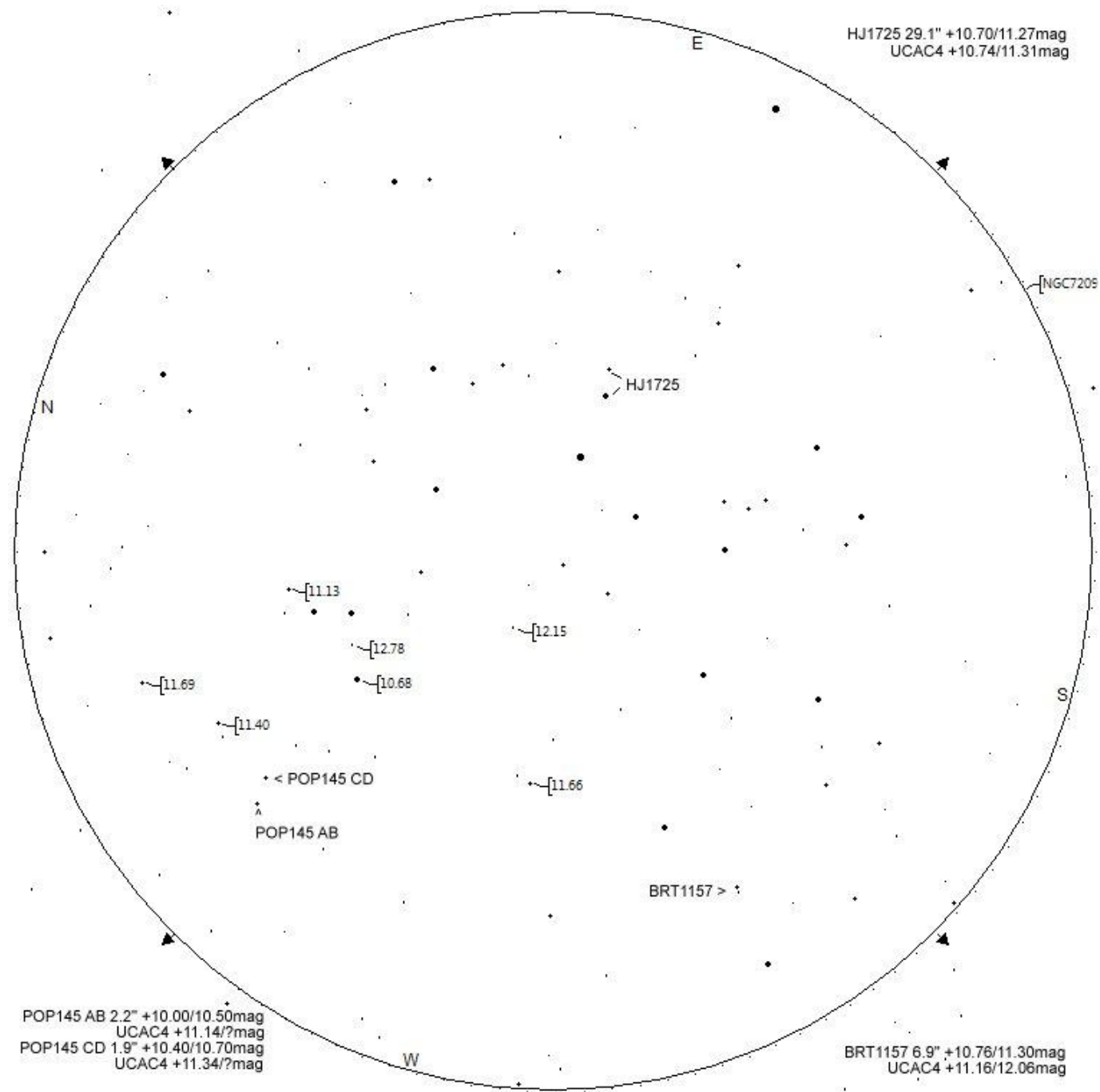
STF2891 – 12.6"DS
+8.83/9.79mag

ES2715 – 36.5"DS
+8.66/9.15mag

NGC 7209 - OSH
+6.7mag

HJ1735 – 27.3"DS
+6.73/9.69mag





• < HJ1735 – 27.3"DS +6.73/9.69mag

HO175 – 0.9"
+7.86/9.55mag
v

HO175 – 0.9"
+7.86/9.55mag
v

DOO90 – 4.3"
+9.5/9.7mag
v

GLP20 – 30.8"DS
+8.6/10.5mag
v

A406 – 34"
+7.4/10.4mag
v

^
GLP20 – 30.8"DS
+8.6/10.5mag

^
STF2882 – 3.4"DS
+9.6/9.72mag

^
STF2876 – 11.9"DS
+8.06/9.81mag

STT462 – 1.1"DS
+8.05/9.53mag
v