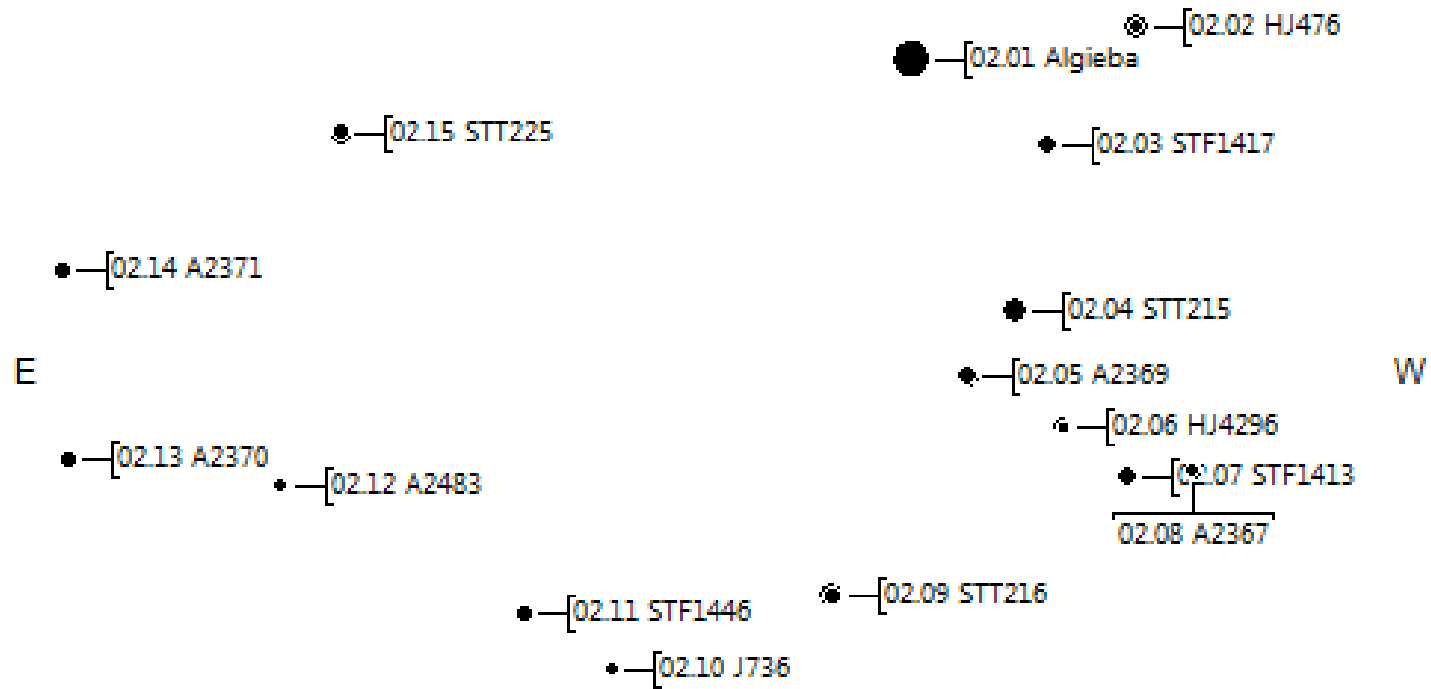
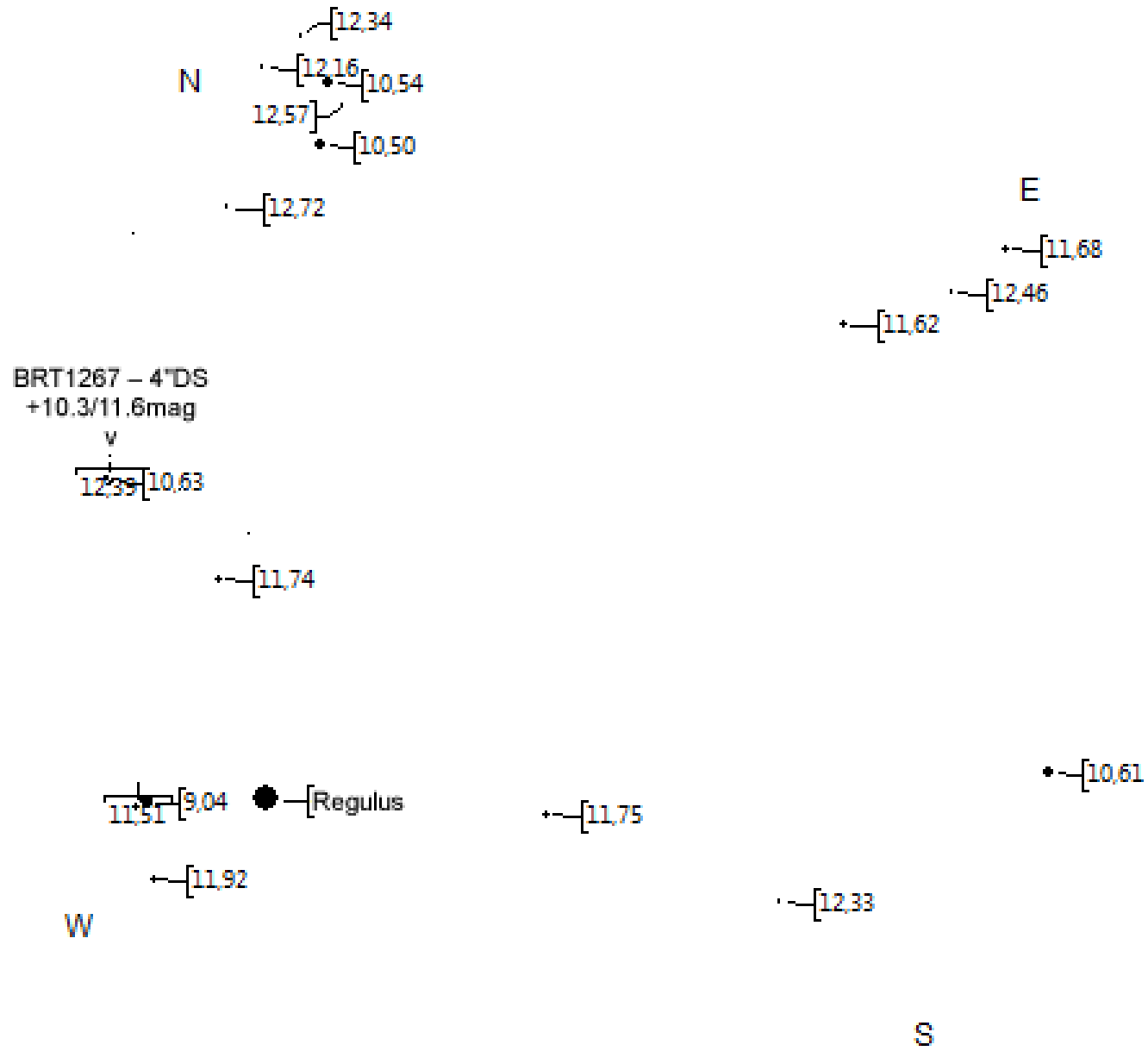


Löwe

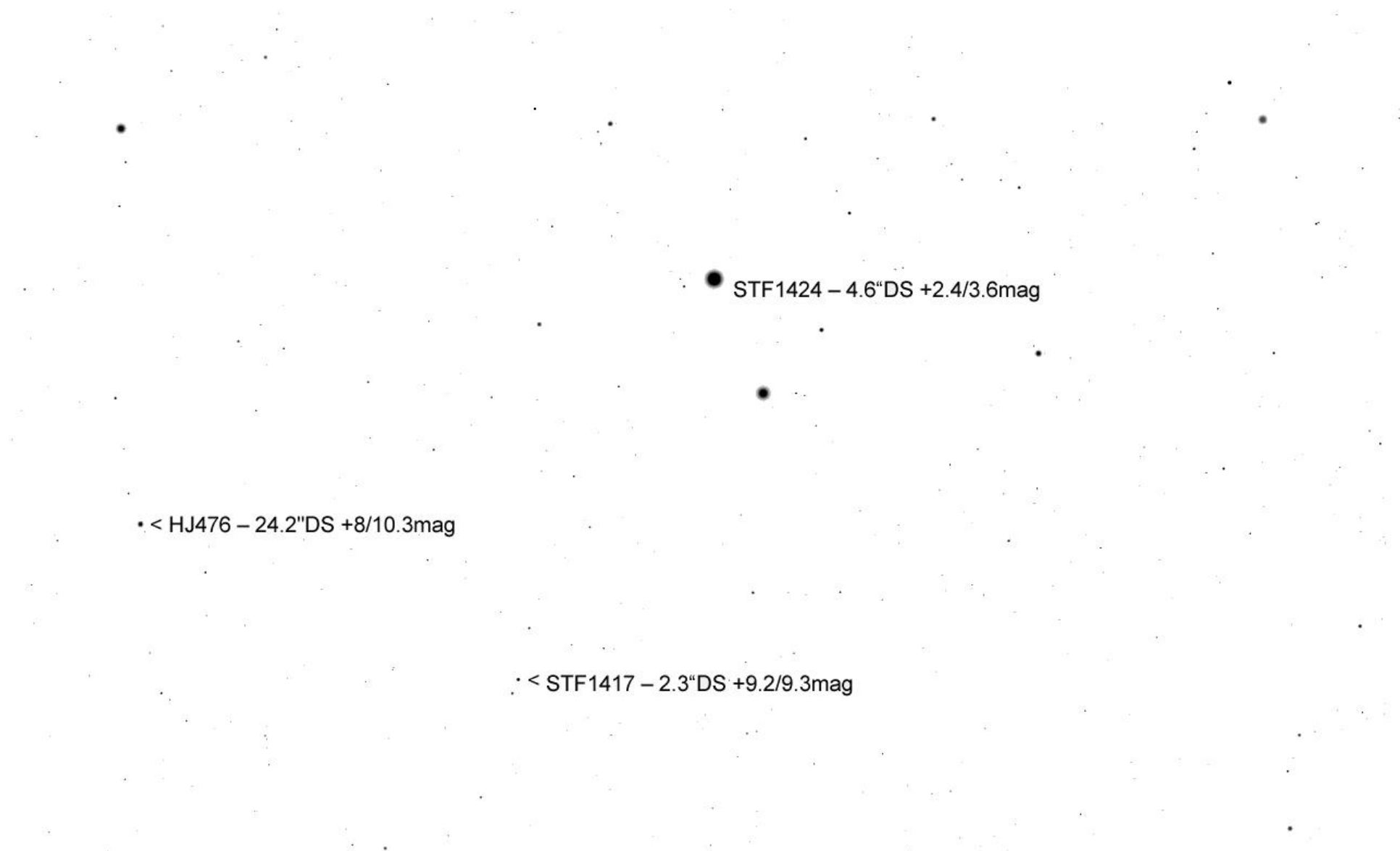
N



S



TML Regulus 30' per Ende April



● STF1424 – 4.6"DS +2.4/3.6mag

• < HJ476 – 24.2"DS +8/10.3mag

⋮ < STF1417 – 2.3"DS +9.2/9.3mag

STF1417 – 2.3"DS +9.2/9.3mag

STT215 – 1.5"DS  
+7.3/7.5mag

A2369 1"DS  
+8.5/9.7mag

^  
A2369 – 1"DS  
+8.5/9.7mag

< HJ4296 – 15.6"DS +9.38/11.4mag  
+12.2mag

STT216 – 2.2"DS  
+7.4/10.3mag  
v

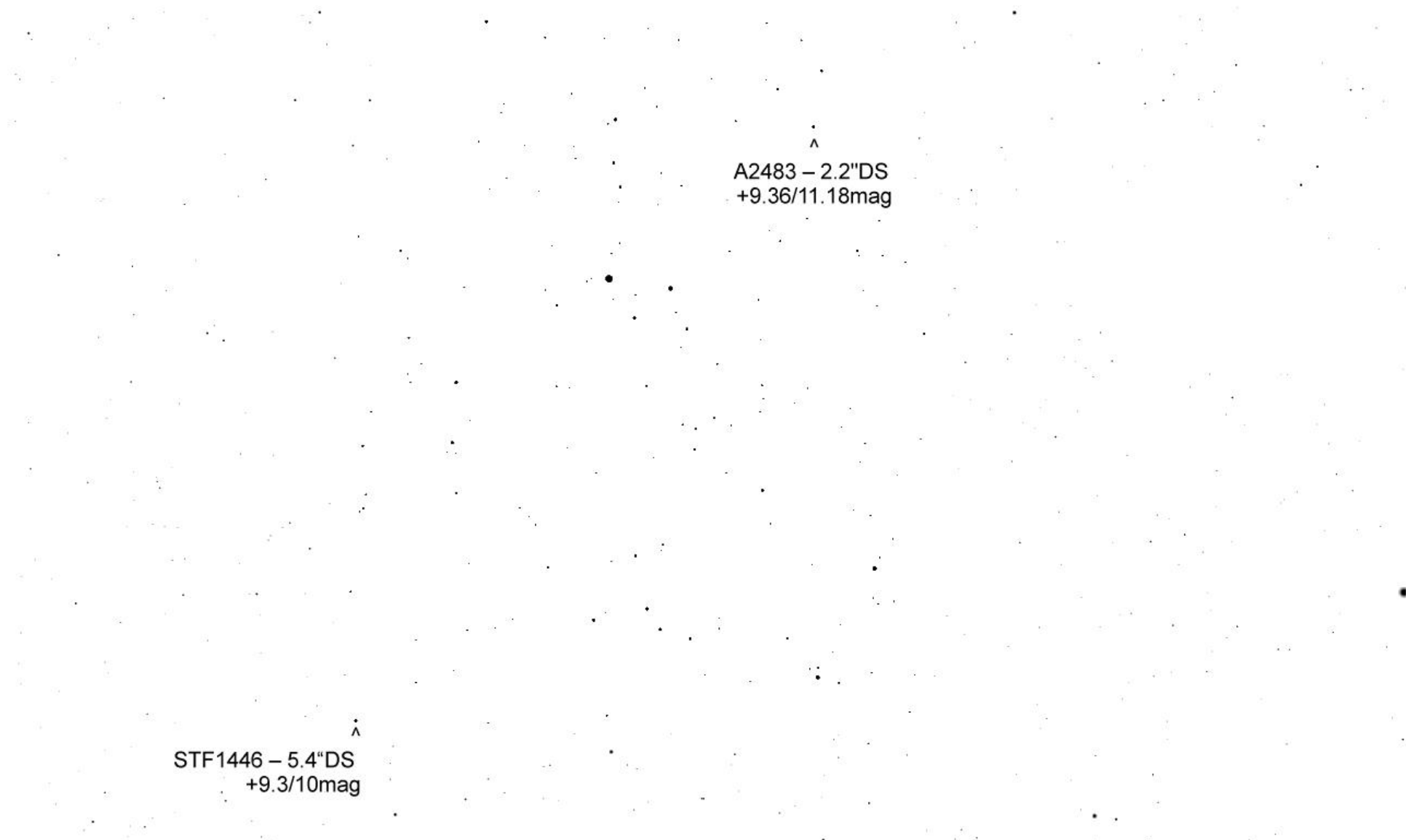
STF1413 – 1.6"DS  
+9.76/9.77mag >

< A2367 – 1.6"DS  
+10.76/11.49mag

STF1446 – 5.4"DS =>  
+9.3/10mag

J736 – 2.6"DS >  
+9.1/9.4mag  
+11.2/11.5mag

^  
STT216 – 2.2"DS +7.4/10.3mag



^  
A2483 - 2.2"DS  
+9.36/11.18mag

^  
STF1446 - 5.4"DS  
+9.3/10mag



• < STT225 – 6.5"DS  
+8.53/10.38mag

• < A2371 – 2.6"DS  
+9.85/10.96mag

^  
A2370 – 2.7"DS  
+9.95/10.87mag

^  
A2483 – 2.2"DS +9.36/11.18mag

Erde, 'A1 Wien, 168m

FOV 2.97°

50.5 FPS

2013-04-30 22:30:30

3° Umfeld A2370 - seitenverkehrt