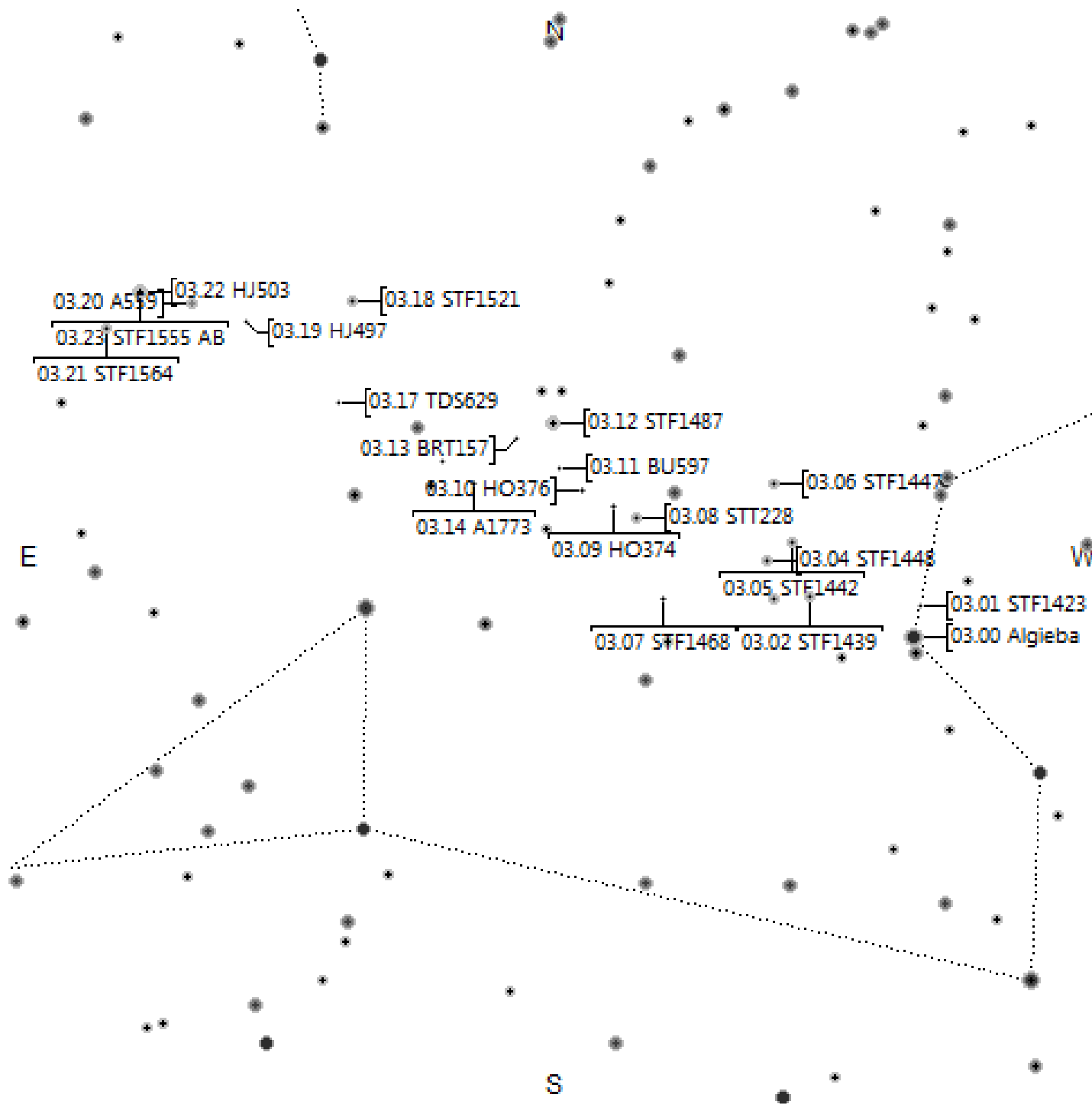
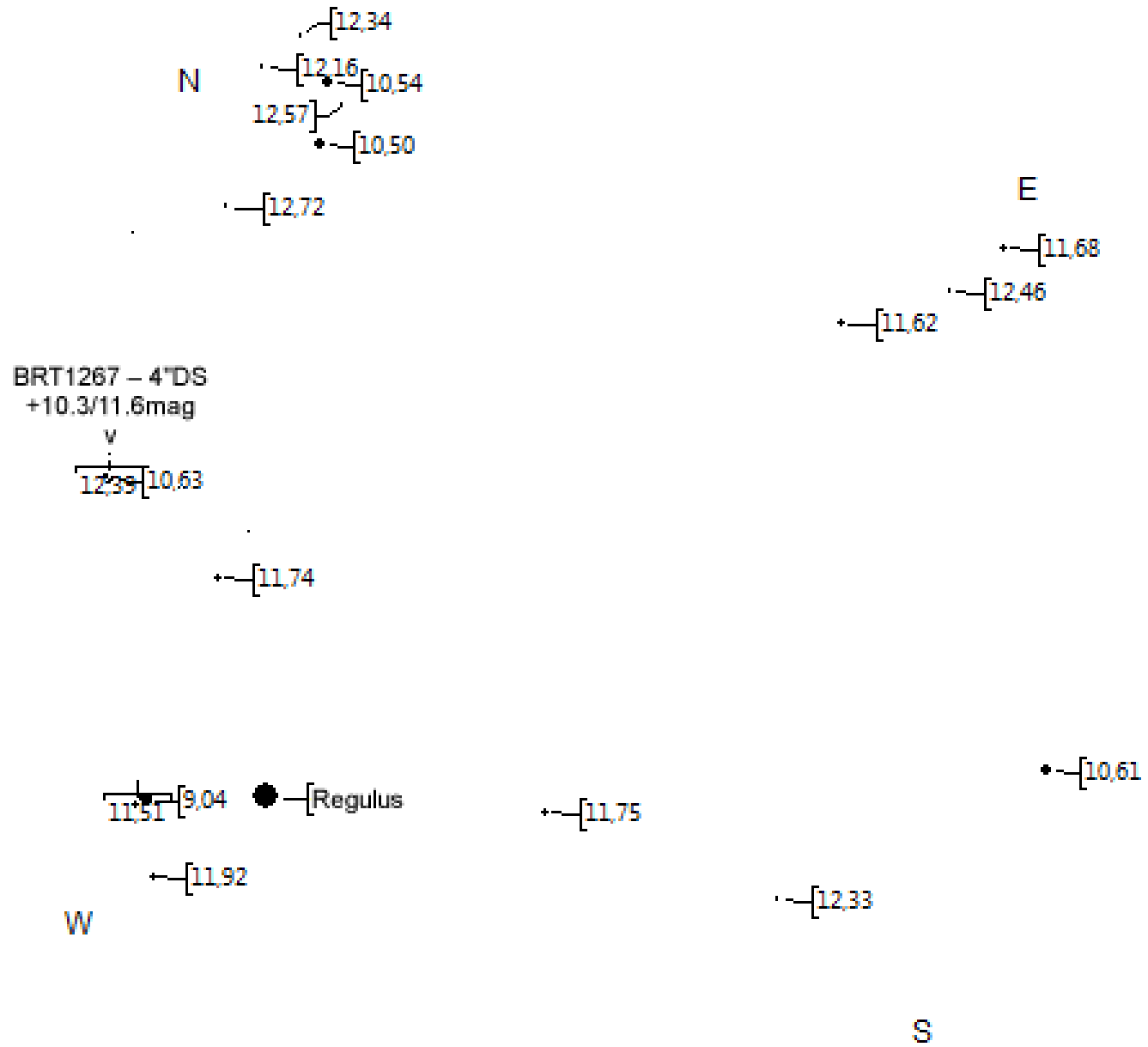


Löwe





TML Regulus 30' per Ende April

STF1439 – 1.2"DS +8.3/8.9mag => ·

STF1423 – 0.7"DS  
+9.4/10.08mag

v

Gamma Leo  
STF1424 – 4.6"DS  
+2.4/3.6mag

• <= STF1447 – 4.4"DS +7.5/8.9mag

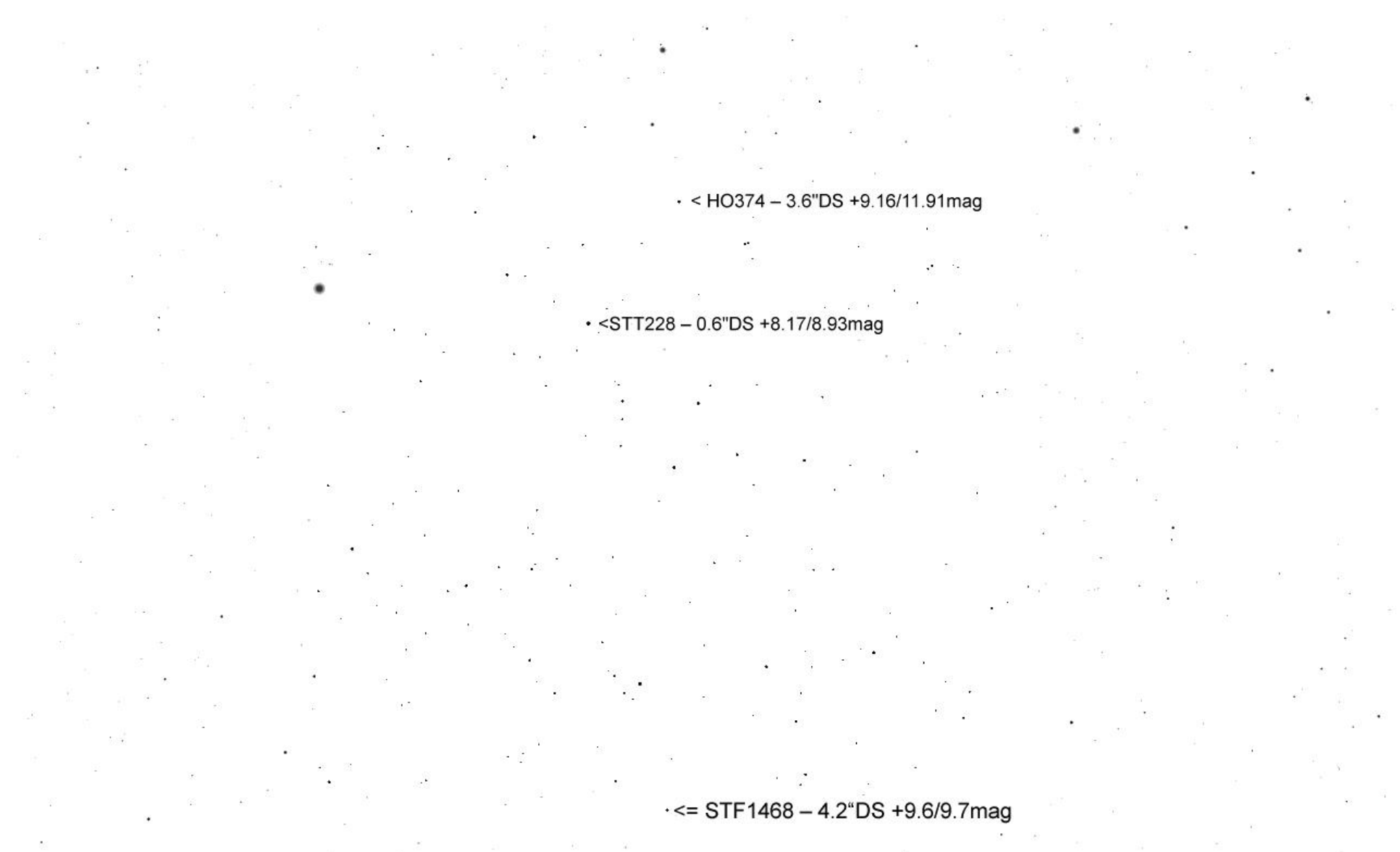
STF1442 => •  
13.2"DS  
+8.2/8.5mag

STF1448 => •  
10.9"DS  
+7.5/9.6mag

^  
STF1468 – 4.2"DS  
+9.6/9.7mag

• < COU173 – 0.6"DS +8.7/11.8mag

STF1439 – 1.2"DS  
+8.3/8.9mag => •



• < HO374 – 3.6"DS +9.16/11.91mag

• <STT228 – 0.6"DS +8.17/8.93mag

• <= STF1468 – 4.2"DS +9.6/9.7mag

STF1487 => ●  
(54 Leo)  
6"DS  
+4.5/6.3mag

· < BRT157 – 3.4"DS +10.7/12mag

^  
· COU293 – 2.1"DS +10.78/11.53mag

^  
· A1773 – 2.5"DS +9.31/11.5mag

· < BU597 – 1"DS +9.2/10.13mag

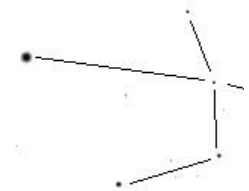
HO376 – 3"DS  
+9.9/11.1mag  
v

· < HO374 – 3.6"DS +9.16/11.91mag

TDS7670 – 2.3"DS  
+11.42/11.55mag  
v

^  
COU293 – 2.1"DS  
+10.78/11.53mag

● <= STF1487 – 6"DS +4.5/6.3mag





STF1521 – 3.7"DS  
+7.7/8.1mag

TDS629 – 1.3"DS >  
+10.77/11.57mag

TDS7670 – 2.3"DS +11.42/11.55mag

STF1521 – 3.7"DS  
+7.7/8.1mag

v

< HJ497 – 34.9"DS  
+10/11mag

