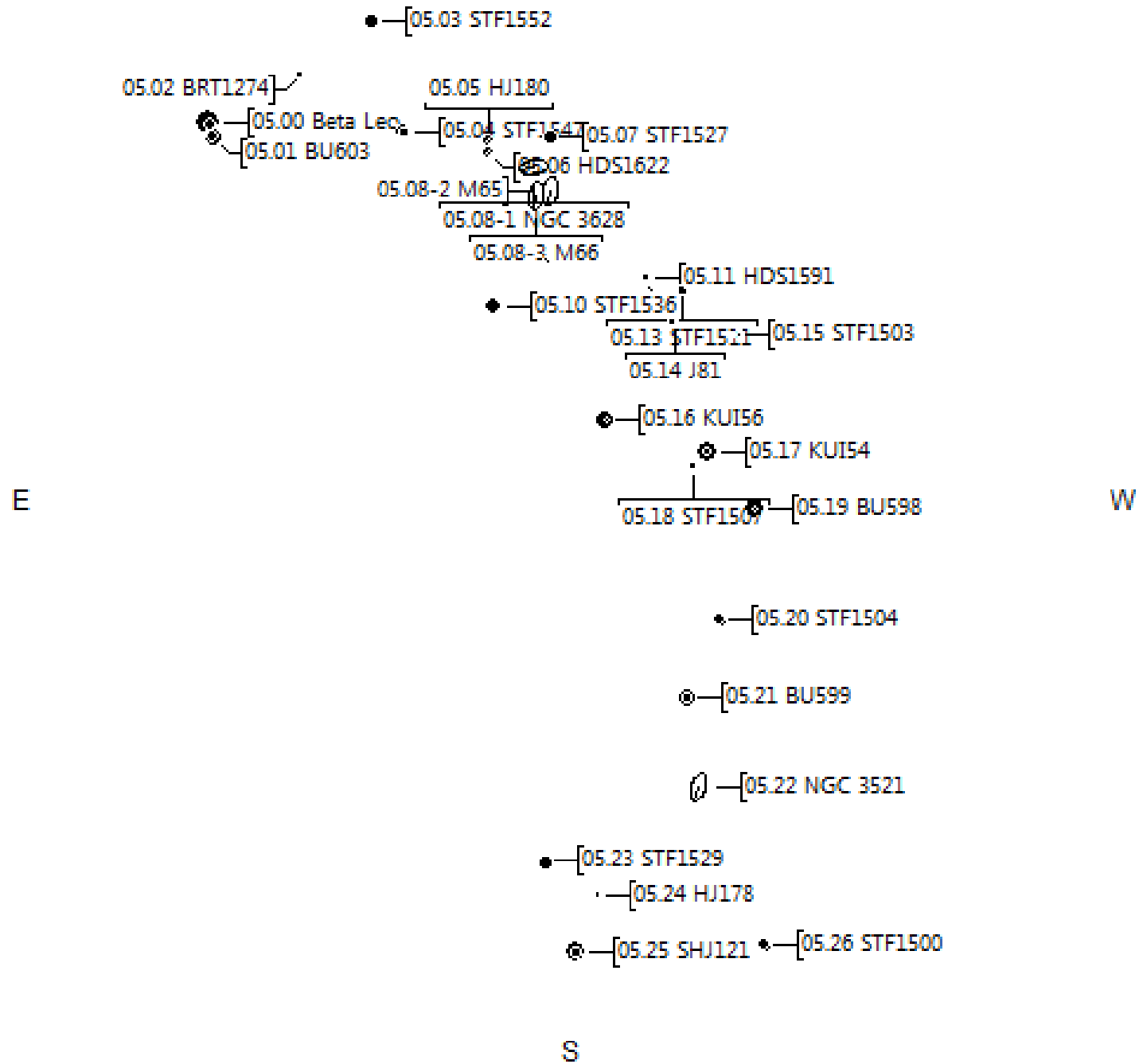
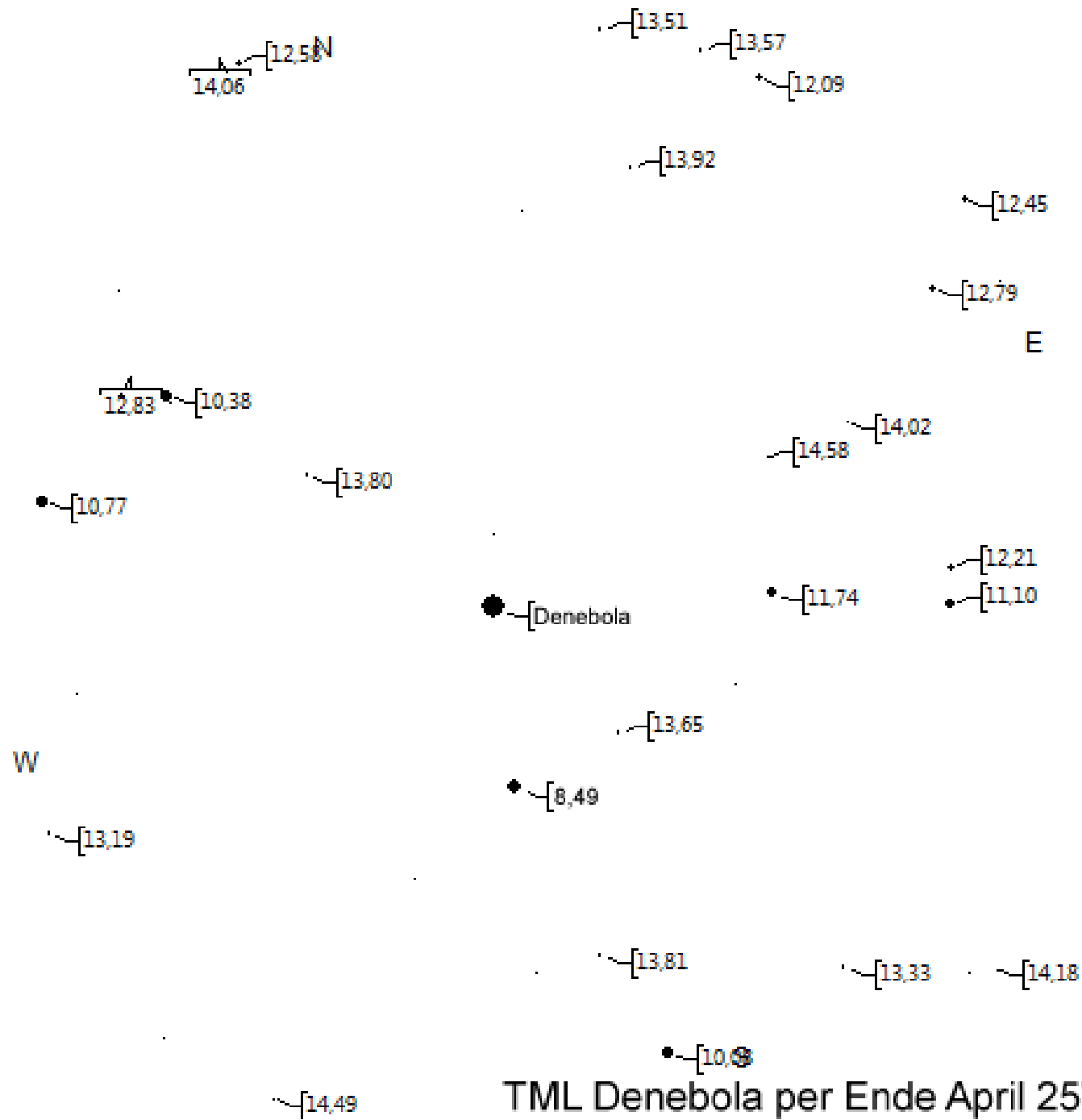


Löwe

N





STF1552 – 3.5"DS +6.3/7.3mag

^  
BRT1274 – 2.9"DS  
+9.9/10.3mag

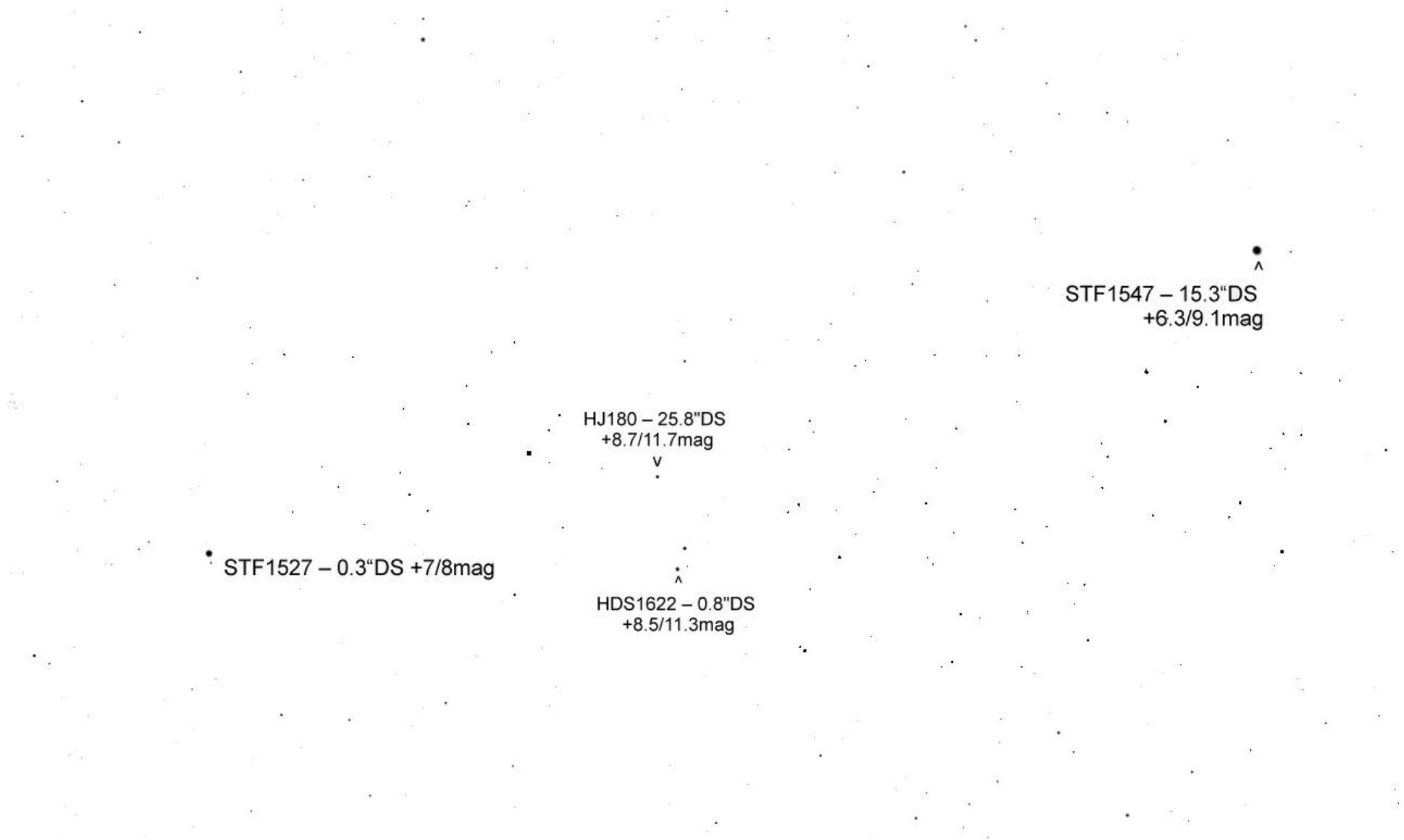
Beta Leo – 238.4"DS  
+2.1/8.5mag

v

BU603 – 1"DS +6/8.5mag => •

STF1552 – 3.5"DS +6.3/7.3mag

STF1547 – 15.3"DS => •  
+6.3/9.1mag



STF1527 – 0.3"DS +7/8mag

HJ180 – 25.8"DS  
+8.7/11.7mag

HDS1622 – 0.8"DS  
+8.5/11.3mag

STF1547 – 15.3"DS  
+6.3/9.1mag

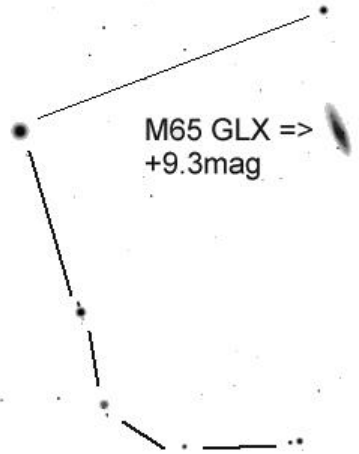
Theta Leo +3.3mag

HJ180 – 25.8"DS  
+8.7/11.7mag  
v

STF1527 – 0.3"DS +7/8mag

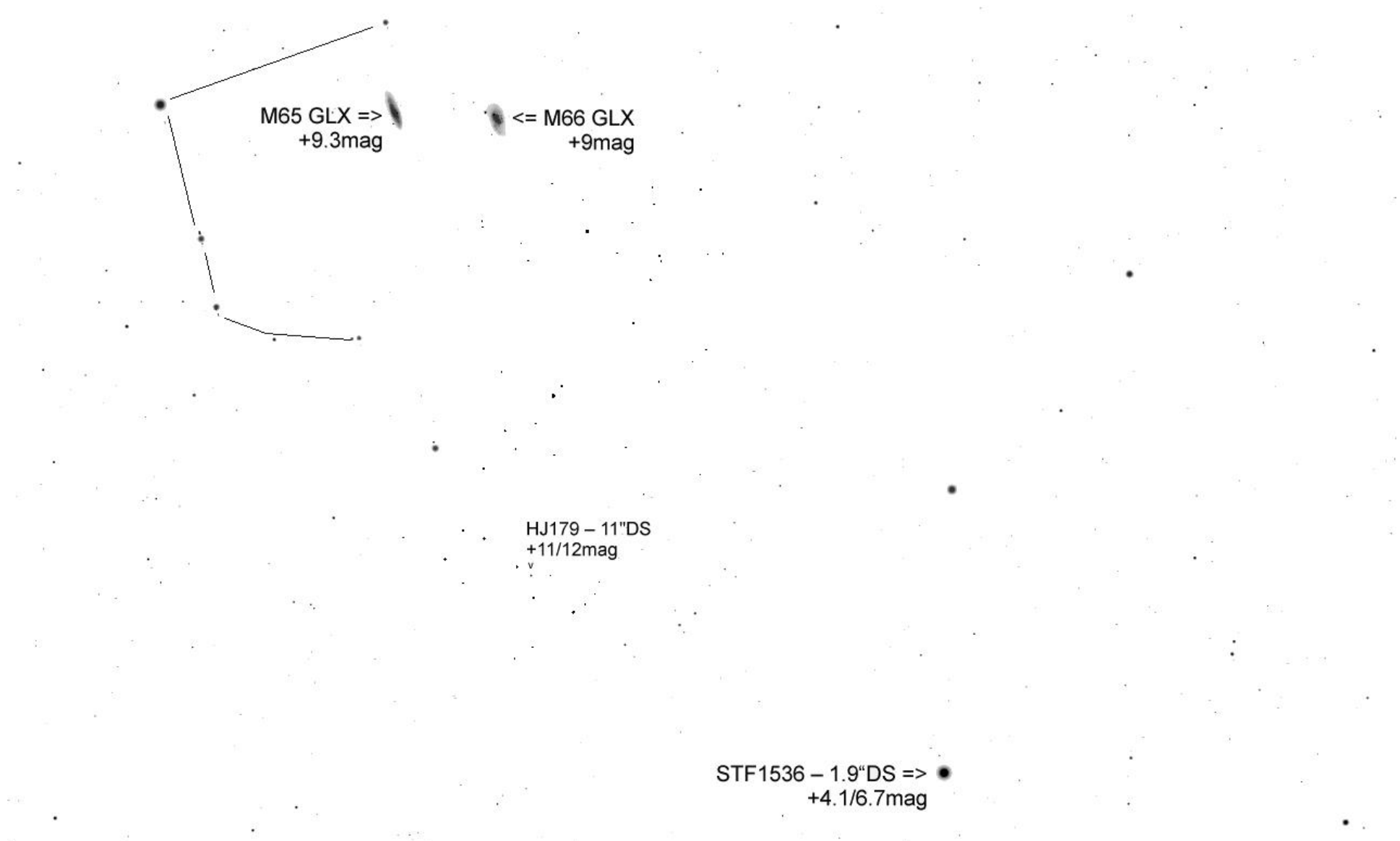
HDS1622 – 0.8"DS  
+8.5/11.3mag

◊ <= NGC 3628 GLX  
+9.5mag



M65 GLX =>  
+9.3mag

<= M66 GLX  
+9mag



M65 GLX =>  
+9.3mag

<= M66 GLX  
+9mag

HJ179 – 11"DS  
+11/12mag

STF1536 – 1.9"DS =>  
+4.1/6.7mag



HDS1591 – 0.6"DS >  
+8.14/10.9mag

J82 – 2.3"DS +10.81/11.86mag  
V

STF1511 – 7.7"DS +9.3/9.5mag

< J81 – 1.9"DS  
+10.22/10.63mag

STF1536 – 1.9"DS => ●  
+4.1/6.7mag

^  
STF1511 – 7.7"DS  
+9.3/9.5mag

< J81 – 1.9"DS  
+10.22/10.63mag

< STF1503 – 11.6"DS +9.39/11.07mag

• < KUI56 – 22.9"DS  
+5.79/11.83mag

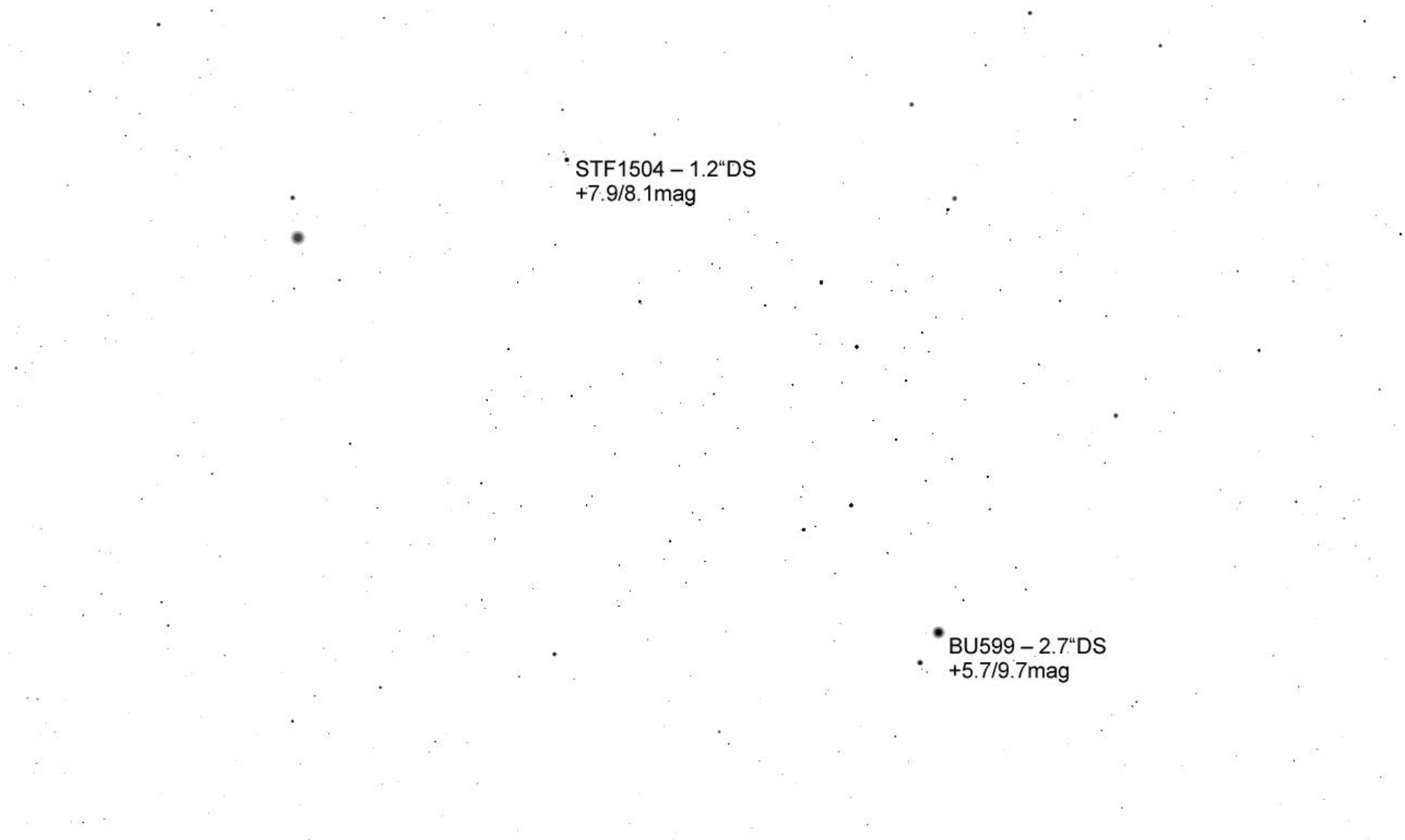
● < KUI54 – 4.1"DS  
+4.66/11mag

KUI54 – 4.1"DS  
+4.66/11mag

• < STF1507 – 8.4"DS +8.8/10.23mag

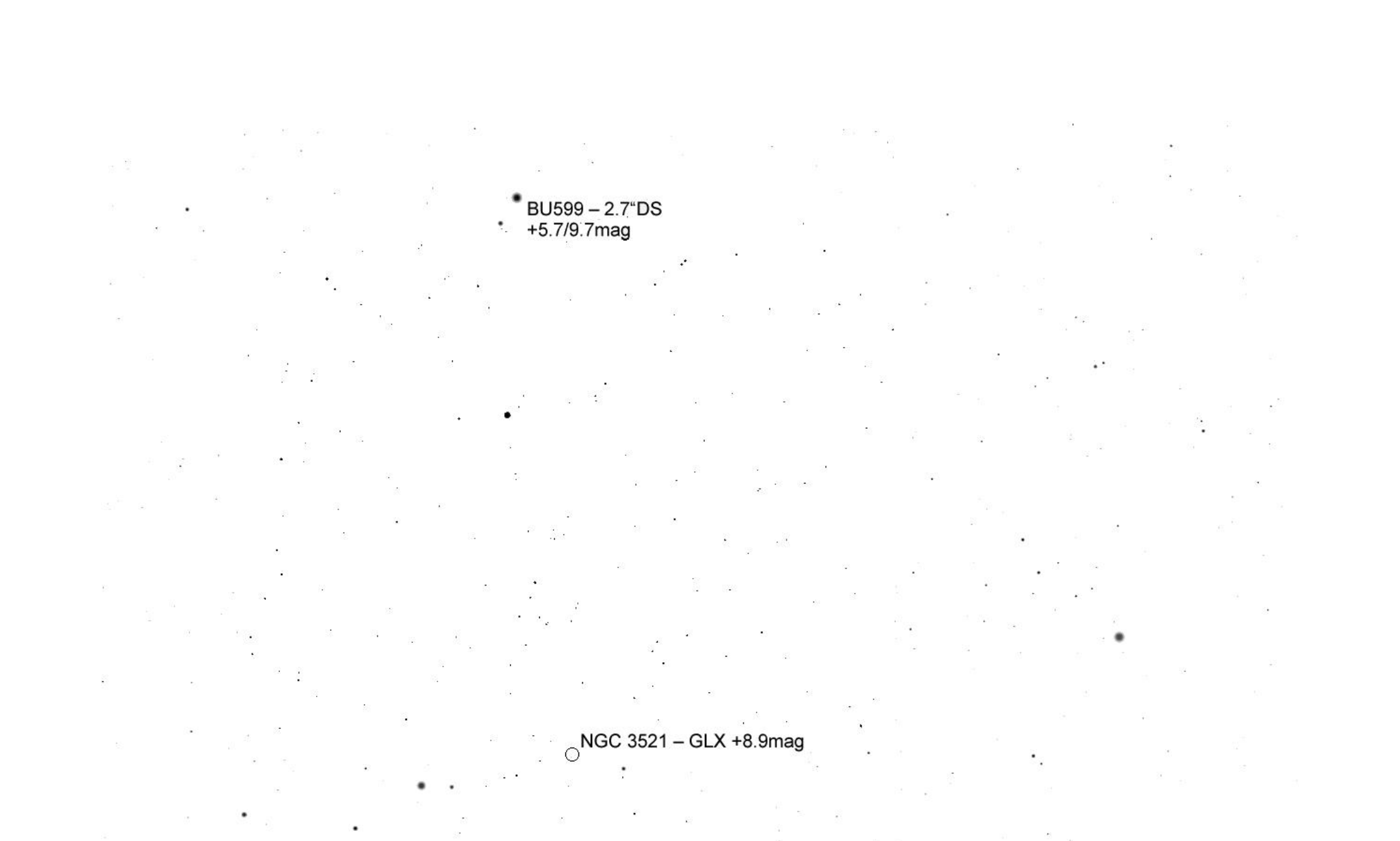
• < BU598 – 41.1"DS  
+4.99/12.6mag

STF1504 – 1.2"DS  
+7.9/8.1mag



STF1504 – 1.2"DS  
+7.9/8.1mag

BU599 – 2.7"DS  
+5.7/9.7mag



BU599 – 2.7"DS  
+5.7/9.7mag

NGC 3521 – GLX +8.9mag

○ NGC 3521 – GLX +8.9mag

STF1529 – 9.5"DS > •  
+7.1/7.9mag

HJ178 – 18.8"DS  
+10.5/11mag > .

HJ178 – 18.8"DS  
+10.5/11mag >

SHJ121 – 88.9"DS > ●  
+4.48/9.75mag

● < STF1500 – 1.4"DS  
+7.9/8.3mag