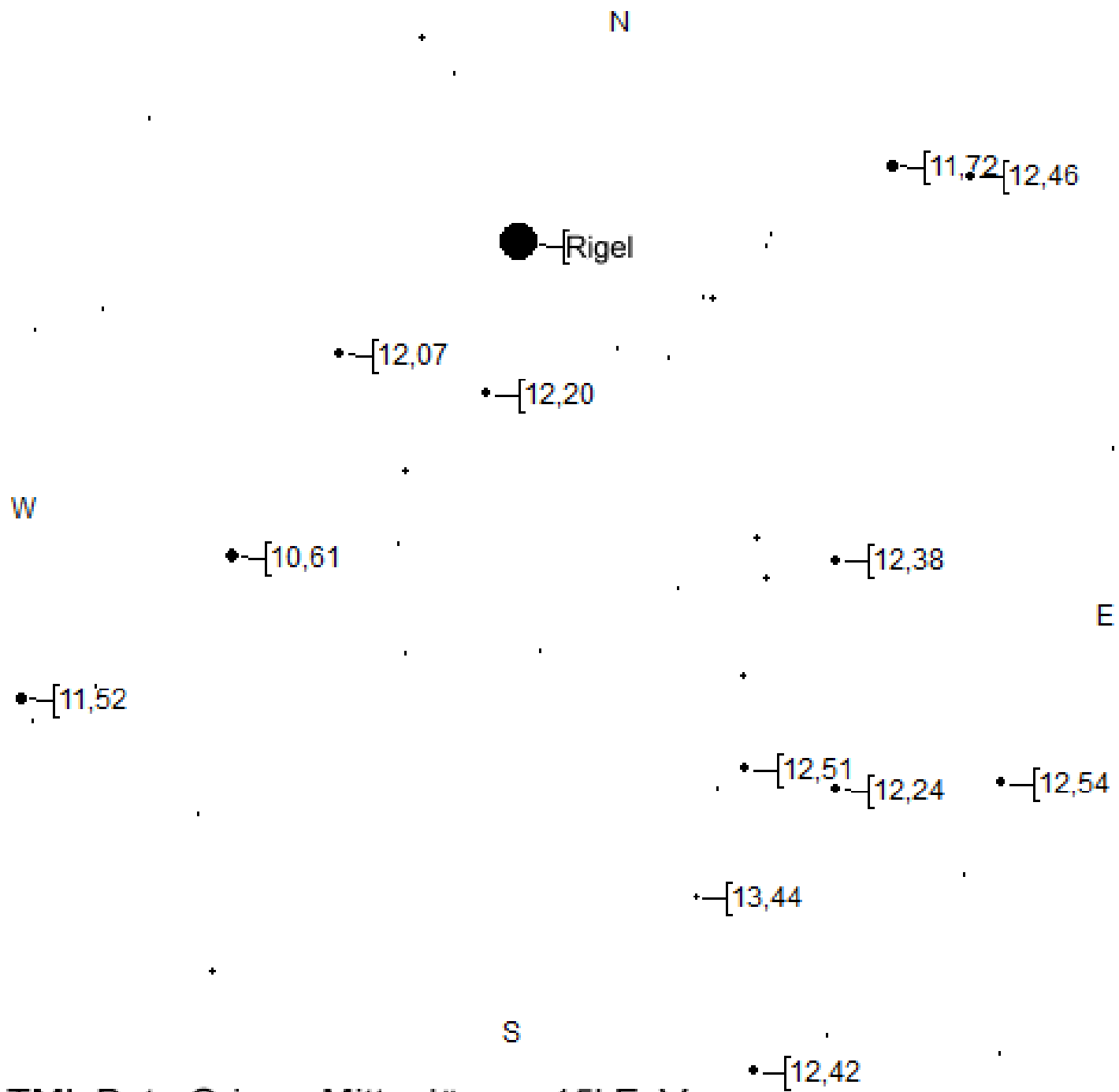


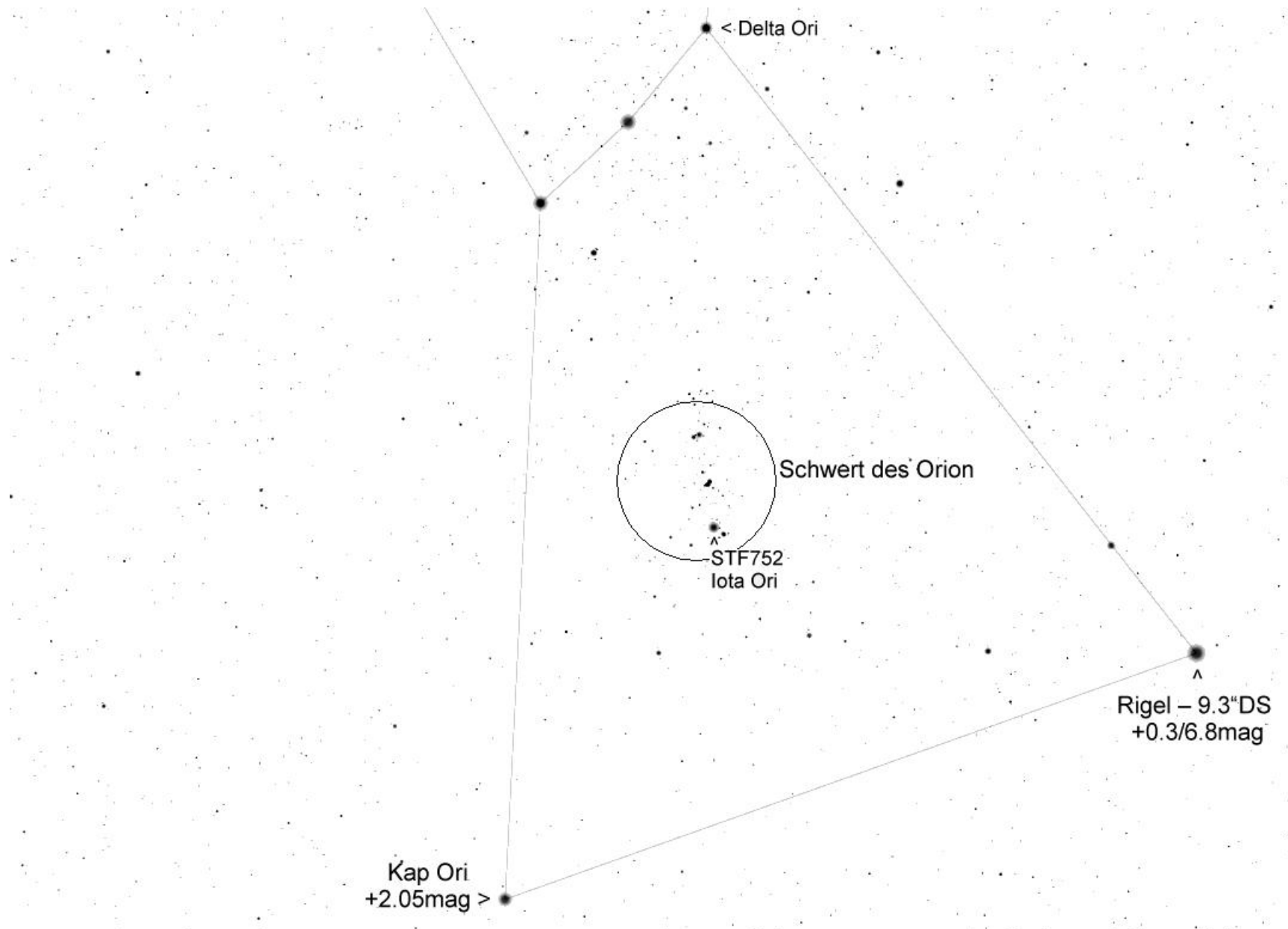
Stier
Aldebaran

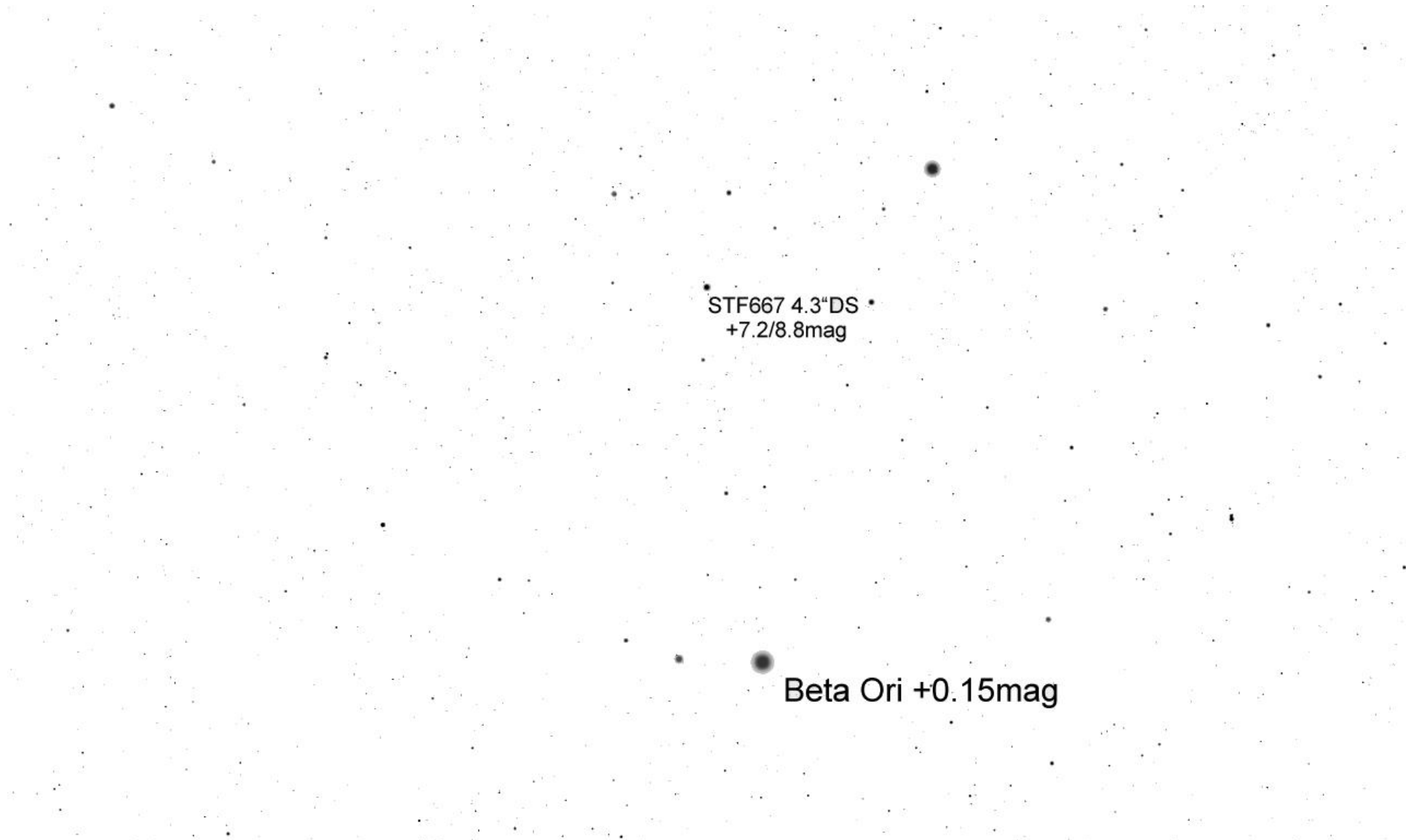
Orion

Orion



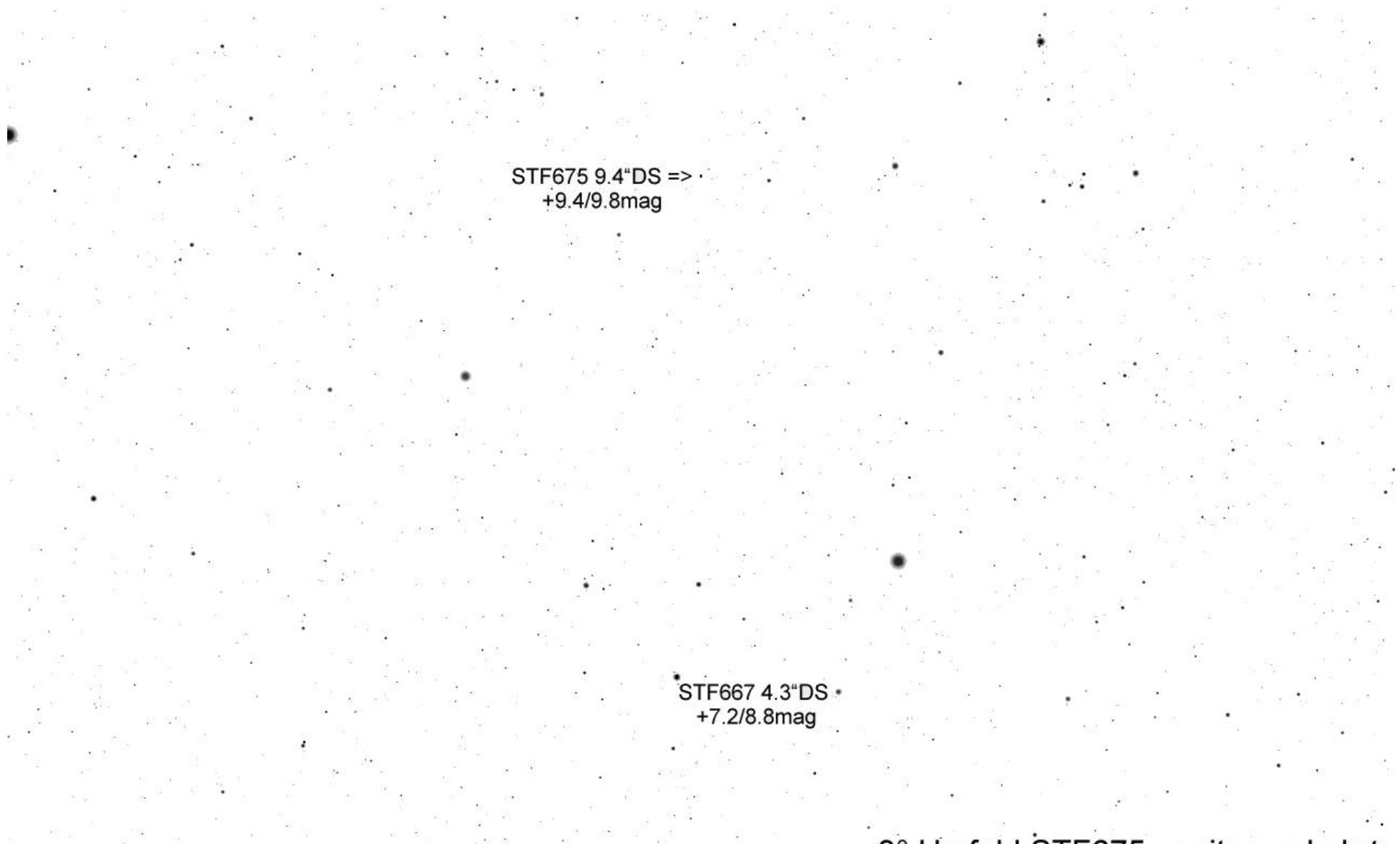
TML Beta Ori per Mitte Jänner 15' FoV





STF667 4.3"DS
+7.2/8.8mag

Beta Ori +0.15mag



STF675 9.4"DS =>
+9.4/9.8mag

STF667 4.3"DS
+7.2/8.8mag

STF709 - 12.3"DS +9.9/10.3mag

e Ori +4.1mag

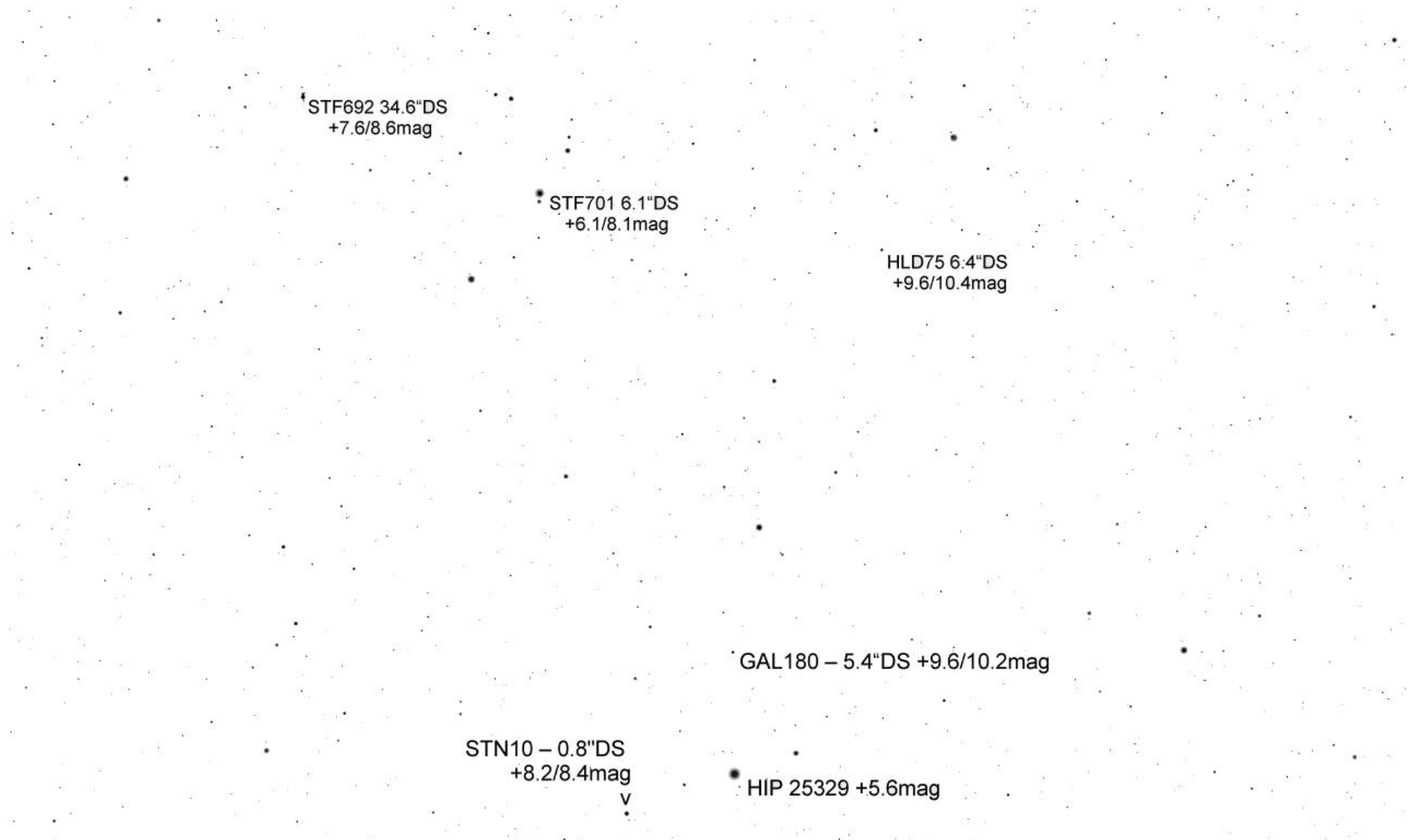
OL137 1.6"DS +9.8/10.1mag

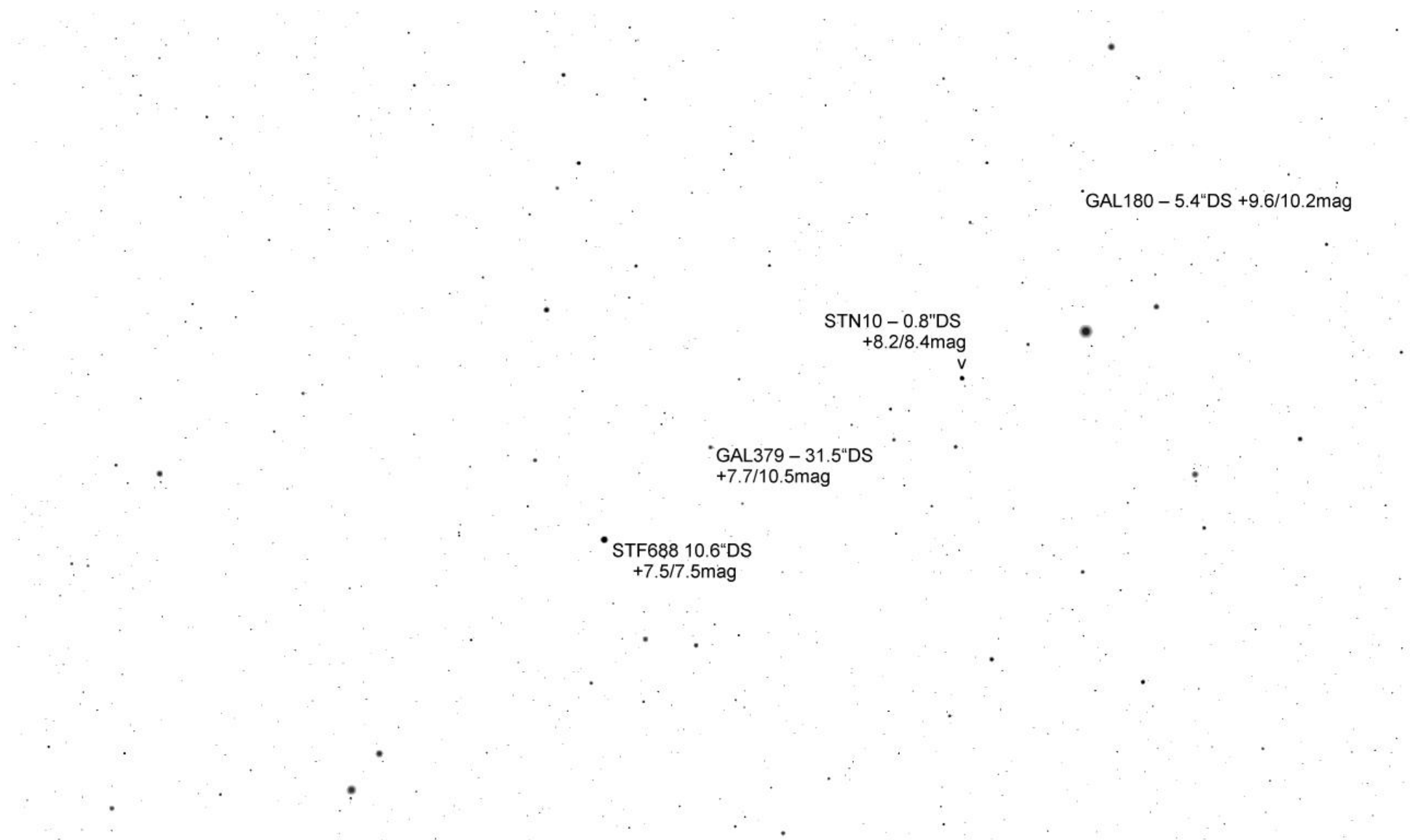
STF692 34.6"DS
+7.6/8.6mag

STF701 6.1"DS
+6.1/8.1mag

HLD75 6.4"DS
+9.6/10.4mag

Beta Ori +0.15mag





GAL180 – 5.4"DS +9.6/10.2mag

STN10 – 0.8"DS
+8.2/8.4mag

v

GAL379 – 31.5"DS
+7.7/10.5mag

STF688 10.6"DS
+7.5/7.5mag

