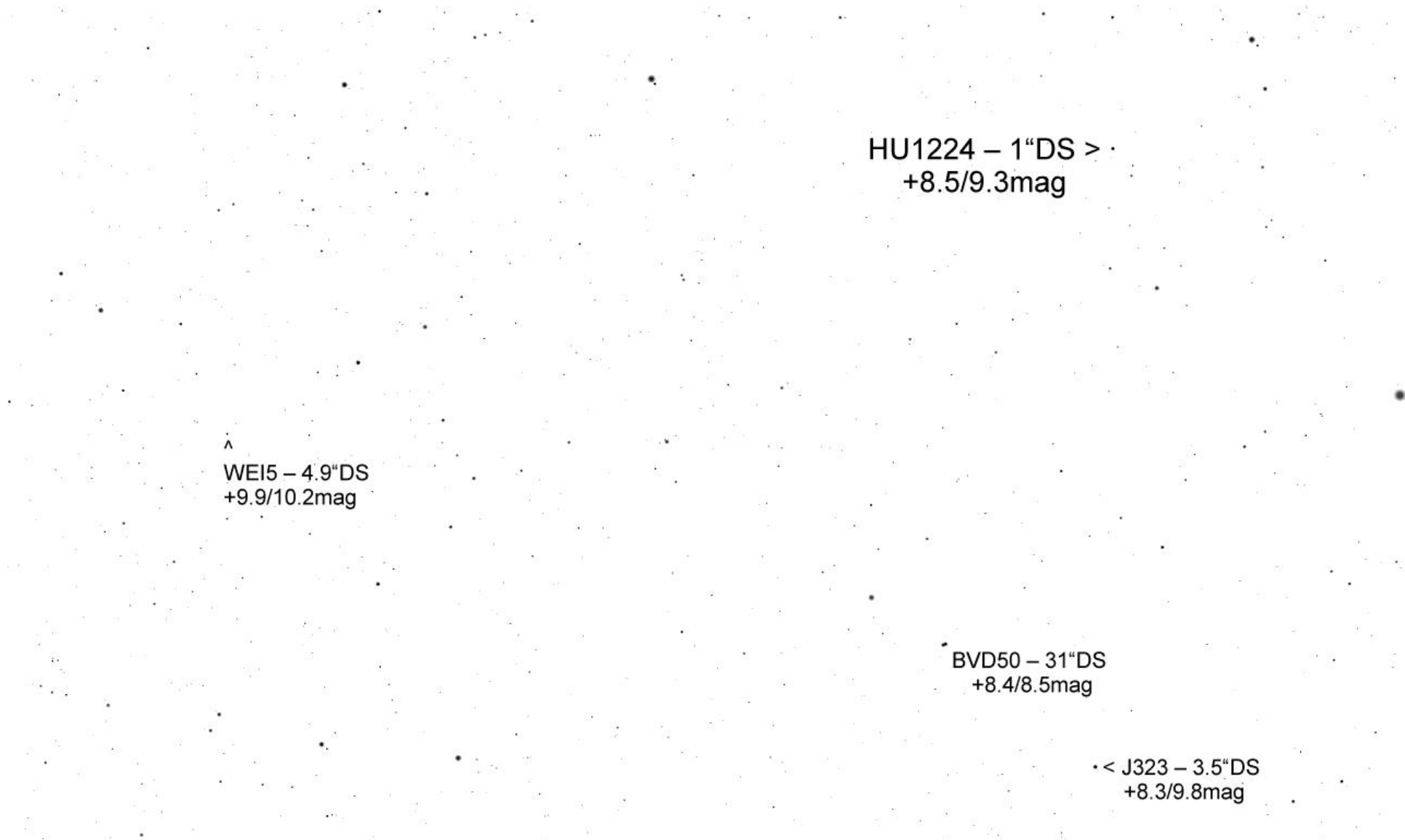


BVD50 – 31"DS
+8.4/8.5mag

^
J323 – 3.5"DS
+8.3/9.8mag

STF664 – 4.8"DS
+7.8/8.4mag

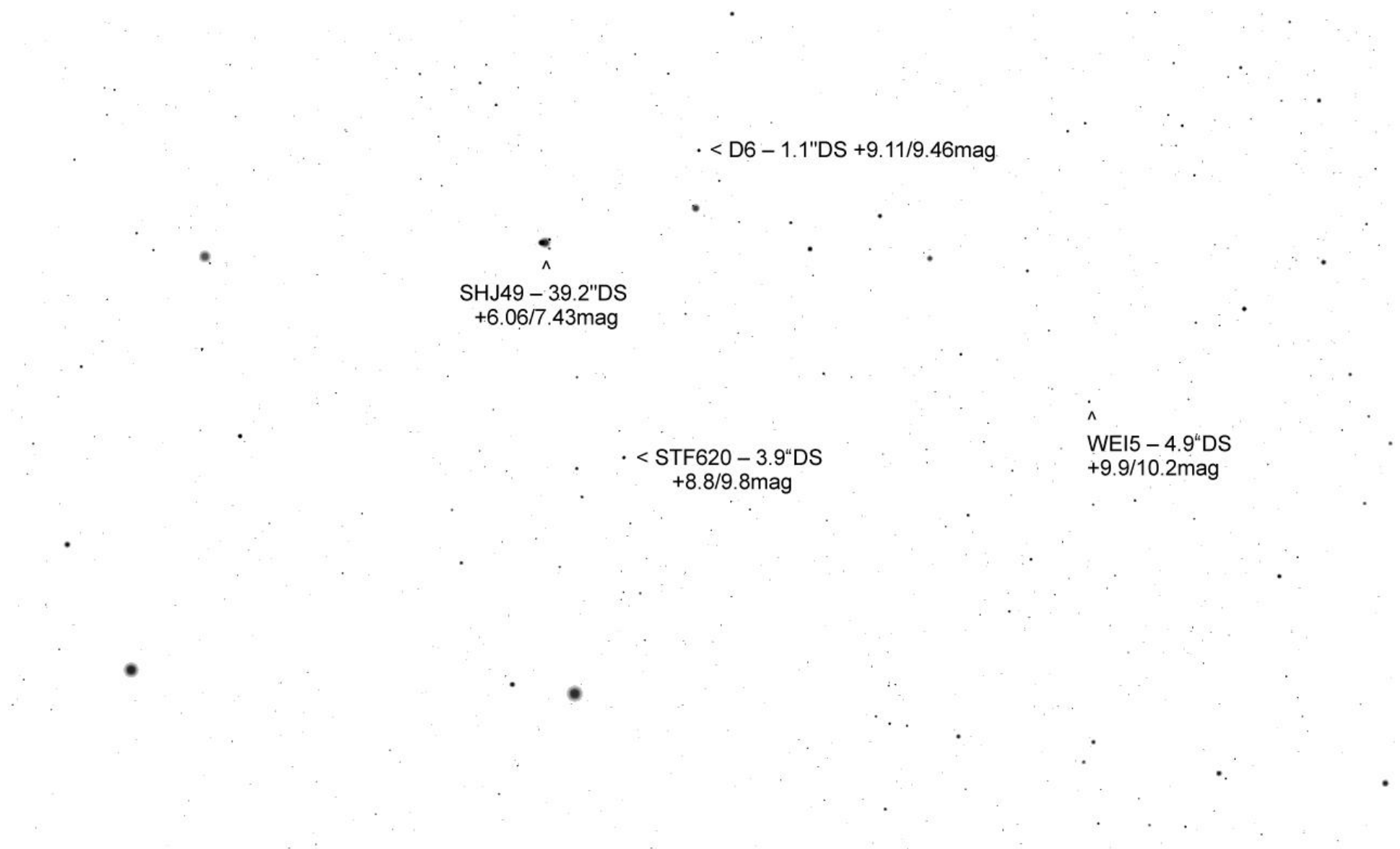


^
WEI5 – 4.9"DS
+9.9/10.2mag

HU1224 – 1"DS >
+8.5/9.3mag

BVD50 – 31"DS
+8.4/8.5mag

< J323 – 3.5"DS
+8.3/9.8mag



^
SHJ49 - 39.2"DS
+6.06/7.43mag

• < D6 - 1.1"DS +9.11/9.46mag

• < STF620 - 3.9"DS
+8.8/9.8mag

^
WEI5 - 4.9"DS
+9.9/10.2mag

• < STF620 – 3.9"DS
+8.8/9.8mag

• < WEI5 – 4.9"DS
+9.9/10.2mag

^
HEI458 – 2.6"DS
+9.9/10mag

• < S463 – 32.6"DS
+7.2/10.1mag

^
S463 – 32.6"DS
+7.2/10.1mag

< STF626 – 24.2"DS +8/10.4mag

BU404 – 1.7"DS
+9.6/9.7mag
v

< NGC 1662 – OSH
+6.4mag

BU404 – 1.7"DS
+9.6/9.7mag
v

• < STT90 – 1.8"DS
+7/9mag

• < STF612 – 16.1"DS
+8.3/8.4mag

