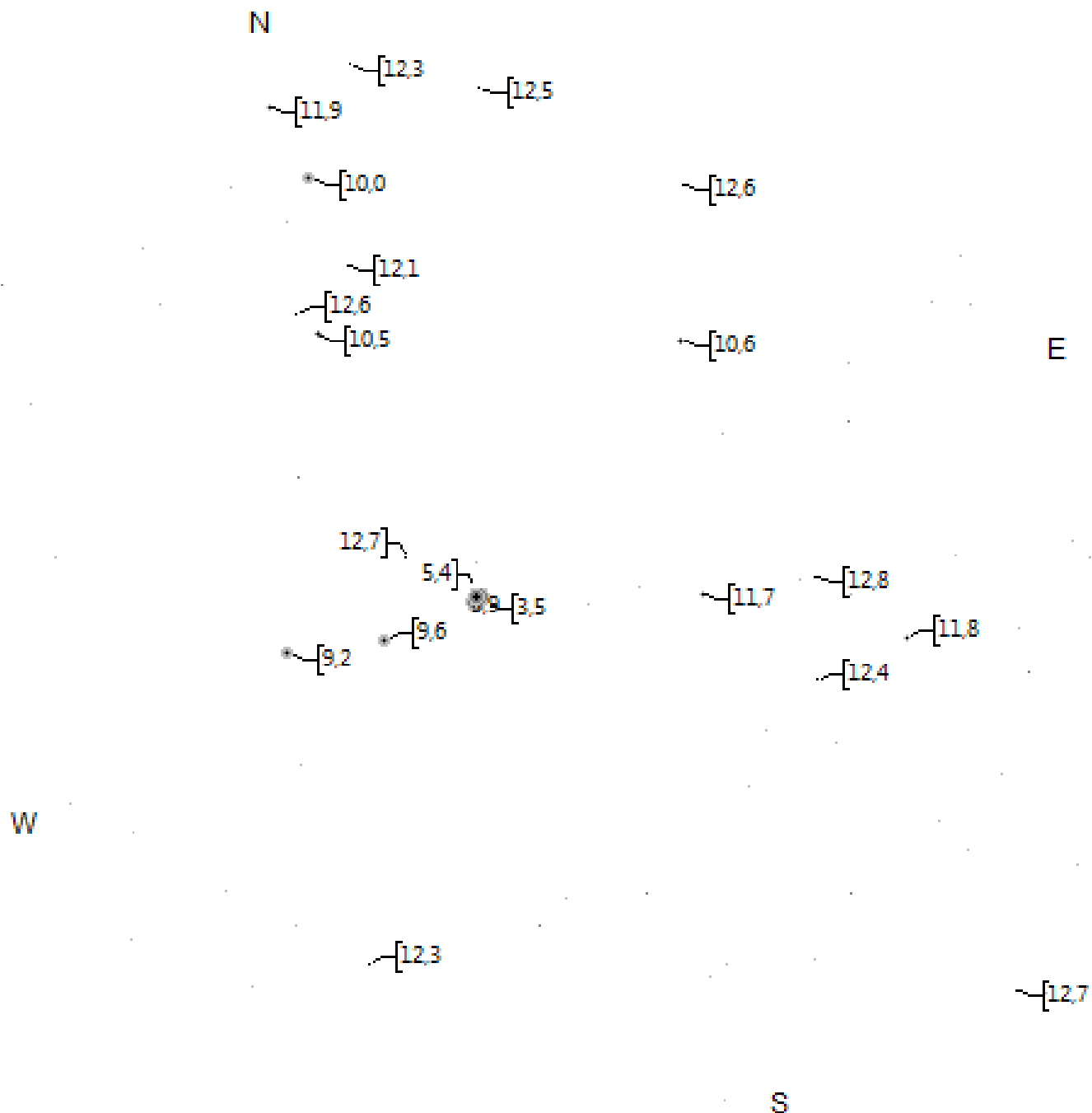


Orion



TML Lambda Ori per Mitte Februar 15' FoV



^
STF724 6.9"DS
+8.7/10mag

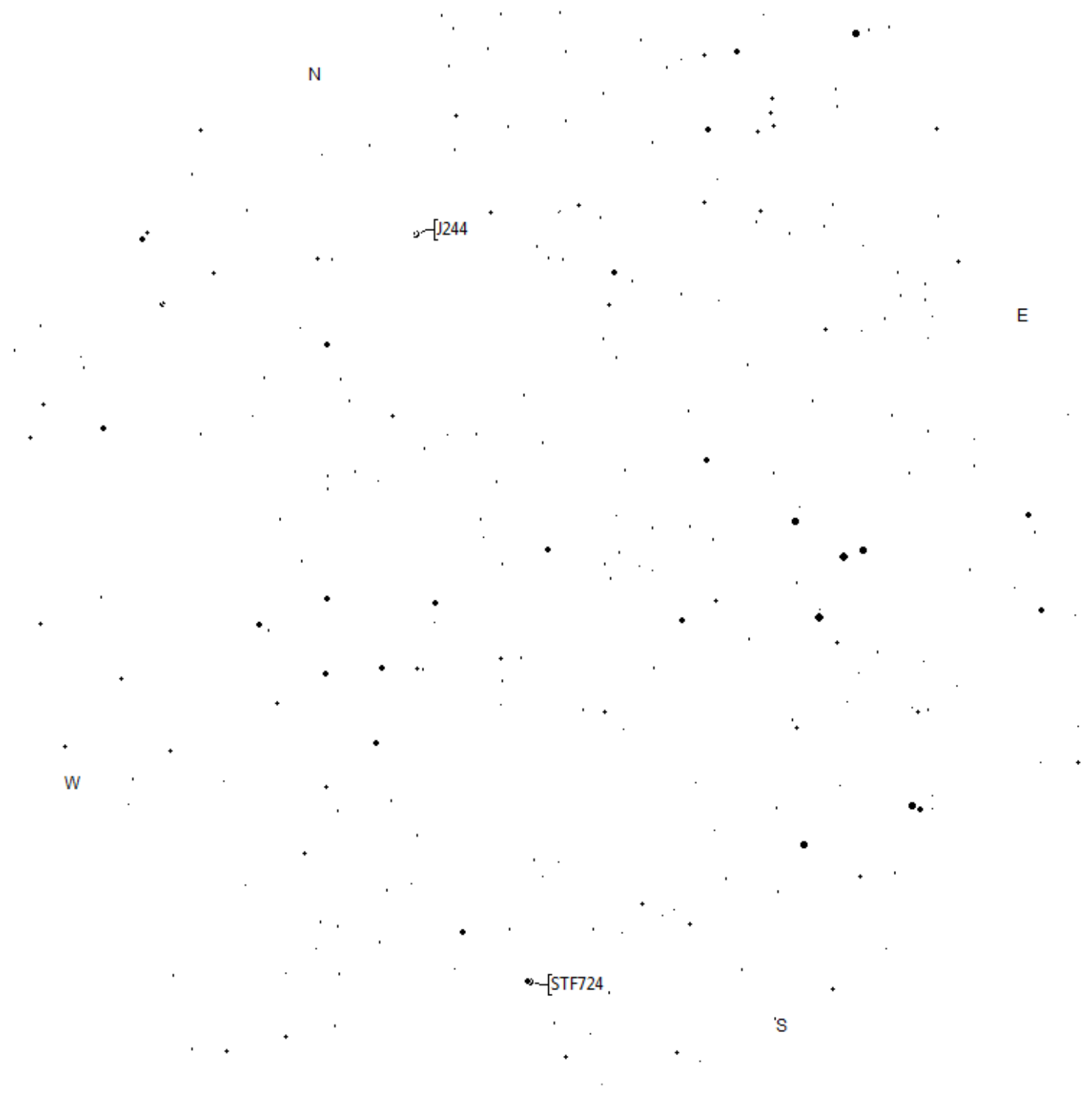
STF726 1.2"
+8/8.5mag
v

Lambda Ori
4.9/28.6/78.3"QS
+3.5/5.5/10.7/11.2mag

STT111 2.8"DS
+5.7/9.7mag

^
STF763 5.8"DS
+8.9/9.5mag

Beach Chair
Lambda-Lambda



N

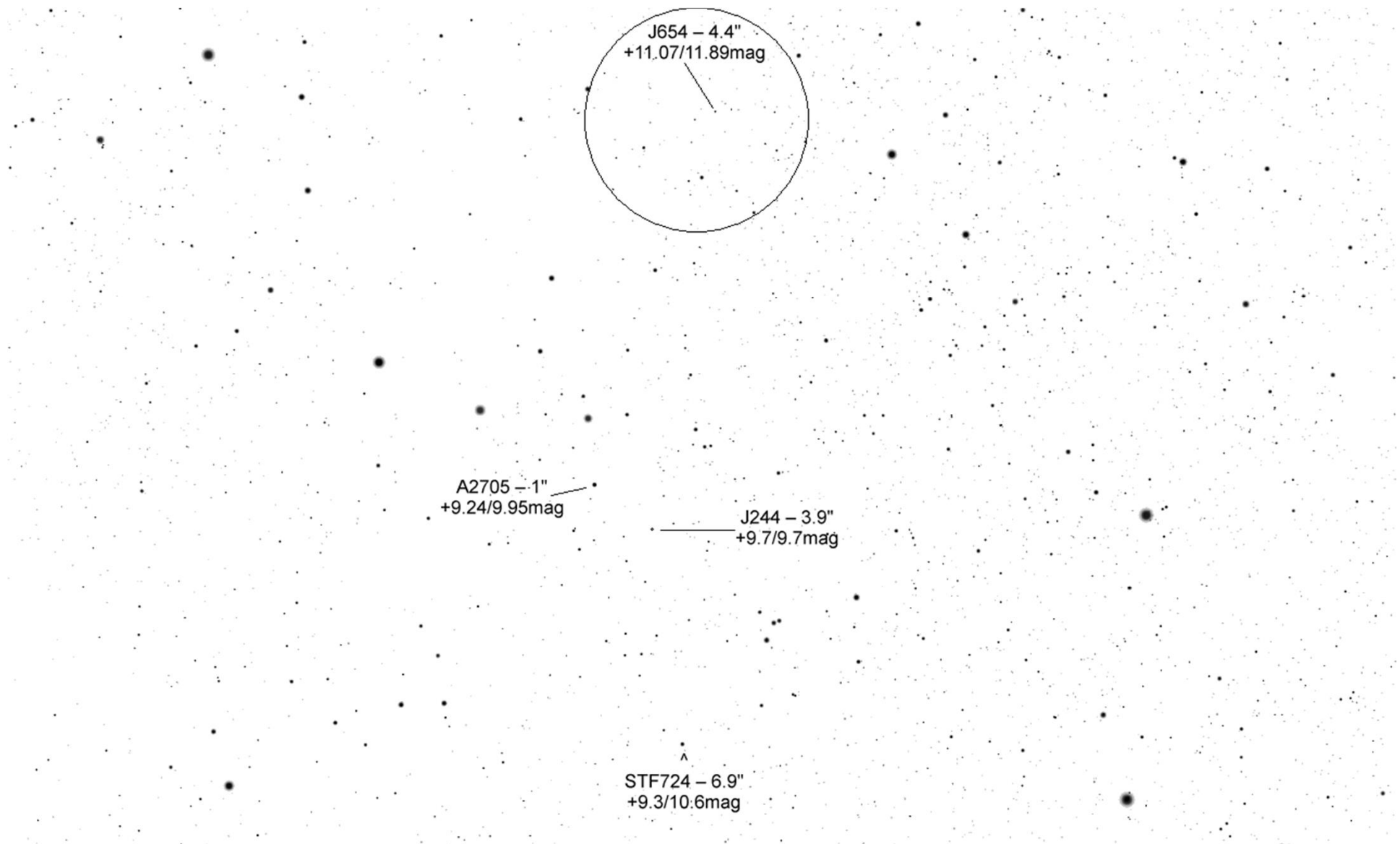
J244

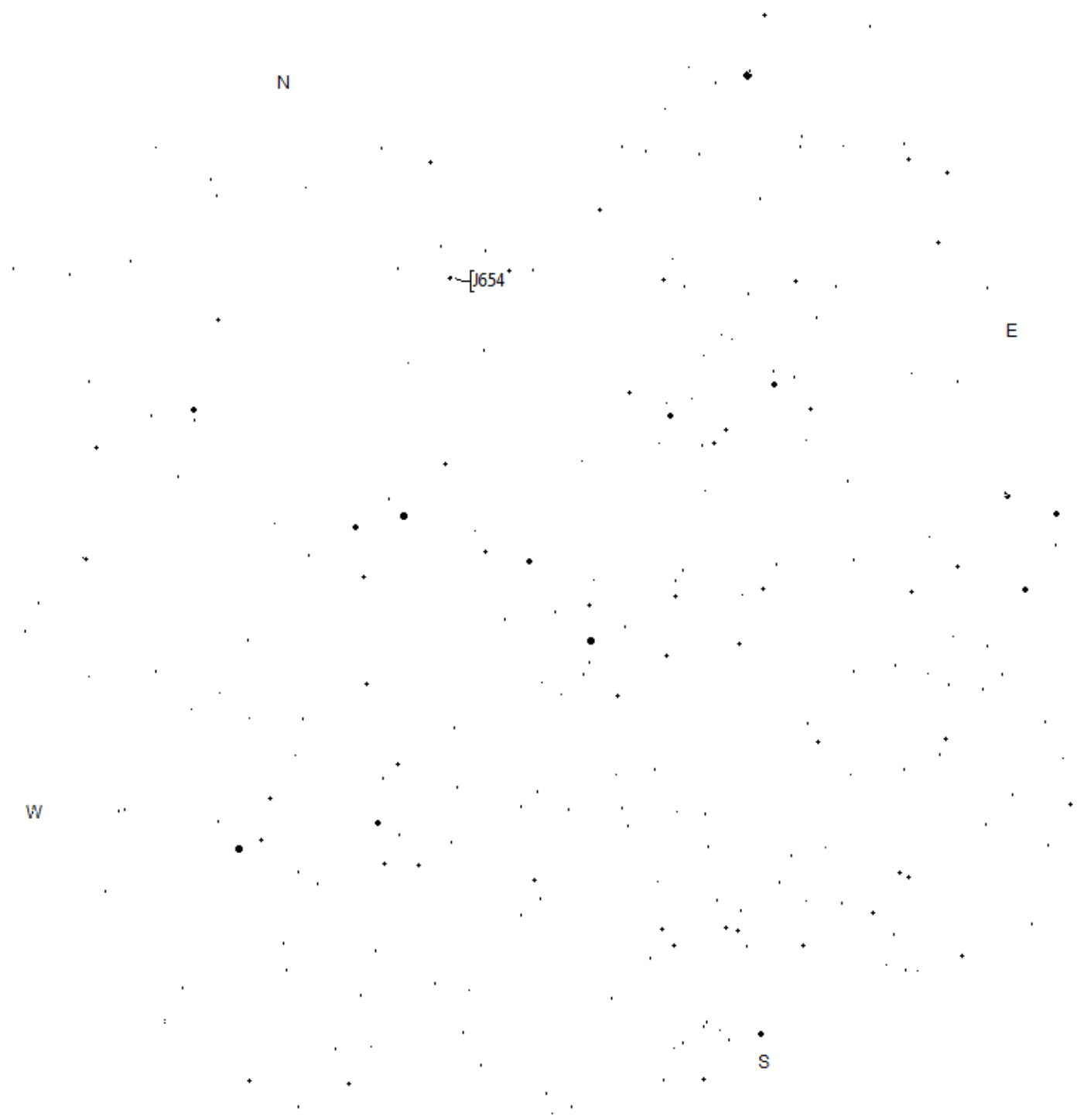
E

W

STF724

S





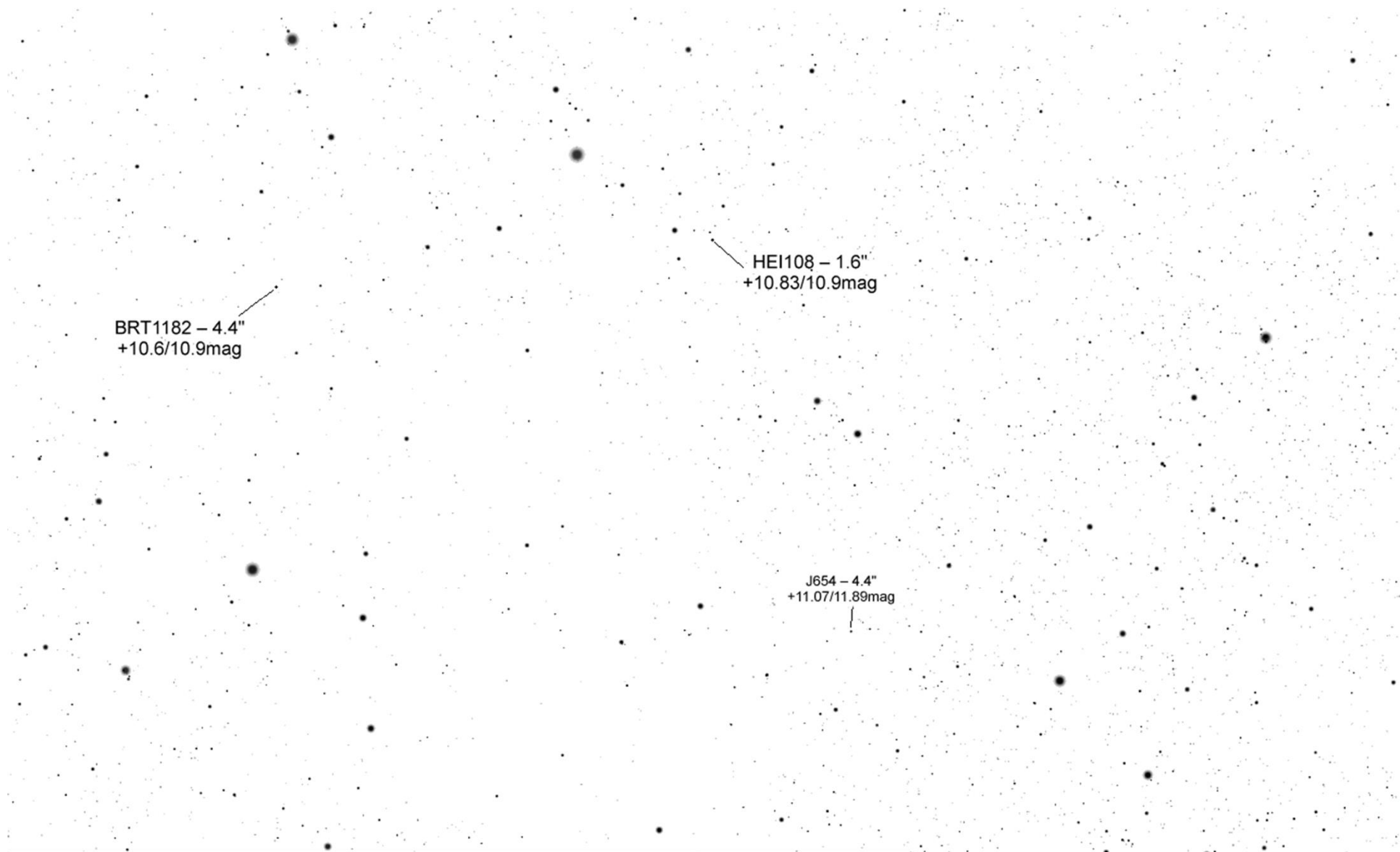
N

1654

E

W

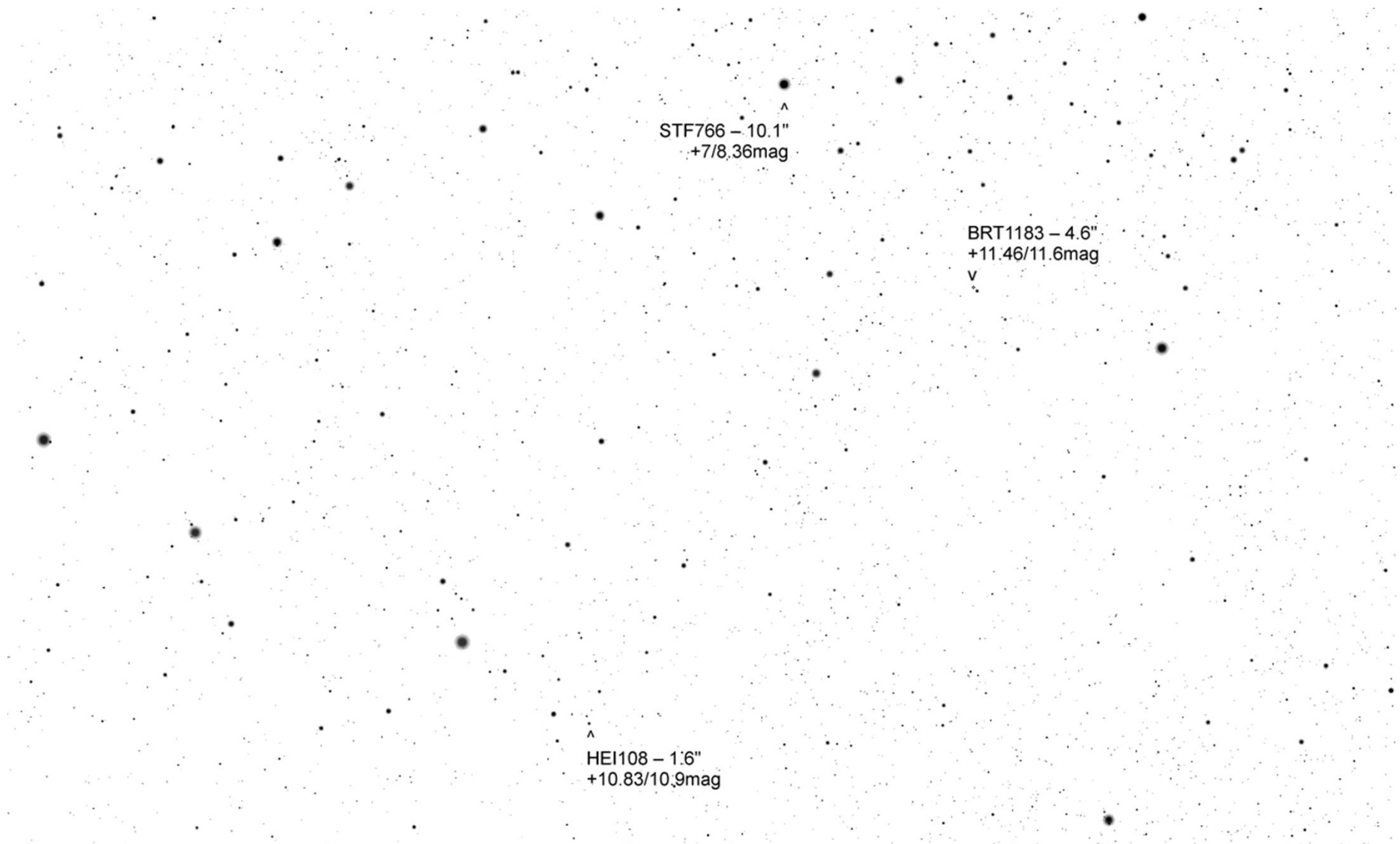
S



BRT1182 – 4.4"
+10.6/10.9mag

HEI108 – 1.6"
+10.83/10.9mag

J654 – 4.4"
+11.07/11.89mag



^
STF766 – 10.1"
+7/8.36mag

BRT1183 – 4.6"
+11.46/11.6mag
v

^
HE1108 – 1.6"
+10.83/10.9mag

