

STT123 2.1"DS
+7.3/9.1mag

< AG320 22.7"DS +9.5/10mag

< ARG63 32.6"DS
+8.7/9.1mag

○
^
NGC 2141 OSH
+9.4mag

^
J310 2.4"DS
+9.8/10mag

^
STF840 21.4"DS
+7.2/8.9mag

●
Mu Ori +4.3mag

STF853 36.8"DS +8.5/9mag

STF840 21.4"DS +7.2/8.9mag

HJ720 30.1"DS =>
+9.6/9.8mag

STF880 5.4"DS +8.4/8.7mag

HO22 - 1"DS
+8.5/8.64mag

J2736 6.1"DS
+9.5/9.8mag =>

STF853 36.8"DS +8.5/9mag

HJ720 30.1"DS
+9.6/9.8mag

HO22 - 1"DS
+8.5/8.64mag

STF880 5.4"DS
+8.4/8.7mag

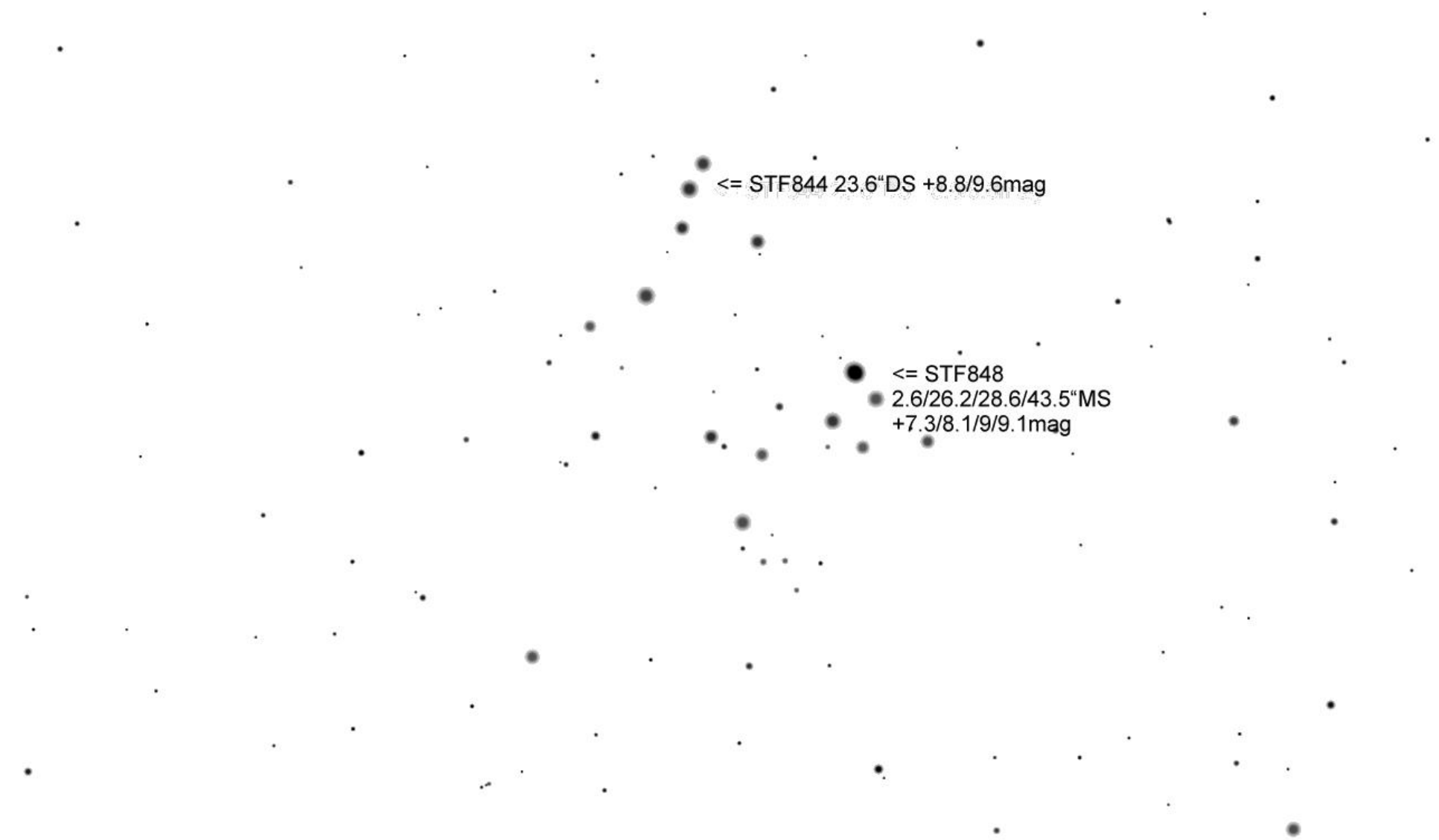
STF898 5.9"DS
+9/9.6mag

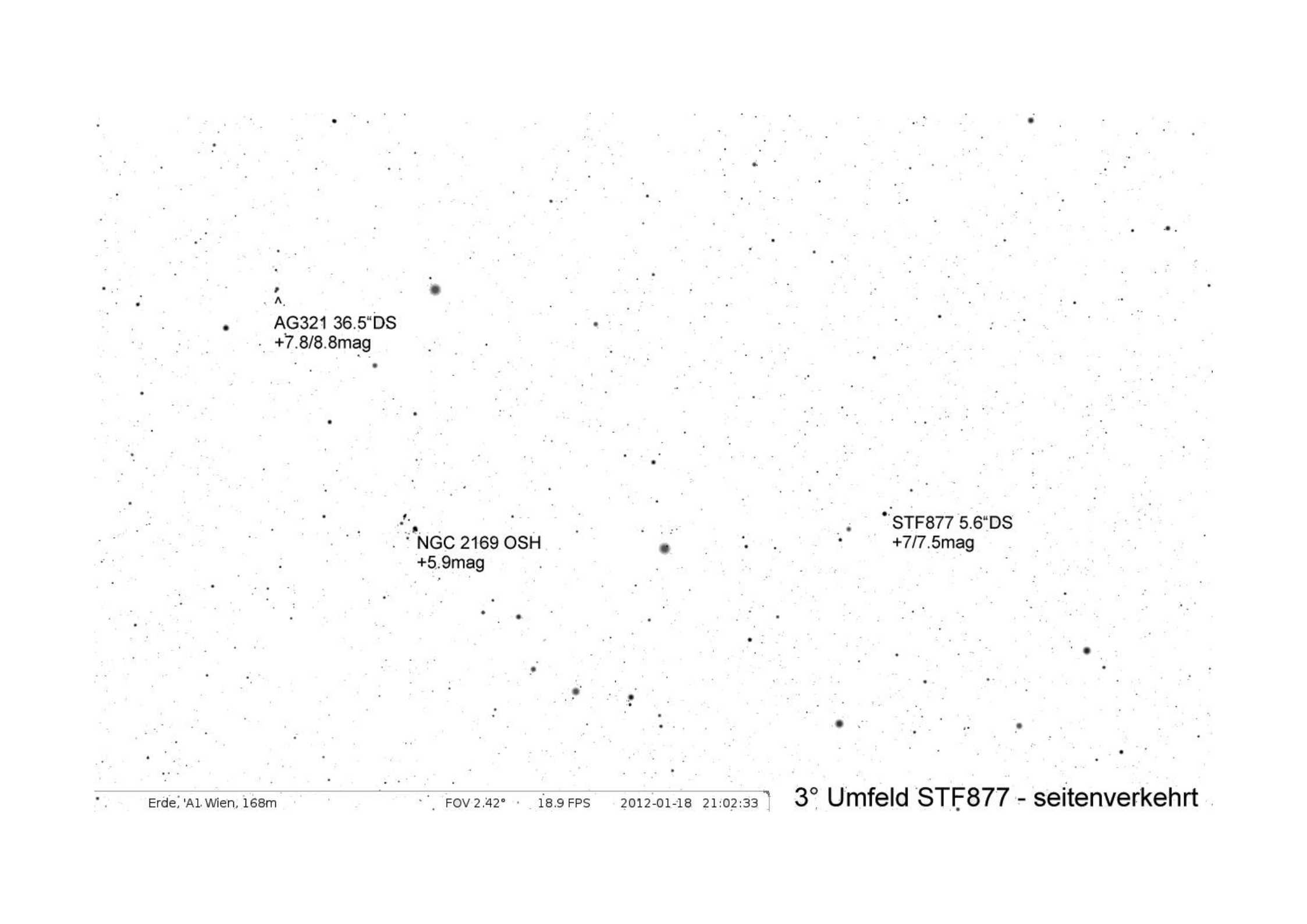
STF901.19.8"DS
+7.8/10.4mag

NGC 2169
OSH +5.9mag

HO228 2.4"DS ^
+7.7/10.2mag

STF853 36.8"DS +8.5/9mag





AG321 36.5"DS
+7.8/8.8mag

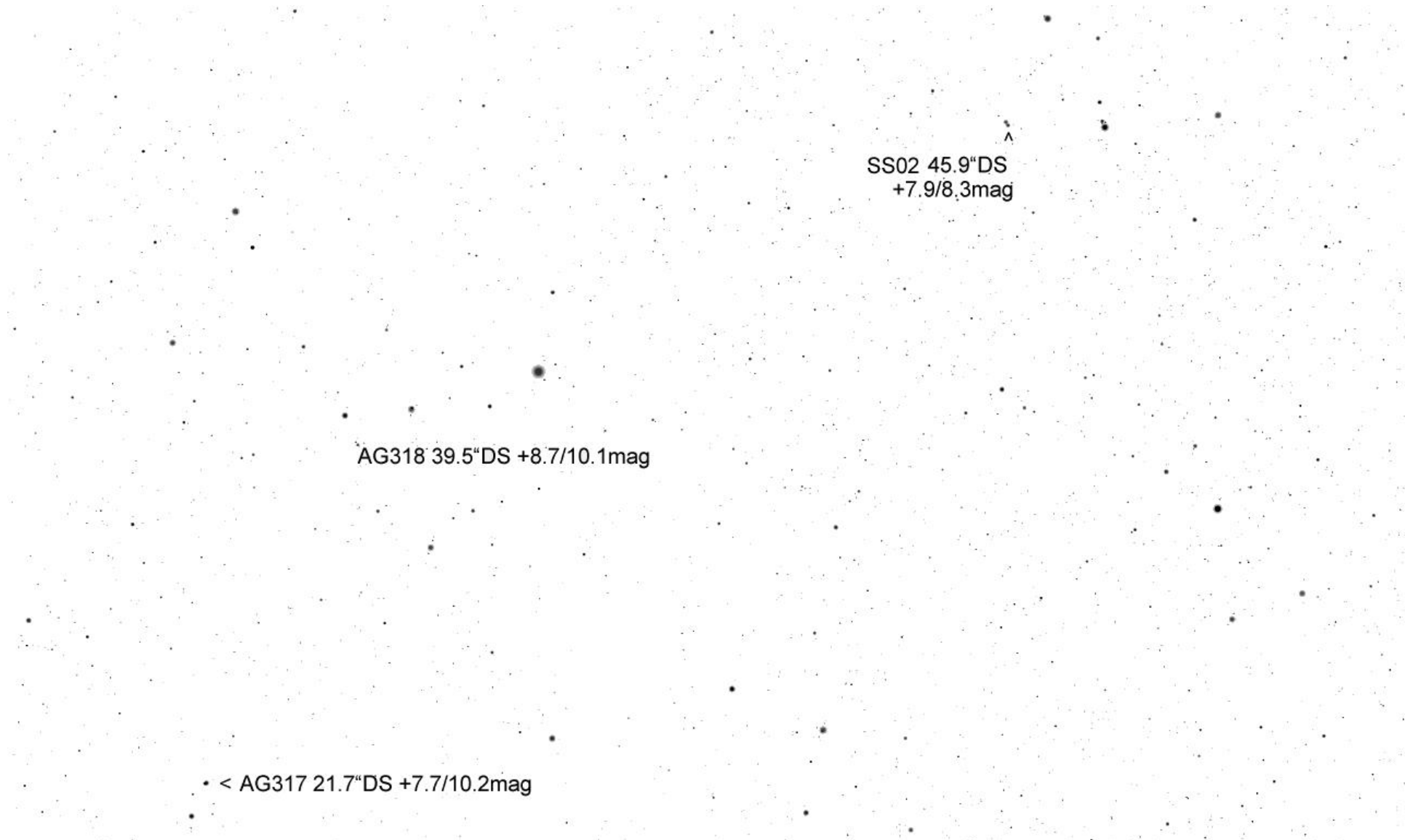
NGC 2169 OSH
+5.9mag

STF877 5.6"DS
+7/7.5mag

SS02 45.9°DS
+7.9/8.3mag

AG321 36.5°DS
+7.8/8.8mag

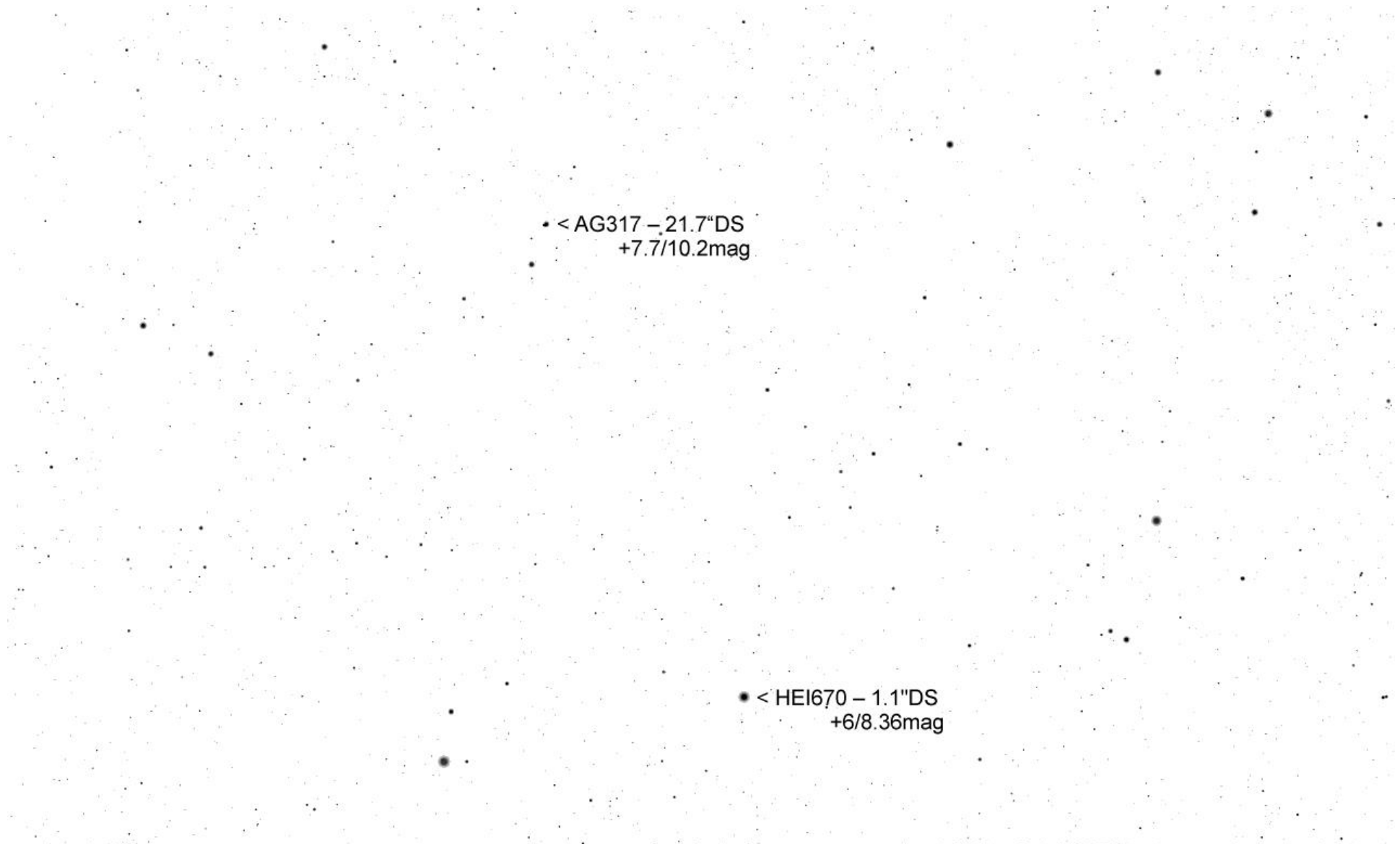
NGC 2169 ^
OSH +5.9mag



SS02 45.9"DS
+7.9/8.3mag

AG318 39.5"DS +8.7/10.1mag

• < AG317 21.7"DS +7.7/10.2mag



• < AG317 – 21.7"DS
+7.7/10.2mag

• < HEI670 – 1.1"DS
+6/8.36mag