

Gamma Gem +1.9mag

• < STT140 – 2.7"DS
+6.92/10.98mag

J909 – 3.3"DS +9.7/9.7mag >

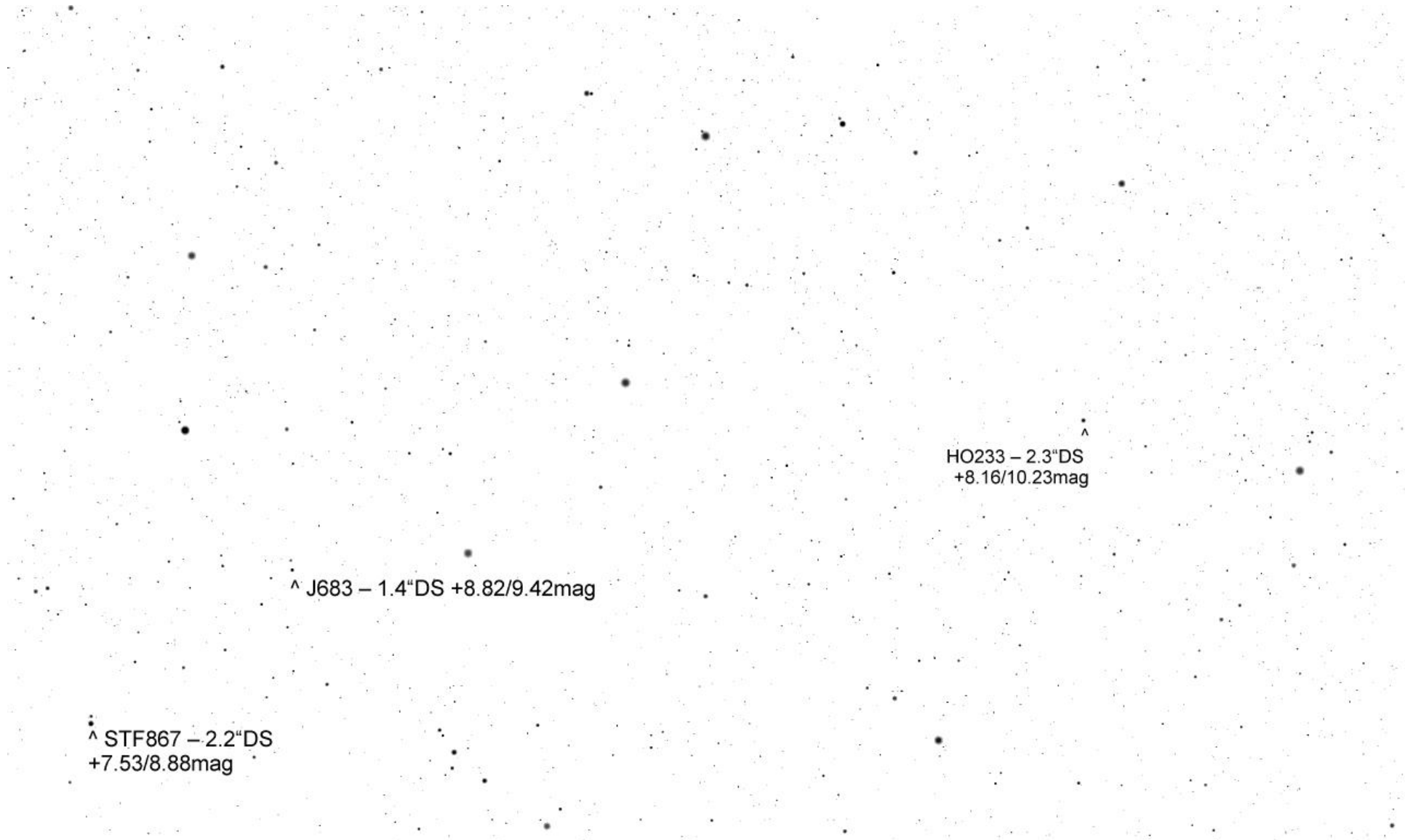
< TOR9 – 2"DS +9.6/9.6mag

HO233 – 2.3"DS
+8.16/10.23mag

< STT140 – 2.7"DS
+6.92/10.98mag

A2722 – 1"DS +9.21/10.49mag

v



HO233 – 2.3"DS
+8.16/10.23mag

^ J683 – 1.4"DS +8.82/9.42mag

^ STF867 – 2.2"DS
+7.53/8.88mag

STF835 – 2.4"DS
+9.1/10.1mag
v

• < HDS824 – 2.3"DS
+8.15/9.25mag

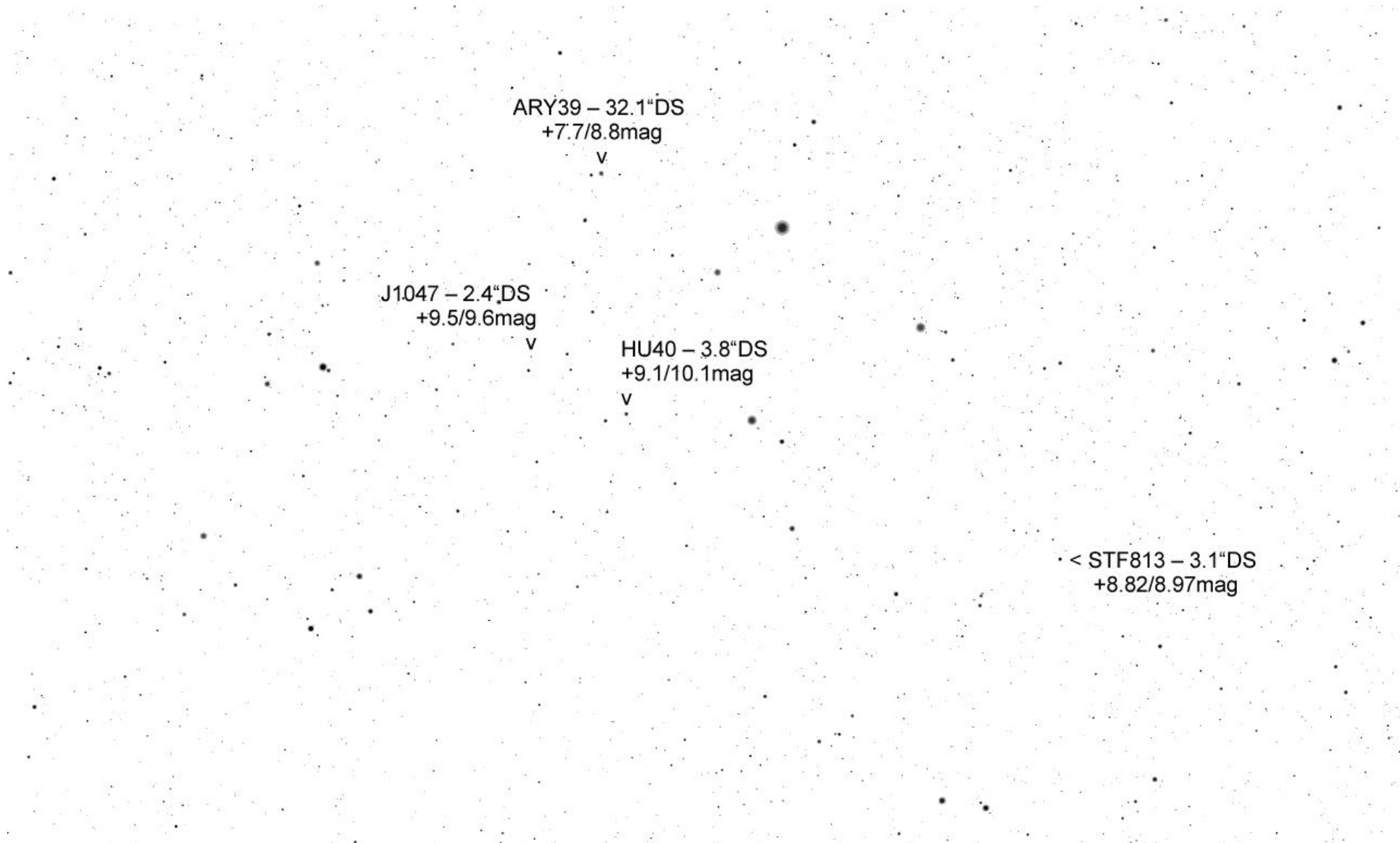
STF849 – 0.9"DS
+9.18/9.48mag
v

^ STF867 – 2.2"DS
+7.53/8.88mag



· < STF813 – 3.1"DS
+8.82/8.97mag

· < HDS824 – 2.3"DS
+8.15/9.25mag



ARY39 – 32.1"DS
+7.7/8.8mag

v

J1047 – 2.4"DS
+9.5/9.6mag

v

HU40 – 3.8"DS
+9.1/10.1mag

v

< STF813 – 3.1"DS
+8.82/8.97mag

STT125 – 1.4"DS
+7.89/8.89mag

J1926 – 6.2"DS
+9.4/10.4mag

NGC 2175 – OSH
+6.8mag

< BRT2336 – 4.3"DS +9.9/10.1mag

ARY39 – 32.1"DS
+7.7/8.8mag