

STF678 3.6"DS  
+9.1/9.4mag

A2638 - 1"DS  
+9.24/9.45mag

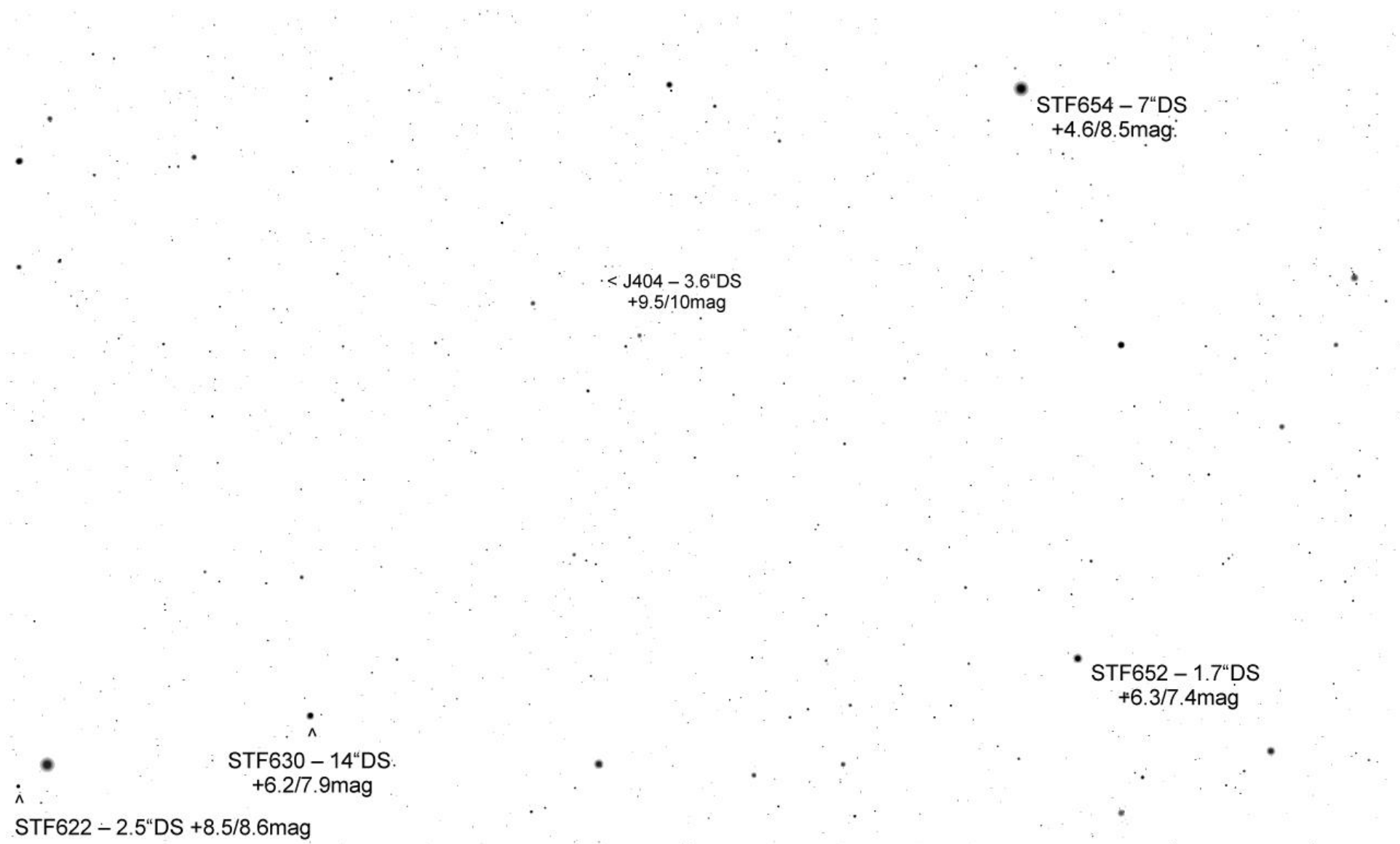
v

A2639 - 0.8"DS  
+8.58/9.67mag

^

KU86 35.6"DS +9.5/10mag

STF654 7"DS +4.6/8.5mag



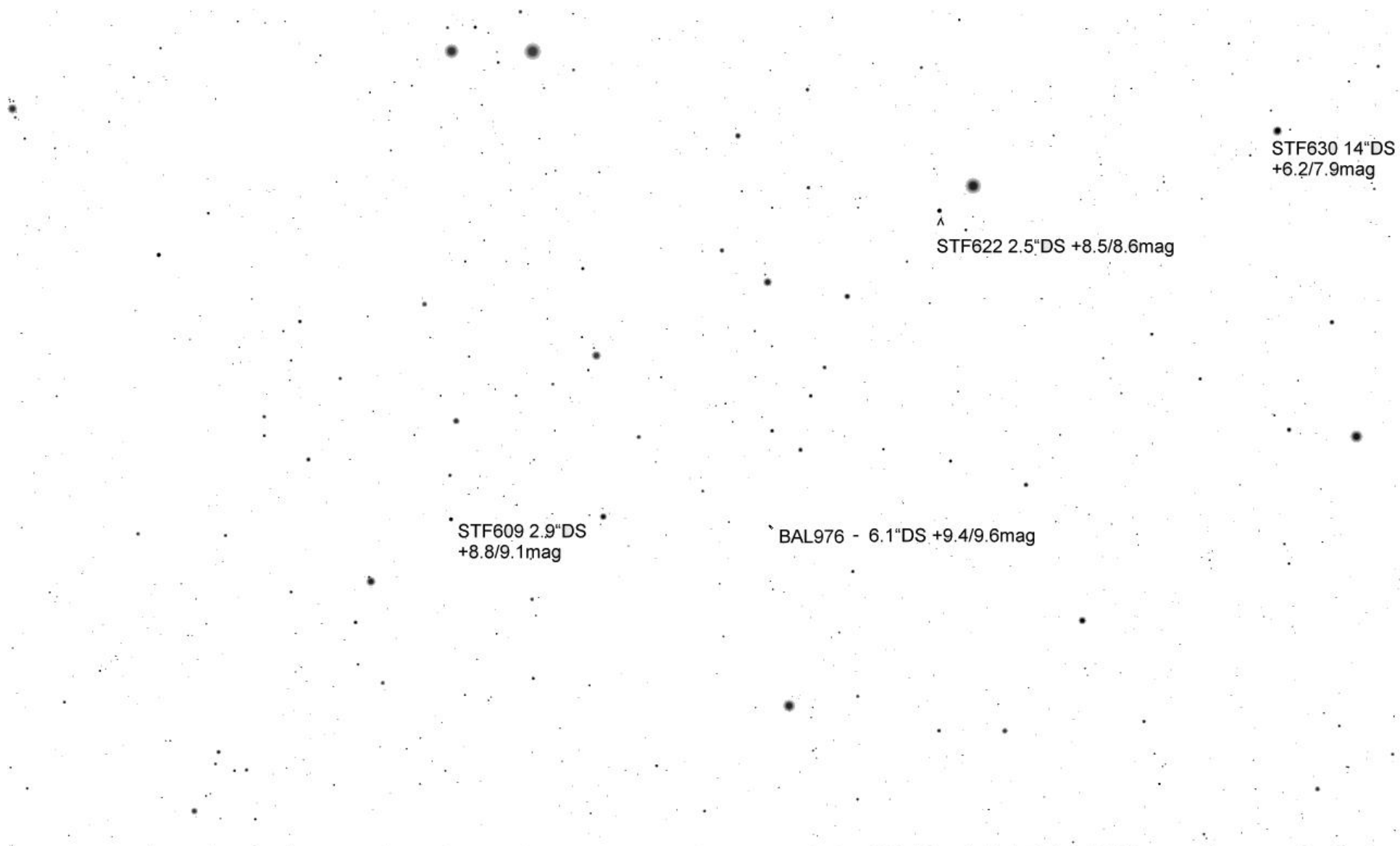
STF654 – 7"DS  
+4.6/8.5mag.

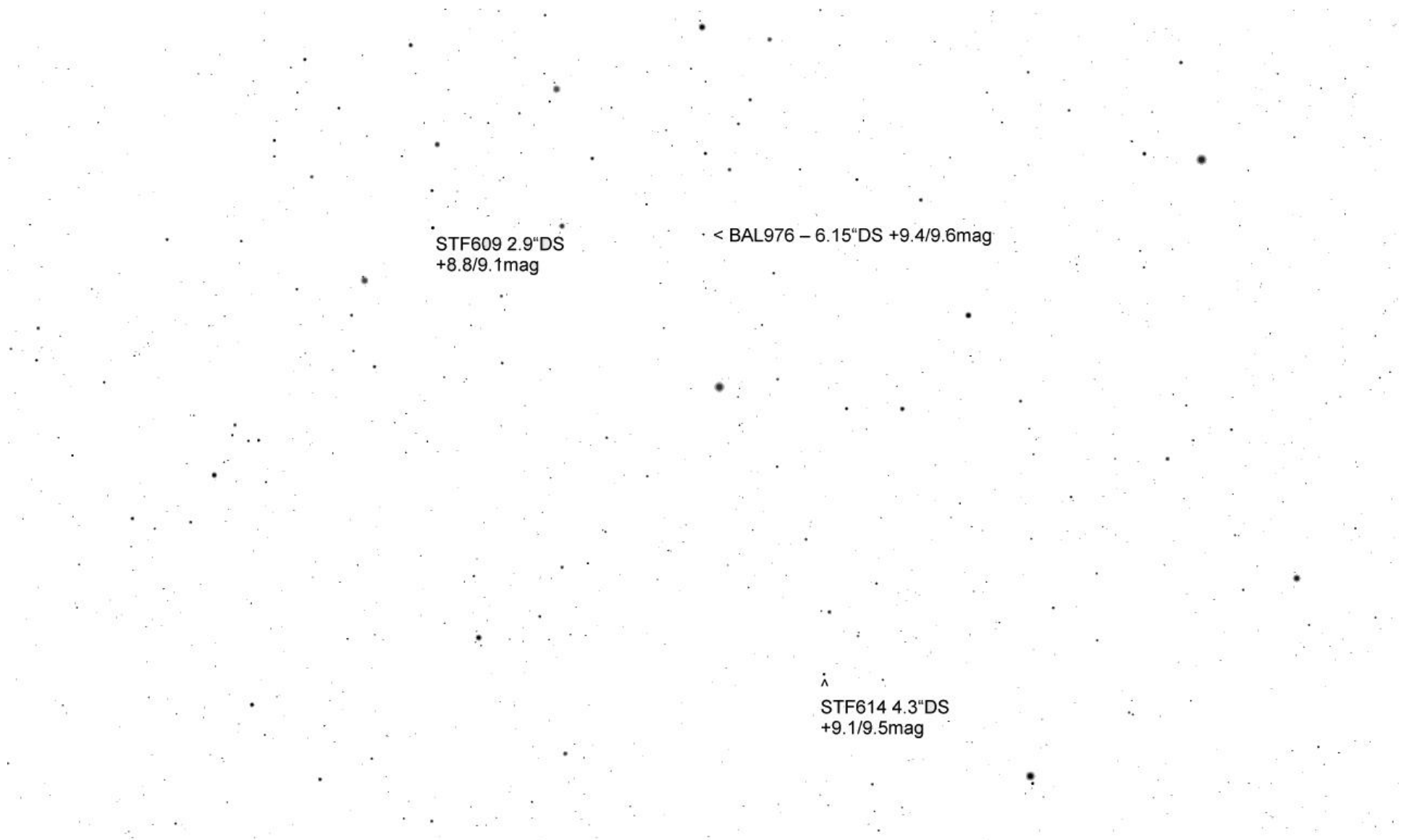
< J404 – 3.6"DS  
+9.5/10mag

STF652 – 1.7"DS  
+6.3/7.4mag

STF630 – 14"DS.  
+6.2/7.9mag

STF622 – 2.5"DS +8.5/8.6mag





STF609 2.9"DS  
+8.8/9.1mag

< BAL976 - 6.15"DS +9.4/9.6mag

^  
STF614 4.3"DS  
+9.1/9.5mag