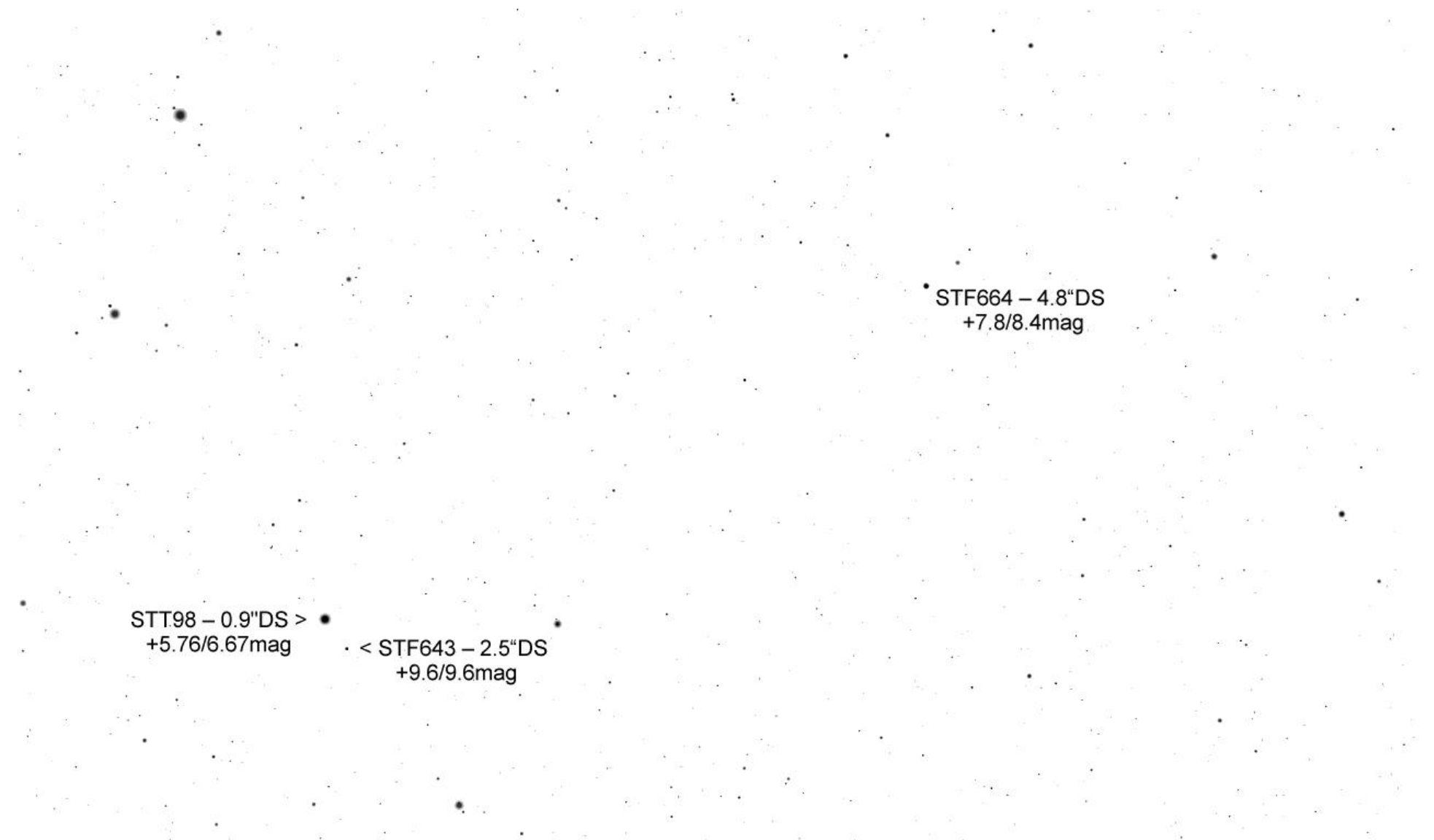


STF664 – 4.8" DS
+7.8/8.4mag

Gam. Ori
+1.6mag



STT98 – 0.9"DS >
+5.76/6.67mag

< STF643 – 2.5"DS
+9.6/9.6mag

STF664 – 4.8"DS
+7.8/8.4mag

STT98 – 0.9"DS >
+5.76/6.67mag

^
STF643 – 2.5"DS
+9.6/9.6mag

< AG91 – 11.5"DS +9.8/10.2mag

• < AG91 – 11.5"DS +9.8/10.2mag

^
A2043 – 1.6"DS
+9.25/11.15mag

• < STT93 – 1.5"DS
+8.6/9.2mag

^
AG87 – 34.7"DS
+9.15/11.8mag

STT93 – 1.5"DS
+8.6/9.2mag

v

AG87 – 34.7"DS
+9.15/11.8mag

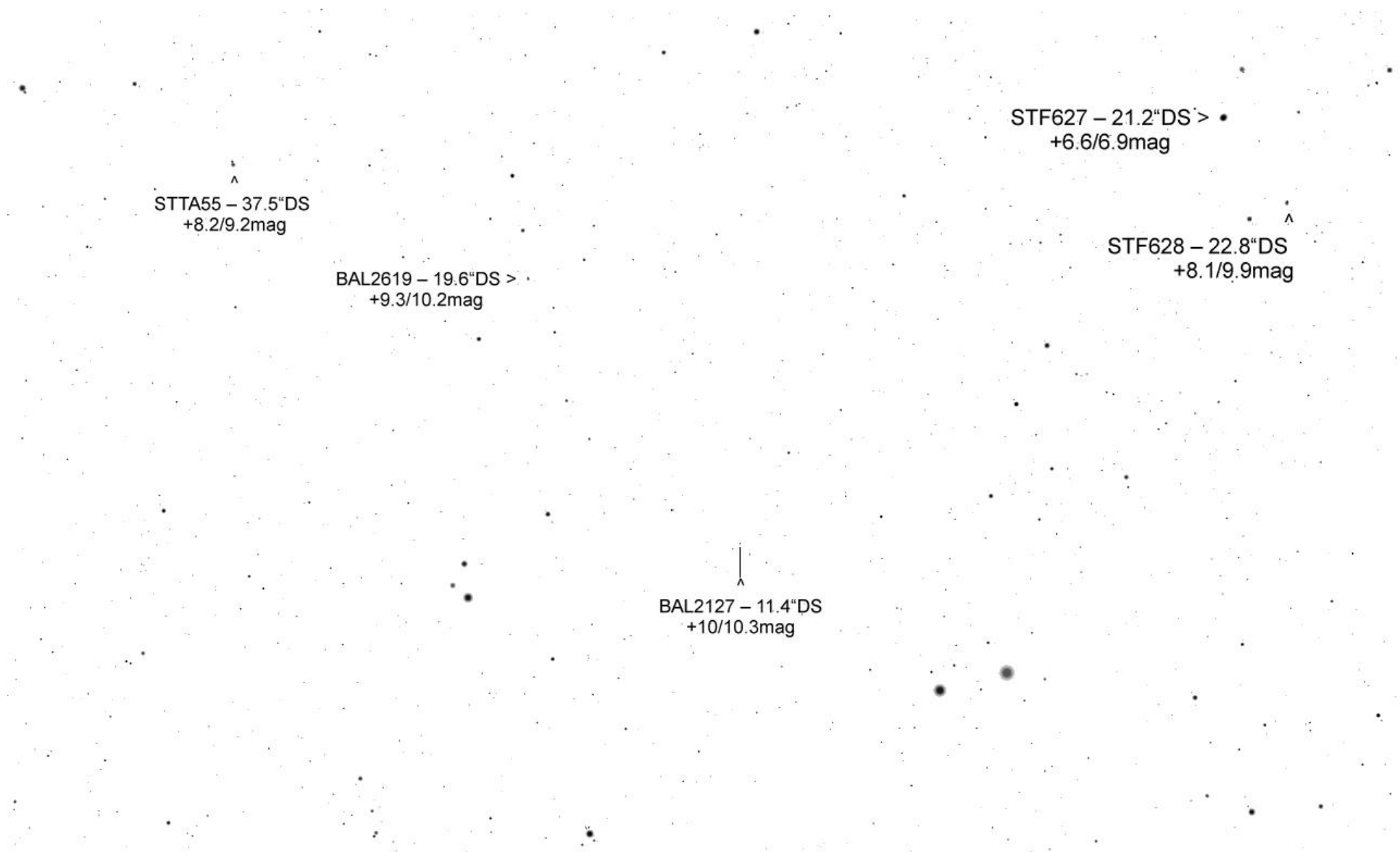
^

< BAL2133 – 3.3"DS +9.2/10.2mag

STF627 – 21.2"DS +6.6/6.9mag

^

< STF628 – 22.8"DS +8.1/9.9mag



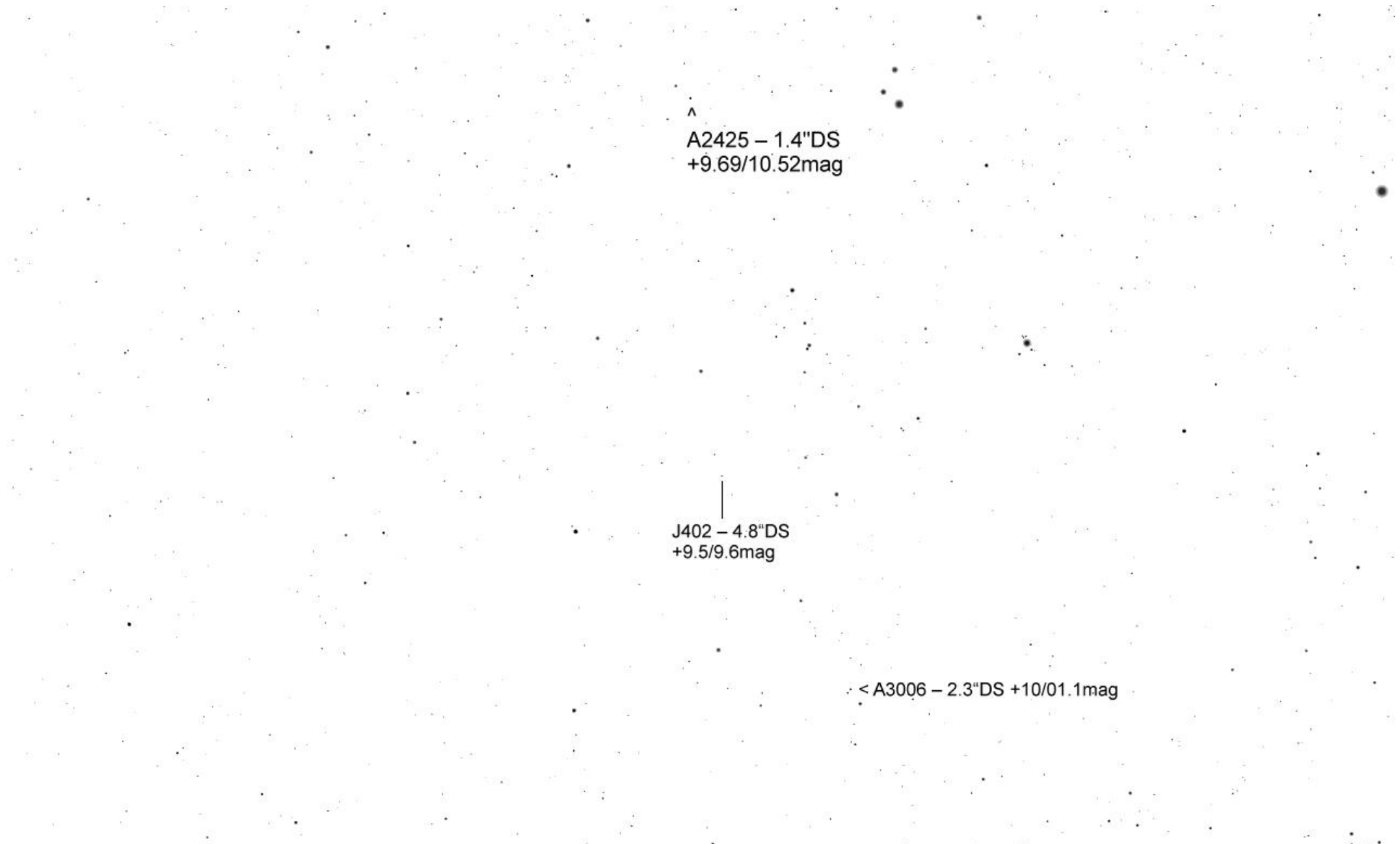
STTA55 – 37.5"DS
+8.2/9.2mag

BAL2619 – 19.6"DS
+9.3/10.2mag

STF589 – 4.4"DS
+8.8/8.9mag

A2425 – 1.4"DS
+9.69/10.52mag

J402 – 4.8"DS +9.5/9.6mag >



^
A2425 – 1.4"DS
+9.69/10.52mag

|
J402 – 4.8"DS
+9.5/9.6mag

< A3006 – 2.3"DS +10/01.1mag