

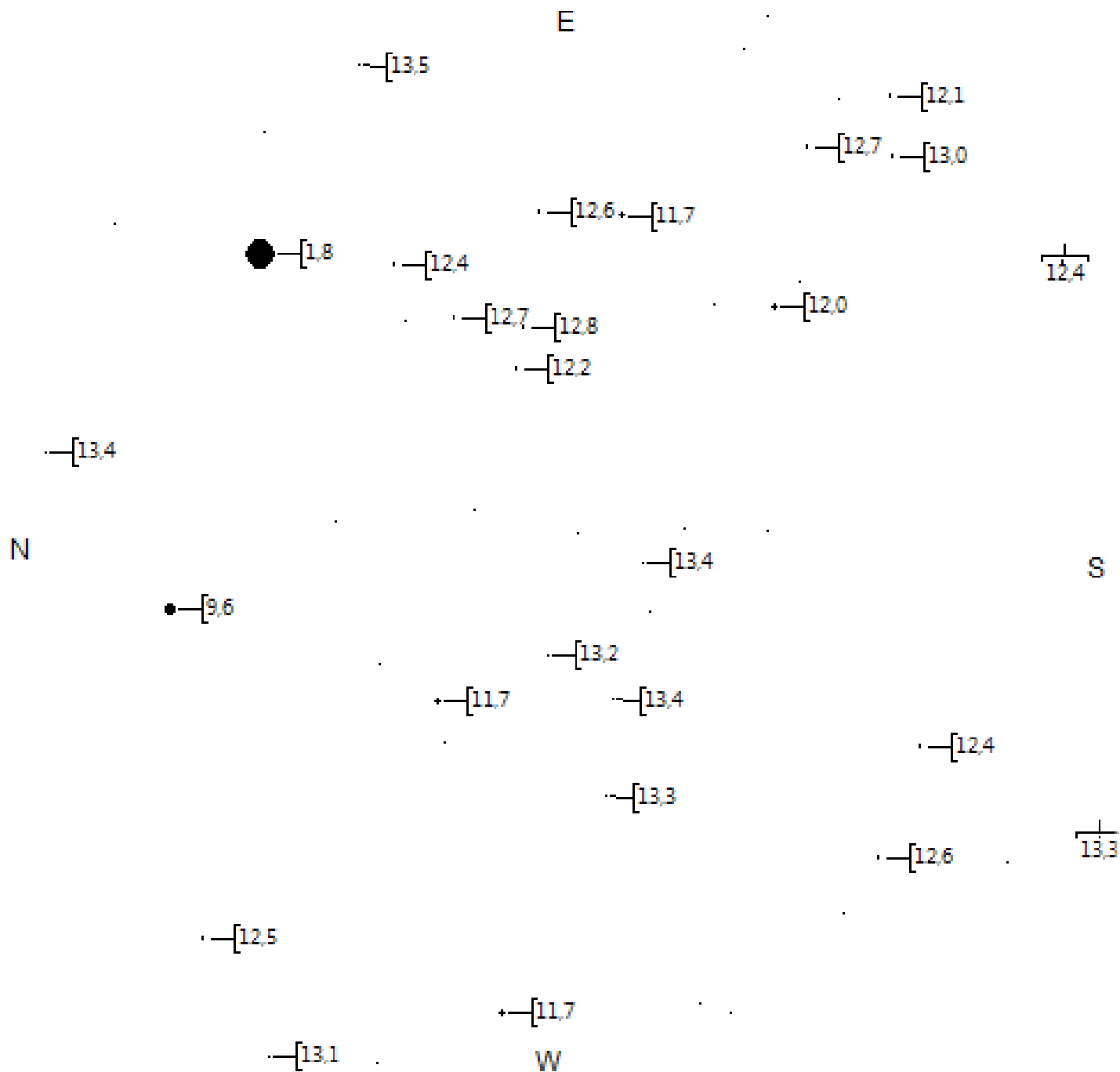
Erde, Wien, 168m

FOV 24°

15.7 FPS

2011-01-15 23:05:54

Perseus



TML Alpha Per per Mitte Jan 15' FoV

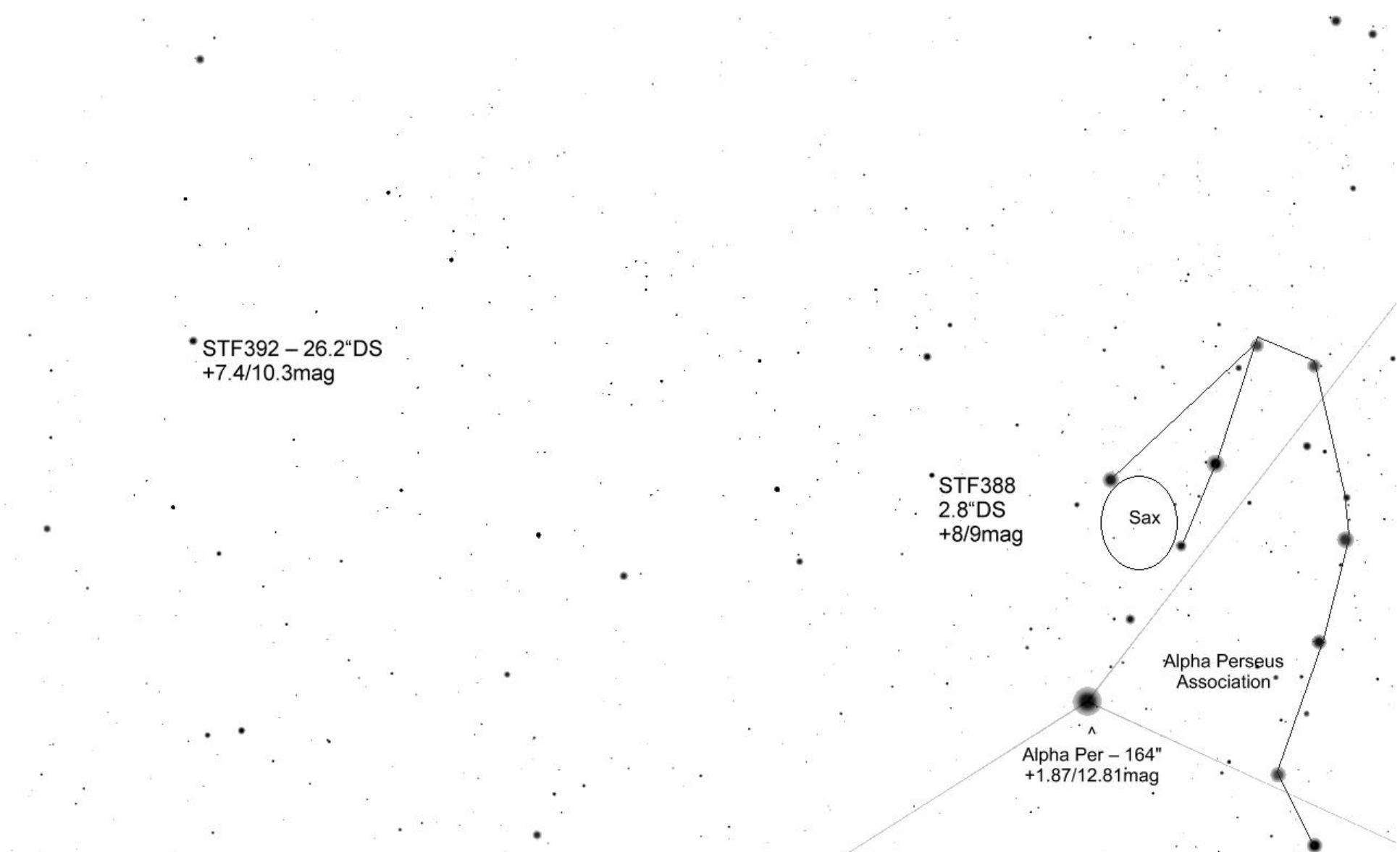
• STF392 – 26.2"DS
+7.4/10.3mag

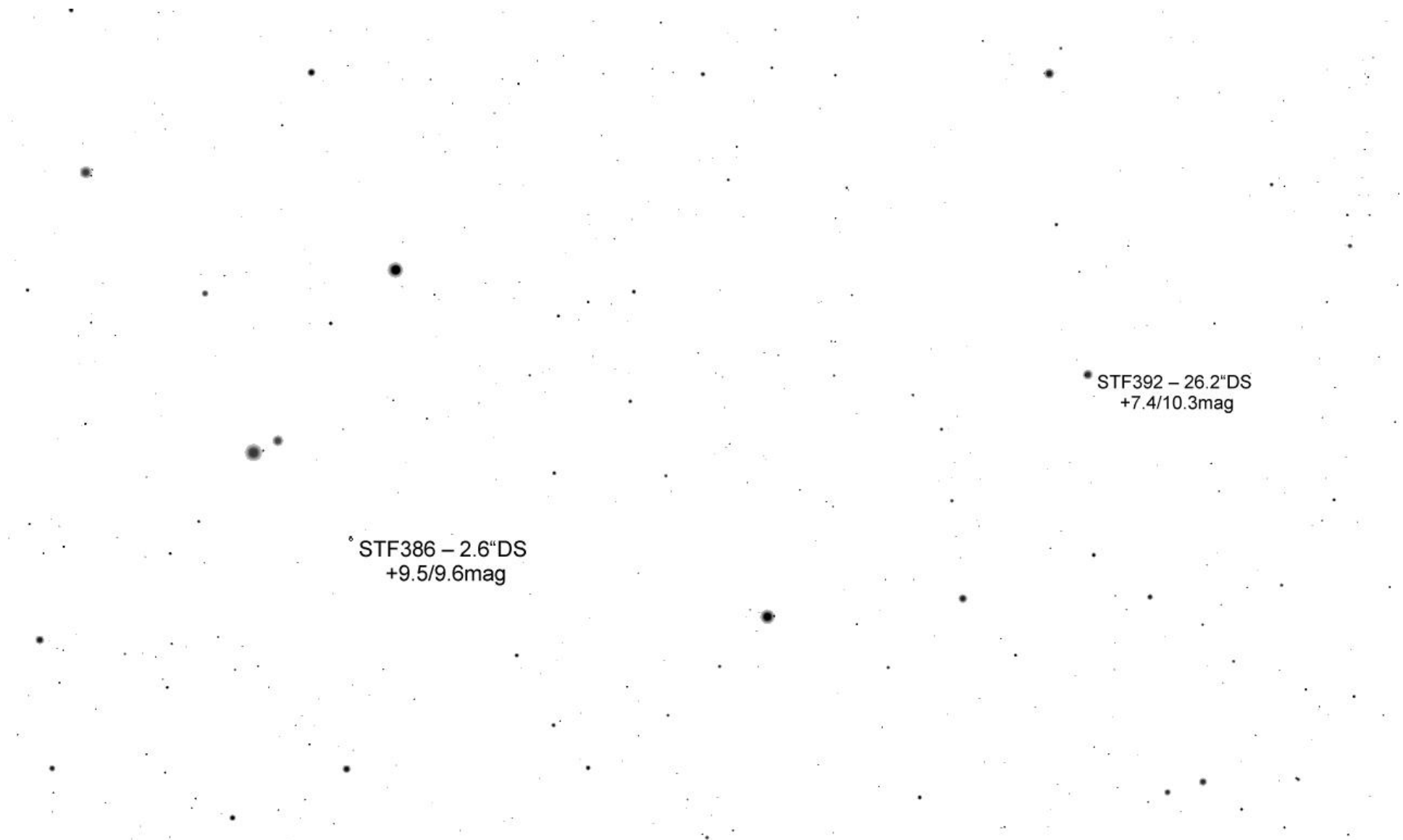
• STF388
2.8"DS
+8/9mag

Sax

Alpha Perseus
Association*

Alpha Per – 164"
+1.87/12.81mag





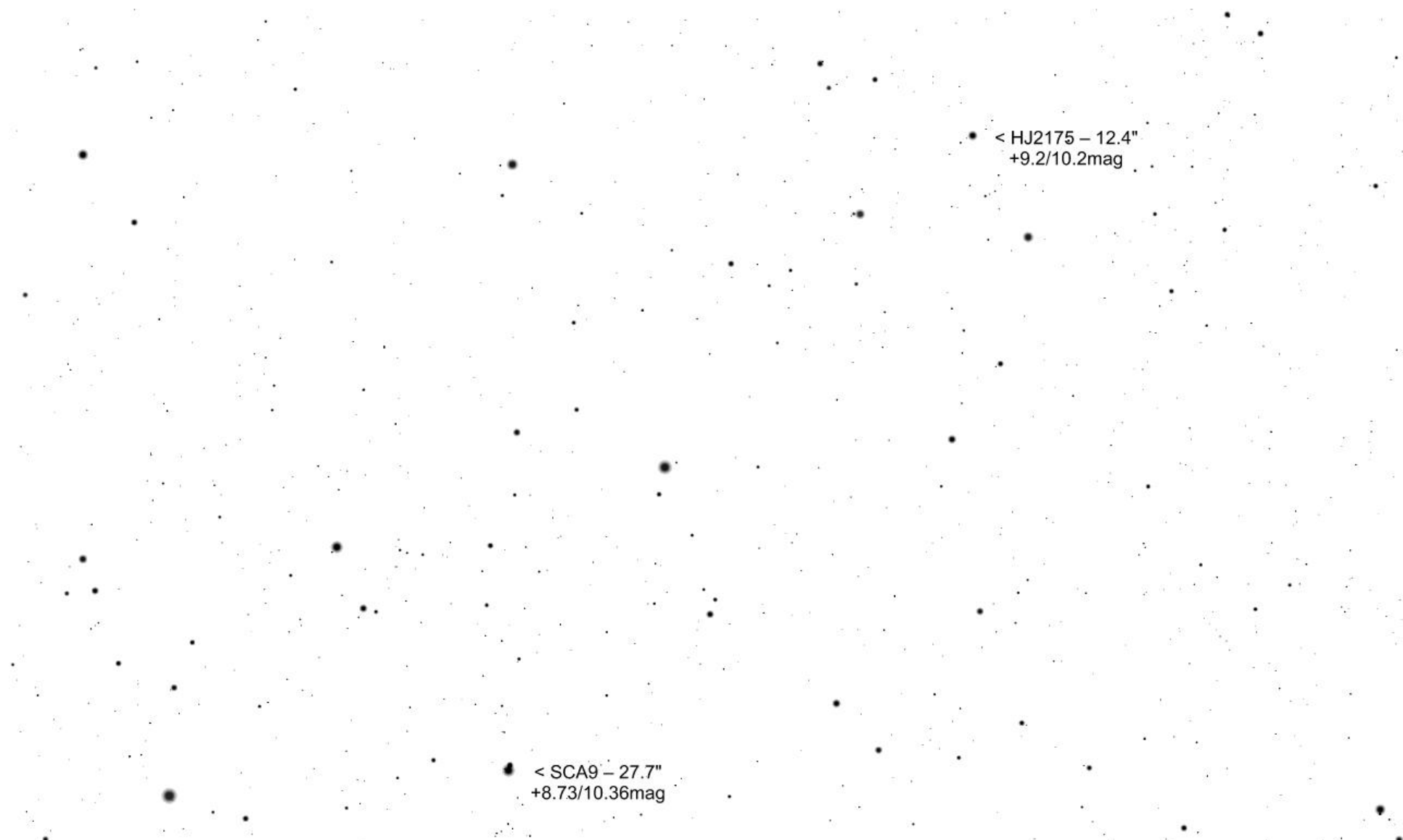
STF386 – 2.6"DS
+9.5/9.6mag

STF392 – 26.2"DS
+7.4/10.3mag

STF386 - 2.6"DS
+9.5/9.6mag

HJ2175 - 12.4"DS
+9.2/10.2mag

SCA9 - 27.7"DS
+8.7/10.4mag



SCA9 – 27.7"DS
+8.7/10.4mag

A975 – 1.7"DS
+8.4/10.1mag

STF307 (Eta Per)
31.2/66.6"TS
+3.8/8.5/9.9mag

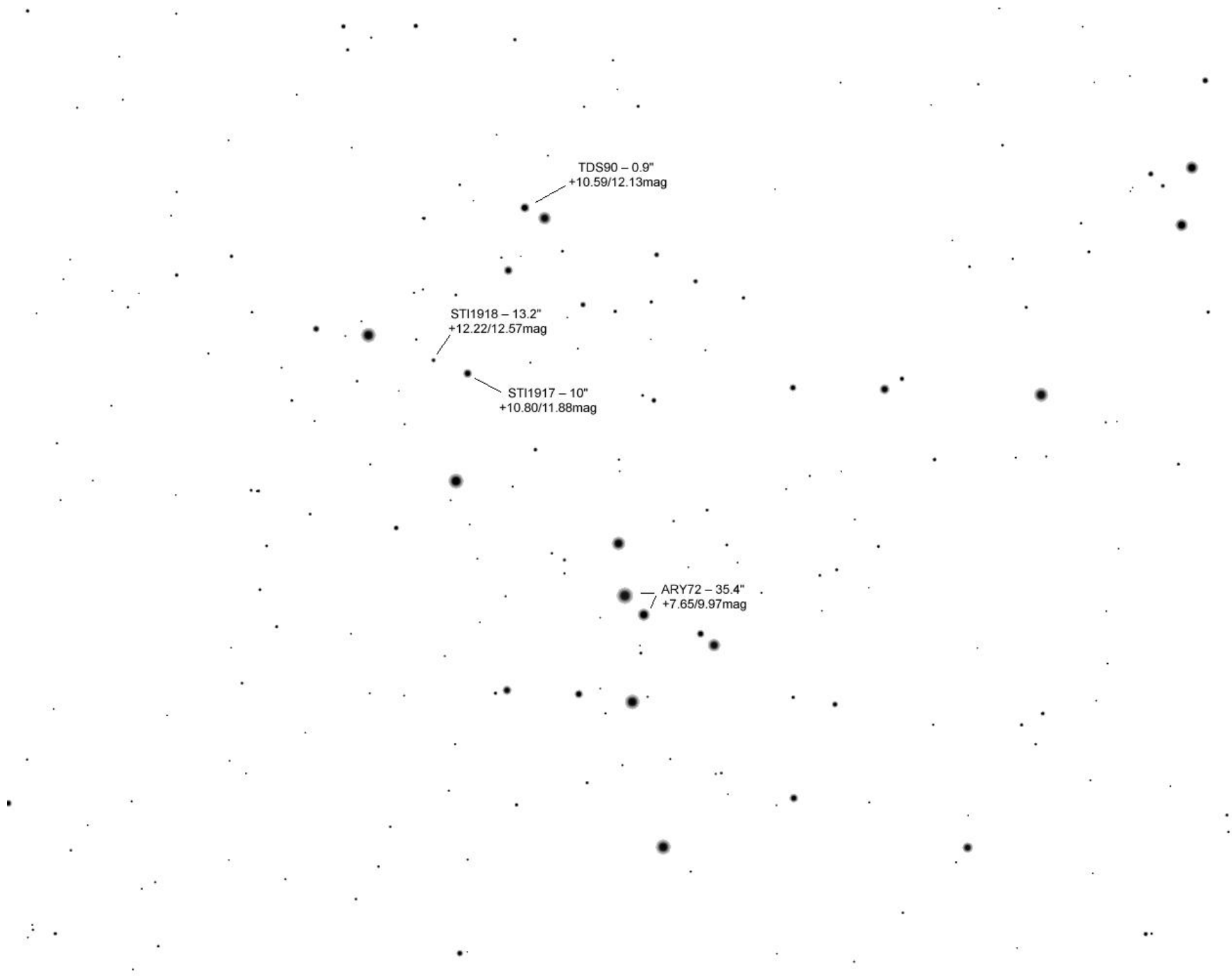
v

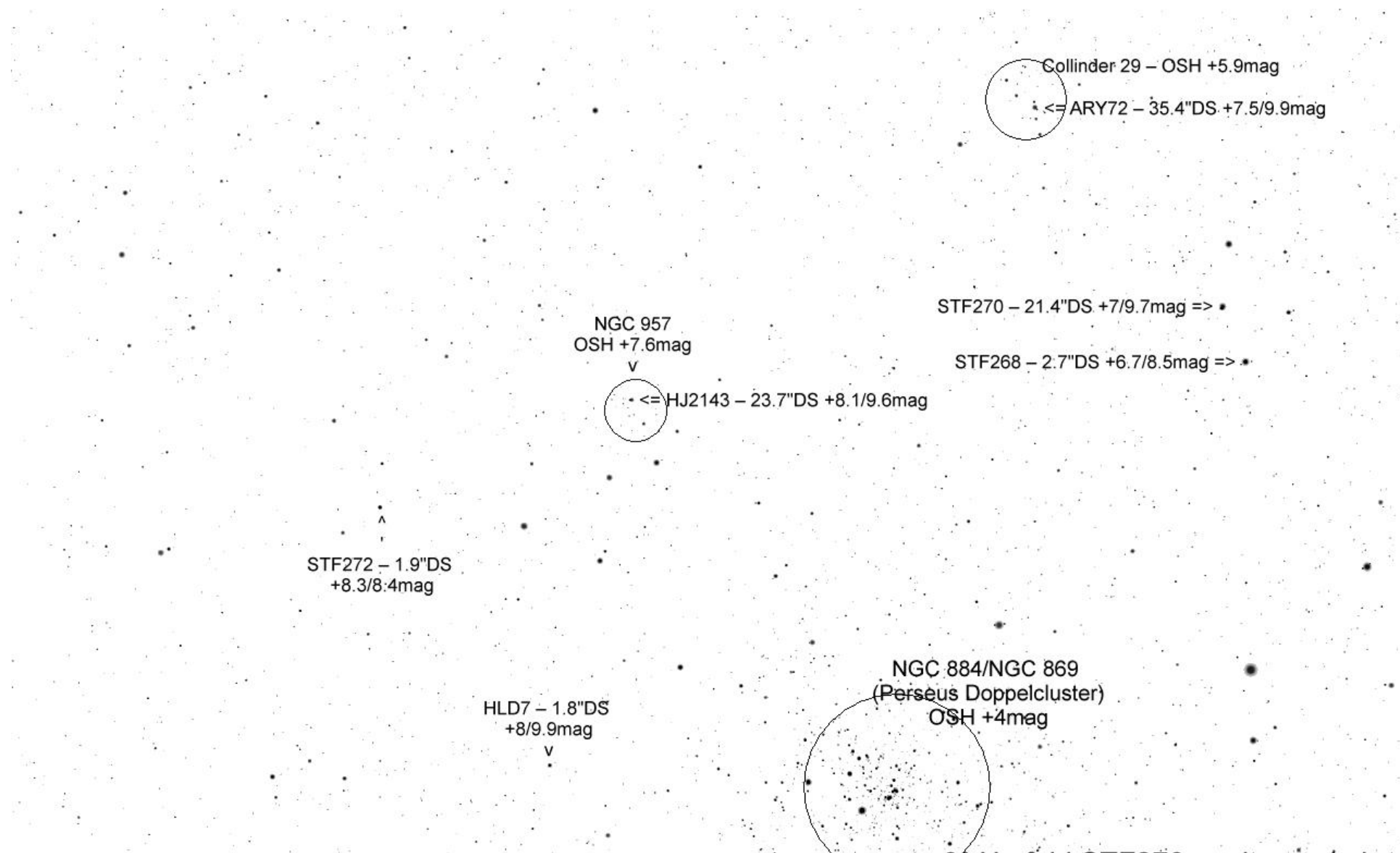
STF307 (Eta Per)
31.2/66.6"TS
+3.8/8.5/9.9mag
v

STF297 – 15.9"DS
+8.6/8.9mag
v

Collinder 29 – OSH +5.9mag

<= ARY72 – 35.4"DS +7.5/9.9mag



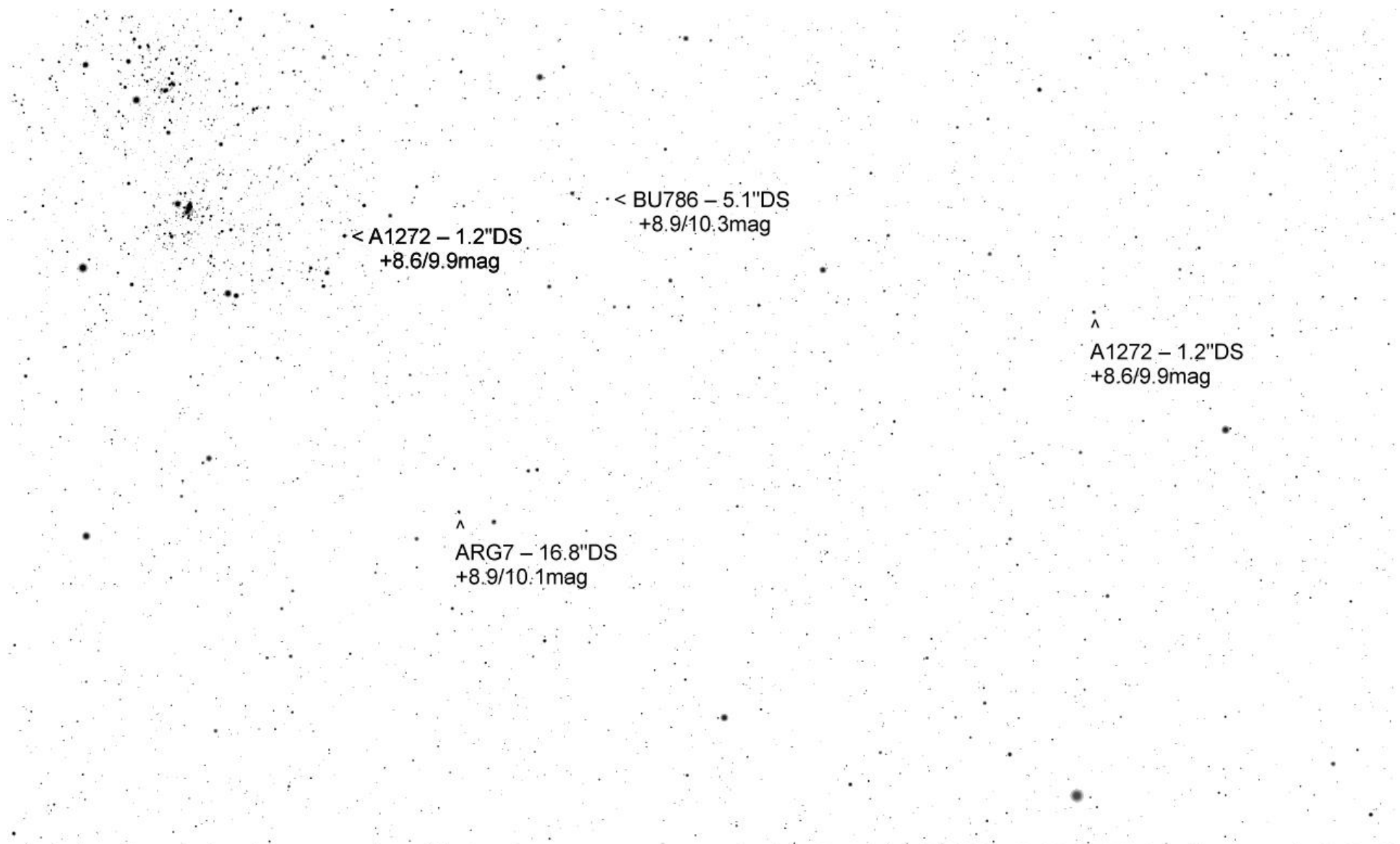


NGC.884/NGC 869
(Perseus Doppelcluster)
OSH +4mag

< BU786 – 5.1"DS
+8.9/10.3mag

< A1272 – 1.2"DS
+8.6/9.9mag

< STF230 – 25"DS
+7.9/9.4mag



• < A1272 – 1.2"DS
+8.6/9.9mag

• < BU786 – 5.1"DS
+8.9/10.3mag

^
A1272 – 1.2"DS
+8.6/9.9mag

^
ARG7 – 16.8"DS
+8.9/10.1mag

^
ARG7 – 16.8"DS
+8.9/10.1mag

HJ2101 – 5.9"DS
+9.4/10.5mag
v

○ NGC 744 – OSH +7.9mag

· < ARG6 – 14.8"DS +8.1/10mag