

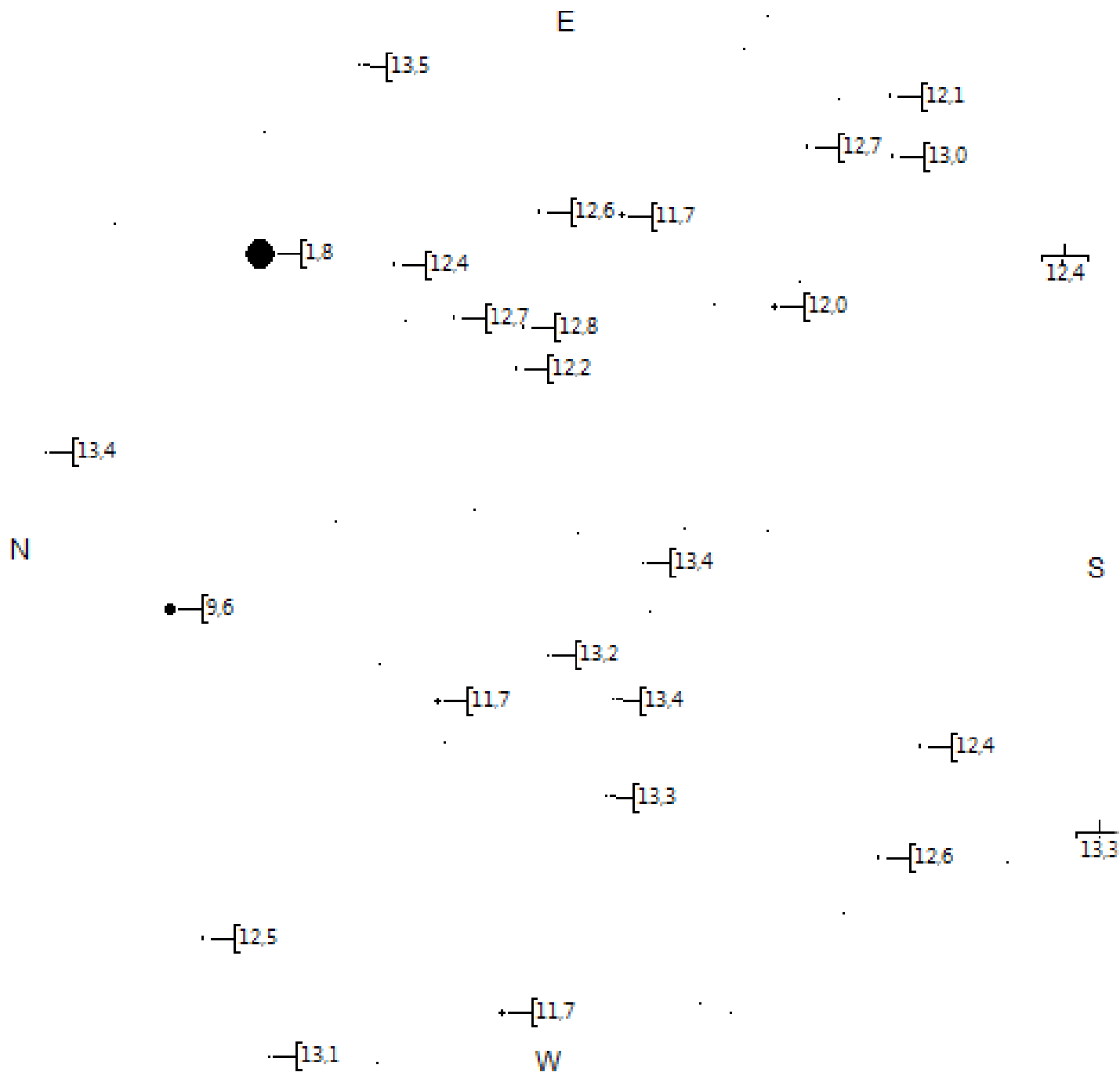
Erde, Wien, 168m

FOV 24°

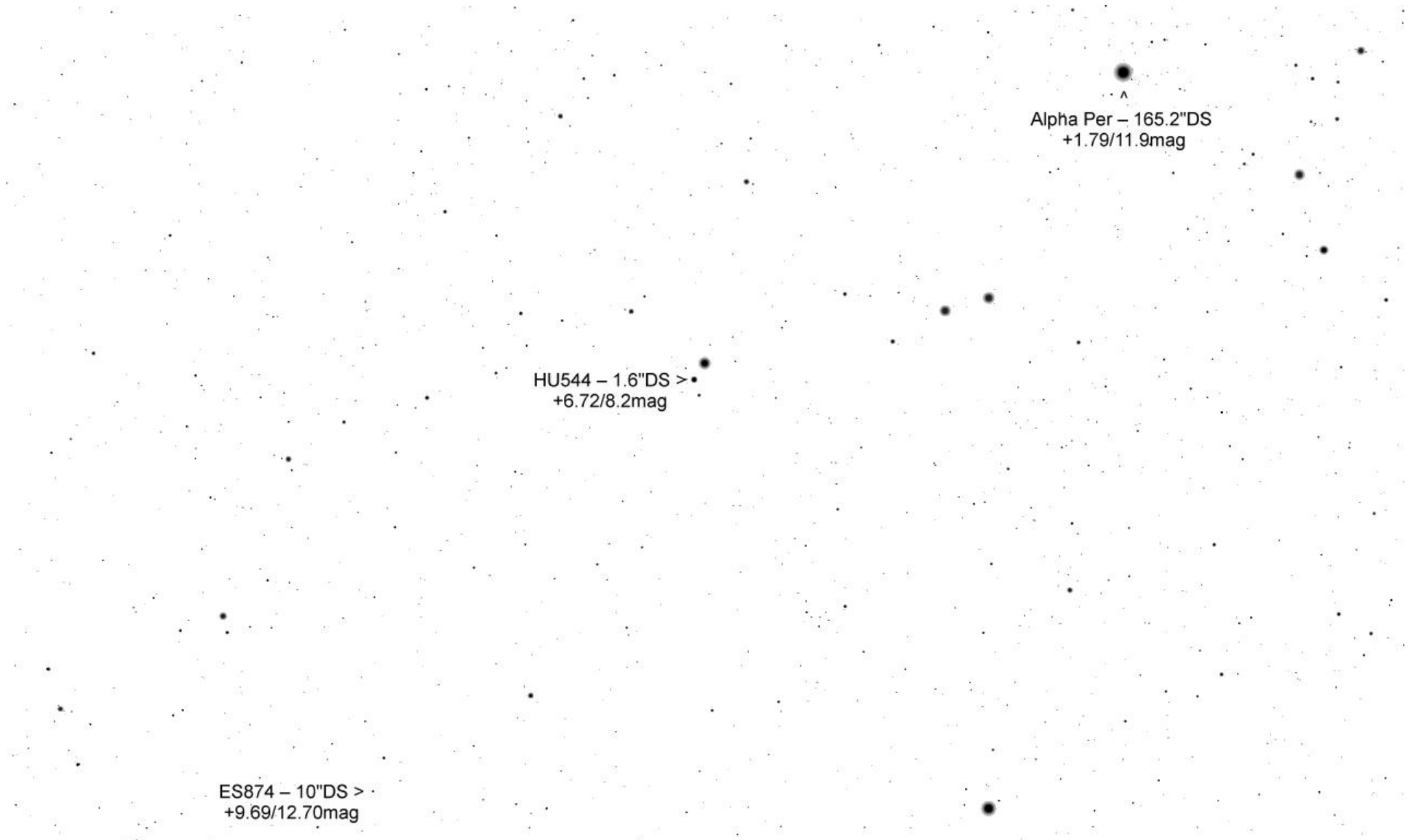
15.7 FPS

2011-01-15 23:05:54

Perseus



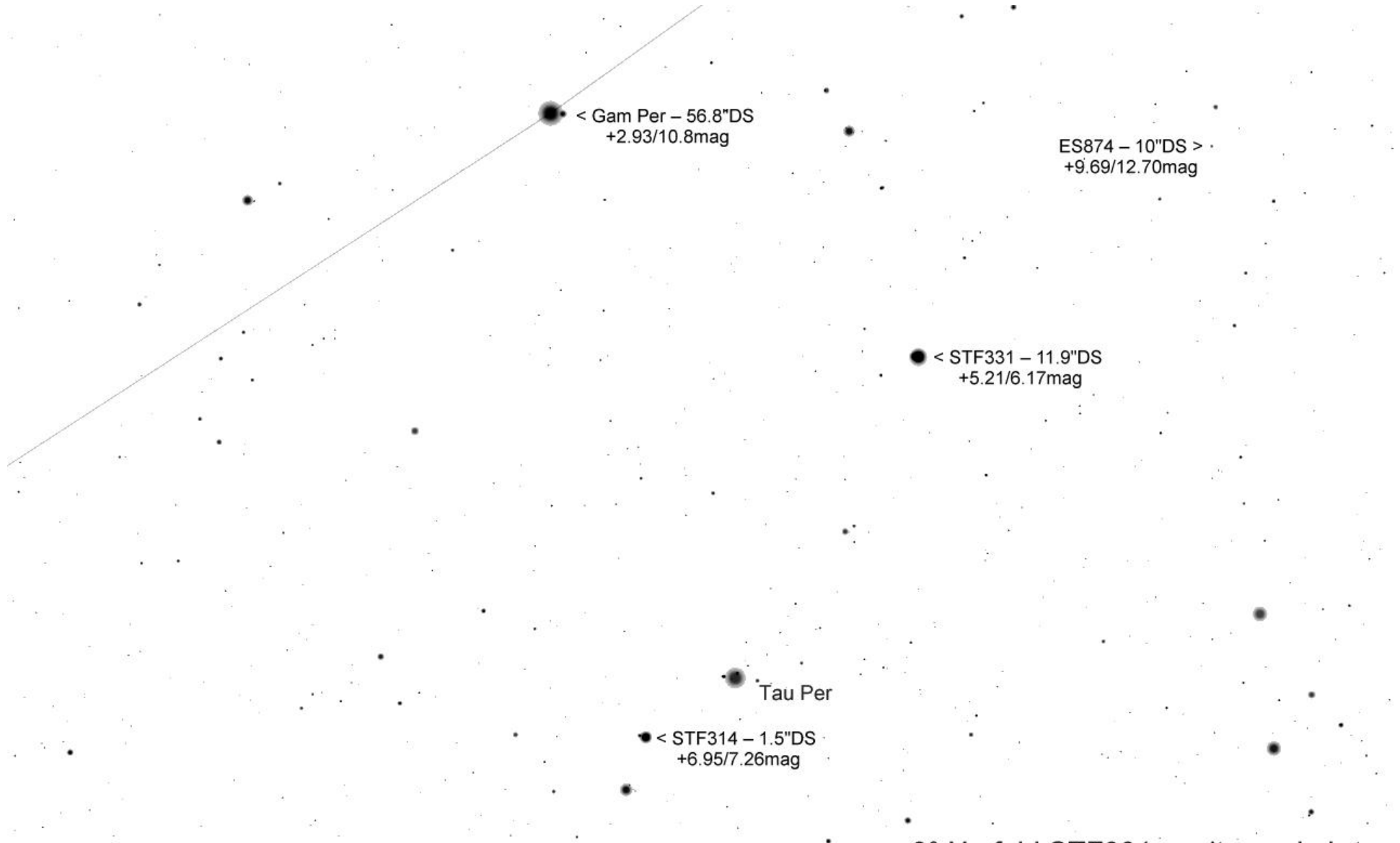
TML Alpha Per per Mitte Jan 15' FoV



Alpha Per – 165.2"DS  
+1.79/11.9mag

HU544 – 1.6"DS >  
+6.72/8.2mag

ES874 – 10"DS >  
+9.69/12.70mag



Erde, Wien, 168m

FOV 2.55° 24 FPS

2011-01-26 21:21:06

3° Umfeld STF331 - seitenverkehrt

Eta Per

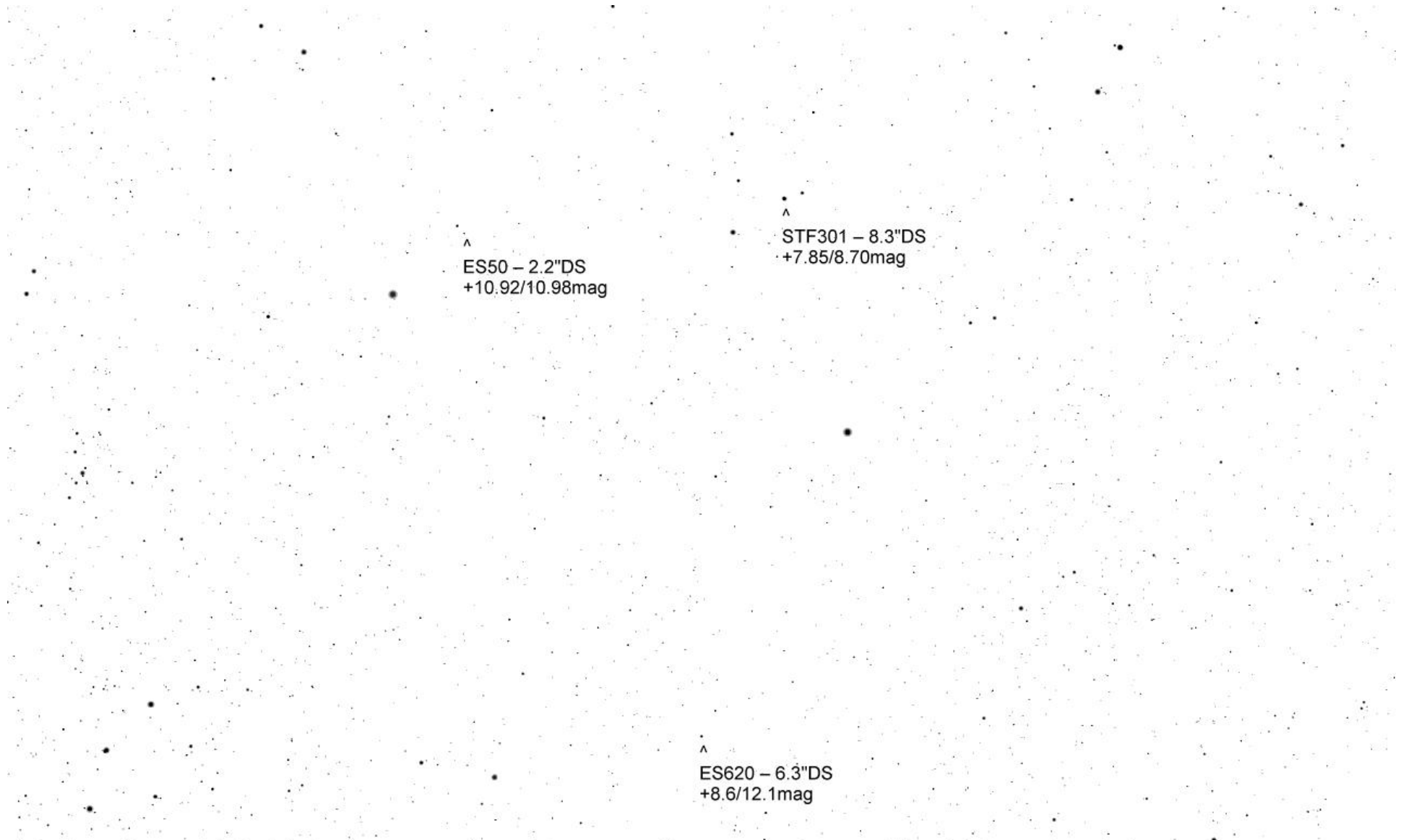
STF307 28.3/66.6"TS  
+3.8/8.5/9.9mag

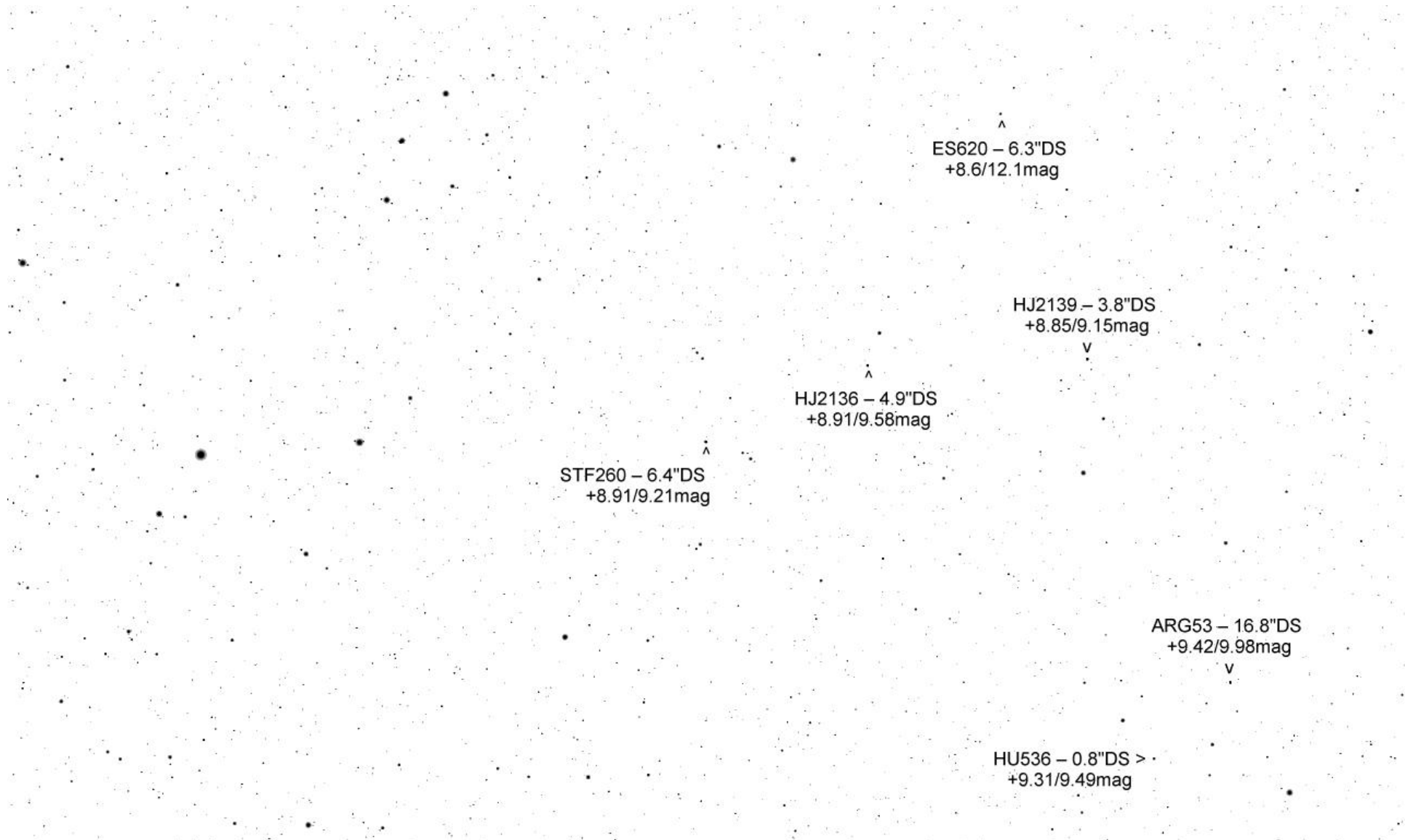
Tau Per

< STF314 - 1.5"DS  
+6.95/7.26mag

ES50 2.2"DS  
+10.9/11mag

^  
STF301 - 8.3"DS  
+7.85/8.70mag





HU536 – 0.8"DS  
+9.31/9.49mag

STF236 – 1.4"DS  
+9.40/10mag

HJ2104 – 30.6"DS  
+9.35/9.61mag

STF213 – 1.8"DS >  
+9.06/9.50mag

ES6 – 5.5"DS +7.99/10.10mag >

Erde, 'A1 Wien, 168m

FOV 2.95°

25.6 FPS

2014-01-30 22:00:47

3° Umfeld STF213 - seitenverkehrt



< HJ2104 - 30.6"DS +9.35/9.61mag

ES6 - 5.5"DS  
+7.99/10.10mag

HJ2085 - 9.4"DS  
+10.07/10.60mag

HJ2069 - 17.8"DS +9.24/9.90mag >

^  
HJ2069 – 17.8"DS  
+9.24/9.90mag

○ M76 - PN  
+12mag

COU2555 – 2"DS >  
+10.62/10.68mag

COU2258 – 0.9"DS >  
+10.16mag/10.20mag

^  
ES759 – 10.4"DS  
+9.23/9.60mag

