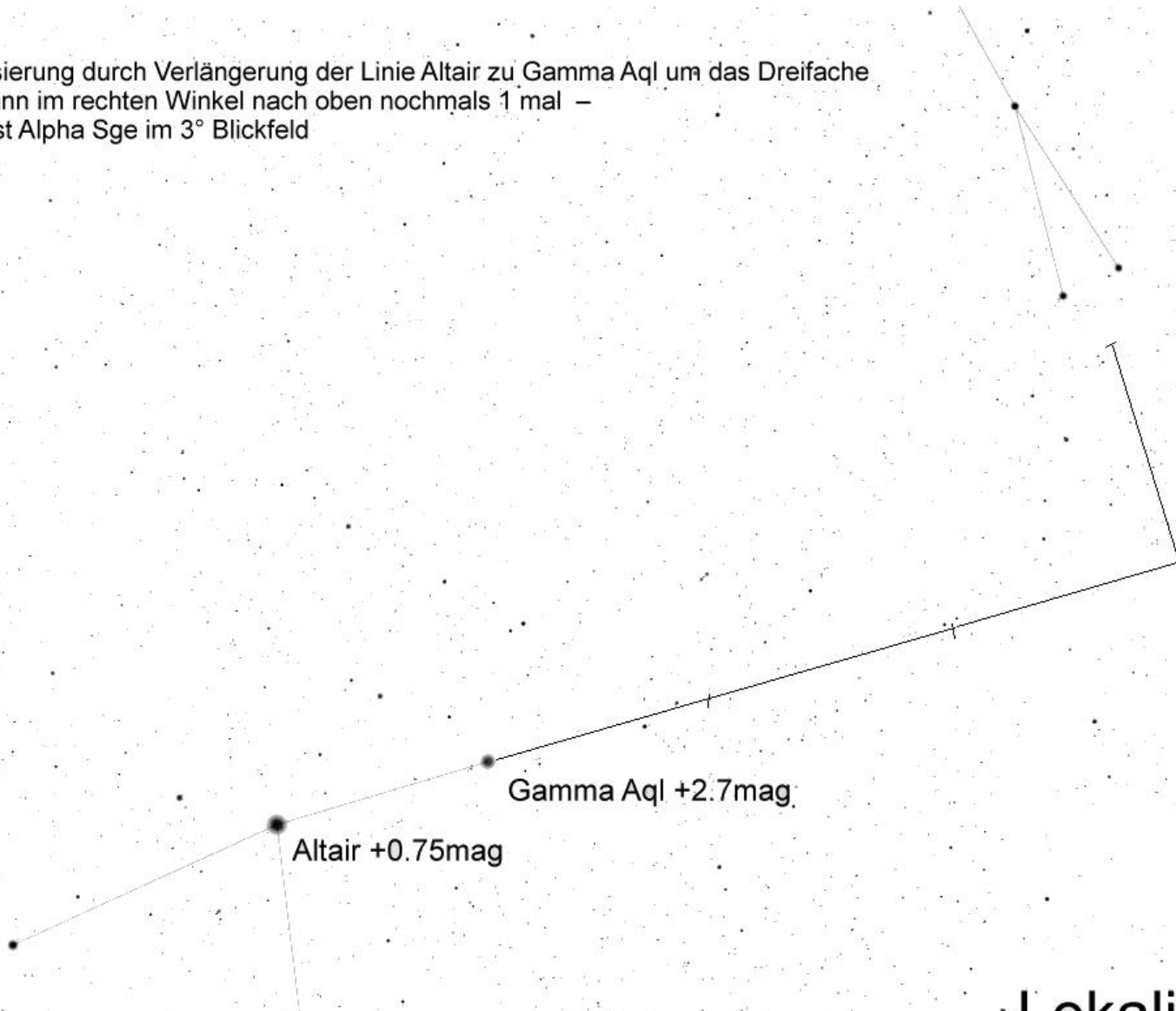
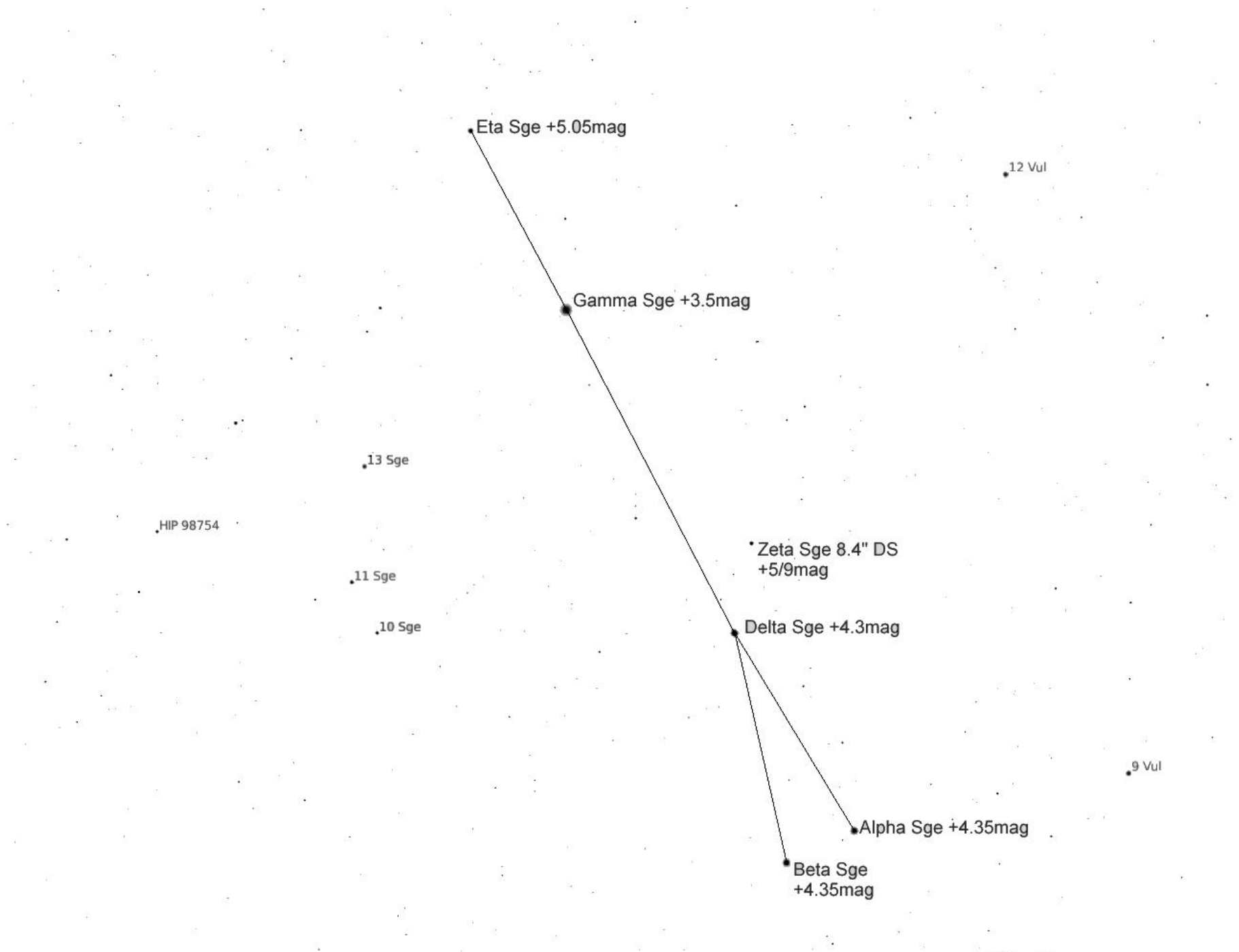
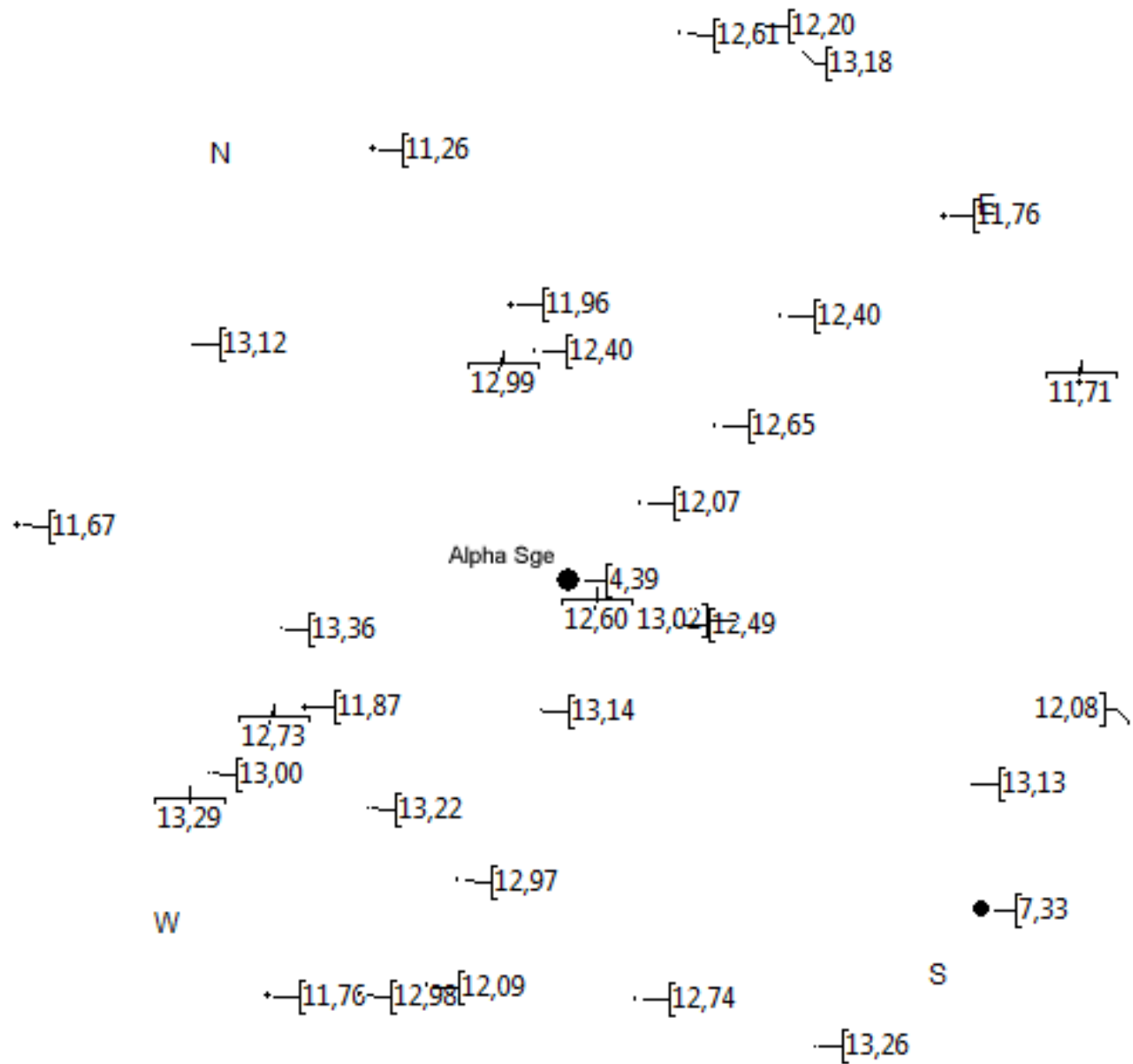


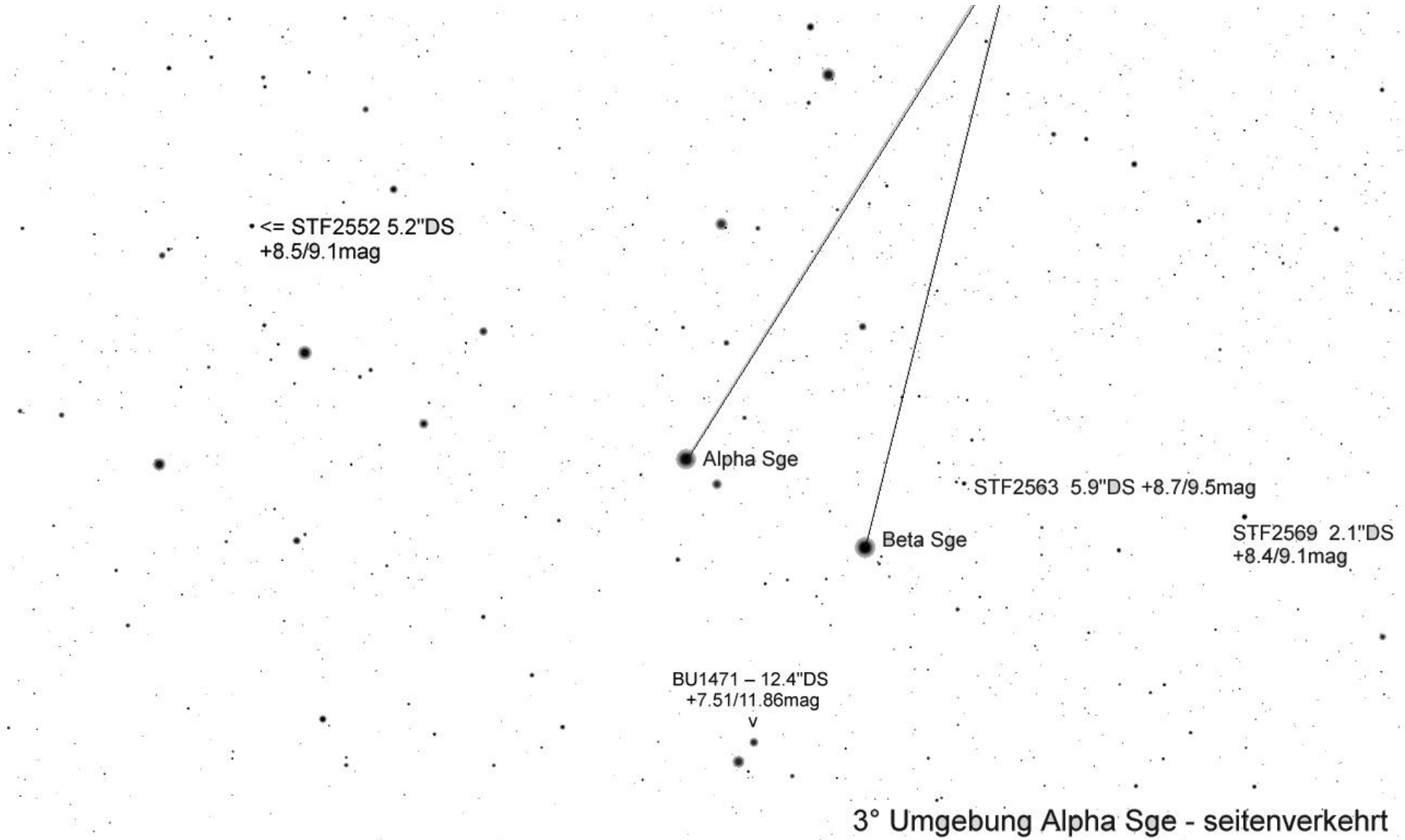
Lokalisierung durch Verlängerung der Linie Altair zu Gamma Aql um das Dreifache und dann im rechten Winkel nach oben nochmals 1 mal – dann ist Alpha Sge im 3° Blickfeld







TML Alpha Sge per Mitte September 15' FoV



3° Umgebung Alpha Sge - seitenverkehrt

Alpha Sge +4.35mag

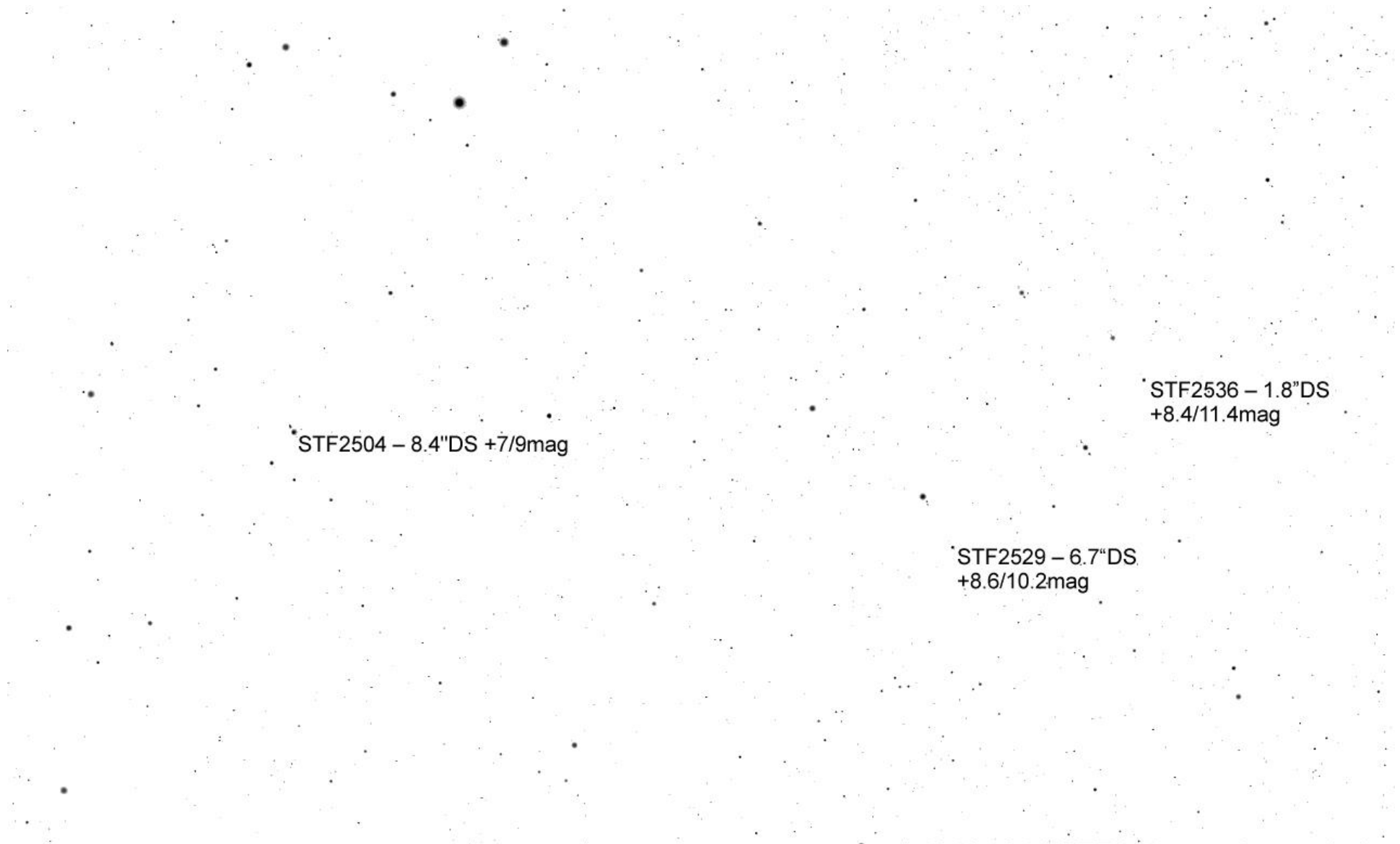
Beta Sge
+4.35mag

BU1471 – 12.4"DS
+7.51/11.86mag
v

STF2536 – 1.8"DS +8.4/11.4mag

HN84
HIP 96688 – 28.2"DS
+6.9/9.5mag

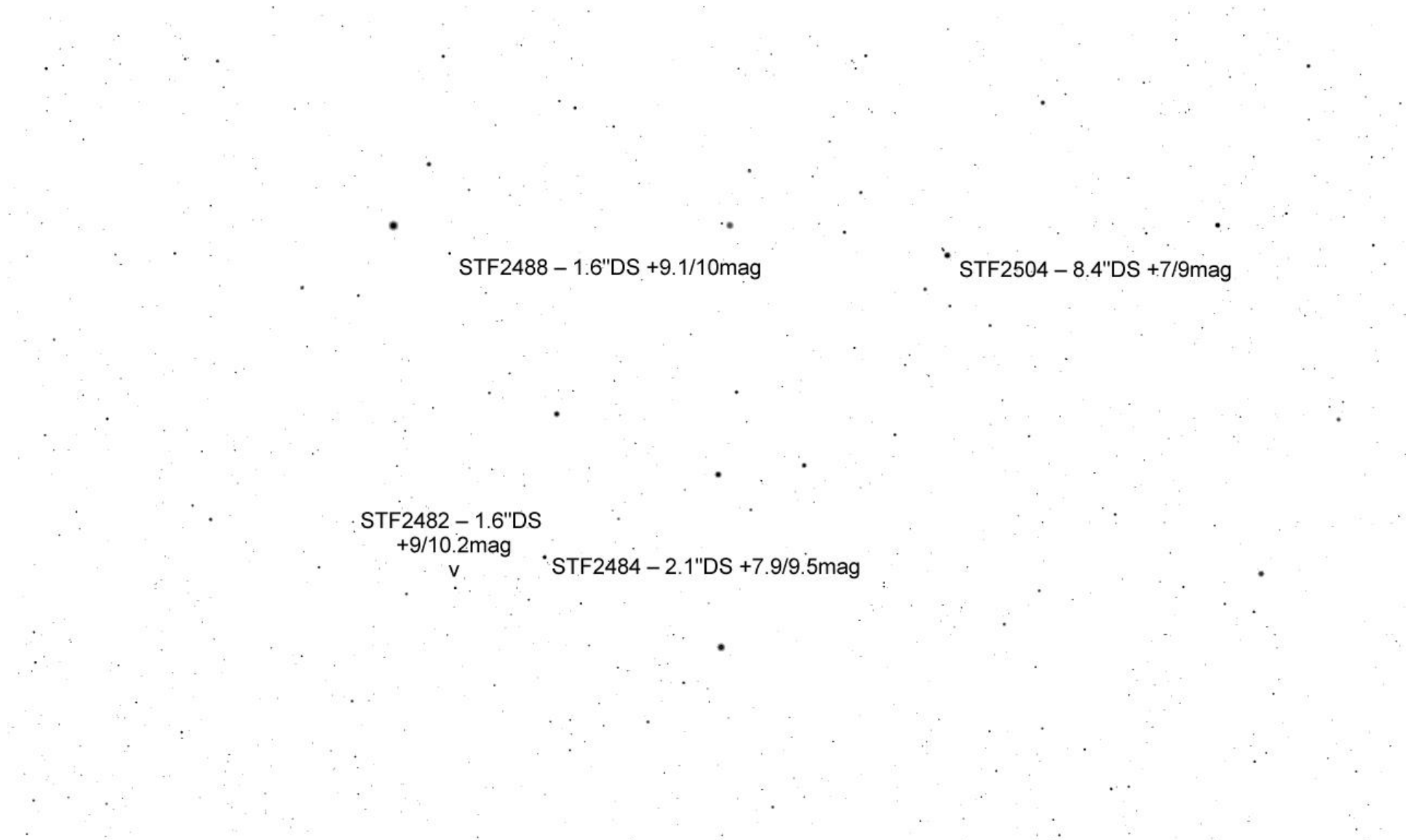
STF2529 – 6.7"DS +8.6/10.2mag



STF2504 – 8.4"DS +7/9mag

STF2536 – 1.8"DS
+8.4/11.4mag

STF2529 – 6.7"DS
+8.6/10.2mag



STF2488 – 1.6"DS +9.1/10mag

STF2504 – 8.4"DS +7/9mag

STF2482 – 1.6"DS
+9/10.2mag
v

STF2484 – 2.1"DS +7.9/9.5mag

STF2482 – 1.6"DS
+9/10.2mag
v

STF2484 – 2.1"DS +7.9/9.5mag

<
J1174 – 3.3"DS
+10.6/11.2mag

^
COU422 – 1"DS
+10.68/11.34mag

HO105 – 2.9"DS
+8.9/9.9mag