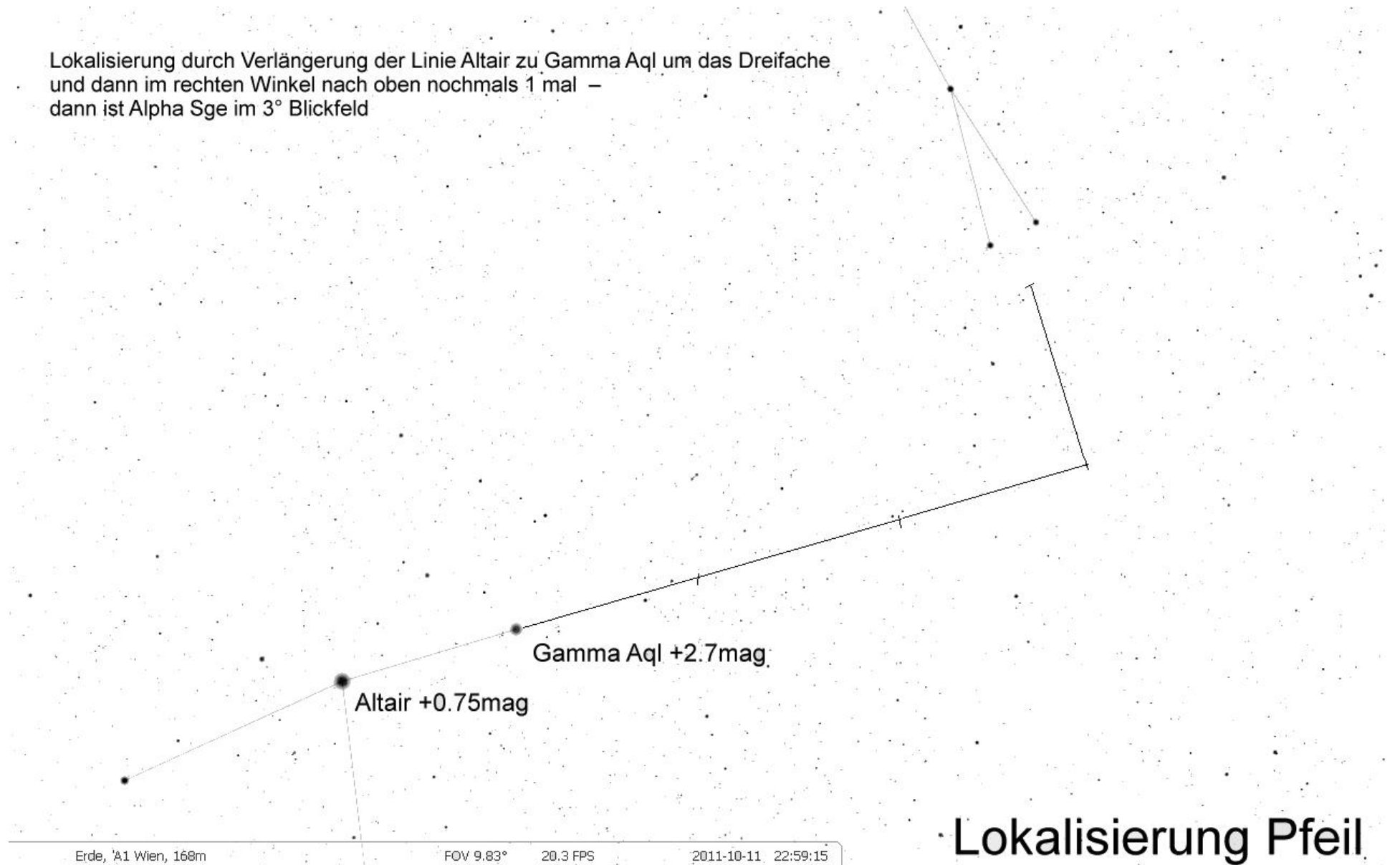
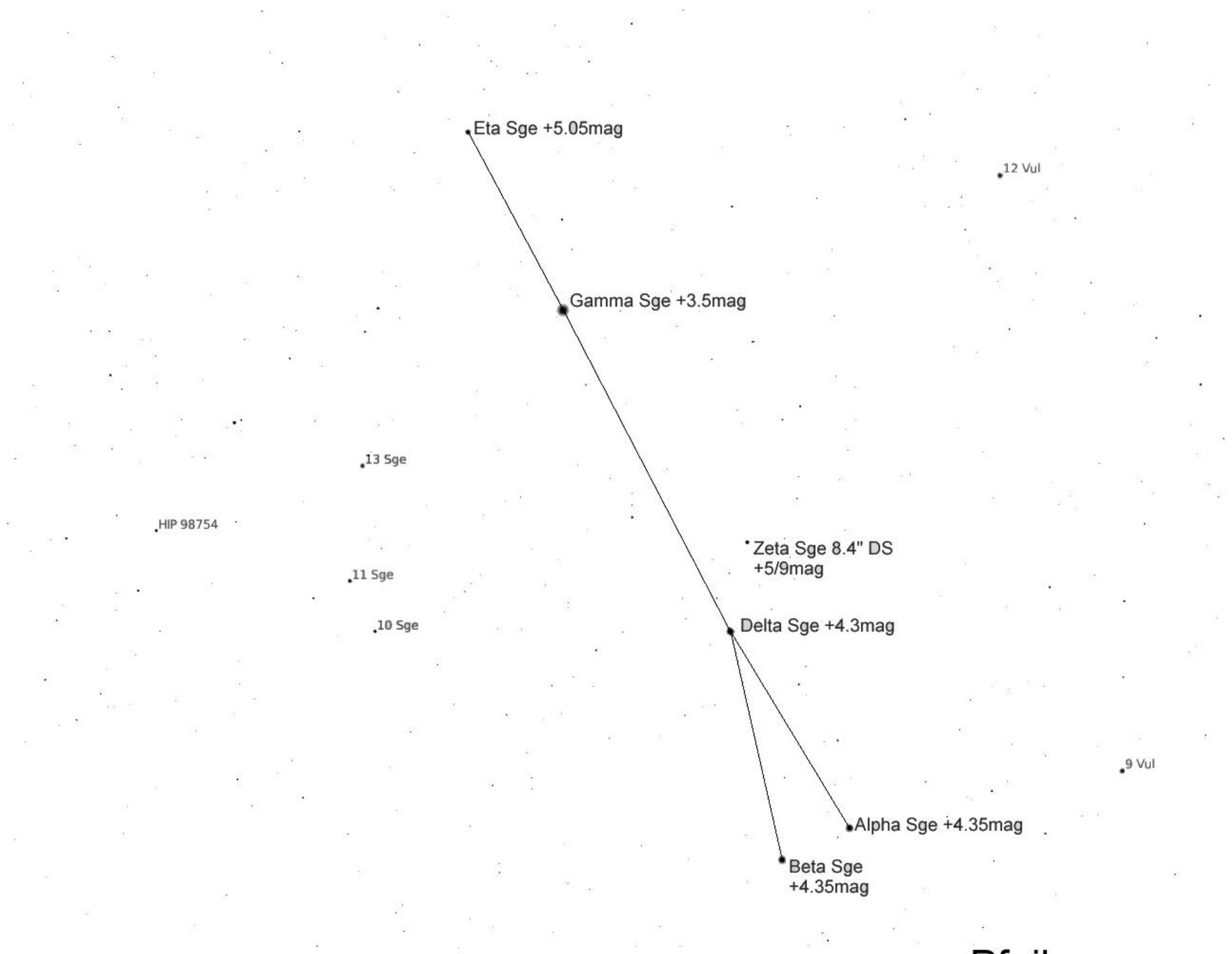
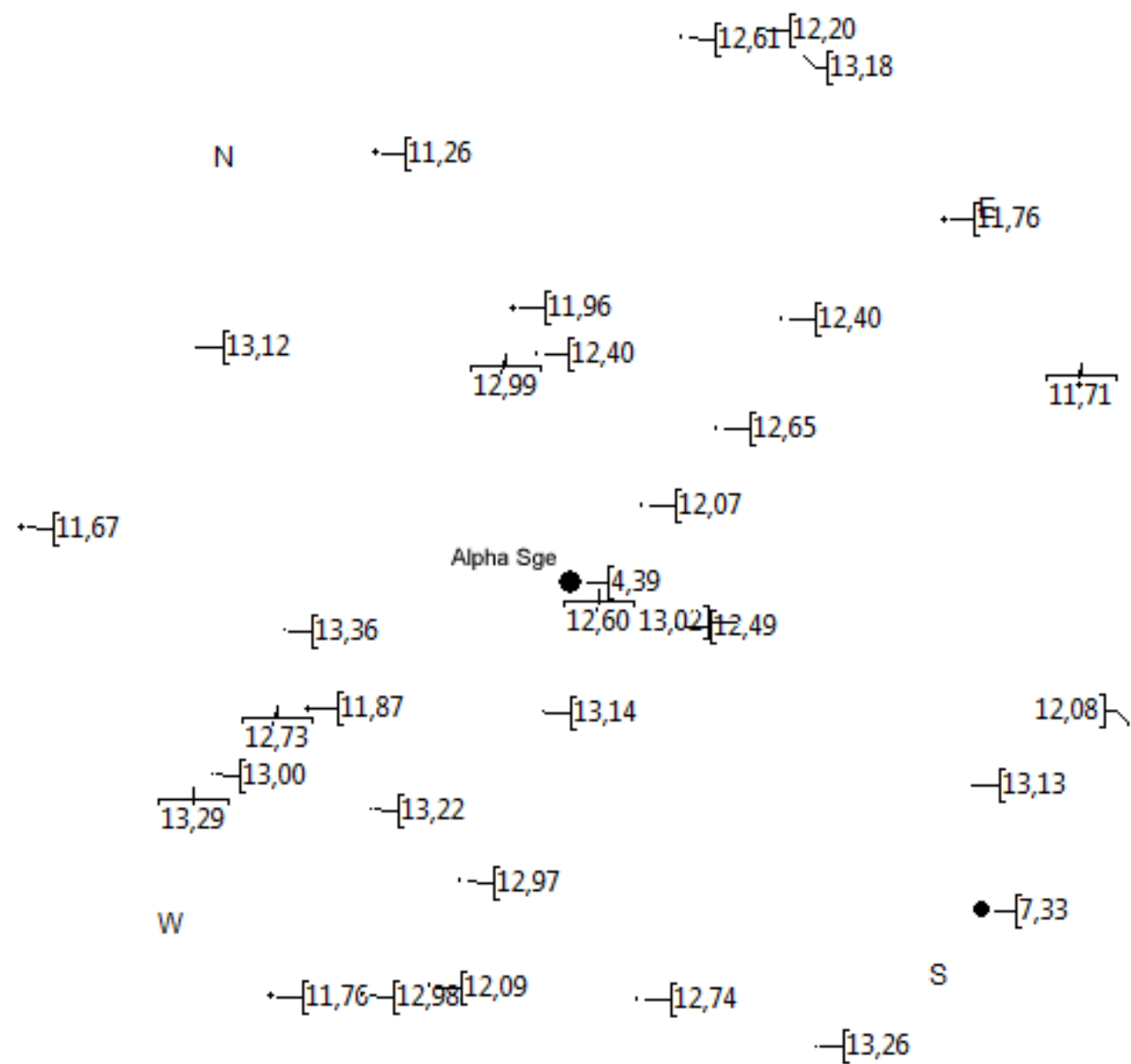


Lokalisierung durch Verlängerung der Linie Altair zu Gamma Aql um das Dreifache
und dann im rechten Winkel nach oben nochmals 1 mal –
dann ist Alpha Sge im 3° Blickfeld

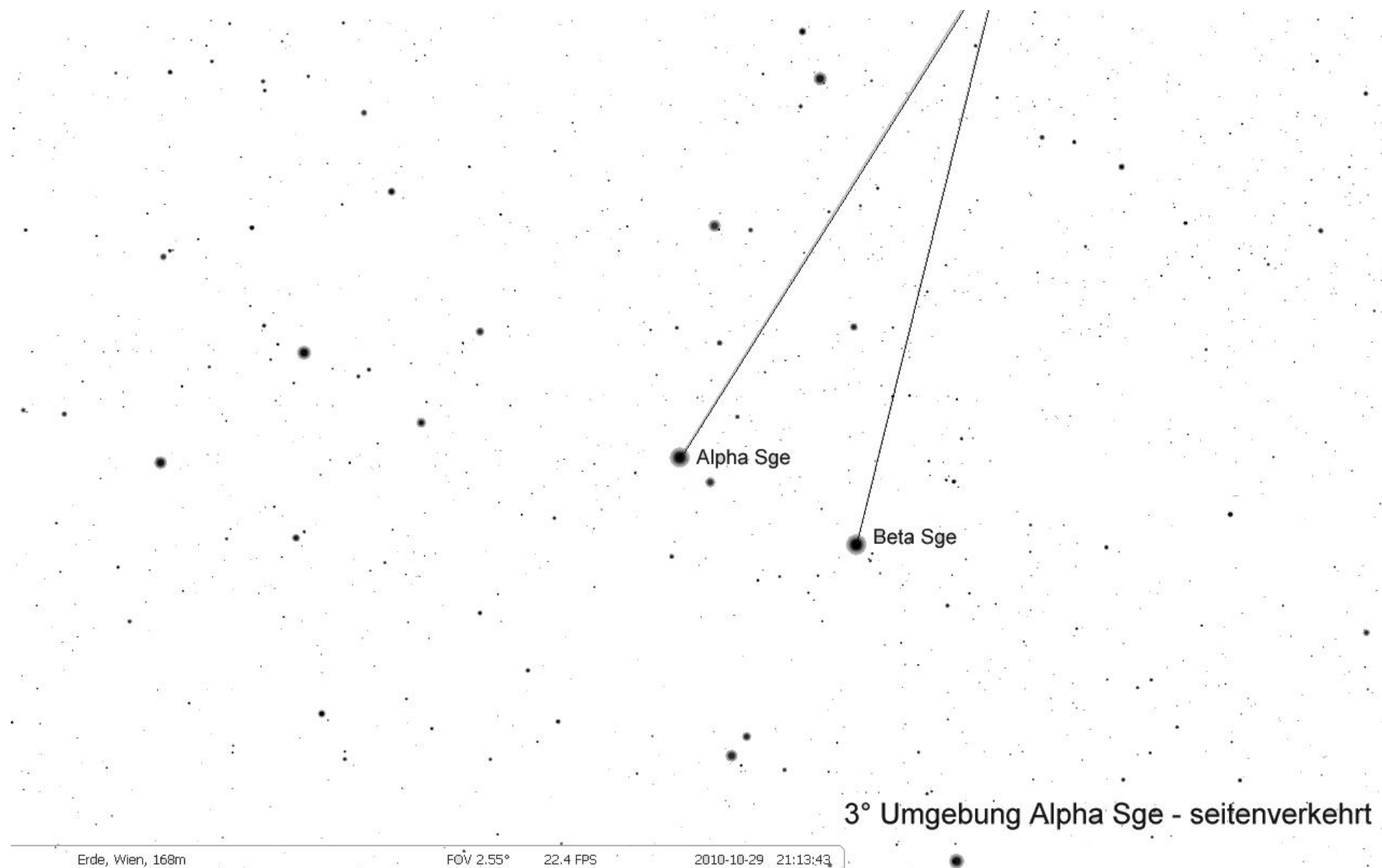


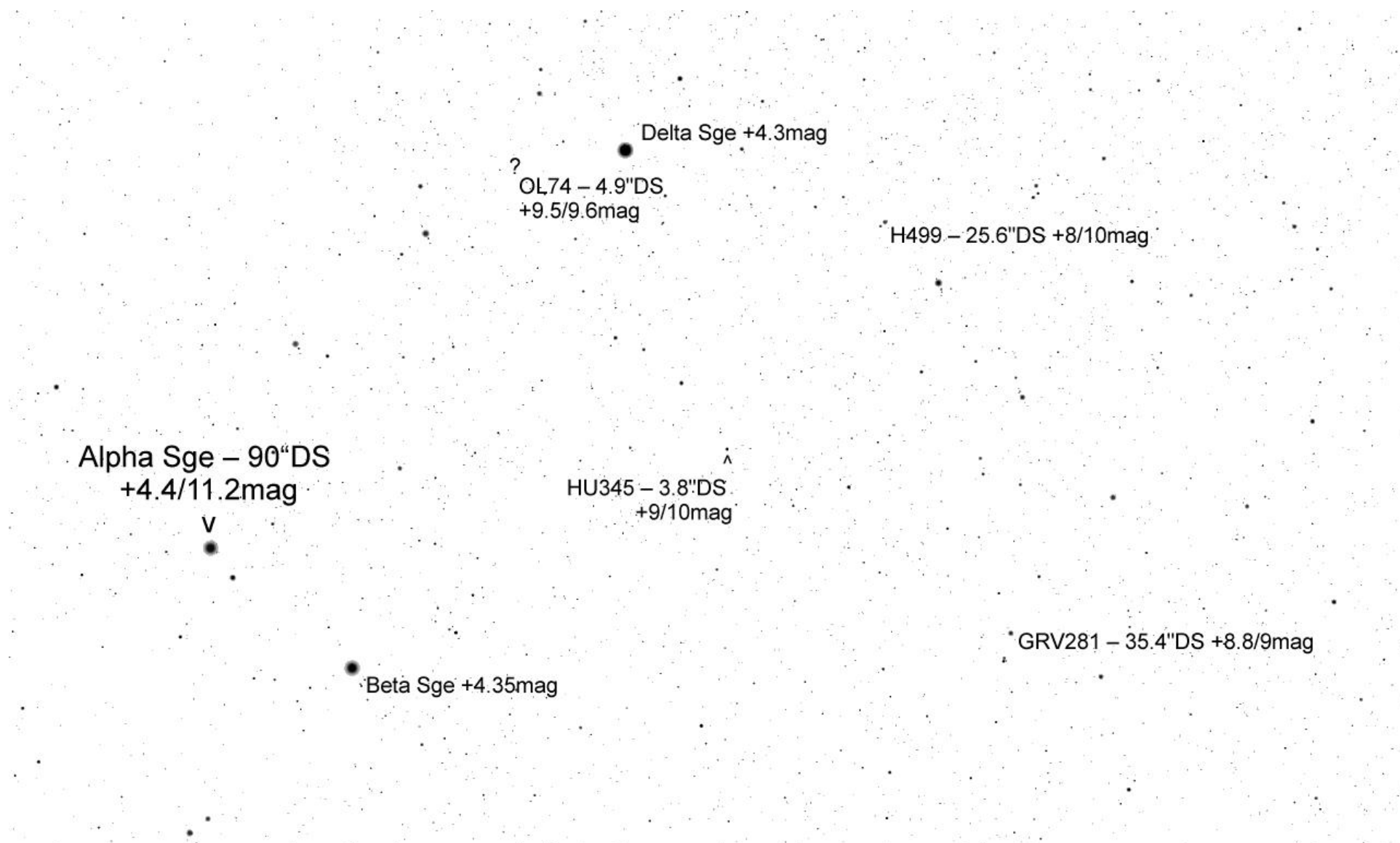
Lokalisierung Pfeil

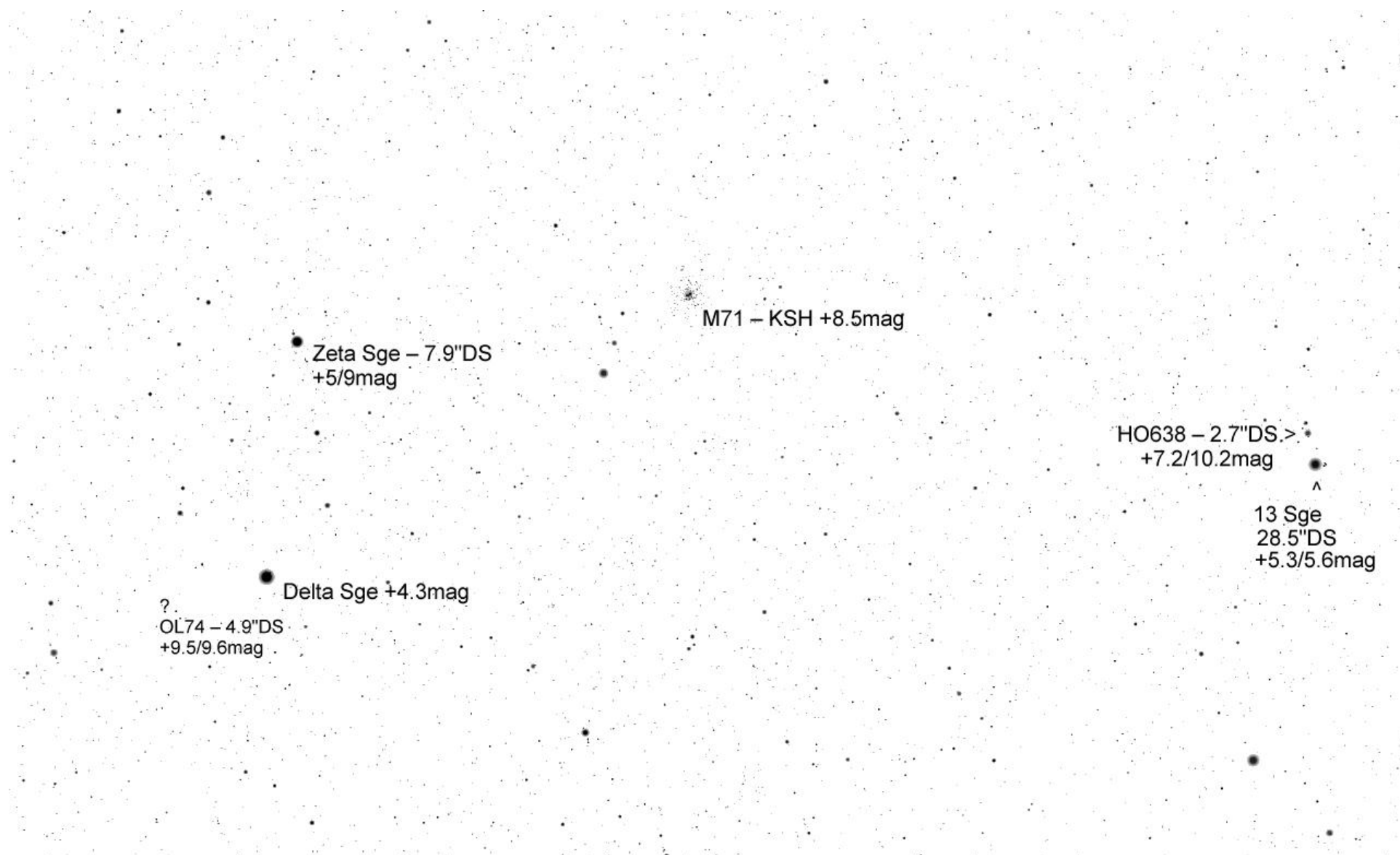




TML Alpha Sge per Mitte September 15' FoV







13 Sge – 28.5"DS
+5.3/5.6mag

STF2634 – 4.1"DS
+7.8/9.9mag

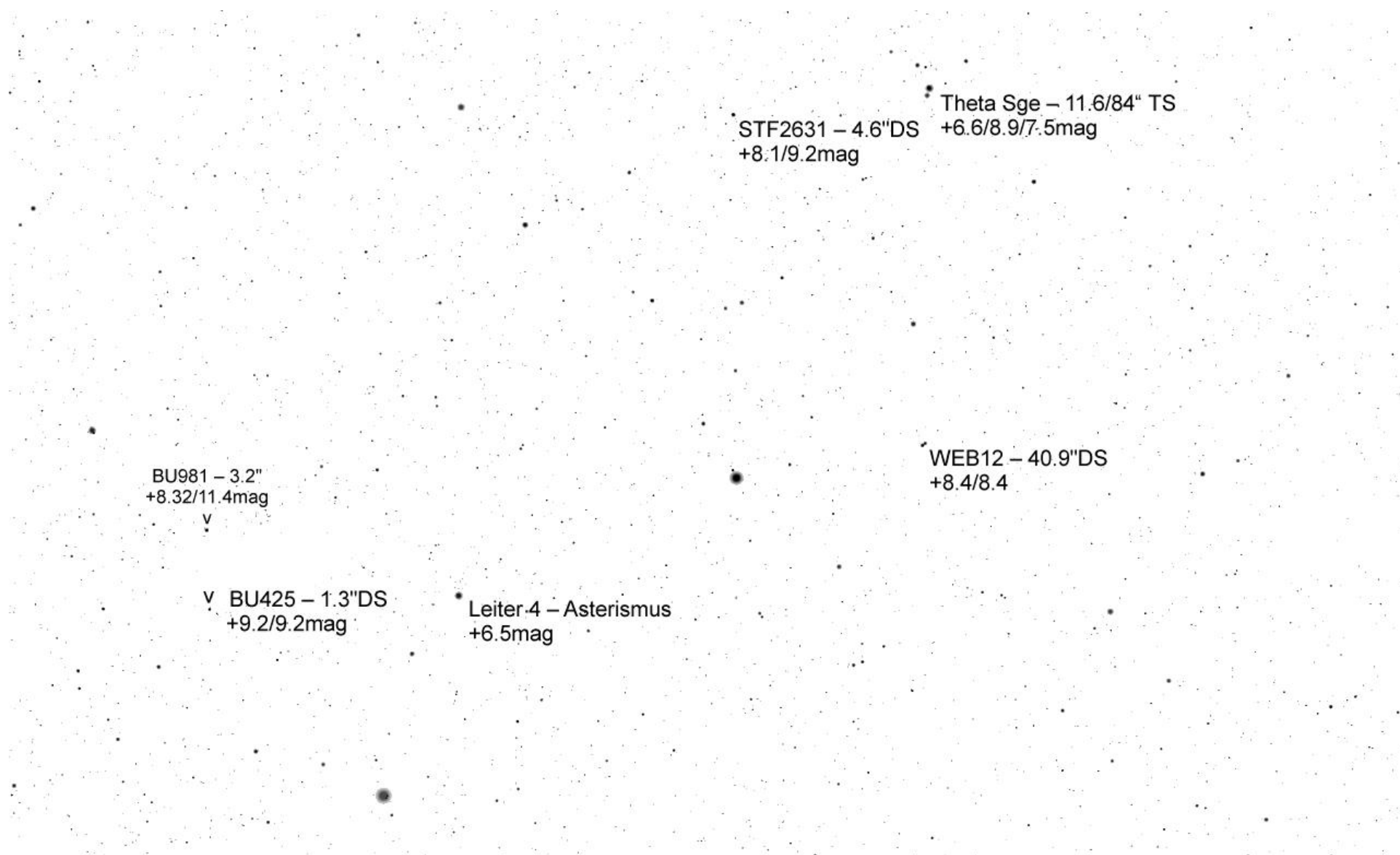
STF2634 – 4.1"DS
+7.8/9.9mag

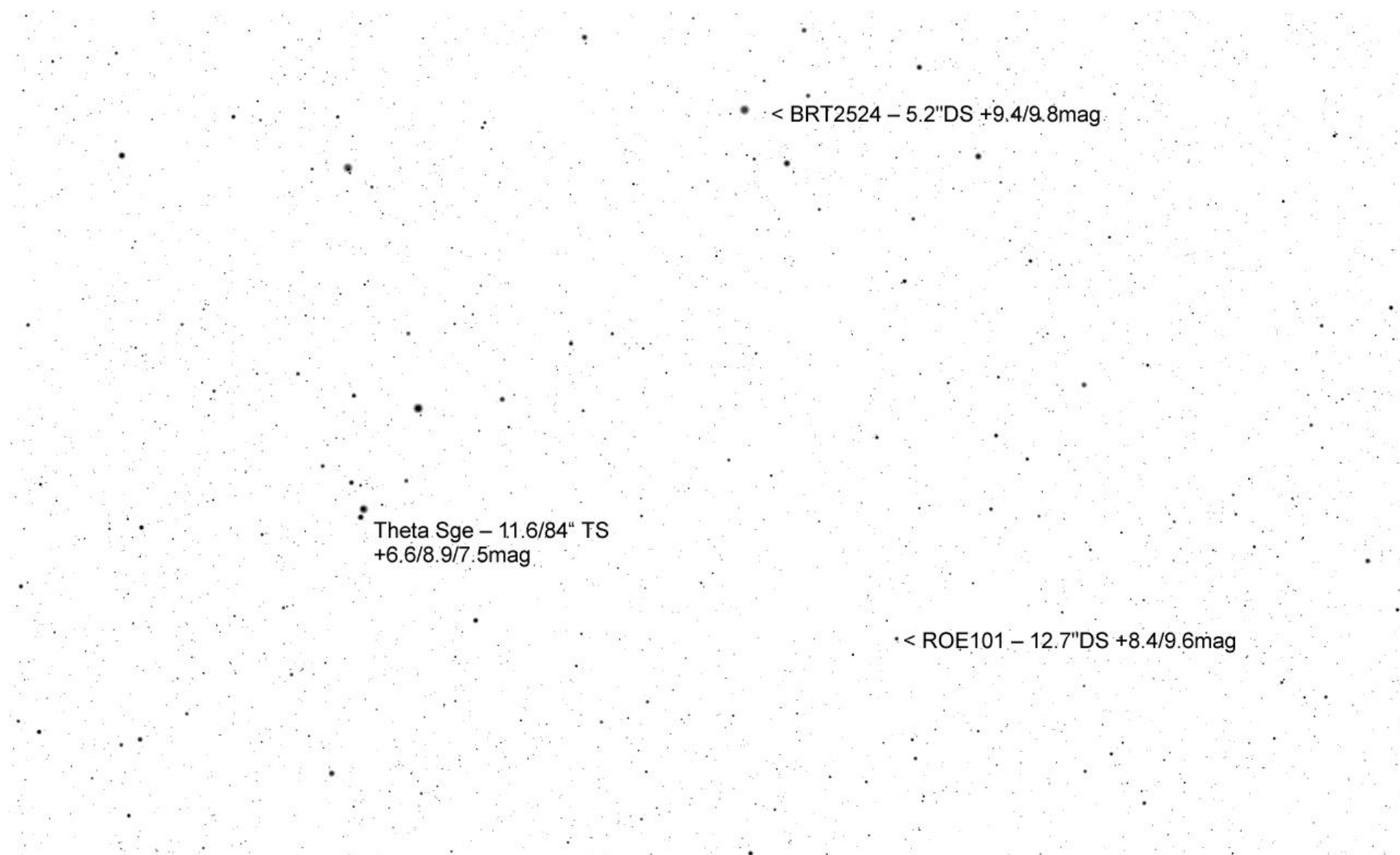
STF2651 – 1"DS
+8.4/8.4mag

Leiter 4 – Asterismus +6.5mag

^
J506 – 3.4"DS
+9.5/9.6mag

STF2634 – 4.1"DS
+7.8/9.9mag





< BRT2524 – 5.2"DS +9.4/9.8mag

Theta Sge – 11.6/84" TS
+6.6/8.9/7.5mag

< ROE101 – 12.7"DS +8.4/9.6mag