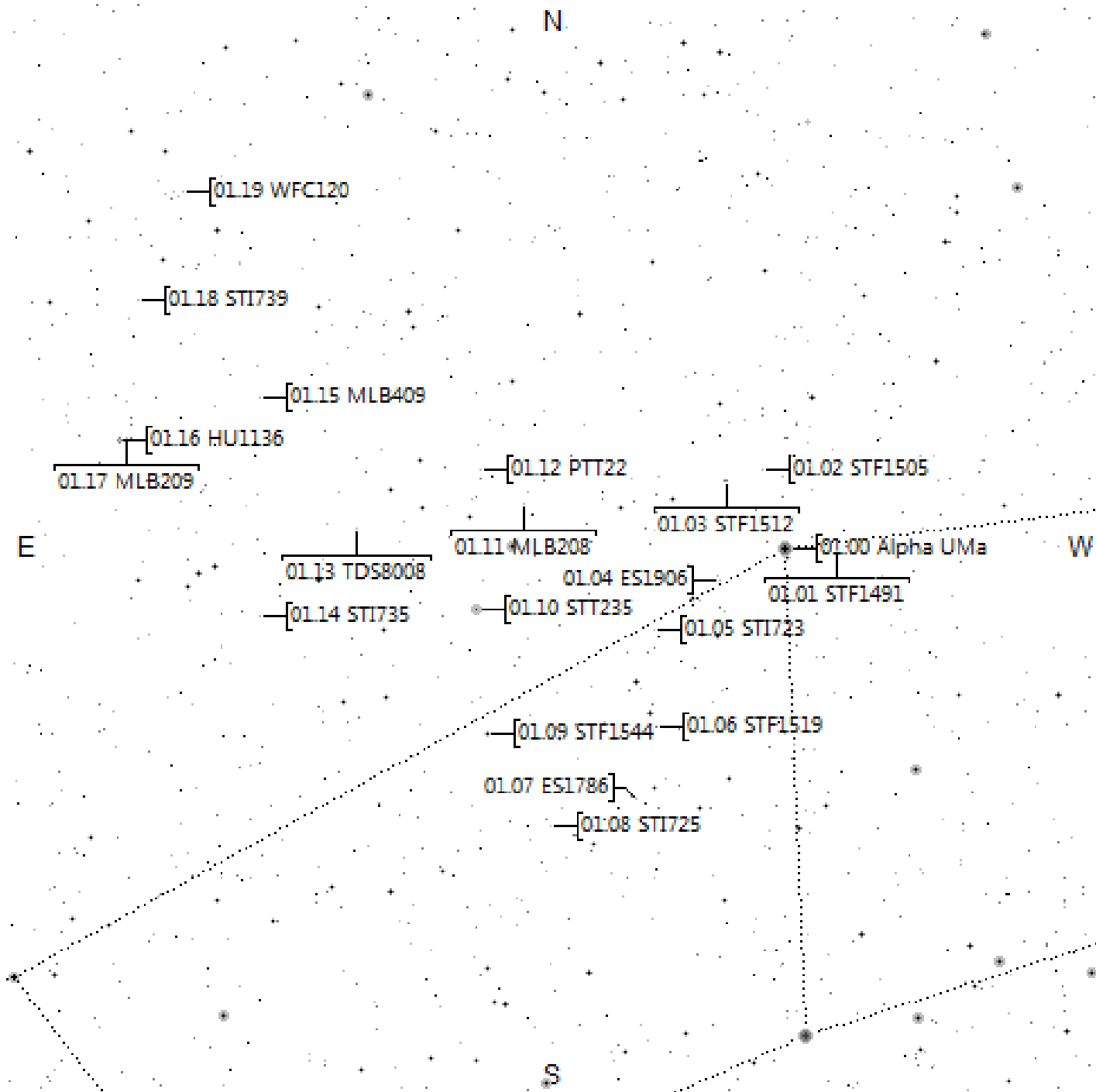
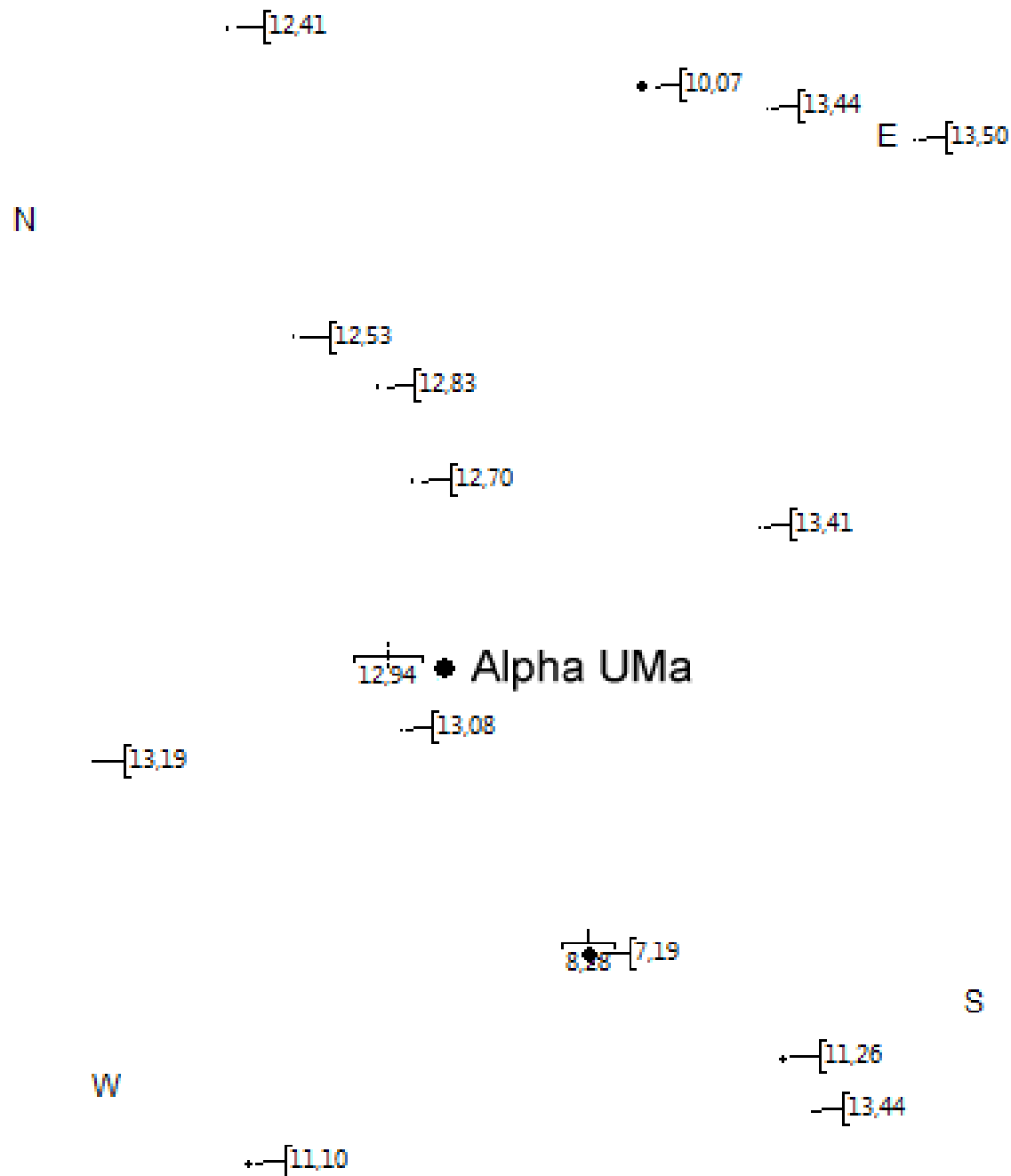
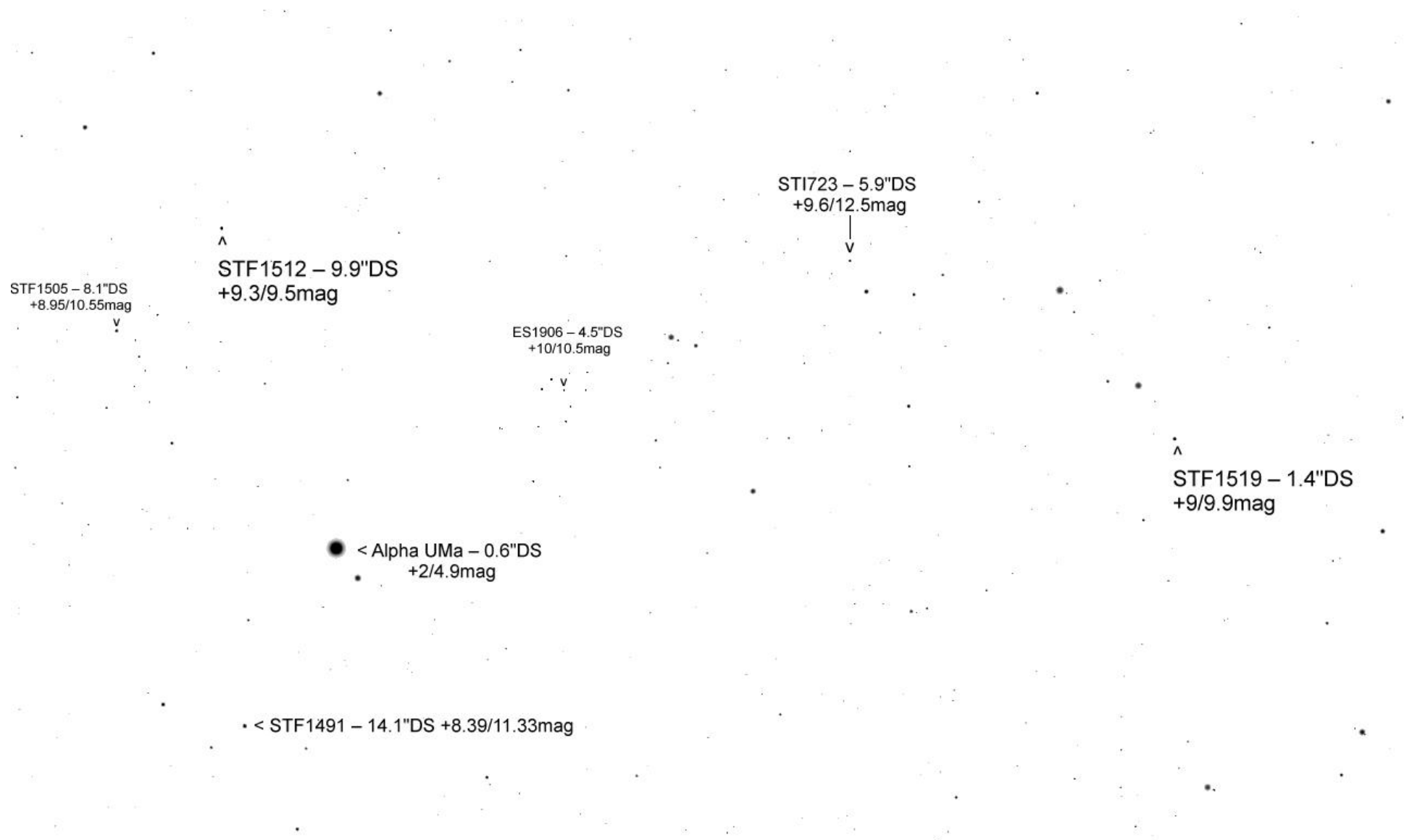


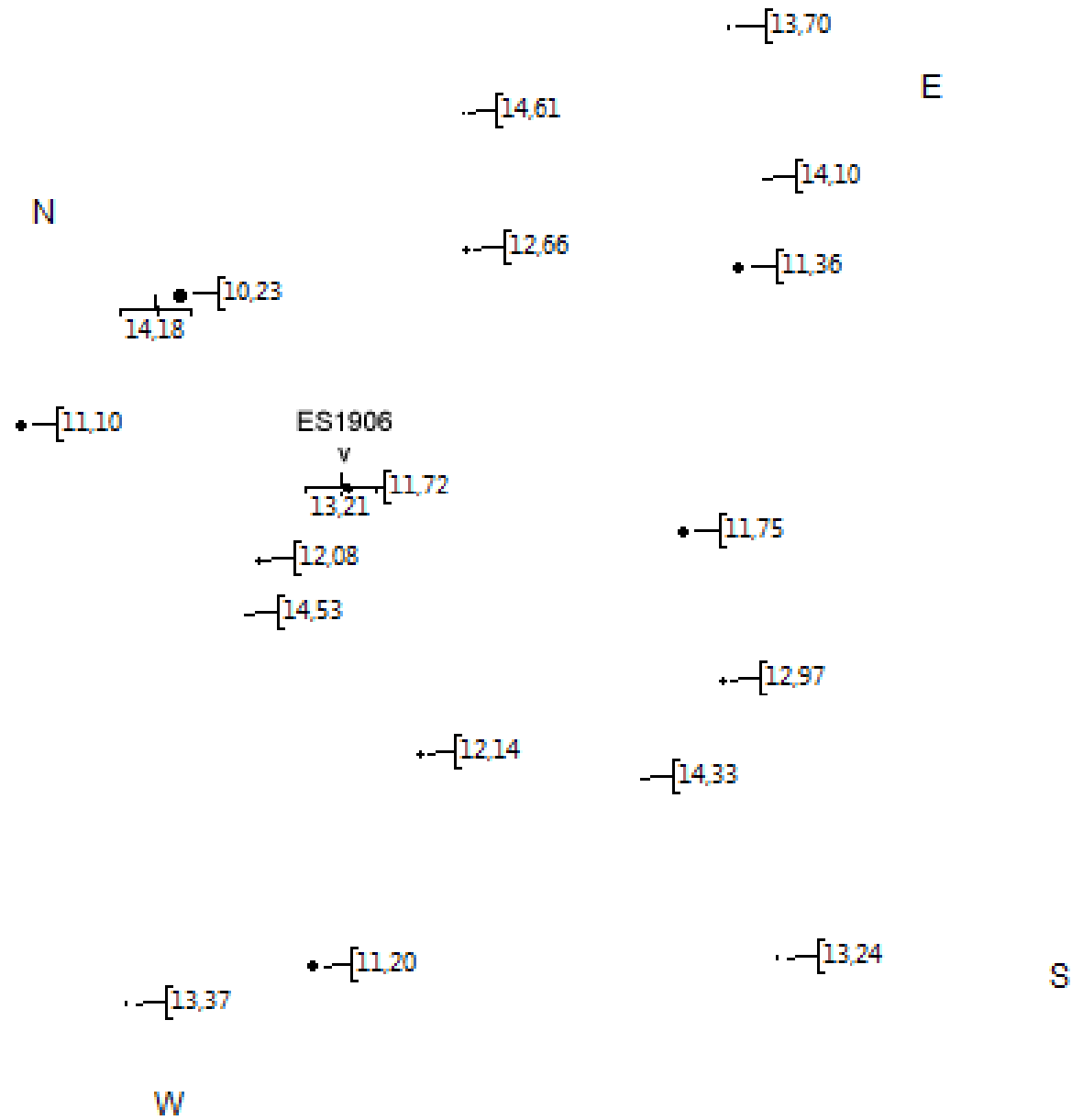
# Grosser Baer



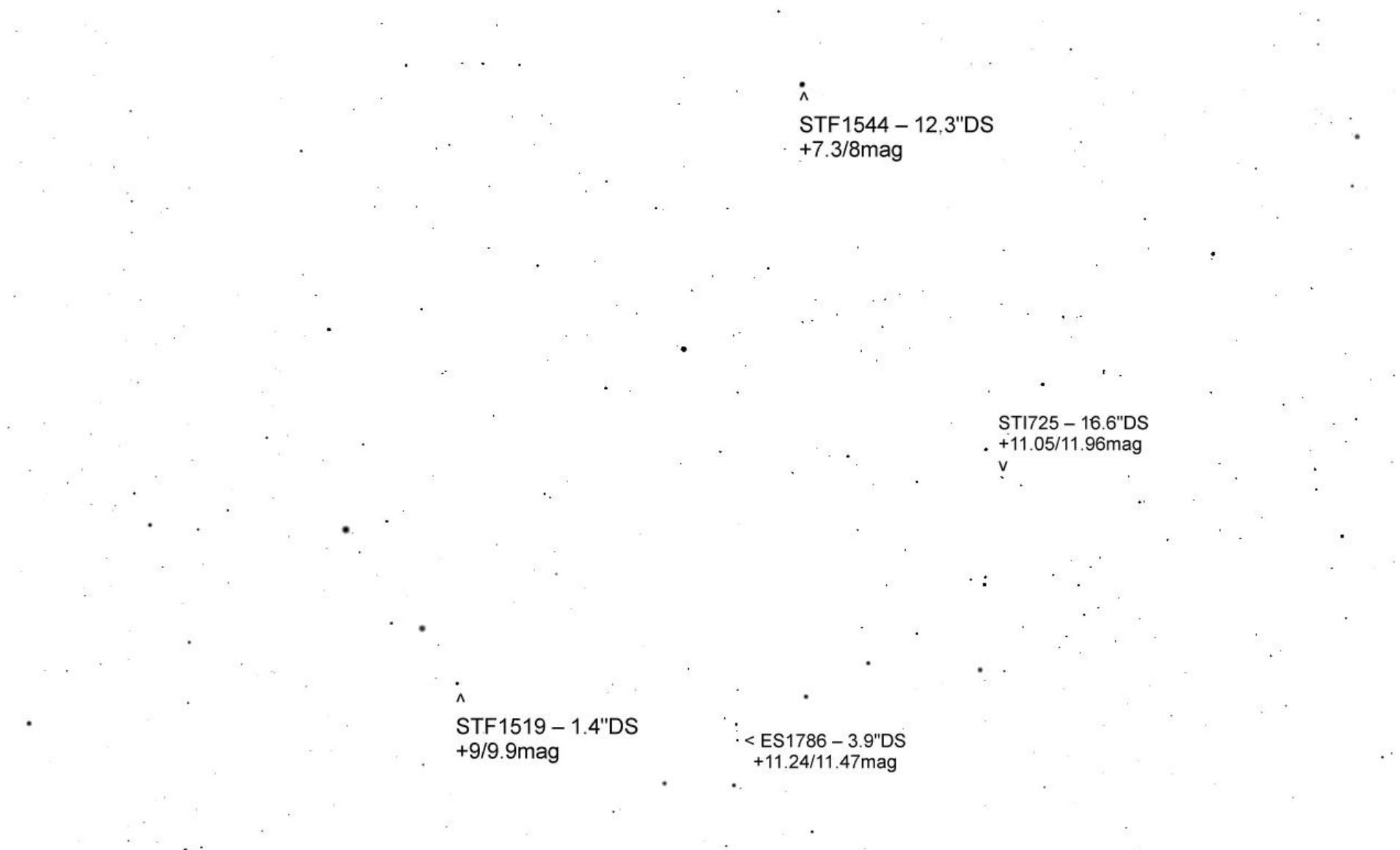


TML Alpha UMa 20' Mitte Juli





15' Umfeld ES1906



^  
STF1544 – 12,3"DS  
+7.3/8mag

STI725 – 16.6"DS  
+11.05/11.96mag  
v

^  
STF1519 – 1.4"DS  
+9/9.9mag

<  
ES1786 – 3.9"DS  
+11.24/11.47mag

TDS8008 – 2.3"DS  
+11.8/11.86mag

PTT22 – 5.1"DS  
+11.4/11.65mag

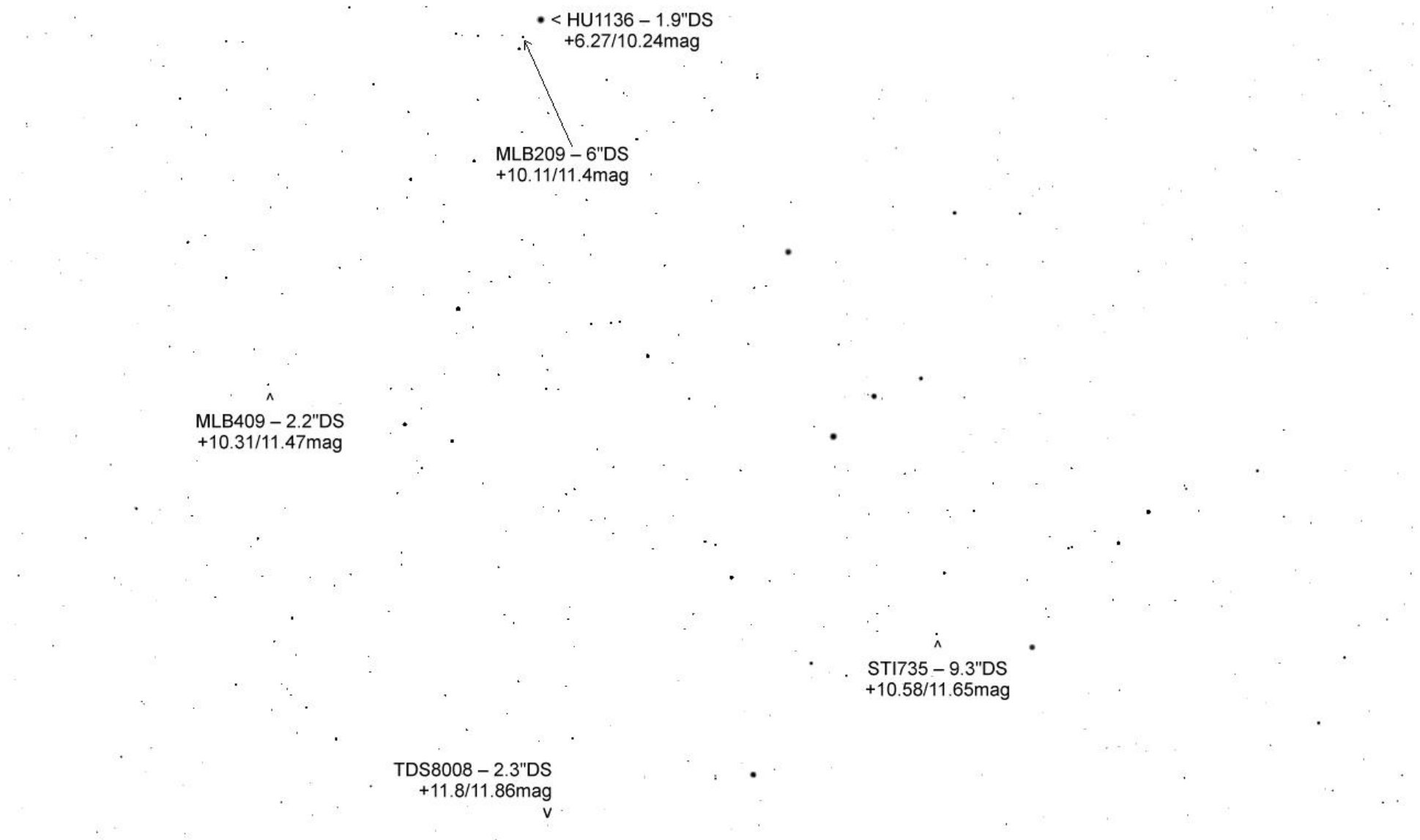
v

MLB208 – 1.7"DS  
+10.52/11.3mag

v

STT235 – 0.8"DS  
+5.69/7.55mag

STF1544 – 12.3"DS > •  
+7.33/8.02mag





WFC120 – 6.7"DS  
+10.3/11.16mag

STI739 – 9.9"DS  
+10.56/10.82mag  
v

HU1136 – 1.9"DS  
+6.27/10.24mag  
v

MLB209 – 6"DS  
+10.11/11.4mag